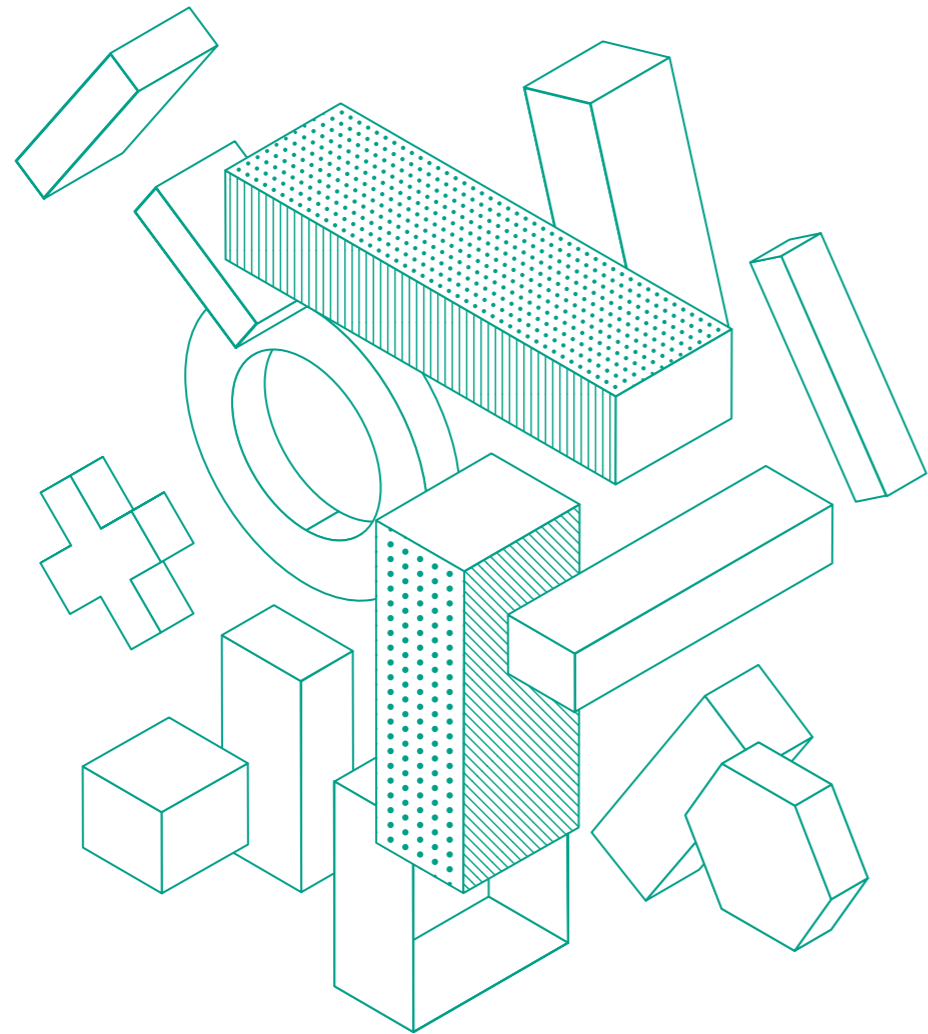




# The Projects



# Light / is the element we work and play with every day /



"Light is the element we work and play with every day. The play dimension is necessary to stimulate creativity, an essential ingredient in all our processes and which helps us to aspire to the best possible results.

There is no future without curiosity, there is no growth without paying attention to a changing world. It is exciting to see people who stay with the company for many years and still enjoy doing their jobs. Despite the 90-year history we have an enthusiastic and curious attitude of those who increasingly want to experiment."

**We started in 1928. Since then we here at Targetti have never stopped designing and creating indoor and outdoor architectural light fixtures. For almost a century our products, which are synonymous with innovation, research and attention to detail have been lighting the most prestigious architectural and**

**artistic works, creating extraordinary atmospheres and evoking real emotions. Our appearance and identity today are the result of the experience and professionalism we have gained over time, which we want to share with our partners and the quality of the environment we live in through our passion for light**

# Our essential vocabulary / with the words we cannot do without /

Design  
Dialogue  
Innovation  
Intuition  
Light  
Team  
Worldwide

D

## Design

Every single one of our products has always epitomised the essence of who we are: essential and discrete shapes and excellent performance in recognizable designs that are within everyone's reach.

Beauty, functionality and simplicity.

## Dialogue

Listening, welcoming stimulus, sharing knowledge and experience. Dialogue is a mind that is open to outside influences, continual exchanges of ideas with partners, multidisciplinary attention and a heart that is always ready to take on new challenges.

I

## Innovation

Three infinite concepts we are very fond of: progressing, evolving and changing. In a word innovation. The courage to lead the way with the passion and the amazed and curious perspective of someone who knows they still have a long way to go.

## Intuition

Intuition as our main purpose, as an awareness that makes it possible to glimpse a direction for the future, as a spark of genius that continues to make us pioneers in designing new models.

L

## Light

Is our raw material, an essential tool and the result of our work. It is an intangible and magical element that designs shapes and animates spaces. To us its language is technical refinement, scientific precision as well as sentiments, atmospheres and the possibility to adorn every place with emotions.

T

## Team

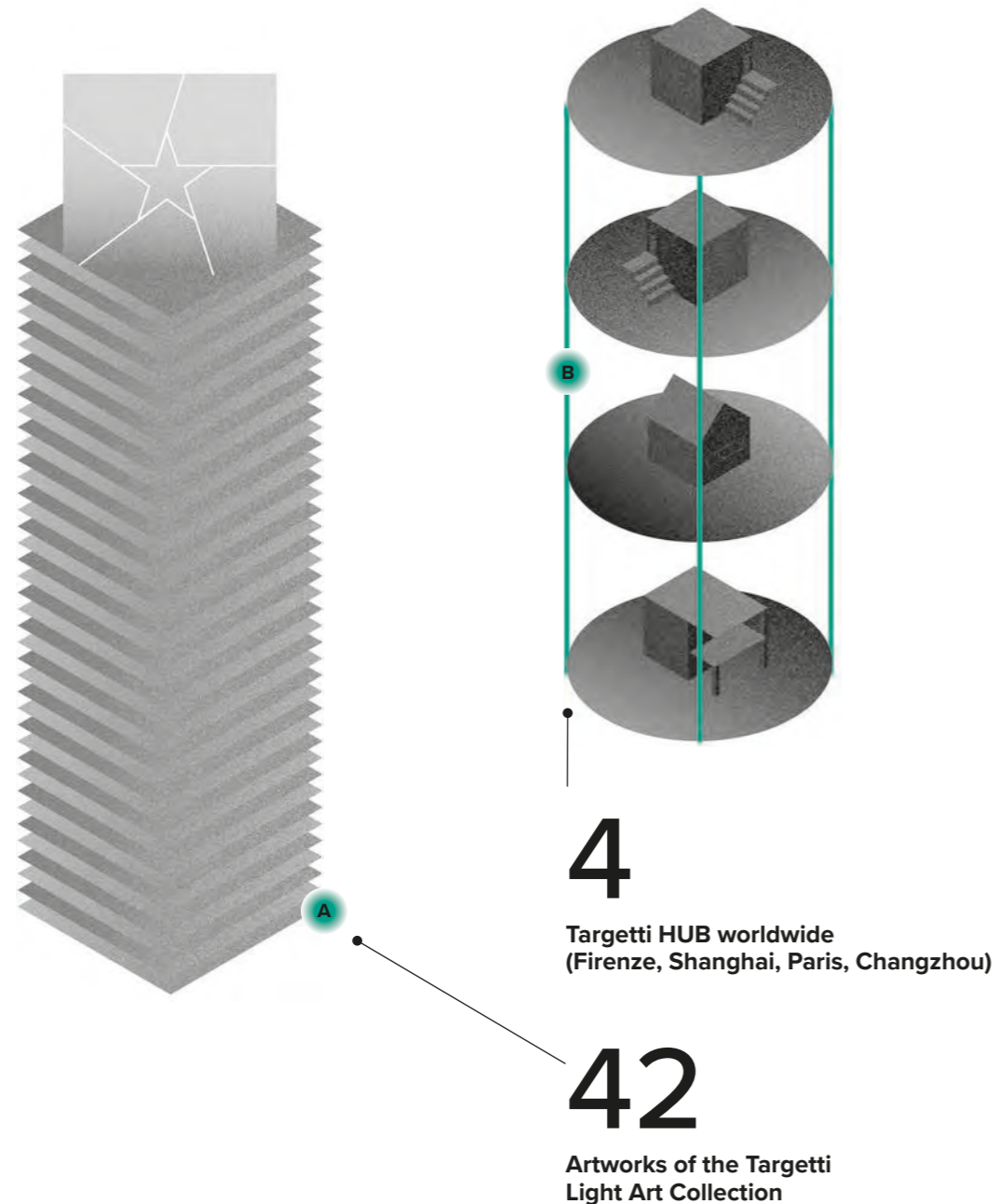
Different countries, different teams, only one goal. Targetti people play the same game, share the same culture, speak the same language, the language of light.

W

## Worldwide

Global presence and local networks: our partners can reach us easily. The solutions we provide are versatile and can meet the needs of designers from all corners of the world.

# / Open to influences /



We were founded for light.  
We know how to shape it, expand its boundaries and horizons, express it in unusual ways and make it interact with other elements and materials.

## A Targetti Light Art Collection

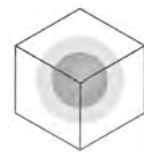
The Targetti Light Art Collection was created with this idea in mind, to use light as a means of expression; light interpreted by the sensitivity of the artists.

Targetti Light Art Collection is a collection of contemporary works of art, more than 40 “light pictures”, commissioned from young artists who are now among the most important on the international scene.

## B Targetti Hub

Places for dialogue and sharing there are four Targetti HUBs around the world: TH01 at the Headquarters in Florence, TH02 in Shanghai, TH03 in Paris and TH04 in Changzhou. They express our ideas and values. They are the expression of our desire to meet our partners, lighting designers, architects and interior designers in a place that really represents us. One word is not sufficient to describe them: they are laboratories, showrooms, meeting and event locations and dynamic and evolving environments that are open to dialogue and discussion with our partners and customers.

# / The answer to every question /



## Indoor lighting

A complete range of products for indoor lighting, constantly updated to provide architects, designers and lighting designers ideal solutions and tools that are capable of enhancing every architectural context. Light for retail environments, places of worship, museums, workplaces and the hospitality industry.



## Outdoor lighting

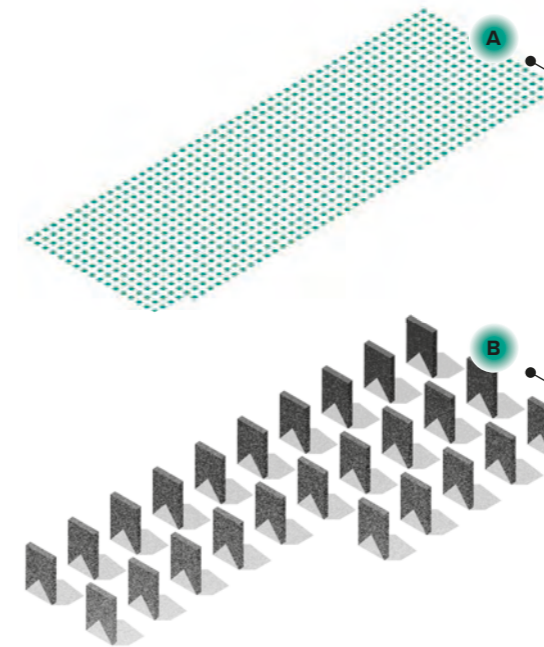
The variety of solutions on offer makes Targetti the ideal partner for every urban lighting project: from the redevelopment of large public spaces to highlighting monuments, historical buildings and places of worship as well as modern office complexes. The architecture is always centre stage.



## Custom made lighting

Creating an ad hoc light fixture for a specific project is a challenge, a fundamental stimulus that feeds our creative energies. Despite the wide and extensive variety of products on offer it is not always simple to find a product that meets the many variables involved in a complex project.

We work alongside our partners, we share the journey in all project phases, we design custom made products and we help them to produce them. Our technical department studies solutions that adapt to space, design, colours and dimensions. Solutions that can be an integral part of an environment and meet ever-changing lighting needs.

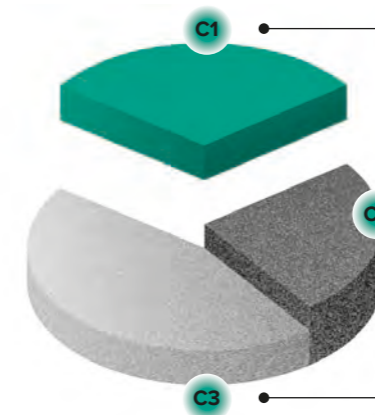


**8960**

Product order codes in the Targetti Catalog (International)

**25**

Patents



**30%**

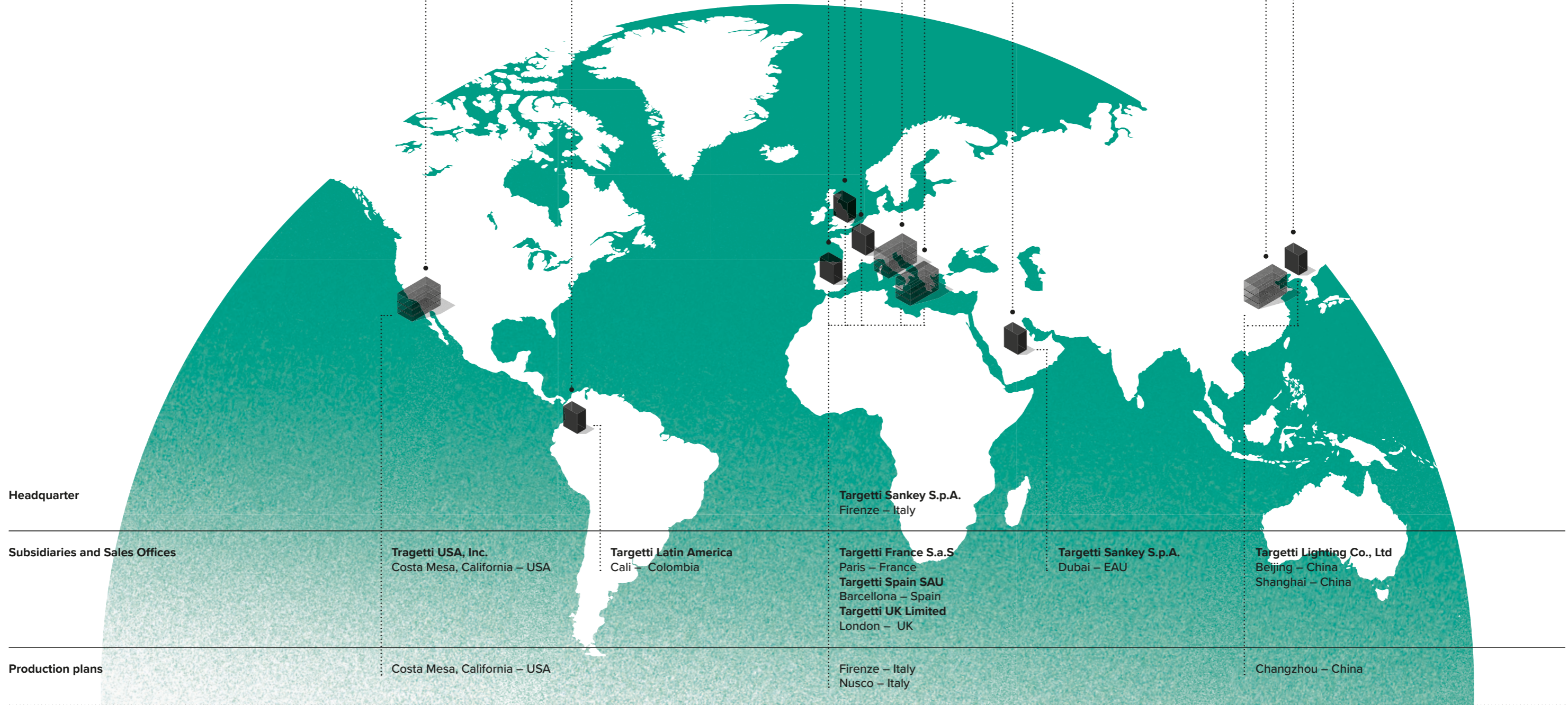
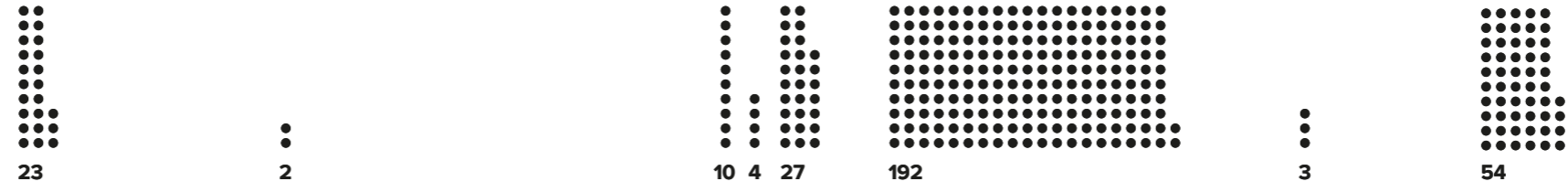
Custom Sales

**25%**

Outdoor Sales

**45%**

Indoor Sales



# Targetti light around the world

## Working Spaces

UNICEF Office of Research-Innocenti • Florence, Banca Popolare di Milano • Florence, Istituto Europeo del Design • Florence, Pontificia Università • Rome, Università LUMSA • Rome, Camera dei Deputati administrative offices • Rome, Fiera di Bologna, RAMDIFE offices • Rome, Daiichi Sankyo • Rome, Avon Offices • Milan, Daikin Offices • Milan, Maranello library • Maranello, Tetrapak Carton Ambient • Modena, Bottonificio Lenzi • Bologna, Centrale Operativa Protezione Civile • Turin, Prisma Executive • Mantova, Ristorante aziendale Koà • Milan, Castello di Susa • Susa, Université Catholique • Lyon, Caisse des Écoles • Paris, Liceo Vallée de Chevreuse • Gif-sur-Yvette, Deloitte Office • London, McLaren Production Centre • Woking, Grant Thornton • Milton Keynes, Zeisehof • Hamburg, Cotbus University Library • Cottbus, V2L2 Milestone • Wien, University of Southern Denmark (SDU) • Odense, Oficinas Cantar • San Cugat, Barcelona, Oficinas Hamilton • Las Palmas, Canarias, Oficinas Banco de España • Madrid, Colegio Mestral • Ibiza, Princess Noura University • Riyadh, CMU College • Doha, Student Center • Doha, Qatar Foundation • Doha, King Abdullah Financial district • Riyadh, Chaoyang Park Plaza • Beijing, Booth Theatre at Boston University • Boston, Sage Hill High School • Newport Beach, McDonald’s Flagship HQ • Chicago, McConnell Plaza • Playa Vista, 777 Aviation • El Segundo, Jaqua Stairs Tivoli • Eugene, Corporation Universidad Iberoamericana • Ciudad de Mexico, Colegio Franklin Delano Roosevelt • Lima, Transoceànica • Santiago de Chile, CPT Headquarters, Zonamerica • Montevideo, Edificio Matta • Santiago de Chile, Oficinas Braun • Santiago de Chile, Oficinas COPEC • Santiago de Chile, Oficinas Grupo Romero • Lima, Oficinas PVH • Ciudad de Mexico, CIAT • Cali

## Hospitality and Entertainment

Teatro dell’Opera • Florence, Cinecittà World • Rome, Cinema Astra • Sassari, Starhotels • Genoa, Starhotels • Torino, Starhotels • Parma, Golf Hotel Is Arenas • Oristano, Hotel Ergife • Rome, St. George Hotel • Rome, Lido Palace Hotel • Riva del Garda, Hotel X Children • Rimini, Mercato Centrale • Florence, Red Point Caffè • Milan, Ristorante Oltremodo • Genoa, The House of Music • Aalborg, Royal Danish Theatre • Copenhagen Hotel Le Meridien Lav • Split, Restaurant Vapiano • Paris, Applebar • Moscow, D.O.C. Restaurant • Hamburg, St. Regis Hotel • Abu Dhabi, Oceania Hotel Palm City • Dubai, Marriott Hotel • Dubai, Bellagio Hotel • Shanghai, Wynn Palace Cotai • Macau, Opera House • Singapore, Caravelle Hotel • Ho Chi Minh City, Bar Ugly • Fukuoka, Copley Symphony Hall • San Diego, Marriott Marquis Hotel• Atlanta, Cannery Hotel and Casino • Las Vegas, Lucky Dragon Casino • Las Vegas, Lido House Hotel • Newport Beach, Baha Mar Resort • Nassau, Teatro Uniatlantico •

Barranquilla, Hotel Atton • Lima, Hotel Mandarin • Santiago de Chile, Hotel Sheraton • Bogotá, Hotel Galerias • Santiago de Chile, Lobby Hotel La Victoria • Iquitos, Hotel Chillan • Chillan, Torre Mayor • Ciudad de Mexico, ICI Brasserie Bela Cintra • Sao Paulo.

## Residential

The Groove • Arezzo, Private Villa • Forte dei Marmi, Home for life • Lystrup, Ziad Al-Manasser Palace • Amman, Private Residence • Huntington Beach, Private Residence • Del Mar, Private Residence • Newport Beach, Private Apartment Schaller • Bogotá, Casa Lomas Country • Ciudad de Mexico, Casa Juan Galeano • Bogotá, Casa 350 • Bogotá, Casa Domenack • Lima, Casa Arsuaga • Ciudad de Mexico

## Shopping Malls

McArthurGlen Outlet• Salzburg, Centro commerciale “Happio” • Rome, Fashion District Outlet • Valmontone, Rome, Westgate Shopping Centre • Oxford, Ànec Blau CC • Barcelona, Centro Comercial Nevada • Granada, CC Isla Azul • Madrid, CC FAN • Palma de Mallorca, Iso Omena shopping mall • Helsinki, T1 shopping mall • Tallin, City Centre • Bahrain, 360° Mall • Kuwait City, Cinescape Al Kout, National Cinema Company • Kuwait, Nicollet Mall • Minneapolis, The Gathering Place • Tulsa, Santa Clara Square • Santa Clara, Fashion Island • Newport Beach, Irvine Spectrum • Newport Beach, Los Olivos Retail Center • Irvine, Torre Costanera Center • Santiago de Chile, Parque Arauco • Santiago de Chile, Transoceanica • Santiago de Chile, Mall Plaza Los Dominicos • Santiago de Chile, Mall Quillota • Cencosud. Real Plaza • Puruchuco.

## Sport, Health and Wellness

Liverpool FC Anfield Stadium • Liverpool, Athletic Bilbao Stadium • Bilbao, Sala de Prensa Ciutat Esportiva F.C.Barcelona • Barcelona, Inwhite Medical • Moscow, International Hair Clinic • Moscow, Amalienbad • Wien, Los Angeles Football Club Banc of California Stadium • Los Angeles, LA Fitness Gym • USA, Salam Emergency Center • Khartoum, National Stadium • Singapore, Clinica Alemana • Santiago de Chile

## Transport

Pentagon Universal Aviation • Rome, Aeroporto di Catania, Paris Orly Airport • Terminal 2, Aeroport de Barcelona, Zurich Airport • Dock B, Doha International Airport, Bahrain International Airport, Muscat International Airport, VIP Terminal Kuwait Airport, Jabil Ali Duty Free Zone Authority Offices • Dubai, Miami International Airport

## Retail

Almacenes Paris, Amazon, Bally, Bankinter, Bestseller, Bexley, Bonpreu, Carlo Pazolini, Calliope, Carrefour, Cedeo, Charles Tyrwhitt, Citroën, Coop, Credit du Nord, Dermalogica, DS Automobiles, Falabella, FCA Group, Ferrari, Hyundai, L’Oreal, La Cuisine Peru, Lugano Diamonds, Maisons du Monde, McLaren, Mercedes-Benz, Mitsubishi, Moorer, Nike, Nissan, NYX, Peugeot, Porsche, Prenatal, Reiss, Renault, Rinascimento, Robinson Quay, Rodd & Gunn, Sanford, Sartoretto Verna, Seat, Skoda, Societe Generale, Starbucks Coffee, Strabag, Suzuki, Talco, Terranova, Todis, Vauxhall, Venchi, Volkswagen, Volvo, Walt Disney.

## Museum and Exhibition

Uffizi Gallery • Florence, Tribuna degli Uffizi • Florence, Cappella di Eleonora, Palazzo Vecchio • Florence, Pucci Archives • Florence, Museo Stibbert, the Japanese Rooms • Florence, Fondazione Franco Zeffirelli • Florence, Museo delle Sinopie • Pisa, “Angels&quot; by Igor Mitoraj • Pisa, MEF Museo Ettore Fico • Turin, Fondazione Magnani Rocca • Parma, Museo del Vittoriano • Rome, Museo Napoleonico • Rome, Musei Capitolini • Rome, Casa del Cinema • Rome, Casina delle Rose in Villa Borghese • Rome, Museo Carlo Bilotti in Villa Borghese • Rome, Centrale Montemartini • Rome, Museo di Scultura Giovanni Barracco • Rome, Museo di Roma in Trastevere • Rome, Lorenzo Lotto Exhibition, Scuderie del Quirinale • Rome, Castello Odescalchi, Sala delle Armi • Bracciano, Museo Aperto Antonio Asturi • Vico Equense, Centro Espositivo Rocca Paolina “CERP” • Perugia, Museo Archeologico Nazionale • Reggio Calabria, Louis Vuitton Foundation • Paris, V&A Victoria & Albert Museum • Dundee, New National Museum • Oslo, The LEGO House • Billund,Museo del Ejercito • Toledo, El Greco de Toledo • Toledo, Museo Art-deco • Salamanca, Muza Museum • Malta Autoville Private Collections Museum • Moscow, Confucius Museum • Beijing, Museo de la Tertulia • Cali, Palacio Pereira Santiago de Chile

## Outdoor

Pensiline Stazioni FS • Florence, Piazza Castello • Turin, Piazza del Duomo • Prato, Piazza Libertà • Certaldo Mura Vaticane, Passetto di Borgo • Rome, Riviera delle Palme • San Benedetto del Tronto, Le château de Chenonceau • Chenonceau, Place Massèna • Nice, Hotel Le Claridge Paris Champs Elysées • Paris, Barking Town Square • London, Lillie Square • London, Serpentine Cafe Hyde Park • London, Cambridge Biomedical Campus • Cambridge, Arma Business Quarter • Moscow, Magazin du Nord • Copenhagen, St. Elmo Bridge • La Valletta, Landestheater • Salzburg , Grand Plaza • Anaheim, Ritz Carlton Hotel • Muskat, Disney flagship store • Shanghai, Han CulturI EXPO • Hanzhong, Taiziwan Business Headquarters Building • Shenzhen, SF Headquarters Building • Shenzhen Shenzhen Shekou Cruise Center • Shenzhen, Plaza Gabriela Mistral • Santiago de Chile, Torre Atrio 1 and 2 • Bogotá, Centro Historico • Cali, Parque Eleam, Santiago de Chile, Westfield Tea Tree Plaza • Melbourne

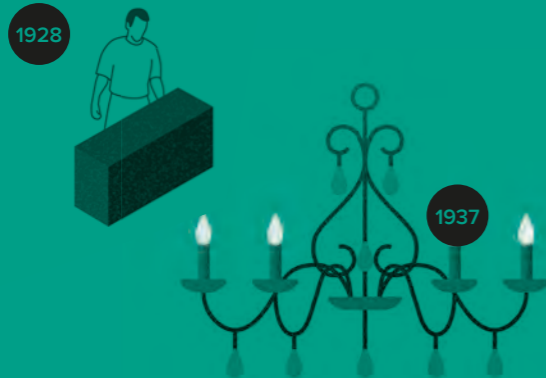
## Sacred and Historical Building

Salone dei Cinquecento • Florence, Duomo of Santa Maria Assunta • Pisa, The Leaning Tower • Pisa, Campo dei Miracoli • Pisa, Duomo of San Giorgio • Ferrara, Duomo of Bertinoro, Church of San Lorenzo • Vicenza, St Siro Cathedral • Genoa, Palazzo dell’Apollinare • Rome, Chiesa di San Francesco a Ripa • Rome, Chiesa San Pietro in Montorio • Rome, PNAC Pontificio Collegio Americano del Nord • Rome, Cathedral of San Giustino • Chieti, Reggia di Colorno • Parma, Forte dei Borgia • Nepi, Cantine Gancia • Asti, Notre-Dame de Paris • Paris, Toulouse Bazacle • Tolosa, Gros-Horloge • Rouen, Parlament de Catalunya • Barcelona, Casa Lis Salamanca, Catedral de la Almudena • Madrid, Catedral de Toledo, Catedral de Cuenca.Vienna State Opera • Wien, Stadtpalais Liechtenstein • Wien, Basilica of the Sacred Heart • Grenoble, Montseveroux Castle • Montseveroux, St Peter and St Paul Cathedral • Djakovo, Zvestovani Panny Marie Church • Praha, St Florian Chapel • Praha, Christ Cathedral • Garden Grove, Iglesia de S.Ignacio • Valparaiso, Templo Baha’i • Cali, Catedral de Valledupar



# / 90+ years of ideas /

1928



**1928** Sankey Targetti started out with a small shop selling lamps and electrical items.

**1937** Targetti started producing light fixtures (chandeliers, appliques and table lamps) and soon became a small industry.

**1959** Inauguration of the industrial complex on the outskirts of Florence, still the Targetti Headquarters today.

**1972 BITRACK:** the first electrified track in Europe entirely made in extruded plastic; packed together with its spotlights for "self service" installation, it introduced directional light into homes.

**1975** The family of technical fixtures **ALTALITE** is created, together with **ALTALAMP**, a division producing and selling technical and decorative lamps. **ALTALITE** "Quasar" is introduced, a range of technical lighting fixtures with traditional and halogen lamps for line or low voltage.

**1979** The creation of **STRUCTURA**, the first and most imitated totally self-supporting lighting system. A three-dimensional flexible assembly makes possible the positioning of projectors and integrated lighting modules on any of its points, regardless of the environment to be lit.

**1986 PULSAR**, the first range of specialized projectors for discharge lamps (HQI 150W) for indoor use. Production and distribution of the first dichroic filter (UV, IR, Chromatic, etc).

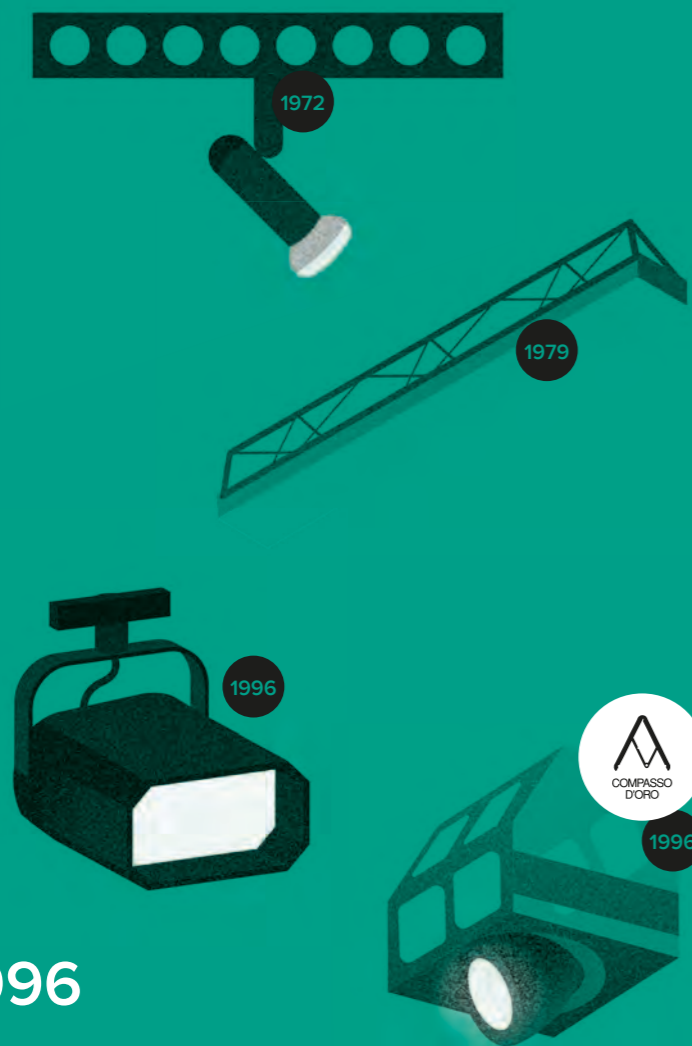
**1987** Agreement with the University of Florence to develop a photometric laboratory in Targetti, the first of its kind in Italy and amongst the first in Europe.

**1988** Targetti became the first group in Italy for the production of lamps and lighting systems with dealers all over the world.

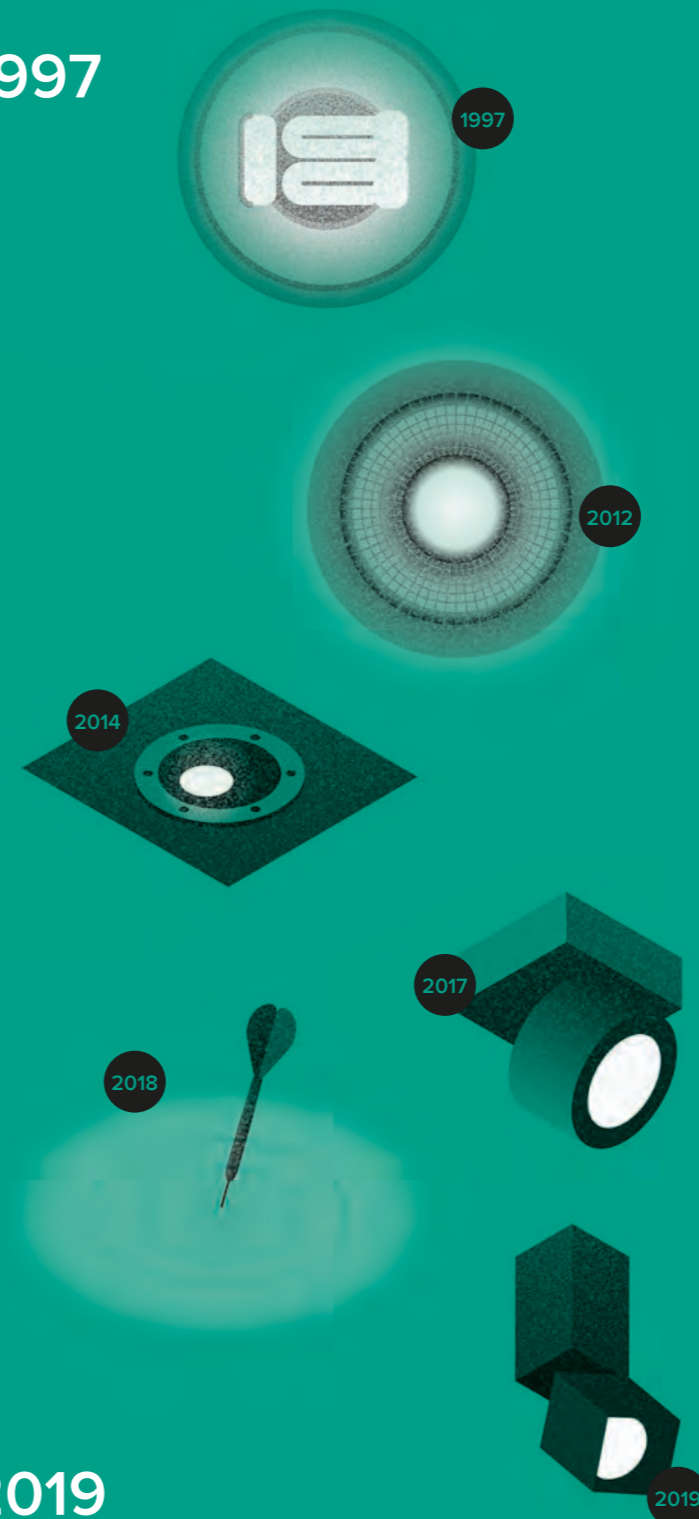
**1993** Creation of **LIGHT OF FLORENCE**, world's first product collection specifically dedicated to the illumination of historical buildings and places of worship.

**1996** Targetti wins the **Golden Compass** with its Mondial F1 projector, an innovative modular fixture in the world of lighting design.

1996



1997



**1997** Introduction of **CCT**, the first range of fixtures for compact florescent lamps with optics designed with proprietary software in the laboratory of the University of Florence at Targetti.

**2000** Development of the first **LED STRIP** lights for the US market. Introduction of the **CCT FLASH** family, first of its kind in Europe, specifically developed for new compact fluorescent lamps that introduced an innovative "scratch proof" protection system on Targetti optics.

**2004 LIGHT NAVIGATOR**, the first fluorescent RGB wireless control system capable of driving multiple fixtures via radio waves (designed in collaboration with the University of Florence).

**2006** Introduction of **LUCE VIVA**, first collection specialized in LED products for indoor and outdoor architectural lighting with RGB and CTC technology controlled by DMX signals.

**2010** Creation of the first modulated light LED lighting products.

**2012 CCT LED Downlight**, Innovative range of recessed LED lighting fixtures with highly efficiency and modular, patented LED optics.

**2014** Following a long tradition in optic innovation, **KEPLERO ZOOM** is invented: unique LED ingrade with patented adjustable optic system.

**2016** Introduction of the patented **HYBRID** optics, high precision and efficient optic to equip most sophisticated products of the range.

**2017** The **3F Filippi — Targetti**, group was created, an Italian group that is present all over the world.

**2018** The launch of the **Dynamic Beam Shaper**, the innovative optical system based on the use of liquid crystal lenses to control light beams.

**2018** Targetti celebrated their 90th anniversary

**2019** Introduction of **OZ**, the innovative magnetic system for compact light modules.

2019

# Working Spaces

[Common Areas](#)

[Education](#)

[Office](#)

[Lobby](#)

## PRODUCTS

### 17 McLaren Production Centre

Custom products

### 20 Université Catholique Lyon

KEPLERO Zoom, PYROS

### 24 Università LUMSA

JEDI Projector, JEDI Recessed, KEPLERO ZOOM, BeBop Recessed, CCT LED Architectural, CCT LED Architectural Adjustable

### 28 Fiera di Bologna

LOGICO, RAY, DART Medium

### 30 Zeisehof

Hall, LEDÒ, CLOUD Mini, CCT LED Architectural Mini, CCT LED Architectural Mini Adjustable, DART Medium

### 34 BCG — Boston Consulting Group

CCTLED Downlight Mini Adjustable, DURASTRIP

### 36 Zonamerica

LOGICO, POLKA, CCTLED Architectural Micro, Pantheon

### 38 Chaoyang Park Plaza

DURASTRIP, CLOUD, LEDÒ, CCT LED Downlight, CCT LED Architectural, CCT LED Architectural Mini Adjustable

### 40 Project 107

LOGICO, ZENO Medium, OTTO, THREESIXTY, LEDÒ, Pantheon, DURASTRIP

### 44 Daiichi Sankyo

LOGICO, CCT LED Tube Smart, THREESIXTY, RAY Micro

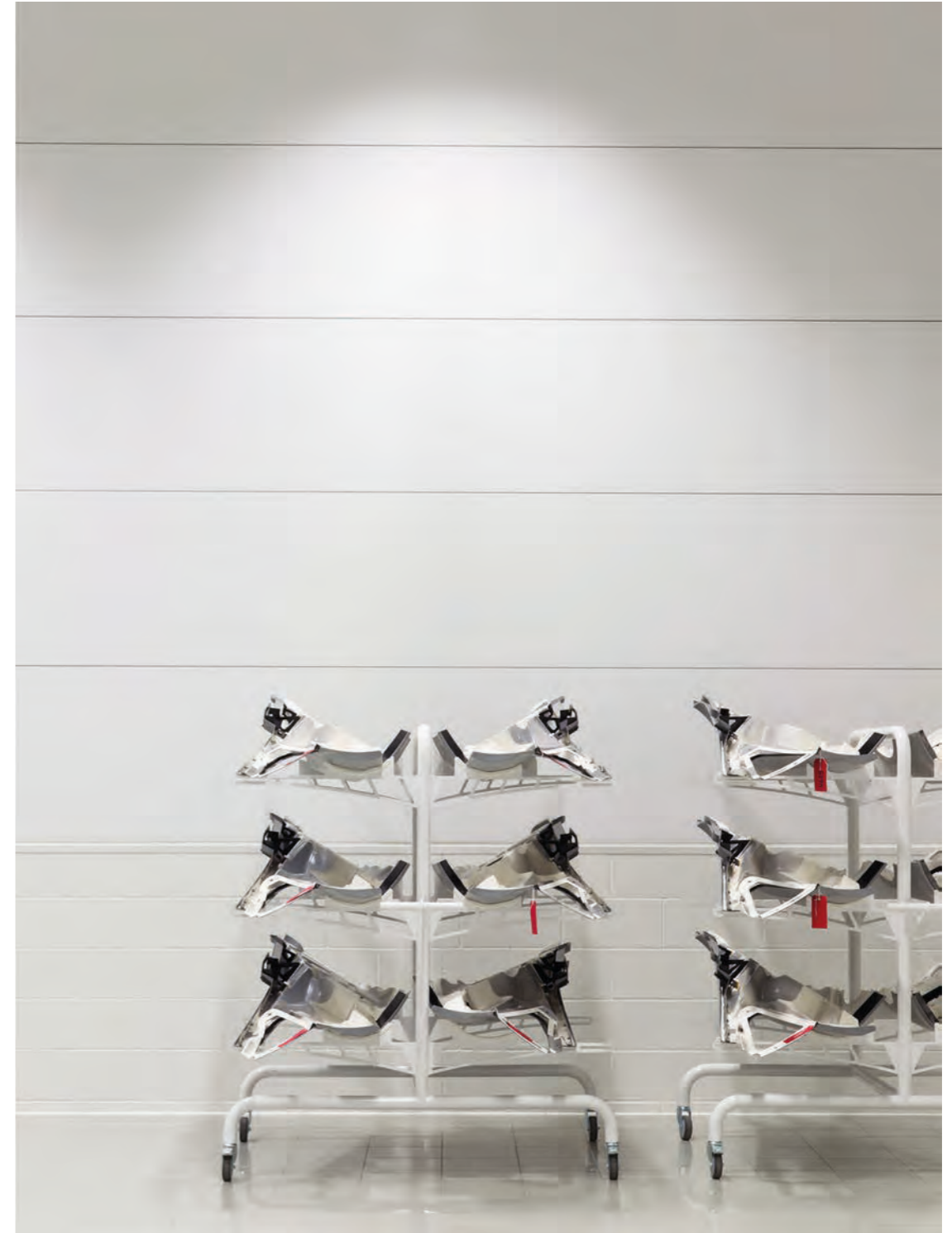
### 46 Palazzo Pepoli

LEDÒ

### 48 Showroom Zappieri

LEDÒ









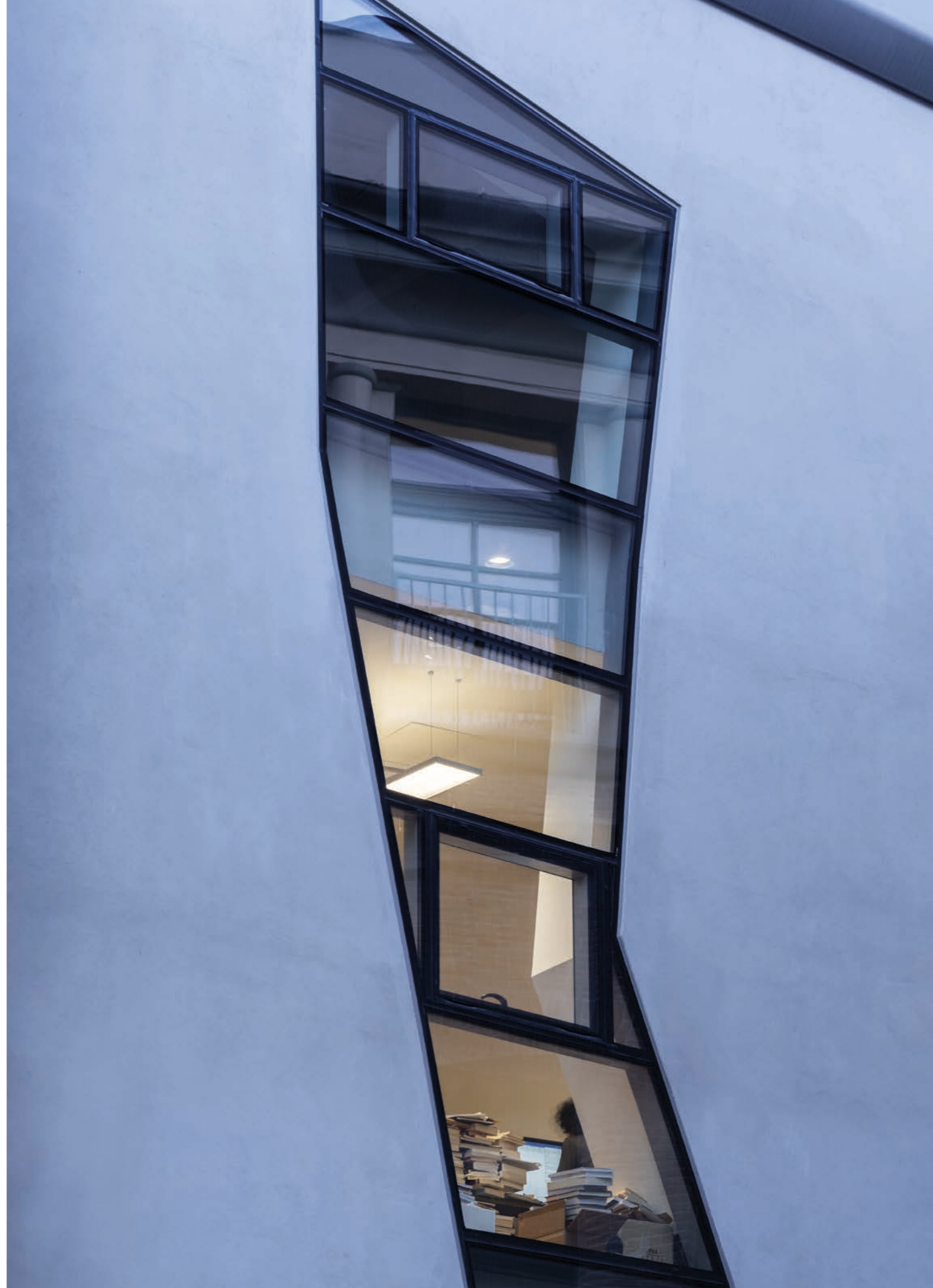
Architect Garbit & Blondeau  
Photographer Jerome Ricolleau





Engineer Maurizio Russo, Mario Di Paola  
Electrical Engineer SIEC Srl

Architect Giuseppe Manara & Partners  
Photographer Ivan Rossi







Photographer Ivan Rossi

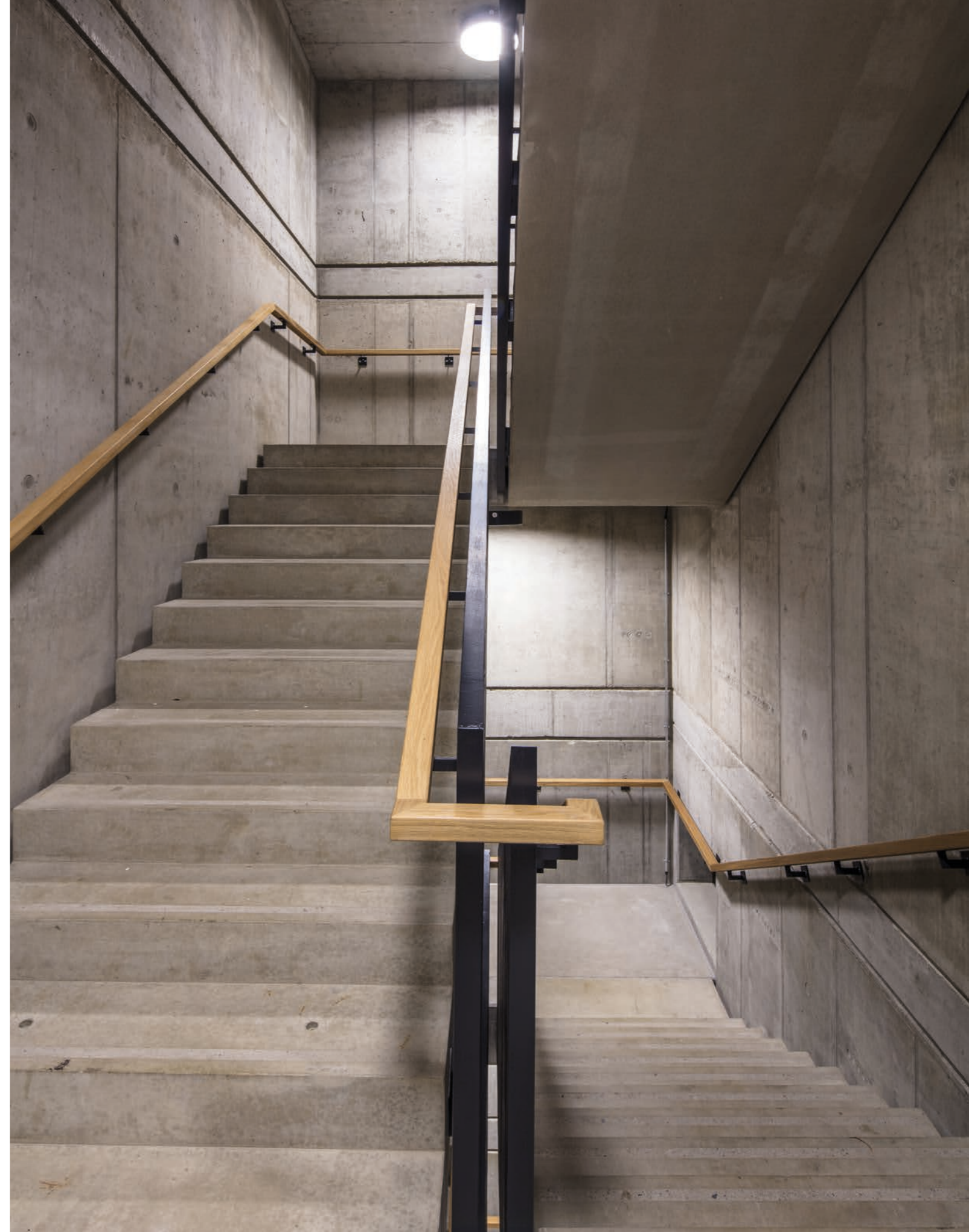
Construction Management Ing. Begani, Ing. Breveglieri  
Facility Manager Gian Paolo Gardellini





Lighting Design Peter Andres

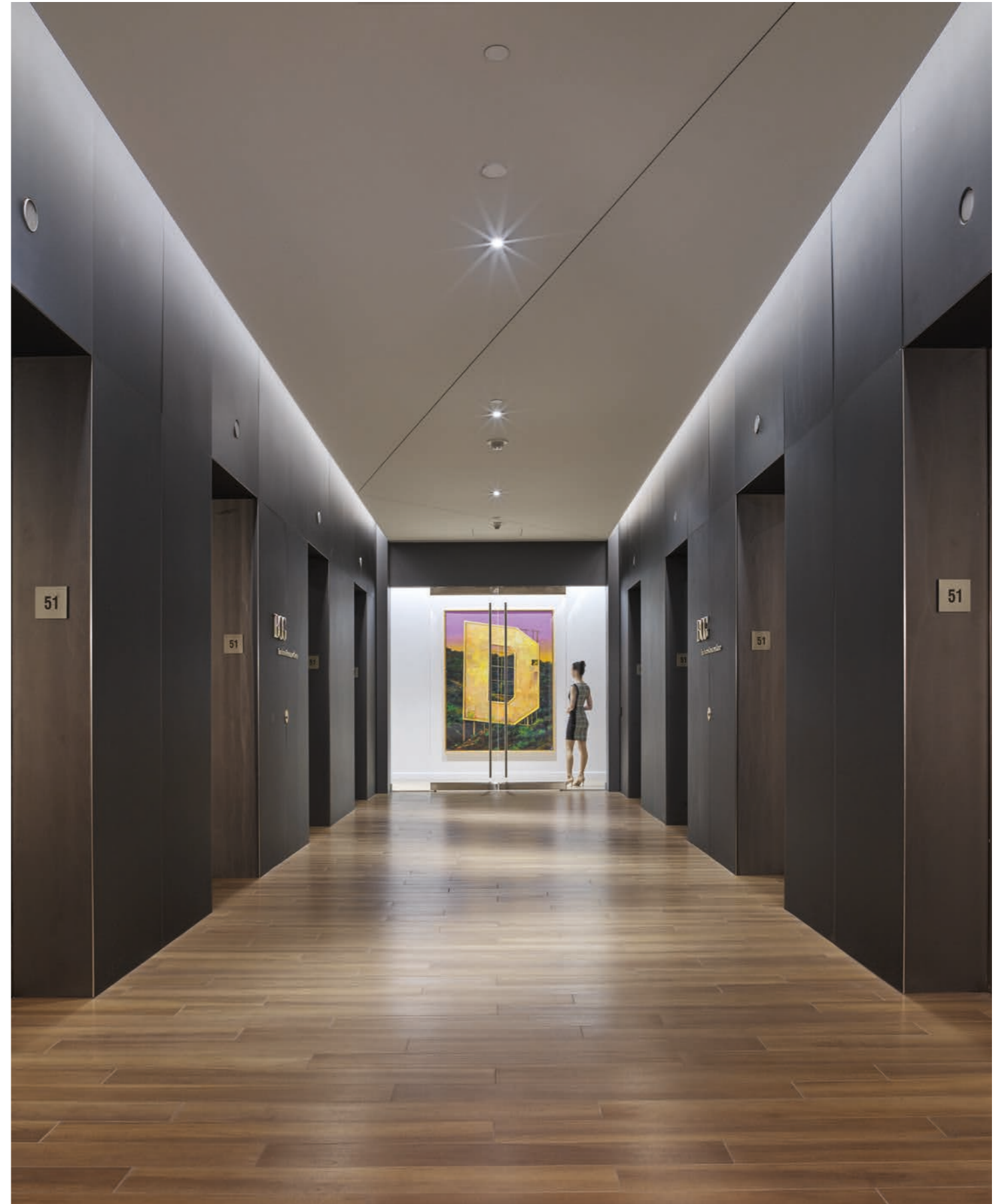
Architect Störmer Murphy & Partners  
Photographer Carsten Brüggmann



Awards 2017 Lumen West — Award of Excellence — Interior Design

Lighting Design Oculus Light Studio  
Designer Carol Prendergast

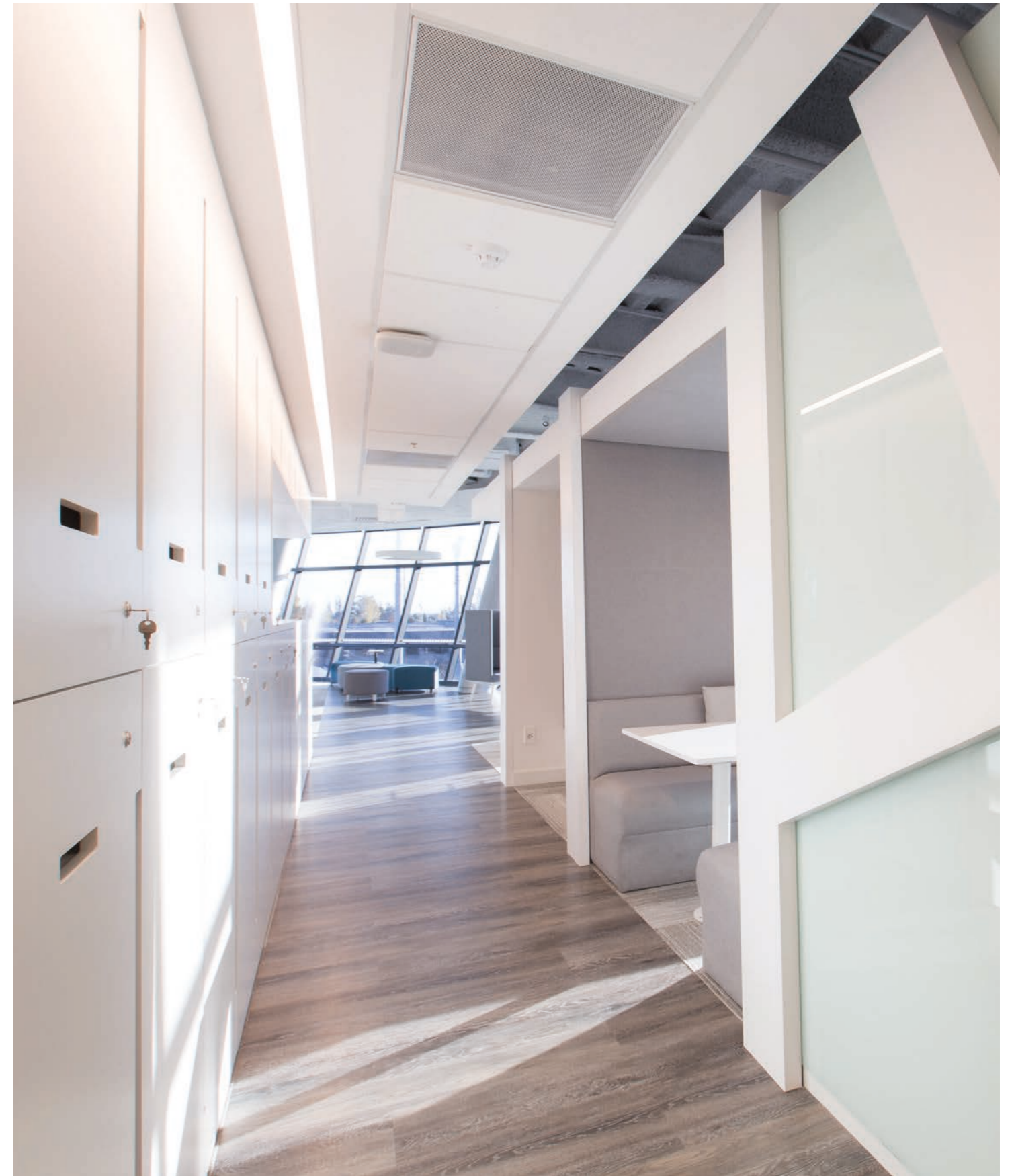
Architect Shubin & Donaldson  
Photos © Benny Chan/Fotoworks





Lighting Design Estudio Hofstadter

Architect Estudio Dovat Arquitectos  
Photographer Ferrés - Cánepa





Architectural Designer Ma Yansong, MAD Architects



Architect The Ply Architecture

Photographer Andrey Egorov  
Client Outstaff-cement







Architect Studio Unispace, Salvatore Marinaro  
Photographer Romy Leon Lorenzo



Architect Elisa Manelli  
Photographer Ivan Rossi



Architect Pino Bruggellis  
Photographer Ivan Rossi

# Hospitality and Living

[Entertainment](#)












[Transport](#)

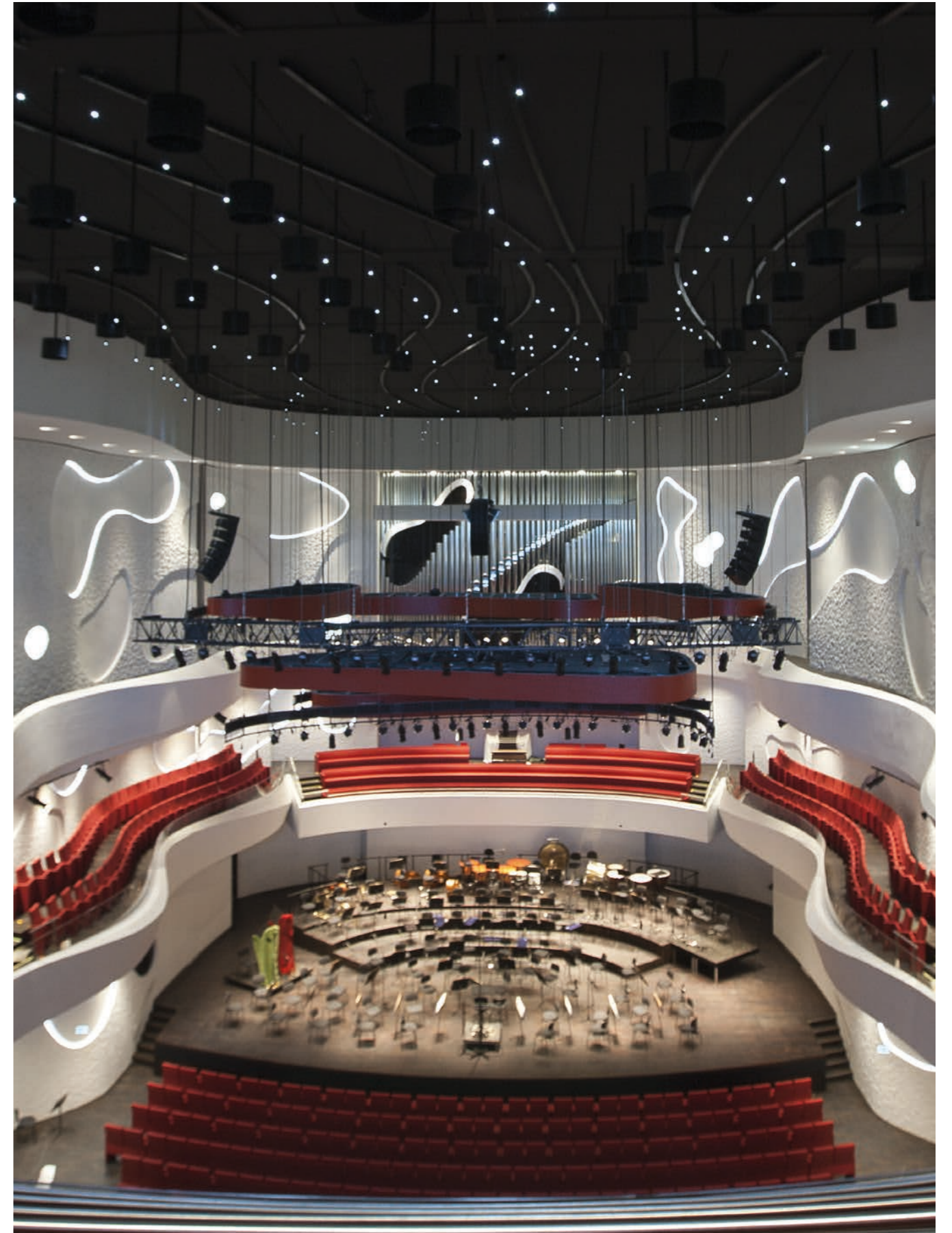
[Residential](#)

[Hotel](#)

[Restaurant](#)

## PRODUCTS

49	<b>Music House</b> LED.Y Monoled	
52	<b>Cinecittà World</b> KEPLERO Zoom, PYROS, NANO PYROS, PICO PYROS, LED.Y Projector	
56	<b>Teatro dell'Opera</b> Customs products	
58	<b>Samsung KX London</b> ZENO Medium	
60	<b>Banc of California Stadium</b> PYROS, DURASTRIP, DART Small	
62	<b>Boston Logan Airport, Terminal B</b> CCTLED Downlight, DuraNeonFlex	
66	<b>Private Residence - Penthouse</b> CCTLED Downlight, HALL, OTTO Recessed, STILO Wall Flat, ZEDGE Line	
70	<b>Private residence</b> MINIMERCURE, DART Small, DURASTRIP	
72	<b>ICI Brasserie Bela Cintra</b> CCTLED Architectural, CCTLED Architectural Adjustable	
74	<b>Oursin Restaurant</b> Fortyeight Label 6	
76	<b>Park Hyatt</b> BeBop, CCTLED Architectural Adjustable, LEDÓ	
78	<b>Wynn Palace Resort Hotel</b> DURASTRIP	
80	<b>Alma Cruz Convention Center</b> JEDI Projector	



Electrical Engineer Niras A/S  
Lighting Design Haar Holland

Architect Coop Himmelb(l)au, Friis+Moltke  
Photos Kaslov Studio





Photographer Germano Borrelli  
Electrical Engineer Enetec srl

Architect Carlo Carreras  
Architectural Designer Dante Ferretti









Architect: ABDR Architetti Associati - Paolo Desideri  
Photographer: Luigi Filietti



Architect Heatherwick Studio  
Lighting Design Nulty Lighting



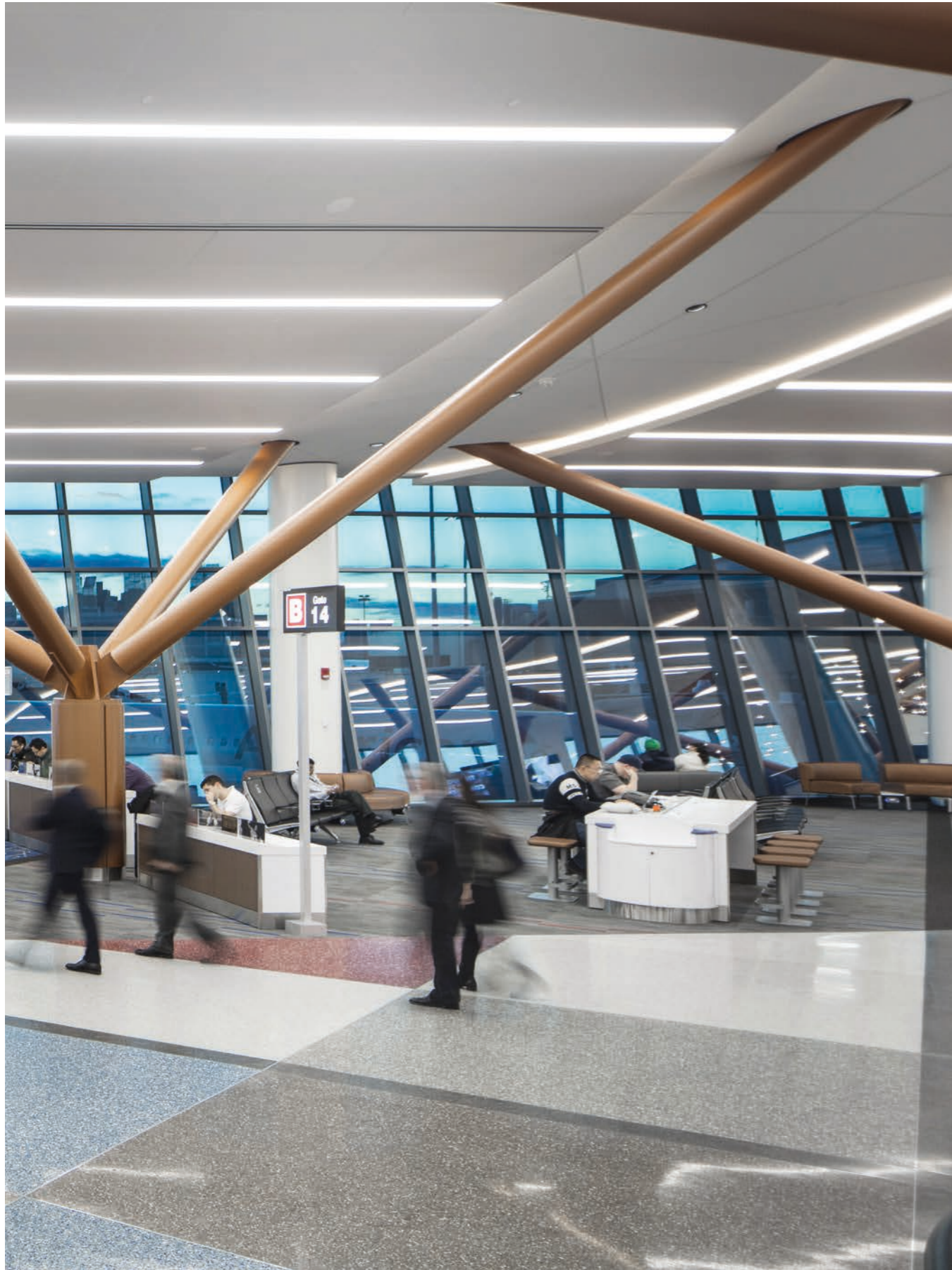
Lighting Design First Circle Design

Architect Gensler  
Photographer Henri Khodaverdi



Photos © 2019 AECOM/ Photographer Robb Williamson  
Awards 2019 Lumen -Illumination Award of Interior Lighting Design

Lighting Design Collaborative Lighting, LLC  
Architect AECOM





Engineer Schaller Tech Team  
Lighting Design Gregory Schaller, Jeins Tinoco

Architect Helmer Junco  
Photographer Sebastián Franco







Photos © SAC Design





Architectural Designer Royo Arquitetura Fornecedores  
Lighting Design Illumination Strategic Design Group



Concept by L'AGENCE VERSIONS



Lighting Design podpod design  
Photographer Gregor Titze





Project Wynn Design & Development  
Photographer Roger Davis, Barbara Kraft



# Retail

Automotive

Fashion

Food

Beauty

## PRODUCTS

81	<b>Motorvillage Torino</b> RAY, CCTLED Downlight	
84	<b>Motorvillage Lisbona</b> RAY, CCT LED Downlight	
86	<b>119 Great North Road Showroom</b> STORE Gimbal, RAY, CCT LED Tube, CCT LED Downlight	
90	<b>Showroom Alpine – Renault</b> CLOUD	
92	<b>DS Store Hasselt Bruyninx</b> KEPLERO Zoom, STORE Gimbal, STORE	
94	<b>DS Store Seoul</b> KEPLERO Mini Zoom, STORE Gimbal	
96	<b>Disney Store</b> KEPLERO Gimbal, KEPLERO Wall Washer	
98	<b>Venchi Shop</b> CLOUD, CLOUD Mini	
102	<b>Dermatologica</b> Pantheon, BeBop, CCTLED Architectural Adjustable, CCTLED Mini	
104	<b>Rinascimento Shop</b> FORTYEIGHT SYSTEM, FOURTYEIGHT LABEL, LABEL 9, STORE GIMBAL, CLOUD, CCTLED Architectural MINI Adjustable	
106	<b>Terranova Store</b> RAY Mini	
108	<b>Seraphine Store</b> STORE	
110	<b>Rossignol Shop</b> LEDÒ, BEBOP, DECANTER, RAY	











Architect Warren & Mahoney (WAM)  
Photographer Simon Devitt





Architect W&Cie



Photographer Eddy Vanoppen





Photographer Dae-il, CHOI



Photographer Tim Franco  
Lighting Design First Circle Design LLC - Matt Levesque



Photographer Ivan Rossi





Le Favolelle  
\*\*\*  
Chocolate  
Bars

Le Favolelle  
\*\*\*  
Chocolate  
Bars

Confezioni  
Regalo  
\*\*\*  
Gift  
Boxes

Fondente  
& Extra  
Fondente  
\*\*\*  
Dark &  
Extra Dark

Fondente  
& Extra  
Fondente  
\*\*\*  
Dark &  
Extra Dark

Latte  
& Bianco  
\*\*\*  
Milk  
& White

Gianduja  
\*\*\*  
Hazelnut  
Paste

Gli Speciali  
\*\*\*  
Specials

Le Nozze  
\*\*\*  
Nocturne

Gli Stagionali  
\*\*\*  
Seasonals

Let's be the best  
Let your imagination run  
- Please do not eat  
- Please do not touch  
- Please do not drink  
- Please do not smoke



Lighting Design Normalite

Architect Limeblue  
Photo Limeblue





Architect WOMAarchitettura - Arch. Teresa D'Alessandro Arch. Caterina Pulcinella





Photo seraphine.com



Photographer Jordane Bodin

Architect Marcelo Joulia Naco  
Architectural Designer Marcelo Joulia Naco



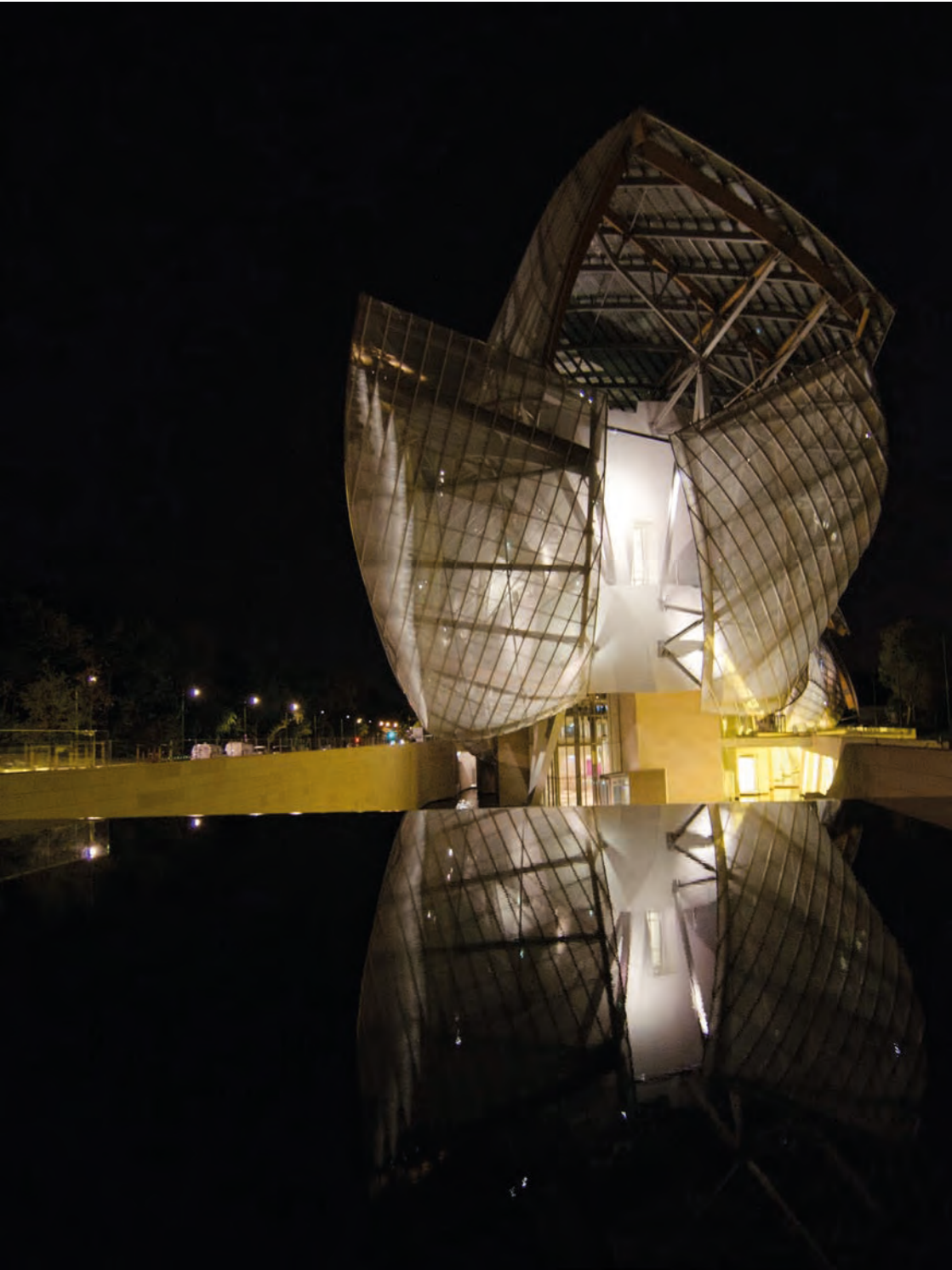
# Museum and Exhibition

Museum  
Gallery  
Exhibition

## PRODUCTS

113	<b>Louis Vuitton Foundation</b> PYROS	
118	<b>Galleria degli Uffizi</b> Custom products, LEDO	
122	<b>MEF – Museo Ettore Fico</b> LEDÒ, DURASTRIP	 
126	<b>Museo Aperto Antonio Asturi</b> CCTLED Architectural Mini Adjustable, CLOUD Mini	 
128	<b>LEGO House</b> LEDÒ, CCTLED Architectural Adjustable	 
132	<b>Museo Stibbert – Le sale giapponesi</b> STORE Mini Projector, CORO Large, OTTO Multi-Optic	  
134	<b>Confucius Museum</b> CCTLED Downlight, CCTLED Architectural Adjustable, CCTLED Downlight Mini, CCTLED Architectural Mini Adjustable, LEDÒ, ZENO Medium	     
138	<b>Museo del Ejercito</b> LEDÒ, CLOUD, RAY	  
139	<b>Abbaye de Maubuisson</b> VOLTA, LOGICO, CCTLED Tube, LABEL 230v, DART Small, DART Medium	     
140	<b>Chapelle du Collège</b> LEDÒ DBS, LEDÒ, JEDI Compact, DURASTRIP RGBW	   
144	<b>APE Parma Museo</b> LEDÒ	

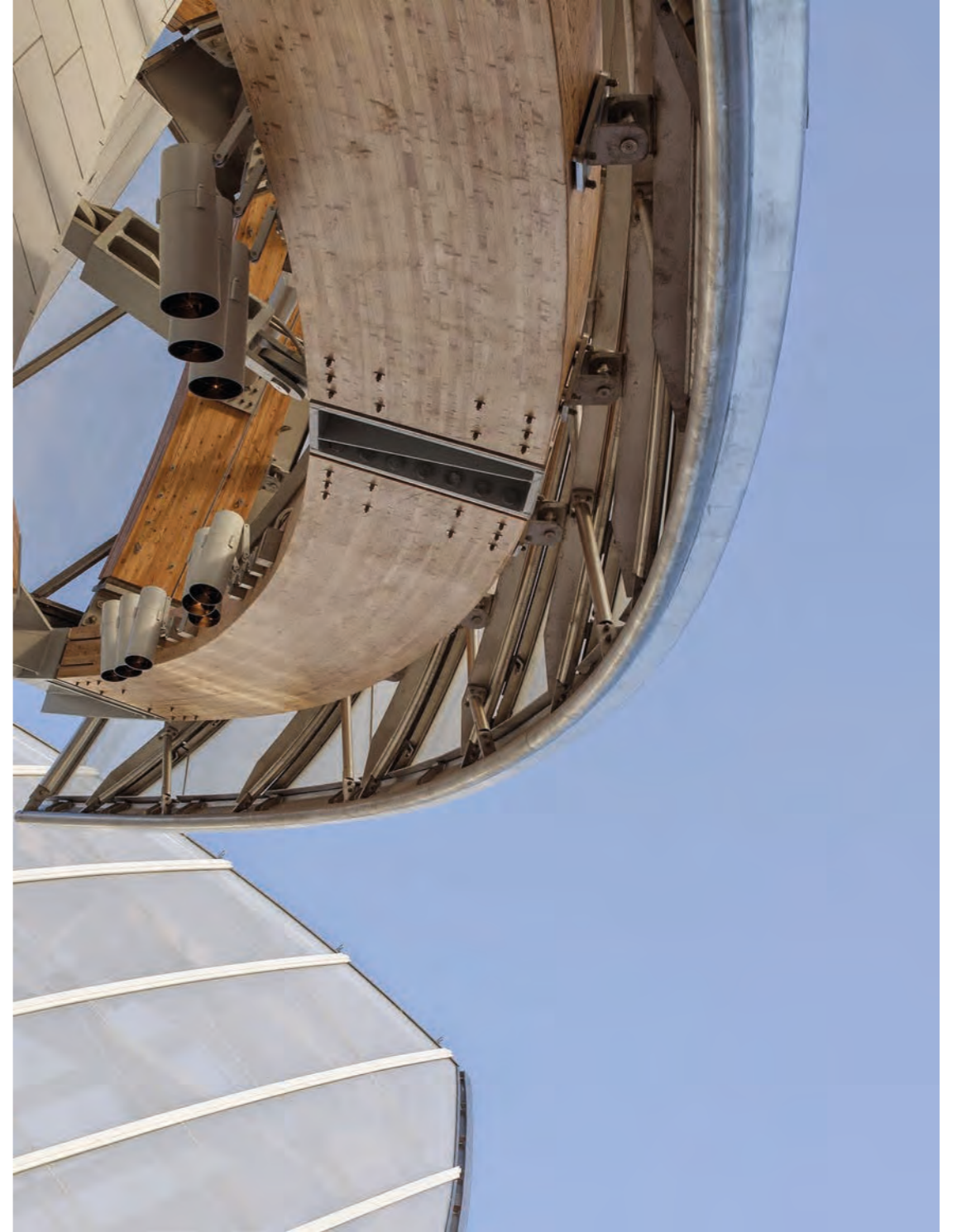




Engineer Setec Bâtiment  
Lighting Design Hervé Descottes (l'Observatoire International)

Architect Gehry Partners, LLP  
Photographer Jordane Bodin







Lighting Design Arch. Massimo Iarussi  
Photo Officine Fotografiche





Architect Alex Cepernich  
Photographer Alessandro Maurelli









Lighting Design: Jesper Kongshaug Lighting Design

Architect: Bjarke Ingels Group  
Photographer: Gary Britton





Photographer Alessandro Maurelli



Landscape Architect Wen Dong  
Photographer Nelson Huang

Architect Liangyong Wu, Chen Wu  
Lighting Design Lie Zhang, Qijun Yao







Photographer Cristina Motilla

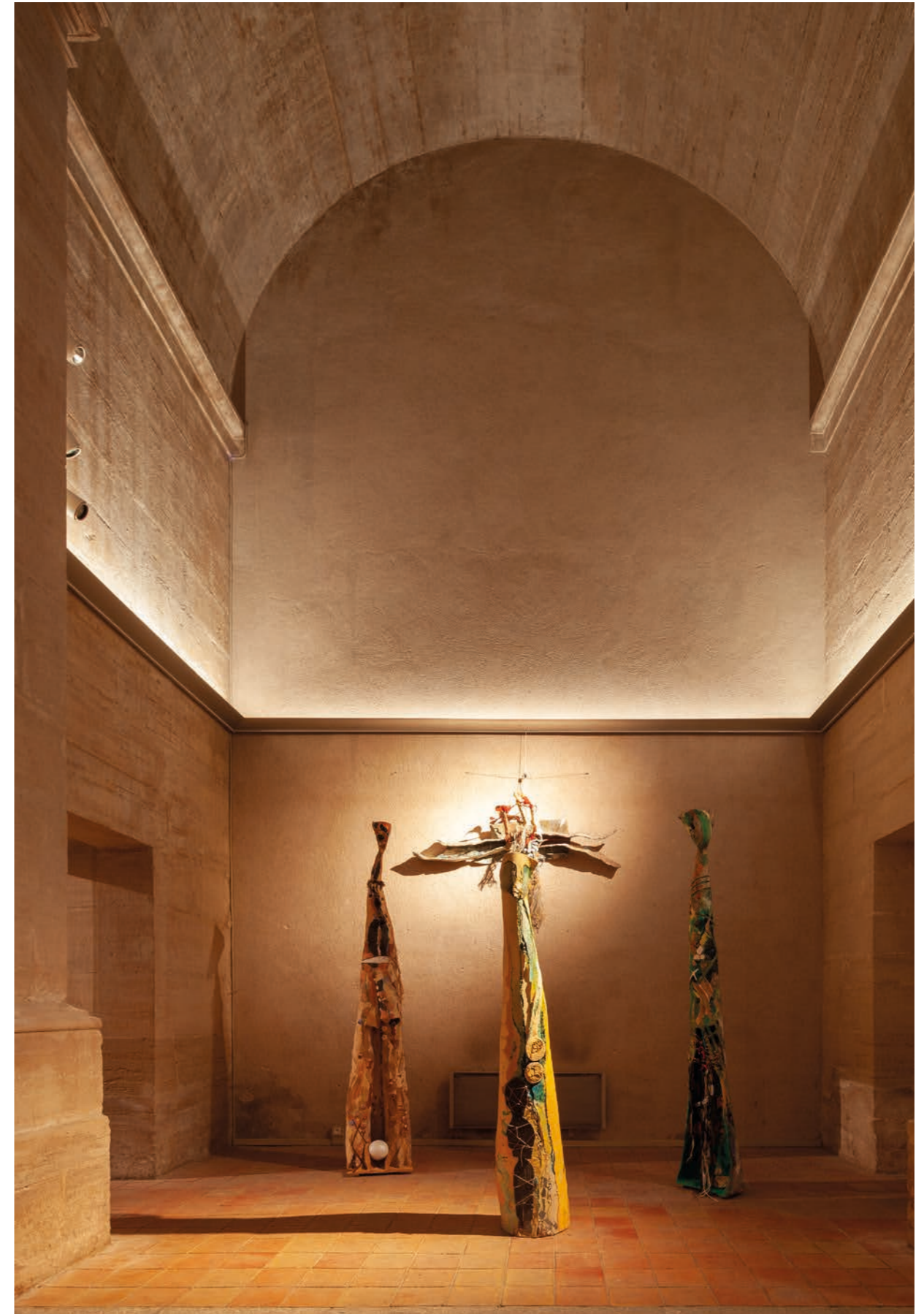


Photographer Bruno Singer

Architect Yves Chemineau YC-A Architecture  
Heritage Architect Aristide Barvaccio



SACHA LERAY EXPOSITION  
Photographer Hugo Hébraud





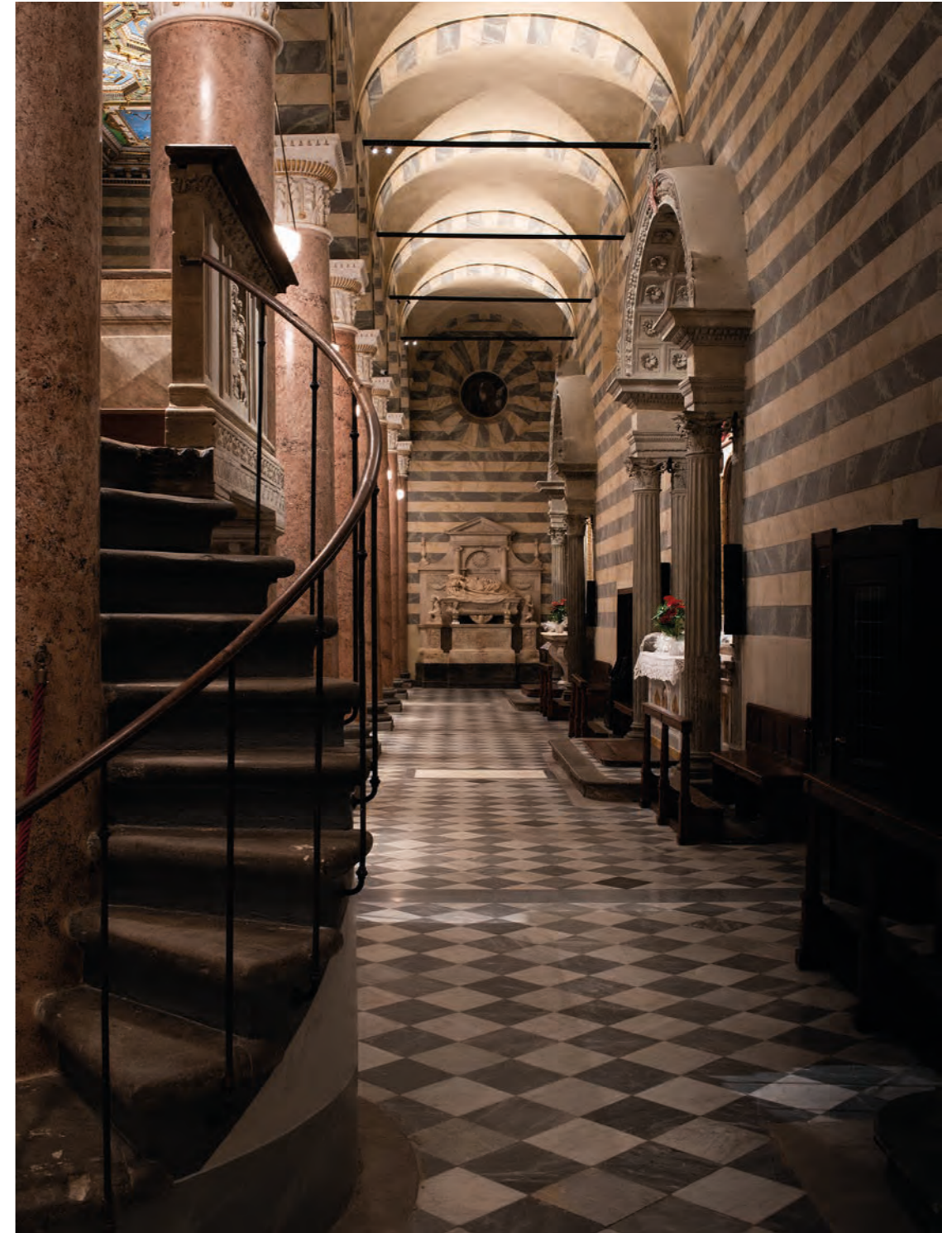


# Sacred and Historical Buildings

Places  
of worship  
Monument  
Historical  
buildings

## PRODUCTS

145	<b>Cattedrale di Santa Maria Assunta</b> ZENO Medium, ZENO Small, FORTYEIGHT LABEL, CORO Large, JEDI Compact IP40, Custom Solutions	
150	<b>Saint Germain du Pré</b> LEDÓ	
154	<b>Catedral Santo Eccehomo</b> CCTLED Downlight, DART Maxi, STORE Gimbal, STORE Mini Projector, ZEDGE, JEDI Compact IP67, CLOUD, DURASTRIP	
158	<b>Cathédrale Notre-Dame de Paris</b> LEDÓ	
160	<b>Loggia del Pesce</b> VOLTA	
162	<b>Campo dei Miracoli</b> PYROS	
166	<b>Torre di Pisa</b> Custom Solutions	
170	<b>Salone dei Cinquecento, Palazzo Vecchio</b> CORO Large, Custom Solutions	
174	<b>Carreau du Temple</b> PYROS	
176	<b>Sala Zuccari, Palazzo Giustiniani</b> JEDI Compact IP40, CORO Small	









Lighting Design Armand Zadjikian  
Photographer Hugo Hebrard



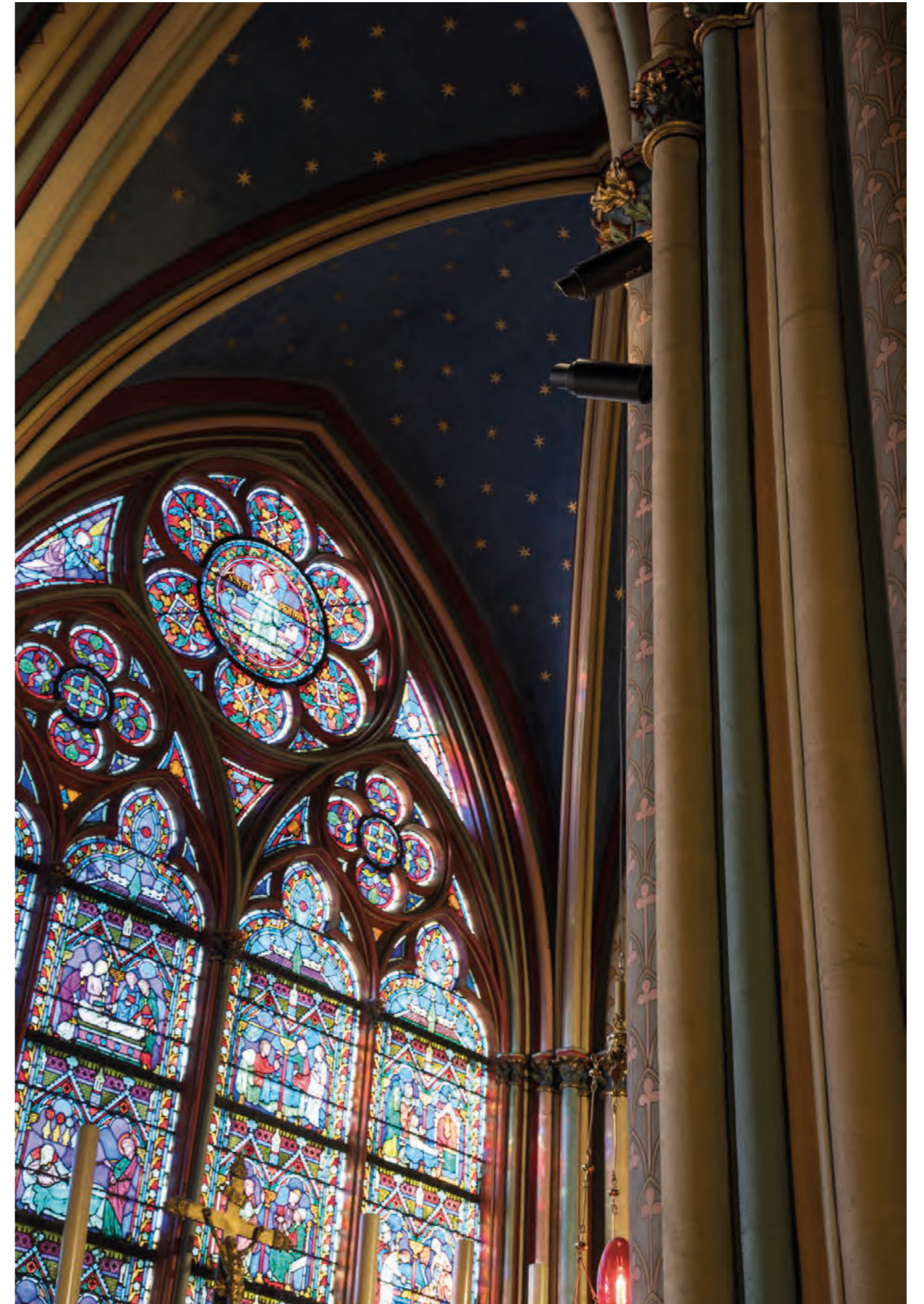


Electrical Engineer Schaller Tech

Architect Gustavo Vasquez  
Photographer Sebastian Franco









Photographer Ivan Rossi





Lighting Design Alessandro Grassia















Architect Studio Milou  
Photographer © Fernando Javier Urquijo



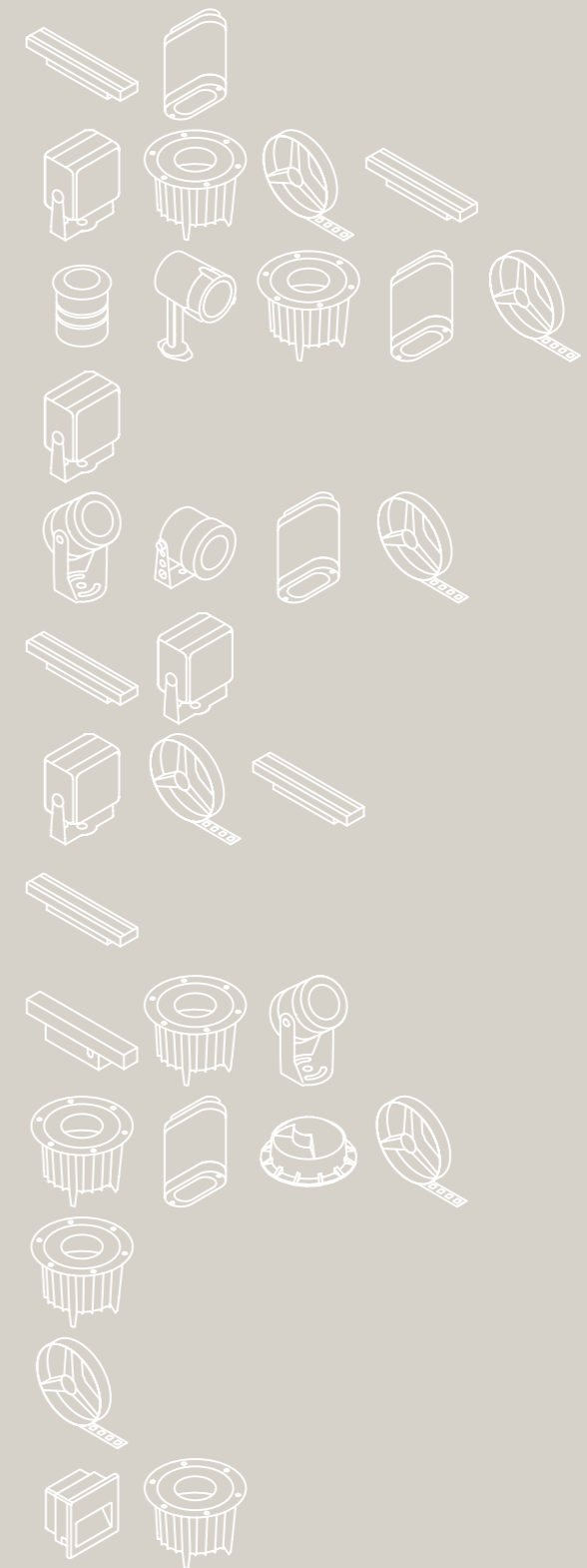
Photographer Alessandro Maurelli

# Outdoor

- [Façade](#)
- [Landscape](#)
- [Park and gardens](#)

## PRODUCTS

- 177 Arma Business Quarter**  
JEDI Projector, STILO Wall Flat
- 180 Piazza della Libertà**  
DART Medium, KEPLERO, DURASTRIP, JEDI Projector, KEPLERO Mini
- 182 Chaoyang Park Plaza**  
LED.Y Monoled, NANO PYROS, KEPLERO Mini Zoom, STILO Wall Streight, DURASTRIP
- 188 Ponte di Rialto**  
Dart Medium
- 192 Troekunov Family Palace**  
JUPITER, JUPITER Mini Projector, LED.Y, STILO Wall Flat, DURASTRIP
- 194 La Comédie de Saint-Étienne**  
JEDI Projector, DART Maxi
- 196 Museo Art Nouveau y Art Déco – Casa Lis**  
DART Medium, DART Mini, DURASTRIP, JEDI Projector
- 198 5300 Mc Connel**  
JEDI Recessed
- 200 Torre Huaycho**  
JEDI Compact IP67, KEPLERO Zoom, KEPLERO Mini Zoom, JUPITER
- 202 Piazza A. de Gasperi**  
KEPLERO, STILO Wall Flat, TITANO, DURASTRIP
- 204 The Pools Park**  
KEPLERO Mini, KEPLERO Mini Zoom
- 206 Edificio Sudamericana**  
DURASTRIP
- 208 1925 East Maple Ave**  
ZEDGE, KEPLERO Mini Zoom





Architect Skip Architectural Bureau  
Photographer Ilya Melikhov



DJ

3A



Photographer Ivan Rossi



Architectural Designer Ma Yansong, MAD Architects









Photographer Ivan Rossi





Lighting Design Tatyana Shkolnikova  
Photographer Ilya Kouzov



Photographer Jerome Ricolleau

Architect Studio Milou  
Lighting Design Les Eclaireurs



Lighting Design Ing. Raquel Herrero, Ayto Salamanca  
Photographer Carlos Horcajada



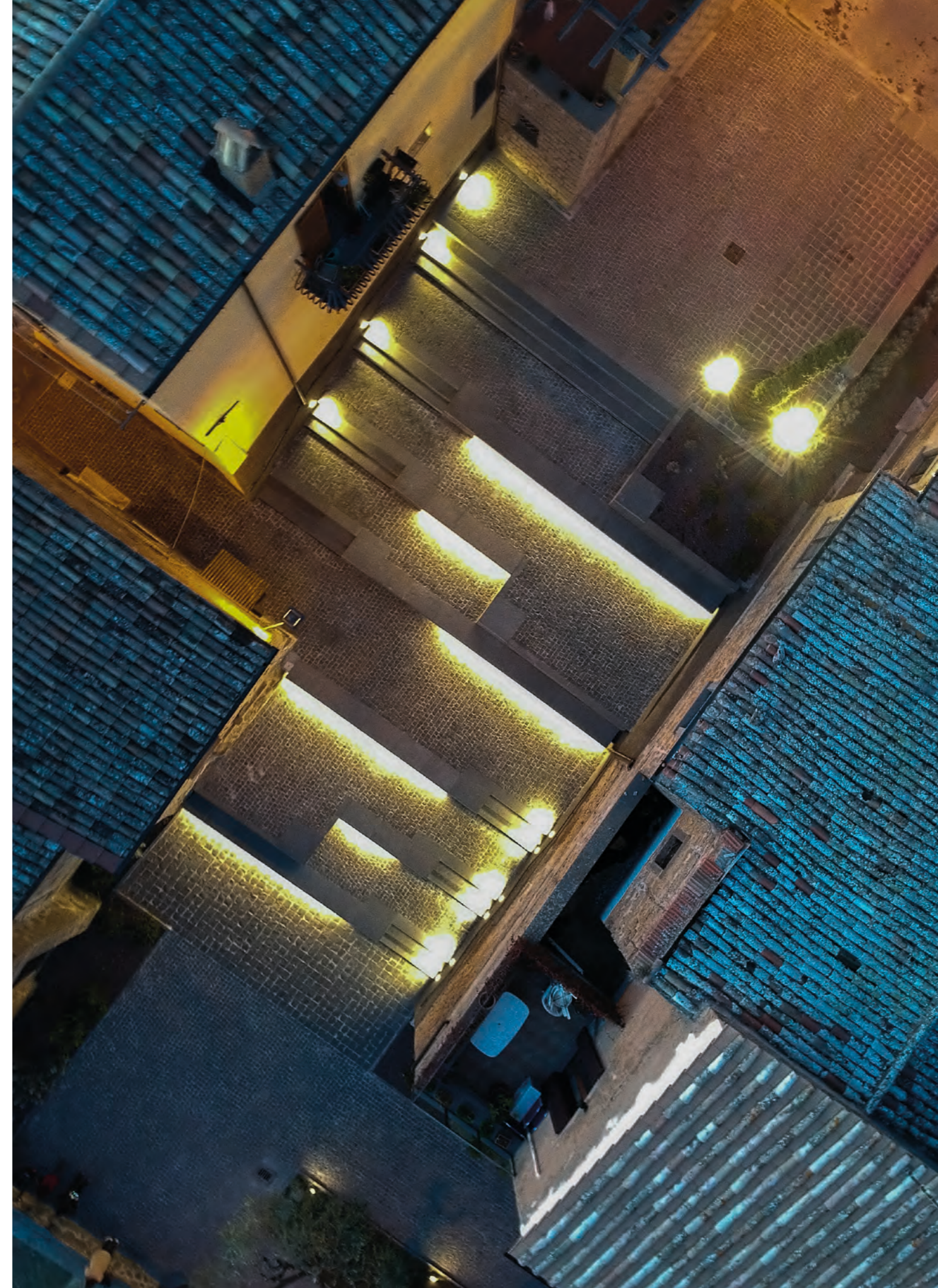
Photos ©Henri Khodaverdi  
Awards Lumen West Award of Merit – Exterior Lighting

Lighting Design Oculus Light Studio  
Architect Shubin+Donaldson Architects





Lighting Design Gerardo Sánchez Sucsa, Pepe Sánchez Sucsa - Instaelec (Cusco)  
Photographer James Aragon Carrasco, Gerardo Sánchez Sucsa





Photographer ©Brad Nelson

Lighting Design StudioK1  
Developer FivePoint Great Park Neighborhoods



Client Arte Express y Compañía SAC  
 Photographer Jose Chemo Orihueta

Lighting Design Mireya Tovar  
 Architect Luciana Soldi





Developer REthink Development and EverWest Real Estate Investors

Lighting Design Oculus Light Studio  
Photos © SAC Design

Targetti

[www.targetti.com](http://www.targetti.com)

Graphic design  
Lcd Firenze

Targetti © 2020

