

## KEY FEATURES

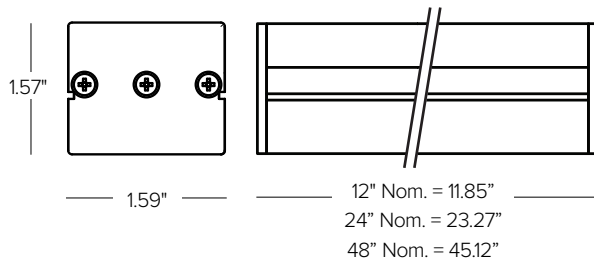
- Line voltage compact linear projector for individual or interconnected configurations.
- Anodized aluminum extrusion with VO polycarbonate external lensing options.
- PCB integral DOB (driver on board) with surge protection.
- Cabled with SJO 18-3 cable and input/output SlimSeal watertight IP67 quick disconnects.



Opal Lens with ORDEV1 Bracket  
Option Shown



## DIMENSIONAL DRAWINGS



## FIXTURE DATA

Model 3000K Clear Lens	Fixture Length	Efficacy* Lm/Wt	Lm	Wt
Flood 112°x110°	12"	48	193Lm	4W
		48	387Lm	8W
		48	774Lm	16W
Wall Grazer 38°x78°	12"	47	189Lm	4W
		47	377Lm	8W
		47	754Lm	16W

\* Meets Title 24 High efficacy rating.

## DETAILS

<b>Lengths</b>	12" / 24" / 48" Nominal
<b>Optics</b>	Internal optics available in Wall Graze 38° x 78° with Clear Lens and Flood 112° x 110° with Clear or Opal Lens.
<b>Color Temp</b>	2700K / 3000K / 3500K
<b>Wattage</b>	4W/ft / 8W/ft / 16W/ft
<b>CRI</b>	Ra+90
<b>Color Consistency</b>	Advanced LED binning with +/- 2-step MacAdam Ellipses
<b>Max Run Length</b>	ELV: connect up to 18ft of 16W linear product on one run or connect up to 36ft of 8W linear product on one run. Connect up to 72ft of 4W linear product on one run. 0-10V: connect up to 4 each 250W zones with up to 4 separate 0-10V dimming inputs.
<b>Mounting</b>	Mounting brackets available separately, see page 2.
<b>Dimming</b>	Electronic Reverse Phase Dimmable. Optional 0-10V to Electronic Reverse Phase Dimming interface available, sold separately.
<b>Voltage</b>	120V AC 50/60Hz
<b>IP Rating</b>	IP65 Outdoor
<b>Certifications</b>	cETLus Listed Tested in accordance with LM-79-08 Energy efficient for California installations.
<b>Warranty</b>	5 year warranty

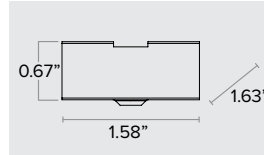
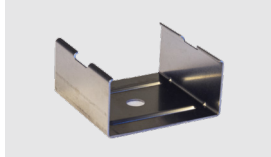
PRODUCT CODE	LOCATION	WATTAGE	DIMMING	LENGTH	OPTICS	EXTERNAL LENS	COLOR TEMP	MOUNTING					
MNL — MiniLine II	O — Outdoor IP65	04 — 4W	EP — Electronic Reverse Phase	12 — 11.85in	FL — Flood 112° X 110°	C — Clear	27U — 2700K	+ See page 2					
									08 — 8W	16 — 16W	WG' — Wall Graze 38° X 78°	O — Opal	30U — 3000K
		08 — 8W	EP — Electronic Reverse Phase	24 — 23.27in	FL — Flood 112° X 110°	C — Clear	27U — 2700K						
									16 — 16W	32 — 32W	30U — 3000K		
												32 — 32W	35U — 3500K
		16 — 16W	EP — Electronic Reverse Phase	48 — 45.12in	WG' — Wall Graze 38° X 78°	O — Opal	30U — 3000K						
									32 — 32W	35U — 3500K			
											64 — 64W	30U — 3000K	

<sup>1</sup> Not available with Opal lens.

**CONNECTION CABLES**

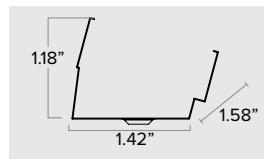
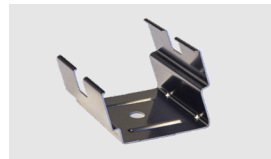
<b>LEAD CONNECTION CABLE (REQUIRED)</b>	
<b>One lead connection required per individual fixture run. Fixture distances and wattage loads shall be installed per NEC or local building code.</b>	
<b>MNLOLEAD-05'</b>	5ft lead SJOW 18-3 120V cable with factory attached IP68 quick disconnect and end cap.
<b>MNLOLEAD-10'</b>	10ft lead SJOW 18-3 120V cable with factory attached IP68 quick disconnect and end cap.
<b>MNLOLEAD-20'</b>	20ft lead SJOW 18-3 120V cable with factory attached IP68 quick disconnect and end cap.
<b>*Consult factory for additional lengths, supplied in 10ft increments.</b>	
<b>JUMPER CONNECTION CABLE (OPTIONAL)</b>	
<b>MNLOJUMP-02'</b>	2ft jumper SJOW 18-3 120V cable with factory attached IP68 quick disconnects.
<b>MNLOJUMP-05'</b>	5ft jumper SJOW 18-3 120V cable with factory attached IP68 quick disconnects.
<b>MNLOJUMP-10'</b>	10ft jumper SJOW 18-3 120V cable with factory attached IP68 quick disconnects.
<b>*Consult factory for additional or custom project specific lengths.</b>	

**MOUNTING OPTIONS**



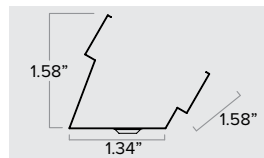
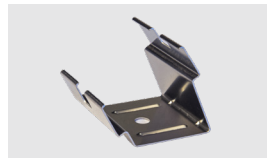
**KTMNLBKTVERT**

Fixed vertical illumination 'spring' mount clip in 316 Stainless Steel. Package of 10pcs, two recommended per fixture module. Stainless steel screws included.



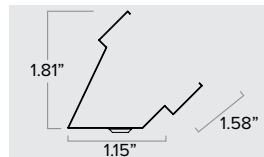
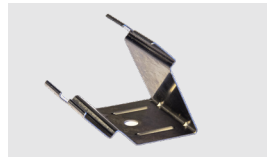
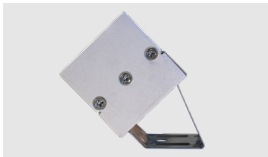
**KTMNLBKT15**

Fixed 15° 'spring' mount clip in 316 Stainless Steel. Package of 10pcs, two recommended per fixture module. Stainless steel screws included.



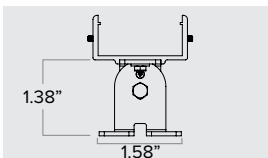
**KTMNLBKT30**

Fixed 30° 'spring' mount clip in 316 Stainless Steel. Package of 10pcs, two recommended per fixture module. Stainless steel screws included.



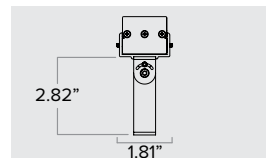
**KTMNLBKT45**

Fixed 45° 'snap' mount clip in 316 Stainless Steel. Package of 10pcs, two recommended per fixture module. Stainless steel screws included.



**ORDEV1**

Adjustable mounting bracket. Allows for 50° tilt in both directions. Can be mounted at multiple positions along the length of the fixture. Sold in pairs of 2pcs. Two brackets recommended for mounting per fixture module.



**ORDEV2**

Adjustable mounting bracket. Allows for 50° tilt in both directions. Can be mounted at multiple positions along the length of the fixture. Sold in pairs of 2pcs. Two brackets recommended for mounting per fixture module.



ORDEV1 Mounting Bracket Shown

Converter (REQUIRED for 0-10V Control)	Type	Output Wattage	# Output Channels	Input Voltage	Rating	Dimensions
<b>DEL10EP4C300</b>	0-10V to Electronic Reverse Phase Dimmer Module	4 x 250W	4	120V	Indoor IP20	4.6" X 4.75" x 3.75"

**Converter Wiring Diagram**



\*Connect up to 18ft of 16W linear product on one run or connect up to 75ft of 4W linear product on one run.  
**Note: Install according to local and NEC building codes.**

**PHOTOMETRY**

FLOOD CLEAR LENS			POLAR GRAPH *GRAPH REPRESENTS 16W VERSION
Fixture Power	4W (12")	8W (12")	16W (12")
Fixture Output	186Lm	371Lm	743Lm
Kelvin Temp	2700K	2700K	2700K
Beam Spread	112° x 110°	112° x 110°	112° x 110°
I <sub>Max</sub>	106cd/klm	212cd/klm	423cd/klm
Efficacy	47 Lm/W	46 Lm/W	46 Lm/W

The polar graph shows a yellow shaded area representing the beam spread. The vertical axis is labeled "Gamma Angles" with markings at 15°, 30°, 45°, 60°, 75°, 90°, 105°, and 120°. The horizontal axis is labeled "Gamma Angles" with markings at 30°, 15°, 0°, 15°, and 30°. The graph shows a beam spread of 112° x 110°.

FLOOD CLEAR LENS			POLAR GRAPH *GRAPH REPRESENTS 16W VERSION
Fixture Power	4W (12")	8W (12")	16W (12")
Fixture Output	193Lm	387Lm	774Lm
Kelvin Temp	3000K	3000K	3000K
Beam Spread	112° x 110°	112° x 110°	112° x 110°
I <sub>Max</sub>	110cd/klm	220cd/klm	441cd/klm
Efficacy	48 Lm/W	48 Lm/W	48 Lm/W

The polar graph shows a yellow shaded area representing the beam spread. The vertical axis is labeled "Gamma Angles" with markings at 15°, 30°, 45°, 60°, 75°, 90°, 105°, and 120°. The horizontal axis is labeled "Gamma Angles" with markings at 30°, 15°, 0°, 15°, and 30°. The graph shows a beam spread of 112° x 110°.

**PHOTOMETRY (CONT.)**

FLOOD CLEAR LENS				POLAR GRAPH *GRAPH REPRESENTS 16W VERSION
Fixture Power	4W (12")	8W (12")	16W (12")	
Fixture Output	207Lm	414Lm	728Lm	
Kelvin Temp	3500K	3500K	3500K	
Beam Spread	112° x 110°	112° x 110°	112° x 110°	
IMax	118cd/klm	236cd/klm	472cd/klm	
Efficacy	52 Lm/W	52 Lm/W	46 Lm/W	

FLOOD CLEAR LENS				POLAR GRAPH *GRAPH REPRESENTS 32W VERSION
Fixture Power	8W (24")	16W (24")	32W (24")	
Fixture Output	382Lm	763Lm	1527Lm	
Kelvin Temp	2700K	2700K	2700K	
Beam Spread	112° x 110°	112° x 110°	112° x 110°	
IMax	103cd/klm	207cd/klm	413cd/klm	
Efficacy	48 Lm/W	48 Lm/W	48 Lm/W	

FLOOD CLEAR LENS				POLAR GRAPH *GRAPH REPRESENTS 32W VERSION
Fixture Power	8W (24")	16W (24")	32W (24")	
Fixture Output	398Lm	795Lm	1590Lm	
Kelvin Temp	3000K	3000K	3000K	
Beam Spread	112° x 110°	112° x 110°	112° x 110°	
IMax	108cd/klm	215cd/klm	431cd/klm	
Efficacy	50 Lm/W	50 Lm/W	50 Lm/W	

FLOOD CLEAR LENS				POLAR GRAPH *GRAPH REPRESENTS 32W VERSION
Fixture Power	8W (24")	16W (24")	32W (24")	
Fixture Output	425Lm	851Lm	1702Lm	
Kelvin Temp	3500K	3500K	3500K	
Beam Spread	112° x 110°	112° x 110°	112° x 110°	
IMax	115cd/klm	230cd/klm	461cd/klm	
Efficacy	53 Lm/W	53 Lm/W	53 Lm/W	

**PHOTOMETRY (CONT.)**

FLOOD CLEAR LENS				POLAR GRAPH *GRAPH REPRESENTS 64W VERSION
Fixture Power	16W (48")	32W (48")	64W (48")	
Fixture Output	763Lm	1527Lm	3053Lm	
Kelvin Temp	2700K	2700K	2700K	
Beam Spread	112° x 110°	112° x 110°	112° x 110°	
IMax	207cd/klm	413cd/klm	827cd/klm	
Efficacy	48 Lm/W	48 Lm/W	48 Lm/W	

FLOOD CLEAR LENS				POLAR GRAPH *GRAPH REPRESENTS 64W VERSION
Fixture Power	16W (48")	32W (48")	64W (48")	
Fixture Output	795Lm	1590Lm	3180Lm	
Kelvin Temp	3000K	3000K	3000K	
Beam Spread	112° x 110°	112° x 110°	112° x 110°	
IMax	215cd/klm	431cd/klm	861cd/klm	
Efficacy	50 Lm/W	50 Lm/W	50 Lm/W	

FLOOD CLEAR LENS				POLAR GRAPH *GRAPH REPRESENTS 32W VERSION
Fixture Power	16W (48")	32W (48")	64W (48")	
Fixture Output	843Lm	1702Lm	3371Lm	
Kelvin Temp	3500K	3500K	3500K	
Beam Spread	112° x 110°	112° x 110°	112° x 110°	
IMax	228cd/klm	461cd/klm	913cd/klm	
Efficacy	53 Lm/W	53 Lm/W	53 Lm/W	

WALL GRAZE CLEAR LENS				POLAR GRAPH *GRAPH REPRESENTS 16W VERSION
Fixture Power	4W (12")	8W (12")	16W (12")	
Fixture Output	181Lm	362Lm	724Lm	
Kelvin Temp	2700K	2700K	2700K	
Beam Spread	38° x 78°	38° x 78°	38° x 78°	
IMax	190cd/klm	380cd/klm	760cd/klm	
Efficacy	45 Lm/W	45 Lm/W	45 Lm/W	

### PHOTOMETRY (CONT.)

WALL GRAZE CLEAR LENS				POLAR GRAPH *GRAPH REPRESENTS 16W VERSION
Fixture Power	4W (12")	8W (12")	16W (12")	
Fixture Output	189Lm	377Lm	754Lm	
Kelvin Temp	3000K	3000K	3000K	
Beam Spread	38° x 78°	38° x 78°	38° x 78°	
IMax	198cd/klm	396cd/klm	791cd/klm	
Efficacy	47 Lm/W	47 Lm/W	47 Lm/W	

WALL GRAZE CLEAR LENS				POLAR GRAPH *GRAPH REPRESENTS 16W VERSION
Fixture Power	4W (12")	8W (12")	16W (12")	
Fixture Output	200Lm	400Lm	807Lm	
Kelvin Temp	3500K	3500K	3500K	
Beam Spread	38° x 78°	38° x 78°	38° x 78°	
IMax	210cd/klm	419cd/klm	847cd/klm	
Efficacy	50 Lm/W	50 Lm/W	50 Lm/W	

WALL GRAZE CLEAR LENS				POLAR GRAPH *GRAPH REPRESENTS 32W VERSION
Fixture Power	8W (24")	16W (24")	32W (24")	
Fixture Output	373Lm	745Lm	1490Lm	
Kelvin Temp	2700K	2700K	2700K	
Beam Spread	38° x 78°	38° x 78°	38° x 78°	
IMax	186cd/klm	371cd/klm	743cd/klm	
Efficacy	47 Lm/W	47 Lm/W	47 Lm/W	

WALL GRAZE CLEAR LENS				POLAR GRAPH *GRAPH REPRESENTS 32W VERSION
Fixture Power	8W (24")	16W (24")	32W (24")	
Fixture Output	388Lm	776Lm	1552Lm	
Kelvin Temp	3000K	3000K	3000K	
Beam Spread	38° x 78°	38° x 78°	38° x 78°	
IMax	193cd/klm	387cd/klm	773cd/klm	
Efficacy	49 Lm/W	49 Lm/W	49 Lm/W	

**PHOTOMETRY (CONT.)**

WALL GRAZE CLEAR LENS				POLAR GRAPH *GRAPH REPRESENTS 32W VERSION
Fixture Power	8W (24")	16W (24")	32W (24")	
Fixture Output	414Lm	830Lm	1661Lm	
Kelvin Temp	3500K	3500K	3500K	
Beam Spread	38° x 78°	38° x 78°	38° x 78°	
IMax	207cd/klm	414cd/klm	828cd/klm	
Efficacy	52 Lm/W	52 Lm/W	52 Lm/W	

WALL GRAZE CLEAR LENS				POLAR GRAPH *GRAPH REPRESENTS 64W VERSION
Fixture Power	16W (48")	32W (48")	64W (48")	
Fixture Output	745Lm	1490Lm	2980Lm	
Kelvin Temp	2700K	2700K	2700K	
Beam Spread	38° x 78°	38° x 78°	38° x 78°	
IMax	371cd/klm	743cd/klm	1485cd/klm	
Efficacy	47 Lm/W	47 Lm/W	47 Lm/W	

WALL GRAZE CLEAR LENS				POLAR GRAPH *GRAPH REPRESENTS 64W VERSION
Fixture Power	16W (48")	32W (48")	64W (48")	
Fixture Output	776Lm	1552Lm	3104Lm	
Kelvin Temp	3000K	3000K	3000K	
Beam Spread	38° x 78°	38° x 78°	38° x 78°	
IMax	387cd/klm	773cd/klm	1547cd/klm	
Efficacy	49 Lm/W	49 Lm/W	49 Lm/W	

WALL GRAZE CLEAR LENS				POLAR GRAPH *GRAPH REPRESENTS 64W VERSION
Fixture Power	16W (48")	32W (48")	64W (48")	
Fixture Output	830Lm	1661Lm	3322Lm	
Kelvin Temp	3500K	3500K	3500K	
Beam Spread	38° x 78°	38° x 78°	38° x 78°	
IMax	414cd/klm	828cd/klm	1655cd/klm	
Efficacy	52 Lm/W	52 Lm/W	52 Lm/W	