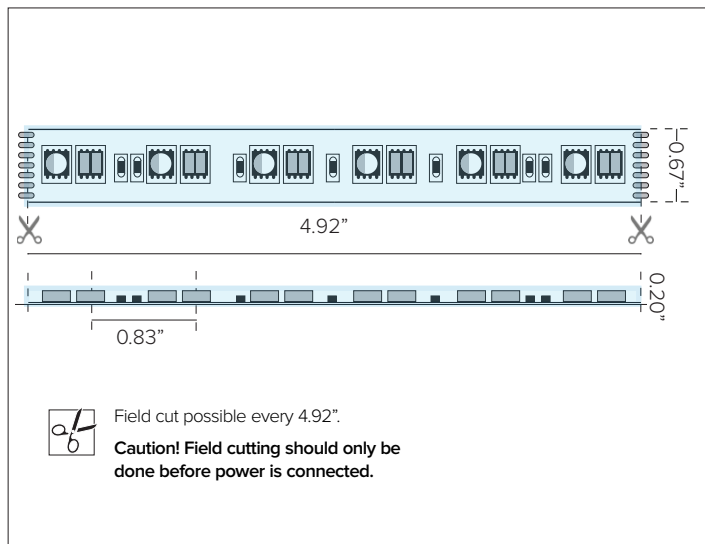


DURATAPE EXTREME TUNABLE IP65

Dynamic Color Changing Energy Efficient Low Voltage Strip Light



CONCEPT

Color changing strip with both full spectrum RGBA and Tunable White CCT all combined in one linear strip! DURATAPE Extreme Tunable gives the designer the freedom to choose previously unthinkable shades of light without using complex electronic equipment and create the most diverse and new, pleasant and amazing lighting scenes using just one strip.

MECHANICAL CHARACTERISTICS

Materials	Features 6-circuit substrate for optimum heat dissipation, minimizing voltage drop while increasing run lengths per power feed, standardizing electrical flow over entire length of the strip for maximum product reliability.
Functionality	Ideal for IP65 outdoor applications such as cove, niche, architectural decorative application, lighting accents, custom and OEM product designs/chandeliers.
Installation	Field cuttable. Manufacturer pre-assembled to specific project lengths with factory attached end prep assemblies to be mounted or inserted into thermally protective profiles, see available options. Suitable for MRI installations. Driver to be mounted outside of MRI room and to be used with PVC or aluminum profiles only. To be installed with adhesive or MRI safe hardware only, no factory provided mounting hardware to be used.
Protection	IP65

CERTIFICATIONS

cULus Class 2 Listed E471161
 Tested in accordance with LM-79-08
 Energy efficient for California installations.
 RoHS compliant

WARRANTY

5 year limited warranty

SUSTAINABILITY

DURATAPE products are packaged with environmentally friendly materials. The strip reel is comprised of cardboard and the strip bag is produced with 80% paper materials and 20% recycled plastics necessary for anti-static packaging.

ELECTRICAL CHARACTERISTICS

Power Connection	Factory attached end prep, see available options. Remote Class 2 power supply with DMX/RGBW interface required, see available options. Refer to Targetti Onsite Services for additional programming and installation support.
Wattage	6.9W/ft / 6 Chan
Voltage	24V DC
Trigger Time	< 0.2s
Operating Temp.	-25°C / +35°C
Max Continuous Length	Field trimmable every 4.92". 14ft per run

SOURCE

LEDs	29 LEDs/ft RGBA quad-chip + TW			
Spacing	0.83" O.C. LED Spacing			
TM30	CCT (Nominal)	CRI	SDCM	
	RGBA 1600K	—	3	
	TW 3000K-6500K	80	3	
Strip & LED Details	Model	W/LED	Delivered Lumens*	Viewing Angle
	Extreme Tunable CCT	0.24W	381Lm/ft	121°
	* Meets Title 24 High efficacy rating.			
Efficacy	55Lm/W			
Lifetime	L70/B10 ≥50,000hrs at max TA +25°C			

DURATAPE EXTREME TUNABLE IP65

SPECIFICATION INFORMATION

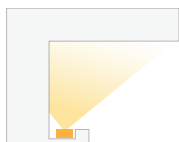
DL									
1	2	3	4	5	6	7	8	9	10
							REQUIRED		OPTIONAL

Ex: DLET606C24 / 07UI6CBL1 / PRAP-U / DEDDX1001246CDMX

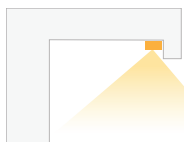
1 - PRODUCT CODE	2 - TYPE	3 - WATTAGE	4 - RATING	5 - KELVIN	6 - VOLTAGE
DL — DURATAPE™	ET — Extreme Tunable CCT	69 — 6.9W/ft	O — IP65	6C — RGBA + TW	24 — 24V DC
7 - END PREP CONNECTION	8 - MOUNTING	9 - DRIVER	10 - CONTROL		
REQUIRED See section for details	REQUIRED See section for details	REQUIRED See section for details	OPTIONAL See section for details		

INSTALLATION EXAMPLES

COVE



UNDER COUNTER
TASK



DURATAPE EXTREME TUNABLE IP65

7 - END PREP CONNECTION (REQUIRED)



DURATAPE factory attached single 4 circuit lead wire end prep. Lead wire/dead end allows for connection to power at lead end and field trim of Duratape product at the other end. Translucent wire with positive/negative identification that easily blends into the mounting environments.

Part No. **07UX6CBL1**

DURATAPE additional factory attached lead wire, sold per foot. Lead wire can be field cut to desired length.

Length Per foot

Part No. **07UX6ADDCBL**



DURATAPE factory attached double 6 circuit lead wire end prep. One end can be used for power connectivity while the other end can be used for DURATAPE interconnection. Translucent wire with positive/negative identification that easily blends into the mounting environments. **Caution: Pay attention to max run lengths and voltage drops from total lead/fold wire lengths.**

Part No. **07UX6CBL2**

DURATAPE additional factory attached lead wire, sold per foot. Lead wire can be field cut to desired length.

Length Per foot

Part No. **07UX6ADDCBL**

7 - END PREP CONNECTION (OPTIONAL)



DURATAPE 6 circuit crimp connectors, 7ea. Simplifies custom splice connections in the field. To be used for in-line connections, connecting to other lead wires, etc.

Part No. **07U6XADDCON**

DURATAPE EXTREME TUNABLE IP65

8 - MOUNTING (REQUIRED)



Profile Spec Sheet
Detailed Information



Uniform Continuous Direct View
60%



Blend Opacity
30%

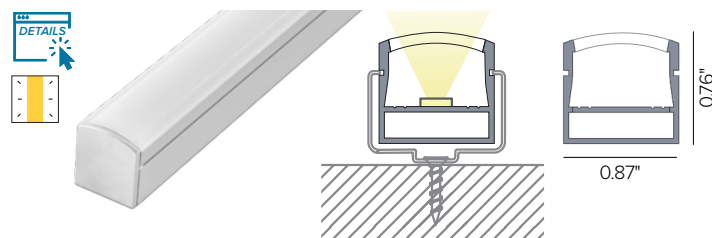


Softening Opacity
10%



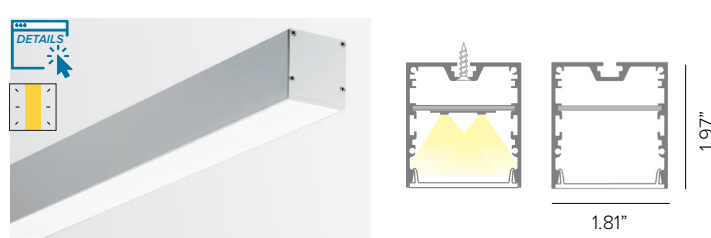
Clear

SURFACE PROFILES



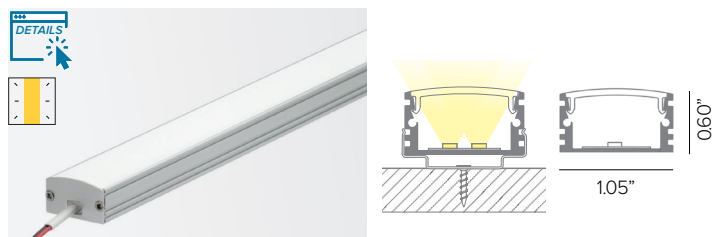
Universal surface mount anodized aluminum rigid profile complete with lens.
Dimension: 79"L (2M)

Lens	Opal Diffused	Asymmetric	Graze	Flood
Part No.	PRAP-U	PRAP-UASYM	PRAP-U30	PRAP-U60



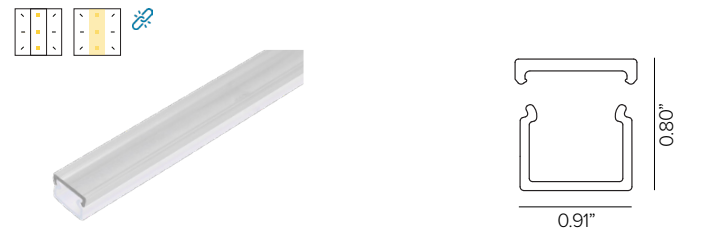
Aluminum profile with frosted polycarbonate lens for suspension installation.
Dimension: 79" L (2M).

Part No. **P01L-S-PF-200**



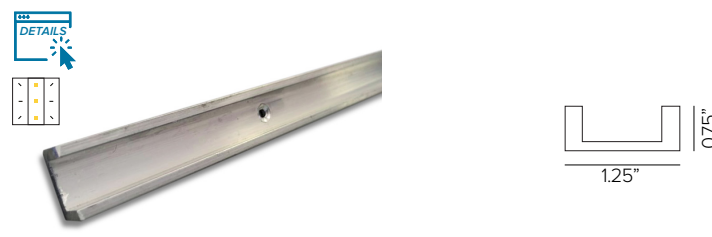
Aluminum profile with frosted polycarbonate lens for surface installation.
Dimension: 118"L (3M). **Profile must be shipped via freight only. For efficient shipping via UPS/FedEx, lengths can be cut to 59" upon request.**

Part No. **P04B-S-PF-300**



Two-piece PVC mounting tube; white opaque base with cover (clear or frosted).
Countersink screw holes, 12" O.C. Dimension: 96"L

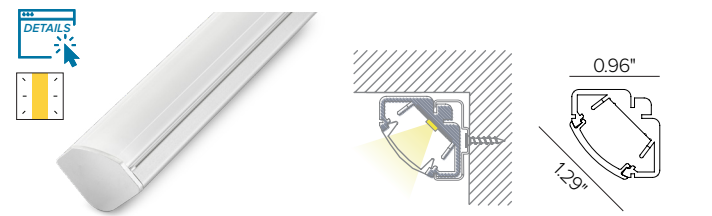
Cover Diffusion	Clear	Frosted 10%	Frosted 30%	Frosted 60%
Part No.	DLHV2PCC	DLHV2PCF10-8	DLHV2PCF30-8	DLHV2PCF60-8



Rigid aluminum "U" channel. Countersink screw holes, 12" O.C. Dimension: 96"L.

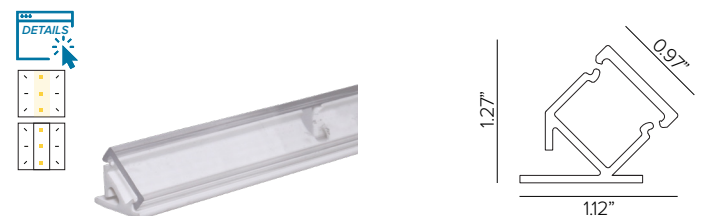
Part No. **DL88ALUMU8**

ANGLED PROFILES



Universal 45° corner anodized aluminum rigid profile complete with lens.
Dimension: 79"L (2M)

Lens	Opal Diffused	Asymmetric	Graze	Flood
Part No.	PRAN-U	PRAN-UASYM	PRAN-U30	PRAN-U60



Two-piece 45° PVC mounting tube; white opaque base with cover (clear or frosted).
Countersink screw holes, 12" O.C. Dimension: 96"L

Base Part No.	DLHV45MCH-8			
Cover Diffusion	Clear	Frosted 10%	Frosted 30%	Frosted 60%
Cover Part No.	DLHV45CVR-8C	DLHV45CVR-8F10	DLHV45CVR-8F30	DLHV45CVR-8F60

DURATAPE EXTREME TUNABLE IP65

8 - MOUNTING CONT. (REQUIRED)



Profile Spec Sheet
Detailed Information



Uniform
Continuous
Direct View
60%



Blend Opacity
30%

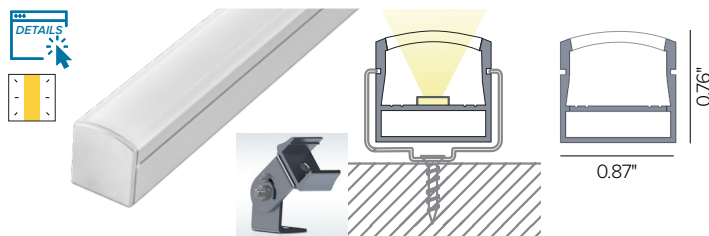


Softening
Opacity
10%



Clear

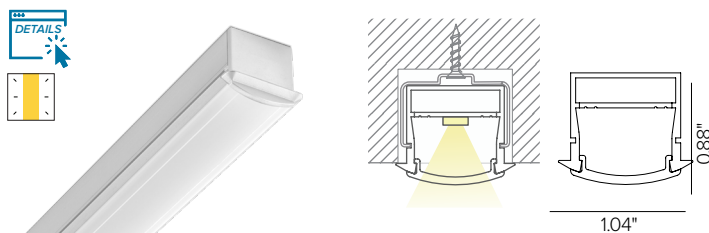
ADJUSTABLE PROFILES



Universal surface mount anodized aluminum rigid profile complete with lens. Surface Dimension: 79"L (2M)

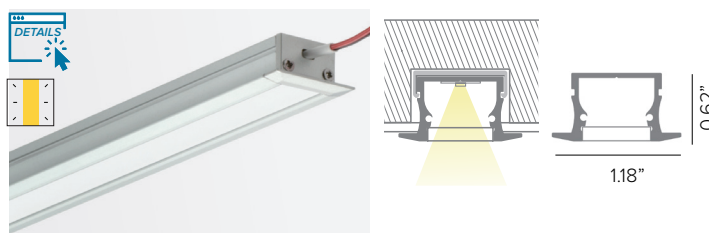
Lens	Opal Diffused	Asymmetric	Graze	Flood
Part No.	PRAP-U	PRAP-UASYM	PRAP-U30	PRAP-U60

RECESSED PROFILES



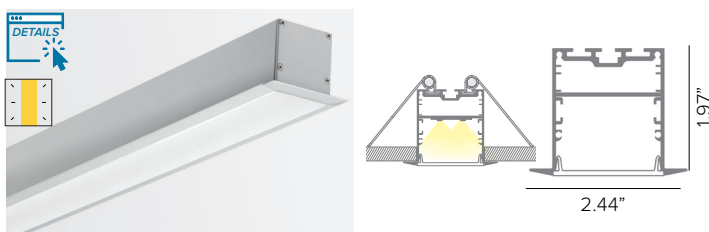
Universal flush mount anodized aluminum rigid profile complete with lens. Dimension: 79"L (2M)

Lens	Opal Diffused	Asymmetric	Graze	Flood
Part No.	PRIN-U	PRIN-UASYM	PRIN-U30	PRIN-U60



Aluminum profile with frosted polycarbonate lens for recessed installation. Dimension: 118"L (3M). **Profile must be shipped via freight only. For efficient shipping via UPS/FedEx, lengths can be cut to 59" upon request.**

Part No. **P04H-S-PF-300**



Aluminum profile with opal polycarbonate lens for recessed installation. Dimension: 79"L (2M).

Part No. **P08D-S-PF-200**

DURATAPE EXTREME TUNABLE IP65





9 - POWER SUPPLY (REQUIRED)

ENCLOSURE								
Part No.	Wattage	Control	Dim Range	Rating	In / Out Voltage	Certification	Dimensions (Enclosure)	Description
DEDDX1001246CDMX	100W	DMX 6 Chan	0%	NEMA3R	120-277V / 24V	UL Class 2	12" x 12" x 4"	EldoLED LINEARdrive electronic driver.
DEDDX2002246CDMX	2X100W	DMX 6 Chan	0%	NEMA3R	120-277V / 24V	UL Class 2	12" x 12" x 4"	EldoLED LINEARdrive electronic driver.

MAX INTERCONNECTED TAPE LENGTHS PER DRIVER

Fixture Wattage	MAX INTERCONNECTED TAPE LENGTHS PER DRIVER	
	100W	2X100W
6.9W	11FT	(2) 11FT

10 - CONTROL (OPTIONAL)

Part No.		Channels	Scenes	Zones	Rating	Voltage	Certification	Dimensions	Description
TGDMXSLES9		256	20	1	Indoor	5.5V DC	ETL, UL	5.3"W x 5.5"H x 1.9D	Nicolaudie Slesa smart DMX 1/2 universe programmable controller with easy to use software interface.
TGDMXSLES11		1024	99	5	Indoor	5VDC 120V AC <i>Plug in power supply included</i>	ETL	6.3" x 3.6" x 1.8"	Nicolaudie Slesa smart DMX interface, 2 DMX 512 universes, intuitive backlit keyboard programmable controller with easy to use software interface.
TGDMXSTICKDE3B		1024	500	10	Indoor	6-7V DC 120V AC <i>Plug in power supply included</i>	ETL	5.8" x 4.2" x 0.5"	Nicolaudie intelligent control keypad with glass touch sensitive graphic display, stand-alone DMX 512, 2 universe programmable controller with easy to use software interface. Black finish.
TGDMXSTICKDE3W		1024	500	10	Indoor	6-7V DC 120V AC <i>Plug in power supply included</i>	ETL	5.8" x 4.2" x 0.5"	Nicolaudie intelligent control keypad with glass touch sensitive graphic display, stand-alone DMX 512, 2 universe programmable controller with easy to use software interface. White finish.

PHOTOMETRY

IES FILES SHOWN AT 1M (3.28FT) LENGTHS

950187	Imax=317cd/klm	4000K	H(m)	D(m)	Emax(lx)
		Ra80			121°
		Fixture Power	23W	1	3.57
		Source Flux	1250lm	2	7.13
		Fixture Flux	1250lm	3	10.70
		Efficacy	54lm/W	4	14.27
		Imax	396cd	5	17.83