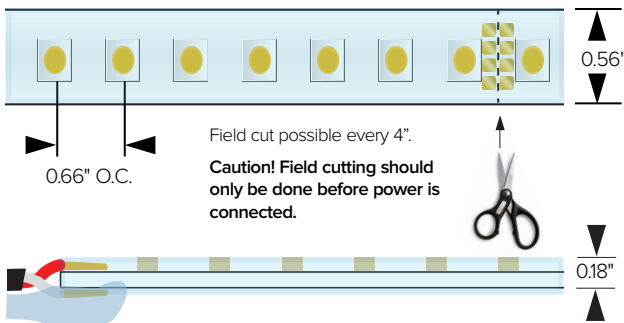


### KEY FEATURES

- High output saturated sharp RGB tones working together to create dynamic color changing effects.
- Ideal for IP66 outdoor applications such as cove, niche, architectural decorative application, lighting accents, custom and OEM product designs/chandliers.
- Sold per foot and manufactured to specified lengths with factory attached end preps.
- Features 2-circuit substrate for optimum heat dissipation, minimizing voltage drop while increasing run lengths per power feed, standardizing electrical flow over entire length of the strip for maximum product reliability.
- Features double sided solder points for maximum conductivity and durability.
- Pre-assembled to specific lengths with various connector options for project requirements and efficient power configuration.
- Max continuous length: up to 16' per run
- Multiple DMX512 drivers options available.

### DIMENSIONAL DRAWINGS



Duratape features double-sided solder points for maximum continuity for long lifespan.

### DESIGN INSTALLATION EXAMPLES



### DETAILS

<b>Spacing</b>	0.66" OC LED Spacing
<b>LEDs</b>	18 LEDs per foot
<b>Wattage</b>	3.5W/ft
<b>Color Temp</b>	Tri Chip: Red 625nm / Green 520nm / Blue 450nm
<b>Color Consistency</b>	Bin centered on the Planck curve with a 2 step MacAdam tolerance.
<b>End Preps</b>	Factory prepped end preps available (See Page 2)
<b>Mounting</b>	Includes installation-ready 3M tape adhesive for simplified installation directly to mounting channel or application surface
<b>Installation</b>	Optional aluminum channels with base and cover can be used to install decorative, protective covers
<b>Power Supply</b>	Listed Class 2 output, 24V DC power supply required
<b>Listing</b>	cULus Class 2 Listed E471161 Tested in accordance with LM-79-08 Energy efficient for California installations.
<b>Compliance</b>	ROHS compliant MRI Safe, driver to be mounted outside of MRI room. To be use with plastic or aluminum profiles only. To be installed with adhesive or MRI safe hardware only, no factory provided mounting hardware to be used.
<b>Warranty</b>	5 year warranty

### FIXTURE DATA

Model	Efficacy Lm/Wt	Lm/Ft	Wt/Ft
RGB*	46.86	164	3.5

\* Meets Title 24 High efficacy rating.

### LED DATA

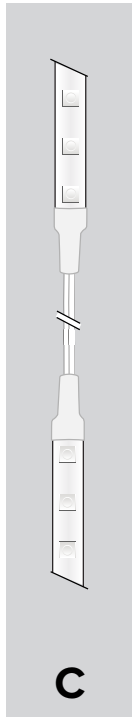
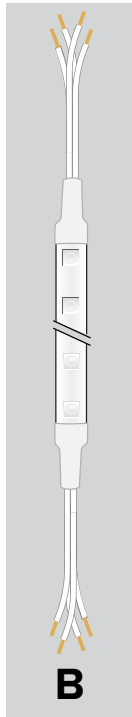
Model	Wt/LED	Viewing Angle	Lifespan at 90% drive
RGB	0.20	120°	40,000hrs

\* LEDs operating at 90% of LED manufacturers maximum current rating.

PRODUCT CODE	INTENSITY	WATTAGE	IP RATING	LED COLOR	VOLTAGE	+	END PREP	+	MOUNTING	+	POWER SUPPLY
--------------	-----------	---------	-----------	-----------	---------	---	----------	---	----------	---	--------------

DL—Duratape™ HO — High Output 35 — 3.5 W/ft O — Outdoor IP66 RGB — Red: 625nm, Green: 520nm Blue: 450nm 24 — 24 VDC

## END PREPS AND CONNECTORS (REQUIRED) - Choose 1



### REQUIRED END PREPS:

(One required for each run of tape)

#### A

##### **07UX3CBL1** (3-circuit RGB)

Factory attached single 3 circuit lead wire prep. 24" four conductor Lead wire/dead end allows for connection to power at lead end and field trim of Duratape product at the other end.

##### **07UX3ADDCBL: ADDITIONAL LEAD WIRE**

(3-circuit RGB)

Additional lead wire purchased per foot and factory attached to specified run leads. Lead wire can be field cut to desired length.

#### B

##### **07UX3CBL2** (3-circuit RGB)

Factory attached double ended 3 circuit lead wire prep. 24" four conductor lead wire at both ends. One end can be used for power connectivity while the other end can be used for interconnection to run to an additional length of Duratape.

##### **07UX3ADDCBL: ADDITIONAL LEAD WIRE**

(3-circuit RGB)

Single 3 circuit lead wire prep. 24" four conductor Lead wire/dead end allows for connection to power at lead end and field trim of Duratape product at the other end.

#### C

##### **07UX3FOLD CBL-XX** (3-circuit RGB)

3 circuit wire fold (specified length). Wire folds are factory attached to Duratape to meet your specified installation requirements. Wire fold lengths available are 2", 3", 4", 6", 12". Add length number to end of part number.

### OPTIONAL CONNECTORS:

#### D

##### **07UX3ADDCON** (3-circuit RGB)

Additional 3 circuit connectors. Lead wire connectors 3/ea per connection.

### PROFILE OPACITY LEVEL KEY:



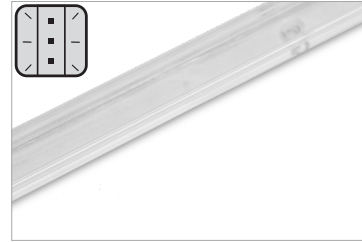
**Uniform**  
Direct View



**Blended**  
Direct / Indirect View



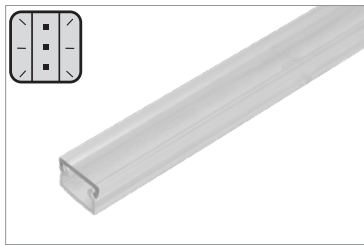
**Pixelated**  
Indirect View



#### DL-MCHAN-8

Linear Mounting profile. Available in 8' lengths.

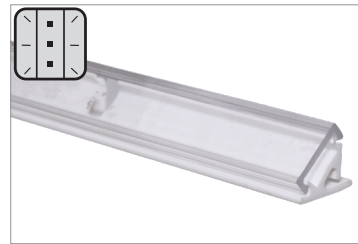
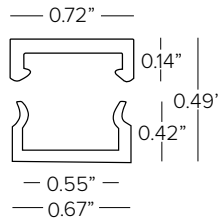
### SURFACE PROFILES



#### DL-W-2PC-C (Clear)

#### DL-W-2PC-F10/F30/F60 (Frosted)

Two-piece mounting tube; base (clear) with cover (frosted) for linear applications. Frosted diffusion levels, 10%, 30% or 60%. Available in 4' lengths.



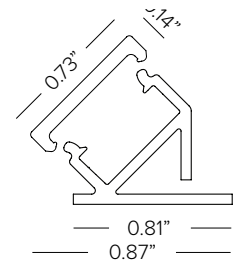
#### DL-C-45-MCH-4 (Base, REQUIRED)

45° mounting base (white) for 45° mounted linear applications. Available in 4' lengths.

#### DL-C-45-CVR-4-C (Cover, Clear)

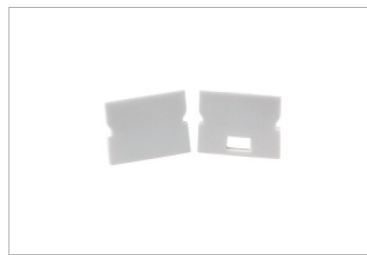
#### DL-C-45-CVR-4-F10/F30/F60 (Cover, Frosted)

45° mounting base cover. Available in 4' lengths.



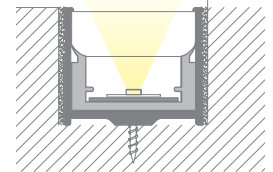
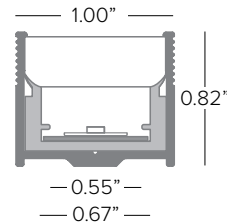
#### PRINTC-G

Rigid high impact resistant PMMA profile complete with a white plastic diffuser lensed channel for recessed walk over installation. Complete with track for easy strip insertion. Available in 3.28ft (1M) lengths.



#### KTPRINTC-G

2+2 PC end caps

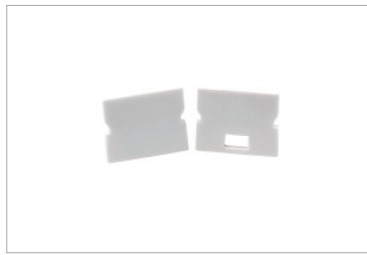


### SURFACE PROFILES CONT.



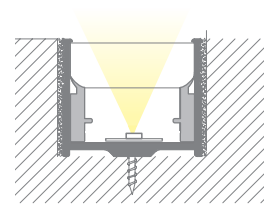
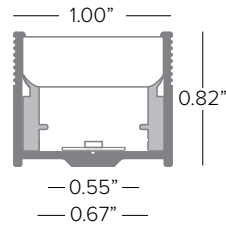
#### PRINTC-GUS

Rigid high impact resistant PMMA profile complete with two part white plastic diffuser lens and aluminum channel for surface or recessed mounting. Available in 3.28ft (1M) lengths.



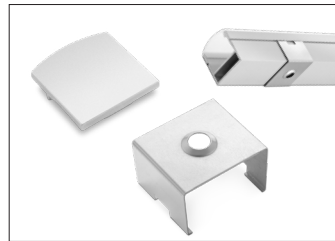
#### KTRPRINTC-G

2+2 PC end caps



#### PRAP-U

Surface mount aluminum profile. Anodized aluminum rigid profile complete with opal translucent diffuser cover. Available in 79in (2M) lengths.



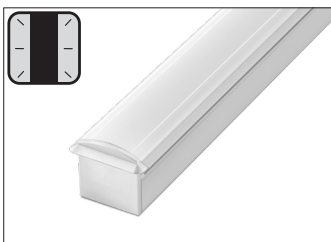
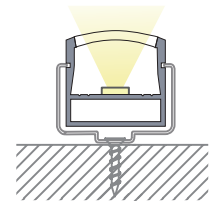
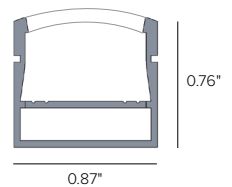
#### KTRPRAP-UEC

5 + 5 silver color end caps



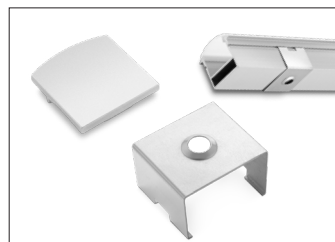
#### OR-DEV

Set of steel supports required with use of KTORDEV-U.



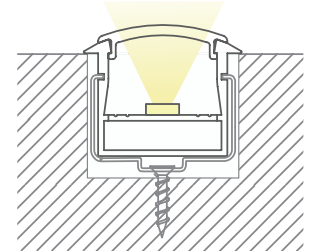
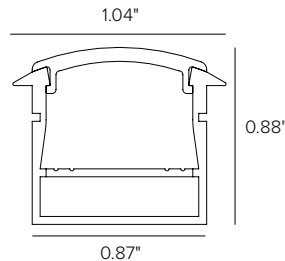
#### PRIN-U

Flush mount aluminum profile. Anodized aluminum rigid profile complete with opal translucent diffuser cover. Available in 79in (2M) lengths.



#### KTRPRIN-UEC

5 + 5 silver color end caps



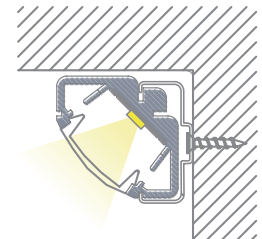
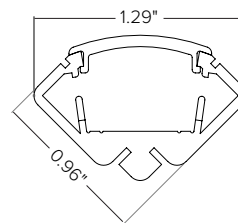
#### PRAN-U

45° aluminum profile. Anodized aluminum rigid profile complete with opal translucent diffuser cover. Available in 79in (2M) lengths.



#### KTRPRAN-UEC

5 + 5 silver color end caps



#### KTRPRAN-UCL

5 sets of clips

Power Supply (REQUIRED)	Type	Wattage	Input/Output Voltage	Dimmable	IP Rating	Output	Dimensions
DEDDX1001243CDMX	ELECTRONIC ADDRESSABLE DMX DRIVER	100W	120-277V / 24V	DMX CONTROL 3 CHANNEL	NEMA3R ENCLOSURE	UL CLASS 2	12" x 12" x 4" <sup>1</sup>
DEDDX2002243CDMX	ELECTRONIC ADDRESSABLE DMX DRIVER	2X100W	120-277V / 24V	DMX CONTROL 3 CHANNEL	NEMA3R ENCLOSURE	UL CLASS 2	12" x 12" x 4" <sup>1</sup>

<sup>1</sup> Dimensions include enclosure with mounting bracket.

\* Constant voltage drivers 50/60HZ, voltage regulated with short circuit protection. Operating temperature -40 C- 80° C

\* Installation of power supply must be compliant to Class 2 installation standards. Refer to NEC and local building code requirements.

### MAXIMUM INTERCONNECTED TAPE LENGTH PER DRIVER

Fixture Wattage	Driver Wattage								
	40W	60W	96W	90W	2X90W	3X90W	100W	2X100	
3.5W/ft	9FT	13FT	21FT	20FT	(2) 20FT	(3) 20FT	22FT	(2) 22FT	

### Controllers:

Part No.	Type	Application	Voltage	Listing	Dimensions	Channels	Zones	Scenes
SWITCH20	RGBW touch DMX512 wall control keypad with sensitive glass touch panel, white finish.	Indoor	12-24V DC	UL	4.7" x 3.0" x 1.2"	12	3	1
TGDMXSLESAU9	Stand-alone DMX 1/2 Universe Programmable Controller with Easy to Use Software Interface	Indoor Only	5.5V DC	ETL, UL	5.3"W x 5.5"H x 1.9D	256	1	20
TGDMXSLESAU11	Nicolaudie Slesa smart DMX interface, 2 DMX 512 universes, intuitive backlit keyboard programmable controller with easy to use software interface.	Indoor	5VDC 120V AC (Plug in power supply included)	ETL	6.3" x 3.6" x 1.8"	1024	5	99
TGDMXSTICKDE3B	Nicolaudie intelligent wall control keypad with glass touch sensitive graphic display, stand-alone DMX 512, 2 universe programmable controller with easy to use software interface. Black finish.	Indoor	6-7V DC 120V AC (Plug in power supply included)	ETL	5.8" x 4.2" x 0.5"	1024	10	500
TGDMXSTICKDE3W	Nicolaudie intelligent control keypad with glass touch sensitive graphic display, stand-alone DMX 512, 2 universe programmable controller with easy to use software interface. White finish.	Indoor	6-7V DC 120V AC (Plug in power supply included)	ETL	5.8" x 4.2" x 0.5"	1024	10	500



SWITCH20



TGDMXSLESAU9



TGDMXSLESAU11



TGDMXSTICKDE3