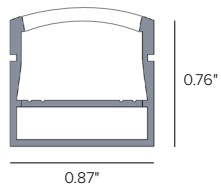


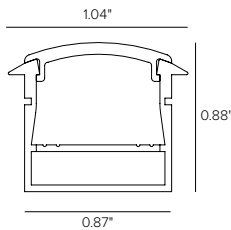
DURATAPE HIGH DENSITY IP20 Indoor
24VDC 7.3W
Product Code: DLHD73I-



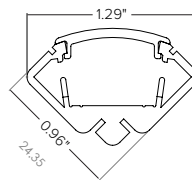
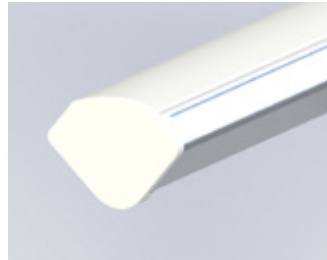
PRAPU Channel



PRINU Channel



PRANU Channel



"IMPORTANT SAFETY INSTRUCTIONS

- Read all instructions.
- Do not conceal or extend exposed conductors through a building wall.
- For low voltage exposed insulated conductor systems, do not install any part of this system less than 7 feet (2.2 m) above the floor (unless installed with Duralamp supplied channel).
- To reduce the risk of fire and burns, do not install this lighting system where the exposed bare conductors can be shorted or contact any conductive materials.
- To reduce the risk of fire and overheating, make sure all connections are tight.
- Do not install any luminaire closer than 6 inches (15.25 cm) from any curtain, or similar combustible materials.
- Turn off electrical power before modifying the lighting system in any way.



Duralamp offers a number of Channel options that can be found on the product specification guides.

Review complete selection to determine which Profile best suits the project installation and illumination requirements.

MOUNTING INSTALLATION

Tape Installation

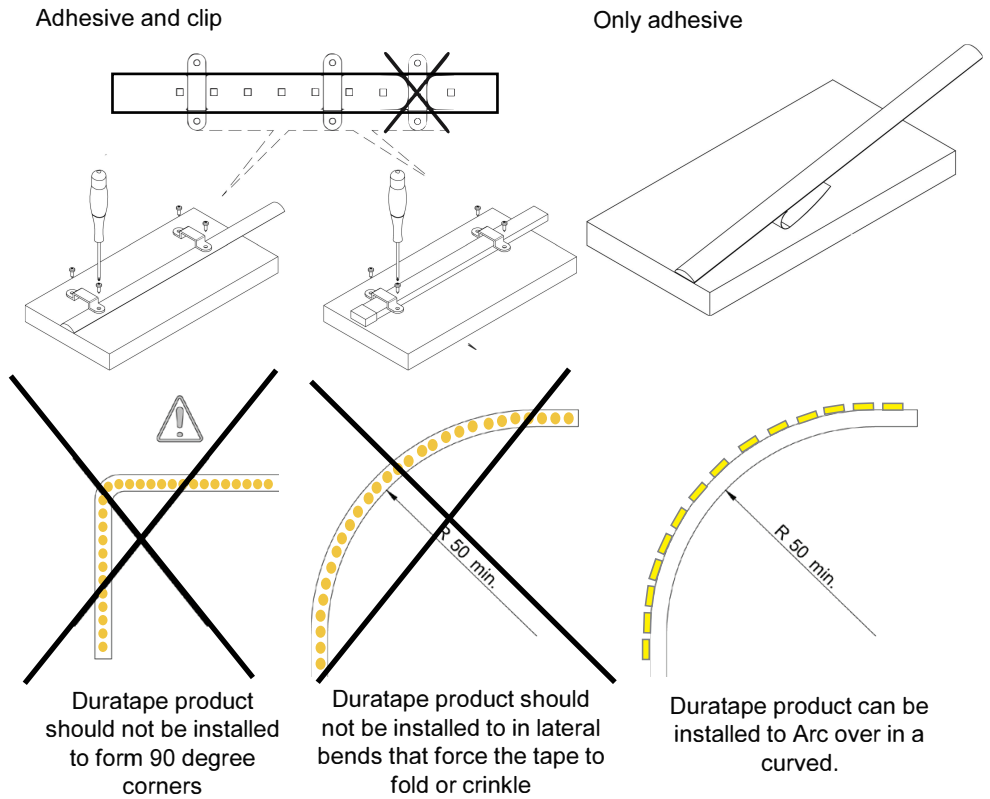
The recommended adhesive for attachment of our Channel to the stone work is to use a weatherproof Substructural Adhesive. For example, Liquid Nails or PL400 or both very good for adhesion to concrete and stone and also the polycarbonate and aluminum mounting channels that we supply.

The channel should be secured into position with a full coverage of the adhesive using blocks inserted into the gap width to allow the adhesive to cure for a minimum of 24 hours.

The Duratape can be attached directly to the channel, but it is necessary to be sure that the Channel surface is clean from dust and debris before attaching.

The Duratape product does have a 3M double sided tape, but we find that it is best to also use a thin bead weatherproof silicone added to the edges and ends when attaching. Again the use of blocks or sticks to secure the Duratape in position onto the channel should be done with 24 hours to cure before removing.

It is recommended that the Duratape is all test powered in position before attaching to be sure that no damage has occurred that will be difficult to repair once the product has cured into the channel.



Channel Installation

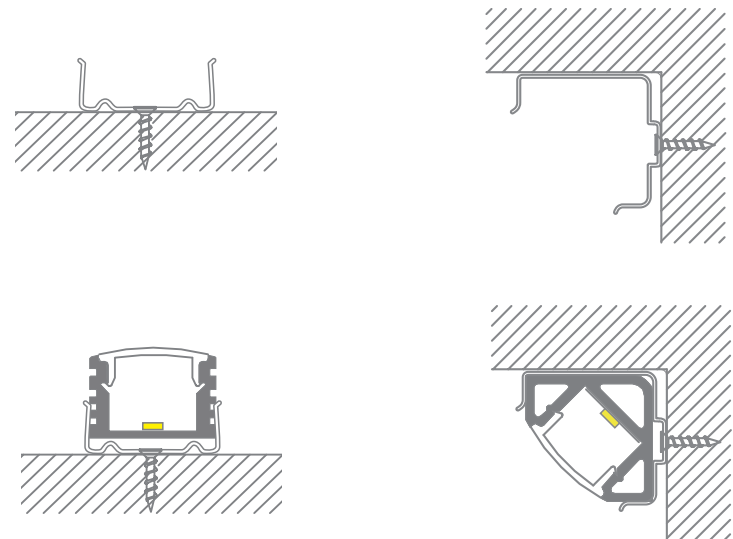
Duratape PRAPU, PRINU, and PRANU all have mounting clips that hold the channel for a secure installation of any surface.

All channels must be installed by a qualified worker that will mount the product compliant to local building code.

Installer will first locate the area of installation and secure the clip onto the mounting surface with the correct mounting screw based on mounting surface. Be sure before securing to align the clips in a straight line before securing the clips on the mounting surface.

Channel Profiles should be cut and mitred if necessary in the field to create a precision cut applicable to the projects requirements.

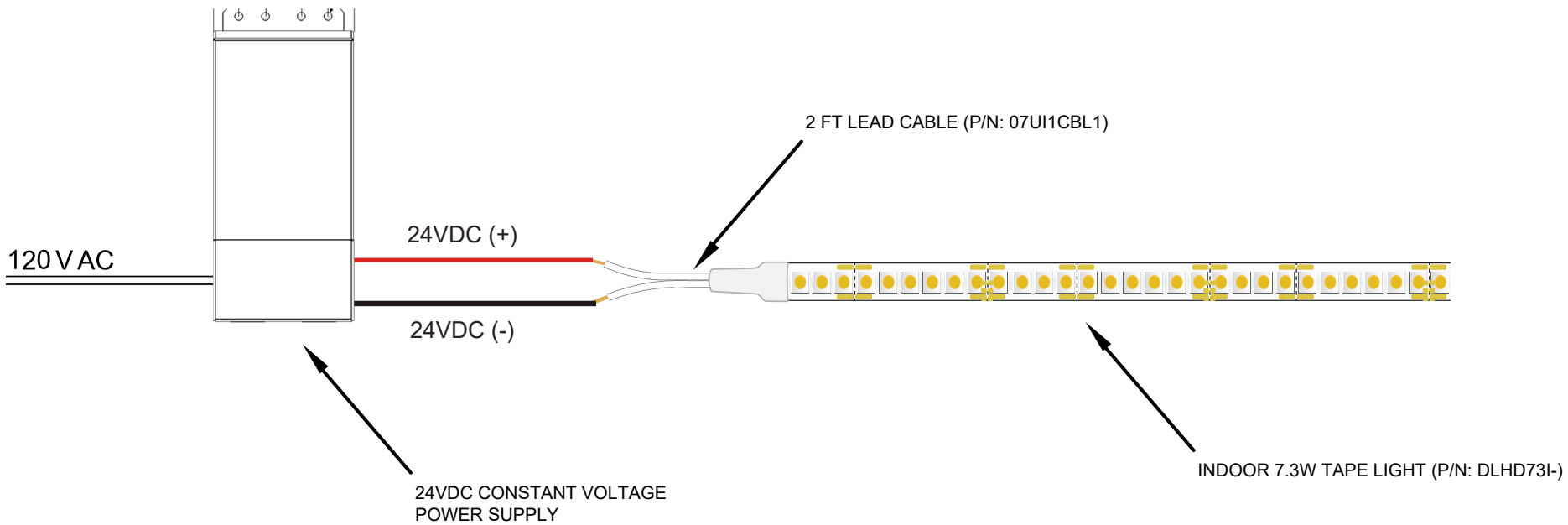
Once the mounting clip is aligned and secured on the mounting surface and channels are finish cut to length, the channel clips onto the mounting clip thus securing the channel into place.



INSTALLATION INSTRUCTIONS

WIRING DIAGRAM

Duralamp offers a number of driver options that can be found on the product specification guides. Review complete selection to determine which Driver best suits the project power circuit and dimming requirements.



MAXIMUM INTERCONNECTED TAPE LENGTH PER DRIVER

Fixture Wattage	Driver Wattage							
	40W	60W	96W	90W	2X90W	3X90W	100W	2X100
7.3W/ft	4FT	6FT	10FT	9FT	(2) 9FT	(3) 9FT	10FT	(2) 10FT