

CCTLed ARCH MINI ADJUSTABLE

4" Professional Adjustable LED Downlight

Concept: Professional small 4" aperture recessed adjustable downlight.

Housing: Non-IC plaster frame and IC/Air tight housings available.

Materials: Painted black die-cast aluminum heat sink with white nylon body.

Trim Accessories: Multiple styles and finishes of matte polycarbonate trims and secondary reflectors available.

Source: High efficiency LED COB.

Optic: Secondary reflector in painted white polycarbonate matte aluminum.

Optical unit complete with removable front ring to insert dedicated optical accessories. SP and FL versions fitted with methacrylate lenses, MWFL and WFL version equipped with precision optics with polished anodized aluminum convex facets.

Mounting: Ultra rapid tool-free mounting system into Targetti recessed housings. Decorative trim ring mounted after fixture installation with twist lock attachment.

Driver: Driver available as Electronic Phase or 0-10V dimmable. Also available with EldoLED 0-10V, Eco (1%) and Solo (0.1%) dimmable drivers

Wattage: 9W / 15W / 20W

Color Temperature: 2700°K / 3000°K / 3500°K / 4000°K

CRI: Ra+90

Lumen Maintenance (L70): 50,000hrs *Calculation for LED fixtures are based on measurements that comply with IES LM-80.*

Voltage: 120-277V AC 50/60Hz, 120V or 277V must be specified for correct thermal protector.

IP Rating: IP20, IP43, (IP54 trim available)

Certifications: cULus Damp Listed E477426

Tested in accordance with LM-79-08

IC/Air tight housing version is Chicago Plenum Rated.

^A Title 24 commercial installation compliant.

^B Title 24 JA8 compliant 9W and 15W versions only, contact factory for available options.

Warranty: 5 year limited warranty



Delivered Lumens:	15W			
	2700°K	3000°K	3500°K	4000°K
Spot 15°	= 864Lm	908Lm	800Lm	1089Lm
Flood 30°	= 974Lm	1017Lm	1169Lm	1171Lm
Medium Wide Flood 45°	= 1126Lm	1175Lm	1351Lm	1354Lm
Wide Flood 60°	= 1092Lm	1139Lm	1310Lm	1313Lm

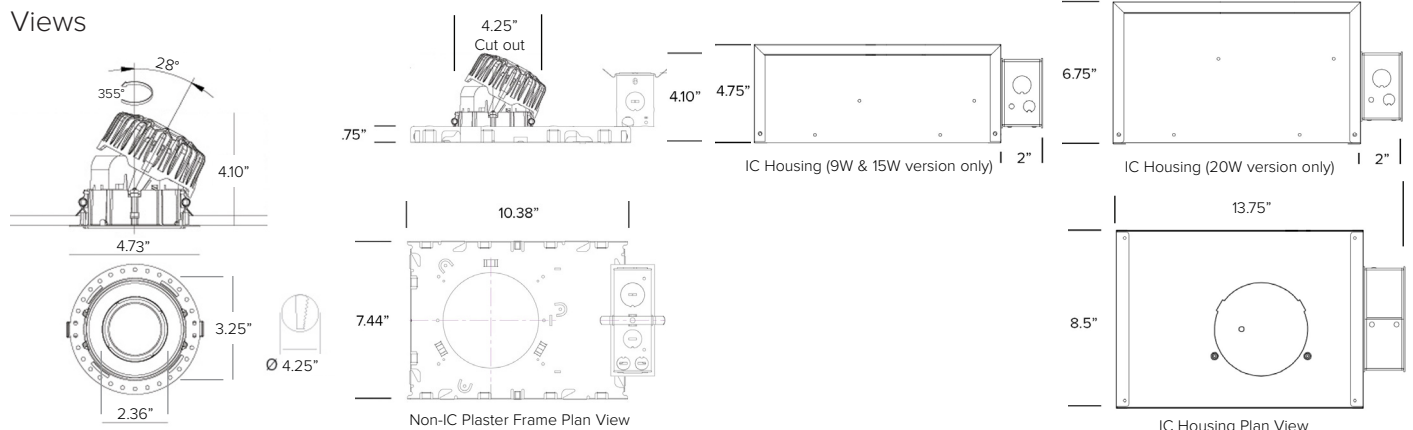
Refer to pages 6–8 for complete fixture data.

PRODUCT CODE	OPTICS	WATTAGE	COLOR TEMP	+	HOUSING	DRIVER	VOLTAGE	+	TRIM & REFLECTOR
CCMA CCTLed ARCH MINI ADJUSTABLE	SP — Spot 15° w/diffusion lens	L1 — 9W	27 — 2700K	NC — Non-IC Plaster Frame IC ¹ — IC/Air Tight Housing	EP ² — Electronic Phase Dimmable	1 — 120	Required (See Pg 2 & 3)		
		L2 — 15W	30 — 3000K						
	FL — Flood 30° w/diffusion lens	L1 — 9W	35 — 3500K		E1 — Eldo 1%				
		MF — Medium Wide Flood 46°	L2 — 15W			40 — 4000K		E0 — Eldo 0.1%	
			L3 — 20W						
	WF — Wide Flood 60°	L2 — 15W			¹ IC/Air tight housing suitable for Chicago Plenum rated installation.	² Electronic phase dimmable available for 120V only. * Lutron 1% ECO system driver available upon request.			
L3 — 20W									

¹ IC/Air tight housing suitable for Chicago Plenum rated installation.

² Electronic phase dimmable available for 120V only.
* Lutron 1% ECO system driver available upon request.

Views



CCTLed ARCH MINI ADJUSTABLE

Trim (REQUIRED) - PICK ONE

ROUND TRIM	
Diameter Ø4.9".	
1T4696	Plaster White Finish
1T4697	Deep Plack Finish
1T4696SI	Silver Finish
1T4696FE	Ferrite Finish
1T4696CO	Copper Finish
1T4696GO	Gold Finish
1T4696PG	Pink Gold Finish
1T4696HB	Heritage Brown Finish

PINHOLE TRIM	
For adjustable version. We recommend in combination with the black secondary reflector. Diameter Ø4.9".	
1T4702	Plaster White Finish
1T4703	Deep Black Finish
1T4702SI	Silver Finish
1T4702FE	Ferrite Finish
1T4702CO	Copper Finish
1T4702GO	Gold Finish
1T4702PG	Pink Gold Finish
1T4702HB	Heritage Brown Finish

SQUARE / SQUARE TRIM	
Squared ring with squared hole. For adjustable version. Dimension 4.9"x4.9".	
1T4714	Plaster White Finish
1T4716	Plaster White Finish / Gray Finish Inside
1T4717	Plaster White Finish / Deep Black Finish Inside
1T4718	Plaster White Finish / Copper Finish Inside
1T4719	Plaster White Finish / Gold Finish Inside
1T4715	Deep Black Finish
1T4720	Deep Black Finish / Gold Finish Inside
1T6399	Silver Finish
1T5932	Ferrite Finish
1T5934	Copper Finish
1T5933	Gold Finish
1T6400	Pink Gold Finish
1T5931	Heritage Brown Finish

SQUARE / ROUND TRIM	
Dimension 4.9"x4.9".	
1T4698	Plaster White Finish
1T4699	Deep Plack Finish
1T4698SI	Silver Finish
1T4698FE	Ferrite Finish
1T4698CO	Copper Finish
1T4698GO	Gold Finish
1T4698PG	Pink Gold Finish
1T4698HB	Heritage Brown Finish

IP54 ROUND TRIM	
Diameter Ø4.9".	
1T4704	Plaster White Finish
1T4705	Deep Plack Finish
1T4704SI	Silver Finish
1T4704FE	Ferrite Finish
1T4704CO	Copper Finish
1T4704GO	Gold Finish
1T4704PG	Pink Gold Finish
1T4704HB	Heritage Brown Finish



Round Trim



Square / Round Trim



Pinhole Trim



Round IP54 Trim



Square / Square Trim



Consult Factory

TRIMLESS CONCAVE PLASTER RING

Consult Factory	Plaster ring for trimless concave effect. Cutout Ø14.45". To be completed with one round trim ring listed above.
------------------------	---

CCTLed ARCH MINI ADJUSTABLE

Secondary Reflector (REQUIRED) - PICK ONE

* Factory Installed	
1T4710	Secondary reflector white finish. For adjustable version.
1T4711	Secondary reflector black finish. For adjustable version.
1T4712	Secondary reflector copper finish. For adjustable version.
1T4713	Secondary reflector gold finish. For adjustable version.
1T6397	Secondary reflector silver finish. For adjustable version.
1T5929	Secondary reflector ferrite finish. For adjustable version.
1T6398	Secondary reflector pink gold finish. For adjustable version.
1T5930	Secondary reflector heritage brown finish. For adjustable version.



Secondary Reflector

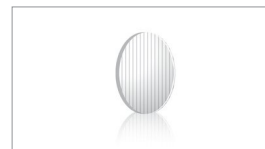
OPTICAL ACCESSORIES	
49881	Chromatic filter Red. Glass made, with dichroic treatment. Diameter 2".
49882	Chromatic filter Green. Glass made, with dichroic treatment. Diameter 2".
49886	Chromatic filter Blue. Glass made, with dichroic treatment. Diameter 2".
49887	Chromatic filter Yellow. Glass made, with dichroic treatment. Diameter 2".
49959	Chromatic filter Magenta. Glass made, with dichroic treatment. Diameter 2".
1T1745	Chromatic filter Cold tone. Interference glass filter to vary the colour temperature of light. Diameter 2".
1T1748	Chromatic filter Gold tone. Interference glass filter to vary the colour temperature of light. Diameter 2".
1T1751	Chromatic filter Peach tone. Interference glass filter to vary the colour temperature of light. Diameter 2".
1T4721	Parallel ribbed glass light blade filter. This makes the beam take on an oval shape, more evident when combined with spot and flood optics. Diameter 2".
1T4322	Anti-glare grid. Black lacquered metal honeycomb structure. Diameter 2".
1T4324	Zoom optical system consists of flat convex lens in optical glass, specular reflector in anodized aluminium and diffusive holographic filter. To be used after removing the existing optic. It allows to obtain a variable beam from 15° to 60°. Diameter 2".



Chromatic Filter



Tone Filter



1T4721



1T4322



1T4324

COLOURS

ELEGANT MATTE:

Impalpable, "powdery" pastel colours with timeless traditional black and white, with a smooth yet matt finish for a refined modern effect.



PLASTER WHITE



DEEP BLACK



ROSE

ELEGANT BRILLIANT:

Fresh, vibrant and elegant colours. The brilliant finish creates shades to coordinate with elegant and sophisticated architecture fearlessly.



SILVER



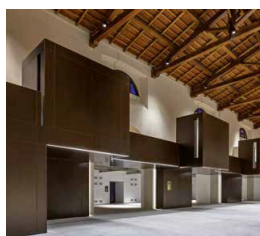
GOLD



PINK GOLD

NATURE BRILLANT:

A textural, instinctive colour palette that recalls nature and the earth. Warm, metallic, precious colours with a brilliant, silky finish.



COPPER



FERRITE



HERITAGE BROWN

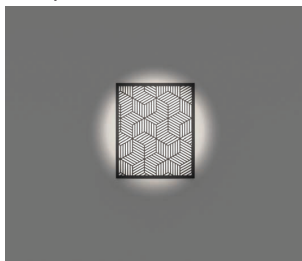
CCTLed ARCH MINI ADJUSTABLE



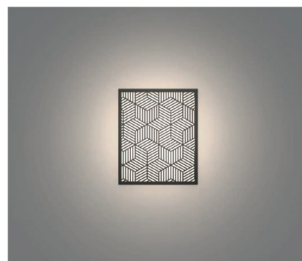
OPTICAL SYSTEM

The optical system is the heart of every lighting fixture and its role is to adapt to the lamp, control emission and create the light beam. Every optical system is different, calibrated by a specific lamp to maximise performance and designed to interpret a lighting task to the full. Following rapid developments in LED lamps and new technology associated with them it is now more important than ever to look for new solutions, geometry and materials. Given the importance and specificity of this function Targetti has an internal design department dedicated to constantly creating and evolving its optical systems. Extremely innovative proprietary systems that are very different to each other, often protected by patents are developed with careful attention to the precision of the light beams and the best efficiency possible.

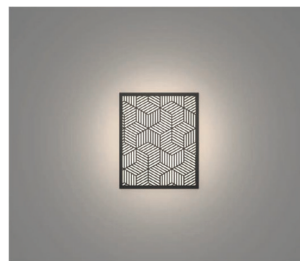
example



LENTICULAR OPTIC - SPOT



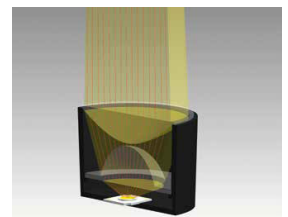
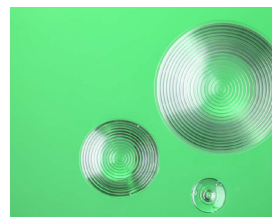
HYBRID OPTIC - SPOT



REFLECTOR OPTIC - SPOT

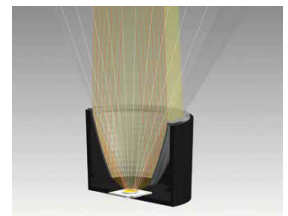
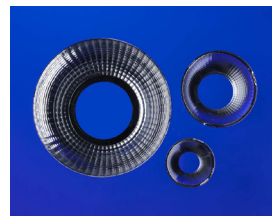
LENTICULAR

These are the most sophisticated. Small in size with very high quality materials and particular shapes. They are used widely in museums to obtain perfect and defined light beams. From a technical point of view it is said that they allow to collimate the beams and to “cut” all the indirect emission components. Generally they are used to create more precise beams where both performance and precision are essential requirements. Optics made with different lens geometries and materials depending on the type of LED lamp, whether a single or linear module, range from plano-convex optical glass from the best Italian tradition, to Fresnel lenses printed in noble plastic materials or innovative transparent cylindrical rods.



FACETED

They ensure the best performance in terms of energy saving and come in all beam openings – from the narrowest to the widest – and allow for perfect mixing with soft wide tones between light and shade. These characteristics make them more suitable for retail and hospitality environments. They are made from high vacuum metallized plastic protected with a Scratch Proof Formula or from polished anodized pure aluminum. Their high reflectance always ensures high optical efficiency. Profiles designed with the best simulation software with ellipsoidal convex facets generate various beam angles with an optimal light mix. A precise and enveloping light at the same time.



CCTLed ARCH MINI ADJUSTABLE

Photometry

SPOT					POLAR GRAPH	CONE OF LIGHT				
Fixture Power	9W					(Ft)	Alpha=7.6°=7.6°		Max	Med
Fixture Output	587Lm	616Lm	547Lm	739Lm			G=0.0°		ftcd	ftcd
Kelvin Temp	2700°K	3000°K	3500°K	4000°K		2.00			1860	1222
Beam Spread	SP 15°	SP 15°	SP 15°	SP 15°		4.00			465	306
I _{Max}	9472cd/klm	9472cd/klm	9472cd/klm	9472cd/klm		6.00			207	136
Efficacy	65 Lm/W	68 Lm/W	61 Lm/W	82 Lm/W		8.00			116	76
						10.00			74	49

FLOOD					POLAR GRAPH	CONE OF LIGHT				
Fixture Power	9W					(Ft)	Alpha=14.9°=14.9°		Max	Med
Fixture Output	644Lm	672Lm	773Lm	775Lm			G=0.0°		ftcd	ftcd
Kelvin Temp	2700°K	3000°K	3500°K	4000°K		2.00			591	377
Beam Spread	FL 30°	FL 30°	FL 30°	FL 30°		4.00			148	94
I _{Max}	2627cd/klm	2627cd/klm	2627cd/klm	2627cd/klm		6.00			66	42
Efficacy	72 Lm/W	75 Lm/W	86 Lm/W	86 Lm/W		8.00			37	24
						10.00			24	15

MEDIUM WIDE FLOOD					POLAR GRAPH	CONE OF LIGHT				
Fixture Power	9W					(Ft)	Alpha=24.2°=24.2°		Max	Med
Fixture Output	744Lm	777Lm	894Lm	895Lm			G=0.0° Max not at G		ftcd	ftcd
Kelvin Temp	2700°K	3000°K	3500°K	4000°K		2.00			303	182
Beam Spread	MFL 45°	MFL 45°	MFL 45°	MFL 45°		4.00			76	45
I _{Max}	1372cd/klm	1372cd/klm	1372cd/klm	1372cd/klm		6.00			34	20
Efficacy	83 Lm/W	86 Lm/W	99 Lm/W	99 Lm/W		8.00			19	11
						10.00			12	7

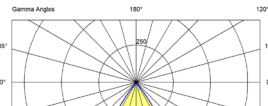
CCTLed ARCH MINI ADJUSTABLE

Photometry Cont.

SPOT					POLAR GRAPH	CONE OF LIGHT				
Fixture Power	15W					(Ft)			Max	Med
Fixture Output	864Lm	908Lm	800Lm	1089Lm		2.00			ftcd	ftcd
Kelvin Temp	2700°K	3000°K	3500°K	4000°K		4.00			2738	1800
Beam Spread	SP 15°	SP 15°	SP 15°	SP 15°		6.00			685	450
IMax	9472cd/klm	9472cd/klm	9472cd/klm	9472cd/klm		8.00			304	200
Efficacy	58 Lm/W	61 Lm/W	53 Lm/W	73 Lm/W		10.00			110	72

FLOOD					POLAR GRAPH	CONE OF LIGHT				
Fixture Power	15W									

MEDIUM WIDE FLOOD					POLAR GRAPH	CONE OF LIGHT			
Fixture Power	15W								

WIDE FLOOD					POLAR GRAPH	CONE OF LIGHT					
Fixture Power	15W					(Ft)	Alpha=30.0° x 30.0°	G=0.0° Max not at G	Beta=30.0° x 30.0°	Max	Med
Fixture Output	1092Lm	1139Lm	1310Lm	1313Lm		2.00				ftcd	ftcd
Kelvin Temp	2700°K	3000°K	3500°K	4000°K		4.00				332	182
Beam Spread	WFL	WFL	WFL	WFL		6.00				83	46
IMax	976cd/klm	976cd/klm	976cd/klm	976cd/klm		8.00				37	20
Efficacy	73 Lm/W	76 Lm/W	87 Lm/W	88 Lm/W		10.00				21	11

CCTLed ARCH MINI ADJUSTABLE

Photometry Cont.

FLOOD					POLAR GRAPH	CONE OF LIGHT			
Fixture Power	20W								
Fixture Output	1304Lm	1361Lm	1566Lm	1569Lm					
Kelvin Temp	2700°K	3000°K	3500°K	4000°K					
Beam Spread	FL 30°	FL 30°	FL 30°	FL 30°					
IMax	2627cd/klm	2627cd/klm	2627cd/klm	2627cd/klm					
Efficacy	65 Lm/W	68 Lm/W	78 Lm/W	79 Lm/W					

MEDIUM WIDE FLOOD					POLAR GRAPH	CONE OF LIGHT			
Fixture Power	20W								
Fixture Output	1507Lm	1573Lm	1810Lm	1813Lm					
Kelvin Temp	2700°K	3000°K	3500°K	4000°K					
Beam Spread	MFL 45°	MFL 45°	MFL 45°	MFL 45°					
IMax	1372cd/klm	1372cd/klm	1372cd/klm	1372cd/klm					
Efficacy	75 Lm/W	79 Lm/W	91 Lm/W	91 Lm/W					

WIDE FLOOD					POLAR GRAPH	CONE OF LIGHT			
Fixture Power	20W								
Fixture Output	1461Lm	1525Lm	1755Lm	1758Lm					
Kelvin Temp	2700°K	3000°K	3500°K	4000°K					
Beam Spread	MFL 60°	MFL 60°	MFL 60°	MFL 60°					
IMax	976cd/klm	976cd/klm	976cd/klm	976cd/klm					
Efficacy	73 Lm/W	76 Lm/W	88 Lm/W	88 Lm/W					