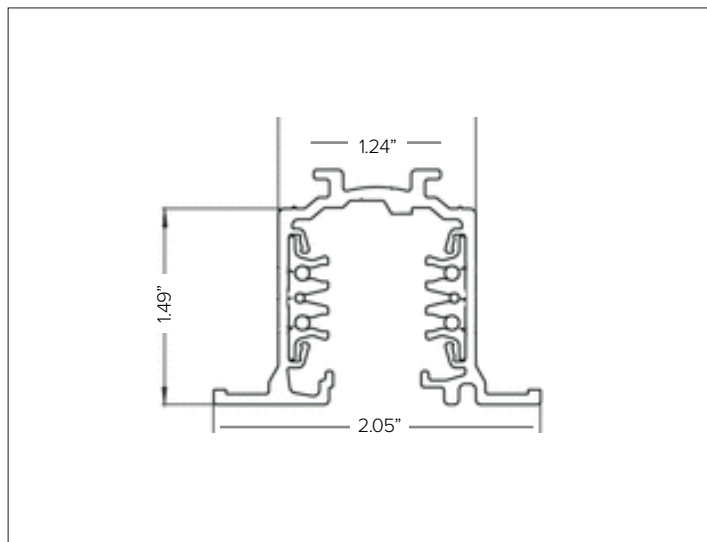
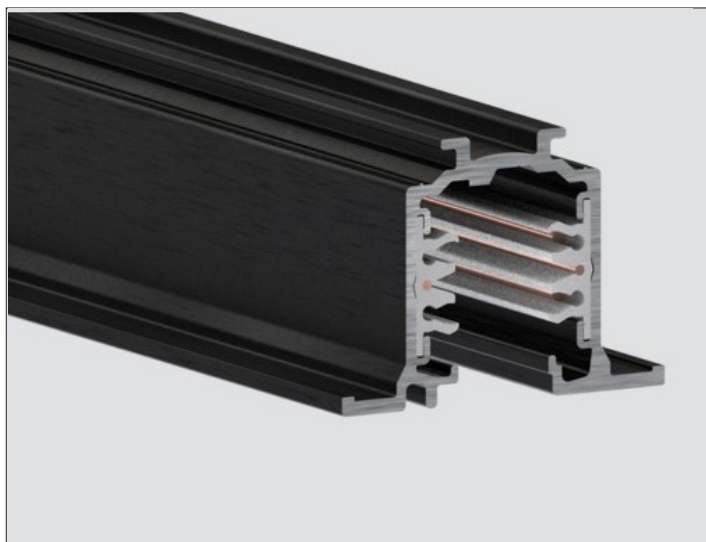


EUROSTANDARD PLUS TRACK - RECESSED



CONCEPT

Recessed trimless electrified track system.

MECHANICAL CHARACTERISTICS

Dimensions 3.62"W X 1.69"H

Materials Aluminum track with copper conductors that feed electricity to the fixture and provide attachment support.

Finish White Black

Power Connection Mechanical electrical polarized connections. For current limiting solutions, 3rd party current limiter breaker panel to be supplied by others.

Functionality Different mounting configurations are achievable using electrical feeds and connectors that make it possible to build a simple or complex systems.

Mounting To be installed in surface or suspension configurations that is achieved through different available mounting options.

Weight 0.75lbs/ft

Protection IP20

ELECTRICAL CHARACTERISTICS

Voltage 120V/60Hz

Circuit 3-circuit, 4+2 conductor

Frequency 60Hz

Control 0-10V Dimming

CERTIFICATIONS

cULus Listed.
RoHS3 EU 215/863

WARRANTY

5 year limited warranty.

EUROSTANDARD PLUS TRACK - RECESSED

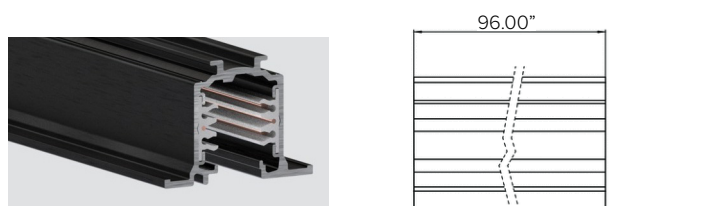
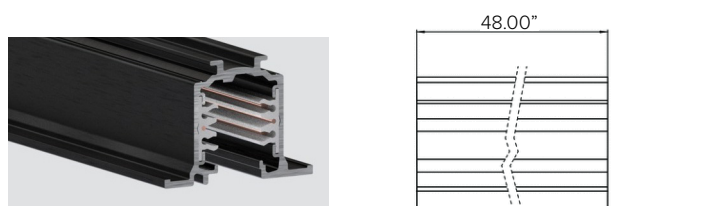
SPECIFICATION INFORMATION



Ex: 9000-UL4/W-R-120 / 9004-R/W / S-9000/T / 9000-KIT8-5-B / 9001/B-3C / S-9001-R/6-B-UL

1 - TRACK	2 - END CAP	3 - DECORATIVE COVER	4 - CUTTING TOOL	8 - MOUNTING	9 - IN ROW MOUNTING
REQUIRED	REQUIRED	OPTIONAL	REQUIRED	REQUIRED	OPTIONAL
5 - ELECTRICAL FEED	6 - ELECTRICAL CONNECTOR	7 - FEED HOUSING			
REQUIRED	OPTIONAL	REQUIRED			

1 - TRACK (REQUIRED)



STUCCHI EUROSTANDARD PLUS recessed track with flange, field cuttable with specialized tool (REQUIRED).

STUCCHI EUROSTANDARD PLUS recessed track with flange, field cuttable with specialized tool (REQUIRED).

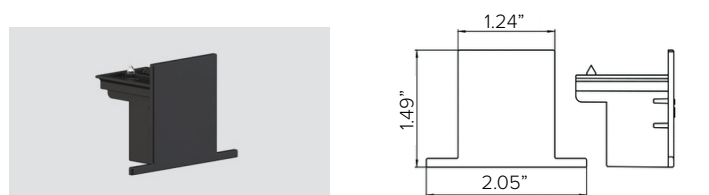
Finish White Black

Finish White Black

Part No. **9000-UL4/W-R-120** **9000-UL4/B-R-120**

Part No. **9000-UL8/W-R-120** **9000-UL8/B-R-120**

2 - END CAP (REQUIRED)

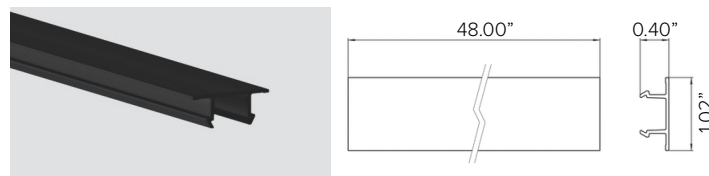


STUCCHI EUROSTANDARD PLUS recessed track end cap kit, 5pcs.

Finish White Black

Part No. **9004-R/W** **9004-R/B**

3 - DECORATIVE COVER (OPTIONAL)



STUCCHI EUROSTANDARD PLUS decorative track cover strip, 10pcs.

Finish White Black

Part No. **S-9000/GP-W-UL4** **S-9000/GP-B-UL4**

4 - CUTTING TOOL (REQUIRED)



Cutting tool for track conductors.

S-9000/T

EUROSTANDARD PLUS TRACK - RECESSED

5 – MOUNTING (REQUIRED)



STUCCHI EUROSTANDARD PLUS structural support kit, 1pc. Includes bracket with automatic gripper and cable. Round head ceiling attachment with steel cable (Ø 0.06in X 16ft L), spherical end and short pendant bracket with countersink hole. REQUIRED by NEC to secure to main structure of the building, to be used with wood or concrete installations. Suggested 2pcs for 4ft L track, 3pcs for 8ft L track.

Finish White Black

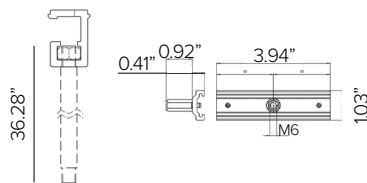
Part No. **9000-KIT8-5-W** **9000-KIT8-5-B**

STUCCHI EUROSTANDARD PLUS suspension kit, bracket with automatic gripper. Screw gripper with finished plastic cup and steel cable (Ø 0.06in X 16ft L). REQUIRED by NEC to secure to main structure of the building, to be used with open truss installations. Suggested 2pcs for 4ft L track, 3pcs for 8ft L track.

Finish White Black

Part No. **9000-KIT3-5-W** **9000-KIT3-5-B**

6 – IN ROW MOUNTING (OPTIONAL)



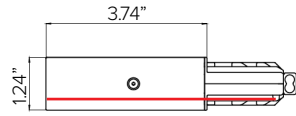
STUCCHI EUROSTANDARD PLUS in row structural support kit with threaded rod and track support bracket, 1pc. REQUIRED for use when two tracks intersect to create an interconnected track.

Finish Black

Part No. **S-9000-UL/322-M6-B**

EUROSTANDARD PLUS TRACK - RECESSED

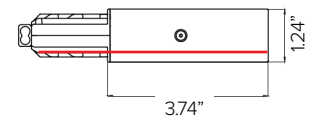
7 - ELECTRICAL FEED (REQUIRED)



STUCCHI EUROSTANDARD PLUS end feed polarity right/ground left.

Finish White Black

Part No. **9001/W-3C** **9001/B-3C**



STUCCHI EUROSTANDARD PLUS end feed polarity left/ground right.

Finish White Black

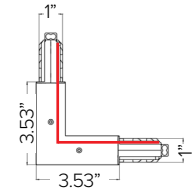
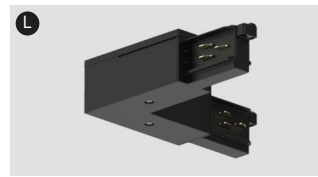
Part No. **9002/W-3C** **9002/B-3C**



STUCCHI EUROSTANDARD PLUS linear middle feed with ground.

Finish White Black

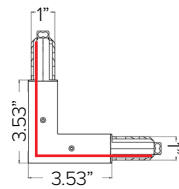
Part No. **9010/W-3C** **9010/B-3C**



STUCCHI EUROSTANDARD PLUS L – Feed polarity internal/ground external.

Finish White Black

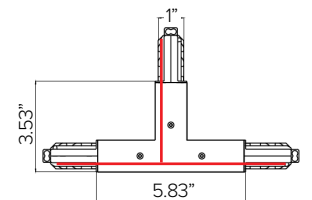
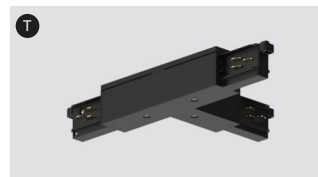
Part No. **9011/W-3C** **9011/B-3C**



STUCCHI EUROSTANDARD PLUS L – Feed polarity external/ground internal.

Finish White Black

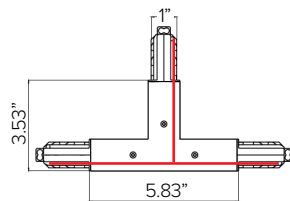
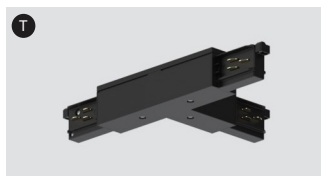
Part No. **9012/W-3C** **9012/B-3C**



STUCCHI EUROSTANDARD PLUS T – Feed polarity external left/ground internal right.

Finish White Black

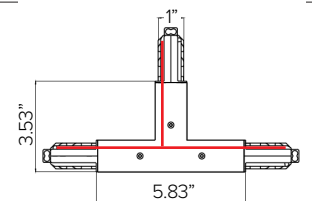
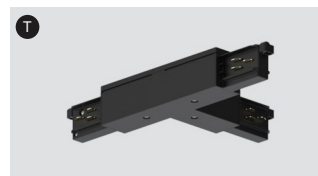
Part No. **9013/W-3C** **9013/B-3C**



STUCCHI EUROSTANDARD PLUS T – Feed polarity external right/ground internal left.

Finish White Black

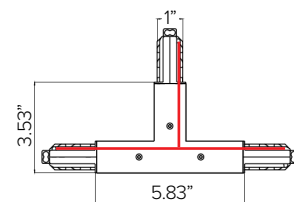
Part No. **9014/W-3C** **9014/B-3C**



STUCCHI EUROSTANDARD PLUS T – Feed polarity internal left/ground external right.

Finish White Black

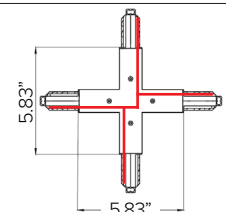
Part No. **9015/W-3C** **9015/B-3C**



STUCCHI EUROSTANDARD PLUS T – Feed polarity internal right/ground external right.

Finish White Black

Part No. **9016/W-3C** **9016/B-3C**



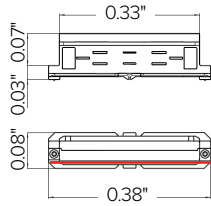
STUCCHI EUROSTANDARD PLUS X – Feed.

Finish White Black

Part No. **9017/W-3C** **9017/B-3C**

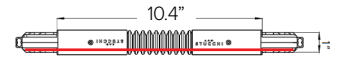
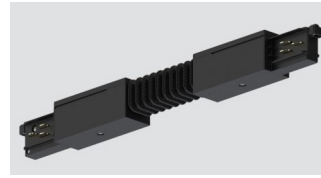
EUROSTANDARD PLUS TRACK - RECESSED

8 - ELECTRICAL CONNECTOR (OPTIONAL)



STUCCHI EUROSTANDARD PLUS linear joint connector.

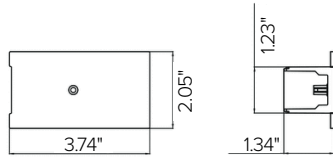
Finish White Black
 Part No. **9003/W** **9003/B**



STUCCHI EUROSTANDARD PLUS adjustable corner connector.

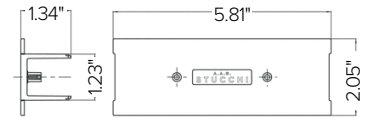
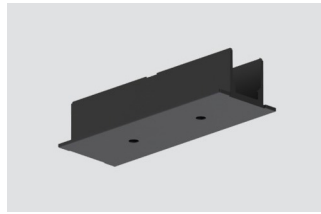
Finish White Black
 Part No. **9018/W-3C** **9018/B-3C**

9 - ELECTRICAL FEED HOUSING (REQUIRED)



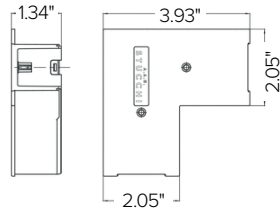
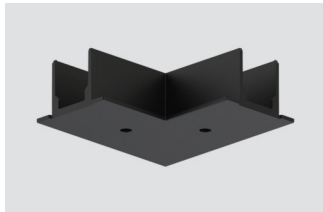
STUCCHI EUROSTANDARD PLUS Recessed track end feed cover.

Finish White Black
 Part No. **S-9001-R/6-W-UL** **S-9001-R/6-B-UL**



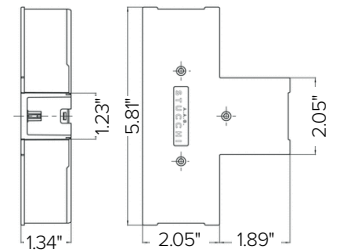
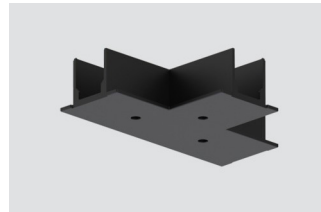
STUCCHI EUROSTANDARD PLUS Recessed track middle feed cover.

Finish White Black
 Part No. **S-9010-R/6-W** **S-9010-R/6-B**



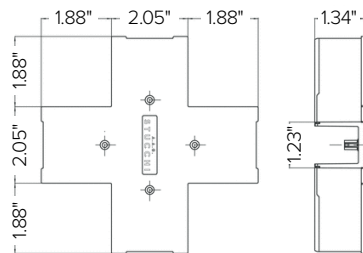
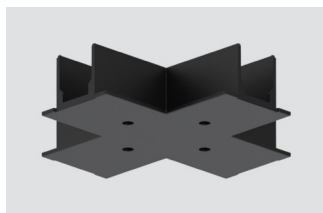
STUCCHI EUROSTANDARD PLUS Recessed track L-feed cover.

Finish White Black
 Part No. **S-9011-R/6-W** **S-9011-R/6-B**



STUCCHI EUROSTANDARD PLUS Recessed track T-feed cover.

Finish White Black
 Part No. **S-9013-R/6-W** **S-9013-R/6-B**



STUCCHI EUROSTANDARD PLUS Recessed track X-feed cover.

Finish White Black
 Part No. **S-9017-R/6-W** **S-9017-R/6-B**