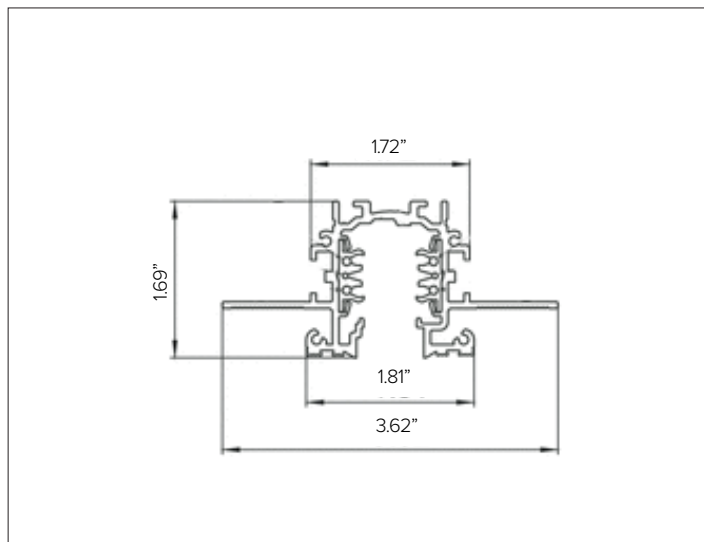


EUROSTANDARD PLUS TRACK - RECESSED TRIMLESS



CONCEPT

Recessed trimless electrified track system.

MECHANICAL CHARACTERISTICS

Dimensions 3.62"W X 1.69"H

Materials Aluminum track with copper conductors that feed electricity to the fixture and provide attachment support.

Finish White Black

Power Connection Mechanical electrical polarized connections. For current limiting solutions, 3rd party current limiter breaker panel to be supplied by others.

Functionality Different mounting configurations are achievable using electrical feeds and connectors that make it possible to build a simple or complex systems.

Mounting To be installed in recessed trimless mud in configurations. Support suspensions to be used with track to secure to main construction of the building per NEC requirements. For use in non airtight plenum applications.

Weight 1lbs/ft

Protection IP20

ELECTRICAL CHARACTERISTICS

Voltage 120V/60Hz

Circuit 3-circuit, 4+2 conductor

Frequency 60Hz

Control 0-10V Dimming

CERTIFICATIONS

cULus Listed.
RoHS3 EU 215/863

WARRANTY

5 year limited warranty.

EUROSTANDARD PLUS TRACK - RECESSED TRIMLESS

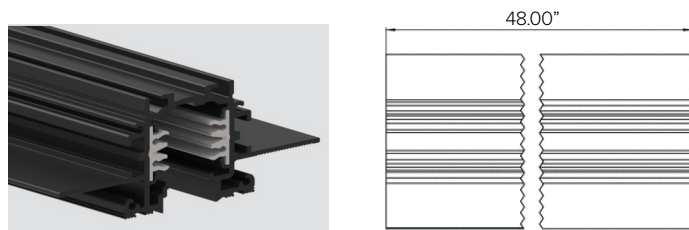
SPECIFICATION INFORMATION



Ex: 9000-UL4/B-TR1-120 / 9004/TR-B / 9004/TRL-B / S-9000/TR1 / S-9000-UL/322-M6-B / 9001/B-3C / S-9001/TR-B

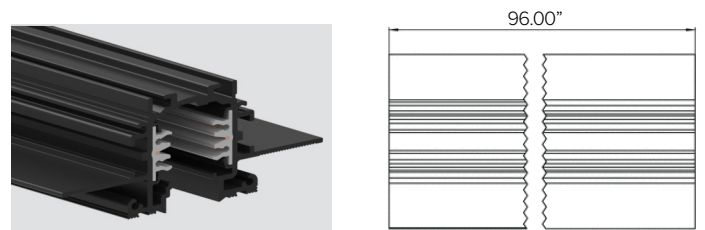
1 - TRACK	2 - END CAP	3 - END CAP FLANGE	4 - CUTTING TOOL	5 - MECHANICAL JOINT CONNECTOR	6 - MOUNTING
REQUIRED	REQUIRED	REQUIRED	REQUIRED	OPTIONAL	REQUIRED
7 - ELECTRICAL FEED	8 - FEED HOUSING	9 - ELECTRICAL CONNECTOR			
REQUIRED	REQUIRED	OPTIONAL			

1 - TRACK (REQUIRED)



STUCCHI EUROSTANDARD PLUS recessed trimless, field cuttable with specialized tool (REQUIRED).

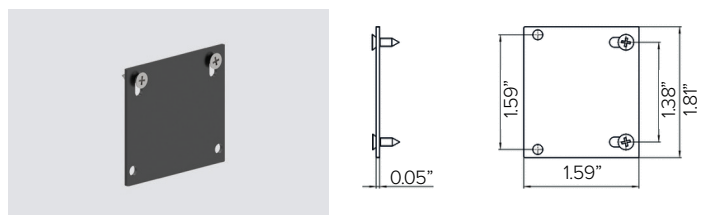
Finish	<input type="radio"/> White	<input checked="" type="radio"/> Black
Part No.	9000-UL4/W-TR1-120	9000-UL4/B-TR1-120



STUCCHI EUROSTANDARD PLUS recessed trimless, field cuttable with specialized tool (REQUIRED).

Finish	<input type="radio"/> White	<input checked="" type="radio"/> Black
Part No.	9000-UL8/W-TR1-120	9000-UL8/B-TR1-120

2 - END CAP (REQUIRED)



STUCCHI EUROSTANDARD PLUS recessed trimless end cap kit with locking screws, 1pc.

Finish	<input type="radio"/> White	<input checked="" type="radio"/> Black
Part No.	9004/TR-W	9004/TR-B

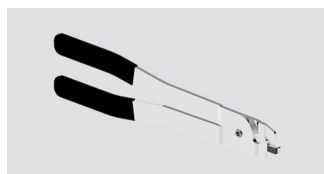
3 - END CAP FLANGE (REQUIRED)



STUCCHI EUROSTANDARD PLUS recessed trimless end cap flange kit with locking screws, 1pc.

Finish	<input type="radio"/> White	<input checked="" type="radio"/> Black
Part No.	9004/TRL-W	9004/TRL-B

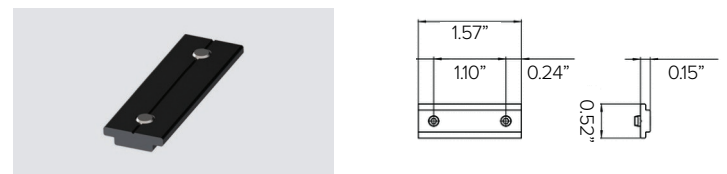
4 - CUTTING TOOL (REQUIRED)



Cutting tool for track conductors.

Part No.	S-9000/T-TR1
----------	---------------------

5 - MECHANICAL JOINT CONNECTOR (OPTIONAL)

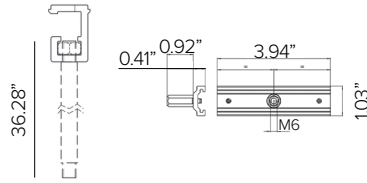


STUCCHI EUROSTANDARD PLUS mechanical joint connector, 2pcs. REQUIRED for use with interconnected lengths track lengths when two tracks intersect.

Finish	<input checked="" type="radio"/> Black
Part No.	S-9500/314-B

EUROSTANDARD PLUS TRACK - RECESSED TRIMLESS

6 – MOUNTING (REQUIRED)

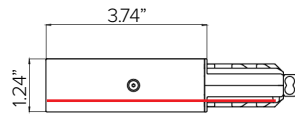
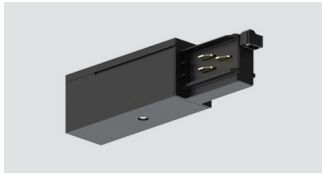


STUCCHI EUROSTANDARD PLUS structural support kit with threaded rod and track support bracket, 1pc. REQUIRED by NEC to secure to main structure of the building.

Finish Black

Part No. **S-9000-UL/322-M6-B**

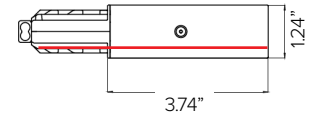
7 - ELECTRICAL FEED (REQUIRED)



STUCCHI EUROSTANDARD PLUS end feed polarity right/ground left.

Finish White Black

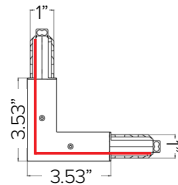
Part No. **9001/W-3C** **9001/B-3C**



STUCCHI EUROSTANDARD PLUS end feed polarity left/ground right.

Finish White Black

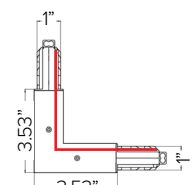
Part No. **9002/W-3C** **9002/B-3C**



STUCCHI EUROSTANDARD PLUS L – Feed polarity external/ground internal.

Finish White Black

Part No. **9012/W-3C** **9012/B-3C**

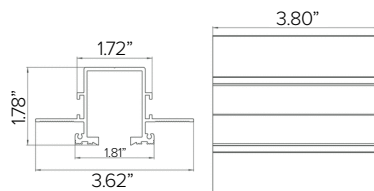
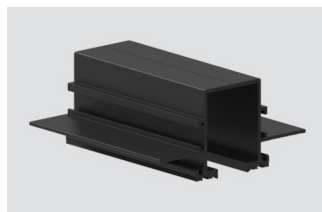


STUCCHI EUROSTANDARD PLUS L – Feed polarity internal/ground external.

Finish White Black

Part No. **9011/W-3C** **9011/B-3C**

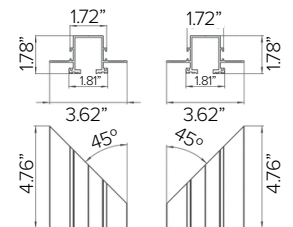
8 – FEED HOUSING (REQUIRED)



STUCCHI EUROSTANDARD PLUS recessed trimless feed housing. Compatible with left/right and linear end feeds only.

Finish White Black

Part No. **S-9001/TR-W** **S-9001/TR-B**



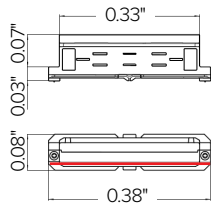
STUCCHI EUROSTANDARD PLUS recessed trimless 'L' feed housing. Compatible with L-feed only.

Finish White Black

Part No. **S-9011/TR-W** **S-9011/TR-B**

EUROSTANDARD PLUS TRACK - RECESSED TRIMLESS

9 - ELECTRICAL CONNECTOR (OPTIONAL)



STUCCHI EUROSTANDARD PLUS STUCCHI EUROSTANDARD PLUS linear joint connector.

Finish	<input type="radio"/> White	<input checked="" type="radio"/> Black
Part No.	9003/W	9003/B