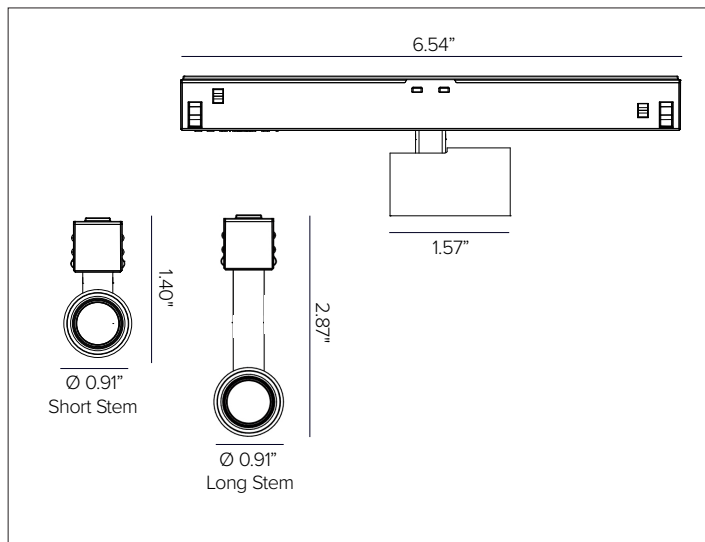


FORTYEIGHT LABEL 2

Low Voltage LED Track Projector



FORTYEIGHT LABEL 2 shown in Deep Black finish.



CONCEPT

Professional low voltage adjustable LED track projector.

MECHANICAL CHARACTERISTICS

Dimensions	0.91" Diameter x 1.57" D
Materials	Die-cast aluminum finished body.
Finish	<input type="radio"/> Plaster White <input checked="" type="radio"/> Deep Black
Power Connection	To be completed with FORTYEIGHT MULTISYSTEM low voltage polarized track.
Functionality	Tool-less installation, utilizing a mechanical fixture system that mounts to FORTYEIGHT MULTISYSTEM track system. NOTE: Max of 4 connectors or 30ft of track per individual 96W power supply and/or 90W. Can be used in combination with FORTYEIGHT fixture range to maximum of 90W per 96W, 48V driver.
Mounting	FORTYEIGHT MULTISYSTEM track system, sold separately. Surface version NOT compatible with FORTYEIGHT RECESSED DEEP TRIMLESS track. Fixture can be vertically adjusted from 0° to 90° and horizontally up to 420° with friction locking system.
Weight	0.29lbs
Protection	IP20

CERTIFICATIONS

cULus Class 2 Listed
 Tested in accordance with LM-79-08.
 Compliant for California installations
 RoHS3 EU 215/863

WARRANTY

5 year limited warranty.

SUSTAINABILITY

Luminaire designed for disposal/recycling at end-of-life. Replaceable LED light source and control gear by a Targetti technician.

ELECTRICAL CHARACTERISTICS

Power Supply	Remote 48V driver required, refer to FORTYEIGHT MULTISYSTEM track spec sheet.
Wattage	3W
Voltage	48V
Control	0-10V to 1% or DALI / Wireless Bluetooth Casambi to 0% Note: Control cable wired directly to track from dimming interface, not through remote driver. 0-10V group fixture control. For individual fixture control DALI or wireless DALI/Casambi. For wireless bluetooth control via Casambi, use DALI fixture in combination with APP1-M-C0-9519 wireless control interface, refer to FORTYEIGHT MULTISYSTEM track specification sheet for detailed information.

SOURCE

High efficiency LED emitter.

TM30	CCT (Nominal)	CRI	R _f	R _g	SDCM
	2700K	90	88	104	1.5
	3000K	90	89	104	1.5
	3500K	90	91	100	1.5
	4000K	90	92	99	1.5

OPTIC

Transparent PMMA lens and holographic filter with different apertures based on the version.

Beam	SP 13°	FL 31°	MWFL 49°
Delivered Lumens	2700K 112Lm 3000K 118Lm 3500K 123Lm 4000K 128Lm	101Lm 106Lm 111Lm 115Lm	97Lm 102Lm 106Lm 110Lm
Efficacy	43 Lm/W max. Refer to photometric graphs for specific values.		
Lifetime	L90/B10 >30,000hrs at max TA +25°C L82/B10 >50,000hrs at max TA +25°C L72/B10 >80,000hrs at max TA +25°C L67/B10 >100,000hrs at max TA +25°C		
Photobiological Classification	Low risk photobiological safety RG1		

FORTYEIGHT LABEL 2

SPECIFICATION INFORMATION

48	LA	2								
1	2	3	4	5	6	7	8	9	10	11
Ex: 48LA210SLISP27PW									REQUIRED	OPTIONAL

1 - PRODUCT CODE	2 - TYPE	3 - SIZE	4 - ADAPTER	5 - STEM	6 - WATTAGE	7 - OPTICS	8 - KELVIN	9 - FINISH
48 — FORTYEIGHT	LA — LABEL	2 — 0.91" Dia.	10 — 0-10V DA ^A — DALI/Wireless Casambi	S ^B — Short L — Long	L1 — 3W	SP — SP 13° FL — FL 31° MW — MWFL 49°	27 — 2700K 30 — 3000K 35 — 3500K 40 — 4000K	PW — Plaster White DB — Deep Black

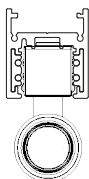
10 - TRACK	11 - OPTICAL ACCESSORIES
REQUIRED To be completed with FORTYEIGHT MULTISYSTEM TRACK RECESSED TRIMLESS DEEP or SURFACE / SUSPENSION	Blade of Light Linear Spread Lens See section for details

^A For wireless bluetooth control via Casambi, use DALI fixture in combination with APP1-M-CO-9519 wireless control interface.
^B Not compatible with Recessed Deep Trimless Track.

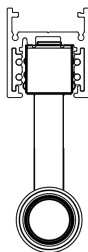
MOUNTING COMPATIBILITY

FORTYEIGHT MULTISYSTEM SURFACE/ SUSPENSION TRACK shown with FORTYEIGHT LABEL 2 (S) SHORT STEM fixture version.

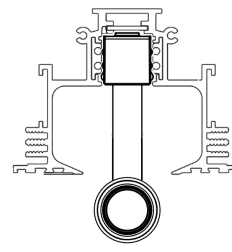
NOTE: (S) SHORT STEM fixture version NOT compatible with FORTYEIGHT RECESSED TRIMLESS DEEP TRACK.



FORTYEIGHT MULTISYSTEM SURFACE/ SUSPENSION TRACK shown with FORTYEIGHT LABEL 2 (L) LONG STEM fixture version.



FORTYEIGHT RECESSED TRIMLESS DEEP TRACK shown with FORTYEIGHT LABEL 2 (L) LONG STEM fixture version.



FORTYEIGHT LABEL 2

11 – ACCESSORIES (OPTIONAL)



Ø 17mm

'Blade of Light' linear spread lens. PMMA holographic filter.

Part No. **1T6939**

FORTYEIGHT LABEL 2

PHOTOMETRY

SPOT



2700K	H(m)	D(m)	Emax(lx)
Ra90		13°	
Fixture Power 3W	1	0.23	1052
Source Flux 134lm	2	0.45	263
Fixture Flux 112lm	3	0.68	117
Efficacy 37lm/W	4	0.90	66
A6361 Imax=7873cd/klm	Imax	1052cd	5 1.13 42



3500K	H(m)	D(m)	Emax(lx)
Ra90		13°	
Fixture Power 3W	1	0.23	1152
Source Flux 146lm	2	0.45	288
Fixture Flux 123lm	3	0.68	128
Efficacy 41lm/W	4	0.90	72
A6363 Imax=7873cd/klm	Imax	1152cd	5 1.13 46

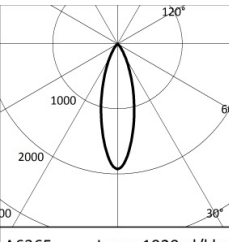


3000K	H(m)	D(m)	Emax(lx)
Ra90		13°	
Fixture Power 3W	1	0.23	1107
Source Flux 141lm	2	0.45	277
Fixture Flux 118lm	3	0.68	123
Efficacy 39lm/W	4	0.90	69
A6362 Imax=7873cd/klm	Imax	1107cd	5 1.13 44

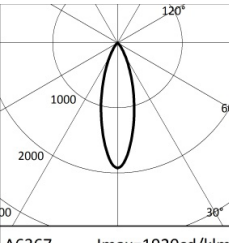


4000K	H(m)	D(m)	Emax(lx)
Ra90		13°	
Fixture Power 3W	1	0.23	1196
Source Flux 152lm	2	0.45	299
Fixture Flux 128lm	3	0.68	133
Efficacy 43lm/W	4	0.90	75
A6364 Imax=7873cd/klm	Imax	1196cd	5 1.13 48

FLOOD



2700K	H(m)	D(m)	Emax(lx)
Ra90		31°	
Fixture Power 3W	1	0.55	257
Source Flux 134lm	2	1.10	64
Fixture Flux 101lm	3	1.65	29
Efficacy 34lm/W	4	2.19	16
A6365 Imax=1920cd/klm	Imax	257cd	5 2.74 10



3500K	H(m)	D(m)	Emax(lx)
Ra90		31°	
Fixture Power 3W	1	0.55	281
Source Flux 146lm	2	1.10	70
Fixture Flux 111lm	3	1.65	31
Efficacy 37lm/W	4	2.19	18
A6367 Imax=1920cd/klm	Imax	281cd	5 2.74 11



3000K	H(m)	D(m)	Emax(lx)
Ra90		31°	
Fixture Power 3W	1	0.55	270
Source Flux 141lm	2	1.10	67
Fixture Flux 106lm	3	1.65	30
Efficacy 35lm/W	4	2.19	17
A6366 Imax=1920cd/klm	Imax	270cd	5 2.74 11



4000K	H(m)	D(m)	Emax(lx)
Ra90		31°	
Fixture Power 3W	1	0.55	292
Source Flux 152lm	2	1.10	73
Fixture Flux 115lm	3	1.65	32
Efficacy 38lm/W	4	2.19	18
A6368 Imax=1920cd/klm	Imax	292cd	5 2.74 12

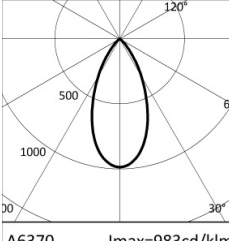
MEDIUM WIDE FLOOD



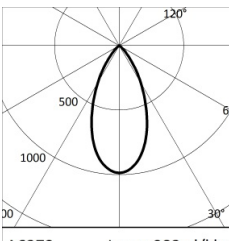
2700K	H(m)	D(m)	Emax(lx)
Ra90		49°	
Fixture Power 3W	1	0.90	131
Source Flux 134lm	2	1.81	33
Fixture Flux 97lm	3	2.71	15
Efficacy 32lm/W	4	3.62	8
A6369 Imax=983cd/klm	Imax	131cd	5 4.52 5



3500K	H(m)	D(m)	Emax(lx)
Ra90		49°	
Fixture Power 3W	1	0.90	144
Source Flux 146lm	2	1.81	36
Fixture Flux 106lm	3	2.71	16
Efficacy 35lm/W	4	3.62	9
A6371 Imax=983cd/klm	Imax	144cd	5 4.52 6



3000K	H(m)	D(m)	Emax(lx)
Ra90		49°	
Fixture Power 3W	1	0.90	138
Source Flux 141lm	2	1.81	35
Fixture Flux 102lm	3	2.71	15
Efficacy 34lm/W	4	3.62	9
A6370 Imax=983cd/klm	Imax	138cd	5 4.52 6



4000K	H(m)	D(m)	Emax(lx)
Ra90		49°	
Fixture Power 3W	1	0.90	149
Source Flux 152lm	2	1.81	37
Fixture Flux 110lm	3	2.71	17
Efficacy 37lm/W	4	3.62	9
A6372 Imax=983cd/klm	Imax	149cd	5 4.52 6