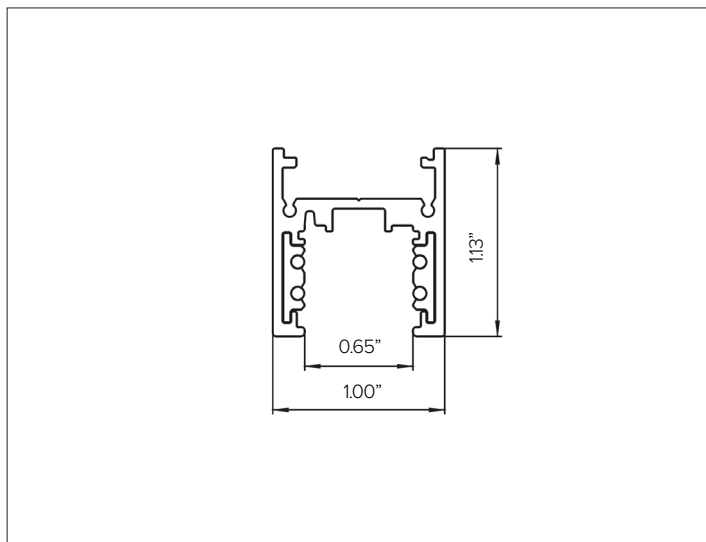


# FORTYEIGHT MULTISYSTEM EVO TRACK - SURFACE/SUSPENSION

## Surface / Suspension Track System



### CONCEPT

Surface/suspension mounted electrified track system.

### MECHANICAL CHARACTERISTICS

<b>Dimensions</b>	1.00"W X 1.13"H
<b>Materials</b>	Aluminum track with PVC insulated copper conductors that feed electricity to the fixture and provide attachment support.
<b>Finish</b>	<input type="radio"/> White <input checked="" type="radio"/> Black
<b>Power Connection</b>	Mechanical electrical polarized connections.
<b>Functionality</b>	Different mounting configurations are achievable using electrical feeds and connectors that make it possible to build a simple or complex systems.
<b>Mounting</b>	To be installed directly to surface (wall or ceiling) or suspension configurations achieved through available mounting options.
<b>Protection</b>	IP20

### ELECTRICAL CHARACTERISTICS

<b>Power Supply</b>	Remote power supply options available.
<b>Voltage</b>	48V DC. <b>Max of 4 connectors per individual power supply.</b>
<b>Circuit</b>	1 circuit, 4 conductor
<b>Control</b>	0-10V to 1% DALI / Wireless Bluetooth Casambi to 0% Control

### CERTIFICATIONS

cULus Class 2 SELV Listed.  
RoHS3 EU 215/863

### WARRANTY

5 year limited warranty.

# FORTYEIGHT MULTISYSTEM EVO TRACK - SURFACE/SUSPENSION

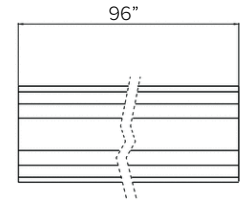
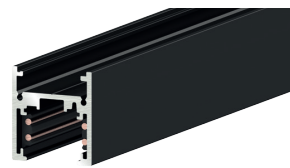
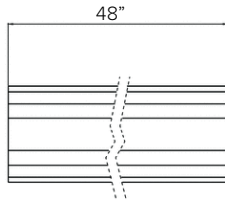
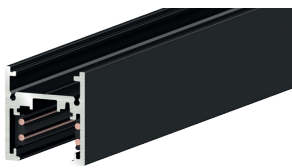
## SPECIFICATION INFORMATION



Ex: 9500-UL4/B-ST6-E / 9504/ST6-B / 9504/ST6-B-F / S-9000/T / 9501-S-KL/B-E / S-9500/115-B / DELV30148JBX

1 - TRACK	2 - END CAP	3 - CUTTING TOOL	4 - ELECTRICAL FEED	5 - ELECTRICAL CONNECTOR	6 - MOUNTING	7 - MECHANICAL JOINT CONNECTOR	8 - INTERFACE	9 - POWER SUPPLY	10 - CONTROLLER
REQUIRED	REQUIRED	REQUIRED	REQUIRED	OPTIONAL	REQUIRED	OPTIONAL	OPTIONAL	REQUIRED	OPTIONAL

### 1 - TRACK (REQUIRED)



STUCCHI MULTISYSTEM EVO surface mounting track, field cuttable with specialized tool (REQUIRED).

Finish  White  Black

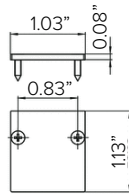
Part No. **9500-UL4/W-ST6-E** **9500-UL4/B-ST6-E**

STUCCHI MULTISYSTEM EVO surface mounting track, field cuttable with specialized tool (REQUIRED).

Finish  White  Black

Part No. **9500-UL8/W-ST6-E** **9500-UL8/B-ST6-E**

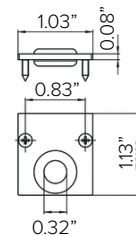
### 2 - END CAP (REQUIRED)



STUCCHI MULTISYSTEM EVO metal end cap, 1pc.

Finish  White  Black

Part No. **9504/ST6-W2** **9504/ST6-B**

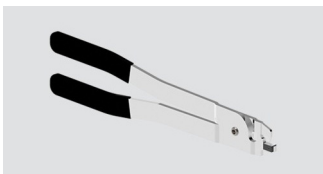


STUCCHI MULTISYSTEM EVO metal end cap with cable feed-through hole, 1pc.

Finish  White  Black

Part No. **9504/ST6-W2-F** **9504/ST6-B-F**

### 3 - CUTTING TOOL (REQUIRED)

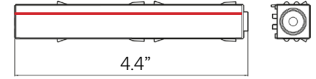
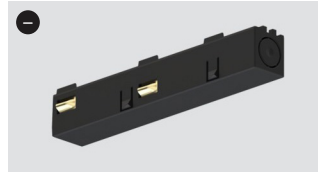


Cutting tool for track conductors.

Part No. **S-9000/T**

# FORTYEIGHT MULTISYSTEM EVO TRACK - SURFACE/SUSPENSION

## 4 - ELECTRICAL FEED (REQUIRED)



STUCCHI MULTISYSTEM EVO linear end feed polarity left.

Finish  White  Black

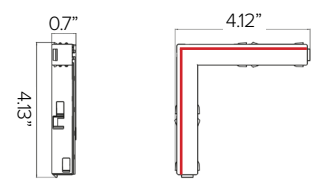
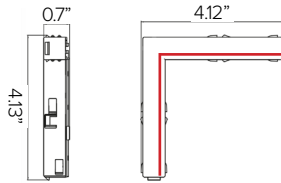
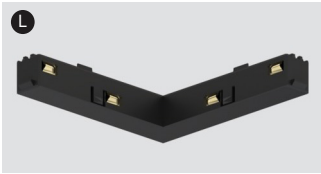
Part No. **9501-S-KL/W-E** **9501-S-KL/B-E**

STUCCHI MULTISYSTEM EVO linear end feed polarity right.

Finish  White  Black

Part No. **9501-S-KR/W-E** **9501-S-KR/B-E**

## 5 - ELECTRICAL CONNECTOR (OPTIONAL)



STUCCHI MULTISYSTEM EVO L – Polarized electrical joint connector, internal polarity. **Max of 5 connectors per individual power supply.**

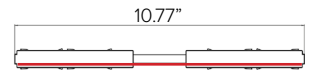
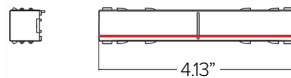
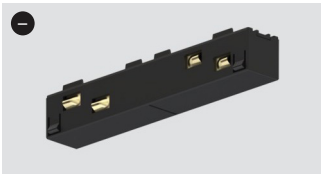
Finish  White  Black

Part No. **9511-KI/W-E** **9511-KI/B-E**

STUCCHI MULTISYSTEM EVO L – Polarized electrical joint connector, external polarity. **Max of 5 connectors per individual power supply.**

Finish  White  Black

Part No. **9511-KE/W-E** **9511-KE/B-E**



STUCCHI MULTISYSTEM EVO linear – Polarized electrical joint connector. **Max of 5 connectors per individual power supply.**

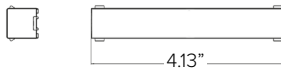
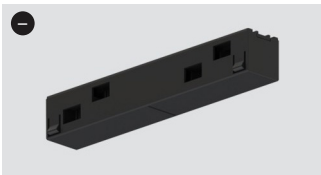
Finish  White  Black

Part No. **9503-S-K/W-E** **9503-S-K/B-E**

STUCCHI MULTISYSTEM EVO Adjustable – Polarized electrical joint connector. **Max of 5 connectors per individual power supply.**

Finish  White  Black

Part No. **9518-S-K/W-E** **9518-S-K/B-E**



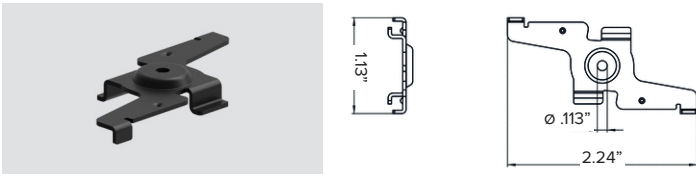
STUCCHI MULTISYSTEM EVO aesthetic non-electric mechanical linear joint.

Finish  White  Black

Part No. **9503-S/W-M-E** **9503-S/B-M-E**

# FORTYEIGHT MULTISYSTEM EVO TRACK - SURFACE/SUSPENSION

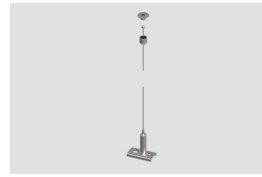
## 6 – MOUNTING (REQUIRED)



STUCCHI MULTISYSTEM EVO Ceiling surface mount bracket

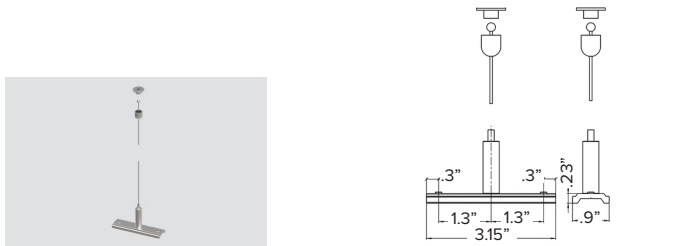
Finish  White  Black

Part No. **S-9500/115-W2** **S-9500/115-B**



STUCCHI MULTISYSTEM EVO suspension kit. 16ft length cable. Recommended 2ea per 4ftL track, 3ea for 8ft track or 4ea per 16ft interconnected track in combination with 9500-KIT2-5.

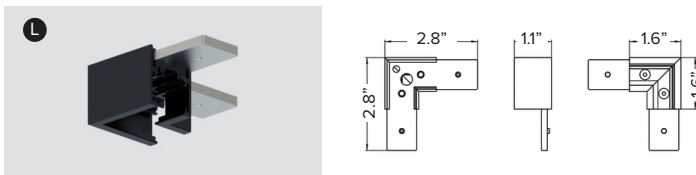
Part No. **9500-KIT1-5**



STUCCHI MULTISYSTEM EVO suspension kit for interconnecting tracks. 16ft length cable provided. To be used combination with 9500-KIT1-5 on the non interconnected lengths.

Part No. **9500-KIT2-5**

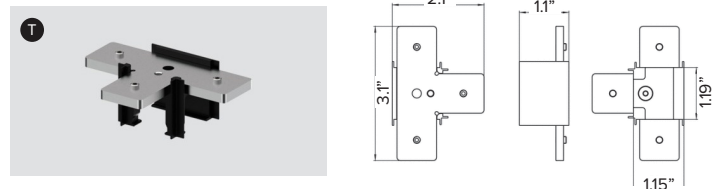
## 7 – MECHANICAL JOINT CONNECTOR (OPTIONAL)



STUCCHI MULTISYSTEM EVO mechanical L-connection joint with steel bracket.

Finish  White  Black

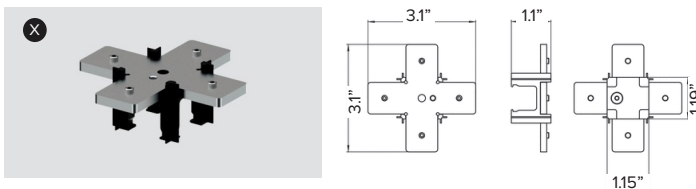
Part No. **S-9511/W2-ST6** **S-9511/B-ST6**



STUCCHI MULTISYSTEM EVO mechanical T-connection joint with steel bracket.

Finish  White  Black

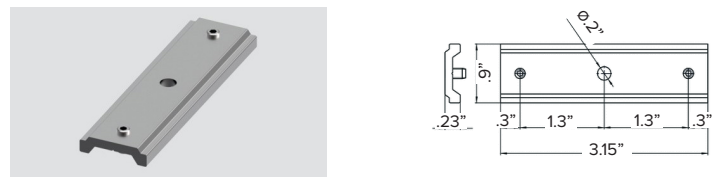
Part No. **S-9513/W2-P-ST6** **S-9513/B-P-ST6**



STUCCHI MULTISYSTEM EVO mechanical X-connection joint with steel bracket.

Finish  White  Black

Part No. **S-9517/W2-P-ST6** **S-9517/B-P-ST6**

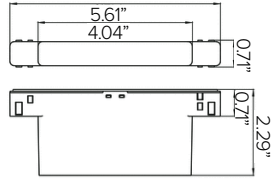


STUCCHI MULTISYSTEM EVO linear joint connector. Required for use in interconnected lengths track lengths.

Part No. **S-9500/323-LA**

# FORTYEIGHT MULTISYSTEM EVO TRACK - SURFACE/SUSPENSION

## 8 – INTERFACE (OPTIONAL)



FORTYEIGHT MULTISYSTEM wireless bluetooth interface. Generates a local bus per run for individual fixture control for up to 96W max or 64 fixtures. Can control fixtures in indoor applications via [Casambi wireless bluetooth protocol](#). **Only to be used with Dali/Wireless Bluetooth Casambi version of FORTYEIGHT fixture range.**

Finish  White  Black

Part No. **APP1-M-C0-9519/W-E** **APP1-M-C0-9519/B-E**

## 9 - POWER SUPPLY (REQUIRED)

ENCLOSURE						
Part No.	Wattage	Rating	In / Out Voltage	Certification	Dimensions (Enclosure)	Description
<b>PS062</b>	100W	NEMA3R	120-277V / 48V	UL-SELV	6.3" x 10.79" x 2.17"	MEAN WELL HLG ELECTRONIC DRIVER MOUNTED IN UL LISTED ENCLOSURE.
<b>PS063</b>	150W	NEMA3R	120-277V / 48V	UL-SELV	6.3" x 10.79" x 2.17"	MEAN WELL HLG ELECTRONIC DRIVER MOUNTED IN UL LISTED ENCLOSURE.
<b>PS064</b>	185W	NEMA3R	120-277V / 48V	UL-SELV	6.3" x 10.79" x 2.17"	MEAN WELL HLG ELECTRONIC DRIVER MOUNTED IN UL LISTED ENCLOSURE.
<b>PS065</b>	240W	NEMA3R	120-277V / 48V	UL-SELV	6.3" x 10.79" x 2.17"	MEAN WELL HLG ELECTRONIC DRIVER MOUNTED IN UL LISTED ENCLOSURE.

MAX CABLE DISTANCE			
Driver Wattage	Max. Overall Distance	Example Track Length	Estimated Lead Wire (provided by others)
<b>100W</b>	<b>160FT</b>	<b>26FT</b>	<b>134FT</b>
<b>150W</b>	<b>120FT</b>	<b>26FT</b>	<b>94FT</b>
<b>185W</b>	<b>65FT</b>	<b>26FT</b>	<b>39FT</b>
<b>200W</b>	<b>60FT</b>	<b>26FT</b>	<b>34FT</b>
<b>240W</b>	<b>48FT</b>	<b>26FT</b>	<b>22FT</b>

\*Voltage drop calculations are based on 18gu wire.

## 10 - CONTROLLER (OPTIONAL)

**COMPATIBLE WITH WIRELESS BLUE TOOTH CASAMBI VERSION ONLY FOR INDIVIDUAL FIXTURE CONTROL.**



Casambi Xpress remote controller, indoor mounted only. Four programmable presets. CR2430 battery (Included). **For DALI / Wireless Bluetooth Casambi control only. Each controller can program up to 4ea APP1-M-C0-9519 interfaces.**

Finish  White  Black

Part No. **SWITCH26** **SWITCH25**