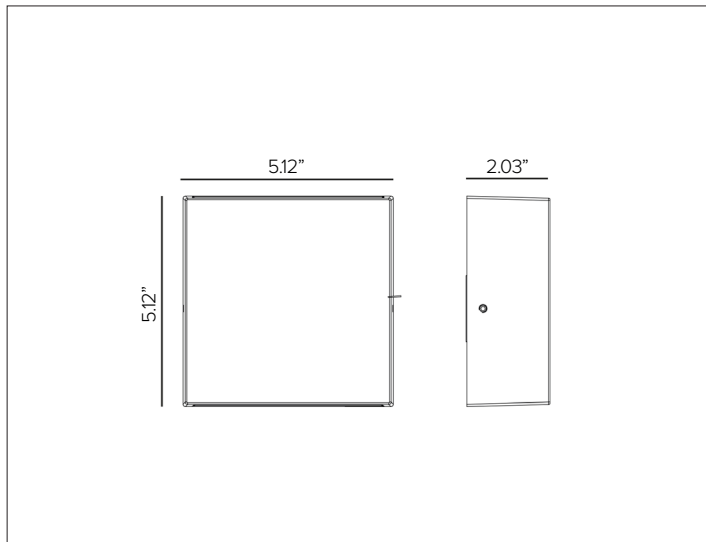
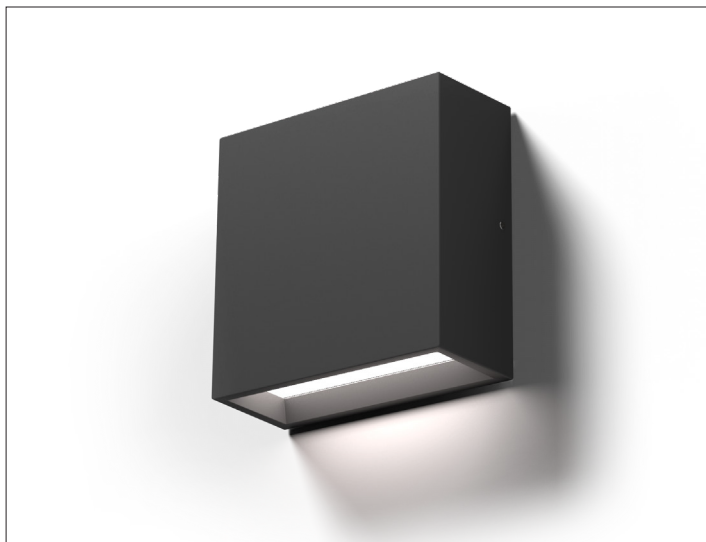


MR. SMITH

Wall Mount Luminaire



CONCEPT

Surface wall mounted LED luminaire.

MECHANICAL CHARACTERISTICS

Housing	5.12"H x 5.12"W x 2.03"D
Materials	Powder coated anodized die-cast aluminum body and optical unit with injection molded opal polycarbonate lens.
Finish	Textured finish. ● Ferrite Dark Grey ● Heritage Brown ● Bronze ● Black ● White ● Sandstone Grey
Power Connection	Fixture provided with 7"L line voltage dimming wire.
Functionality	Direct emission features regressed lens for maximum visual comfort. Indirect emission features flush lens with a tapered design for maximum water flow-off.
Mounting	Surface mounted. Fixture is supplied with a universal adapter plate to mount over standard 4"x4" junction box.
BUG	MD: B1-U0-G0 Dark Sky Compliant MU: B0-U4-G0 BI: B1-U4-G0
Weight	1.43lbs
Protection	IP65
Impact	IK08

CERTIFICATIONS

cULus Wet Location Listed.
 Tested in accordance with LM-79-08.
 Compliant for California installations.
 IEC 62471
 RoHS3 EU 215/863

WARRANTY

5 year limited warranty

ELECTRICAL CHARACTERISTICS

Power Supply	Integral 4/1 smart driver (Non-Dimmable / 0-10V / Reverse Phase / Forward Phase).
Wattage	Monoemission 7W / Biemission 13W
Voltage	120-277V AC 50/60Hz
Ambient Temp.	-25°C / +35°C (95°F)

SOURCE

High efficiency LED Chip on Board.

TM30	CCT (Nominal)	CRI	Rf	Rg	SDCM
	2700K	84	82	96	2
	3000K	84	83	96	2
	3500K	80	83	95	2
	4000K	84	82	95	2

Ra90 available upon request

OPTIC

MicroPet high reflectance white spotlight.

Beam	Mono Direct	Mono Indirect	Biemission
Delivered Lumens			
2700K	500Lm	636Lm	1,136Lm
3000K	522Lm	664Lm	1,186Lm
4000K	535Lm	681Lm	1,217Lm

For 3500K lumen values use multiplier of 1.02 from 3000K.

Efficacy	97lm/W max. Refer to photometric graphs for specific values.
Lifetime	L92/B10 30,000hrs at max TA +25°C L90/B10 50,000hrs at max TA +25°C
Photobiological Classification	Low risk photobiological safety RG1

MR. SMITH

SPECIFICATION INFORMATION

MRS

1 2 3 4 5 6 7 8

Ex: MRSW41FEMDL130

OPTIONAL

1 - PRODUCT CODE	2 - TYPE	3 - DRIVER	4 - FINISH	5 - EMISSION	6 - WATTAGE	7 - KELVIN
MRS — MR SMITH	W — Wall Mounted	41 — 4/1 Smart Dimming (<i>Non-Dimming / 0-10V / Reverse Phase / Forward Phase</i>)	FE — Ferrite Dark Grey HB — Heritage Brown BZ — Bronze WT — White BT — Black SG — Sandstone Grey RAL — Custom RAL	MD [®] — Monoemission Direct MU [®] — Monoemission Indirect BI [®] — Biemission	L1 — 7W L2 [®] — 13W	27 — 2700K 30 — 3000K 35 — 3500K 40 — 4000K

8 - OPTIONAL

MG^A — Marine Grade

^A Marine Grade is recommended for use in environments with occasional exposure to salt air, reclaimed water, fertilizers, chemical cleaners, or frequent pressure washing (steam) cleaning. Fixture housing complete with marine grade cataphoresis suitable for use in marine grade environments. Not to be in direct contact with salt or corrosive agents for extended periods of time.
[®] Monoemission Direct and Monoemission Indirect only available in 7W.
[®] Biemission only available in 13W.

MR. SMITH

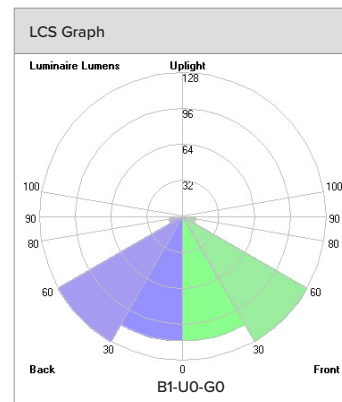
PHOTOMETRY

MONOEMISSION DIRECT

	2700K	H(m)	D1(m)	D2(m)	E _{max} (lx)		
	Ra84		102°	64°			
	Fixture Power	7W	1	2.46	1.26	301	
	Source Flux	913lm	2	4.91	2.51	75	
	Fixture Flux	500lm	3	7.37	3.77	33	
	Efficacy	71lm/W	4	9.82	5.03	19	
TS1198	I _{max} =330cd/klm	I _{max}	302cd	5	12.28	6.29	12

	3000K	H(m)	D1(m)	D2(m)	E _{max} (lx)		
	Ra84		102°	64°			
	Fixture Power	7W	1	2.46	1.26	315	
	Source Flux	954lm	2	4.91	2.51	79	
	Fixture Flux	522lm	3	7.37	3.77	35	
	Efficacy	75lm/W	4	9.82	5.03	20	
TS1198	I _{max} =330cd/klm	I _{max}	315cd	5	12.28	6.29	13

	4000K	H(m)	D1(m)	D2(m)	E _{max} (lx)		
	Ra84		102°	64°			
	Fixture Power	7W	1	2.46	1.26	323	
	Source Flux	979lm	2	4.91	2.51	81	
	Fixture Flux	535lm	3	7.37	3.77	36	
	Efficacy	76lm/W	4	9.82	5.03	20	
TS1198	I _{max} =330cd/klm	I _{max}	323cd	5	12.28	6.29	13

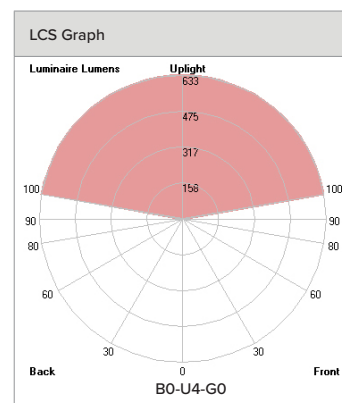


MONOEMISSION INDIRECT

	2700K					
	Ra84					
	Fixture Power	7W				
	Source Flux	913lm				
	Fixture Flux	636lm				
	Efficacy	91lm/W				
TS1197	I _{max} =379cd/klm	I _{max}	346cd			

	3000K					
	Ra84					
	Fixture Power	7W				
	Source Flux	954lm				
	Fixture Flux	664lm				
	Efficacy	95lm/W				
TS1197	I _{max} =379cd/klm	I _{max}	361cd			

	4000K					
	Ra84					
	Fixture Power	7W				
	Source Flux	979lm				
	Fixture Flux	681lm				
	Efficacy	97lm/W				
TS1197	I _{max} =379cd/klm	I _{max}	371cd			

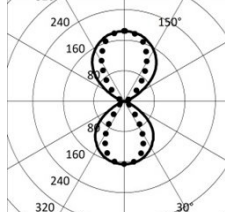


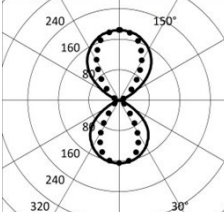
MR. SMITH

PHOTOMETRY

BIEMISSION

	2700K	H(m)	D1(m)	D2(m)	E _{max} (lx)		
	Ra84		102°	64°			
	Fixture Power	13W	1	2.46	1.26	301	
	Source Flux	1827lm	2	4.91	2.51	75	
	Fixture Flux	1136lm	3	7.37	3.77	33	
	Efficacy	87lm/W	4	9.82	5.03	19	
TS1199	I _{max} =184cd/klm	I _{max}	337cd	5	12.28	6.29	12

	3000K	H(m)	D1(m)	D2(m)	E _{max} (lx)		
	Ra84		102°	64°			
	Fixture Power	13W	1	2.46	1.26	315	
	Source Flux	1907lm	2	4.91	2.51	79	
	Fixture Flux	1186lm	3	7.37	3.77	35	
	Efficacy	91lm/W	4	9.82	5.03	20	
TS1199	I _{max} =184cd/klm	I _{max}	351cd	5	12.28	6.29	13

	4000K	H(m)	D1(m)	D2(m)	E _{max} (lx)		
	Ra84		102°	64°			
	Fixture Power	13W	1	2.46	1.26	323	
	Source Flux	1957lm	2	4.91	2.51	81	
	Fixture Flux	1217lm	3	7.37	3.77	36	
	Efficacy	94lm/W	4	9.82	5.03	20	
TS1199	I _{max} =184cd/klm	I _{max}	361cd	5	12.28	6.29	13

