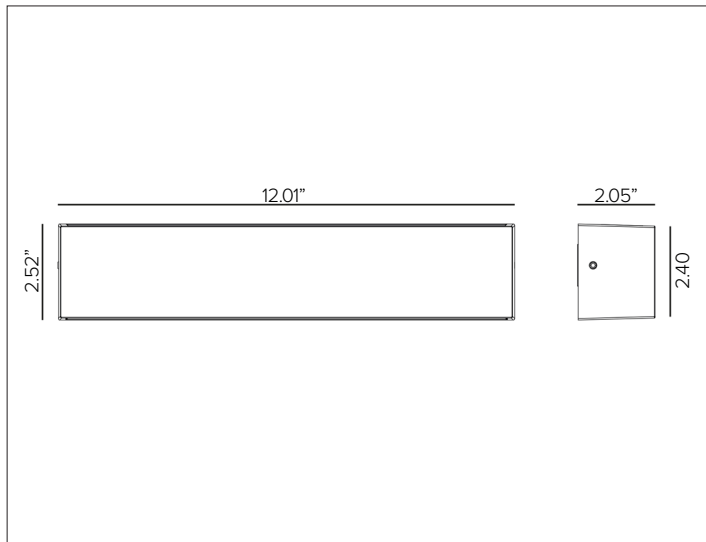
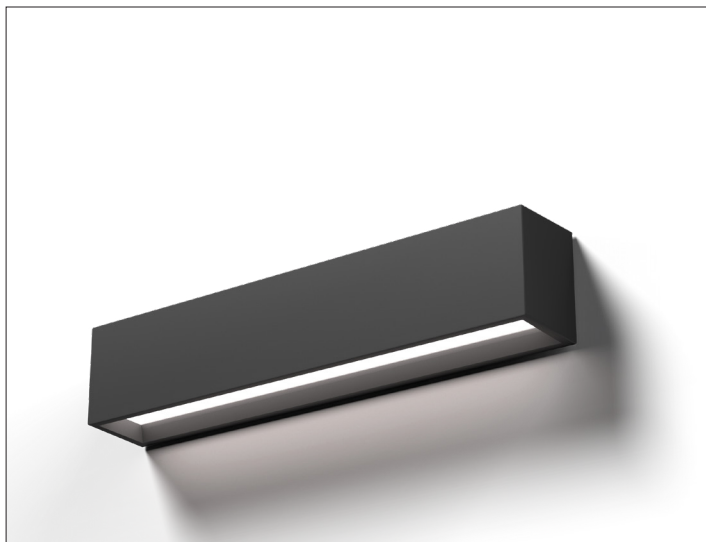


# MRS. SMITH

## Wall Mount Luminaire



### CONCEPT

Surface wall mounted LED luminaire.

### MECHANICAL CHARACTERISTICS

<b>Housing</b>	2.52"H x 12.01"W x 2.05"D
<b>Materials</b>	Powder coated anodized die-cast aluminum body and optical unit with injection molded opal polycarbonate lens.
<b>Finish</b>	Textured finish provided as standard. ● Ferrite Dark Grey   ● Heritage Brown   ● Bronze ● Black   ● White   ● Sandstone Grey
<b>Power Connection</b>	Fixture provided with 12"L liquid tight flexible conduit.
<b>Functionality</b>	Direct emission features regressed lens for maximum visual comfort. Indirect emission features flush lens with a tapered design for maximum water flow-off.
<b>Mounting</b>	Surface mounted. For mounting over recessed 4"x4" J-box, recommended for use with Mud Plate Kit option for finished surface.
<b>BUG</b>	MD: B0-U0-G0 Dark Sky Compliant MU: B0-U4-G0 BI: B0-U4-G0
<b>Weight</b>	2.0lbs
<b>Protection</b>	IP65
<b>Impact</b>	IK08

### CERTIFICATIONS

cULus Wet Location Listed.  
 Tested in accordance with LM-79-08.  
 Compliant for California installations.  
 IEC 62471  
 RoHS3 EU 215/863

### WARRANTY

5 year limited warranty

### ELECTRICAL CHARACTERISTICS

<b>Power Supply</b>	Integral 4/1 smart driver (Non-Dimmable / 0-10V / Reverse Phase / Forward Phase).
<b>Wattage</b>	Monoemission 7W / Biemission 14W
<b>Voltage</b>	120-277V AC 50/60Hz
<b>Ambient Temp.</b>	-25°C / +35°C (95°F)

### SOURCE

High efficiency linear LED board.

TM30	CCT (Nominal)	CRI	Rf	Rg	SDCM
	2700K	84	83	97.3	2
	3000K	84	91.4	100.8	2
	3500K	80	83	95	2
	4000K	84	82	95	2

*Ra90 available upon request*

### OPTIC

MicroPet high reflectance white spotlight.

Beam	Mono Direct	Mono Indirect	Biemission
<b>Delivered Lumens</b>	<b>2700K</b> 463Lm	519Lm	982Lm
	<b>3000K</b> 498Lm	558Lm	1,055Lm
	<b>4000K</b> 525Lm	589Lm	1,113Lm

*For 3500K lumen values use multiplier of 1.02 from 3000K.*

<b>Efficacy</b>	85Lm/W max. Refer to photometric graphs for specific values.
<b>Lifetime</b>	L95/B10 30,000hrs at max TA +25°C L92/B10 50,000hrs at max TA +25°C
<b>Photobiological Classification</b>	Low risk photobiological safety RG1

MRS. SMITH

SPECIFICATION INFORMATION



Ex: MSSW41FEMDL130 / 1USMK02

1 - PRODUCT CODE	2 - TYPE	3 - DRIVER	4 - FINISH	5 - EMISSION	6 - WATTAGE	7 - KELVIN
<b>MSS</b> — MRS SMITH	<b>W</b> — Wall Mounted	<b>41</b> — 4/1 Smart Dimming (Non-Dimming / 0-10V / Reverse Phase / Forward Phase)	<b>FE</b> — Ferrite Dark Grey <b>HB</b> — Heritage Brown <b>BZ</b> — Bronze <b>WT</b> — White <b>BT</b> — Black <b>SG</b> — Sandstone Grey <b>RAL</b> — <a href="#">Custom RAL</a>	<b>MD</b> <sup>®</sup> — Monoemission Direct <b>MU</b> <sup>®</sup> — Monoemission Indirect <b>BI</b> <sup>®</sup> — Biemission	<b>L1</b> — 7W <b>L2</b> — 14W	<b>27</b> — 2700K <b>30</b> — 3000K <b>35</b> — 3500K <b>40</b> — 4000K

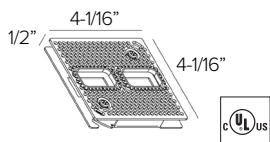
8 - MARINE GRADE	9 - MOUNTING
<b>MG</b> <sup>A</sup> — Marine Grade	<u>J-box wall mount plate</u> See section for details

<sup>A</sup> Marine Grade is recommended for use in environments with occasional exposure to salt air, reclaimed water, fertilizers, chemical cleaners, or frequent pressure washing (steam) cleaning. Fixture housing complete with marine grade cataphoresis suitable for use in marine grade environments. Not to be in direct contact with salt or corrosive agents for extended periods of time.

<sup>®</sup> Monoemission Direct and Monoemission Indirect only available in 7W.

<sup>®</sup> Biemission only available in 14W.

9 – MOUNTING (OPTIONAL)



Mud plate for mounting over 4"x4" j-box. **Recommended for use with dry wall or stucco installations.**

Part No. **1USMK02**

# MRS. SMITH

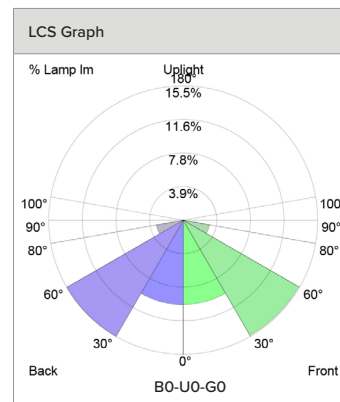
## PHOTOMETRY

### MONOEMISSION DIRECT

	2700K	H(m)	D1(m)	D2(m)	E <sub>max</sub> (lx)		
	Ra84	90°	100°				
	Fixture Power	7W	1	2.00	2.38	215	
	Source Flux	815lm	2	4.01	4.75	54	
	Fixture Flux	463lm	3	6.01	7.13	24	
	Efficacy	67lm/W	4	8.01	9.50	13	
TS1202	I <sub>max</sub> =264cd/klm	I <sub>max</sub>	215cd	5	10.01	11.88	9

	3000K	H(m)	D1(m)	D2(m)	E <sub>max</sub> (lx)		
	Ra84	90°	100°				
	Fixture Power	7W	1	2.00	2.38	231	
	Source Flux	876lm	2	4.01	4.75	58	
	Fixture Flux	498lm	3	6.01	7.13	26	
	Efficacy	72lm/W	4	8.01	9.50	14	
TS1202	I <sub>max</sub> =264cd/klm	I <sub>max</sub>	231cd	5	10.01	11.88	9

	4000K	H(m)	D1(m)	D2(m)	E <sub>max</sub> (lx)		
	Ra84	90°	100°				
	Fixture Power	7W	1	2.00	2.38	243	
	Source Flux	924lm	2	4.01	4.75	61	
	Fixture Flux	525lm	3	6.01	7.13	27	
	Efficacy	76lm/W	4	8.01	9.50	15	
TS1202	I <sub>max</sub> =264cd/klm	I <sub>max</sub>	244cd	5	10.01	11.88	10

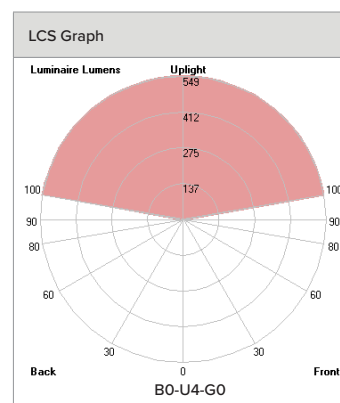


### MONOEMISSION INDIRECT

	2700K	H(m)	D1(m)	D2(m)	E <sub>max</sub> (lx)		
	Ra84	90°	100°				
	Fixture Power	7W	1	2.00	2.38	212	
	Source Flux	815lm	2	4.01	4.75	54	
	Fixture Flux	519lm	3	6.01	7.13	24	
	Efficacy	75lm/W	4	8.01	9.50	13	
TS1200	I <sub>max</sub> =260cd/klm	I <sub>max</sub>	212cd	5	10.01	11.88	9

	3000K	H(m)	D1(m)	D2(m)	E <sub>max</sub> (lx)		
	Ra84	90°	100°				
	Fixture Power	7W	1	2.00	2.38	228	
	Source Flux	876lm	2	4.01	4.75	58	
	Fixture Flux	558lm	3	6.01	7.13	26	
	Efficacy	81lm/W	4	8.01	9.50	14	
TS1200	I <sub>max</sub> =260cd/klm	I <sub>max</sub>	228cd	5	10.01	11.88	9

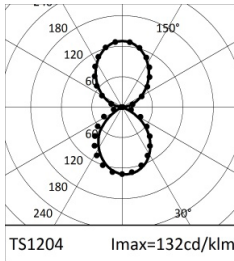
	4000K	H(m)	D1(m)	D2(m)	E <sub>max</sub> (lx)		
	Ra84	90°	100°				
	Fixture Power	7W	1	2.00	2.38	240	
	Source Flux	924lm	2	4.01	4.75	61	
	Fixture Flux	589lm	3	6.01	7.13	27	
	Efficacy	85lm/W	4	8.01	9.50	15	
TS1200	I <sub>max</sub> =260cd/klm	I <sub>max</sub>	240cd	5	10.01	11.88	10

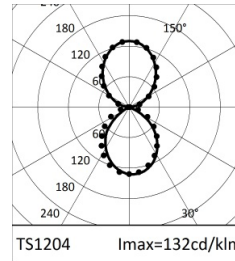


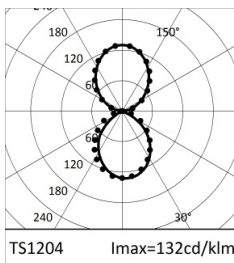
MRS. SMITH

PHOTOMETRY

BIEMISSION

	2700K	H(m)	D1(m)	D2(m)	E <sub>max</sub> (lx)	
	Ra84		90°	100°		
	Fixture Power	14W	1	2.00	2.38	215
	Source Flux	1630lm	2	4.01	4.75	54
	Fixture Flux	982lm	3	6.01	7.13	24
	Efficacy	71lm/W	4	8.01	9.50	13
	TS1204 I <sub>max</sub> =132cd/klm	I <sub>max</sub>	215cd	5	10.01	11.88

	3000K	H(m)	D1(m)	D2(m)	E <sub>max</sub> (lx)	
	Ra84		90°	100°		
	Fixture Power	14W	1	2.00	2.38	231
	Source Flux	1752lm	2	4.01	4.75	58
	Fixture Flux	1055lm	3	6.01	7.13	26
	Efficacy	76lm/W	4	8.01	9.50	14
	TS1204 I <sub>max</sub> =132cd/klm	I <sub>max</sub>	231cd	5	10.01	11.88

	4000K	H(m)	D1(m)	D2(m)	E <sub>max</sub> (lx)	
	Ra84		90°	100°		
	Fixture Power	14W	1	2.00	2.38	243
	Source Flux	1848lm	2	4.01	4.75	61
	Fixture Flux	1113lm	3	6.01	7.13	27
	Efficacy	80lm/W	4	8.01	9.50	15
	TS1204 I <sub>max</sub> =132cd/klm	I <sub>max</sub>	244cd	5	10.01	11.88

