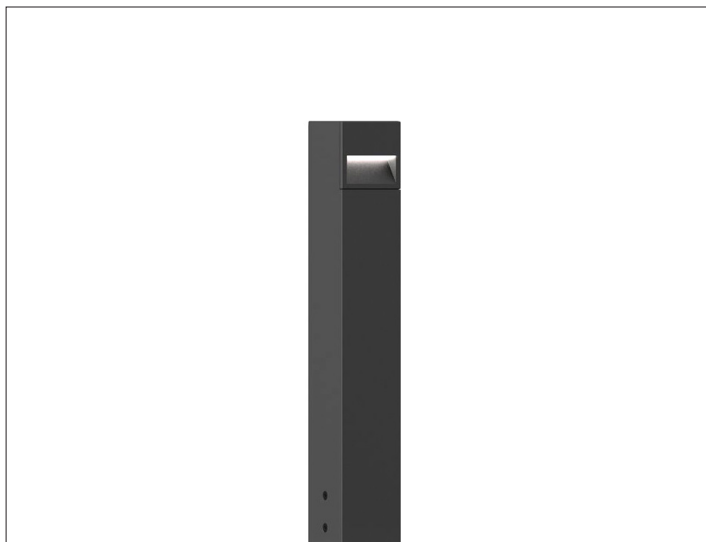
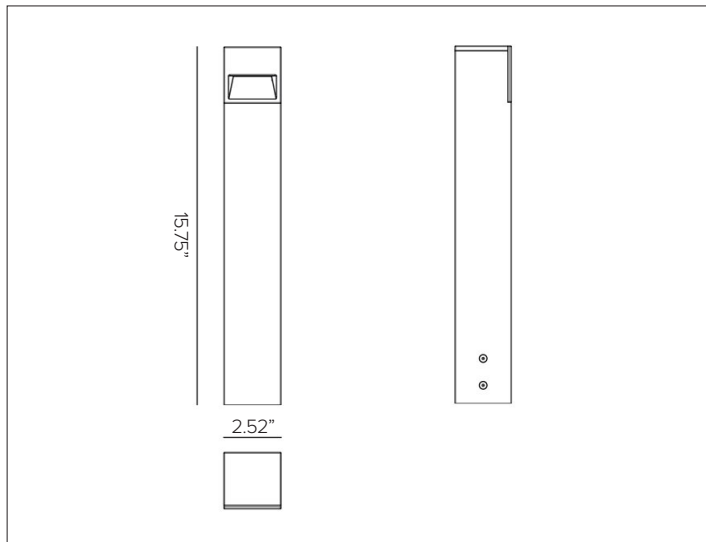


# ZEDGE MINI BOLLARD

## Miniature LED Bollard



ZEDGE MINI BOLLARD in Ferrite Dark Grey finish.



### CONCEPT

Miniature LED bollard for outdoor applications.

### MECHANICAL CHARACTERISTICS

<b>Housing</b>	15.75"H x 2.52"W
<b>Materials</b>	Die-cast powder coated aluminum fixture independently sealed LED housing and heat sink with anodized powder coated extruded aluminum post. Aesthetically pleasing with no visible hardware between fixture and post and clean fit seams between fixture and post.
<b>Finish</b>	Textured finish. <ul style="list-style-type: none"> <li>● Ferrite Dark Grey   ● Heritage Brown   ● Bronze</li> <li>● Black   ● White   ● Sandstone Grey</li> </ul>
<b>Power Connection</b>	Pre-cabled with 4ft SJ00W 18-6 with DSM&T quick disconnect.
<b>Mounting</b>	316L grade stainless steel base, anchor bolts supplied by others. Bollard body mounts to Concrete Pour or Surface Mount Plate, sold separately.
<b>BUG</b>	BO-U0-G0
<b>Weight</b>	3lbs
<b>Protection</b>	IP66
<b>Impact</b>	IK10

### CERTIFICATIONS

cULus Wet Location Listed.  
 Tested in accordance with LM-79-08.  
 Compliant for California installations.  
 IEC 62471  
 RoHS3 EU 215/863

### WARRANTY

5 year limited warranty

### SUSTAINABILITY

Luminaire designed for disposal/recycling at end-of-life. Replaceable LED light source and control gear by a Targetti technician.

### ELECTRICAL CHARACTERISTICS

<b>Power Supply</b>	Integral 4/1 smart driver (Non-Dimmable / 0-10V / Reverse Phase / Forward Phase).
<b>Wattage</b>	6W
<b>Voltage</b>	Universal Voltage 120-277V AC 50/60Hz
<b>Ambient Temp.</b>	-25°C / +35°C (95°F)

### SOURCE

High Efficiency LED Board.

TM30	CCT (Nominal)	CRI	Rf	Rg	SDCM
ZEDGE MINI version	2700K	90	83	973	2
	3000K	90	82.9	97	2
	3500K	90	83.6	96.5	2
	4000K	90	82.6	95.7	2
ZEDGE MINI HO version	2700K	90	90.9	100.1	2
	3000K	90	90.3	100.4	2
	3500K	90	83.6	96.5	2
	4000K	90	89.8	98.7	2

### OPTIC

Uniform optical distribution and excellent visual comfort. Optical system is dependent version. ZES version is comprised of polycarbonate opal lens. ZESHO version is comprised of polycarbonate clear lens.

Beam	ZES 56°X94°	ZESHO 27°X63°	
<b>Delivered Lumens</b>			
	2700K	68Lm	171Lm
	3000K	72Lm	181Lm
	3500K	74Lm	186Lm
	4000K	74Lm	187Lm
<b>Efficacy</b>	48Lm/W max. Refer to photometric graphs for specific values.		
<b>Lifetime</b>	L80/B10 72,000hrs at max TA +25°C		
<b>Photobiological Classification</b>	Low risk photobiological safety RG1		

# ZEDGE MINI BOLLARD

## SPECIFICATION INFORMATION

<b>ZES</b>	<b>B</b>								
1	2	3	4	5	6	7	8	9	

Ex: ZESHOB41FWFEL230 / 1E3741

**REQUIRED**

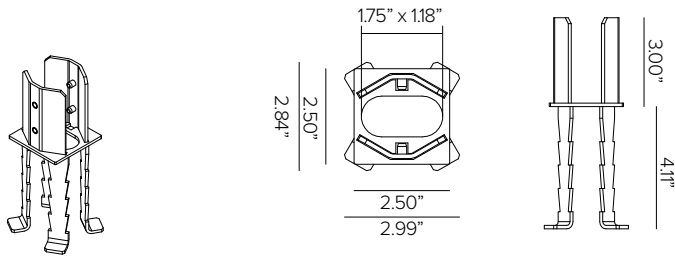
1 - PRODUCT CODE	2 - TYPE	3 - DRIVER	4 - FACEPLATE	5 - FINISH	6 - WATTAGE	7 - KELVIN
<b>ZES</b> — ZEDGE MINI BOLLARD	<b>B</b> — Bollard	<b>41</b> — 4/1 Smart Dimming (Non-Dimming / 0-10V / Reverse Phase / Forward Phase)	<b>FW</b> — Floor Washer	<b>FE</b> — Ferrite Dark Grey <b>HB</b> — Heritage Brown <b>BZ</b> — Bronze <b>WT</b> — White <b>BT</b> — Black <b>SG</b> — Sandstone Grey <b>RAL</b> — <a href="#">Custom RAL</a>	<b>L3</b> — 6W	<b>27</b> — 2700K
<b>ZESHO</b> — ZEDGE MINI HIGH OUTPUT					<b>L1</b> — 6W	<b>30</b> — 3000K
						<b>35</b> — 3500K
						<b>40</b> — 4000K

8 - OPTIONAL	9 - MOUNTING
<b>MG<sup>A</sup></b> — Marine Grade	<a href="#">Concrete Pour</a> See section for details <a href="#">Plate for Surface</a> See section for details <a href="#">Mounting Base with Anchor Rods</a> See section for details

<sup>A</sup>Marine Grade is recommended for use in environments with occasional exposure to salt air, reclaimed water, fertilizers, chemical cleaners, or frequent pressure washing (steam) cleaning. Fixture housing complete with marine grade cathaphoresis suitable for use in marine grade environments. Not to be in direct contact with salt or corrosive agents for extended periods of time.

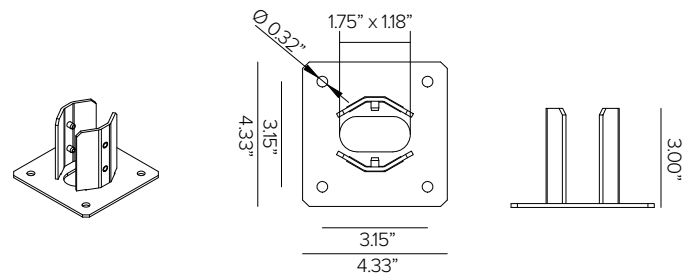
# ZEDGE MINI BOLLARD

## 9 – MOUNTING (REQUIRED)



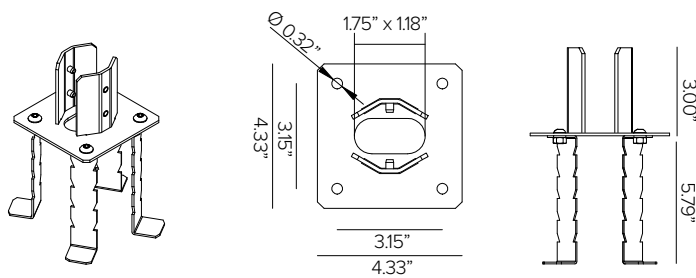
ZEDGE MINI BOLLARD AISI 316 stainless steel mounting base with fixing rods for concrete pour installation.

Part No. **1E3740**



ZEDGE MINI BOLLARD AISI 316 stainless steel plate for surface installation. Compatible with dowels to be inserted into 4ea holes.

Part No. **1E3741 (\*)**



Powder coated mounting base with ground anchor fixing rods for installation in concrete. AISI 316 stainless steel. Mounting bolts included.

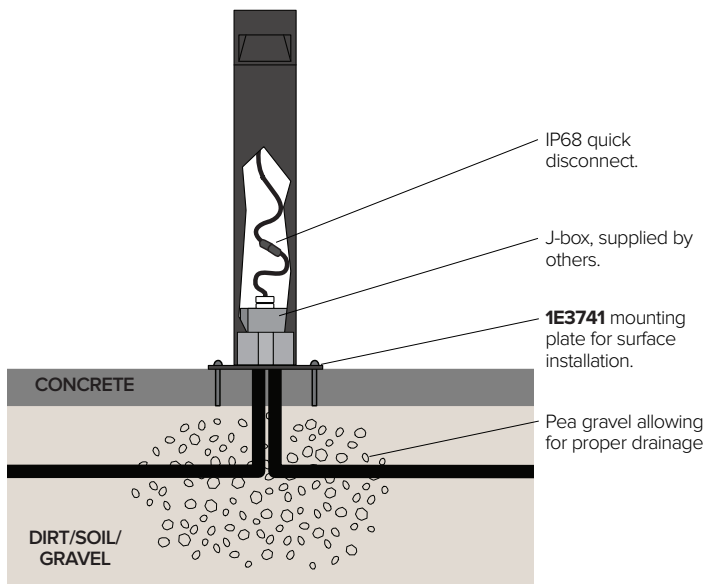
Part No. **1US3741 (\*)**

- Ferrite Dark Grey (Default)
- Heritage Brown (HB)\*
- Bronze (BZ)\*
- White (WT)\*
- Black (BT)\*
- Sandstone Grey (SG)\*

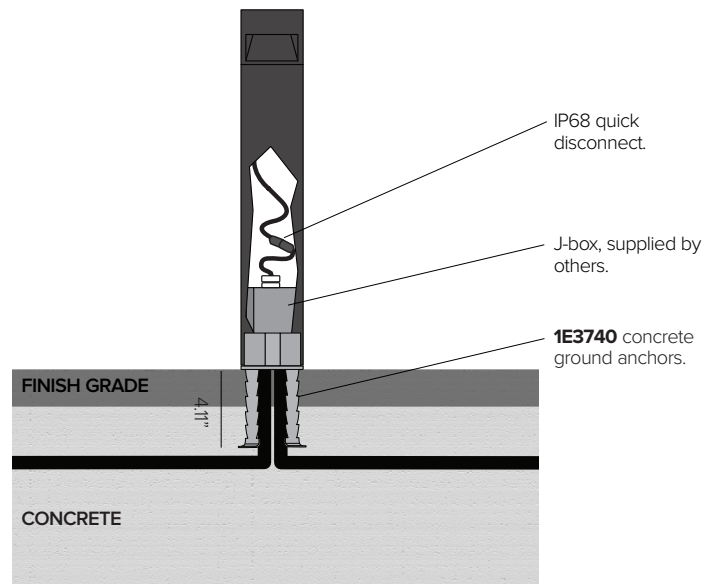
\*Add suffix to end of number to identify finish (EX. 1E3741HB)

## INSTALLATION DIAGRAM

### SURFACE INSTALLATION



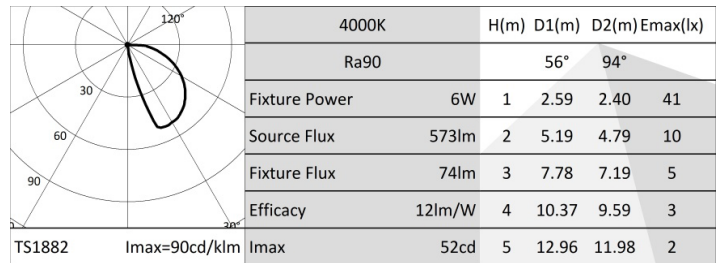
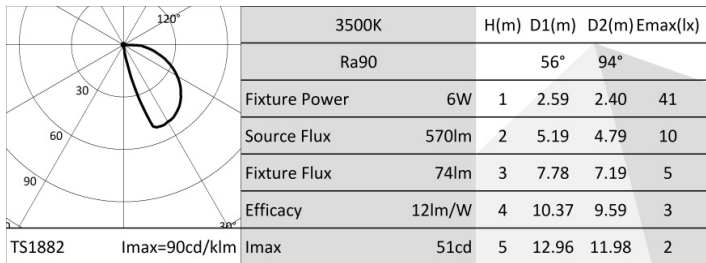
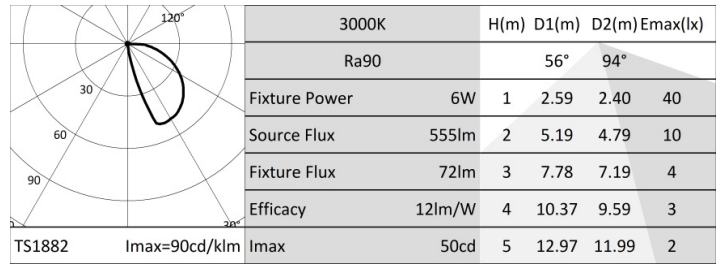
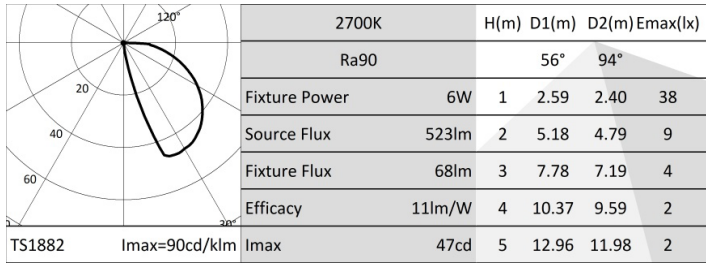
### CONCRETE POUR INSTALLATION



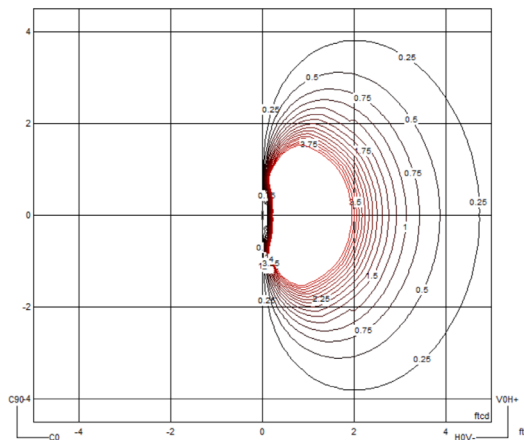
# ZEDGE MINI BOLLARD

## PHOTOMETRY

### STANDARD VERSION

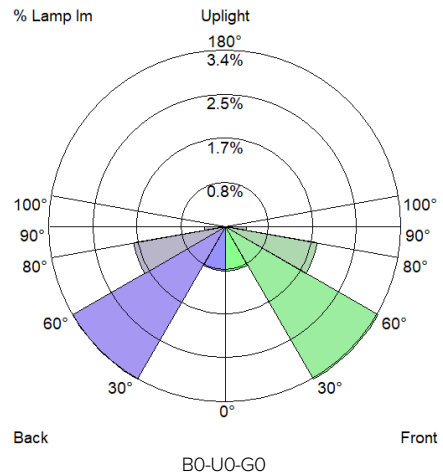


### ISOLUX DIAGRAM



MOUNTING HEIGHT = 16"

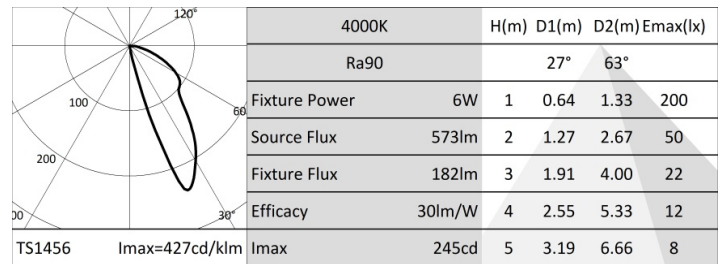
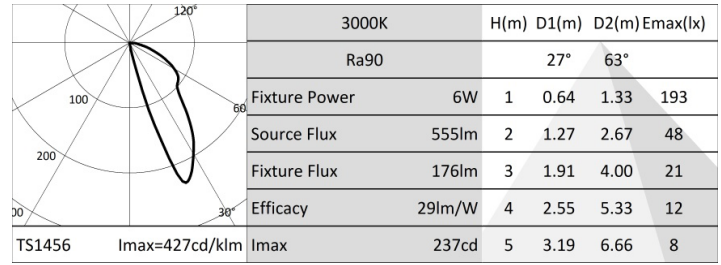
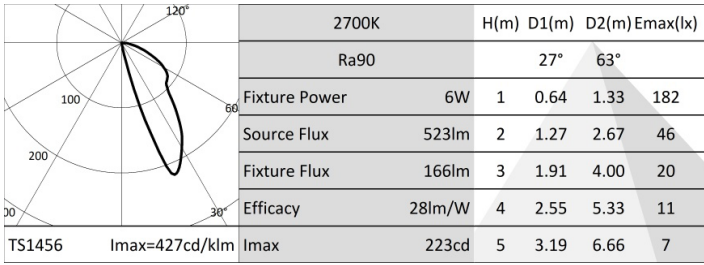
### LCS GRAPH



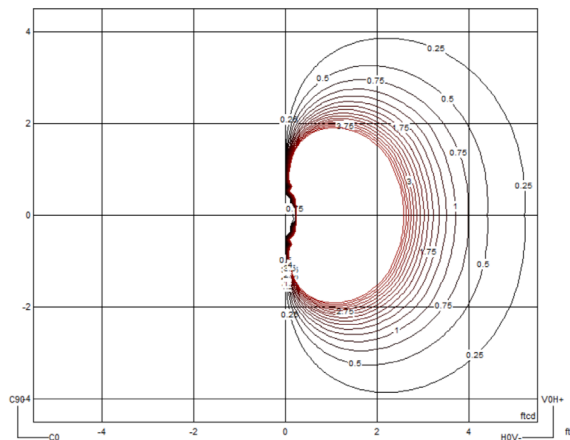
# ZEDGE MINI BOLLARD

## PHOTOMETRY

### HO VERSION



### ISOLUX DIAGRAM



MOUNTING HEIGHT = 16"

### LCS GRAPH

