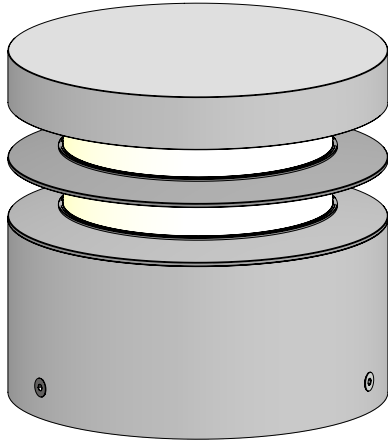




FEBO EVO

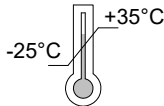
FEB41-

PROFESSIONAL LED WALL FACADE
ILLUMINATOR OR PATHWAY BOLLARD



120/277V
50/60Hz

IP67
IK10



If in doubt about the symbols please refer to catalog or website

WARNING

To ensure a maximum efficient use of the product, read the instructions before proceeding installment.



This fixture must be installed by a licensed and qualified electrician. The installer must comply with NEC and local building codes when installing the fixture



Electrical current can cause painful shock, serious injury, or even death. Make sure you turn off the power supply, ground fixture(s), and make sure all electrical connections are correct and secured tightly



For use in IP67 installations.



Keep the label of the original packaging if any eventual future claims are needed

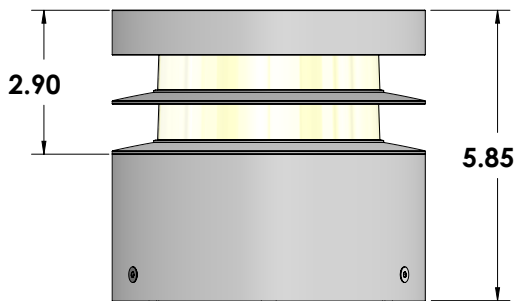
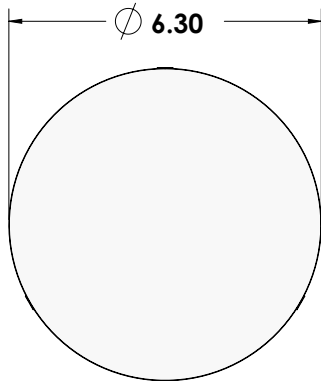
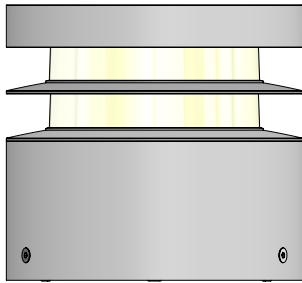


Table of Contents

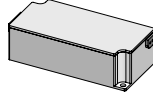
Packaging Contents / Dimensions
Installation Accessories
Surface Installation
Wall Mount Installation
Maintenance / Support

Pg.2
Pg.3
Pg.4/6
Pg.7/9
Pg.10

Packaging Contents / Dimensions

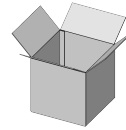


DRIVER
ESSV040W-0900-42
INCLUDED



FEBO EVO Fixture 1ea.

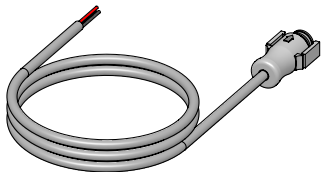
- FE** — Ferrite Grey **HB** — Heritage Brown
- BZ** — Bronze RAL8019 **WT** — White Textured
- BT** — Black Textured **SG** — Sandstone Grey



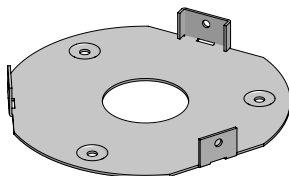
Box 7"x7"x8" @5.5lbs



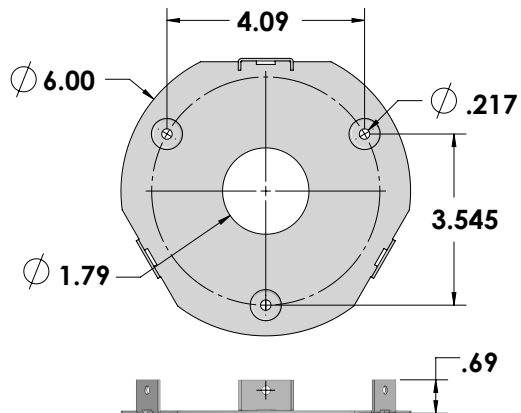
TOOL03
Tool Torx TX20 Anti Theft 1ea.



Standard 4ft Lead Cable 1ea.
Cabled with Belden 16-6 600V
cable and female IP68 anti-
wicking quick disconnect.



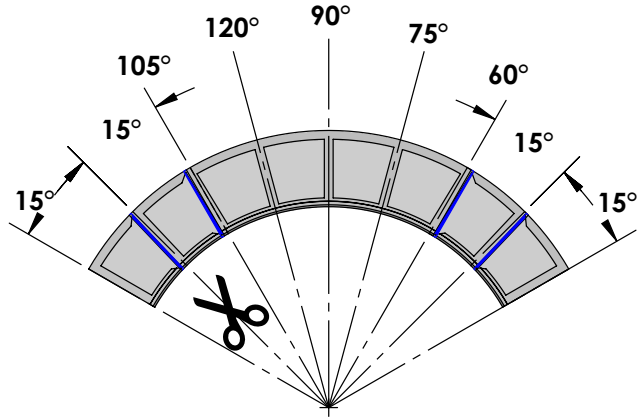
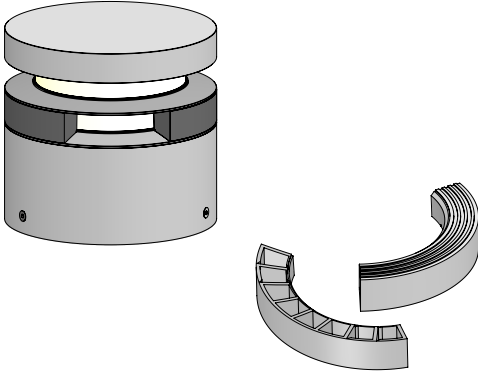
Stainless Steel Mounting Base
1 ea. (attached onto fixture)



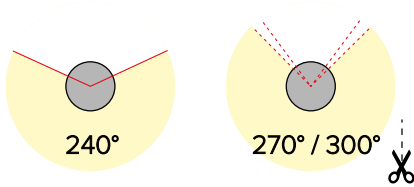
Installation Accessories

OPTICAL ACCESSORIES

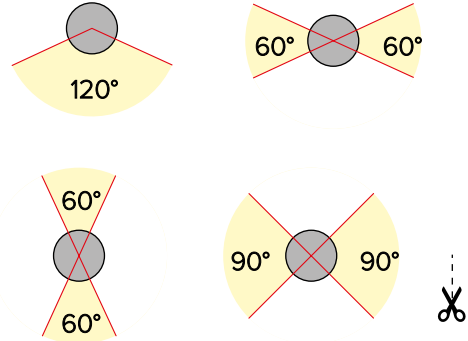
1E3399 120° shutter kit (with 4 cut zones that allow to shutter even 105°/90°/75°/60° angles). Sold in pairs.
Max of two kits to be used per fixture.



Achievable Optics with (1) 1E3399 Kit

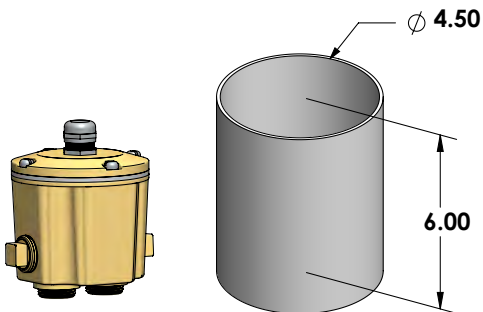


Achievable Optics with (2) 1E3399 Kits



INSTALLATION ACCESSORIES

1US2530 Direct burial brass ingrade j-box. Features stainless steel cover screws and strain relief for power cord, (2) 3/4" NPT bottom holes and (2) 3/4" NPT side holes. Includes (4) 3/4" to 1/2" adaptors and (2) 1/2" NPT plugs. PVC sleeve included, 6"H. **(REQUIRED by NEC for bollard configuration, one per fixture)**

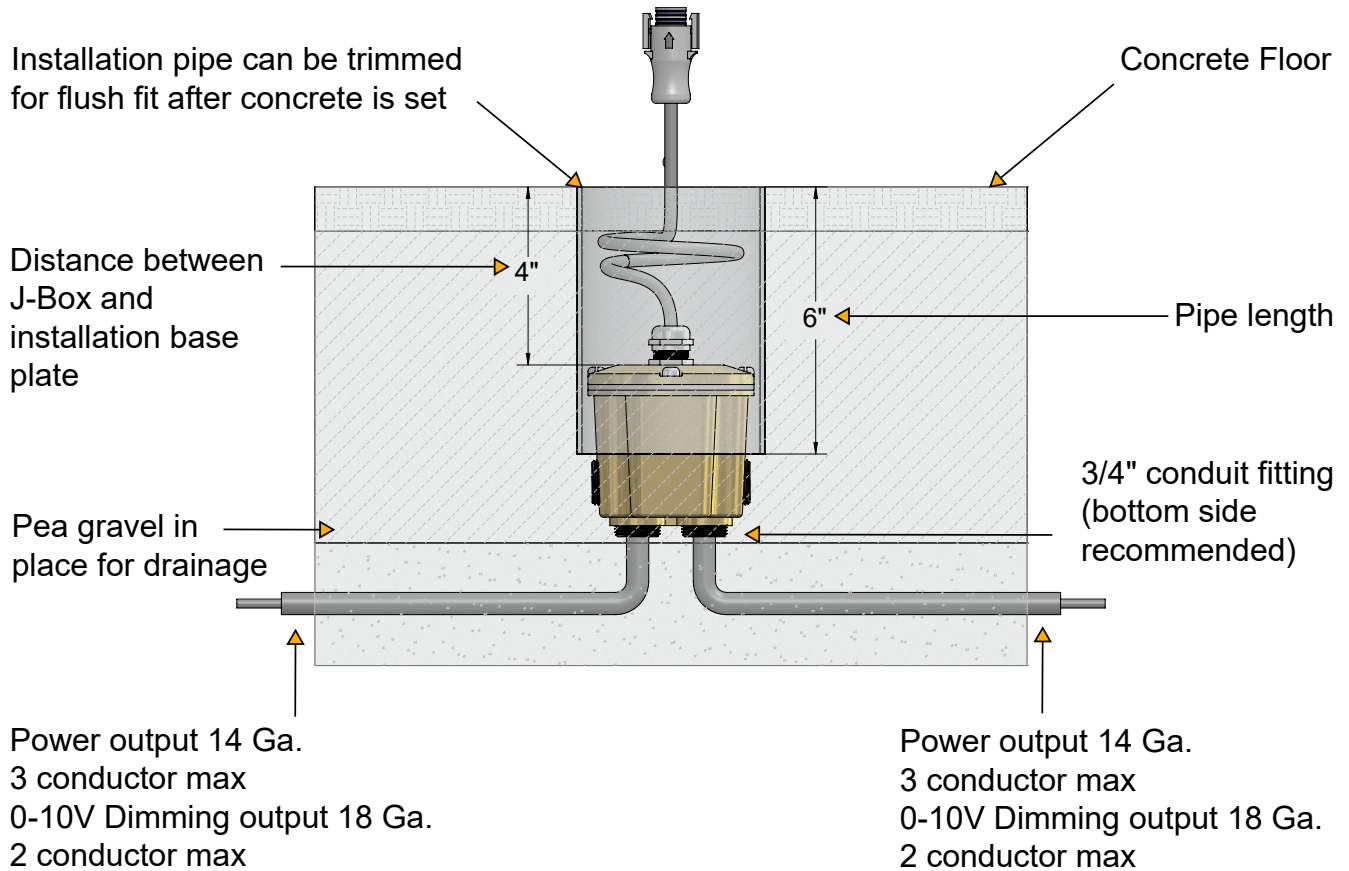


Installation Instructions

Surface Installation

The Febo Evo Bollard requires to have 1 ea. UL listed waterproof J-Box below it. Installer must identify the position of each Febo Evo LED fixture and install the J-Box as centered as possible and at a maximum depth of 9 inches.

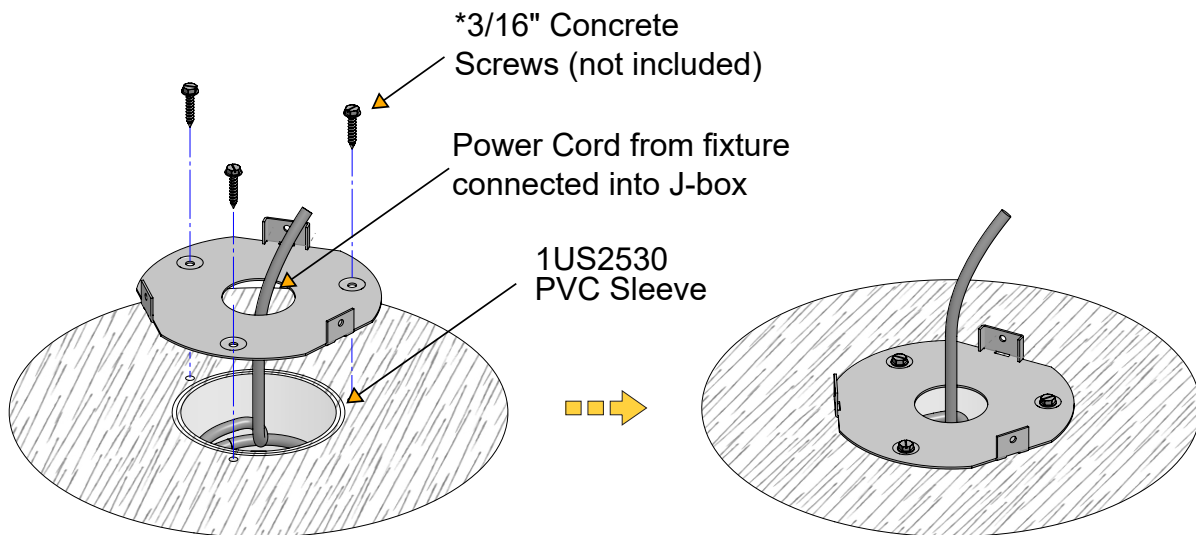
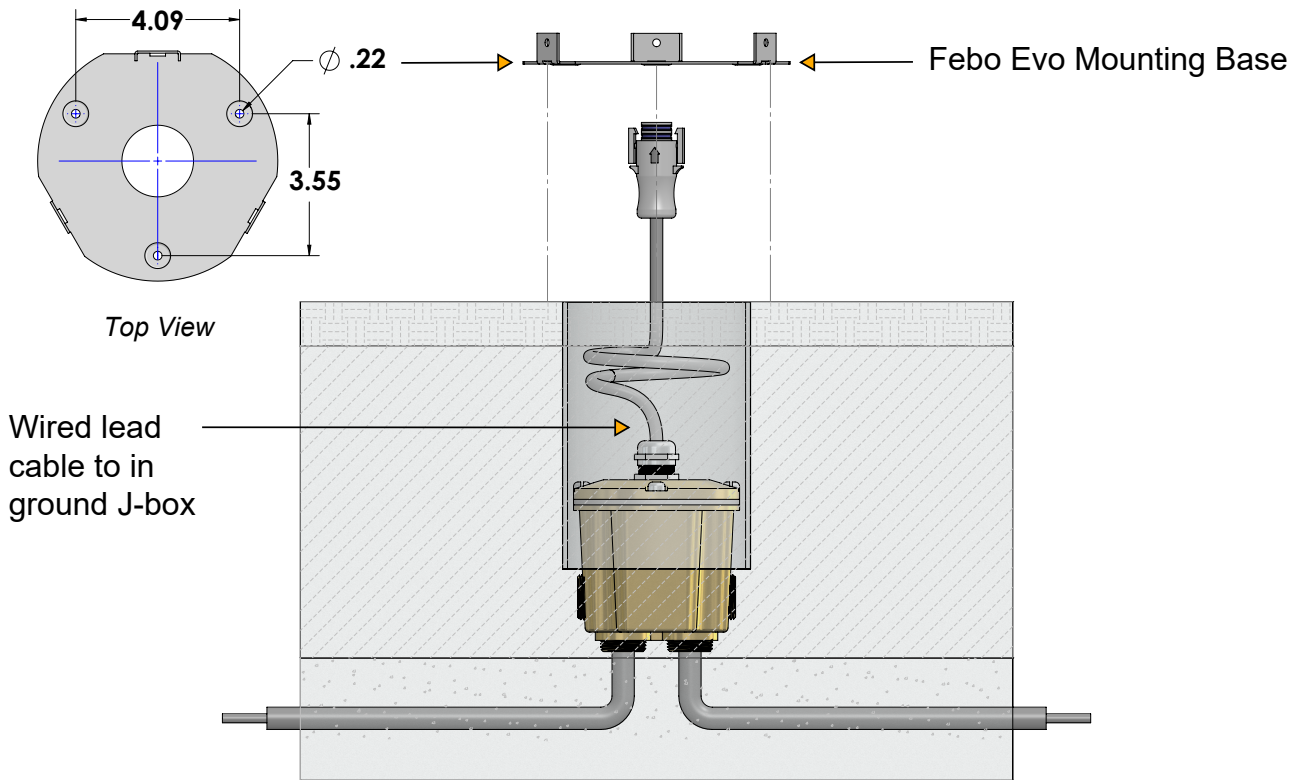
The UL listed waterproof J-Box must be installed in the correct location by the installer, for proper final positioning of the Febo Evo fixtures. J-Box installation, conduit installation and Line voltage conductors should comply with NEC and local building codes.



Installation Instructions

Surface Installation

The Febo Evo Bollard must be installed in the correct location by the installer, granted that the installer complies with NEC and local building codes. Please follow these 3 easy steps for a successful installation.

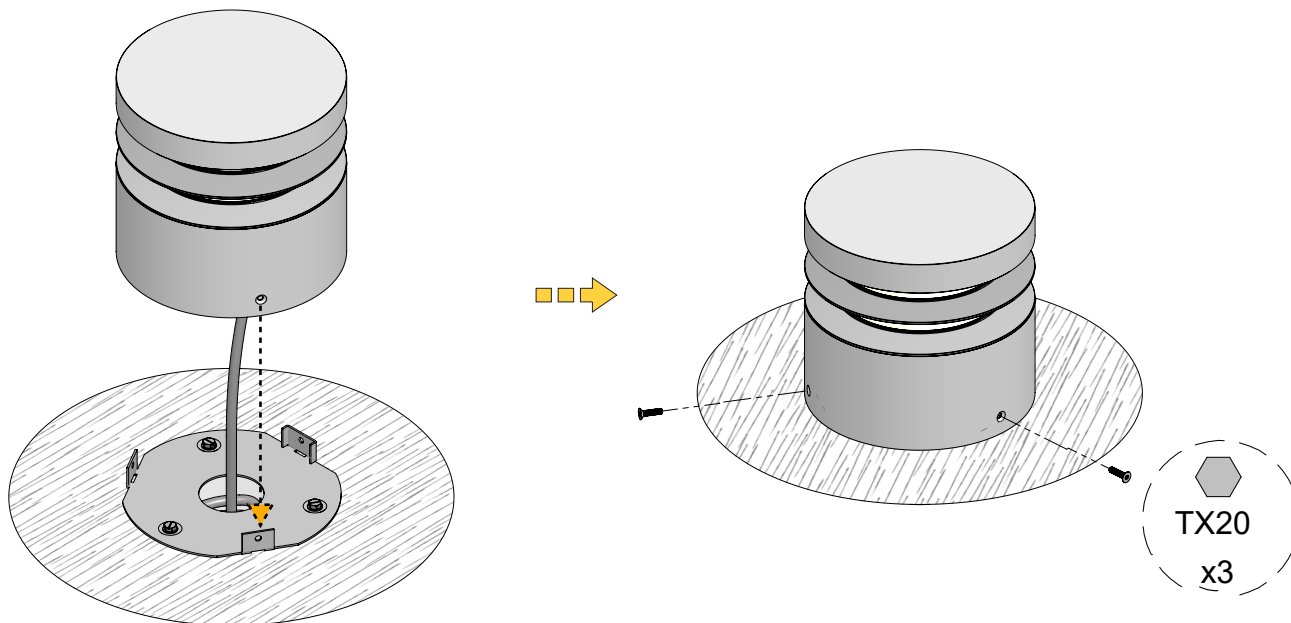


Mounting the base on the concrete floor.

NOTE: Install according to local and NEC building codes.

Installation Instructions

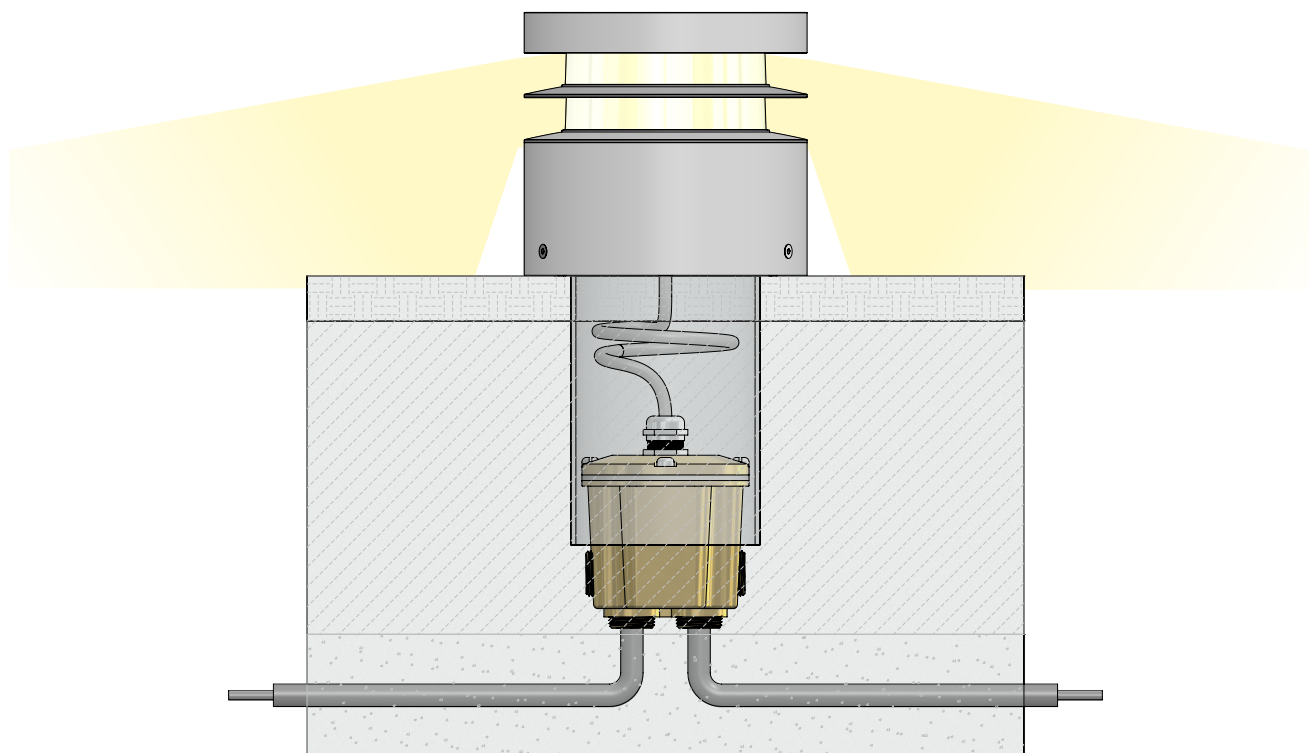
Surface Installation



Once mounting based is secure on the floor, the LED fixture can be mounted. Simply insert the body and fixture head into the base, turn the body on the direction required to align the holes on the same direction as the holes on the base where screws will be inserted.

Once aligned, insert the 3 TX20 screws into the holes to secure fixture onto position and tighten.

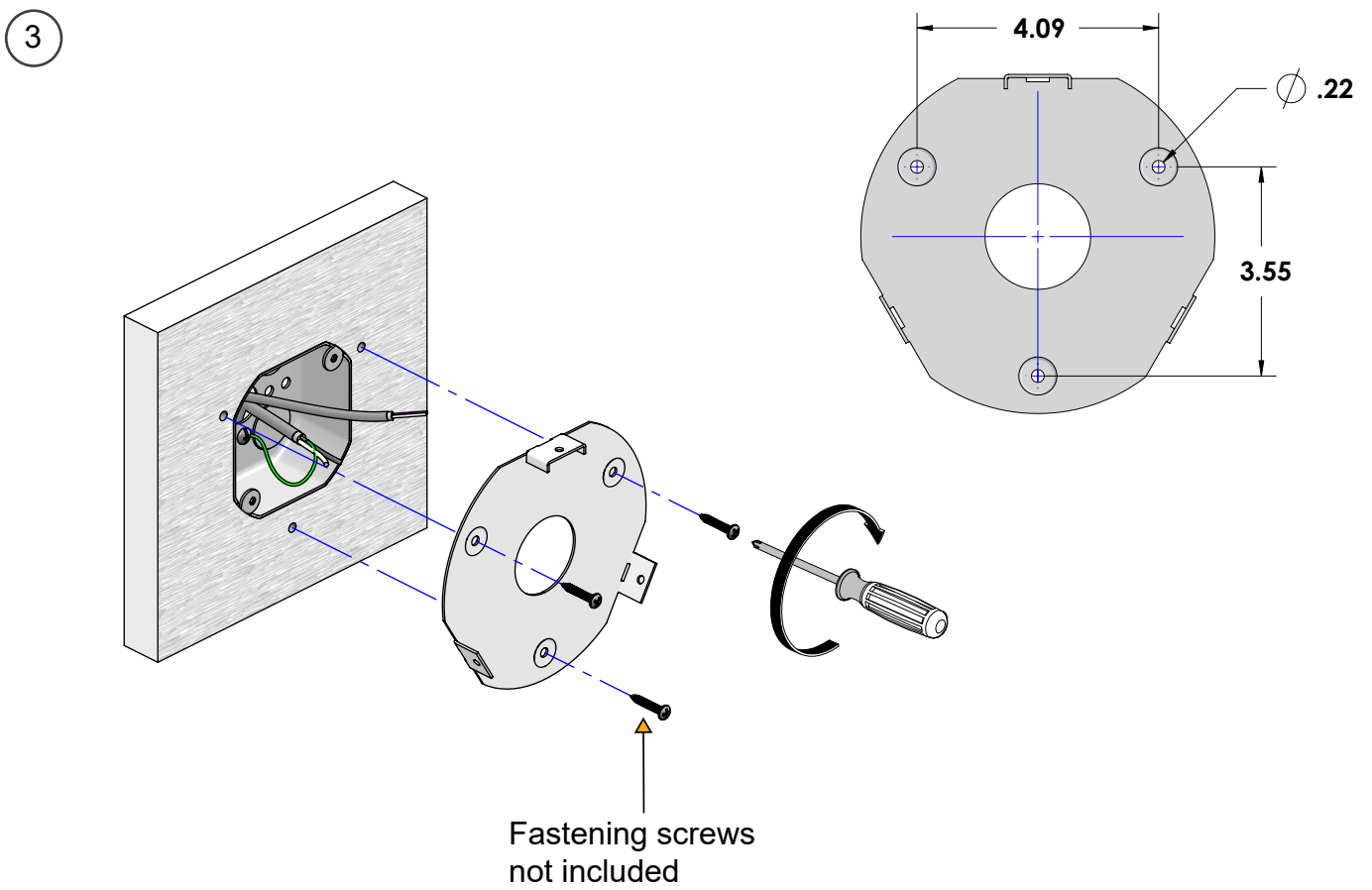
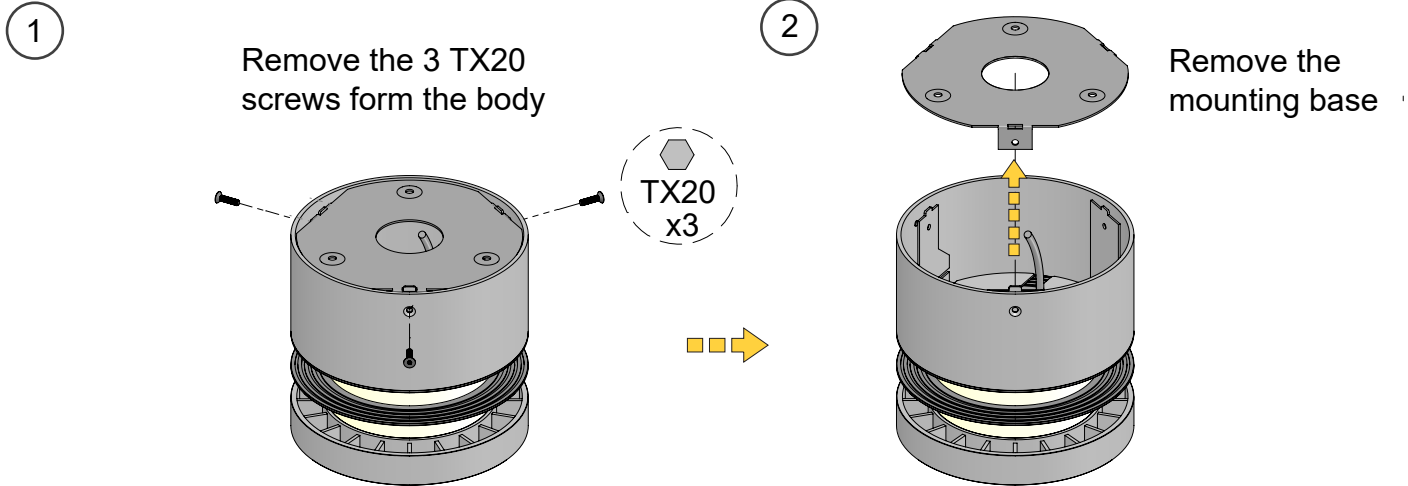
Finished Installation



Installation Instructions

Wall Mount Installation

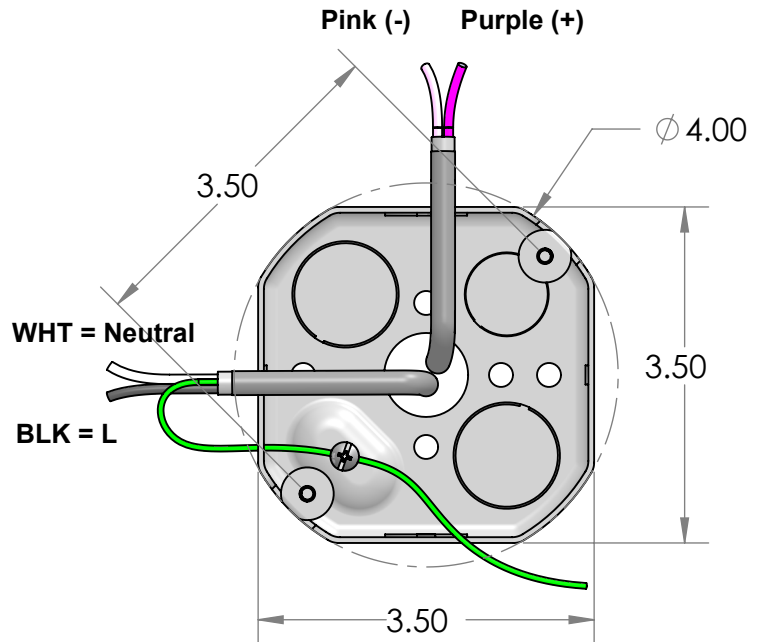
The Febo Evo Wall must be installed in the correct location by the installer, granted that the installer complies with NEC and local building codes. Please follow these 6 easy steps for a successful installation.



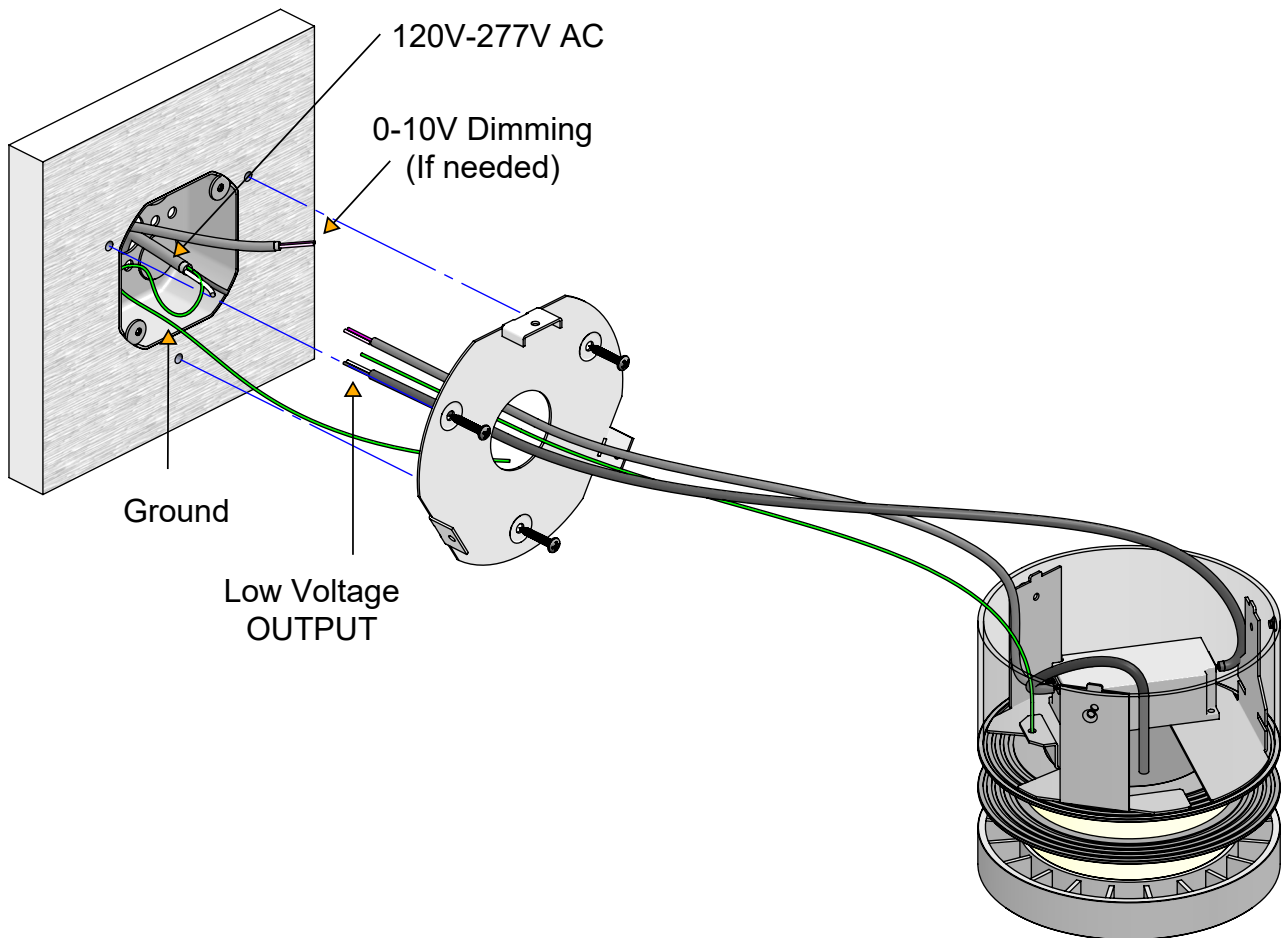
Installation Instructions

Wall Mount Installation

Recommended Octagon Deep J-Box
(Supply by Other)



4

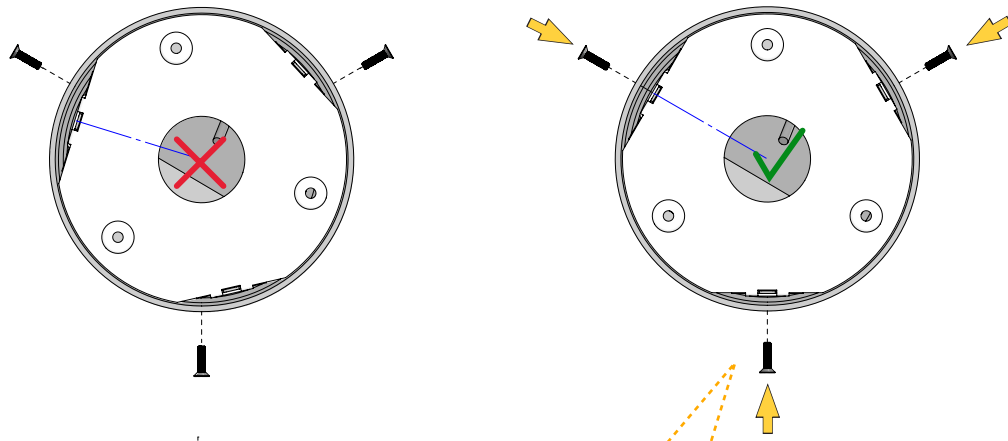
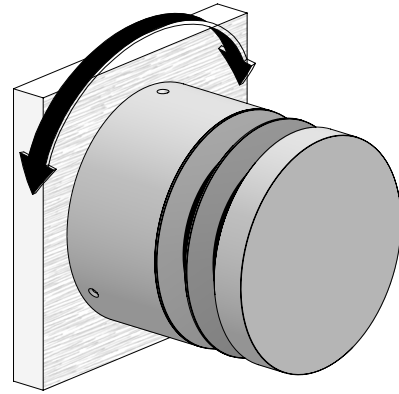


Installation Instructions

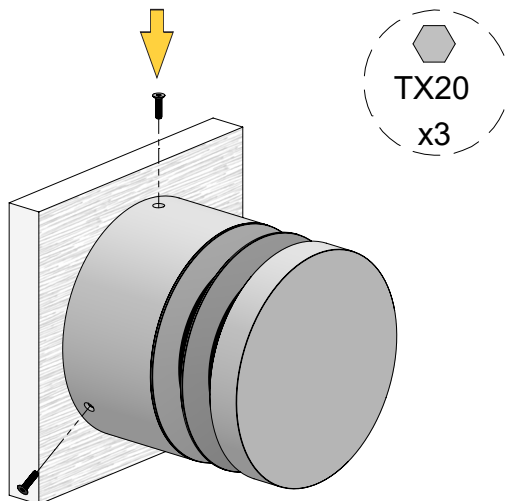
Wall Mount Installation

5

Insert the body and fixture head into the base, turn the body on the direction required to align the holes on the same direction as the holes on the base where screws will be inserted



6



Align and insert the 3 screws into the holes to secure fixture onto position and tighten

Maintenance

This fixture was designed and manufactured for a durable, long lasting use with minimum care. To ensure the maximum lifespan of this product, we encourage our customers to provide a quality visual inspection of the fixture and installation accessories every six months. If there are any visible signs of issues (i.e moisture or dust) during the inspection, please clean any of the dust or moisture with a soft cloth and check to make sure that any of the fixtures are still operating normally. If there are any issues regarding the fixture please contact us as we will assist the situation at hand.

Support

Any questions, problems, or comments you have please feel free to contact our Customer Service department during our business hours Monday-Friday 8am-5pm via: Email: usaorders@targetti.com
Phone: (714) 513-1991

Visit our website: <http://www.targettiusa.com>