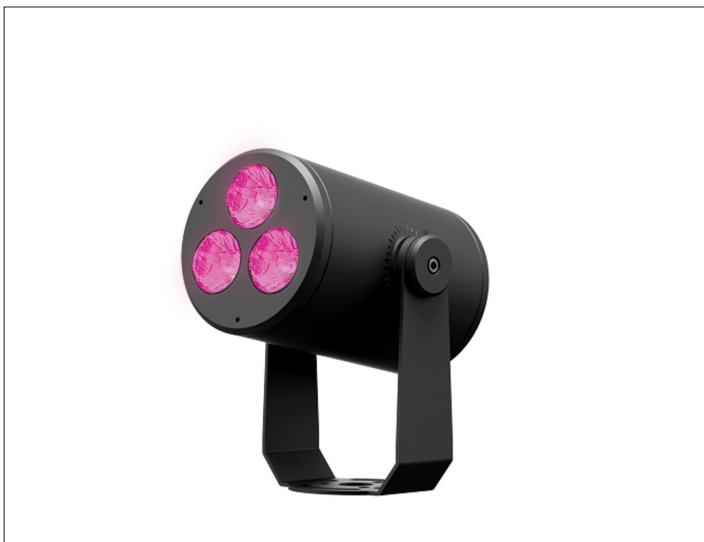
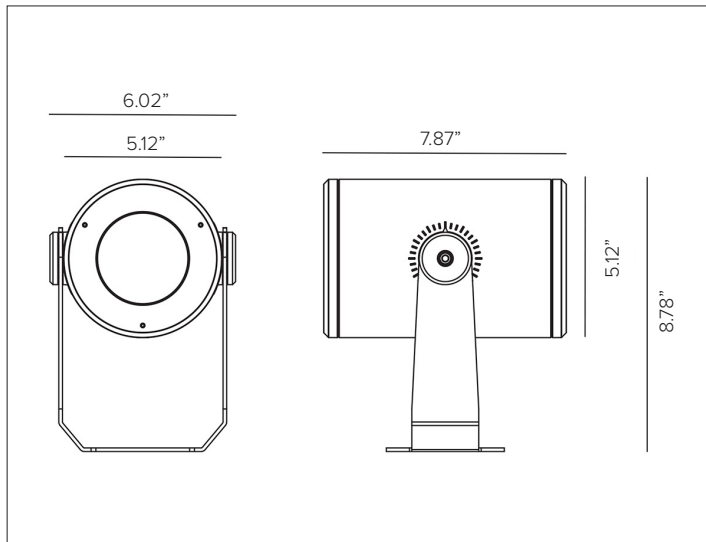


# DART ROUND MEDIUM RGBW

## Professional Adjustable Dynamic Color Changing Projector Floodlight



DART MEDIUM ROUND RGBW shown in Ferrite Dark Grey finish.



### CONCEPT

Small footprint fully adjustable LED projector with high intensity RGBW LED's for dynamic color changing illumination.

### MECHANICAL CHARACTERISTICS

<b>Housing</b>	8.78"H x 6.02"W x 7.87"D
<b>Materials</b>	Die-cast aluminum powder coated body and joints for maximum heat dissipation. Marine Grade cataphoresis <sup>A</sup> available as optional.
<b>Finish</b>	Textured finish. ● Ferrite Dark Grey   ● Heritage Brown   ● Bronze ● Black   ● White   ● Sandstone Grey
<b>Power Connection</b>	Cabled with (2ea) 6"L direct burial 18-3 line voltage and 20-3 DMX cables with IP68 quick disconnects. Lead cables available in 10ft / 25ft / 50ft lengths, see required options.
<b>Functionality</b>	Adjustable up to ±60° on the horizontal plane with slotted mounting base and +90°/-45° on the vertical plane with aim locking set screw.
<b>Mounting</b>	Fixture can be installed directly to mounting surface or used with optional mounting installation accessories.
<b>Weight</b>	7lbs
<b>Protection</b>	IP66
<b>Impact</b>	IK10

### CERTIFICATIONS

cULus Wet Location Listed.  
 Tested in accordance with LM-79-08.  
 Compliant with California energy regulations.  
 IEC 62471.  
 RoHS3 EU 215/863

### WARRANTY

5 year limited fixture warranty. 3 year limited field replaceable driver warranty.

### SUSTAINABILITY

Luminaire designed for disposal/recycling at end-of-life. Replaceable LED light source and control gear by a Targetti technician.

### ELECTRICAL CHARACTERISTICS

<b>Power Supply</b>	Integral electronic driver, DMX 512 protocol. 0% dim range. Refer to Targetti <a href="#">Onsite Services</a> for additional programming and installation support.
<b>Wattage</b>	34W / 4Ch
<b>Voltage</b>	Universal Voltage 120-277V AC 50/60Hz

### SOURCE

High efficiency 3ea quad chip LED's.

TM30	CCT (Nominal)	SDCM
	RGBW 6500K	2

### OPTIC

Metalized polycarbonate reflector and holographic PMMA diffusion filter.

Beam	NSP 10°	SP 16°	FL 29°	MWFL 40°
<b>Delivered Lumens</b>	<b>RED</b> 257Lm	229Lm	219Lm	216Lm
	<b>GREEN</b> 463Lm	412Lm	395Lm	389Lm
	<b>BLUE</b> 90Lm	81Lm	77Lm	76Lm
	<b>5500K</b> 694Lm	619Lm	593Lm	584Lm
	<b>RGB</b> 657Lm	586Lm	561Lm	552Lm
	<b>RGBW</b> 1265Lm	1128Lm	1080Lm	1063Lm
<b>Efficacy</b>	77Lm/W max. Refer to photometric graphs for specific values.			
<b>Lifetime</b>	L80/B10 60,000hrs at max TA +25°C <small>Driver life ratings are based on 70% of all channel full intensity. Programming of lower or higher intensity loads will affect life rating.</small>			
<b>Photobiological Classification</b>	Low risk safety RG1			

# DART ROUND MEDIUM RGBW

## SPECIFICATION INFORMATION



Ex: DRMDXFELISPRGBW / DX8PLEAD10 / PS040

1 - PRODUCT CODE	2 - CONTROL	3 - FINISH	4 - WATTAGE	5 - OPTIC	6 - KELVIN	7 - LEAD CABLE
<b>DRM</b> — DART ROUND MEDIUM	<b>DX</b> — DMX	<b>FE</b> — Ferrite Dark Grey <b>HB</b> — Heritage Brown <b>BZ</b> — Bronze <b>WT</b> — White Textured <b>BT</b> — Black Textured <b>SG</b> — Sandstone Grey <b>RAL</b> — <a href="#">Custom RAL</a>	<b>L1</b> — 34W	<b>NS</b> — NS 10° <b>SP</b> — SP 16° <b>FL</b> — FL 29° <b>MW</b> — MWFL 40°	<b>RGBW</b> — RGBW	<a href="#">Lead Cable</a> See section for details
8 - OPTIONAL	9 - CONTROL	10 - OPTICAL ACCESSORIES	11 - INSTALLATION ACCESSORIES			
<b>MG<sup>A</sup></b> — Marine Grade	<a href="#">DMX Controller</a> See section for details	<a href="#">Filter Holder Ring</a> See section for details <a href="#">Blade Light Linear Spread Lens</a> See section for details <a href="#">Anti-glare Louver</a> See section for details <a href="#">Asymmetric Snoot</a> See section for details	<a href="#">Rotational Bracket</a> See section for details <a href="#">Earth spike</a> See section for details <a href="#">Back Plate</a> See section for details			

<sup>A</sup> Marine Grade is recommended for use in environments with occasional exposure to salt air, reclaimed water, fertilizers, chemical cleaners, or frequent pressure washing (steam) cleaning. Fixture housing complete with marine grade cathaphoresis suitable for use in marine grade environments. Not to be in direct contact with salt or corrosive agents for extended periods of time.

# DART ROUND MEDIUM RGBW




## 7 - LEAD CABLE (REQUIRED)



Lead cable kit. (2ea) direct burial 18-3 line voltage and 20-3 DMX cables with IP68 quick disconnects.

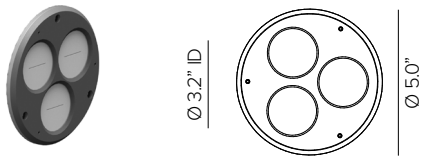
Length	10ft	25ft	50ft
Part No.	<b>DRMDXLEAD10</b>	<b>DRMDXLEAD25</b>	<b>DRMDXLEAD50</b>

## 9 – CONTROL (OPTIONAL)

Part No.		Channels	Scenes	Zones	Rating	Voltage	Certification	Dimensions	Description
<b>TGDMXSLES9</b>		256	20	1	Indoor	5.5VDC	ETL, UL	5.3"W x 5.5"H x 1.9D	Nicolaudie Slesa smart DMX 1/2 universe programmable controller with easy to use software interface.
<b>TGDMXSLES11</b>		1024	5	99	Indoor	5VDC 120V AC <i>Plug in power supply included</i>	ETL	6.3" x 3.6" x 1.8"	Nicolaudie Slesa smart DMX interface, 2 DMX 512 universes, intuitive backlit keyboard programmable controller with easy to use software interface.
<b>TGDMXSTICKDE3B</b>		1024	10	500	Indoor	6-7V DC 120V AC <i>Plug in power supply included</i>	ETL	5.8" x 4.2" x 0.5"	Nicolaudie intelligent control keypad with glass touch sensitive graphic display, stand-alone DMX 512, 2 universe programmable controller with easy to use software interface. Black finish.
<b>TGDMXSTICKDE3W</b>		1024	10	500	Indoor	6-7V DC 120V AC <i>Plug in power supply included</i>	ETL	5.8" x 4.2" x 0.5"	Nicolaudie intelligent control keypad with glass touch sensitive graphic display, stand-alone DMX 512, 2 universe programmable controller with easy to use software interface. White finish.

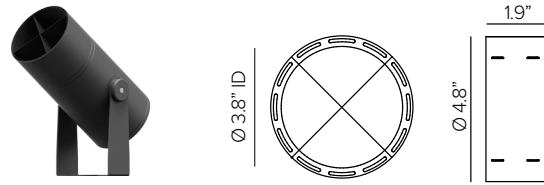
# DART ROUND MEDIUM RGBW

## 10 – EXTERNAL OPTICAL ACCESSORIES (OPTIONAL)



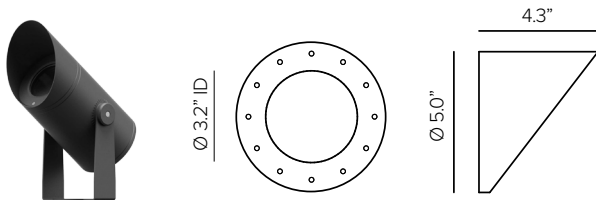
Blade Light Linear Spread Lens. PMMA holographic filter.

Part No. **1E4263 (\*)**



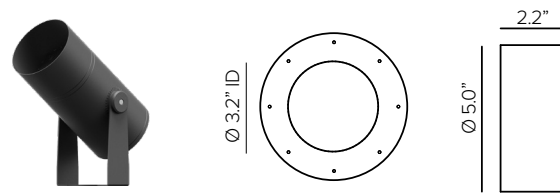
Anti glare louver with removable baffles for different levels of glare control. Powder coat stainless steel. Cutoff 114°. **Not compatible with 1E4007, 1E4008 or 1E4058.**

Part No. **1E4009 (\*)**



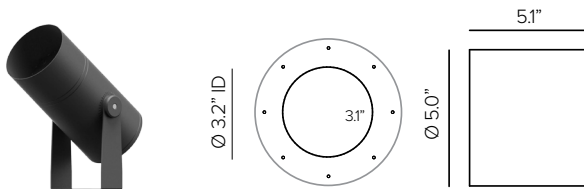
Asymmetric snoot. Powder coated stainless steel. Cutoff 52°. **Not compatible with 1E4009, 1E4008 or 1E4058.**

Part No. **1E4007 (\*)**



Symmetric snoot. Powder coated stainless steel. Cutoff 102°. **Not compatible with 1E4007, 1E4009 or 1E4058.**

Part No. **1E4008 (\*)**



Symmetric super snoot. Powder coated stainless steel. Cutoff 44°. **Not compatible with 1E4007, 1E4008 or 1E4009.**

Part No. **1E4058 (\*)**

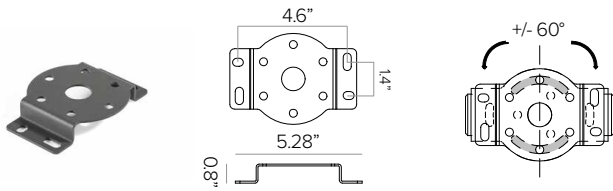
- Ferrite Dark Grey (Default)
- Heritage Brown (HB)\*
- Bronze (BZ)\*
- White (WT)\*
- Black (BT)\*
- Sandstone Grey (SG)\*

**\*Add suffix to end of number to identify finish (EX. 1E4006HB)**

# DART ROUND MEDIUM RGBW

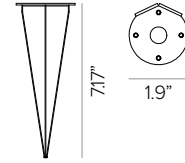
## 11 – INSTALLATION ACCESSORIES (OPTIONAL)

MAXIMUM OF ONE ACCESSORY PER FIXTURE



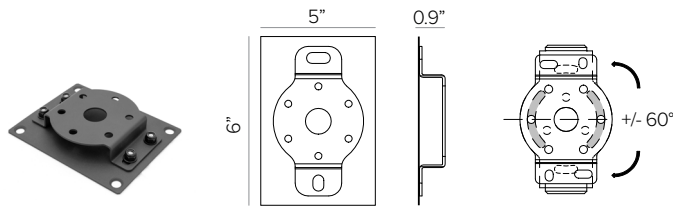
Rotational bracket for surface installation. Powder coated stainless steel.

Part No. **1E3026** (\*)



Earth spike. Powder coated stainless steel.

Part No. **1E3028** (\*)



Back plate with rotational bracket for wall mount installation. Powder coated stainless steel with Neoprene black foam. Included with 1E3026 and factory attached Stainless Steel black oxide bolts and locking nuts.

Part No. **1US3026** (\*)

- Ferrite Dark Grey (*Default*)
- Heritage Brown (**HB**)\*
- Bronze (**BZ**)\*
- White (**WT**)\*
- Black (**BT**)\*
- Sandstone Grey (**SG**)\*

\*Add suffix to end of number to identify finish (EX. **1E3026HB**)

# DART ROUND MEDIUM RGBW

## PHOTOMETRY

### NARROW SPOT

		RED	H(m)	D(m)	Emax(lx)
		-		10°	
Fixture Power	7W	1	0.17	7360	
Source Flux	318lm	2	0.34	1840	
Fixture Flux	257lm	3	0.50	818	
Efficacy	39lm/W	4	0.67	460	
TS1673	I <sub>max</sub> =23144cd/klm	I <sub>max</sub>	7360cd	5	0.84

		GREEN	H(m)	D(m)	Emax(lx)
		-		10°	
Fixture Power	10W	1	0.17	13261	
Source Flux	573lm	2	0.34	3315	
Fixture Flux	463lm	3	0.50	1473	
Efficacy	46lm/W	4	0.67	829	
TS1673	I <sub>max</sub> =23144cd/klm	I <sub>max</sub>	13261cd	5	0.84

		BLUE	H(m)	D(m)	Emax(lx)
		-		10°	
Fixture Power	9W	1	0.17	2592	
Source Flux	112lm	2	0.34	648	
Fixture Flux	90lm	3	0.50	288	
Efficacy	10lm/W	4	0.67	162	
TS1673	I <sub>max</sub> =23144cd/klm	I <sub>max</sub>	2592cd	5	0.84

		6500K	H(m)	D(m)	Emax(lx)
		-		10°	
Fixture Power	9W	1	0.17	19904	
Source Flux	860lm	2	0.34	4976	
Fixture Flux	694lm	3	0.50	2212	
Efficacy	81lm/W	4	0.67	1244	
TS1673	I <sub>max</sub> =23144cd/klm	I <sub>max</sub>	19904cd	5	0.84

		RGB	H(m)	D(m)	Emax(lx)
		-		10°	
Fixture Power	25W	1	0.17	18839	
Source Flux	814lm	2	0.34	4710	
Fixture Flux	657lm	3	0.50	2093	
Efficacy	26lm/W	4	0.67	1177	
TS1673	I <sub>max</sub> =23144cd/klm	I <sub>max</sub>	18839cd	5	0.84

		RGBW	H(m)	D(m)	Emax(lx)
		-		10°	
Fixture Power	33W	1	0.17	36267	
Source Flux	1567lm	2	0.34	9067	
Fixture Flux	1265lm	3	0.50	4030	
Efficacy	39lm/W	4	0.67	2267	
TS1673	I <sub>max</sub> =23144cd/klm	I <sub>max</sub>	36267cd	5	0.84

# DART ROUND MEDIUM RGBW

## PHOTOMETRY

### SPOT

		RED	H(m)	D(m)	Emax(lx)	
		-		16°		
Fixture Power	7W	1	0.29	2365		
Source Flux	318lm	2	0.57	591		
Fixture Flux	229lm	3	0.86	263		
Efficacy	35lm/W	4	1.14	148		
TS1674	I <sub>max</sub> =7436cd/klm	I <sub>max</sub>	2365cd	5	1.43	95



		GREEN	H(m)	D(m)	Emax(lx)	
		-		16°		
Fixture Power	10W	1	0.29	4261		
Source Flux	573lm	2	0.57	1065		
Fixture Flux	412lm	3	0.86	473		
Efficacy	41lm/W	4	1.14	266		
TS1674	I <sub>max</sub> =7436cd/klm	I <sub>max</sub>	4261cd	5	1.43	170



		BLUE	H(m)	D(m)	Emax(lx)	
		-		16°		
Fixture Power	9W	1	0.29	833		
Source Flux	112lm	2	0.57	208		
Fixture Flux	81lm	3	0.86	93		
Efficacy	9lm/W	4	1.14	52		
TS1674	I <sub>max</sub> =7436cd/klm	I <sub>max</sub>	833cd	5	1.43	33



		6500K	H(m)	D(m)	Emax(lx)	
		-		16°		
Fixture Power	9W	1	0.29	6395		
Source Flux	860lm	2	0.57	1599		
Fixture Flux	619lm	3	0.86	711		
Efficacy	72lm/W	4	1.14	400		
TS1674	I <sub>max</sub> =7436cd/klm	I <sub>max</sub>	6395cd	5	1.43	256



		RGB	H(m)	D(m)	Emax(lx)	
		-		16°		
Fixture Power	25W	1	0.29	6053		
Source Flux	814lm	2	0.57	1513		
Fixture Flux	586lm	3	0.86	673		
Efficacy	24lm/W	4	1.14	378		
TS1674	I <sub>max</sub> =7436cd/klm	I <sub>max</sub>	6053cd	5	1.43	242



		RGBW	H(m)	D(m)	Emax(lx)	
		-		16°		
Fixture Power	33W	1	0.29	11653		
Source Flux	1567lm	2	0.57	2913		
Fixture Flux	1128lm	3	0.86	1295		
Efficacy	34lm/W	4	1.14	728		
TS1674	I <sub>max</sub> =7436cd/klm	I <sub>max</sub>	11653cd	5	1.43	466

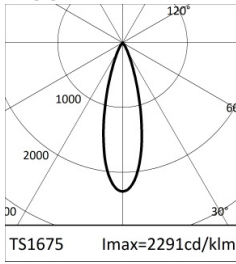


# DART ROUND MEDIUM RGBW

## PHOTOMETRY

### FLOOD

		RED	H(m)	D(m)	Emax(lx)	
		-		29°		
Fixture Power	7W	1	0.51	729		
Source Flux	318lm	2	1.02	182		
Fixture Flux	219lm	3	1.53	81		
Efficacy	34lm/W	4	2.04	46		
TS1675	Imax=2291cd/klm	Imax	729cd	5	2.55	29



		GREEN	H(m)	D(m)	Emax(lx)	
		-		29°		
Fixture Power	10W	1	0.51	1313		
Source Flux	573lm	2	1.02	328		
Fixture Flux	395lm	3	1.53	146		
Efficacy	39lm/W	4	2.04	82		
TS1675	Imax=2291cd/klm	Imax	1313cd	5	2.55	53



		BLUE	H(m)	D(m)	Emax(lx)	
		-		29°		
Fixture Power	9W	1	0.51	257		
Source Flux	112lm	2	1.02	64		
Fixture Flux	77lm	3	1.53	29		
Efficacy	9lm/W	4	2.04	16		
TS1675	Imax=2291cd/klm	Imax	257cd	5	2.55	10



		6500K	H(m)	D(m)	Emax(lx)	
		-		29°		
Fixture Power	9W	1	0.51	1970		
Source Flux	860lm	2	1.02	493		
Fixture Flux	593lm	3	1.53	219		
Efficacy	69lm/W	4	2.04	123		
TS1675	Imax=2291cd/klm	Imax	1970cd	5	2.55	79



		RGB	H(m)	D(m)	Emax(lx)	
		-		29°		
Fixture Power	25W	1	0.51	1865		
Source Flux	814lm	2	1.02	466		
Fixture Flux	561lm	3	1.53	207		
Efficacy	23lm/W	4	2.04	117		
TS1675	Imax=2291cd/klm	Imax	1865cd	5	2.55	75



		RGBW	H(m)	D(m)	Emax(lx)	
		-		29°		
Fixture Power	33W	1	0.51	3590		
Source Flux	1567lm	2	1.02	898		
Fixture Flux	1080lm	3	1.53	399		
Efficacy	33lm/W	4	2.04	224		
TS1675	Imax=2291cd/klm	Imax	3590cd	5	2.55	144

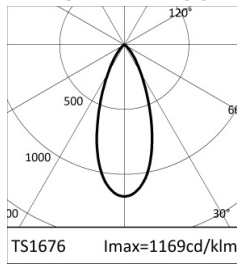




# DART ROUND MEDIUM RGBW

## PHOTOMETRY

### MEDIUM WIDE FLOOD



RED		H(m)	D(m)	Emax(lx)	
-			40°		
Fixture Power	7W	1	0.74	372	
Source Flux	318lm	2	1.48	93	
Fixture Flux	216lm	3	2.21	41	
Efficacy	33lm/W	4	2.95	23	
TS1676	I <sub>max</sub> =1169cd/klm	I <sub>max</sub>	372cd	5	3.69 15



GREEN		H(m)	D(m)	Emax(lx)	
-			40°		
Fixture Power	10W	1	0.74	670	
Source Flux	573lm	2	1.48	167	
Fixture Flux	389lm	3	2.21	74	
Efficacy	39lm/W	4	2.95	42	
TS1676	I <sub>max</sub> =1169cd/klm	I <sub>max</sub>	670cd	5	3.69 27



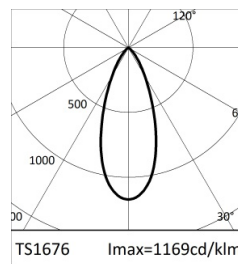
BLUE		H(m)	D(m)	Emax(lx)	
-			40°		
Fixture Power	9W	1	0.74	131	
Source Flux	112lm	2	1.48	33	
Fixture Flux	76lm	3	2.21	15	
Efficacy	9lm/W	4	2.95	8	
TS1676	I <sub>max</sub> =1169cd/klm	I <sub>max</sub>	131cd	5	3.69 5



6500K		H(m)	D(m)	Emax(lx)	
-			40°		
Fixture Power	9W	1	0.74	1005	
Source Flux	860lm	2	1.48	251	
Fixture Flux	584lm	3	2.21	112	
Efficacy	68lm/W	4	2.95	63	
TS1676	I <sub>max</sub> =1169cd/klm	I <sub>max</sub>	1005cd	5	3.69 40



RGB		H(m)	D(m)	Emax(lx)	
-			40°		
Fixture Power	25W	1	0.74	951	
Source Flux	814lm	2	1.48	238	
Fixture Flux	552lm	3	2.21	106	
Efficacy	22lm/W	4	2.95	59	
TS1676	I <sub>max</sub> =1169cd/klm	I <sub>max</sub>	951cd	5	3.69 38



RGBW		H(m)	D(m)	Emax(lx)	
-			40°		
Fixture Power	33W	1	0.74	1831	
Source Flux	1567lm	2	1.48	458	
Fixture Flux	1063lm	3	2.21	203	
Efficacy	32lm/W	4	2.95	114	
TS1676	I <sub>max</sub> =1169cd/klm	I <sub>max</sub>	1831cd	5	3.69 73