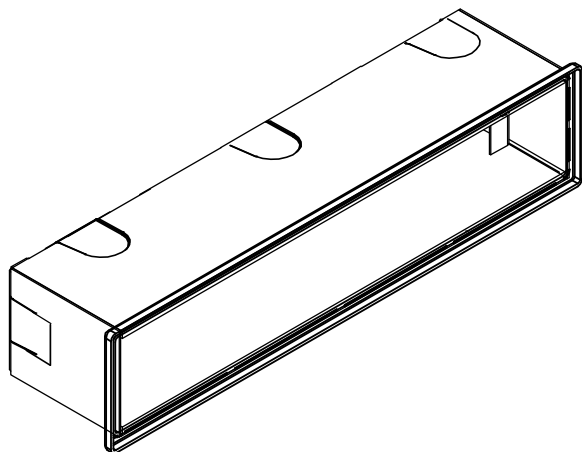




ZEDGE LINE

IE3447

ZEDGE LINE RECESSED INSTALLATION BOX BLACK PVC PLASTIC



If in doubt about the symbols refer to
catalog or website

WARNING

**To ensure a maximum efficient use
of the product, read the instructions
before proceeding installment.**



This fixture must be installed by a licensed and qualified electrician. The installer must comply with NEC and local building codes when installing the fixture



Electrical current can cause painful shock, serious injury, or even death. Make sure you turn off the power supply, ground fixture(s), and make sure all electrical connections are correct and secured tightly



IP66

For use in IP66 installations.



Keep the label of the original packaging if any eventual future claims are needed

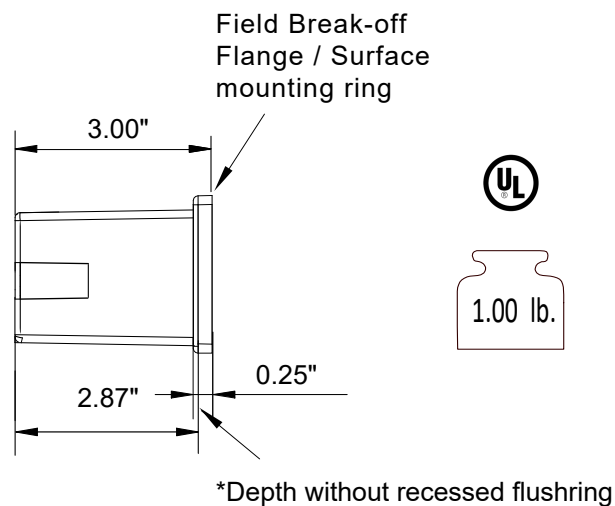
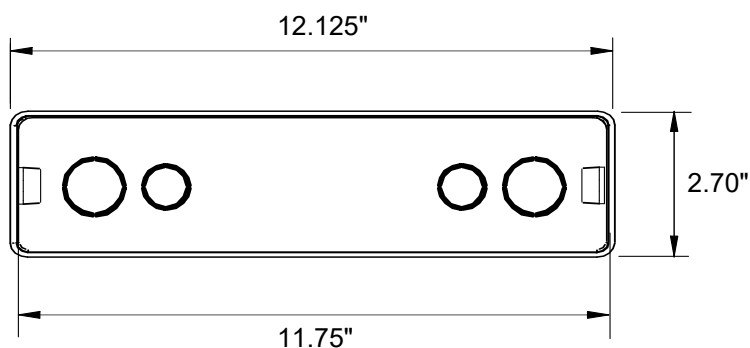
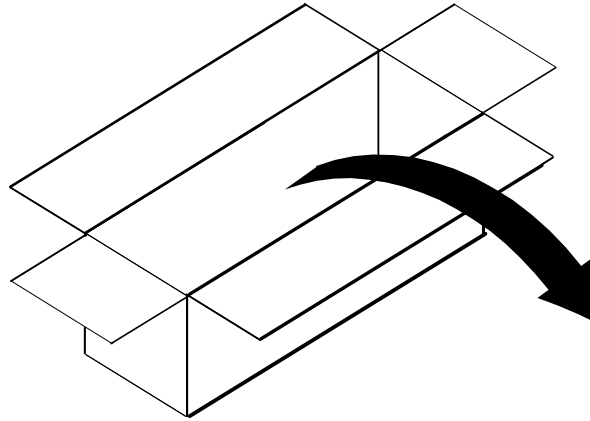


Table of Contents

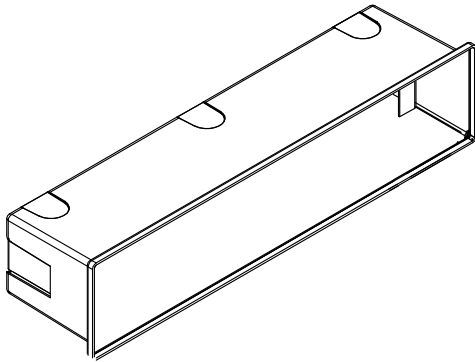
Packaging Contents / Knockout Size
Installation Type "A"
Installation Type "B"
Fixture Installation
Maintenance / Support

Pg.2
Pg.3
Pg.4
Pg.5
Pg.6

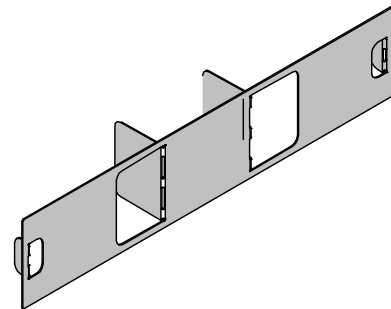
Packaging Contents



Box 14"x4"x3.5" @1.00 lbs.

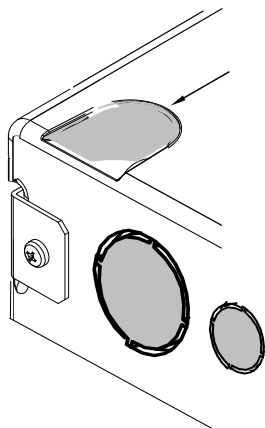


PVC Back Box 1 ea.

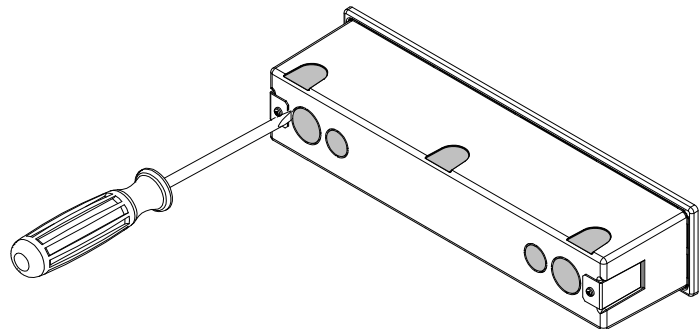


Galvanized Steel Cover / support
for concrete pouring 1 ea.

Knockout Size



Can be drilled out for 1/2" knockout if
backside knockouts are not accessible



Featuring:

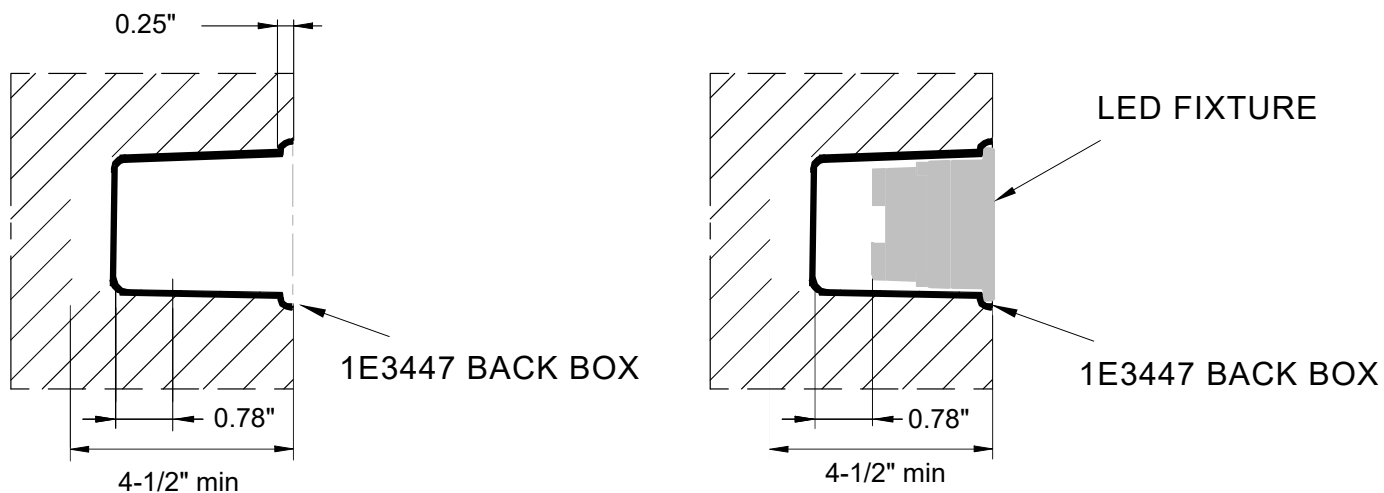
2 ea. 3/8" Knockouts and
2 ea. 3/4" Knockouts on back side for conduit

(Screw Driver Not Included)

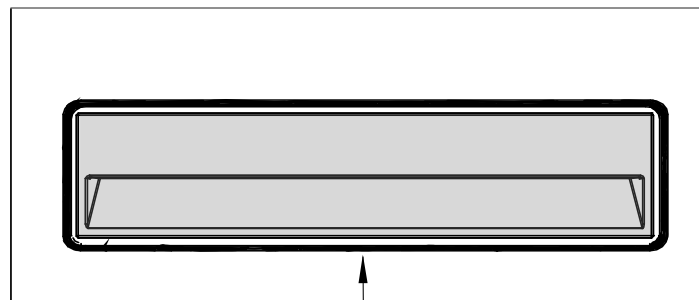
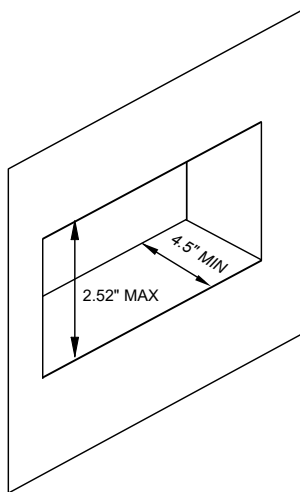
Pg.2

INSTALLATION TYPE "A" FLUSH MOUNTING

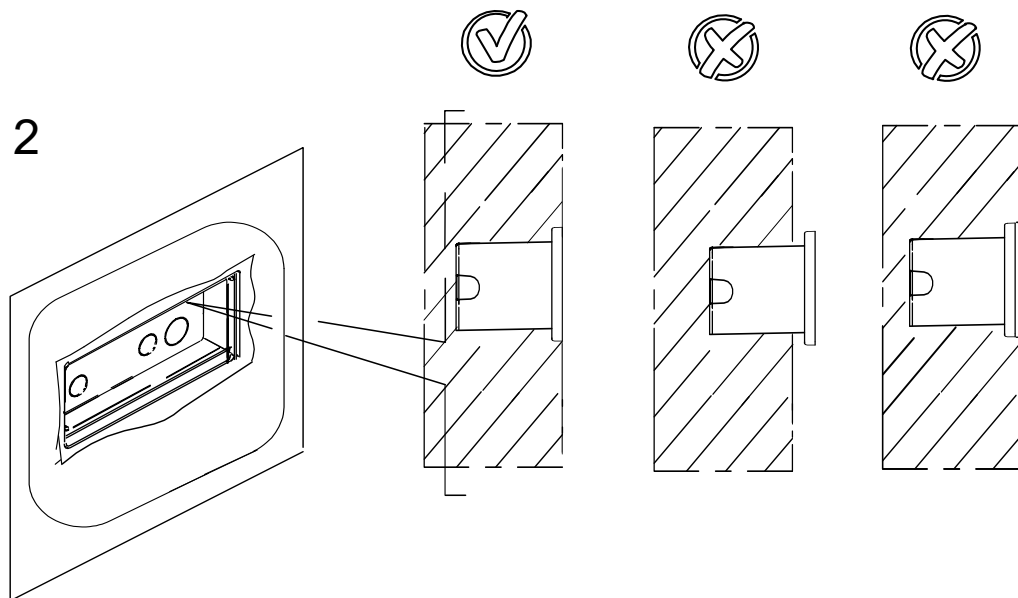
1E3447 Used with flush ring attached



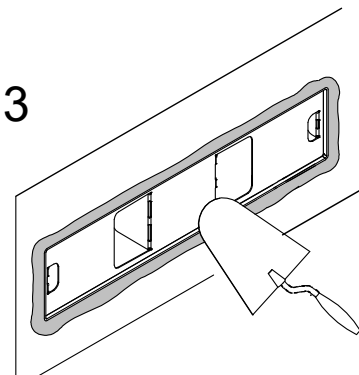
1



2

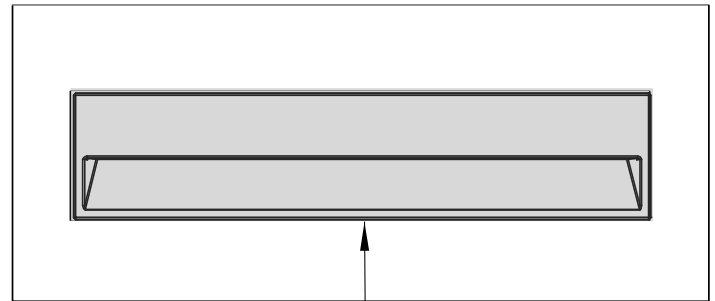
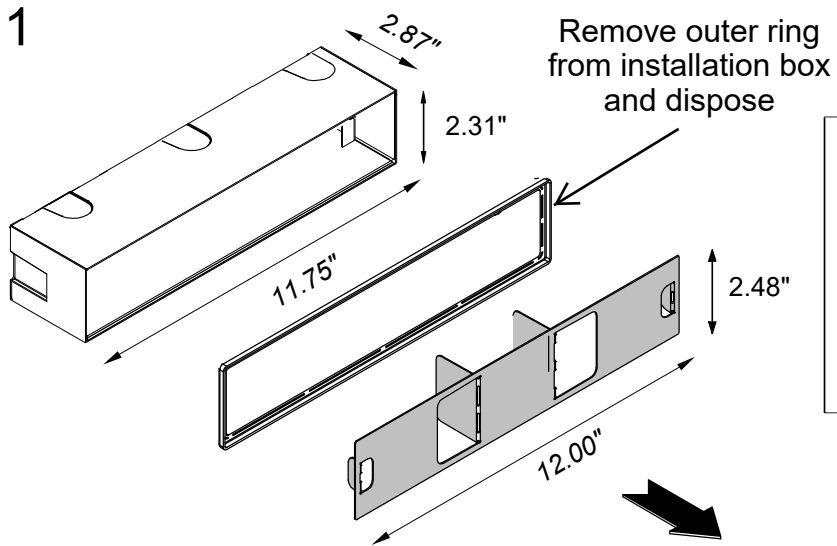
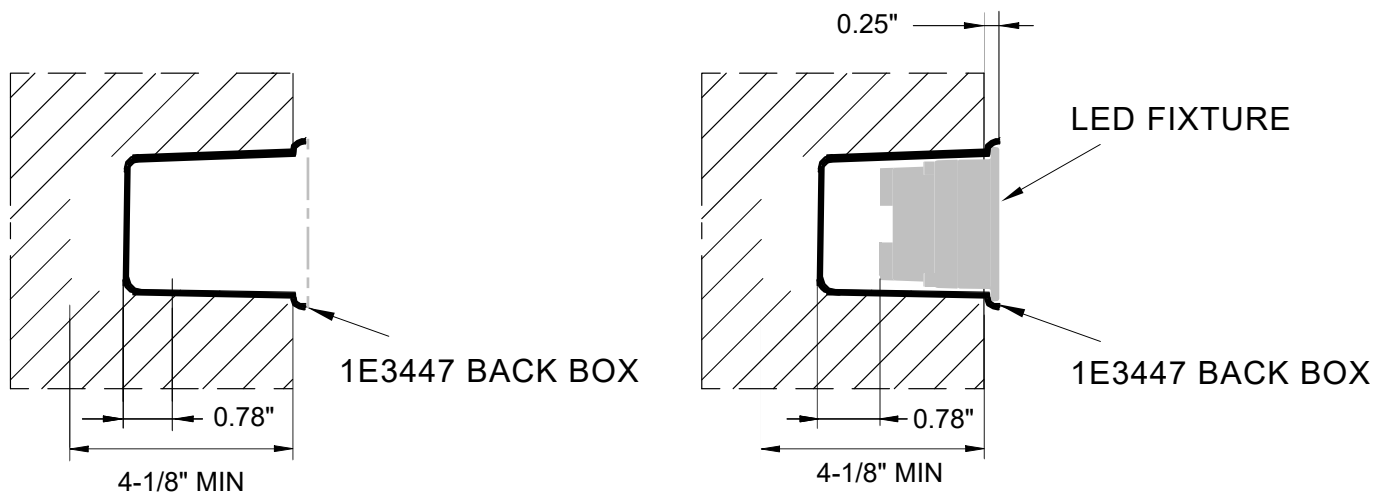


3

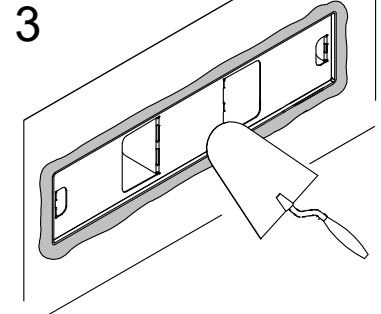
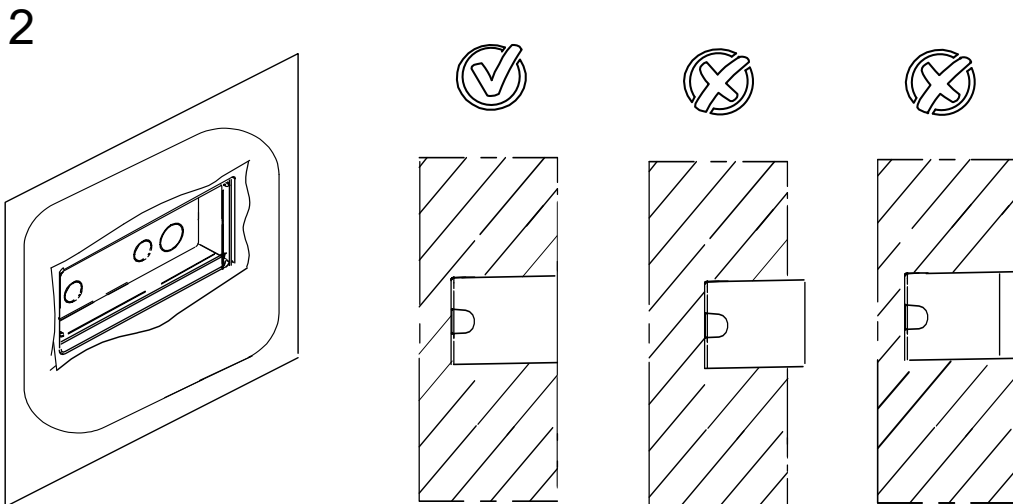


INSTALLATION TYPE "B" FLANGED MOUNTING

1E3447 Used with flush ring detached



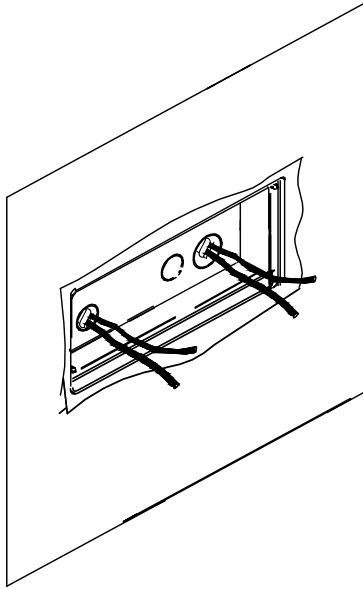
*Cut gaps larger than 1/8" from back box edge will be visible



Use support plate / cover for concrete pouring and for drywall / stucco patching

FIXTURE CONNECTIONS FOR INSTALLATION TYPES "A" "B"

Ready to install LED fixture



Dimming Cable



Line Voltage Cable

12" Feed end into box recommended for both Dimming and Line voltage cables.

*Use waterproof connections for out door installations.

***Confirm wiring details from fixture specific installation instructions.**

Maintenance

This fixture was designed and manufactured for a durable, long lasting use with minimum care. To ensure the maximum lifespan of this product, we encourage our customer to provide a quality visual inspection of the fixture and installation accessories every six months. If there are any visible signs of issues (i.e moisture or dust) during the inspection, please clean any of the dust or moisture with a soft cloth and check to make sure that any of the fixtures are still operating normally. If there are any issues regarding the fixture please contact us as we will assist the situation at hand.

Support

Any questions, problems, or comments you have please feel free to contact our Customer Service department during our business hours Monday-Friday 8am-5pm via: Email: usaorders@targetti.com
Phone: (714) 513-1991

Visit our website: <http://www.targettiusa.com>