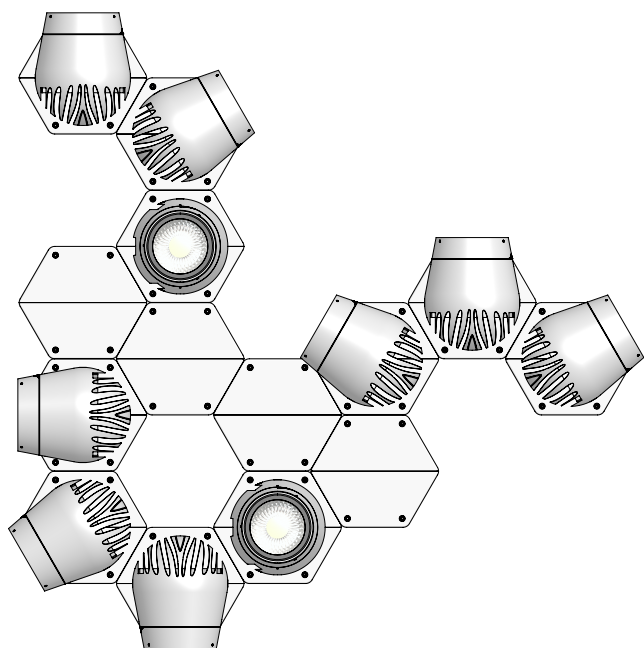




VADER

VADER-

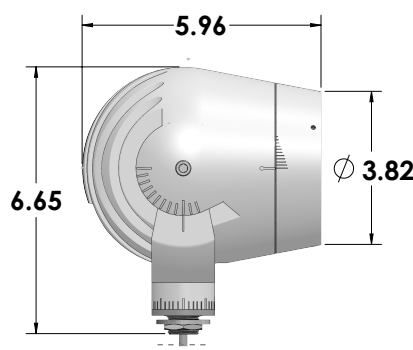
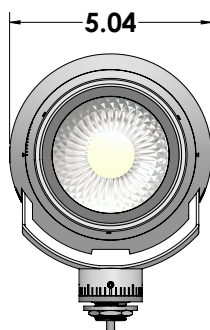
ALL-IN-ONE EXTREMELY ADJUSTABLE
FLOOD LIGHT PROJECTOR



If in doubt about the symbols, please
refer to catalog or website

48 VDC IP66 IP68^B  IK09 -13°F  +122°F

VADER FIXTURE



WARNING

To ensure maximum efficiency of the product,
read the following instructions thoroughly prior
to installation.



This fixture must be installed by a licensed
and qualified electrician. The installer
must comply with NEC and local building
codes when installing the fixture



Electrical current can cause painful shock,
serious injury, or even death. Make sure
you turn off the power supply, ground
fixture(s), and make sure all electrical
connections are correct and secured



For use in IP66 installations.



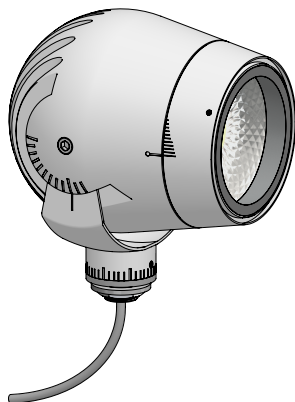
Keep the label of the original packaging if
any eventual future claims are needed

Table of Contents

Packaging Contents / Adjustment / Zoom Optic
Optical Accessories / Installation
Installation Accessories
Installation Examples
Control and Power Supply / Diagram
Maintenance / Support

Pg.2/3
Pg.4/5
Pg.6/25
Pg.26
Pg.27/28
Pg.29

Packaging Contents



VADER Fixture 1ea.

- | | |
|----------------------------|----------------------------|
| FE — Ferrite Grey | HB — Heritage Brown |
| BZ — Bronze RAL8019 | WT — White Textured |
| BT — Black Textured | SG — Sandstone Grey |

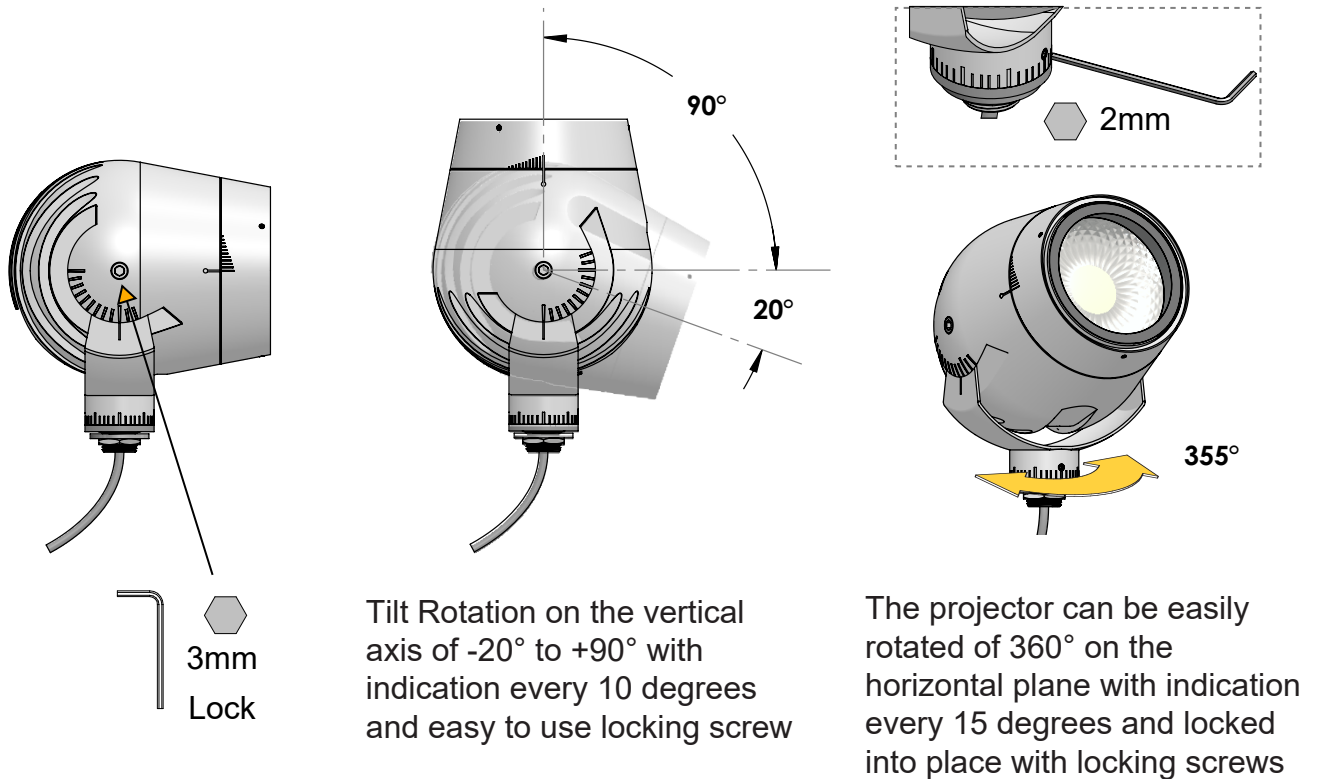


Control Box
6" x 2.75" x 2.75"

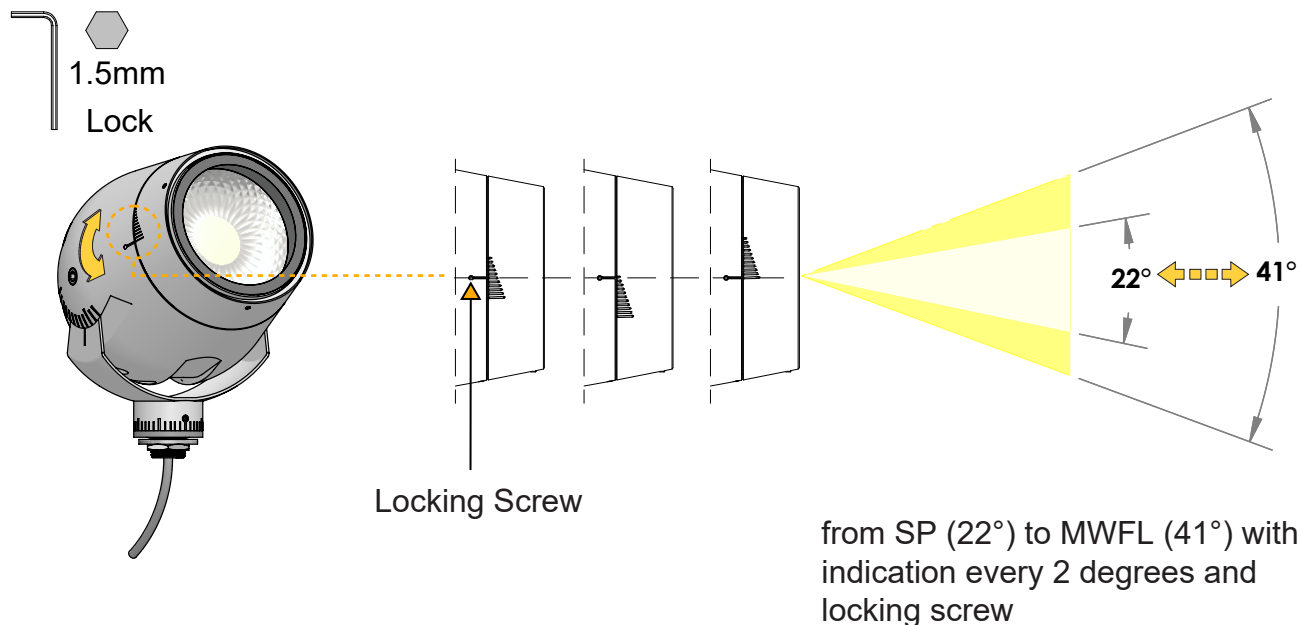


7"x 8"x 8" Box @7.7lbs

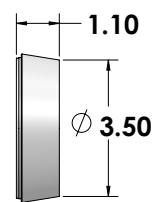
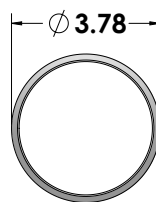
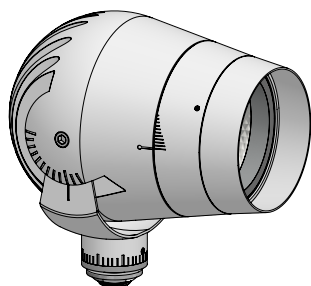
Adjustment



Zoom Optic

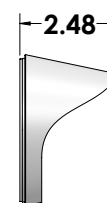
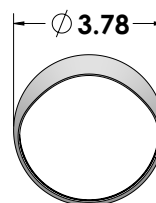
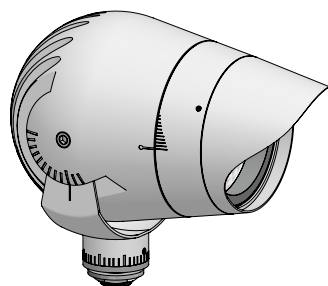


Optical Accessories (Optional)



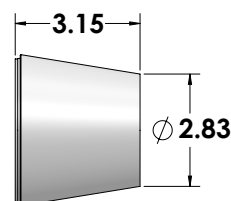
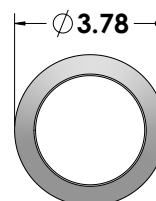
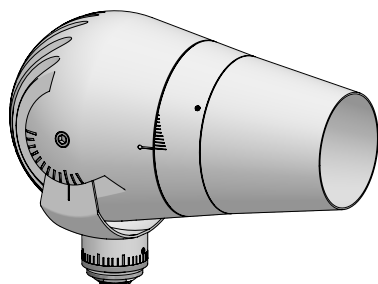
VADER symmetric snoot. Powder coated stainless steel.

Part No. **A036 (*)**



VADER asymmetric snoot. Powder coated stainless steel.

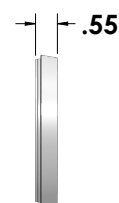
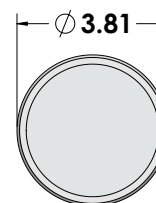
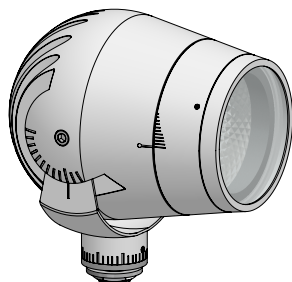
Part No. **A037 (*)**



VADER super snoot. Powder coated stainless steel.

To be used to create a narrow spot beam distribution.

Part No. **A038 (*)**



VADER 'Blade of Light' linear spread lens.

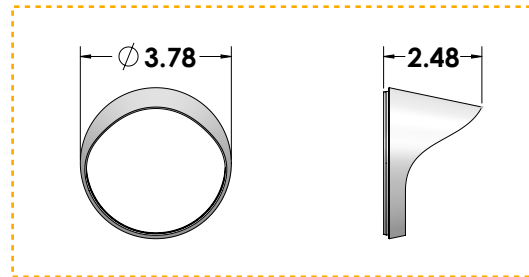
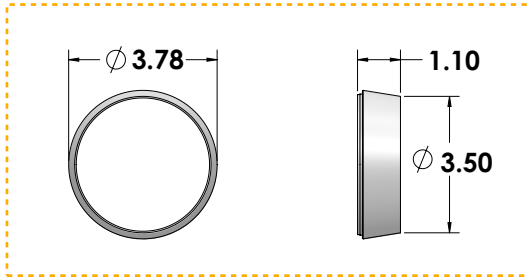
Part No. **A039 (*)**

● Ferrite Dark Grey (FE)* ● Heritage Brown (HB)* ● Bronze (BZ)* ● White (WT)* ● Black Anodized (BA)* ● Sandstone Grey (SG)*

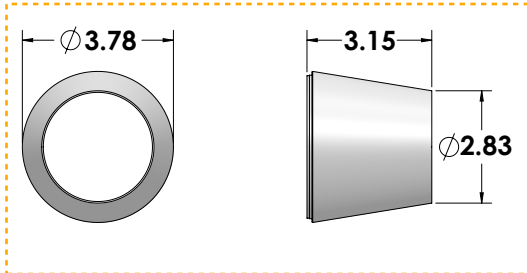
Optical Accessories Installation (Options)

Maximum of one accessory per fixture

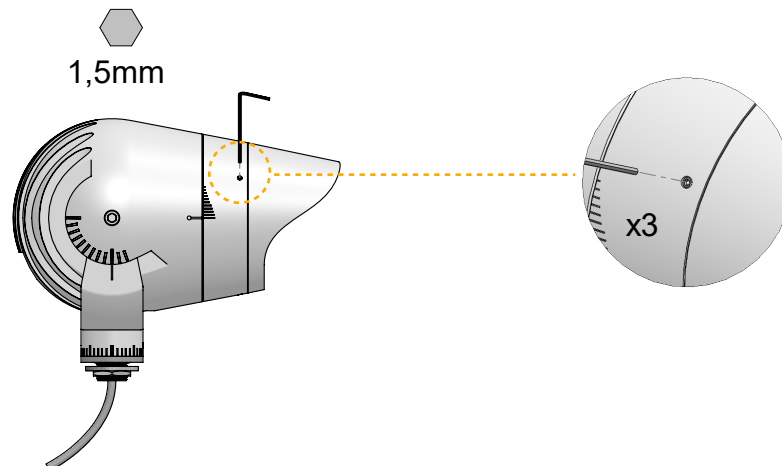
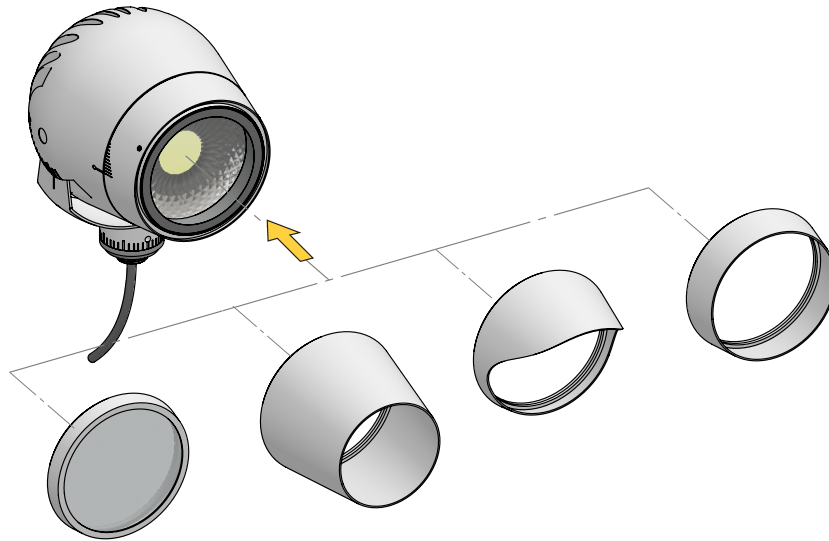
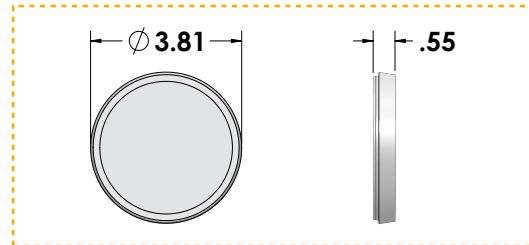
VADER symmetric snoot - A036 (*) **VADER asymmetric snoot - A037 (*)**



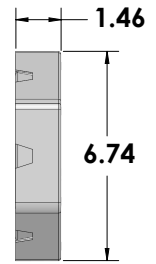
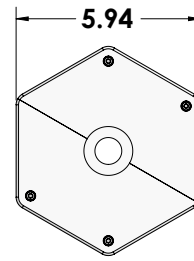
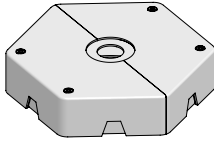
VADER super snoot- A038 (*)



VADER 'Blade of Light' linear spread lens- A039 (*)

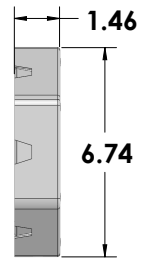
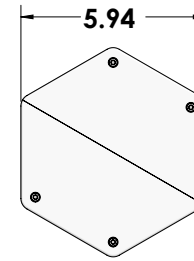
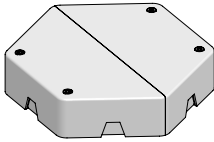


Installation Accessories (Optional)



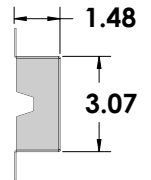
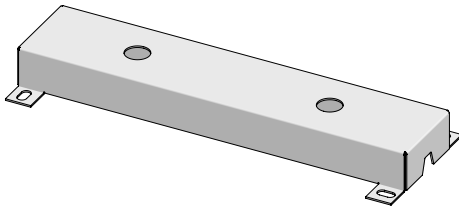
VADER surface hexagonal mounting base for plug-n-play control and mounting. Designed for cluster or pattern installations on surfaces. Allows multiple fixtures to connect while hiding connections and cables.

Part No. **A042 (*)**



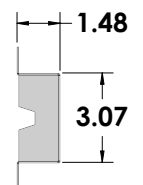
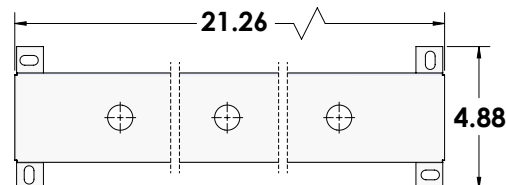
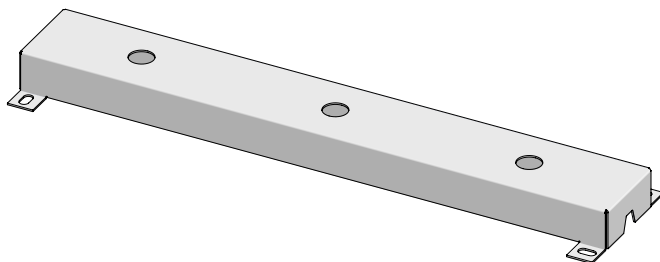
VADER blank surface hexagonal base cover. To be used in addition to A042 to continue clusters or patterns on surfaces.

Part No. **A043 (*)**



Double surface base. Powder coated stainless steel.

Part No. **A045(*)**



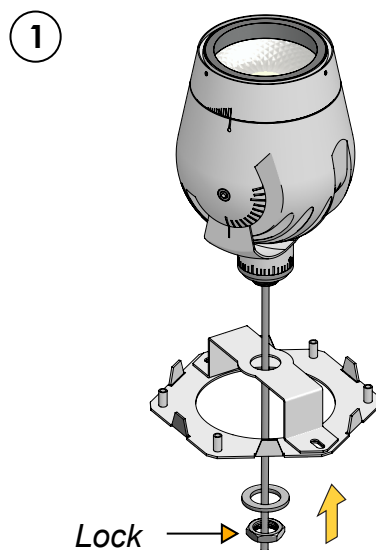
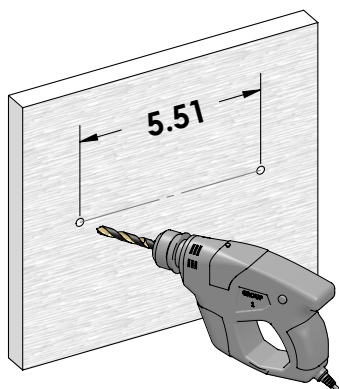
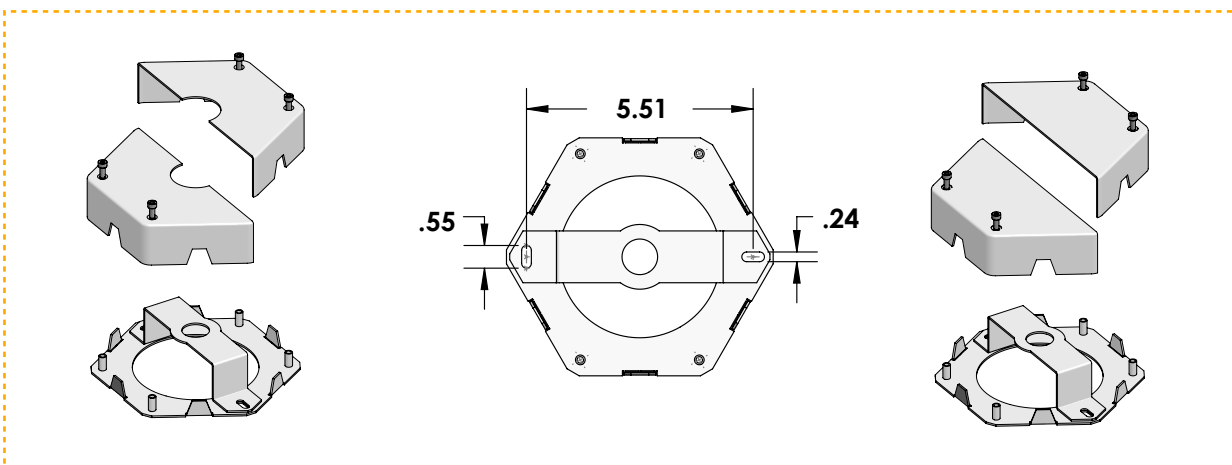
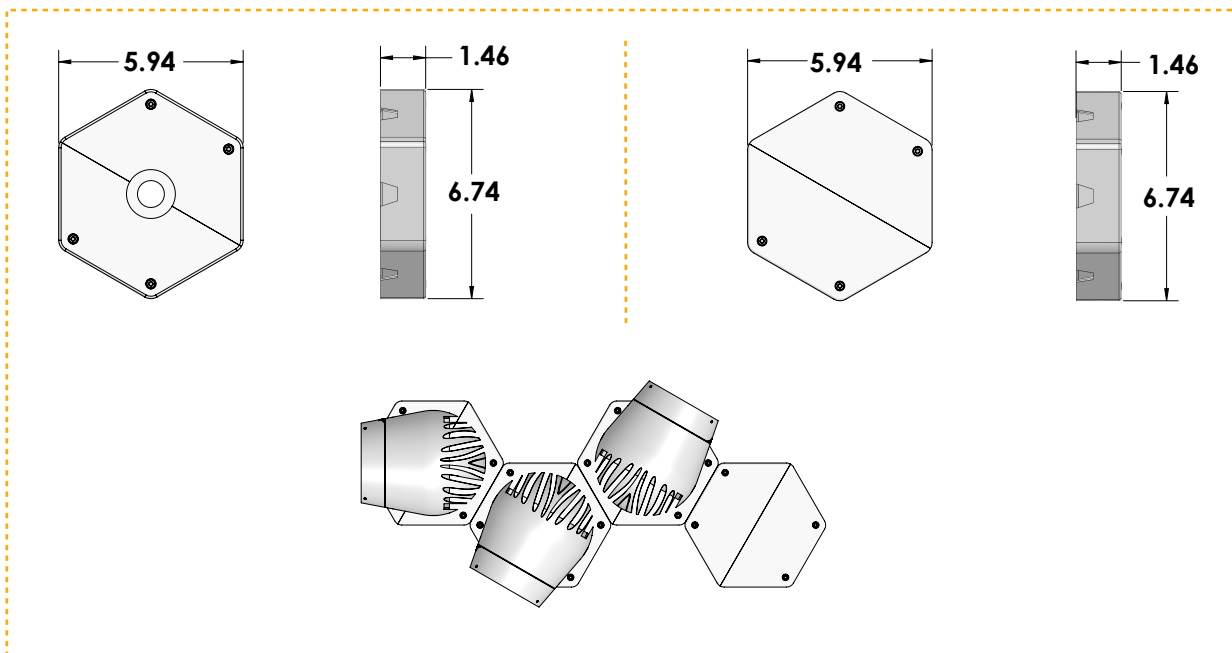
Triple surface base. Powder coated stainless steel.

Part No. **A046 (*)**

Installation Accessories

With Hexagonal Base / Blind Hexagonal

A042 / A043

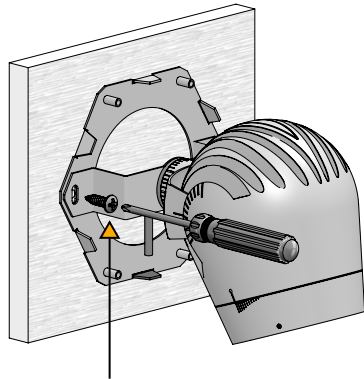


Installation Accessories

With Hexagonal Base / Blind Hexagonal

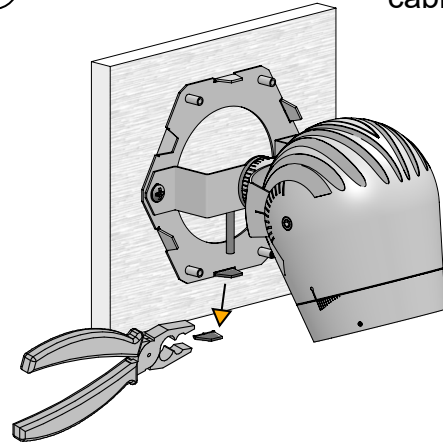
A042 / A043

2



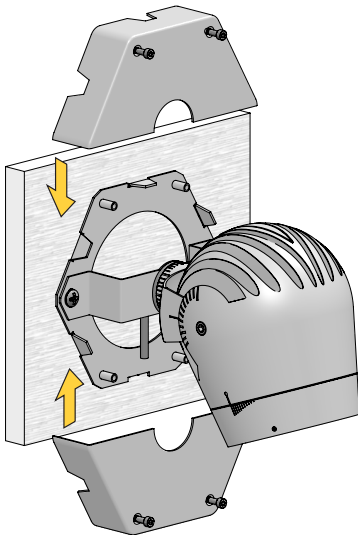
Not included

3

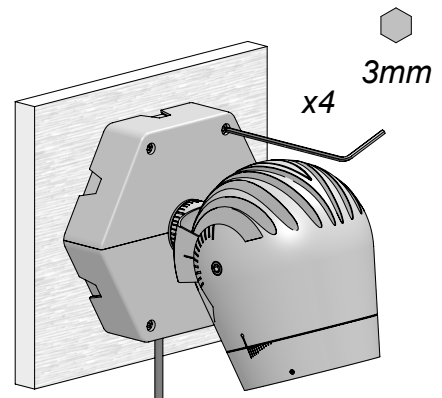


Remove for
cable passage

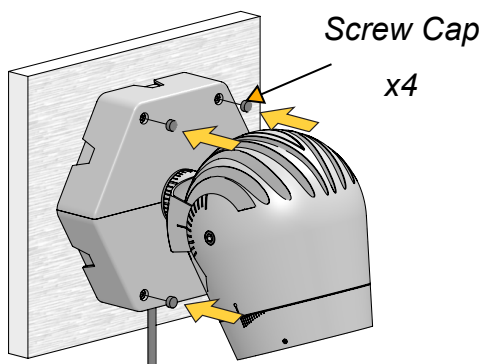
4



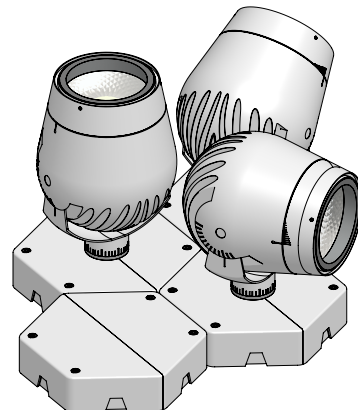
5



6



Screw Cap
x4



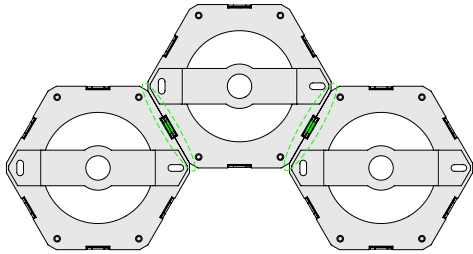
Installation Accessories

With System Hexagonal and Blind Hexagonal

A042 / A043

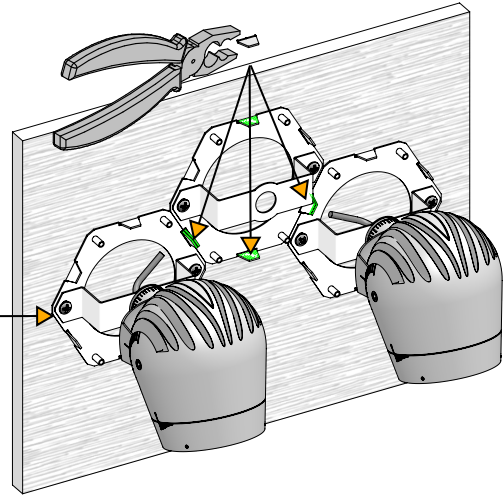
①

Place in contact



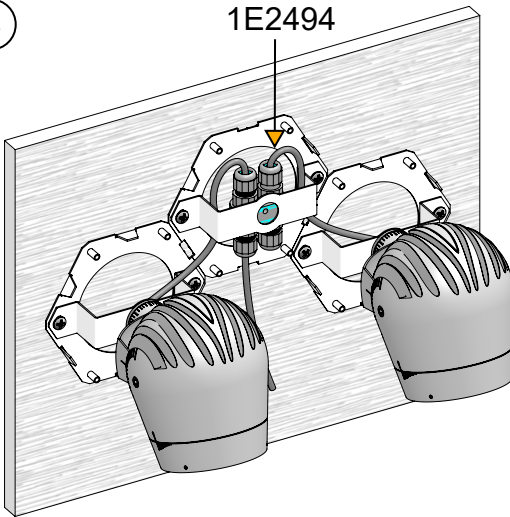
②

Remove for cable passage

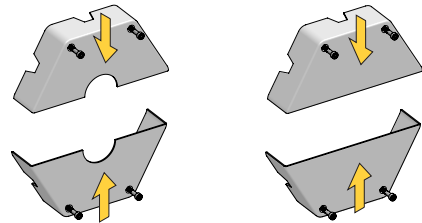


③

1E2494



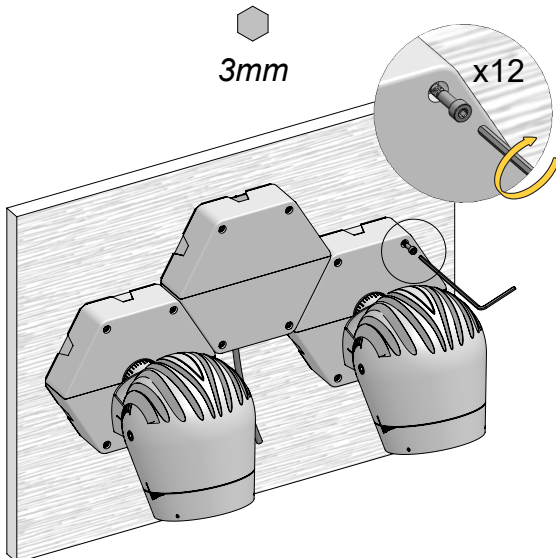
④



⑤

3mm

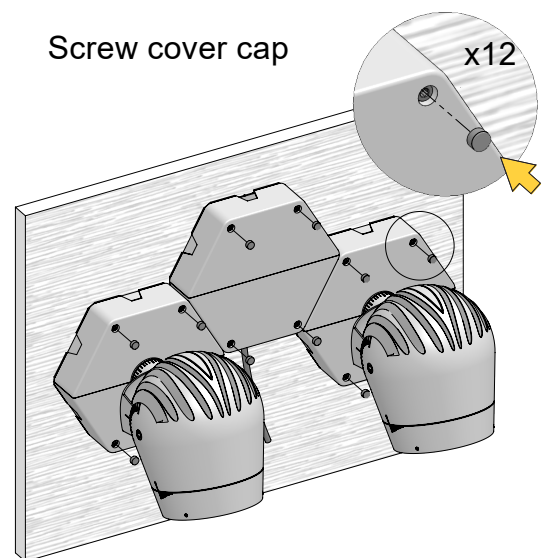
x12



⑥

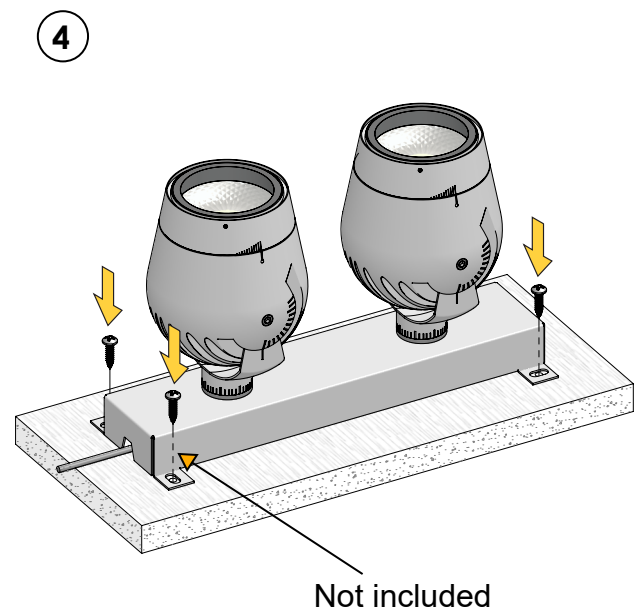
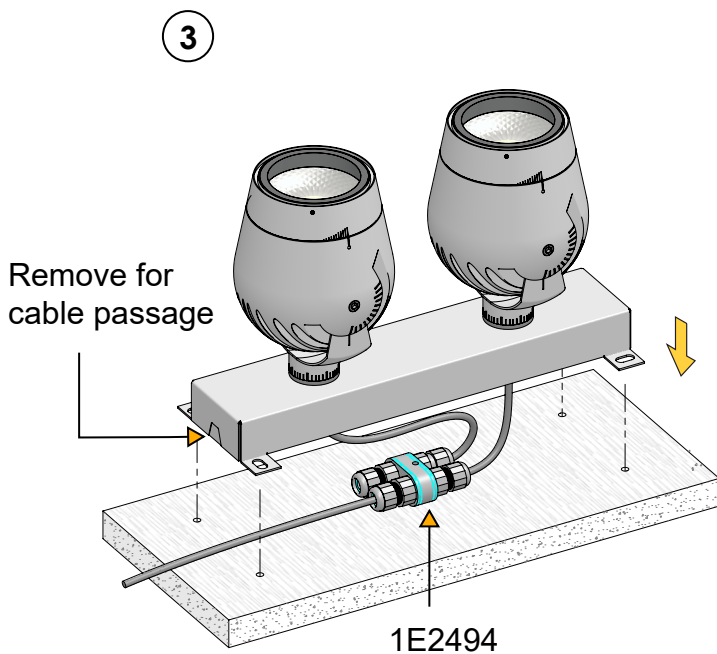
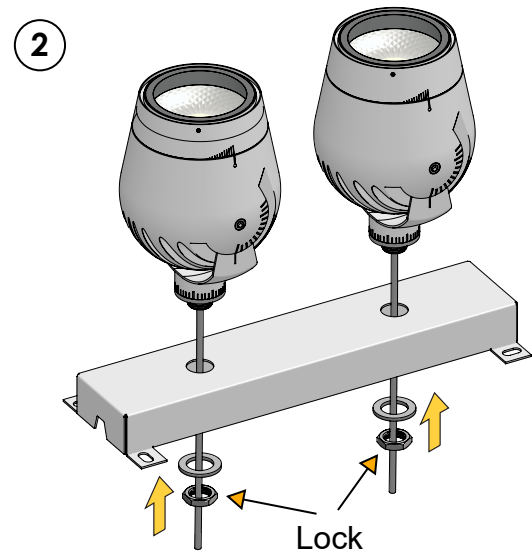
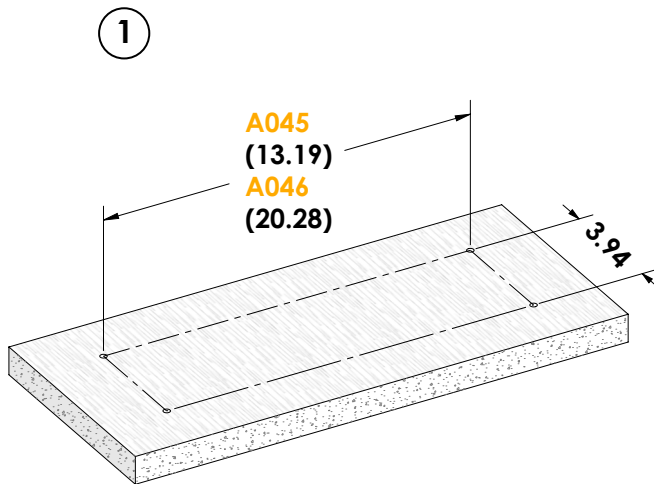
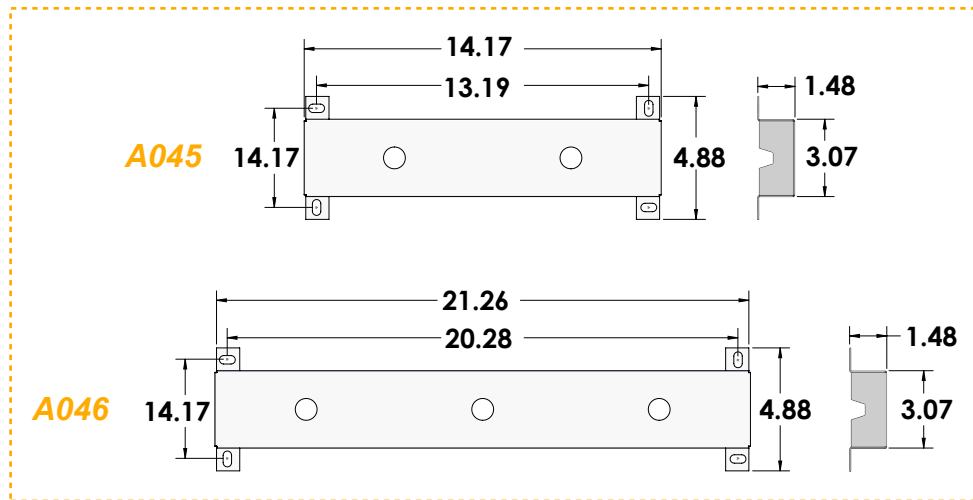
Screw cover cap

x12

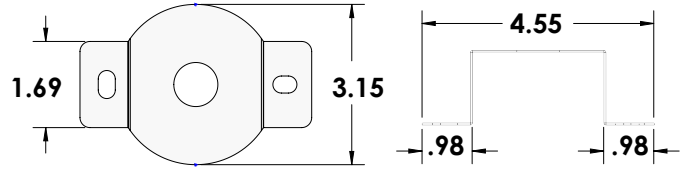
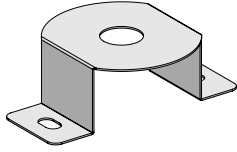


Installation Accessories

With Multiple Surface Base A045 / A046

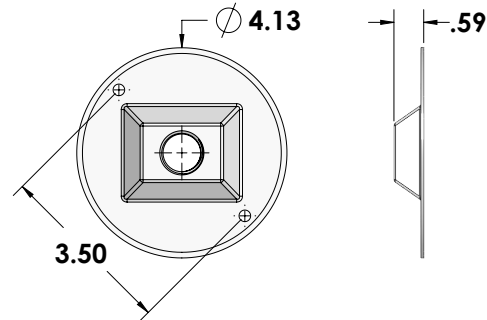
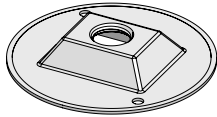


Installation Accessories (Optional)



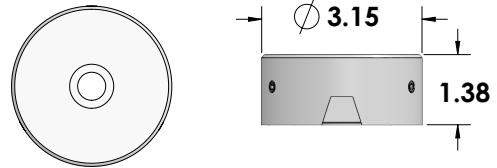
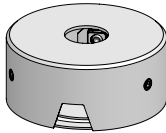
Surface mounting bracket. Powder coated stainless steel.

Part No. A044 (*)



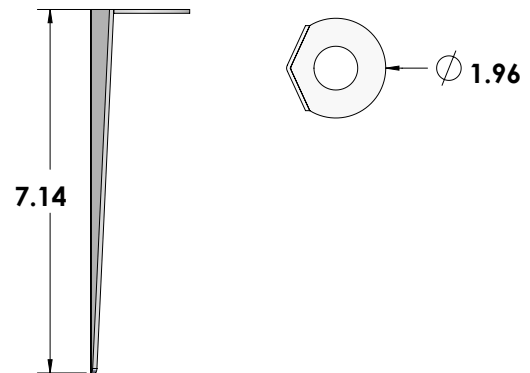
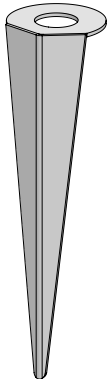
Low profile surface canopy. Powder coated aluminum with 1/2" NPT to mount over standard 4" Dia. round outdoor j-box.

Part No. 1BLTSMCVR (*)



Surface mount base, powder coated stainless steel.
For surface wiring applications.

Part No. A040 (*)



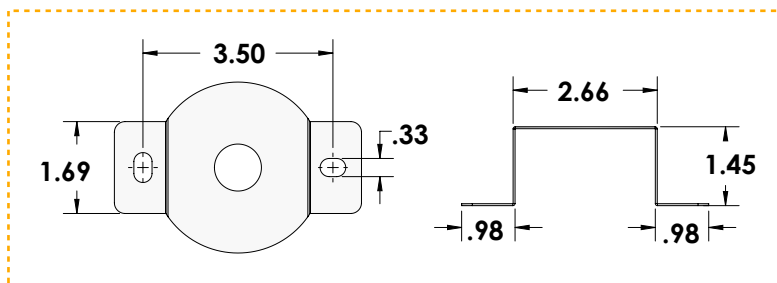
Ground spike for landscape installation. Powder coated stainless steel.

Part No. 1E3785 (*)

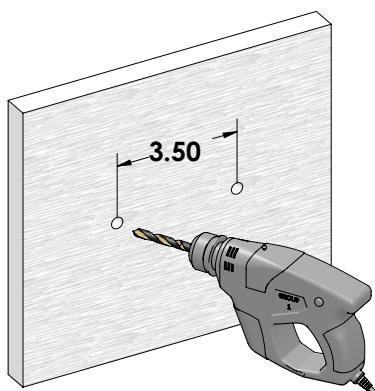
● Ferrite Dark Grey (FE)* ● Heritage Brown (HB)* ● Bronze (BZ)* ● White (WT)* ● Black (BT)* ● Sandstone Grey (SG)*

Installation Accessories

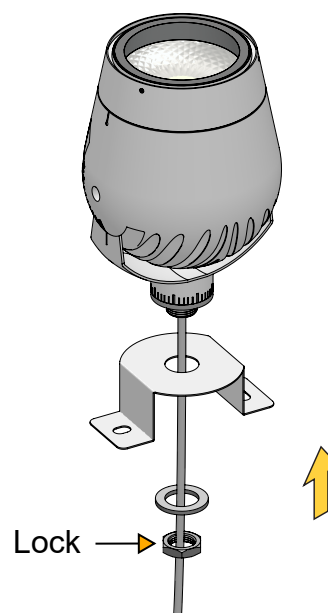
With Surface Mounting Bracket - A044



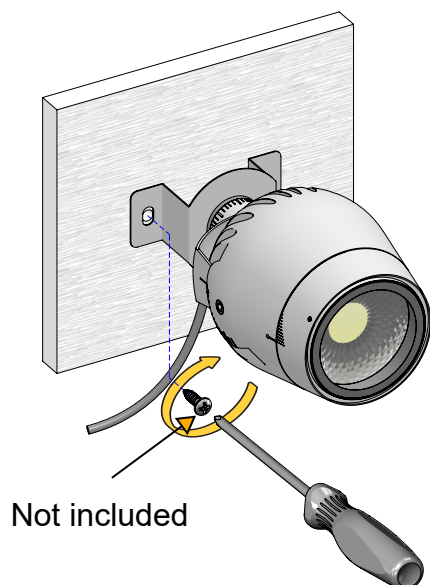
1



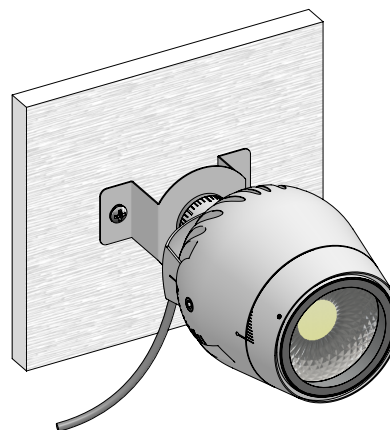
2



3

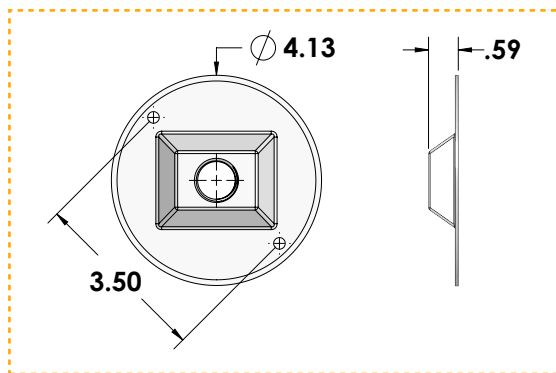


4

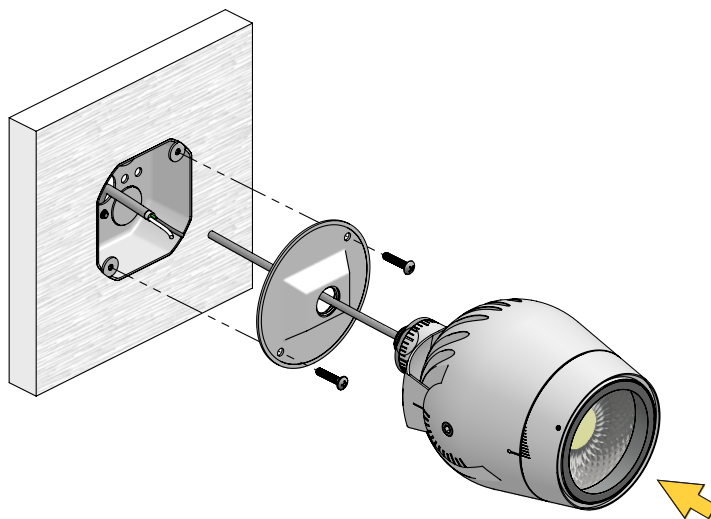
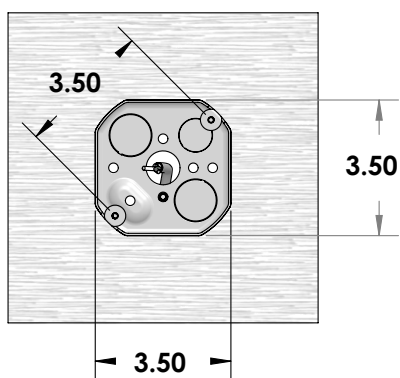


Installation Accessories

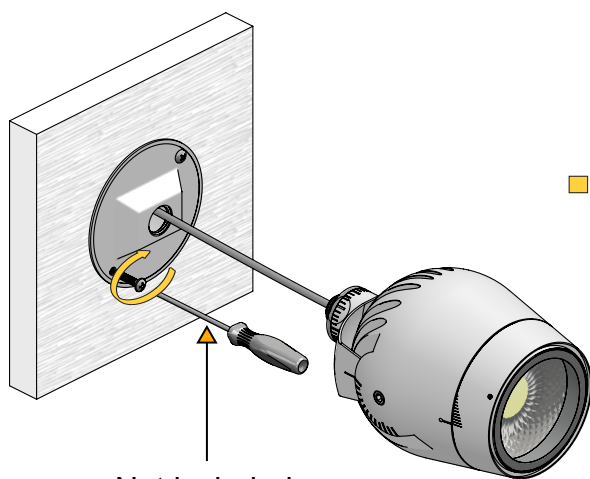
With Low Profile Surface Canopy - 1BLTSMCVR



1

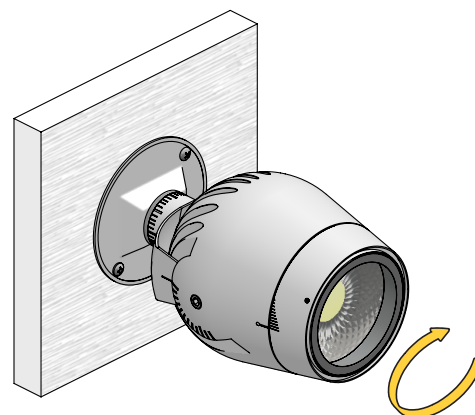
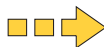


2



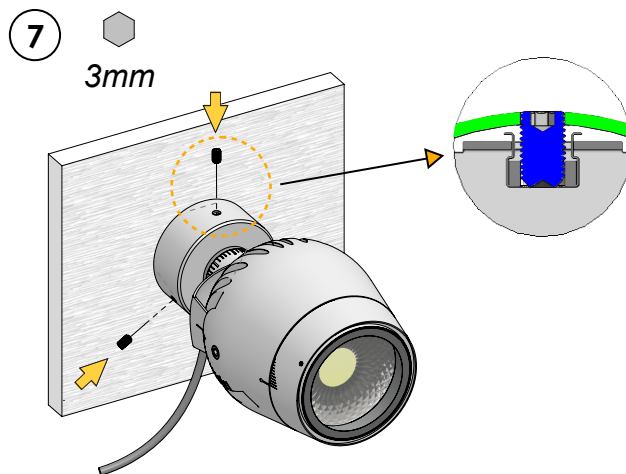
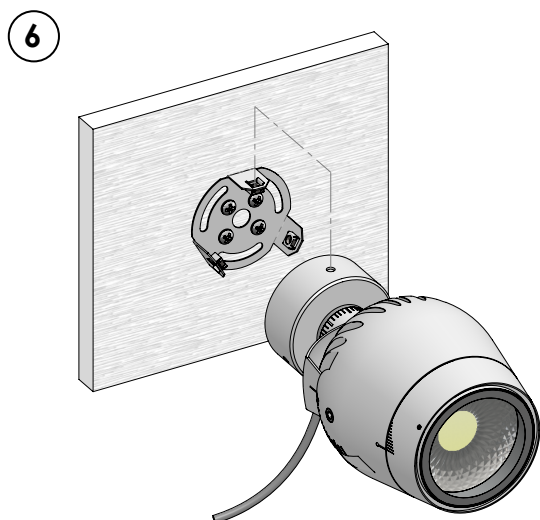
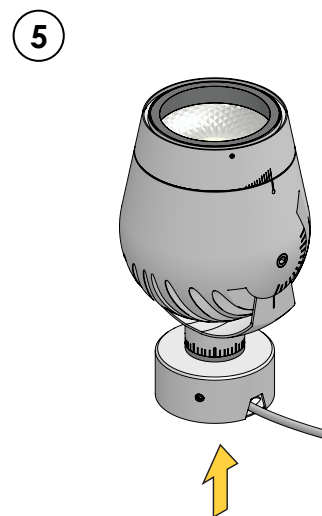
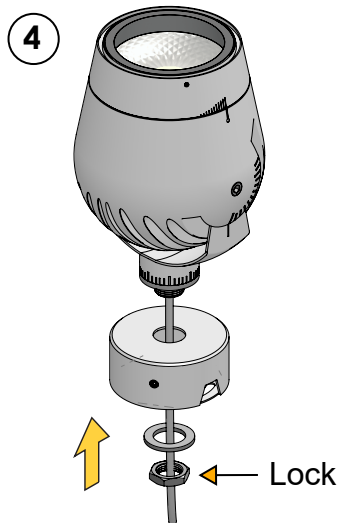
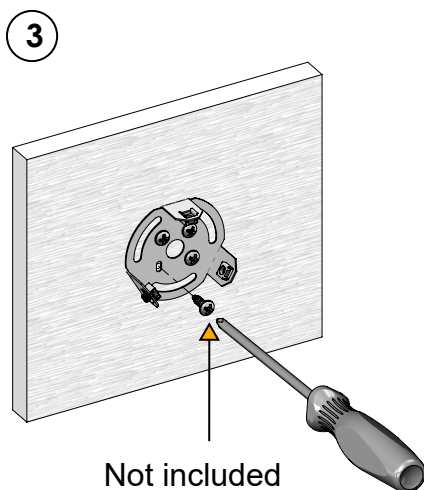
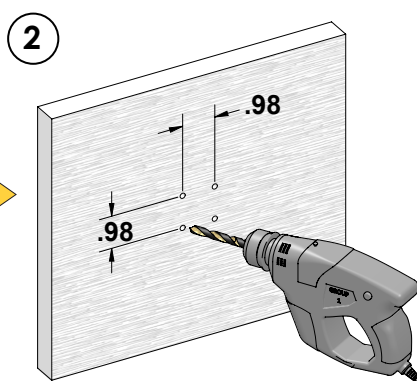
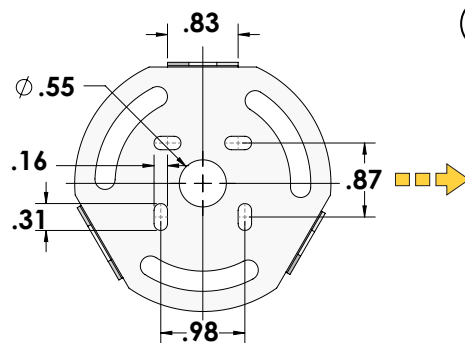
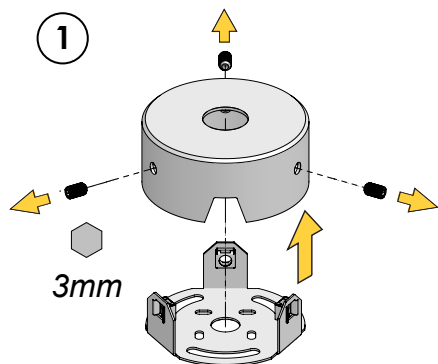
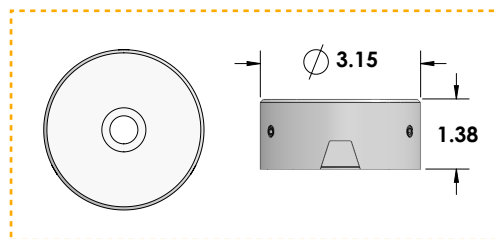
Not included

3



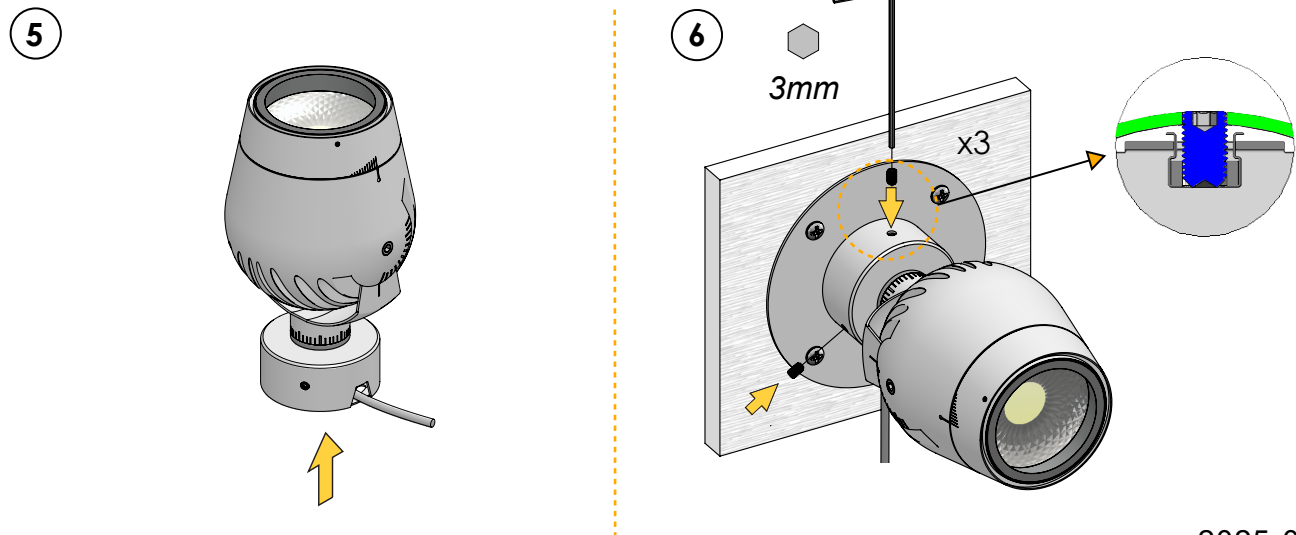
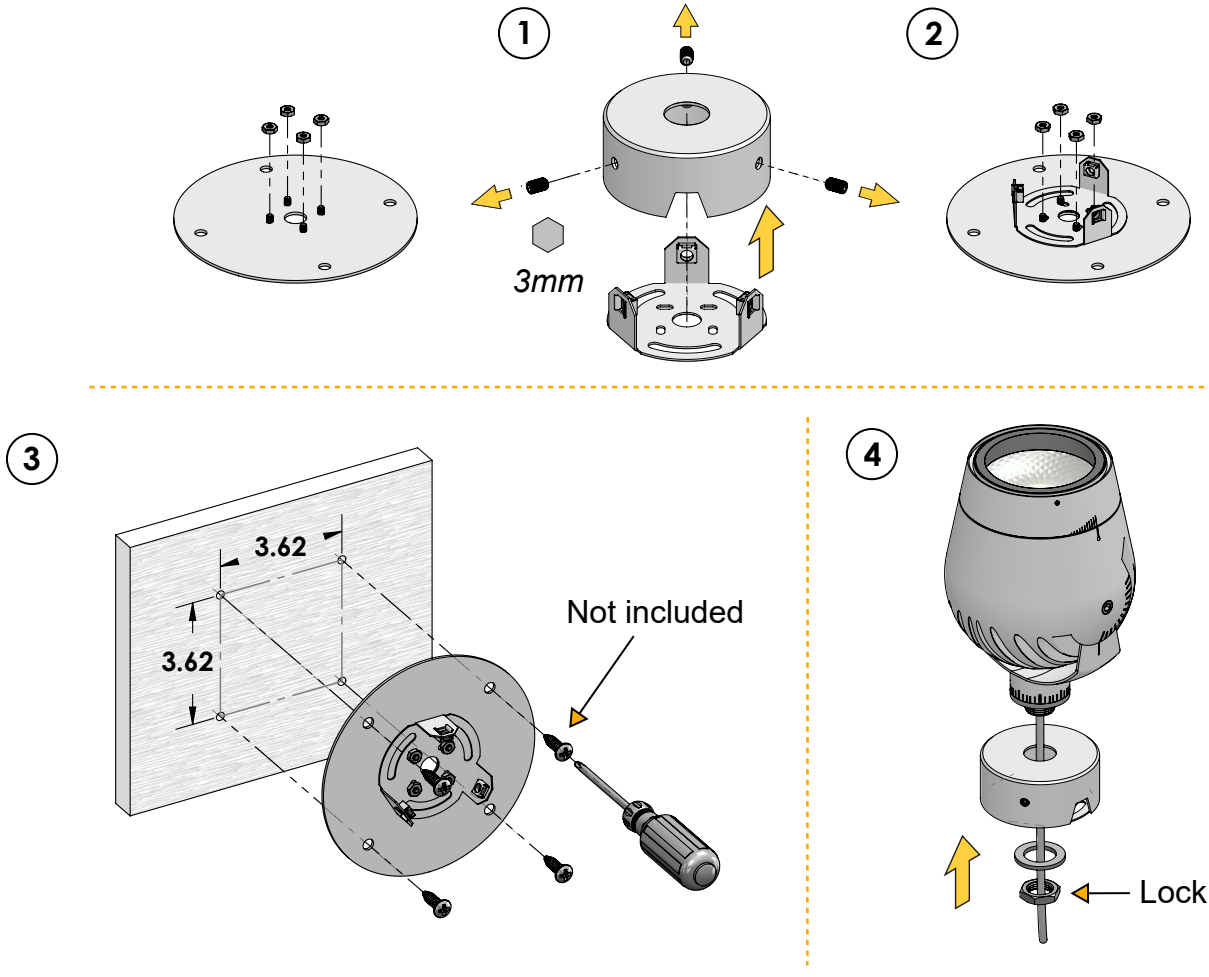
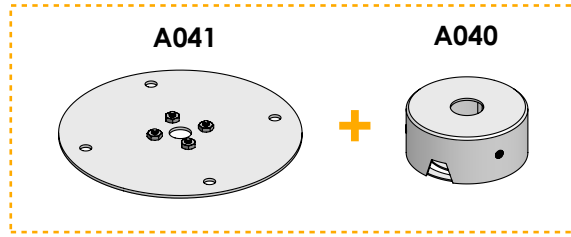
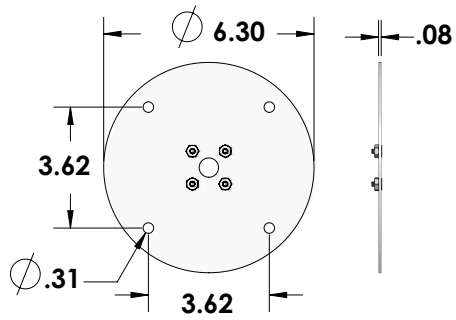
Installation Accessories

With Surface Mounting Base - A040



Installation Accessories

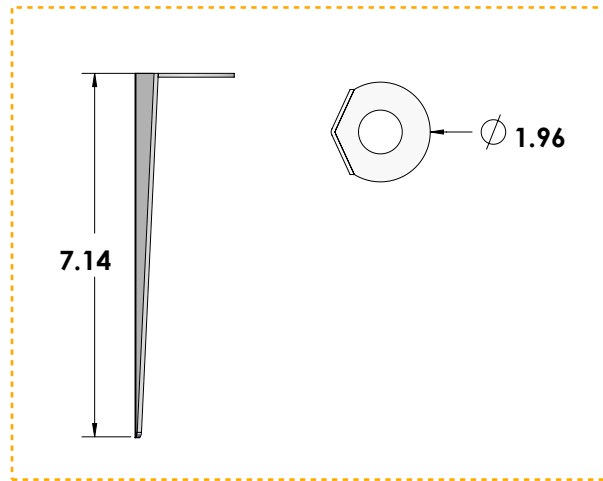
With Plate For Round Base - A0401



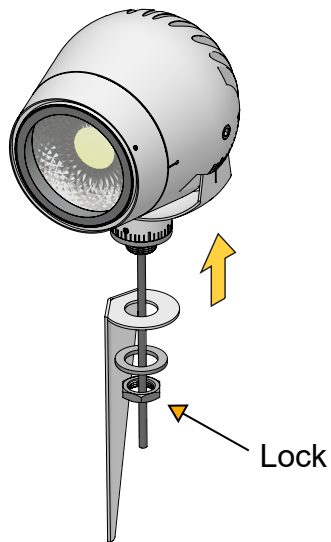
Installation Accessories

With Ground Spike

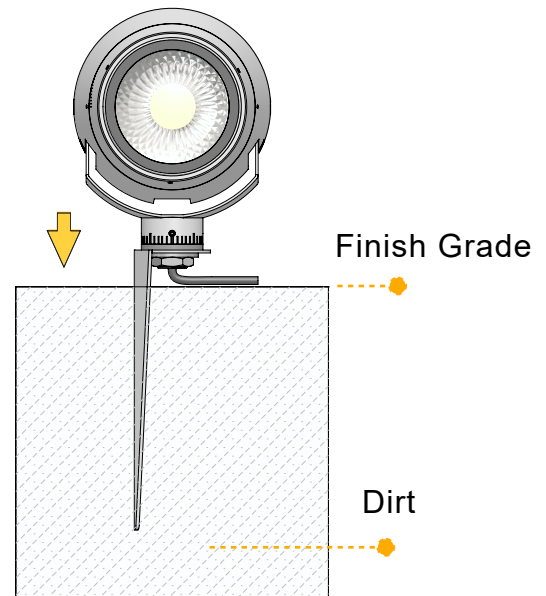
1E3785



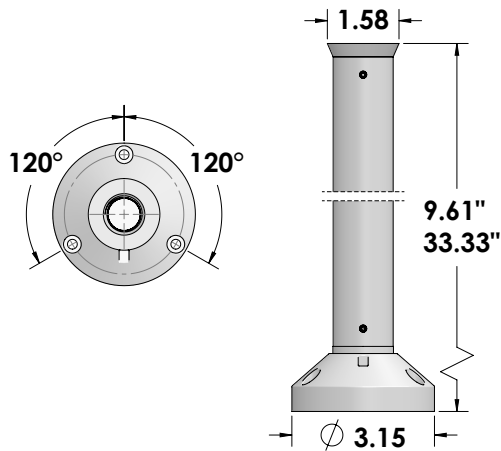
1



2

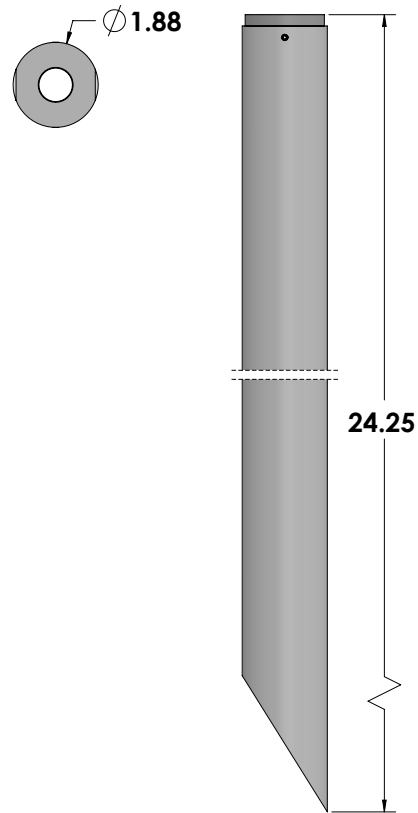


Installation Accessories (Optional)



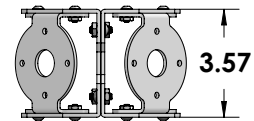
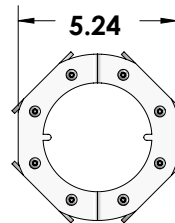
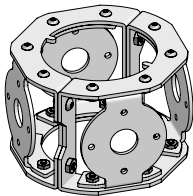
Surface post. Powder coated stainless steel post with 4" Dia. round outdoor j-box cover with 1/2" NPT.

Part No. 1USA047 (*) 1USA048 (*)



Permapost. Aluminum with 1/2" NPT and 1ea stabilizer.

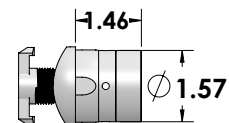
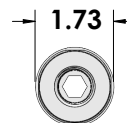
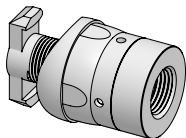
Part No. PRMP24BK(*)



Mounting bracket for event pole for up to 4ea fixtures. Event pole sold separately. Powder coated stainless steel.

Part No. 1USP01BKTFEQ (*)

Finish ● Deep Black



Single fixture pole bracket, 1ea. 2.5" Dia. pole provided by others. 3.6" Dia. pole compatible with Targetti event pole. Powder coated stainless steel.

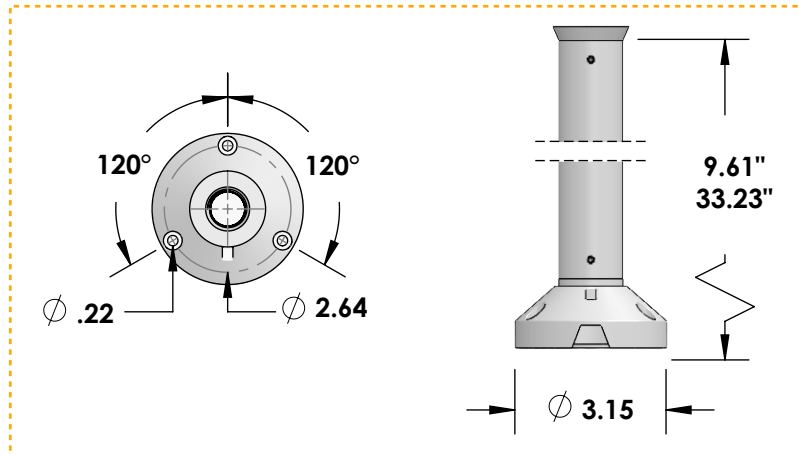
Part No. 2.5"Dia (60mm) A052 (*)

3.6"Dia (90mm) A054 (*)

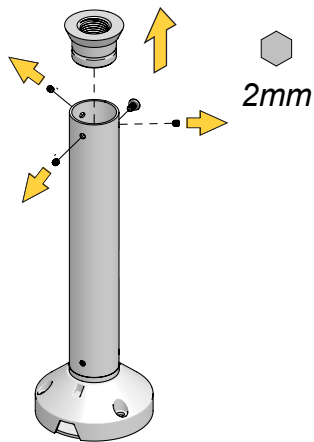
● Ferrite Dark Grey (FE)* ● Heritage Brown (HB)* ● Bronze (BZ)* ● White (WT)* ● Black (BT)* ● Sandstone Grey (SG)*

Installation Accessories

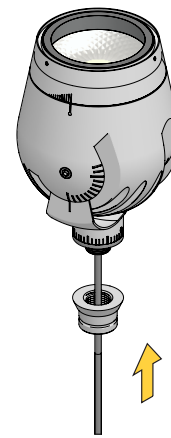
With Surface Short / Long Post
1USA047 / 1USA048



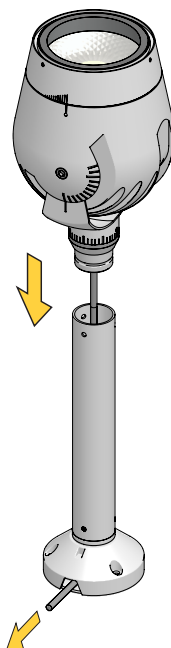
1



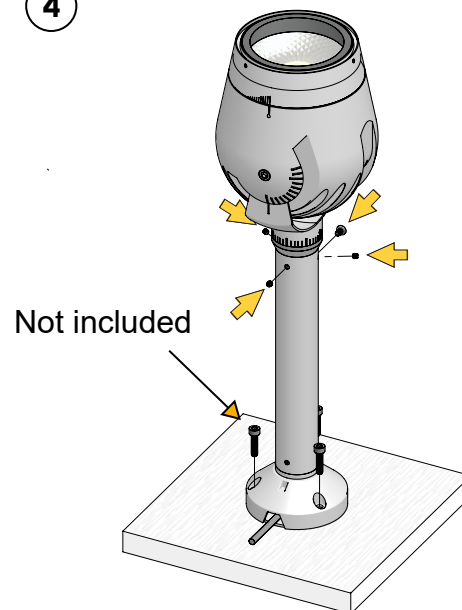
2



3



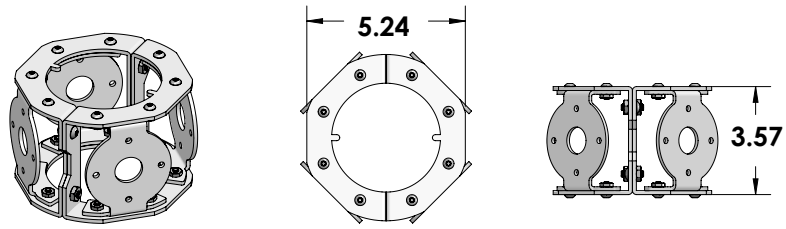
4



Installation Accessories

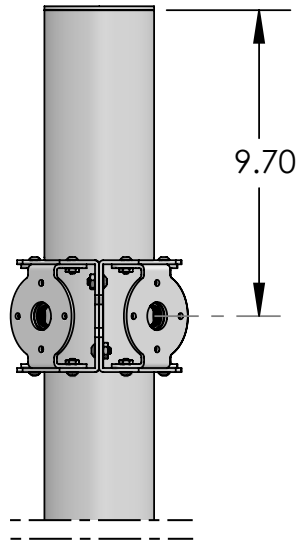
With Mounting Bracket for Event Pole

1USP01BKTFEQ

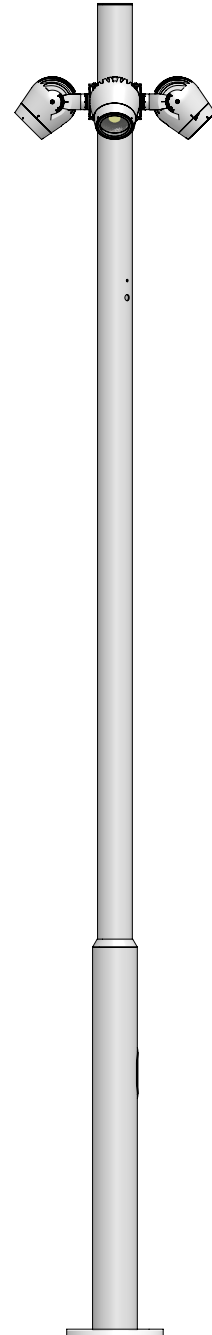


Mounting bracket for event pole for up to 4ea fixtures.

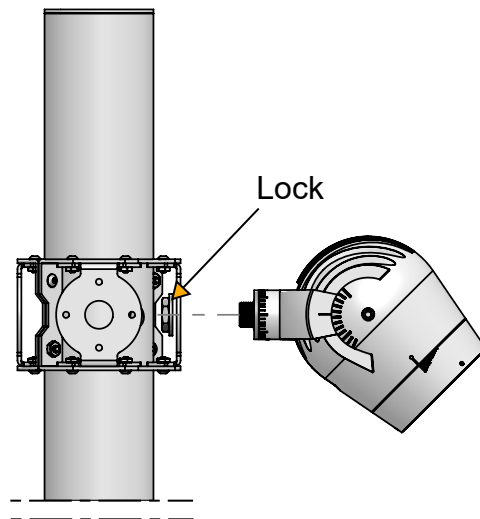
①



③



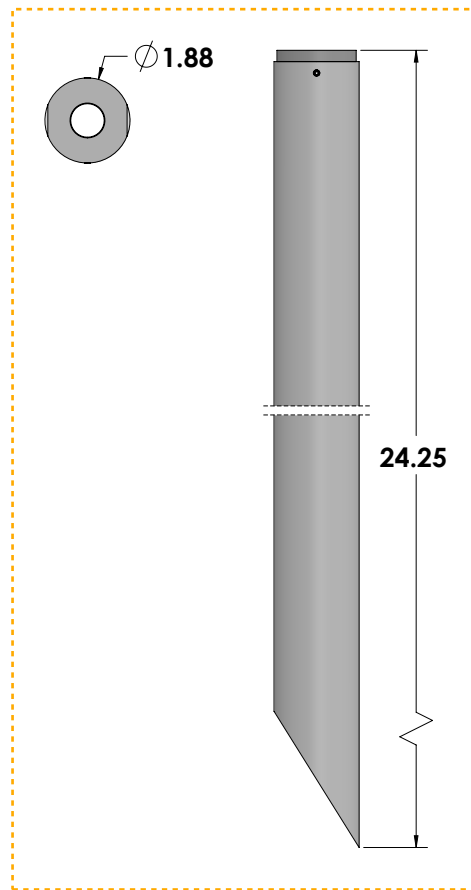
②



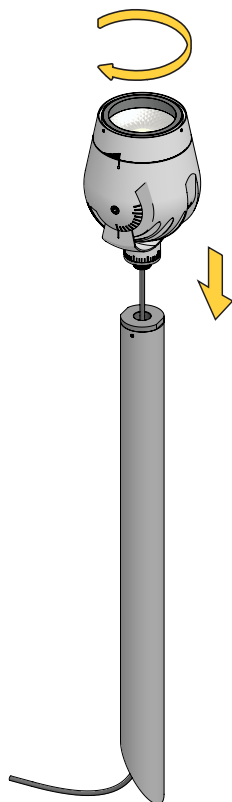
Installation Accessories

With Ground Spike

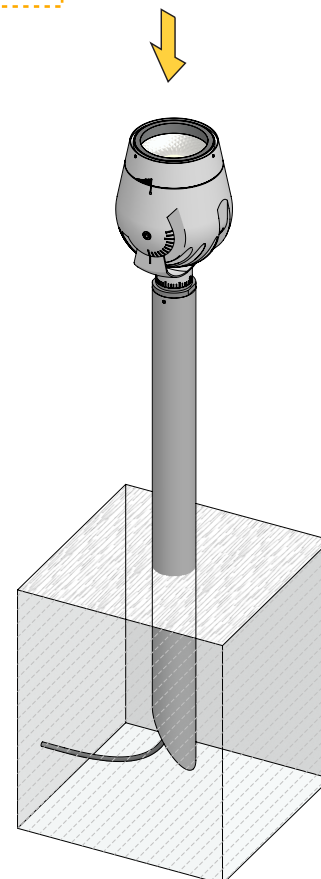
1E3785



①



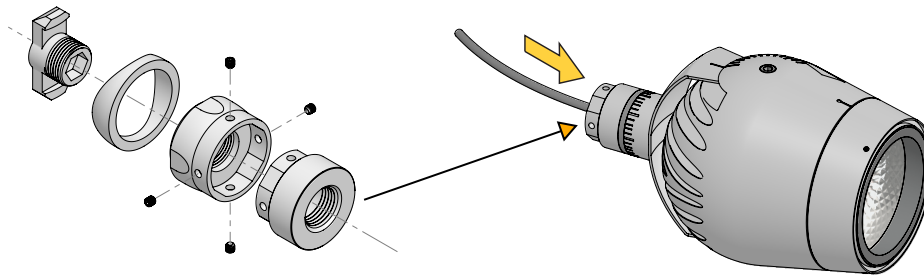
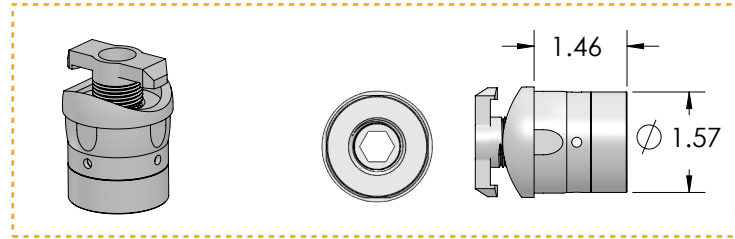
②



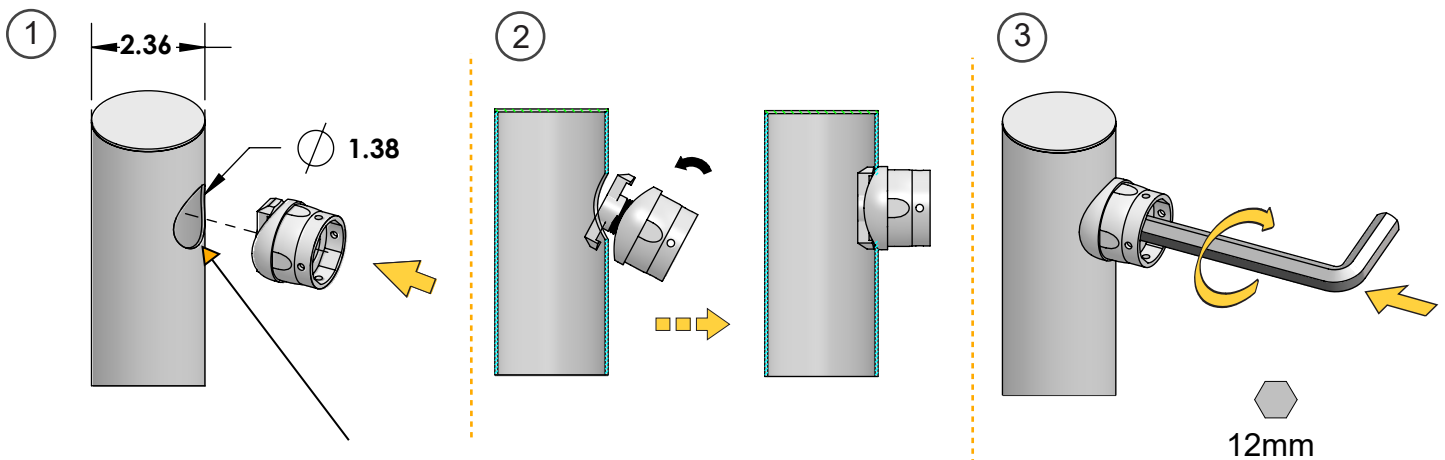
Installation Accessories

With Single Fixture Pole Bracket

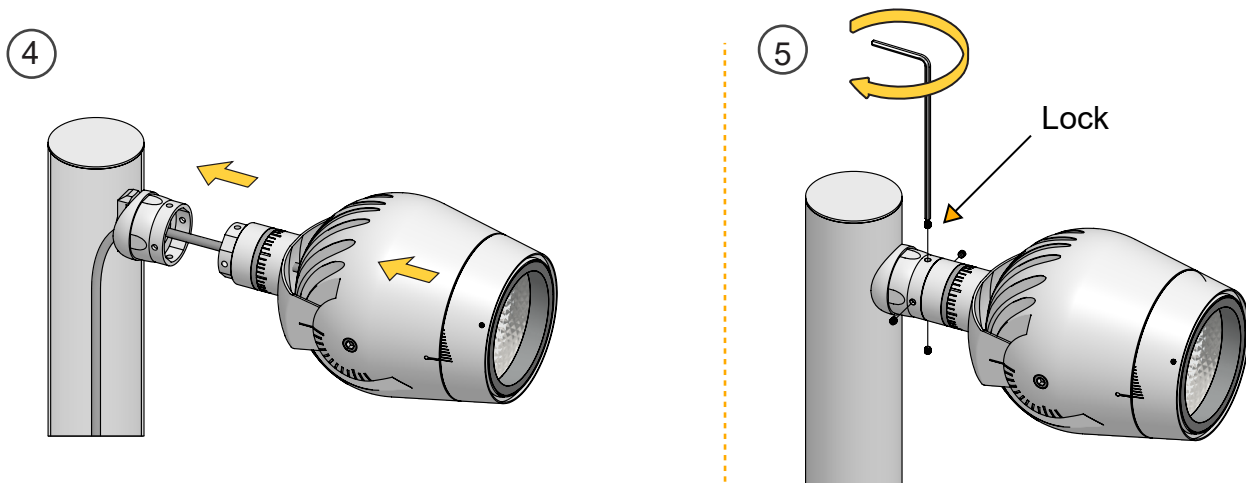
A052 / A054



TYPE 1



Protect the drilled hole with proper anti-corrosion agent, to restore rust protection

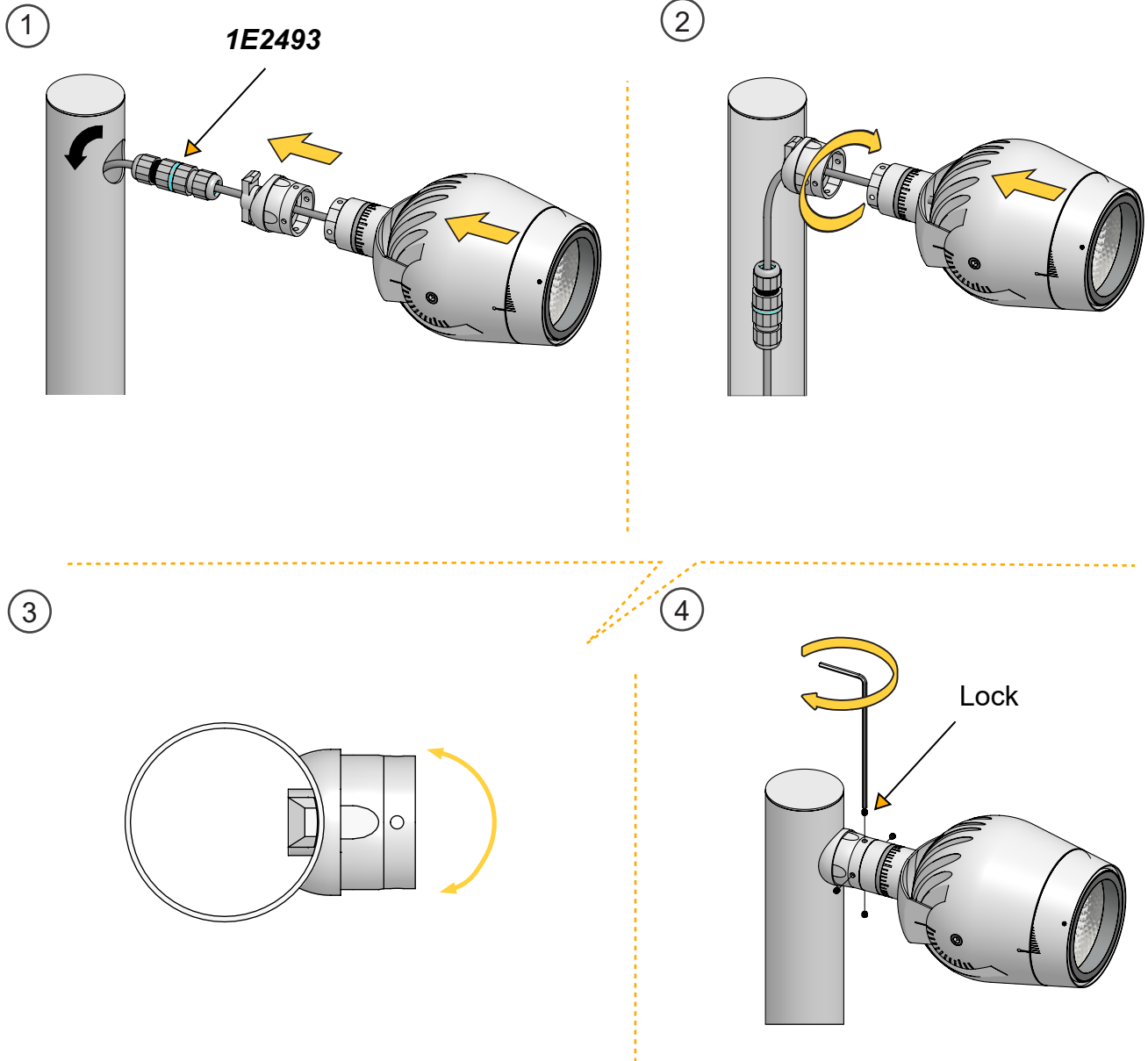


Installation Accessories

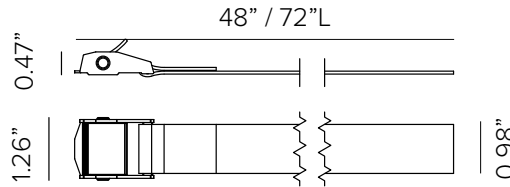
With Single Fixture Pole Bracket

A052 / A054

TYPE 2

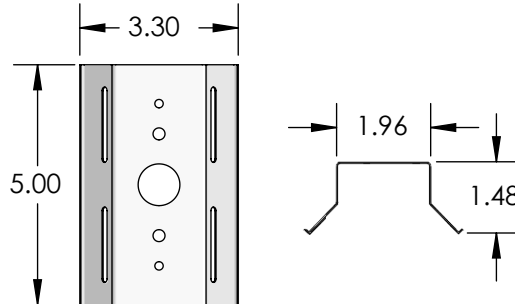
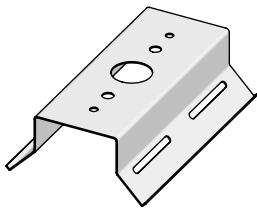


Tree Mounting Installation



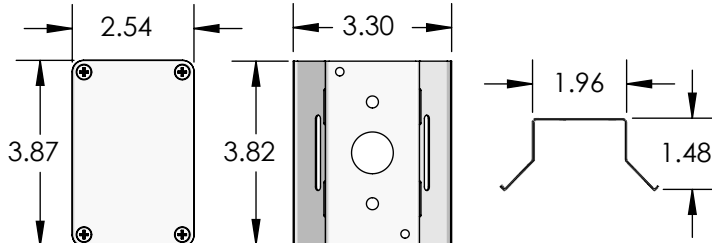
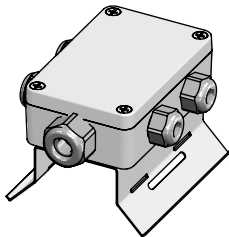
Tree strap. Durable marine grade polypropylene webbing flexible strap with stainless steel cam buckle. **Maximum of 4 fixture brackets per double strap. (REQUIRED FOR TREE MOUNTING)**

Finish	● Black	● CoyoteBrown	● SilverGrey	● GraphiteGrey
Part No. 36"	TTS01D48BK	TTS01D48BK	TTS01D48SG	TTS01D48GG
Part No. 72"	TTS01D72BK	TTS01D72BK	TTS01D72SG	TTS01D72GG



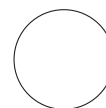
Fixture bracket comprised of powder coated stainless steel for use with tree strap. **Maximum of 4 fixture brackets per double strap. (REQUIRED FOR TREE MOUNTING)**

Finish	● Black	● Bronze	● SandstoneGrey	● Ferrite Dark Grey
Part No.	TTB01DBK	TTB01DBZ	TTB01DSG	TTB01DFG



Connection box. Painted aluminum UL listed j-box with single input and 4ea max outputs for lateral cable exit. Provided with 1ea 1/2" cable gland and 4ea 3/8" cable gland, 3ea plugs provided along with mounting bracket, **tree strap sold separately**. Used to connect single 24V DC low voltage cable from remote driver to connection box. For single strap configuration, use 1ea connection box. For double strap configuration, use 2ea connection boxes. **(OPTIONAL)**

Finish	● Black	● Bronze	● Sandstone Grey	● Ferrite Dark Grey
Part No.	TTC02SBK	TTC02SBZ	TTC02SSG	TTC02SFG



Expands
Ø 0.38"
to 1"

Mesh wire protection cable sleeve, available per foot. Comprised of braided polyethylene terephthalate (PET) mono-filament webbing resistant to chemical degradation, UV radiation, and abrasion. **To be used in installations where multiple cables can be combined into a 'single' cable look and/or to conceal the cable to match the finish of the surface. (OPTIONAL)**

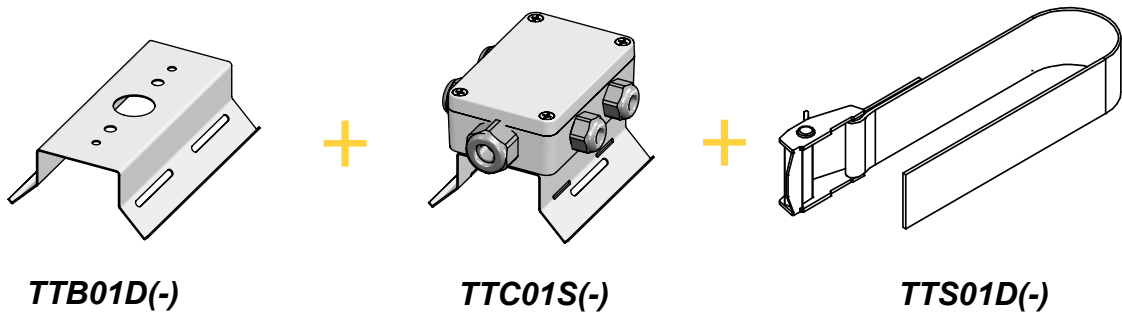
Finish	● Black	● CoyoteBrown	● SilverGrey	● GraphiteGrey
Part No.	TTMW01BK	TTMW01BR	TTMW01SG	TTMW01GG

Tree Mounting Installation Accessories

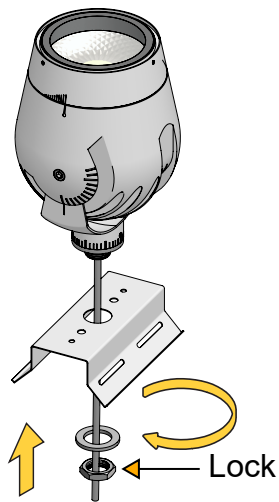
With Fixture Bracket - TTB01D(-)

Connection Box - TTC02S(-)

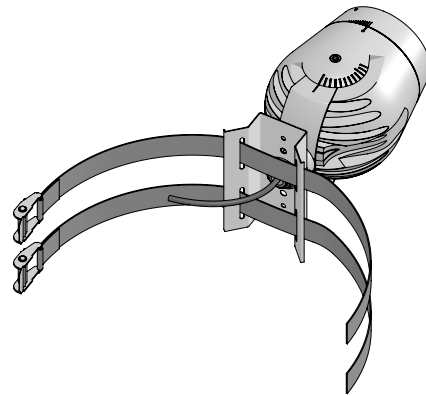
Tree Strap - TTS01D(-)



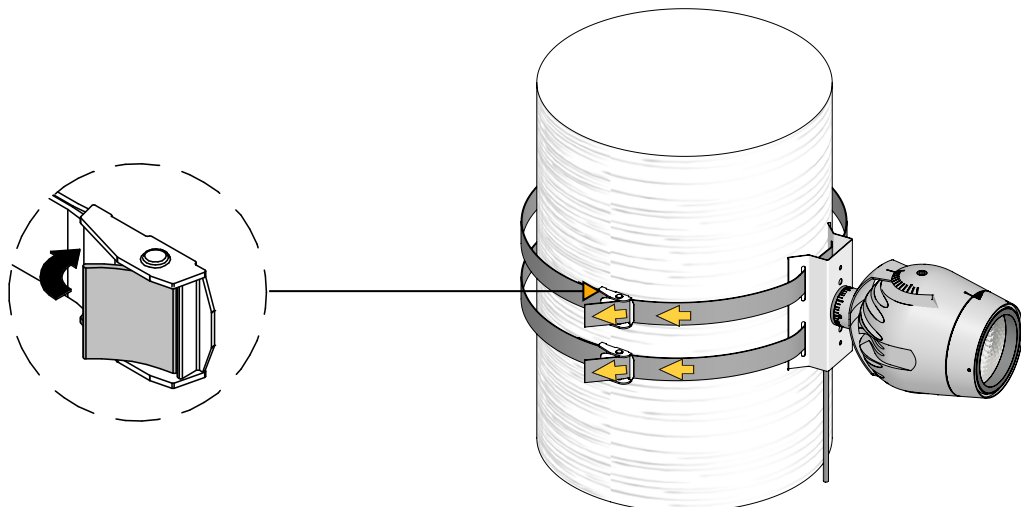
1



2



3

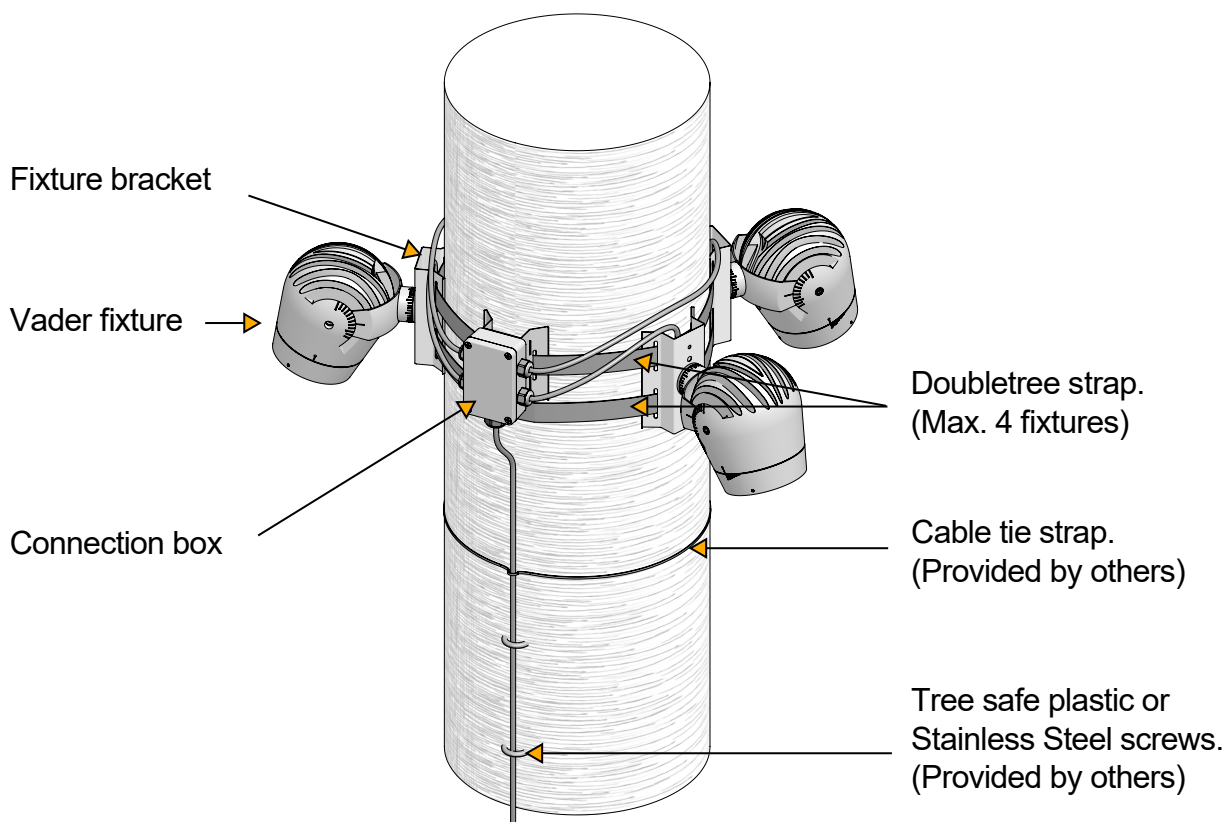


Tree Mounting Installation Accessories

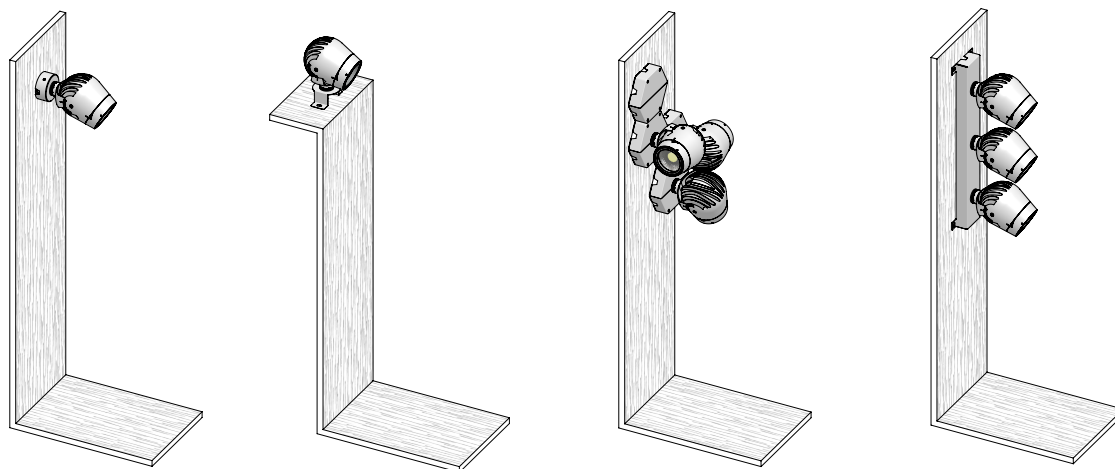
With Fixture Bracket - TTB01D(-)

Connection Box - TTC02S(-)

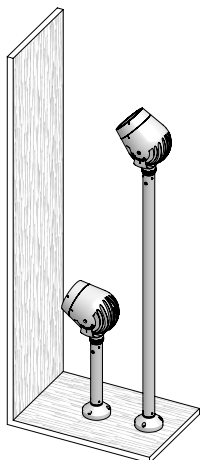
Tree Strap - TTS01D(-)



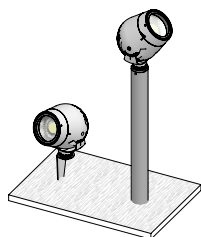
Installation Examples



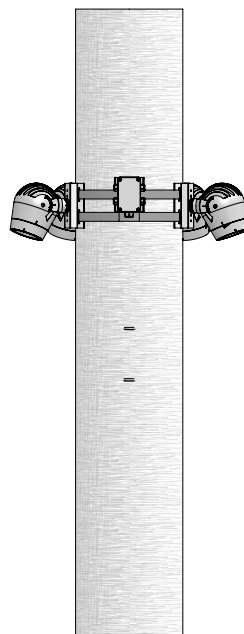
SURFACE



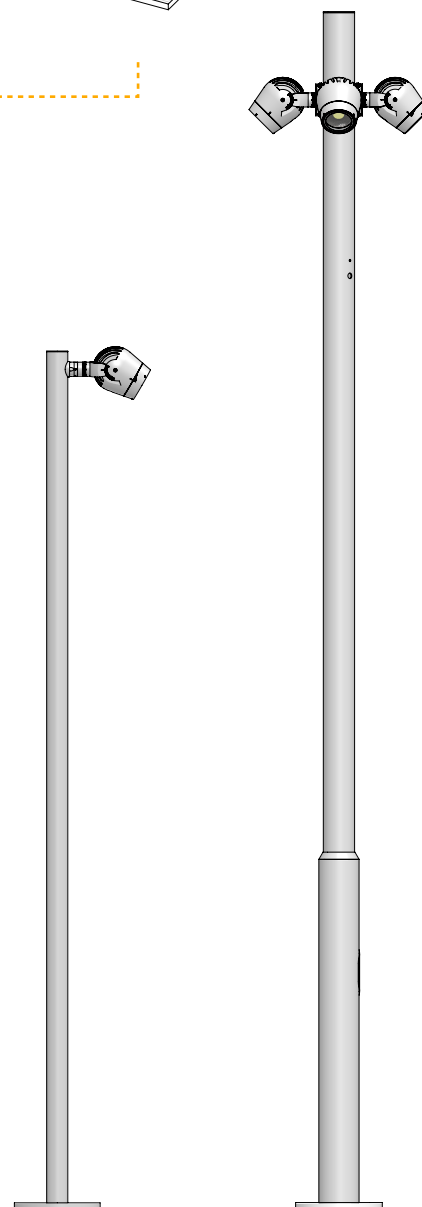
FLOOR



LANDSCAPE



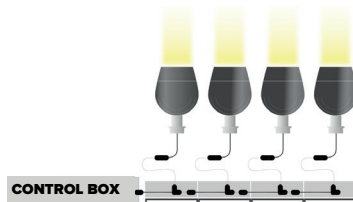
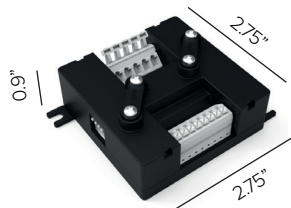
TREE



POLE

Control and Power Supply

CONTROL (REQUIRED)



Control pod. Three-In-One Smart control system (0-10V / DALI / DMX). Can be mounted inside installation accessories or 4"x4" Junction Box, etc.

Each Control Pod:

0-10V 1ea two channel control zone for up to 30 fixtures.

DALI up to 64ea independently controlled fixtures.

DMX two channel up to 64ea independently controlled fixtures.

Part No. A035

POWER SUPPLY (REQUIRED)

ENCLOSURE

Part No.	Wattage	Control	Dim Range	Rating	In / Out Voltage	Certification	Dimensions (Enclosure)	Description
PS052	40W	0-10V / DALI / DMX via control pod	1% 0-10V 0% DALI / DMX	NEMA3R	120-277V / 48V	UL CLASS 2	6.3" x 10.79" x 2.17"	MEAN WELL HLG ELECTRONIC DRIVER.
PS051	60W	0-10V / DALI / DMX via control pod	1% 0-10V 0% DALI / DMX	NEMA3R	120-277V / 48V	UL CLASS 2	6.3" x 10.79" x 2.17"	MEAN WELL HLG ELECTRONIC DRIVER.
PS050	96W	0-10V / DALI / DMX via control pod	1% 0-10V 0% DALI / DMX	NEMA3R	120-277V / 48V	UL CLASS 2	6.3" x 10.79" x 2.17"	MEAN WELL HLG ELECTRONIC DRIVER.

*NON-DIMMABLE, DIMMING ACHIEVED FROM DIRECT CONTROL POD NOT THROUGH DRIVER.

MAX FIXTURES PER DRIVER

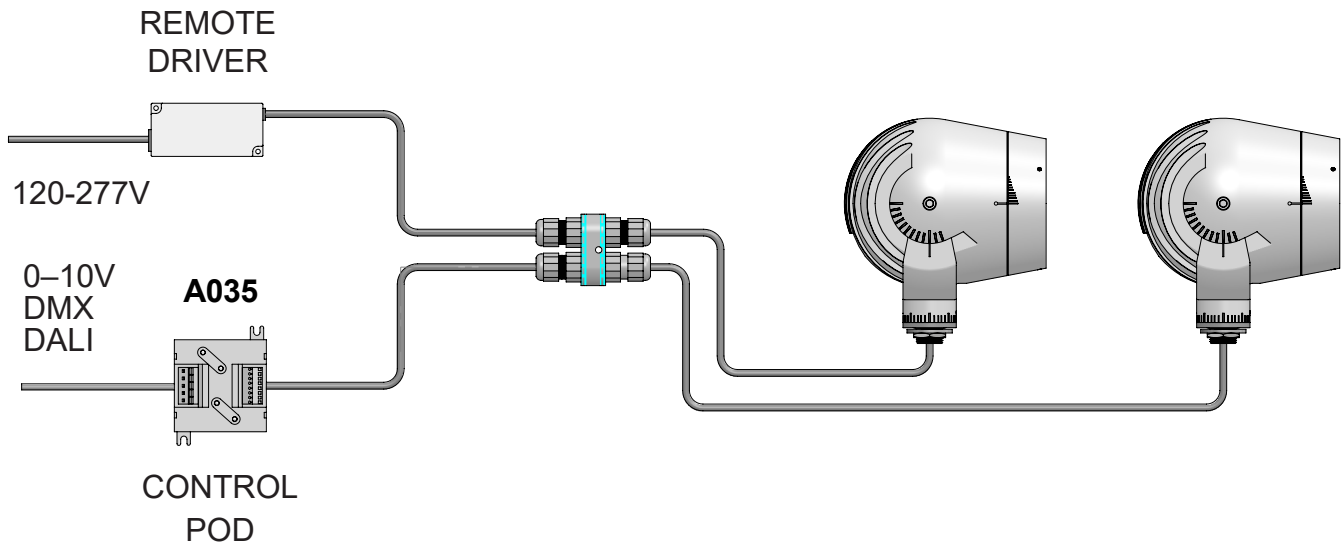
Fixture Wattage

Driver Wattage

40W 60W 96W

14W 2 3 6

Installation Diagram



Can be mounted inside installation accessories or 4"x4" Junction Box, etc.

0-10V 1ea two channel control zone for up to 30 fixtures.

DALI up to 64ea independently controlled fixtures.

DMX two channel up to 64ea independently controlled fixtures.

Maintenance

This fixture was designed and manufactured for a durable, long lasting use with minimum care. To ensure the maximum lifespan of this product, we encourage our customer to provide a quality visual inspection of the fixture and installation accessories every six months. If there are any visible signs of issues (i.e moisture or dust) during the inspection, please clean any of the dust or moisture with a soft cloth and check to make sure that any of the fixtures are still operating normally. If there are any issues regarding the fixture please contact us as we will assist the situation at hand.

Support

Any questions, problems, or comments you have please feel free to contact our Customer Service department during our business hours Monday-Friday 8am-5pm via: Email: usaorders@targetti.com
Phone: (714) 513-1991

Visit our website: <http://www.targettiusa.com>