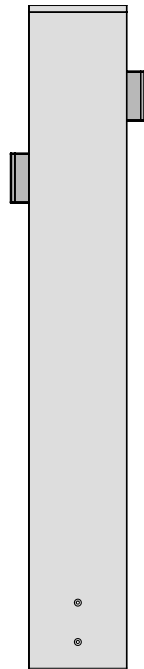
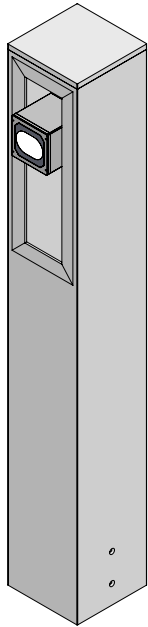




LUCERA BOLLARD LUCB

LUCERA BOLLARD WITH PROFESSIONAL ADJUSTABLE FLOODLIGHT PROJECTORS



WARNING

To ensure a maximum efficient use of the product, read the instructions before proceeding installment.



This fixture must be installed by a licensed and qualified electrician. The installer must comply with NEC and local building codes when installing the fixture



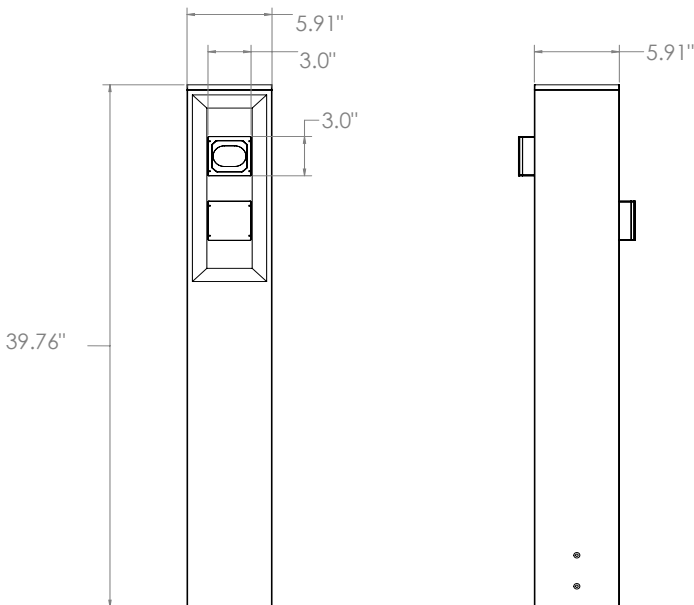
Electrical current can cause painful shock, serious injury, or even death. Make sure you turn off the power supply, ground fixture(s), and make sure all electrical connections are correct and secured tightly



For use in IP66 installations.



Keep the label of the original packaging if any eventual future claims are needed



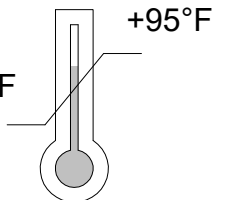
120-277 VAC



IK 09



-13°F



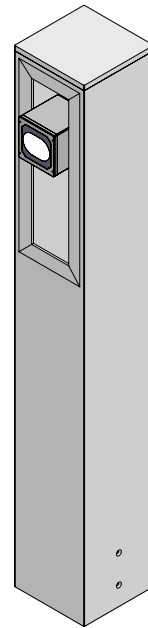
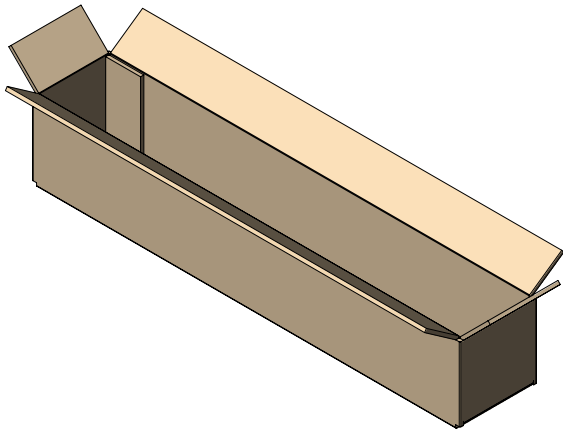
If in doubt about the symbols please refer to catalog or website

Table of Contents

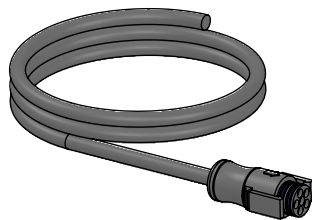
Packaging Contents	Pg.2
Mounting Base	Pg.3/4
Mounting Installation	Pg. 5/6
Fixture Aiming	Pg. 7
Optical Accessories	Pg. 8
Maintenance / Support	Pg. 9

Packaging Contents / Dimensions

39.76" FIXTURE IN 42"x 8"x 8" BOX@



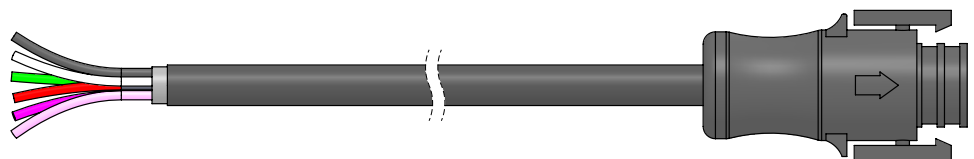
LUCERA BOLLARD INCLUDE 2
LUMINAIRE CUBE.



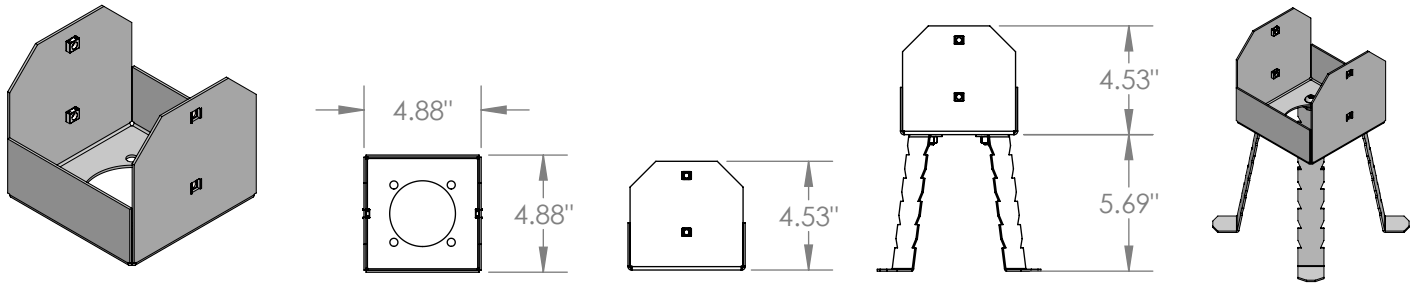
4ft Standard IP67 Lead Cable Connector

Conductor Callout

IP68 DSM&T anti-wicking
quick disconnect
Black = line voltage
White = neutral
Green = ground
Red = Do Not Use
Purple = positive 0-10V
Pink = negative 0-10V 600V rated.

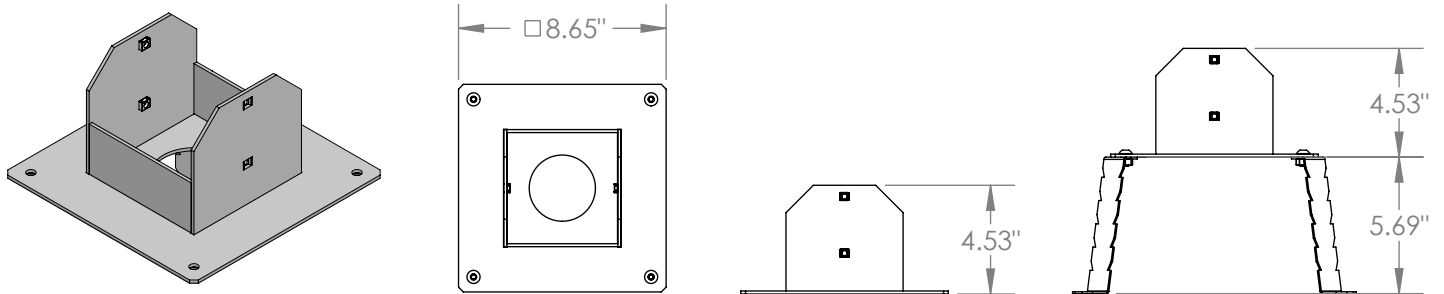


Mounting (Required)



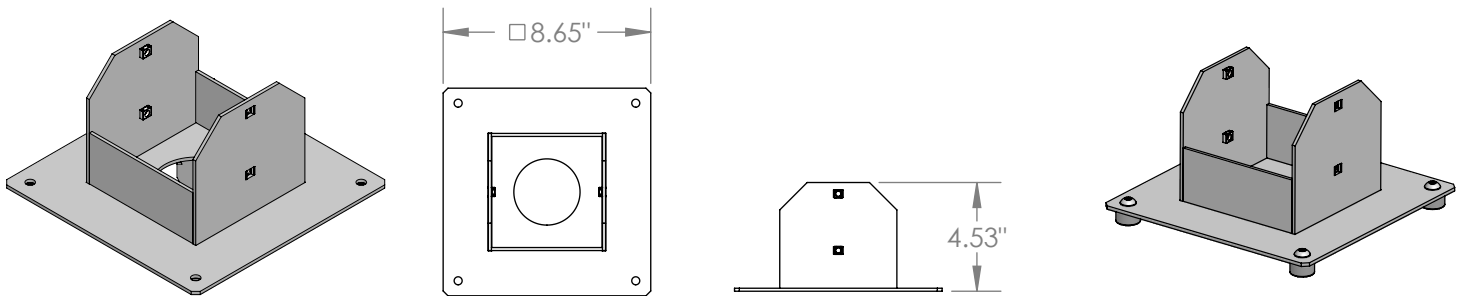
Trimless mounting base with ground anchor fixing rods for installation in concrete. AISI 316 stainless steel. Mounting bolts included. **Required for use with 1US2530 by NEC.**

Part No. 1USA012A



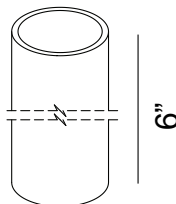
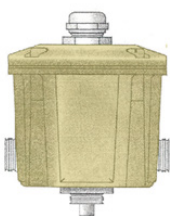
Powder coated mounting base with ground anchor fixing rods for installation in concrete. AISI 316 stainless steel. Mounting bolts included. **Required for use with 1US2530 by NEC.**

Part No. 1USA012C(*)



Powder coated mounting plate for surface installation outside the post. AISI 316 stainless steel compatible with dowels to be inserted into 4 holes, Ø 0.34" Dia. for use with 5/16" bolts maximum. Anchor bolts not included. **Required for use with 1US2530 by NEC.**

Part No. A012C(*)

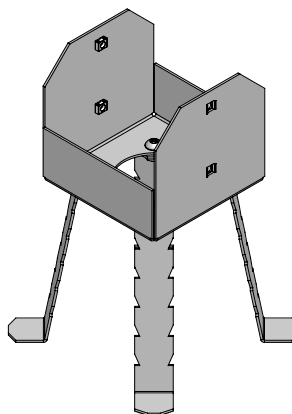
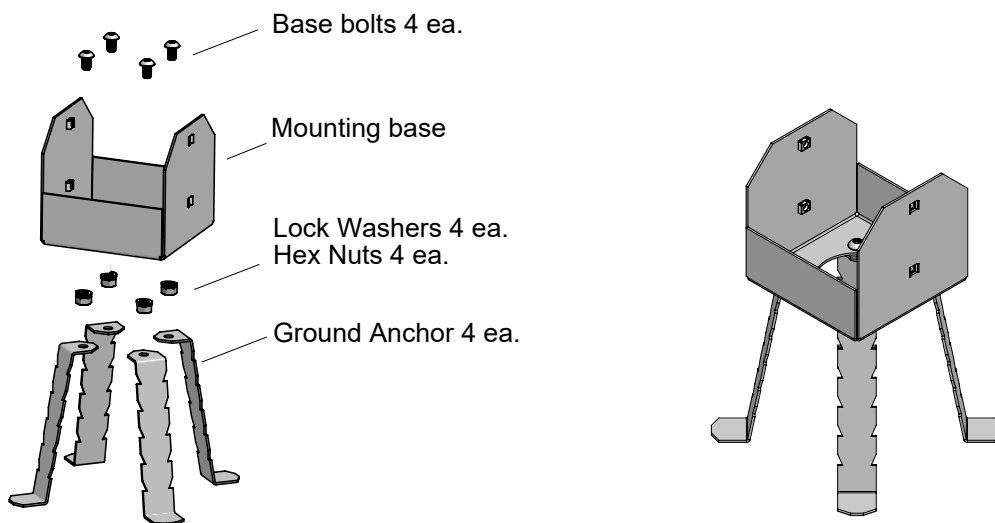
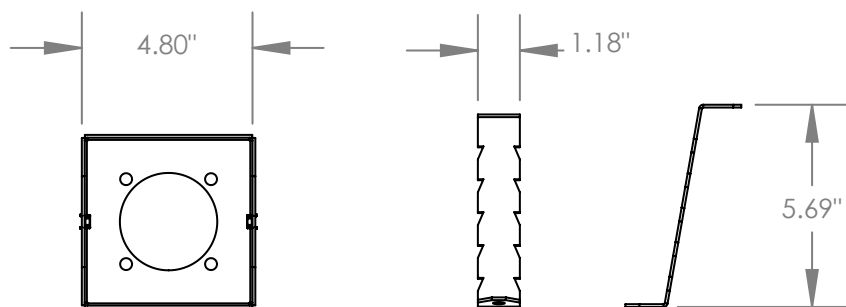


Direct burial brass ingrade j-box with PVC sleeve. Features stainless steel cover screws and strain relief for power cord, (2) 3/4" NPT bottom holes and (2) 3/4" NPT side holes. Includes (4) 3/4" to 1/2" adapters and (2) 1/2" NPT plugs. **(REQUIRED by NEC).**

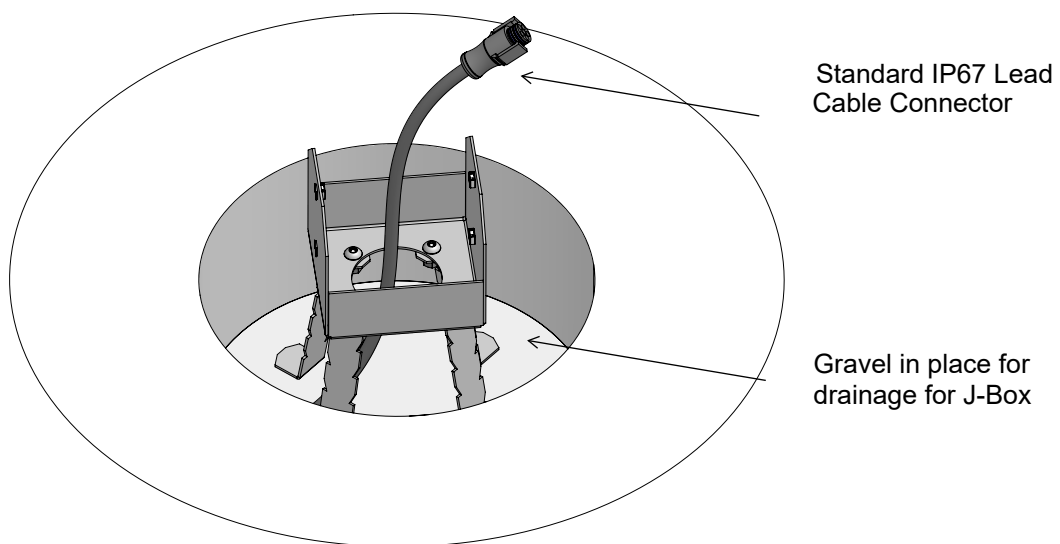
Part No. 1US2530

Mounting Base (Sold Separately)

1USA012A - TRIMLESS MOUNTING BASE



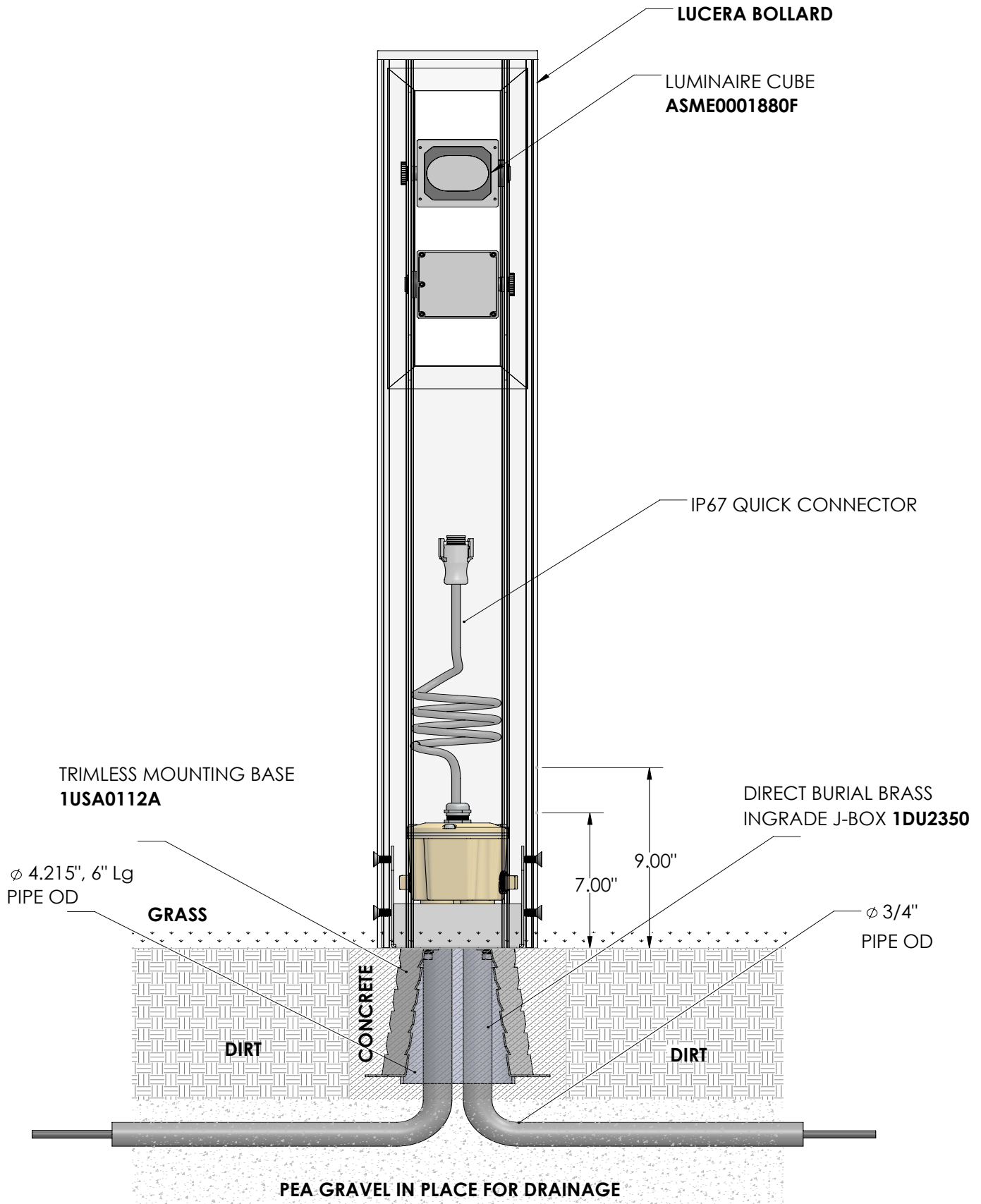
*Assembled with base



Stainless Steel base with rods for concrete pouring
*Refer to mounting base installations instructions

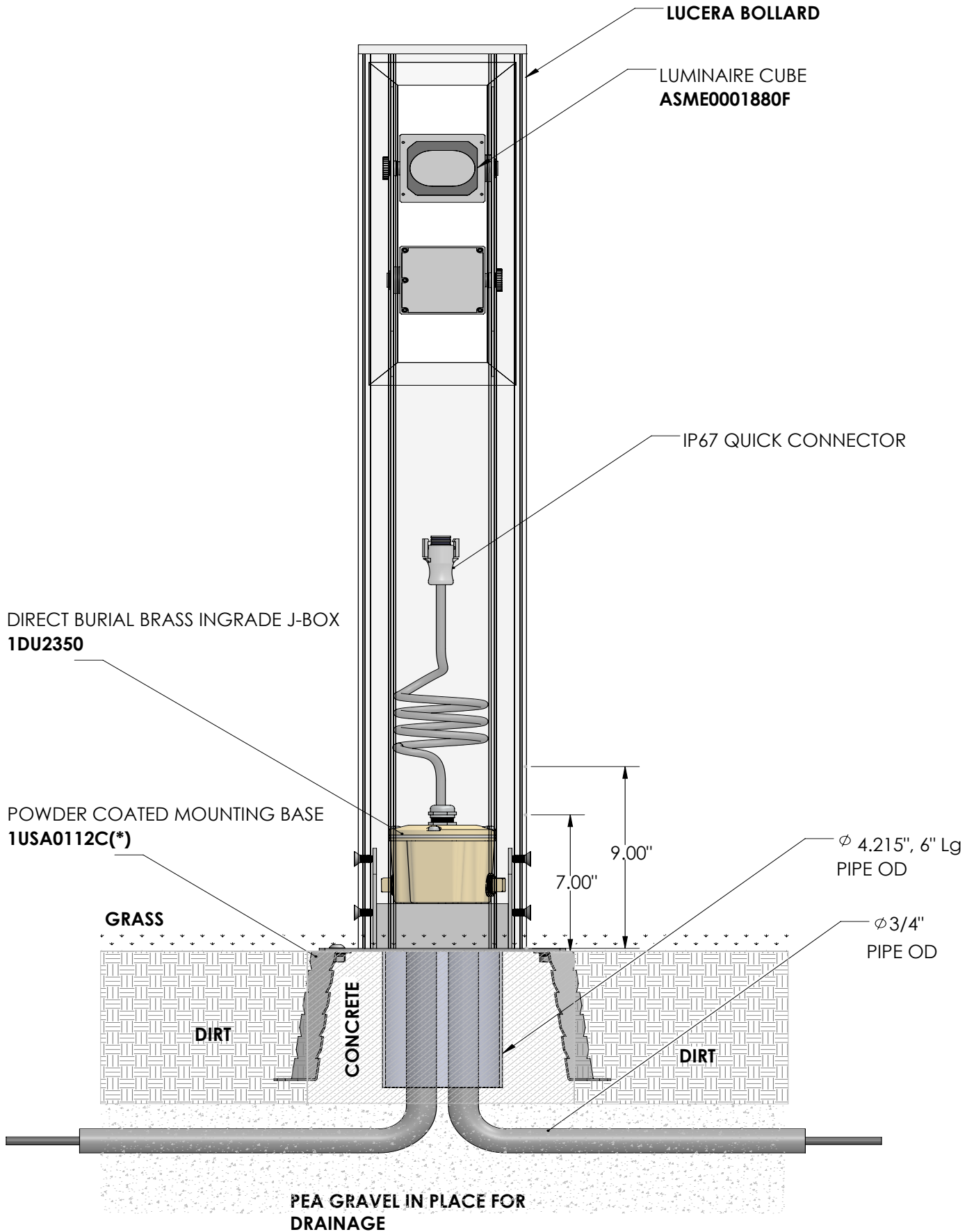
Bollard Mounting with Concrete Pedestal

1USA012A - TRIMLESS MOUNTING BASE



Bollard Mounting with Concrete Pedestal

1USA012C- POWER COATED MOUNTING BASE

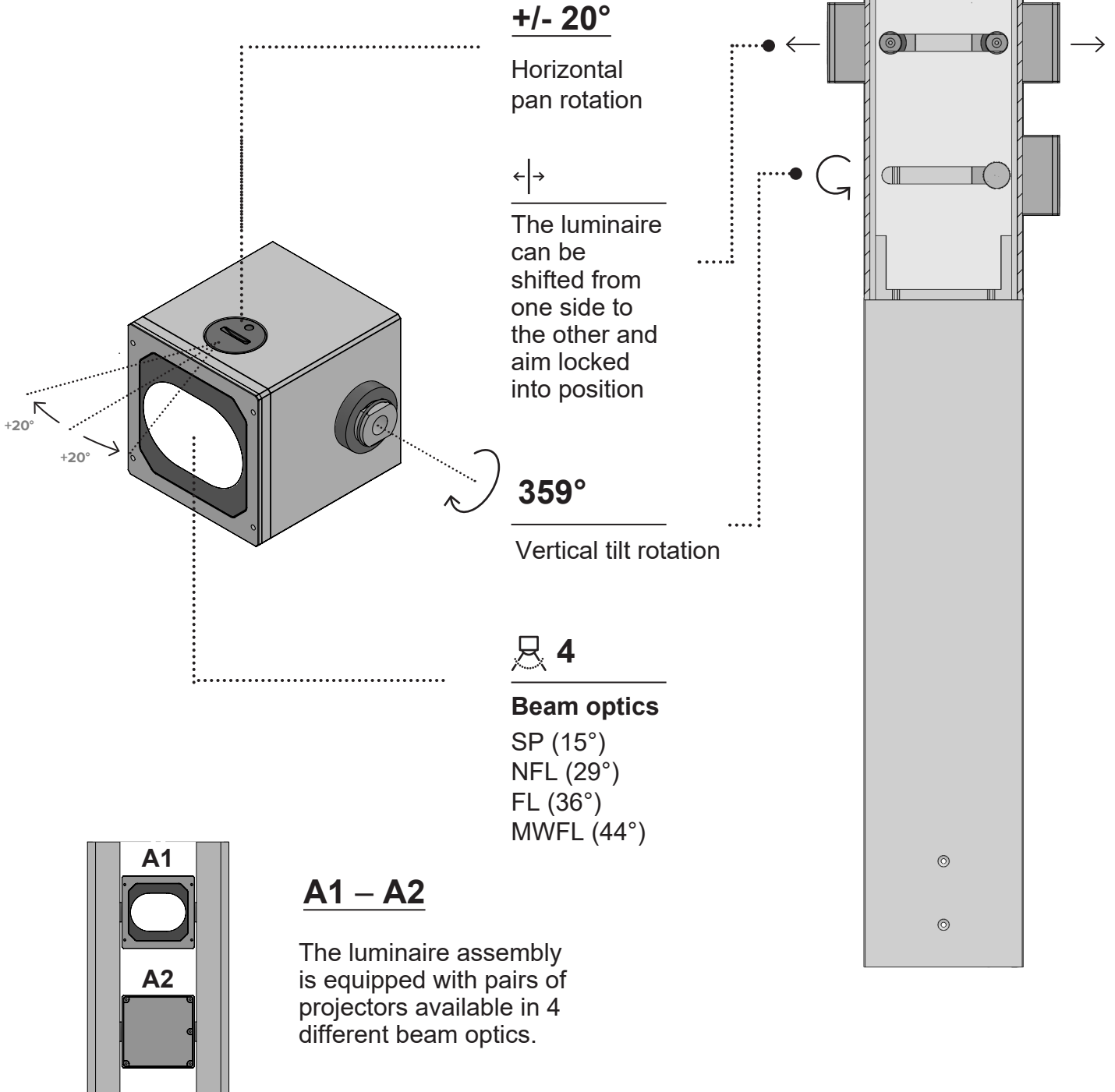


Fixture Aiming

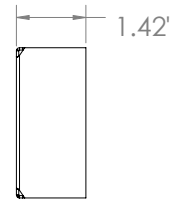
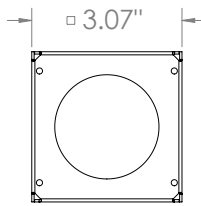
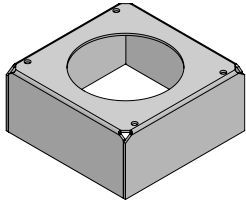
Maximum Flexibility

Every luminaire has the ability to be shifted to either side of the pole and rotated by 359° vertical tilt rotation with variable luminaire positions, flush or extracted.

In addition, each luminaire optic can be externally rotated by +/-20° horizontal pan rotation for ultimate flexibility.

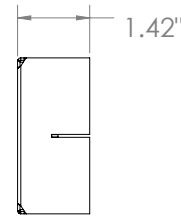
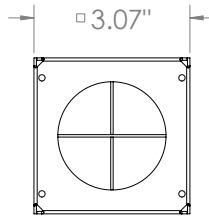
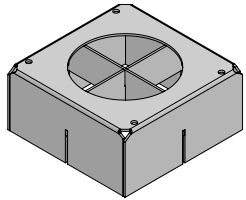


Optical Accessories (Optional)



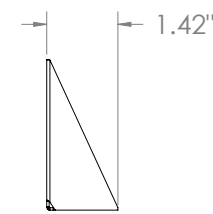
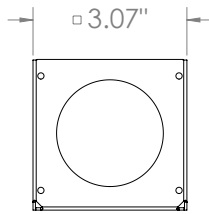
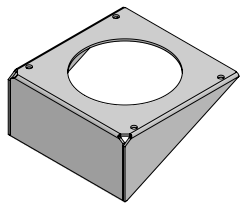
Symmetric snout. Powder coated stainless steel. **Not compatible with A011B and A011C.**

Part No. **1USA011A(*)**



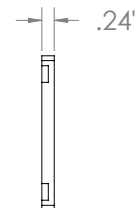
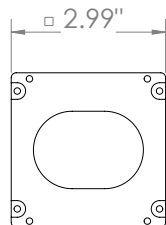
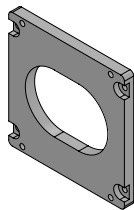
Anti glare louver with removable baffles for different levels of glare control. Powder coat stainless steel. **Not compatible with A011A and A011C.**

Part No. **A011B(*)**



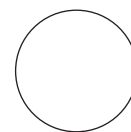
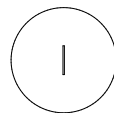
Asymmetric snout. Powder coated stainless steel. **Not compatible with A011A and A011B.**

Part No. **A011C(*)**



Filter holder ring. CNC machined anodized and powder coated aluminum. **Required for use of all filters.**

Part No. **A011D(*)**



∅ 73mm

'Blade of Light' linear spread lens. PMMA holographic filter. **To be completed with A011D dedicated holder ring. Does not apply toward maximum accessory count.**

Part No. **A011E**

Maintenance

This fixture was designed and manufactured for a durable, long lasting use with minimum care. To ensure the maximum lifespan of this product, we encourage our customers to provide a quality visual inspection of the fixture and installation accessories every six months. If there are any visible signs of issues (i.e moisture or dust) during the inspection, please clean any of the dust or moisture with a soft cloth and check to make sure that all fixtures are still operating normally. If there are any issues regarding the fixture please contact us as we will assist the situation at hand.

Support

Any questions, problems, or comments you have please feel free to contact our Customer Service department during our business hours Monday-Friday 8am-5pm via: Email: usaorders@targetti.com Phone: (714) 513-1991

Visit our website: <http://www.targettiusa.com>