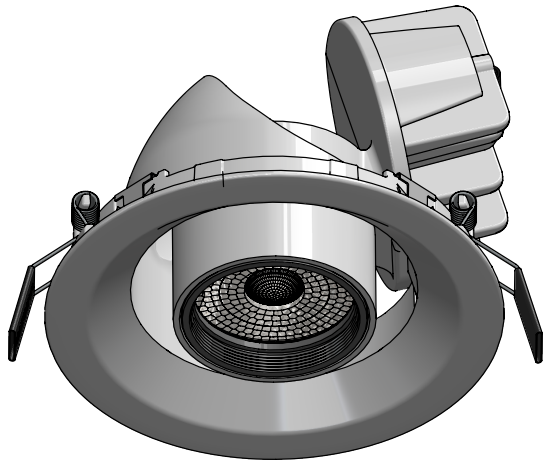




EVO EXTRACTABLE 125

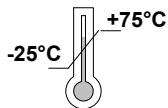
CEE125-

EXTRACTABLE 5" LED
DOWNLIGHT PROJECTOR



120/277V
50/60Hz

IP20



If in doubt about the symbols please
refer to catalog or website

WARNING

**To ensure a maximum efficient use
of the product, read the instructions
before proceeding installment.**



This fixture must be installed by a
licensed and qualified electrician. The
installer must comply with NEC and
local building codes when installing the
fixture



Electrical current can cause painful
shock, serious injury, or even death.
Make sure you turn off the power
supply, ground fixture(s), and make
sure all electrical connections are
correct and secured tightly



For use in IP20 installations.



Keep the label of the original
packaging if any eventual future claims
are needed

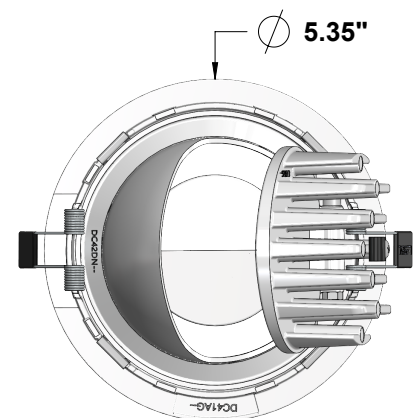
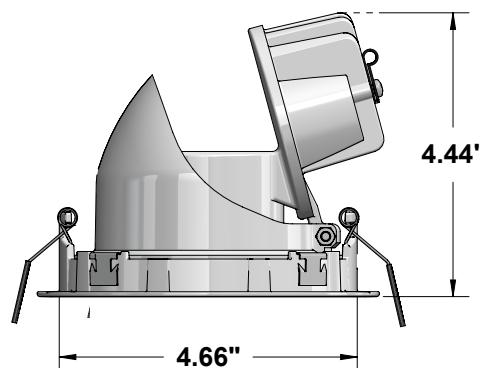
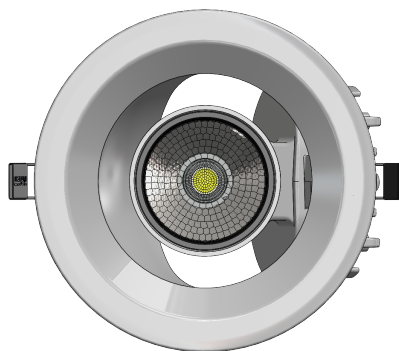
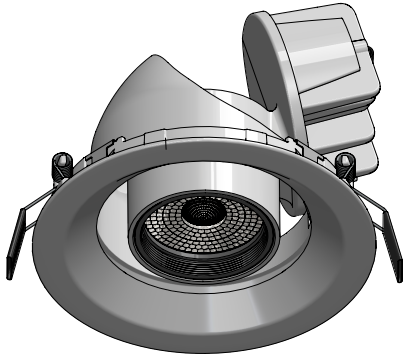


Table of Contents

Packaging Contents / Dimensions
Surface Installation
Installation Accessories
Diagram
Maintenance / Support

Pg.2
Pg.3/5
Pg.6/9
Pg.10
Pg.11

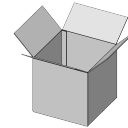
Packaging Contents / Dimensions



CEE125 - Fixture 1ea.

Finish

- Plaster White
- Deep Black

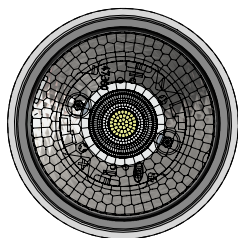


Box 6"x 6"x 7" @1.54lbs

SPECIFICATION INFORMATION

1 - PRODUCT CODE	2 - TYPE	3 - OPTICS	4 - WATTAGE	5 - KELVIN	6 - FIXTURE FINISH
CEE — EVO Extractable	125 — 5" Dia.	SP — SP 13° FL — FL 29° MF — MWFL 41°	L1 — 15W L2 — 20W	27 — 2700K 30 — 3000K 35 — 3500K 40 — 4000K	PW — Plaster White DB — Deep Black
7 - INSTALLATION	8 - OPTICAL ACCESSORIES				
Non-IC Housing See section for details	Linear Spread Lens See section for details				
IC Housing See section for details	Honeycomb Louver See section for details				

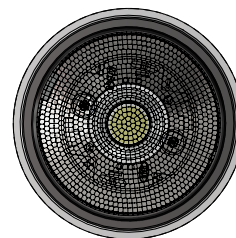
OPTICAL



SP



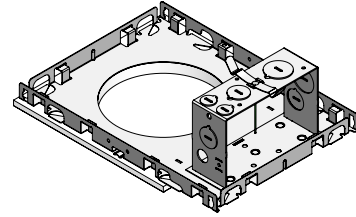
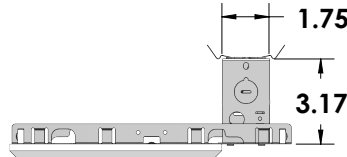
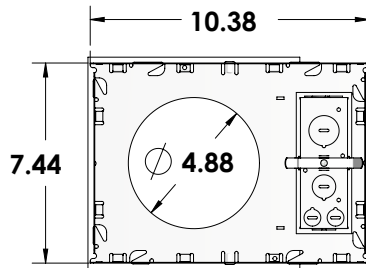
FL



MF

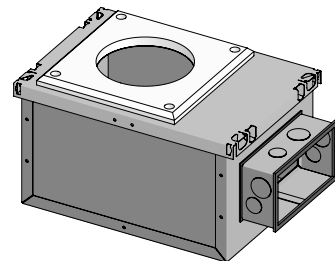
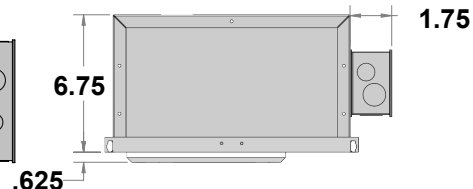
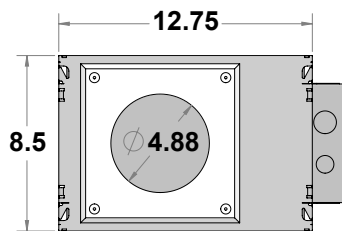
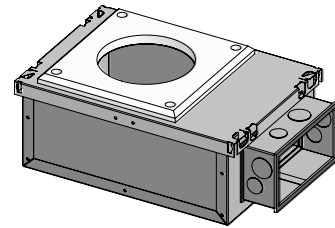
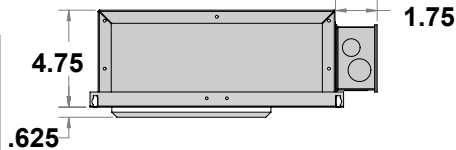
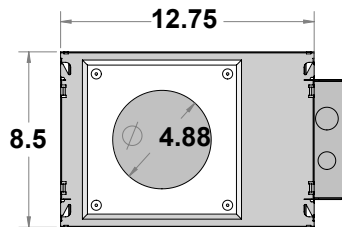
Installation Accessories

INSTALLATION (REQUIRED)



Non-IC plaster frame with pre-installed 5/8" fiber board with cut out for ease of installation in drywall.

<i>Wattage</i>	L1(20W)	L2 (20W)
<i>Voltage</i>	120V	120V
<i>Part No.</i>	CCE125NCL112041	CCE125NCL212041
<i>Voltage</i>	277V	277V
<i>Part No.</i>	CCE125NCL127710	CCE125NCL227710



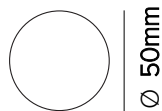
IC/Air tight housing with pre-installed 5/8" fiber board with cut out for ease of installation in drywall. Suitable for Chicago Plenum rated installation.

<i>Wattage</i>	L1(20W)	L2 (20W)
<i>Voltage</i>	120V	120V
<i>Part No.</i>	CCE125ICL112041	CCE125ICL212041
<i>Voltage</i>	277V	277V
<i>Part No.</i>	CCE125ICL127710	CCE125ICL227710

Installation Accessories

OPTICAL ACCESSORIES (OPTIONAL)

1T4721



'Blade of Light' linear spread lens. PMMA holographic filter.
MAXIMUM OF TWO ACCESSORY PER FIXTURE.

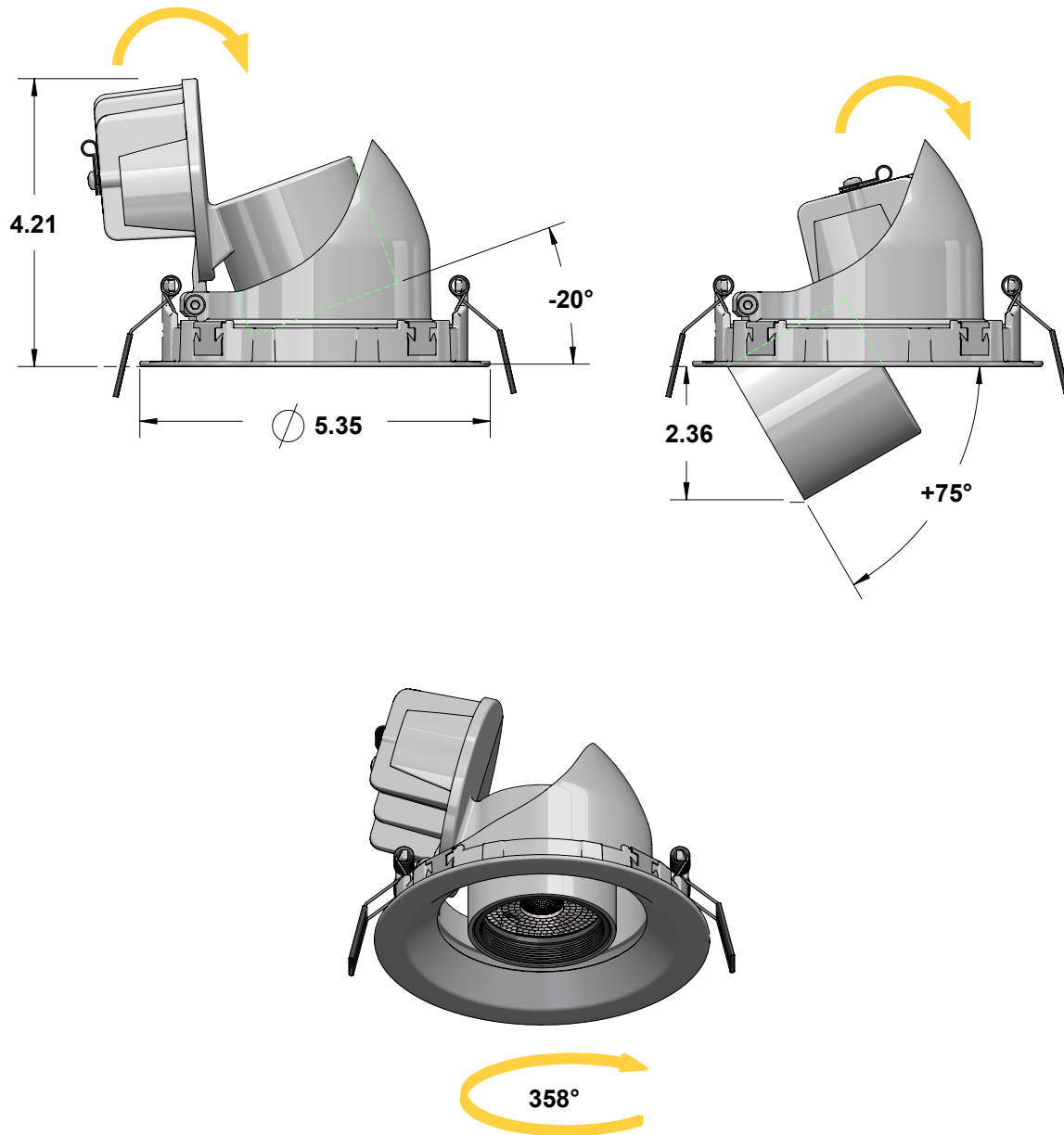
1T4722



Anti-glare louver. Lacquered metal honeycomb structure.
MAXIMUM OF TWO ACCESSORY PER FIXTURE.

Installation Instructions

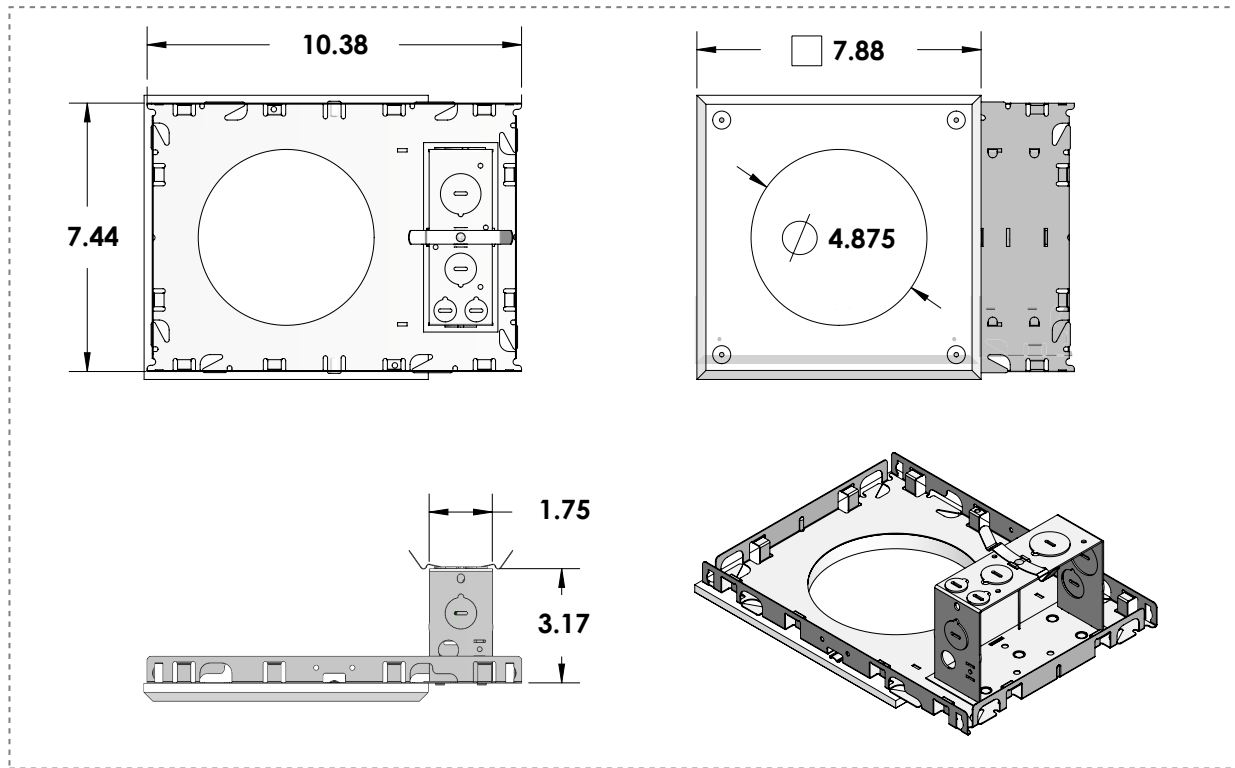
Key Features



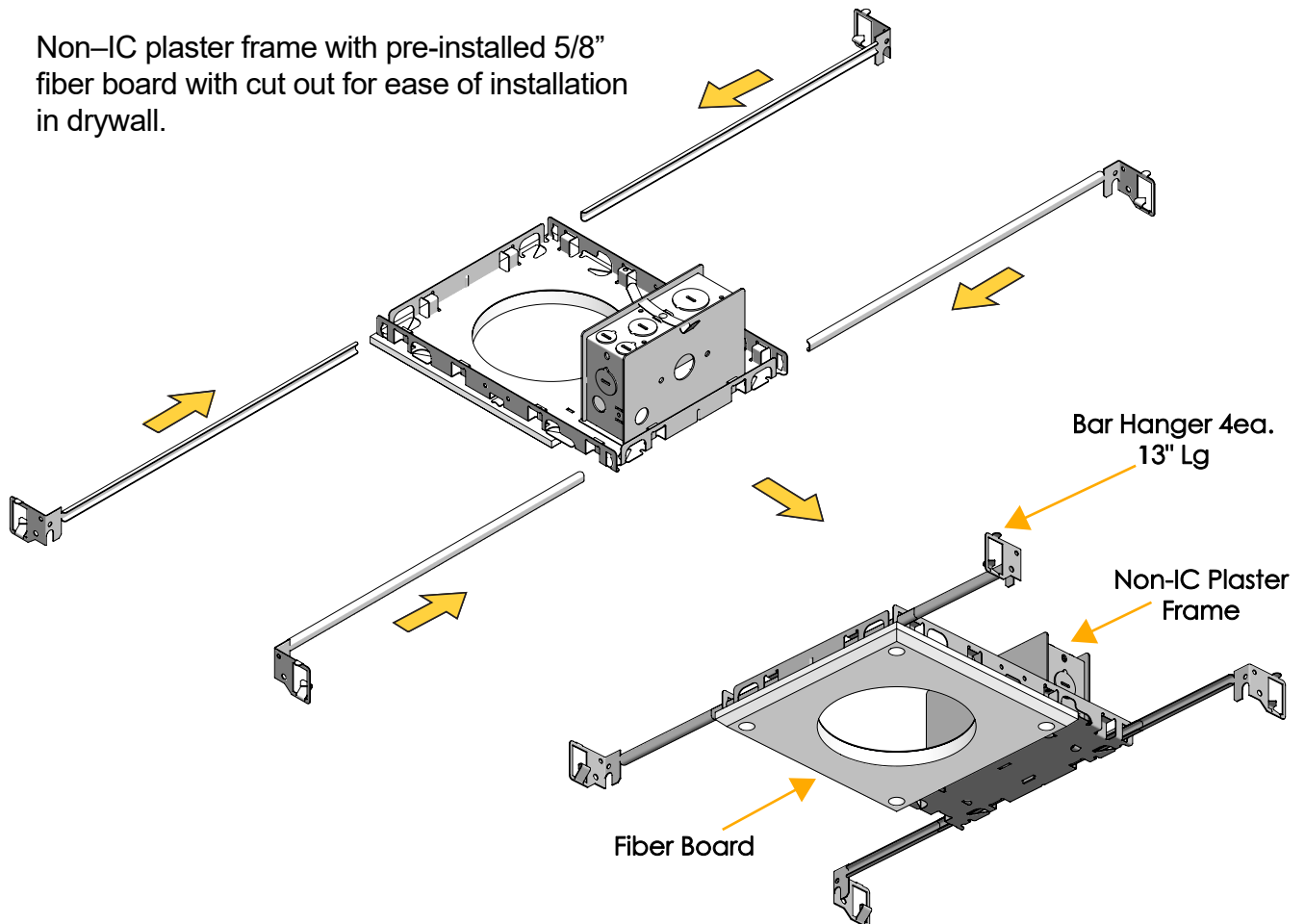
Friction rotation system with adjustability of the fixture from $-20^\circ/+75^\circ$ on a vertical plane and can be manually aimed to 358° on a horizontal plane.

Installation Instructions

Non-IC plaster frame with pre-installed 5/8"

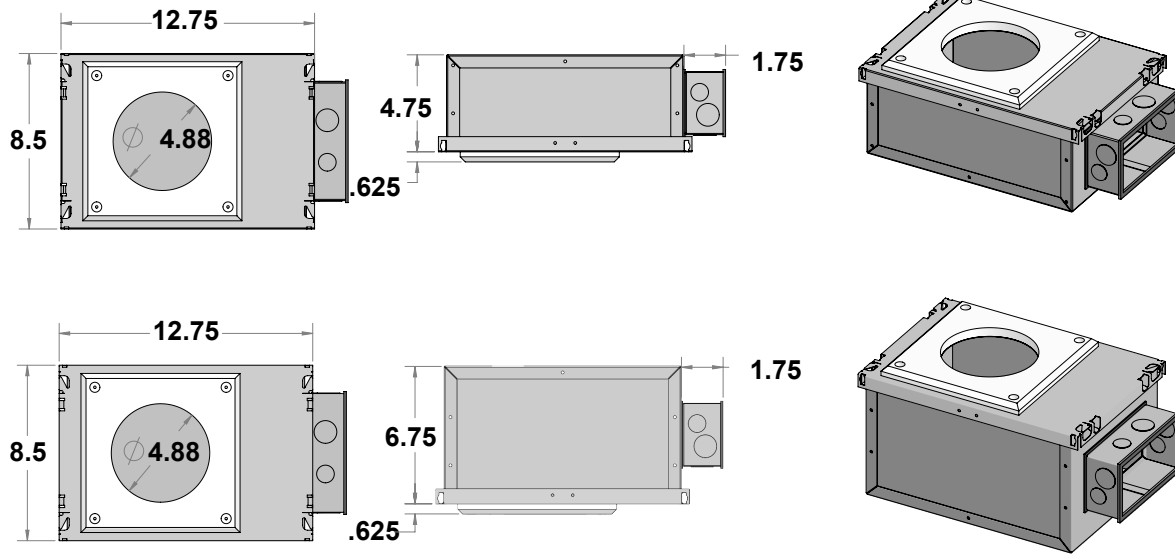


Non-IC plaster frame with pre-installed 5/8" fiber board with cut out for ease of installation in drywall.

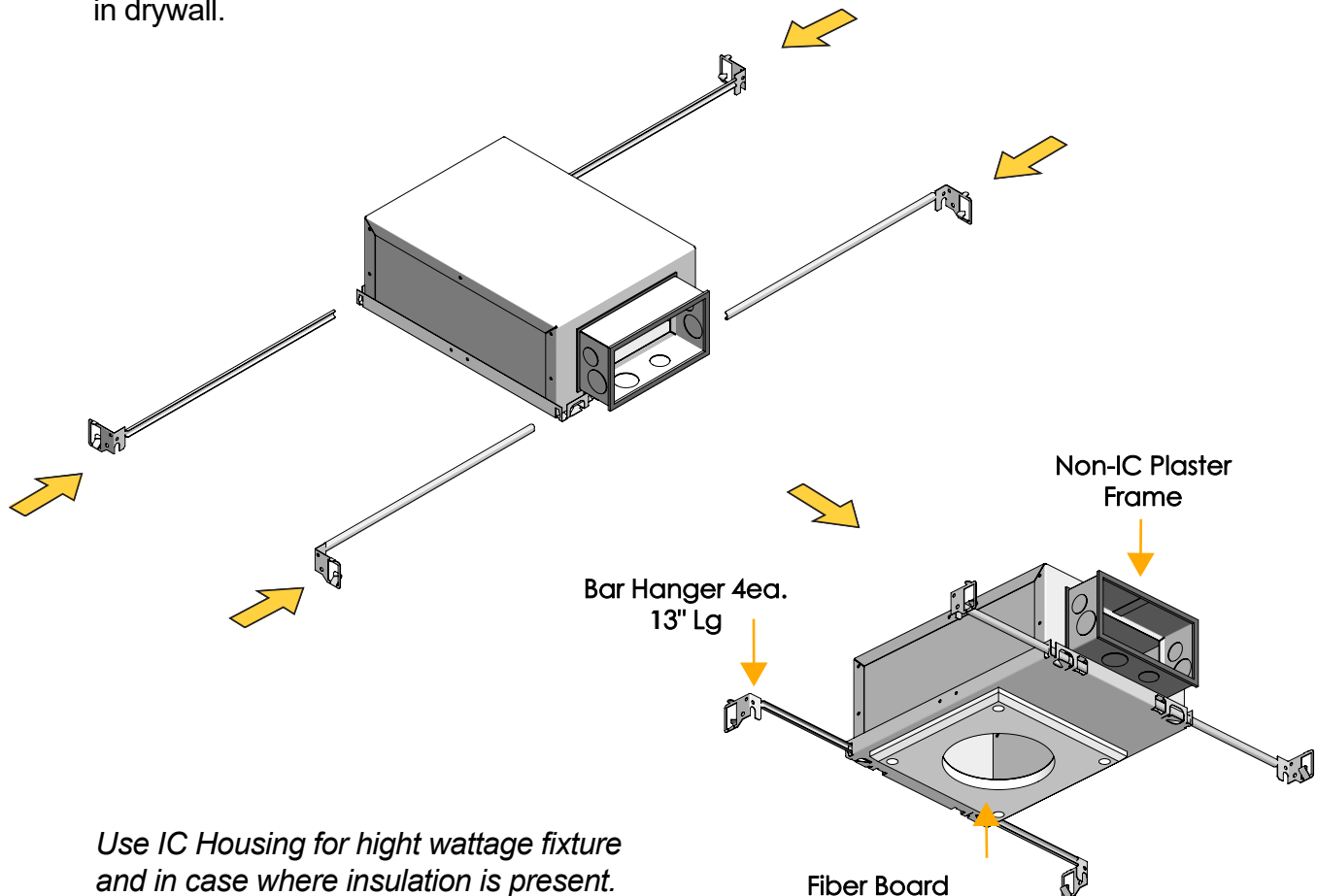


Installation Instructions

IC/Air tight housing with pre-installed 5/8"



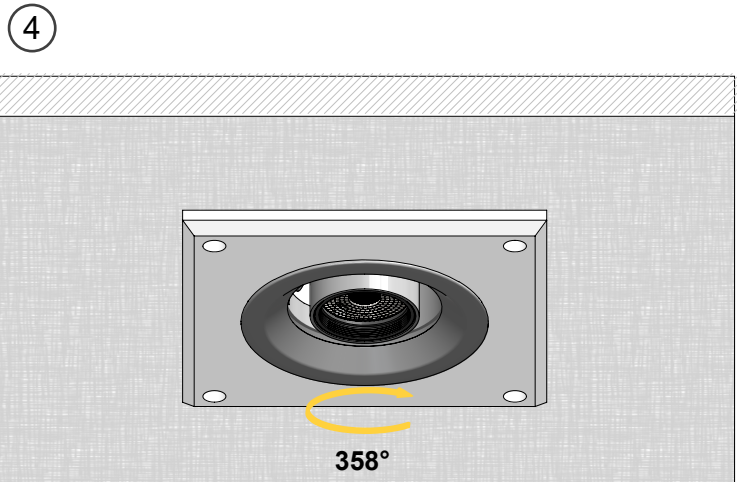
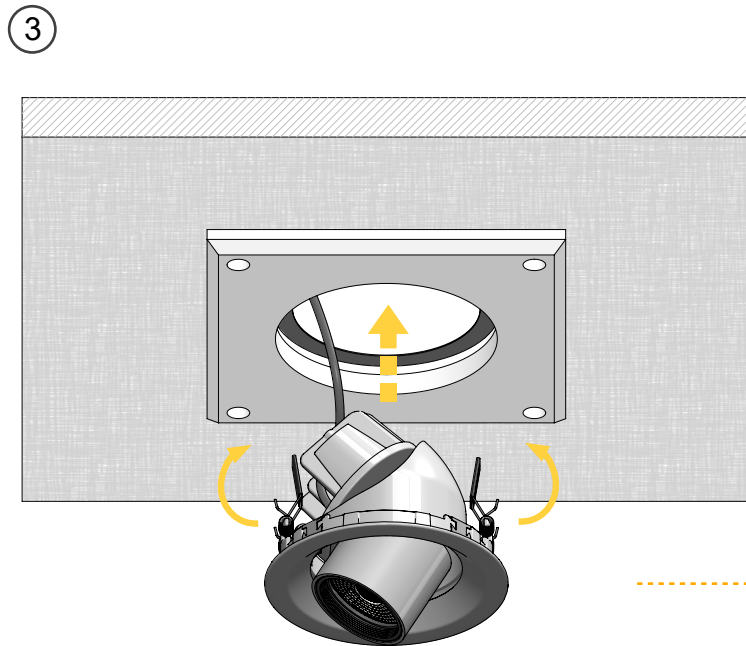
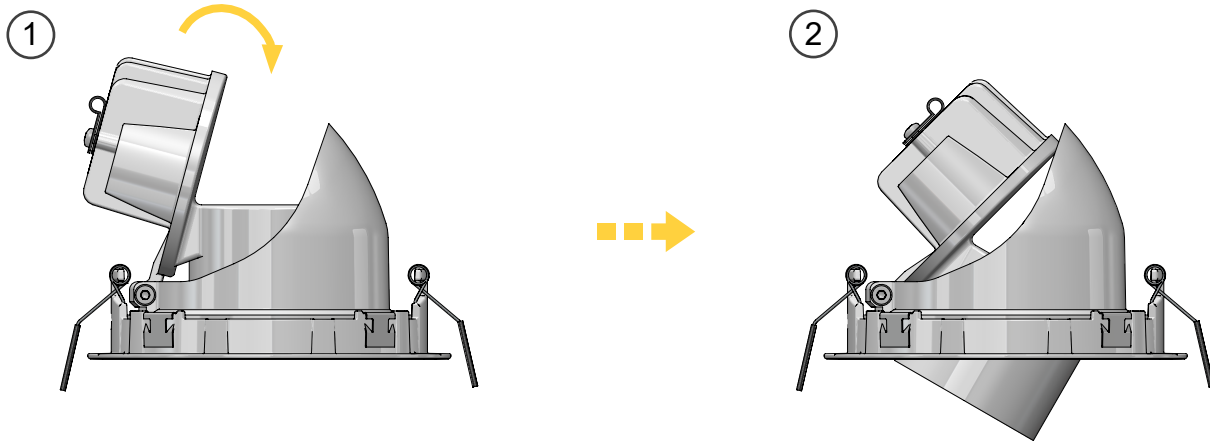
IC Air tight housing with pre-installed 5/8"
fiber board with cut out for ease of installation
in drywall.



*Use IC Housing for high wattage fixture
and in case where insulation is present.*

Installation Instructions

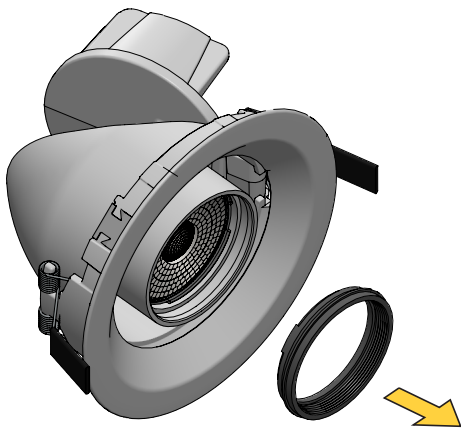
Non-IC plaster frame with pre-installed 5/8"



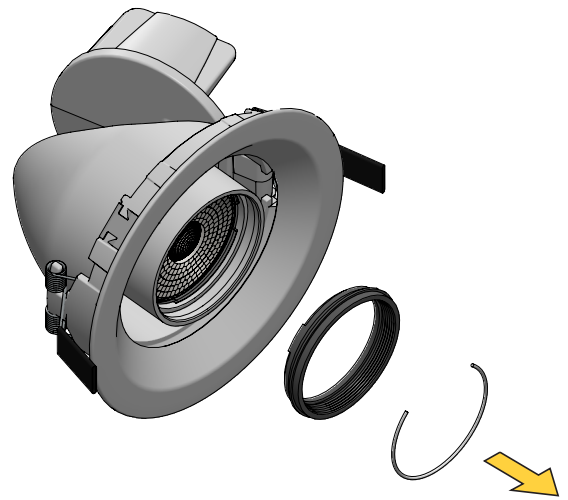
Accessory Assembly

Blade light filter & Anti-glare grid

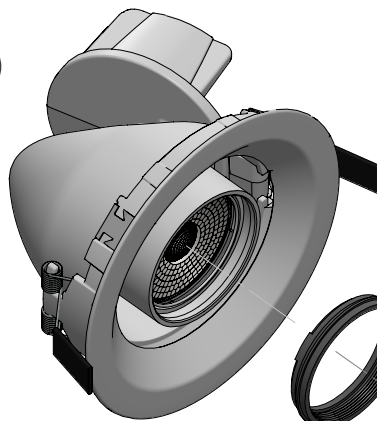
①



②



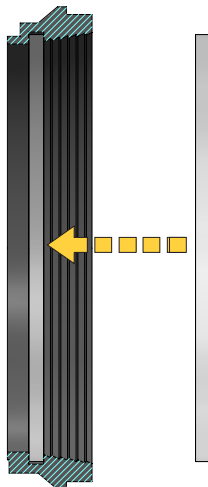
③



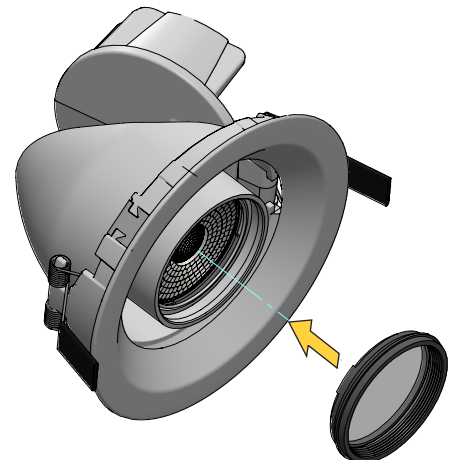
Attention the safety spring is present only in specific versions

1T4322
Anti-glare grid

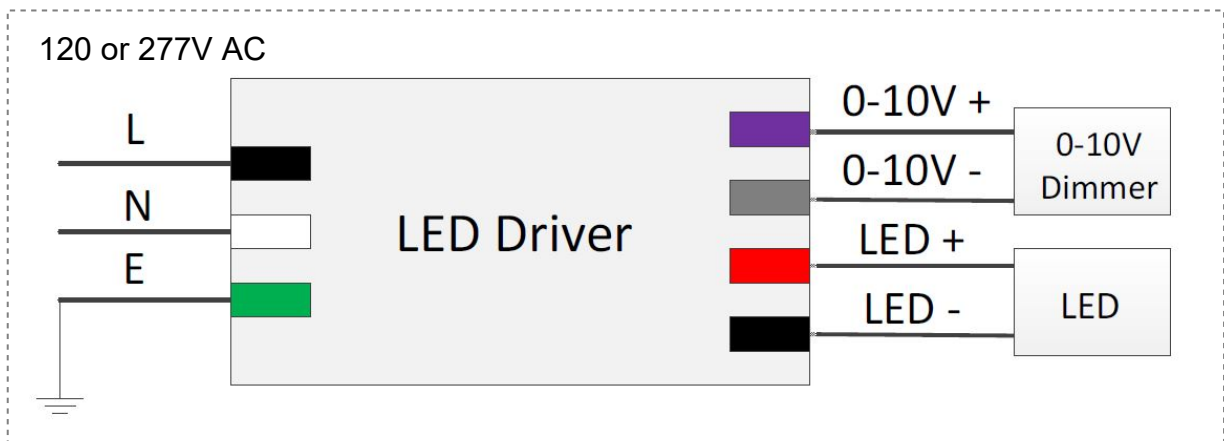
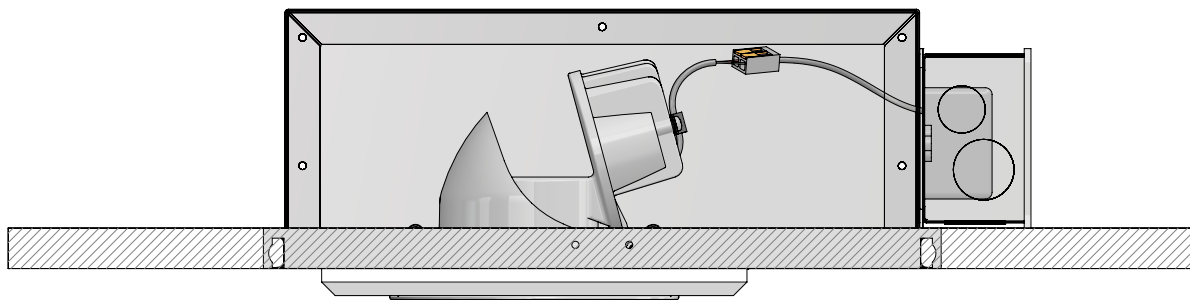
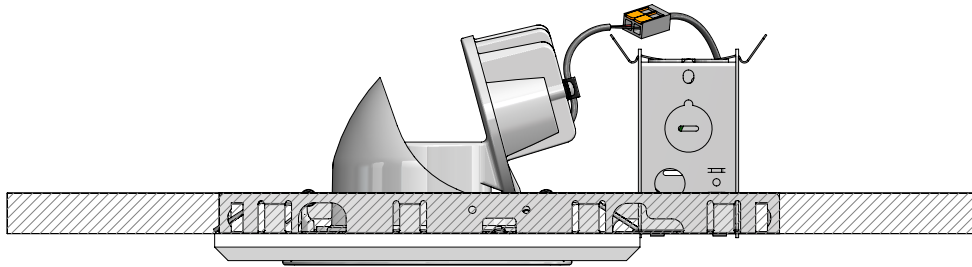
1T4721
Blade light filter



④



Diagram



Maintenance

This fixture was designed and manufactured for a durable, long lasting use with minimum care. To ensure the maximum lifespan of this product, we encourage our customers to provide a quality visual inspection of the fixture and installation accessories every six months. If there are any visible signs of issues (i.e moisture or dust) during the inspection, please clean any of the dust or moisture with a soft cloth and check to make sure that any of the fixtures are still operating normally. If there are any issues regarding the fixture please contact us as we will assist the situation at hand.

Support

Any questions, problems, or comments you have please feel free to contact our Customer Service department during our business hours Monday-Friday 8am-5pm via: Email: usaorders@targetti.com
Phone: (714) 513-1991

Visit our website: <http://www.targettiusa.com>