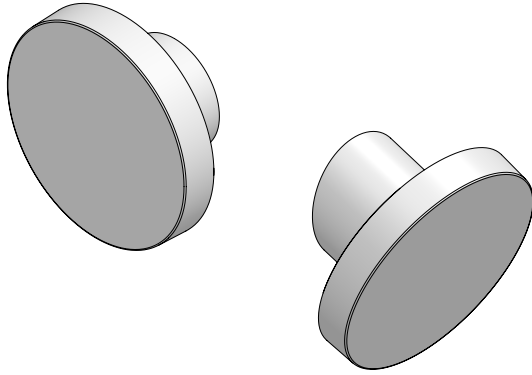


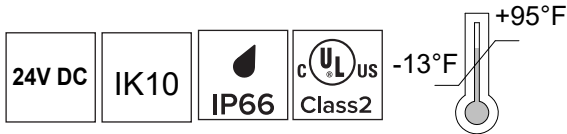


CHIOBO WALL REMOTE

CWFRP_
CWARP_



If in doubt about the symbols please refer to catalog or website



WALL MOUNT LED FIXTURE

WARNING

To ensure a maximum efficient use of the product, read the instructions before proceeding installment.



This fixture must be installed by a licensed and qualified electrician. The installer must comply with NEC and local building codes when installing the fixture



Electrical current can cause painful shock, serious injury, or even death. Make sure you turn off the power supply, ground fixture(s), and make sure all electrical connections are correct and secured tightly

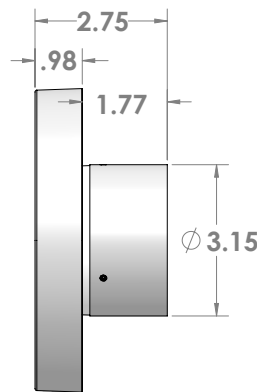


For use in IP66 installations.



Keep the label of the original packaging if any eventual future claims are needed

FLAT



ANGLED

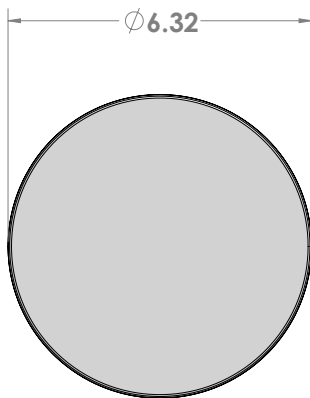
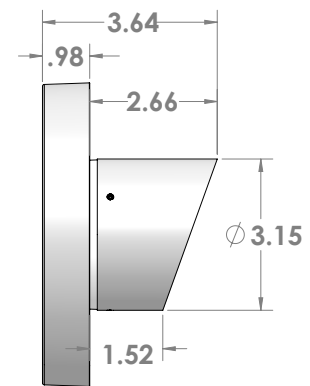
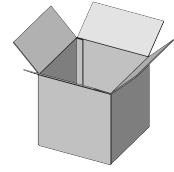
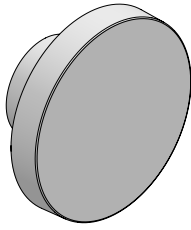


Table of Contents

Packaging Contents	Pg.2
Mounting Base	Pg.3
Remote Power Supply Options	Pg.4/7
Maintenance / Support	Pg.8

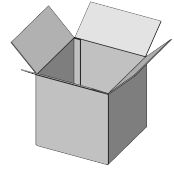
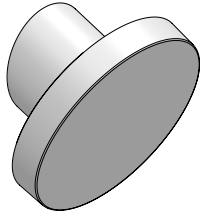
Packaging Contents

CWFRP_
FLAT




Box 8"x8"x5" @2.3lbs

CWARP_
ANGLED



Box 8"x8"x5" @2.3lbs

 Ferrite Dark Grey

 Black

 White

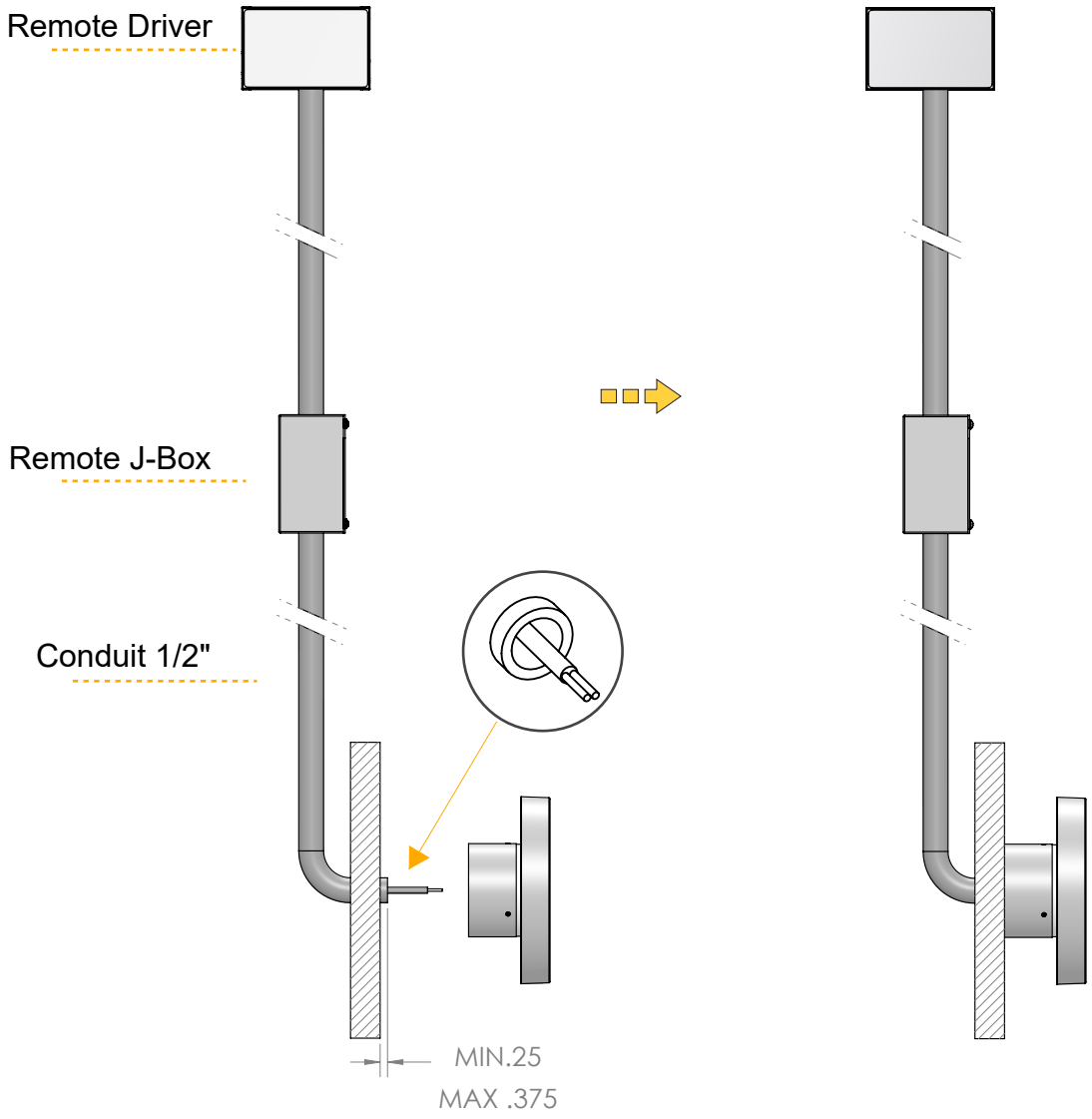
 Bronze

 Sandstone Grey

 Heritage Brown

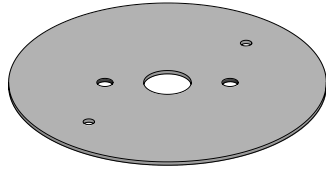
Mounting Options

Remote Driver + Conduit + J-Box

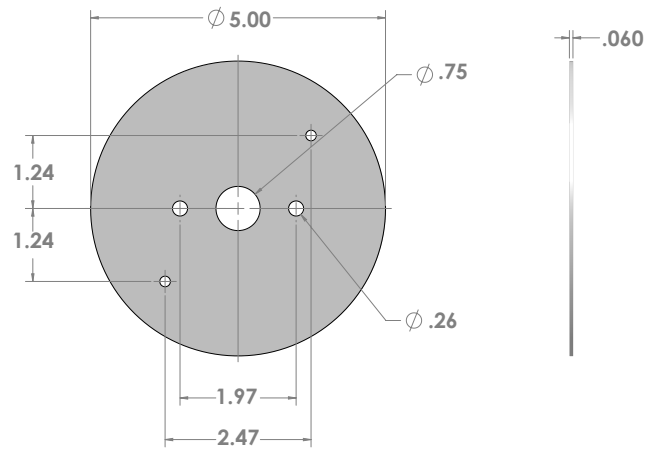


Accessory

Back Plate Cover

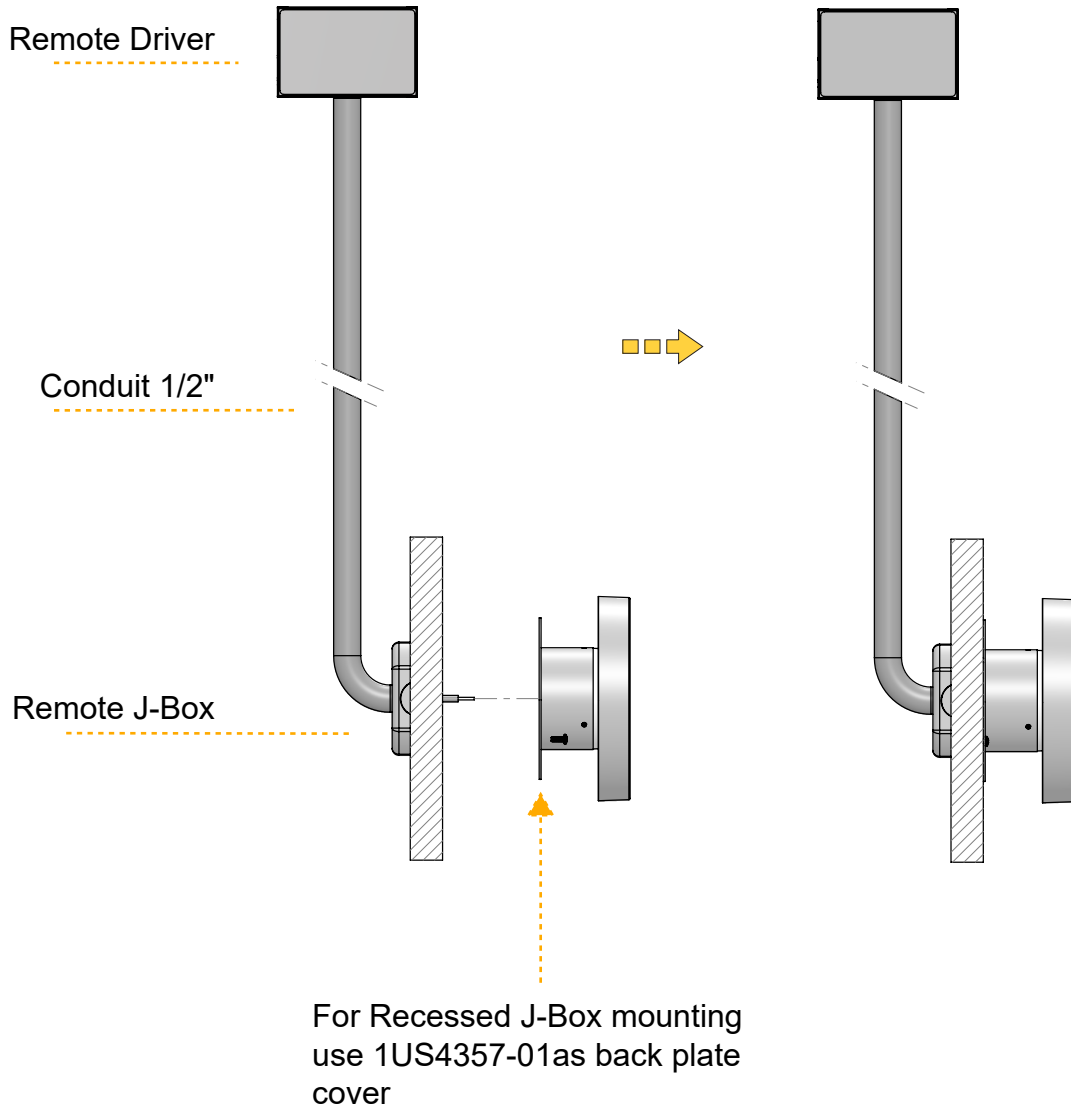


1US4357-01



Mounting Options

Remote Driver + Recessed + J-Box



REMOTE POWER SUPPLY OPTIONS

POWER SUPPLY (REQUIRED)

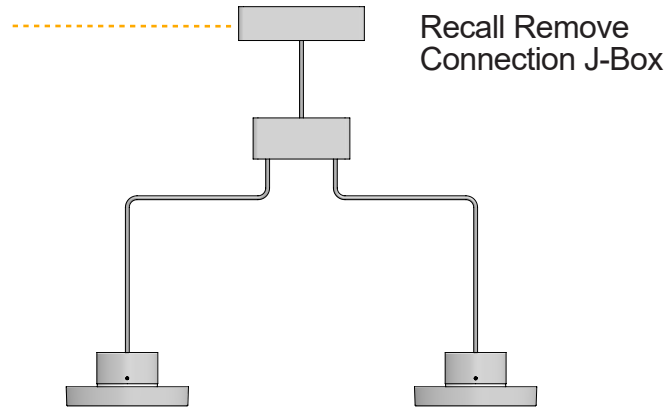
STANDALONE								
Part No.	Wattage	Control	Dim Range	Rating	In / Out Voltage	Certification	Dimensions (Standalone)	Description
DELV30124D	30W	0-10V	1%	IP65	120-277V / 24V	UR Class 2	7.5" X 2.4" X 1.4"	Magnitude SOLIDrive electronic standalone driver. UL listed enclosure provided by others.
DELV60124D	60W	0-10V	1%	IP65	120-277V / 24V	UR Class 2	7.5" X 2.4" X 1.4"	Magnitude SOLIDrive electronic standalone driver. UL listed enclosure provided by others.
DELV96124D	96W	0-10V	1%	IP65	120-277V / 24V	UR Class 2	7.5" X 2.4" X 1.4"	Magnitude SOLIDrive electronic standalone driver. UL listed enclosure provided by others.

MAX FIXTURES PER DRIVER					
Fixture Wattage	Driver Wattage				
	30W	60W	96W	2X96W	3X96W
	10W	2	4	7	7+7

EXAMPLE MAX FIXTURES PER DRIVER

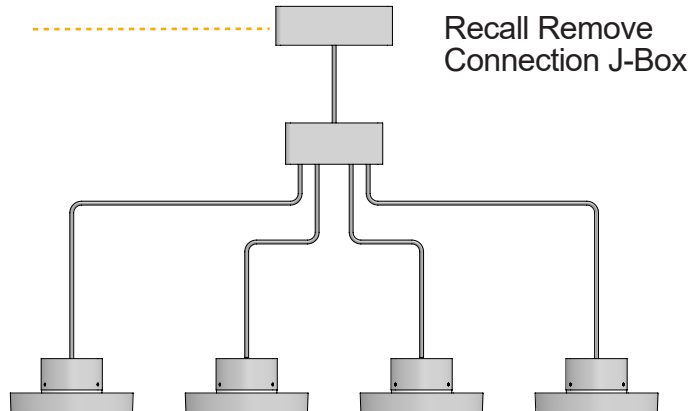
Fixture 10W 2ea fixture maximum

DELV30124D 30W
Driver 1ea required



Fixture 10W 4ea fixture maximum

DELV60124D 60W
Driver 1ea required

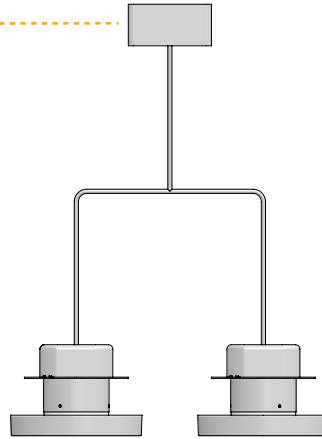


REMOTE POWER SUPPLY OPTIONS

EXAMPLE MAX FIXTURES PER DRIVER

Fixture 10W 2ea fixture maximum

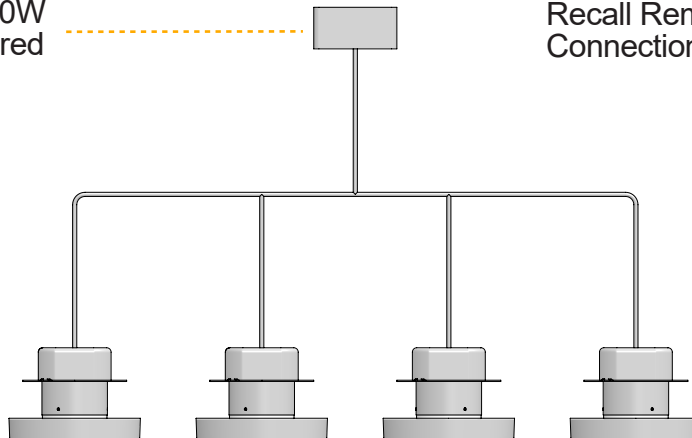
DELV30124D 30W
Driver 1ea required



Recall Remove
Connection J-Box

Fixture 10W 4ea fixture maximum

DELV60124D 60W
Driver 1ea required



Recall Remove
Connection J-Box

Maintenance

This fixture was designed and manufactured for a durable, long lasting use with minimum care. To ensure the maximum lifespan of this product, we encourage our customers to provide a quality visual inspection of the fixture and installation accessories every six months. If there are any visible signs of issues (i.e moisture or dust) during the inspection, please clean any of the dust or moisture with a soft cloth and check to make sure that any of the fixtures are still operating normally. If there are any issues regarding the fixture, please contact us as we will assist the situation at hand.

Support

Any questions, problems, or comments you have please feel free to contact our Customer Service department during our business hours Monday-Friday 8am-5pm via: Email: usaorders@targetti.com
Phone: (714) 513-1991

Visit our website: <http://www.targettiusa.com>