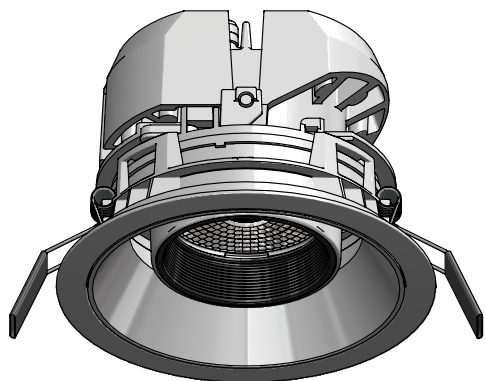




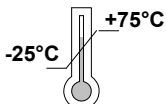
EVO ARCHITECTURAL 105 CEA105-

ADJUSTABLE 4" LED DOWNLIGHT



120/277V
50/60Hz

IP20



If in doubt about the symbols please
refer to catalog or website

WARNING

To ensure a maximum efficient use of the product, read the instructions before proceeding installment.



This fixture must be installed by a licensed and qualified electrician. The installer must comply with NEC and local building codes when installing the fixture



Electrical current can cause painful shock, serious injury, or even death. Make sure you turn off the power supply, ground fixture(s), and make sure all electrical connections are correct and secured tightly



IP20

For use in IP20 installations.



Keep the label of the original packaging if any eventual future claims are needed

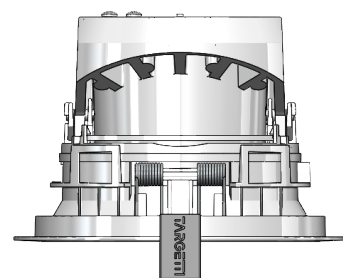
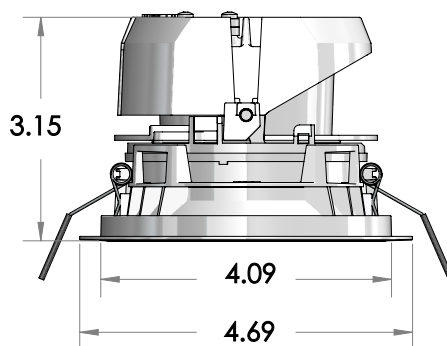
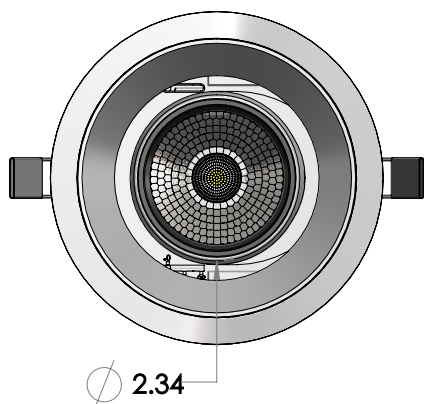
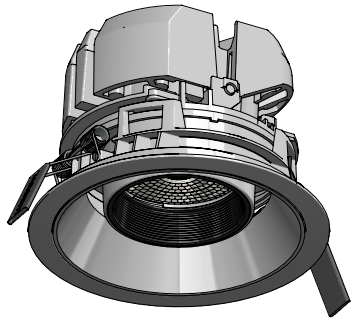


Table of Contents

Packaging Contents / Dimensions
Surface Installation
Installation Accessories
Diagram
Maintenance / Support

Pg.2
Pg.3/5
Pg.6/10
Pg.11
Pg.12

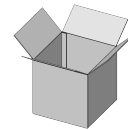
Packaging Contents / Dimensions



CEA105 - Fixture 1ea.

Finish

-  Plaster White
-  Deep Black

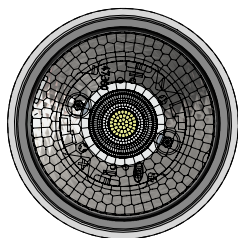


Box 5"x 6"x 6" @1.14lbs

SPECIFICATION INFORMATION

1 - PRODUCT CODE	2 - TYPE	3 - OPTICS	4 - WATTAGE	5 - KELVIN	6 - FIXTURE FINISH
CEA — EVO Architectural	105 — 4" Dia.	NS — NSP 10°	L1 — 6W	27 — 2700K	PW — Plaster White
		SP — SP 14°	L2 — 12W	30 — 3000K	DB — Deep Black
		FL — FL 26°	L3 — 18W	35 — 3500K	
		MF — MWFL 41°		40 — 4000K	
7 - INSTALLATION	8 - OPTICAL ACCESSORIES				
Non-IC Housing See section for details	Linear Spread Lens See section for details				
IC Housing See section for details	Honeycomb Louver See section for details				
	Peach Tone Filter See section for details				

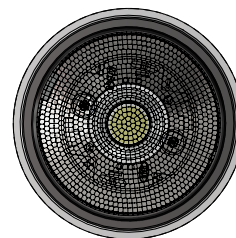
OPTICAL



SP



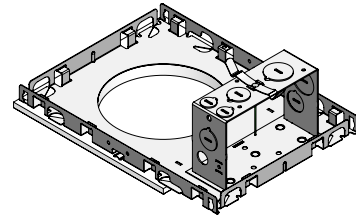
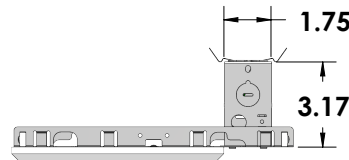
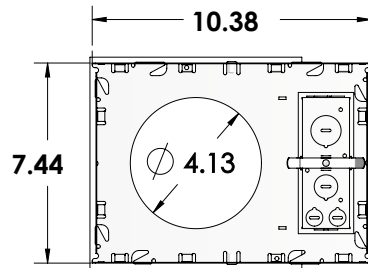
FL



MF

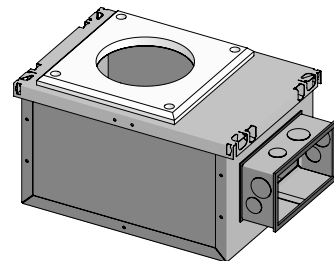
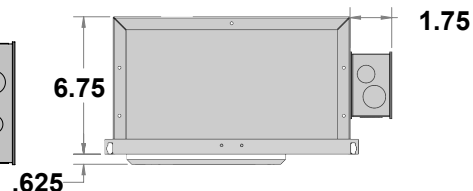
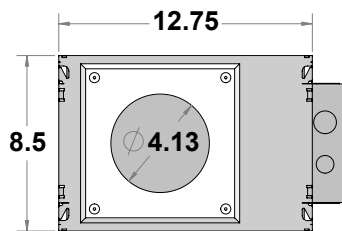
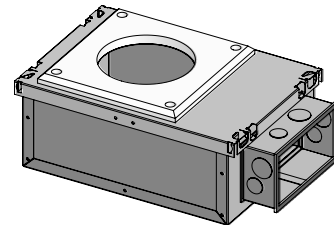
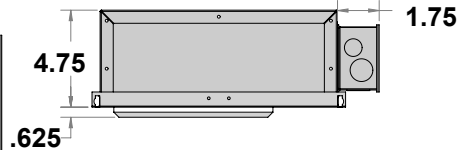
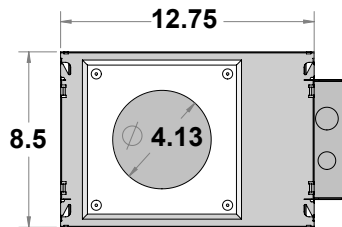
Installation Accessories

INSTALLATION (REQUIRED)



Non-IC plaster frame with pre-installed 5/8" fiber board with cut out for ease of installation in drywall.

Wattage	L1(6W)	L2 (12W)	L3 (18W)
Voltage	120V	120V	120V
Part No.	CCA105NCL112010	CCA105NCL212041	CCA105NCL312041
Voltage	277V	277V	277V
Part No.	CCA105NCL127710	CCA105NCL227710	CCA105NCL327710



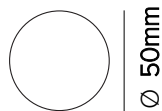
IC/Air tight housing with pre-installed 5/8" fiber board with cut out for ease of installation in drywall. Suitable for Chicago Plenum rated installation.

Wattage	L1(6W)	L2 (12W)	L3 (18W)
Voltage	120V	120V	120V
Part No.	CCA105ICL112010	CCA105ICL212041	CCA105ICL312041
Voltage	277V	277V	277V
Part No.	CCA105ICL127710	CCA105ICL227710	CCA105ICL327710

Installation Accessories

OPTICAL ACCESSORIES (OPTIONAL)

1T4721



'Blade of Light' linear spread lens. PMMA holographic filter.
MAXIMUM OF TWO ACCESSORY PER FIXTURE.

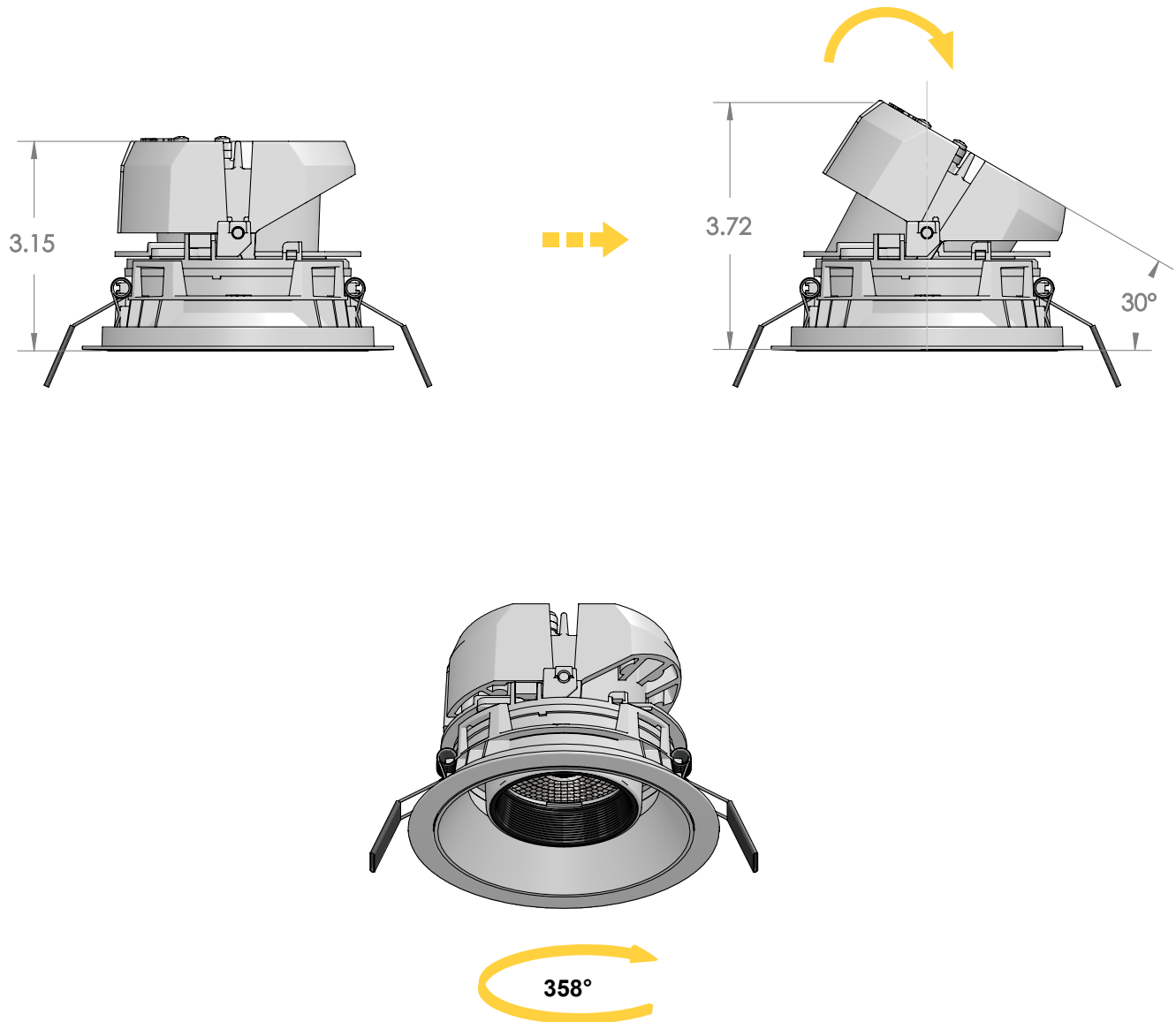
1T4322



Anti-glare louver. Lacquered metal honeycomb structure.
MAXIMUM OF TWO ACCESSORY PER FIXTURE.

Installation Instructions

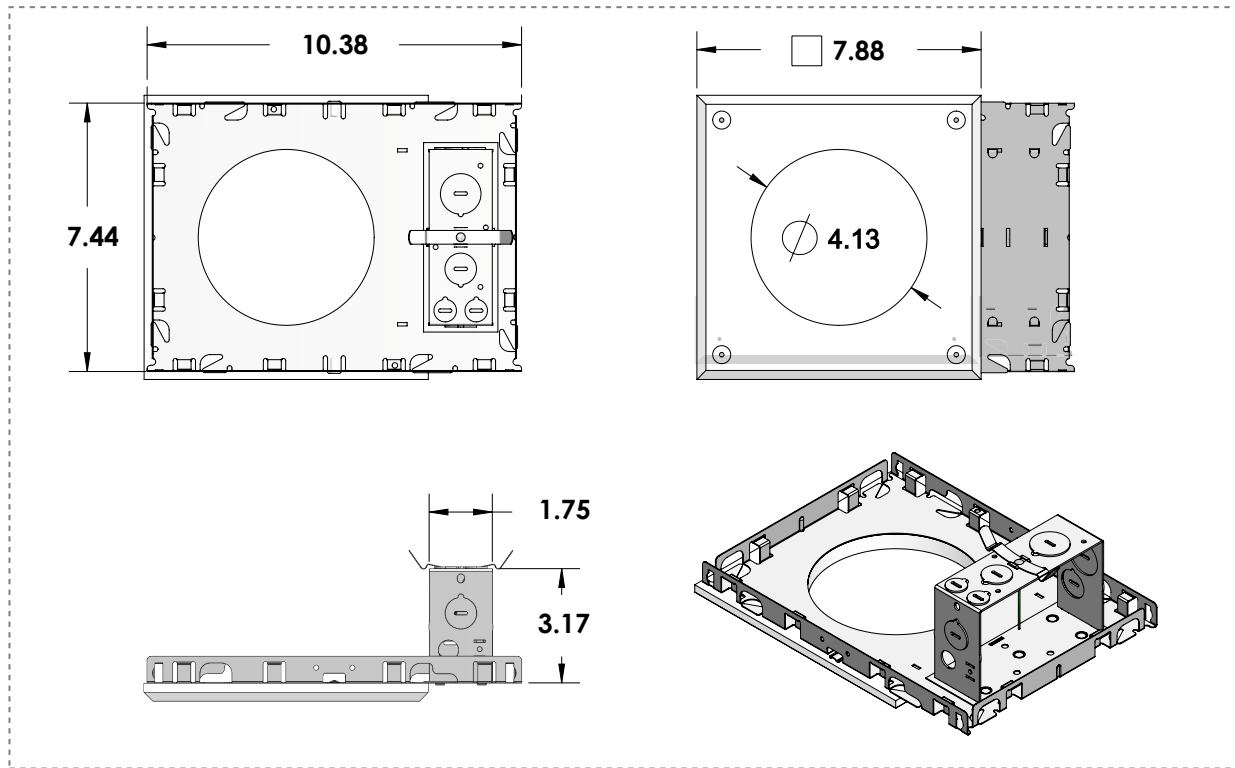
Key Features



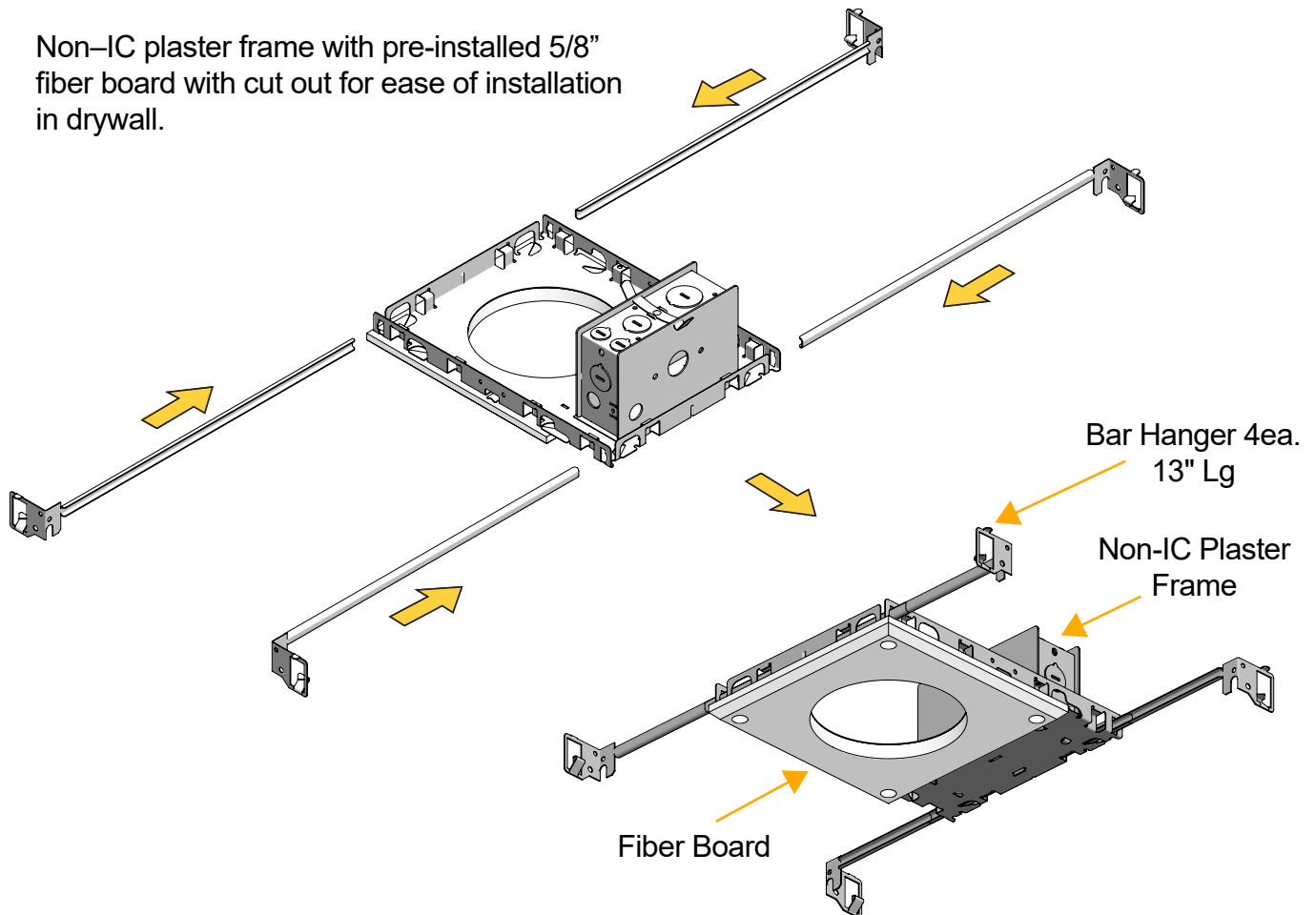
Friction rotation system with adjustability of the fixture from 0°/ 30° on a vertical plane and can be manually aimed to 358° on a horizontal plane.

Installation Instructions

Non-IC plaster frame with pre-installed 5/8"

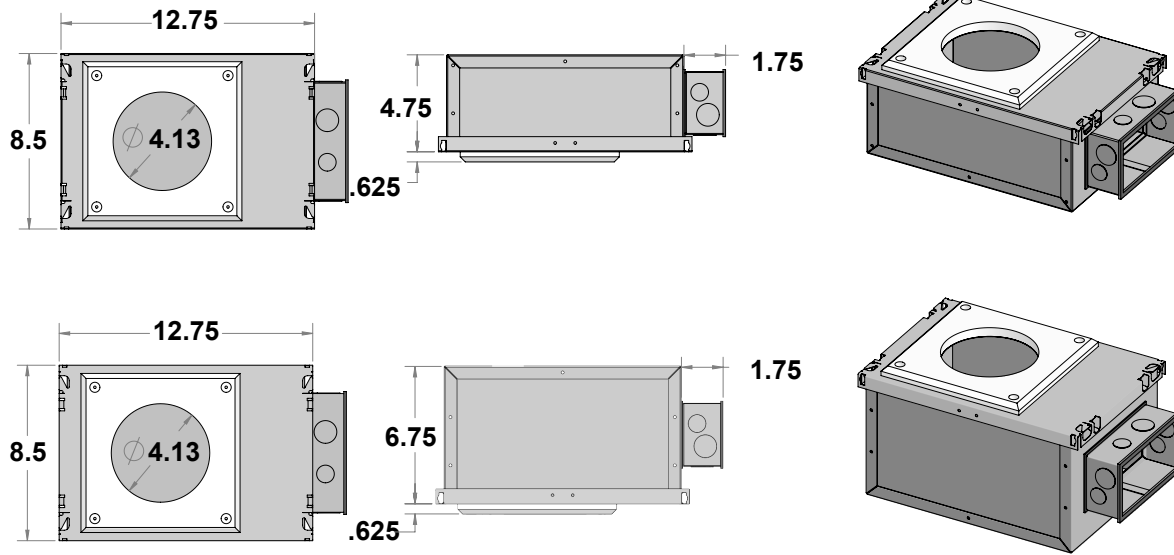


Non-IC plaster frame with pre-installed 5/8" fiber board with cut out for ease of installation in drywall.

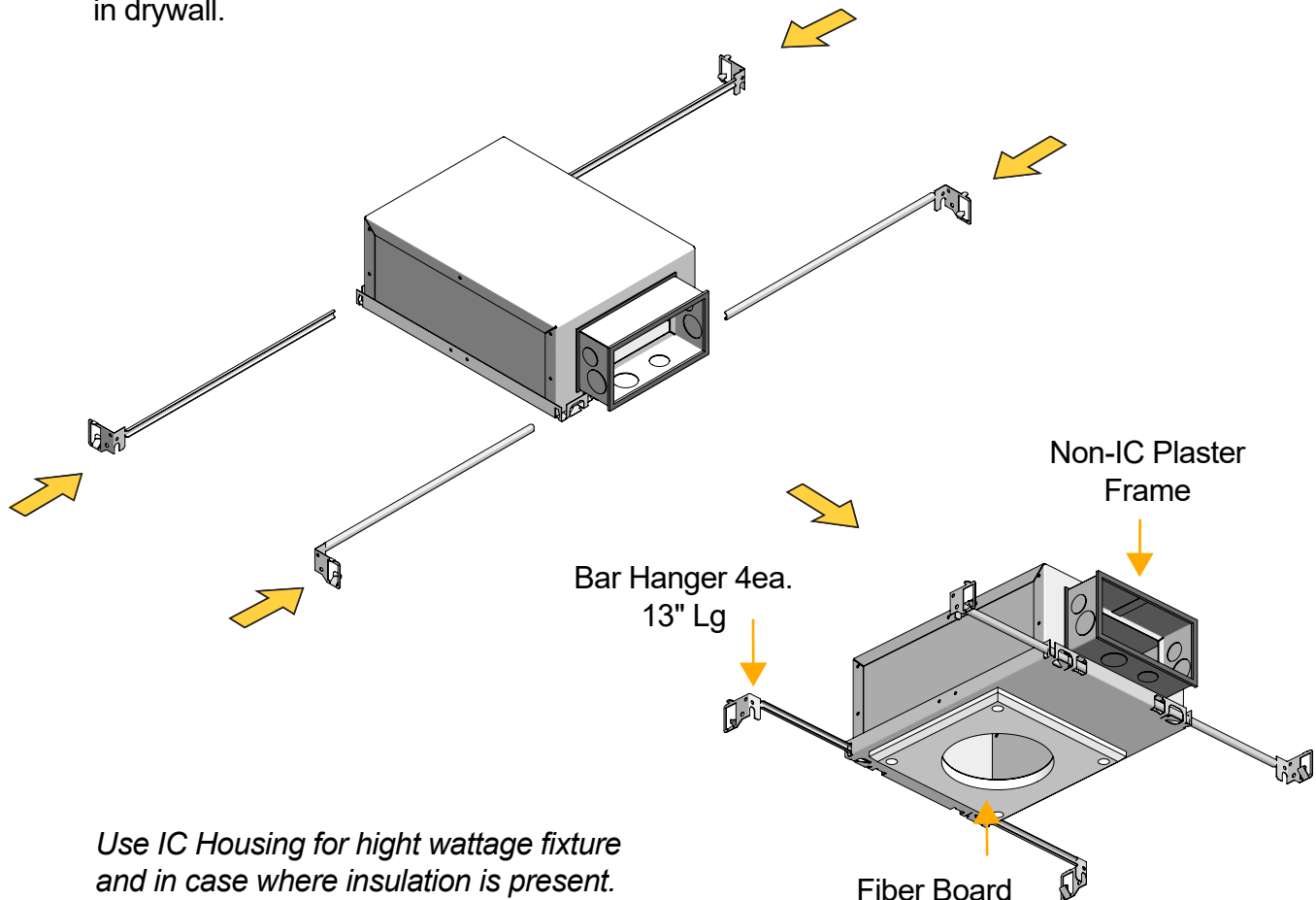


Installation Instructions

IC/Air tight housing with pre-installed 5/8"



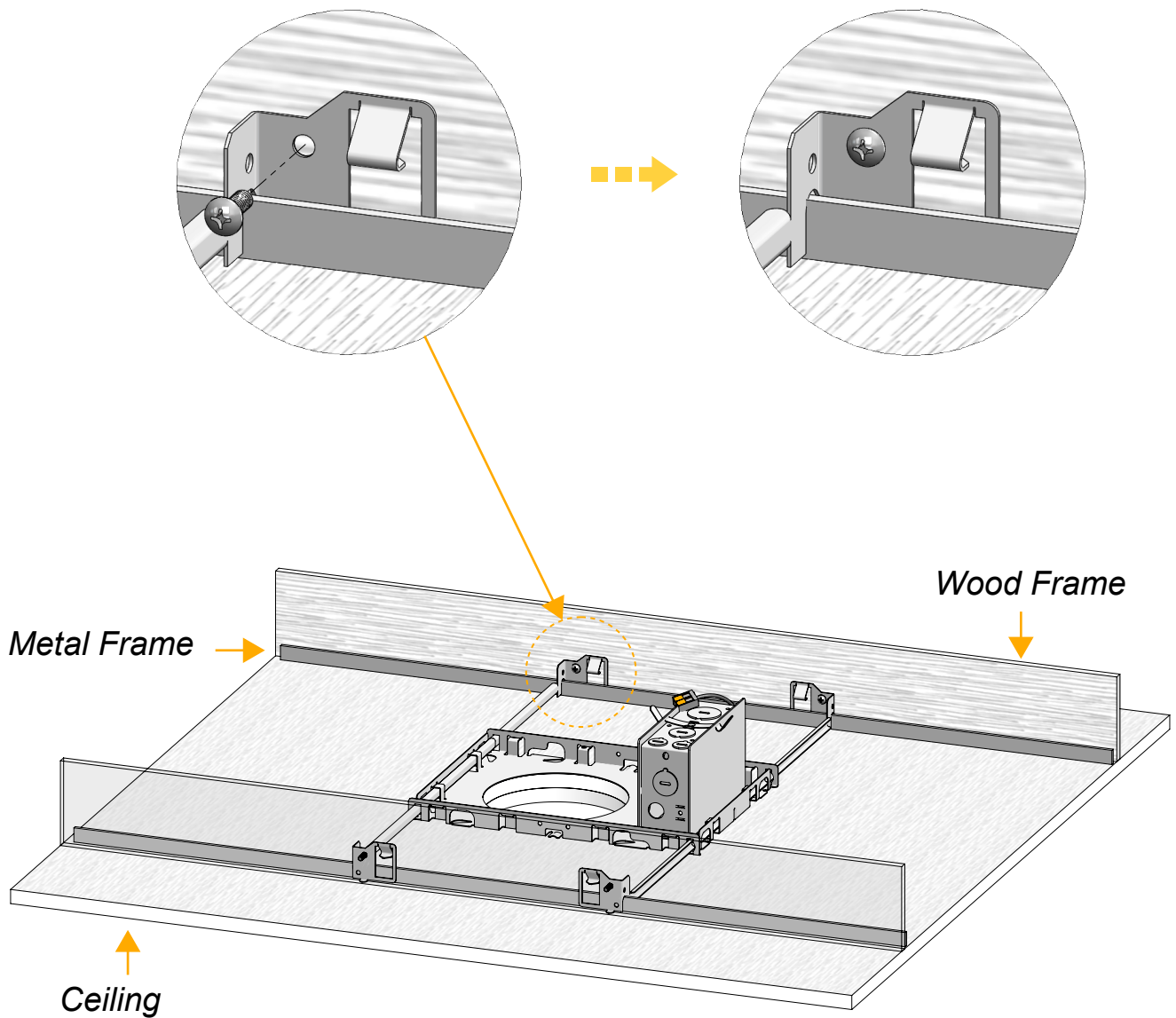
IC Air tight housing with pre-installed 5/8"
fiber board with cut out for ease of installation
in drywall.



*Use IC Housing for high wattage fixture
and in case where insulation is present.*

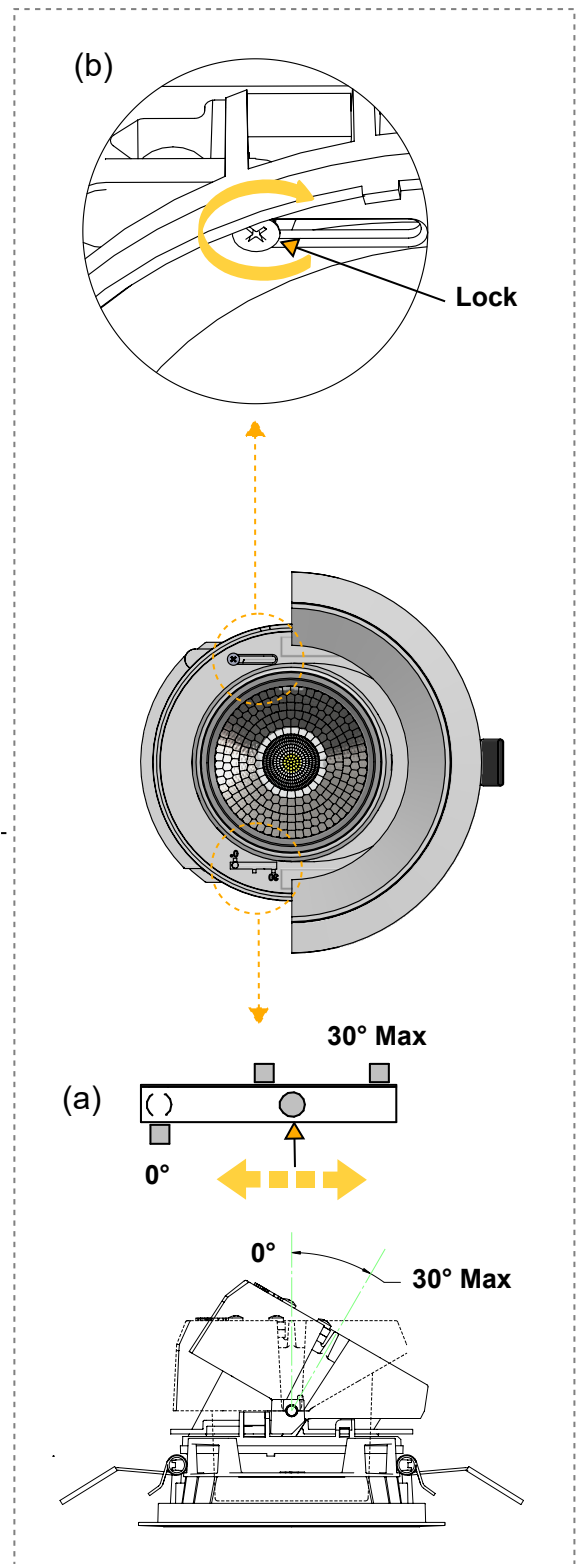
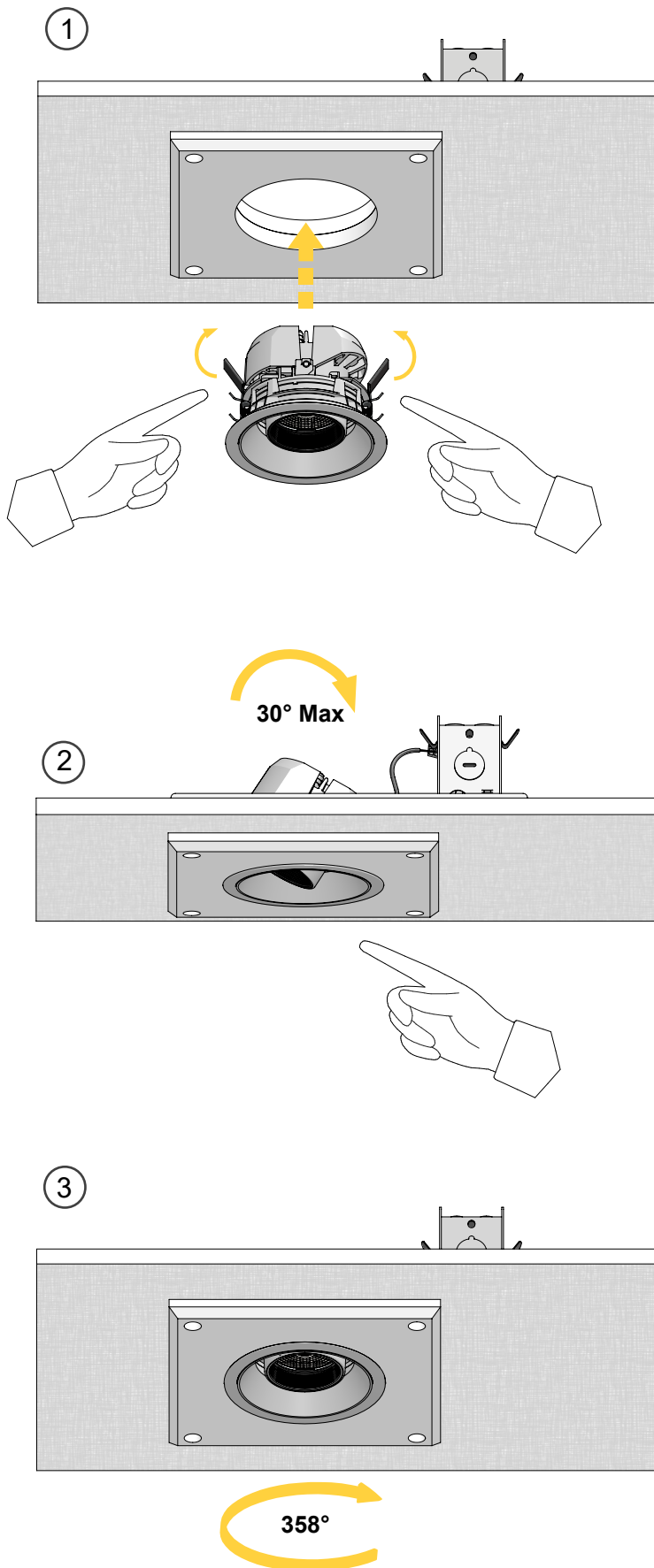
Installation Instructions

Install Non-IC plaster frame with pre-installed 5/8" in drop ceiling



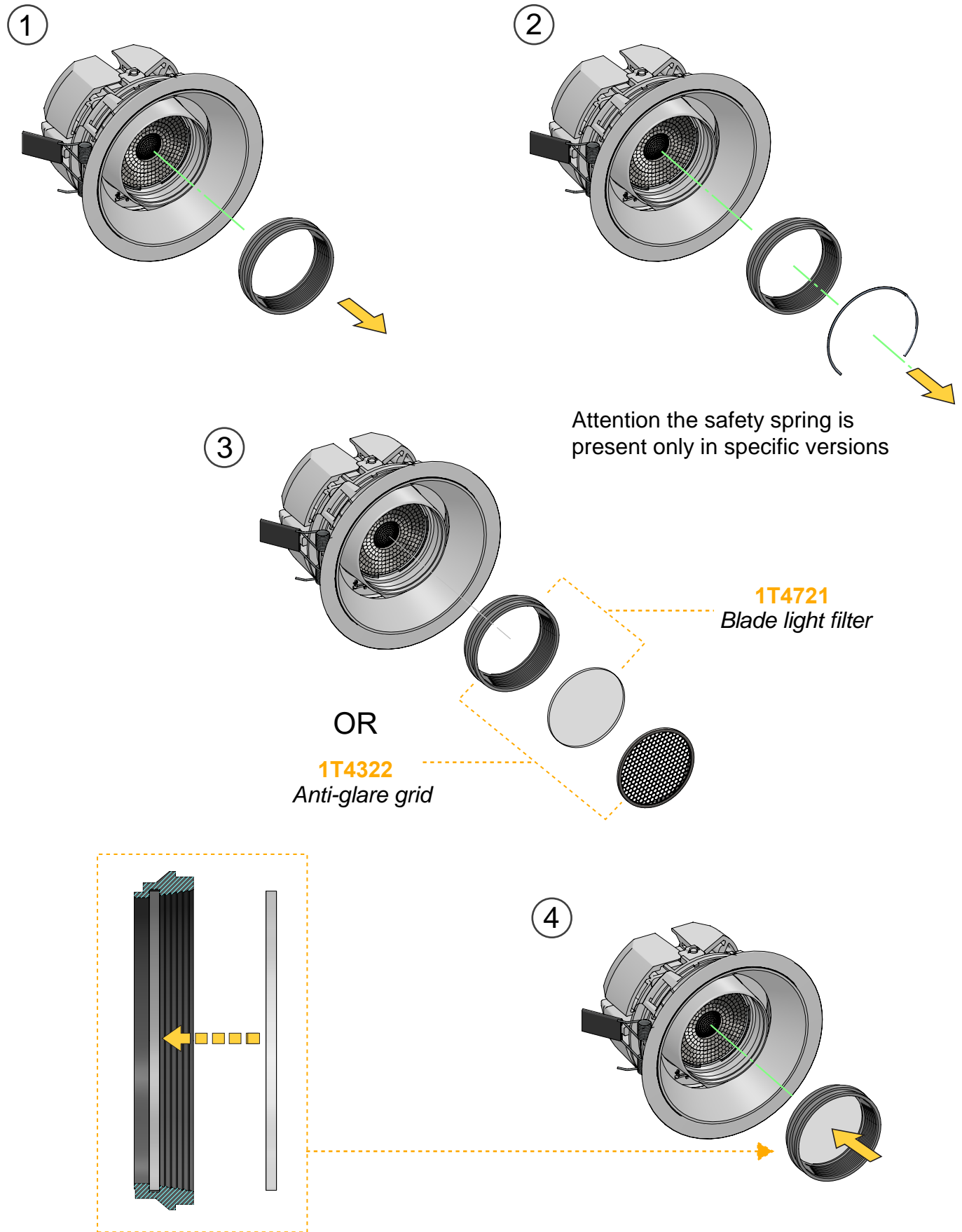
Installation Instructions

Non-IC plaster frame with pre-installed 5/8"

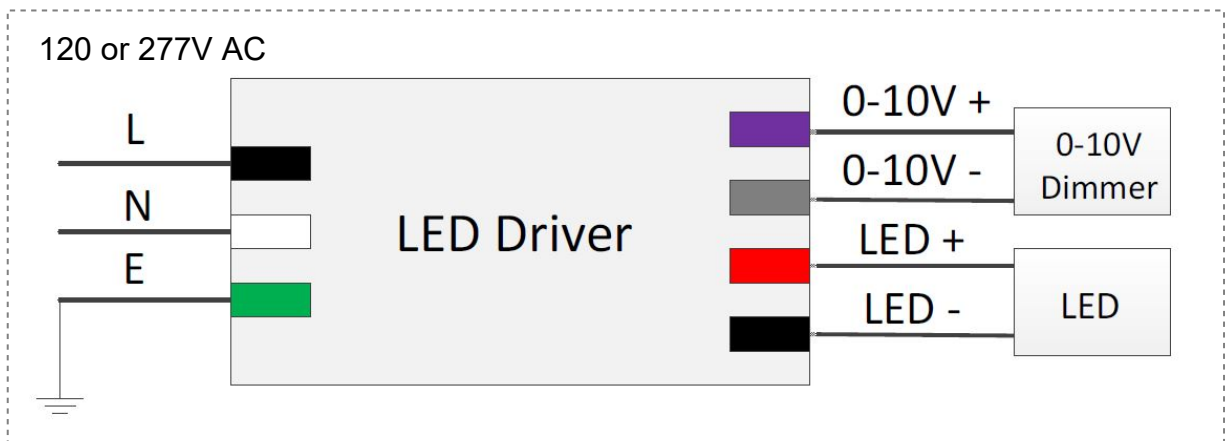
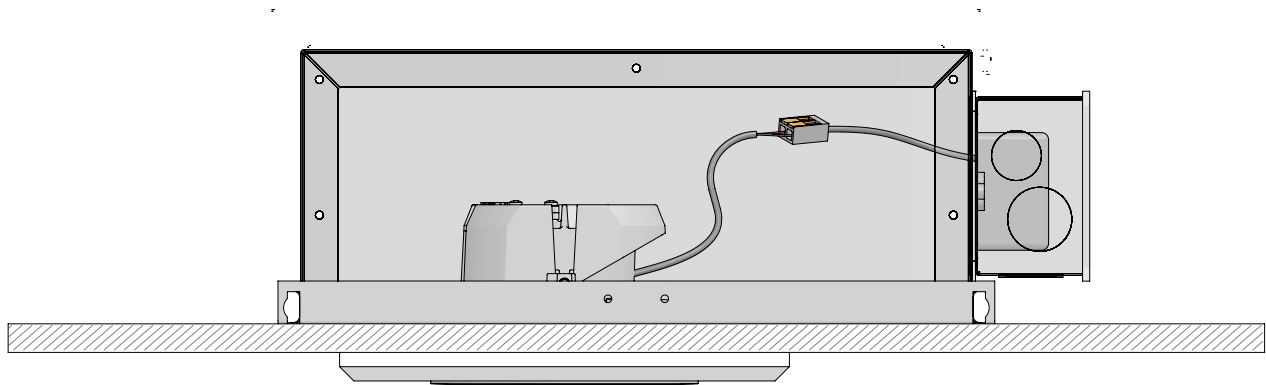
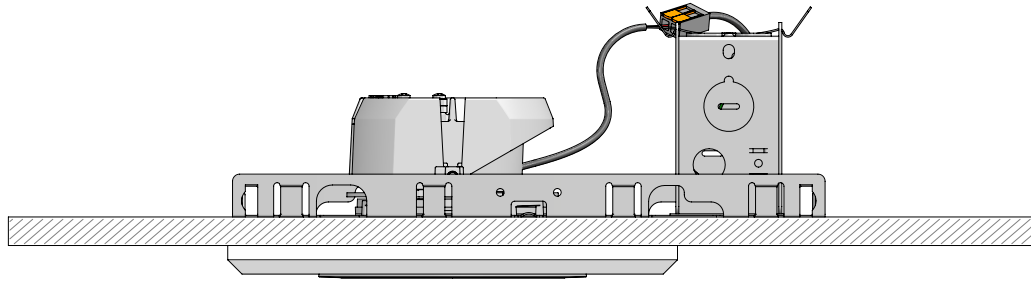


Accessory Assembly

Blade light filter & Anti-glare grid



Diagram



Maintenance

This fixture was designed and manufactured for a durable, long lasting use with minimum care. To ensure the maximum lifespan of this product, we encourage our customers to provide a quality visual inspection of the fixture and installation accessories every six months. If there are any visible signs of issues (i.e moisture or dust) during the inspection, please clean any of the dust or moisture with a soft cloth and check to make sure that any of the fixtures are still operating normally. If there are any issues regarding the fixture please contact us as we will assist the situation at hand.

Support

Any questions, problems, or comments you have please feel free to contact our Customer Service department during our business hours Monday-Friday 8am-5pm via: Email: usaorders@targetti.com
Phone: (714) 513-1991

Visit our website: <http://www.targettiusa.com>