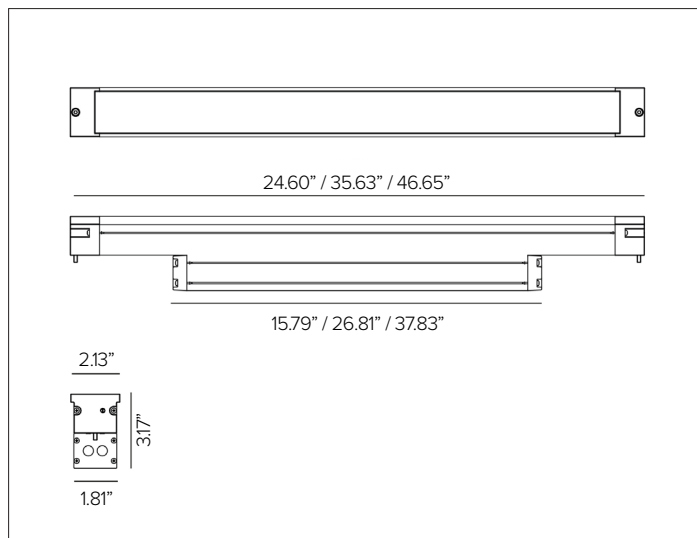


JEDI COMPACT RECESSED

Powerful Compact Recessed Linear Ingrade



CONCEPT

Powerful compact recessed linear LED ingrade with integral driver.

MECHANICAL CHARACTERISTICS

Housing	2.13"W X 3.17"D
Materials	Extruded 15μ anodized aluminum body and border trim with extra clear 5mm flat glass, optional anti-slip silk screen glass available upon request. Integral driver housed in extruded aluminum box on underside of fixture.
Finish	● Natural
Power Connection	Pre-wired from driver enclosure with 2ea 20inL cables: Belden 18-2 direct burial 0-10V for dimming and SJOOW 18-3 for power. Lead and Solo configurations provided with 2ea 10ftL lead dimming and power cables. IP68 field attached disconnects included. See In-line Connection Configuration for detailed diagrams.
Mounting	Installation sleeve required for inground flush mounting, see available options. Fixture incorporated with holes for securing installation sleeve and stainless steel screws.
Weight	5.8lbs (24.60"L) / 8lbs (36.63"L) / 10lbs (46.65"L)
Protection	IP68 ^B / IP69K
Impact	IK08
Load Rating	Resistant to static loads up to 4,000lbs.

CERTIFICATIONS

cULus Wet Location Listed.
 Tested in accordance with LM-79-08.
 Compliant for California installations.
 IEC 62471
 RoHS3 EU 215/863

WARRANTY

5 year limited warranty
^A Fixture body complete with marine grade cataphoresis suitable for use in marine grade environments. Not to be in direct contact with salt or corrosive agents for extended periods of time.
^B Temporary immersion up to 24 hours at a max depth of 2 meters. Installation of fixture requires proper drainage to prevent any standing water. Should not be used for permanent submersion.

SUSTAINABILITY

Luminaire designed for disposal/recycling at end-of-life. Replaceable LED light source and control gear by a Targetti technician.

ELECTRICAL CHARACTERISTICS

Power Supply	Integral electronic 0–10V dimmable driver to 1% dim range.
Wattage	28W (24.60"L) / 40W (36.63"L) / 53W (46.65"L). Consult factory for derated options.
Voltage	Universal Voltage 120-277V AC 50/60Hz
Safe Flicker	PstLM<1 and SVM<1 (IEC TR 61547-1 and IEC TR 63158)

SOURCE

SP: High efficiency LED emitter. WW / WG / FL / DV: Linear high efficiency LED board.

TM30	CCT (Nominal)	CRI	Rf	Rg	SDCM
	2700K	80	83	97.3	3
	3000K	80	82.9	97	3
	3500K	80	83.6	96.5	3
	4000K	80	82.6	95.7	3

Ra90 available upon request

OPTIC

Optical system is dependent on beam angle. WW / WG / FL is comprised of a primary cylindrical methacrylate lens and a high reflectance anodized aluminum reflector with an integrated holographic filter. SP is comprised of individual lenses for more precise beam and higher intensity. DV is comprised of white silk-screen tempered glass.

Beam	WW 59°x115°	WG 15°x76°	FL 32°x85°	SP 11°x11°
Delivered Lumens	2700K 2428Lm	2684Lm	2413Lm	2371Lm
	3000K 2586Lm	2858Lm	2570Lm	2501Lm
	3500K 2646Lm	2924Lm	2630Lm	2655Lm
	4000K 2706Lm	2991Lm	2690Lm	2744Lm
Efficacy	113Lm/W max. Refer to photometric graphs for specific values.			
Lifetime	WW / WG / FL: L95/B10 30,000hrs at max TA +25°C, L91/B10 50,000hrs at max TA +25°C SP: L96/B10 30,000hrs at max TA +25°C, L95/B10 50,000hrs at max TA +25°C			
Photobiological Classification	Low risk safety RG1			

JEDI COMPACT RECESSED

SPECIFICATION INFORMATION

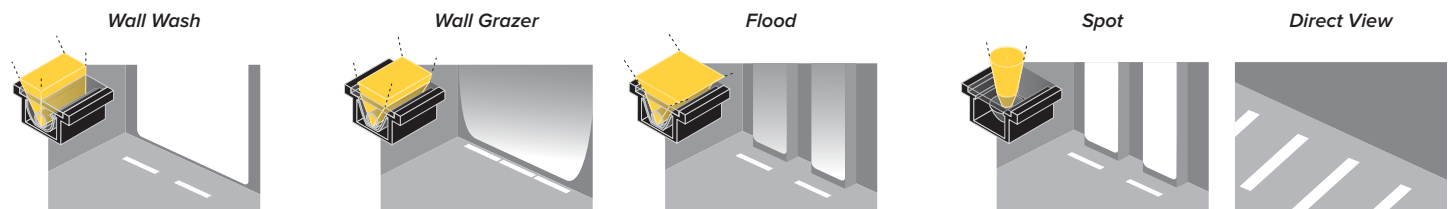
JCO		R							
1	2	3	4	5	6	7	8	9	
Ex: JCOR41WW2430S / 1E3733									
							OPTIONAL	REQUIRED	
1 - PRODUCT CODE	2 - TYPE	3 - DRIVER	4 - OPTIC	5 - LENGTH	6 - KELVIN	7 - CABLE	8 - OPTICAL ACCESSORIES		
JCO — JEDI COMPACT	R — Recessed	10 — 0-10V	WW — WW 59°x115° WG — WG 15°x76° FL — FL 32°x85° SP ^c — SP 11° DV ^c — Direct View	24 — 24.60" 35 — 35.63" 46 — 46.65"	27 — 2700K 30 — 3000K 35 — 3500K 40 — 4000K	L — Lead C — Center E — End S — Solo	LV ^c — Integral Anti-Glare Louver		

9 - INSTALLATION

[Installation Sleeve](#)
See section for details

^c LV option not available with SP or DV optics.

OPTIC VERSIONS



Integral Louver (WW optic)

Optional integral anti-glare louver, factory installed inside fixture.



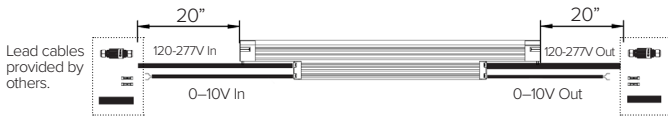
Integral Louver (WG & FL optics)

Optional integral anti-glare louver, factory installed inside fixture.

No Louver Option (SP & DV optics)

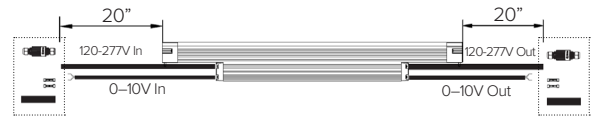
JEDI COMPACT RECESSED

7 – CABLE



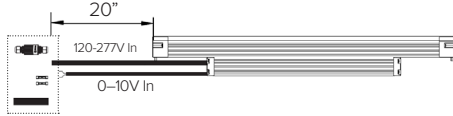
Lead – 2ea 20in direct burial cables: Belden 18/2 0-10V dimming and SJOOW 18/3 power. Supplied with 2ea IP68 connector kits.

Part No. **L**



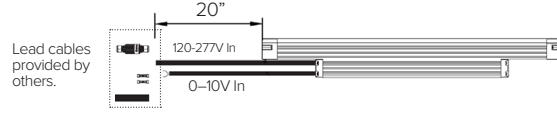
Center – 2ea 20in direct burial cables: Belden 18/2 0-10V dimming and SJOOW 18/3 power. Supplied with 2ea IP68 connector kits.

Part No. **C**



End – 1ea 20in direct burial cables: Belden 18/2 0-10V dimming and SJOOW 18/3 power. Supplied with 1ea IP68 connector kit.

Part No. **E**

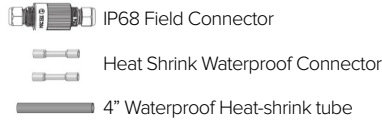


Solo – 1ea 20in direct burial cables: Belden 18/2 0-10V dimming and SJOOW 18/3 power. Supplied with 1ea IP68 connector kit.

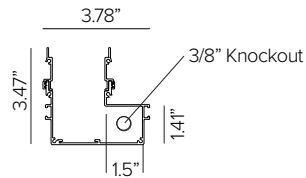
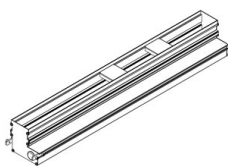
Part No. **S**

IP68 connector kit.

2ea Lead / Center Fixture
1ea Solo / End fixture



9 – INSTALLATION (REQUIRED)



JEDI COMPACT extruded aluminum low profile installation sleeve for feed through wiring.

Length	24.69"	35.71"	46.73"
Part No.	1E3733	1E3734	1E3735

JEDI COMPACT RECESSED

PHOTOMETRY

24.60" WALL WASHER



2700K		H(m)	D1(m)	D2(m)	Emax(lx)		
Ra84			115°	59°			
Fixture Power	28W	1	3.12	1.34	2171		
Source Flux	3230lm	2	6.23	2.67	543		
Fixture Flux	2428lm	3	9.35	4.01	241		
Efficacy	87lm/W	4	12.47	5.35	136		
TS1092	I _{max} =774cd/klm	I _{max}	2499cd	5	15.59	6.69	87



3000K		H(m)	D1(m)	D2(m)	Emax(lx)		
Ra84			115°	59°			
Fixture Power	28W	1	3.12	1.34	2312		
Source Flux	3440lm	2	6.23	2.67	578		
Fixture Flux	2586lm	3	9.35	4.01	257		
Efficacy	92lm/W	4	12.47	5.35	145		
TS1092	I _{max} =774cd/klm	I _{max}	2661cd	5	15.59	6.69	92



3500K		H(m)	D1(m)	D2(m)	Emax(lx)		
Ra84			115°	59°			
Fixture Power	28W	1	3.12	1.34	2366		
Source Flux	3520lm	2	6.23	2.67	591		
Fixture Flux	2646lm	3	9.35	4.01	263		
Efficacy	95lm/W	4	12.47	5.35	148		
TS1092	I _{max} =774cd/klm	I _{max}	2723cd	5	15.59	6.69	95



4000K		H(m)	D1(m)	D2(m)	Emax(lx)		
Ra84			115°	59°			
Fixture Power	28W	1	3.12	1.34	2420		
Source Flux	3600lm	2	6.23	2.67	605		
Fixture Flux	2706lm	3	9.35	4.01	269		
Efficacy	97lm/W	4	12.47	5.35	151		
TS1092	I _{max} =774cd/klm	I _{max}	2785cd	5	15.59	6.69	97

35.63" WALL WASHER



2700K		H(m)	D1(m)	D2(m)	Emax(lx)		
Ra84			115°	59°			
Fixture Power	40W	1	3.12	1.34	3257		
Source Flux	4845lm	2	6.23	2.67	814		
Fixture Flux	3643lm	3	9.35	4.01	362		
Efficacy	91lm/W	4	12.47	5.35	204		
TS1093	I _{max} =774cd/klm	I _{max}	3749cd	5	15.59	6.69	130



3000K		H(m)	D1(m)	D2(m)	Emax(lx)		
Ra84			115°	59°			
Fixture Power	40W	1	3.12	1.34	3469		
Source Flux	5160lm	2	6.23	2.67	867		
Fixture Flux	3880lm	3	9.35	4.01	385		
Efficacy	97lm/W	4	12.47	5.35	217		
TS1093	I _{max} =774cd/klm	I _{max}	3992cd	5	15.59	6.69	139



3500K		H(m)	D1(m)	D2(m)	Emax(lx)		
Ra84			115°	59°			
Fixture Power	40W	1	3.12	1.34	3550		
Source Flux	5280lm	2	6.23	2.67	887		
Fixture Flux	3970lm	3	9.35	4.01	394		
Efficacy	99lm/W	4	12.47	5.35	222		
TS1093	I _{max} =774cd/klm	I _{max}	4085cd	5	15.59	6.69	142



4000K		H(m)	D1(m)	D2(m)	Emax(lx)		
Ra84			115°	59°			
Fixture Power	40W	1	3.12	1.34	3630		
Source Flux	5400lm	2	6.23	2.67	908		
Fixture Flux	4060lm	3	9.35	4.01	403		
Efficacy	102lm/W	4	12.47	5.35	227		
TS1093	I _{max} =774cd/klm	I _{max}	4178cd	5	15.59	6.69	145

46.65" WALL WASHER



2700K		H(m)	D1(m)	D2(m)	Emax(lx)		
Ra84			115°	59°			
Fixture Power	53W	1	3.12	1.34	4343		
Source Flux	6460lm	2	6.23	2.67	1086		
Fixture Flux	4858lm	3	9.35	4.01	483		
Efficacy	92lm/W	4	12.47	5.35	271		
TS1093	I _{max} =774cd/klm	I _{max}	4998cd	5	15.59	6.69	174



3000K		H(m)	D1(m)	D2(m)	Emax(lx)		
Ra84			115°	59°			
Fixture Power	53W	1	3.12	1.34	4625		
Source Flux	6880lm	2	6.23	2.67	1156		
Fixture Flux	5173lm	3	9.35	4.01	514		
Efficacy	98lm/W	4	12.47	5.35	289		
TS1093	I _{max} =774cd/klm	I _{max}	5323cd	5	15.59	6.69	185



3500K		H(m)	D1(m)	D2(m)	Emax(lx)		
Ra84			115°	59°			
Fixture Power	53W	1	3.12	1.34	4733		
Source Flux	7040lm	2	6.23	2.67	1183		
Fixture Flux	5294lm	3	9.35	4.01	526		
Efficacy	100lm/W	4	12.47	5.35	296		
TS1093	I _{max} =774cd/klm	I _{max}	5447cd	5	15.59	6.69	189



4000K		H(m)	D1(m)	D2(m)	Emax(lx)		
Ra84			115°	59°			
Fixture Power	53W	1	3.12	1.34	4840		
Source Flux	7200lm	2	6.23	2.67	1210		
Fixture Flux	5414lm	3	9.35	4.01	538		
Efficacy	102lm/W	4	12.47	5.35	303		
TS1093	I _{max} =774cd/klm	I _{max}	5571cd	5	15.59	6.69	194

JEDI COMPACT RECESSED

PHOTOMETRY

24.60" WALL GRAZER



2700K		H(m)	D1(m)	D2(m)	Emax(lx)		
Ra84		76°	15°				
Fixture Power	28W	1	1.55	0.26	5169		
Source Flux	3230lm	2	3.10	0.51	1292		
Fixture Flux	2684lm	3	4.65	0.77	574		
Efficacy	96lm/W	4	6.21	1.02	323		
TS1088	Imax=1600cd/klm	Imax	5169cd	5	7.76	1.28	207



3000K		H(m)	D1(m)	D2(m)	Emax(lx)		
Ra84		76°	15°				
Fixture Power	28W	1	1.55	0.26	5505		
Source Flux	3440lm	2	3.10	0.51	1376		
Fixture Flux	2858lm	3	4.65	0.77	612		
Efficacy	102lm/W	4	6.21	1.02	344		
TS1088	Imax=1600cd/klm	Imax	5505cd	5	7.76	1.28	220



3500K		H(m)	D1(m)	D2(m)	Emax(lx)		
Ra84		76°	15°				
Fixture Power	28W	1	1.55	0.26	5633		
Source Flux	3520lm	2	3.10	0.51	1408		
Fixture Flux	2924lm	3	4.65	0.77	626		
Efficacy	104lm/W	4	6.21	1.02	352		
TS1088	Imax=1600cd/klm	Imax	5633cd	5	7.76	1.28	225



4000K		H(m)	D1(m)	D2(m)	Emax(lx)		
Ra84		76°	15°				
Fixture Power	28W	1	1.55	0.26	5761		
Source Flux	3600lm	2	3.10	0.51	1440		
Fixture Flux	2991lm	3	4.65	0.77	640		
Efficacy	107lm/W	4	6.21	1.02	360		
TS1088	Imax=1600cd/klm	Imax	5761cd	5	7.76	1.28	230

35.63" WALL GRAZER



2700K		H(m)	D1(m)	D2(m)	Emax(lx)		
Ra84		76°	15°				
Fixture Power	40W	1	1.55	0.26	7755		
Source Flux	4845lm	2	3.10	0.51	1939		
Fixture Flux	4026lm	3	4.65	0.77	862		
Efficacy	101lm/W	4	6.21	1.02	485		
TS1089	Imax=1601cd/klm	Imax	7755cd	5	7.76	1.28	310



3000K		H(m)	D1(m)	D2(m)	Emax(lx)		
Ra84		76°	15°				
Fixture Power	40W	1	1.55	0.26	8259		
Source Flux	5160lm	2	3.10	0.51	2065		
Fixture Flux	4288lm	3	4.65	0.77	918		
Efficacy	107lm/W	4	6.21	1.02	516		
TS1089	Imax=1601cd/klm	Imax	8259cd	5	7.76	1.28	330



3500K		H(m)	D1(m)	D2(m)	Emax(lx)		
Ra84		76°	15°				
Fixture Power	40W	1	1.55	0.26	8451		
Source Flux	5280lm	2	3.10	0.51	2113		
Fixture Flux	4388lm	3	4.65	0.77	939		
Efficacy	110lm/W	4	6.21	1.02	528		
TS1089	Imax=1601cd/klm	Imax	8451cd	5	7.76	1.28	338



4000K		H(m)	D1(m)	D2(m)	Emax(lx)		
Ra84		76°	15°				
Fixture Power	40W	1	1.55	0.26	8643		
Source Flux	5400lm	2	3.10	0.51	2161		
Fixture Flux	4487lm	3	4.65	0.77	960		
Efficacy	112lm/W	4	6.21	1.02	540		
TS1089	Imax=1601cd/klm	Imax	8643cd	5	7.76	1.28	346

46" WALL GRAZER



2700K		H(m)	D1(m)	D2(m)	Emax(lx)		
Ra84		76°	15°				
Fixture Power	53W	1	1.55	0.26	10340		
Source Flux	6460lm	2	3.10	0.51	2585		
Fixture Flux	5368lm	3	4.65	0.77	1149		
Efficacy	101lm/W	4	6.21	1.02	646		
TS1089	Imax=1601cd/klm	Imax	10340cd	5	7.76	1.28	414



3000K		H(m)	D1(m)	D2(m)	Emax(lx)		
Ra84		76°	15°				
Fixture Power	53W	1	1.55	0.26	11012		
Source Flux	6880lm	2	3.10	0.51	2753		
Fixture Flux	5717lm	3	4.65	0.77	1224		
Efficacy	108lm/W	4	6.21	1.02	688		
TS1089	Imax=1601cd/klm	Imax	11012cd	5	7.76	1.28	440



3500K		H(m)	D1(m)	D2(m)	Emax(lx)		
Ra84		76°	15°				
Fixture Power	53W	1	1.55	0.26	11268		
Source Flux	7040lm	2	3.10	0.51	2817		
Fixture Flux	5850lm	3	4.65	0.77	1252		
Efficacy	110lm/W	4	6.21	1.02	704		
TS1089	Imax=1601cd/klm	Imax	11268cd	5	7.76	1.28	451



4000K		H(m)	D1(m)	D2(m)	Emax(lx)		
Ra84		76°	15°				
Fixture Power	53W	1	1.55	0.26	11524		
Source Flux	7200lm	2	3.10	0.51	2881		
Fixture Flux	5983lm	3	4.65	0.77	1280		
Efficacy	113lm/W	4	6.21	1.02	720		
TS1089	Imax=1601cd/klm	Imax	11524cd	5	7.76	1.28	461

JEDI COMPACT RECESSED

PHOTOMETRY

24.60" FLOOD



2700K		H(m)	D1(m)	D2(m)	Emax(lx)		
Ra84			85°	32°			
Fixture Power	28W	1	1.84	0.57	2259		
Source Flux	3230lm	2	3.68	1.14	565		
Fixture Flux	2413lm	3	5.52	1.70	251		
Efficacy	86lm/W	4	7.36	2.27	141		
TS1084	Imax=699cd/klm	Imax	2259cd	5	9.20	2.84	90



3000K		H(m)	D1(m)	D2(m)	Emax(lx)		
Ra84			85°	32°			
Fixture Power	28W	1	1.84	0.57	2406		
Source Flux	3440lm	2	3.68	1.14	601		
Fixture Flux	2570lm	3	5.52	1.70	267		
Efficacy	92lm/W	4	7.36	2.27	150		
TS1084	Imax=699cd/klm	Imax	2406cd	5	9.20	2.84	96



3500K		H(m)	D1(m)	D2(m)	Emax(lx)		
Ra84			85°	32°			
Fixture Power	28W	1	1.84	0.57	2462		
Source Flux	3520lm	2	3.68	1.14	615		
Fixture Flux	2630lm	3	5.52	1.70	274		
Efficacy	94lm/W	4	7.36	2.27	154		
TS1084	Imax=699cd/klm	Imax	2462cd	5	9.20	2.84	98



4000K		H(m)	D1(m)	D2(m)	Emax(lx)		
Ra84			85°	32°			
Fixture Power	28W	1	1.84	0.57	2518		
Source Flux	3600lm	2	3.68	1.14	629		
Fixture Flux	2690lm	3	5.52	1.70	280		
Efficacy	96lm/W	4	7.36	2.27	157		
TS1084	Imax=699cd/klm	Imax	2518cd	5	9.20	2.84	101

35.63" FLOOD



2700K		H(m)	D1(m)	D2(m)	Emax(lx)		
Ra84			85°	32°			
Fixture Power	40W	1	1.84	0.57	3389		
Source Flux	4845lm	2	3.68	1.14	847		
Fixture Flux	3620lm	3	5.52	1.70	377		
Efficacy	91lm/W	4	7.36	2.27	212		
TS1085	Imax=699cd/klm	Imax	3389cd	5	9.20	2.84	136



3000K		H(m)	D1(m)	D2(m)	Emax(lx)		
Ra84			85°	32°			
Fixture Power	40W	1	1.84	0.57	3609		
Source Flux	5160lm	2	3.68	1.14	902		
Fixture Flux	3856lm	3	5.52	1.70	401		
Efficacy	96lm/W	4	7.36	2.27	226		
TS1085	Imax=699cd/klm	Imax	3609cd	5	9.20	2.84	144



3500K		H(m)	D1(m)	D2(m)	Emax(lx)		
Ra84			85°	32°			
Fixture Power	40W	1	1.84	0.57	3693		
Source Flux	5280lm	2	3.68	1.14	923		
Fixture Flux	3945lm	3	5.52	1.70	410		
Efficacy	99lm/W	4	7.36	2.27	231		
TS1085	Imax=699cd/klm	Imax	3693cd	5	9.20	2.84	148



4000K		H(m)	D1(m)	D2(m)	Emax(lx)		
Ra84			85°	32°			
Fixture Power	40W	1	1.84	0.57	3777		
Source Flux	5400lm	2	3.68	1.14	944		
Fixture Flux	4035lm	3	5.52	1.70	420		
Efficacy	101lm/W	4	7.36	2.27	236		
TS1085	Imax=699cd/klm	Imax	3777cd	5	9.20	2.84	151

46.65" FLOOD



2700K		H(m)	D1(m)	D2(m)	Emax(lx)		
Ra84			85°	32°			
Fixture Power	53W	1	1.84	0.57	4518		
Source Flux	6460lm	2	3.68	1.14	1130		
Fixture Flux	4827lm	3	5.52	1.70	502		
Efficacy	91lm/W	4	7.36	2.27	282		
TS1085	Imax=699cd/klm	Imax	4518cd	5	9.20	2.84	181



3000K		H(m)	D1(m)	D2(m)	Emax(lx)		
Ra84			85°	32°			
Fixture Power	53W	1	1.84	0.57	4812		
Source Flux	6880lm	2	3.68	1.14	1203		
Fixture Flux	5141lm	3	5.52	1.70	535		
Efficacy	97lm/W	4	7.36	2.27	301		
TS1085	Imax=699cd/klm	Imax	4812cd	5	9.20	2.84	192



3500K		H(m)	D1(m)	D2(m)	Emax(lx)		
Ra84			85°	32°			
Fixture Power	53W	1	1.84	0.57	4924		
Source Flux	7040lm	2	3.68	1.14	1231		
Fixture Flux	5260lm	3	5.52	1.70	547		
Efficacy	99lm/W	4	7.36	2.27	308		
TS1085	Imax=699cd/klm	Imax	4924cd	5	9.20	2.84	197



4000K		H(m)	D1(m)	D2(m)	Emax(lx)		
Ra84			85°	32°			
Fixture Power	53W	1	1.84	0.57	5036		
Source Flux	7200lm	2	3.68	1.14	1259		
Fixture Flux	5380lm	3	5.52	1.70	560		
Efficacy	102lm/W	4	7.36	2.27	315		
TS1085	Imax=699cd/klm	Imax	5036cd	5	9.20	2.84	201

JEDI COMPACT RECESSED

PHOTOMETRY

24.60" SPOT

2700K		H(m)	D(m)	Emax(lx)	
Ra84		11°			
Fixture Power	26W	1	0.20	36451	
Source Flux	2862lm	2	0.40	9113	
Fixture Flux	2371lm	3	0.59	4050	
Efficacy	91lm/W	4	0.79	2278	
TS1339	I _{max} =12736cd/klm	I _{max}	36451cd	5	0.99 1458

3000K		H(m)	D(m)	Emax(lx)	
Ra84		11°			
Fixture Power	26W	1	0.20	39584	
Source Flux	3108lm	2	0.40	9896	
Fixture Flux	2575lm	3	0.59	4398	
Efficacy	99lm/W	4	0.79	2474	
TS1339	I _{max} =12736cd/klm	I _{max}	39584cd	5	0.99 1583

3500K		H(m)	D(m)	Emax(lx)	
Ra84		11°			
Fixture Power	26W	1	0.20	40806	
Source Flux	3204lm	2	0.40	10202	
Fixture Flux	2655lm	3	0.59	4534	
Efficacy	102lm/W	4	0.79	2550	
TS1339	I _{max} =12736cd/klm	I _{max}	40806cd	5	0.99 1632

4000K		H(m)	D(m)	Emax(lx)	
Ra84		11°			
Fixture Power	26W	1	0.20	42182	
Source Flux	3312lm	2	0.40	10545	
Fixture Flux	2744lm	3	0.59	4687	
Efficacy	106lm/W	4	0.79	2636	
TS1339	I _{max} =12736cd/klm	I _{max}	42182cd	5	0.99 1687

35.63" SPOT

2700K		H(m)	D(m)	Emax(lx)	
Ra84		11°			
Fixture Power	37W	1	0.20	54676	
Source Flux	4293lm	2	0.40	13669	
Fixture Flux	3557lm	3	0.59	6075	
Efficacy	96lm/W	4	0.79	3417	
TS1339	I _{max} =12736cd/klm	I _{max}	54676cd	5	0.99 2187

3000K		H(m)	D(m)	Emax(lx)	
Ra84		11°			
Fixture Power	37W	1	0.20	59376	
Source Flux	4662lm	2	0.40	14844	
Fixture Flux	3863lm	3	0.59	6597	
Efficacy	104lm/W	4	0.79	3711	
TS1339	I _{max} =12736cd/klm	I _{max}	59376cd	5	0.99 2375

3500K		H(m)	D(m)	Emax(lx)	
Ra84		11°			
Fixture Power	37W	1	0.20	61210	
Source Flux	4806lm	2	0.40	15302	
Fixture Flux	3982lm	3	0.59	6801	
Efficacy	108lm/W	4	0.79	3826	
TS1339	I _{max} =12736cd/klm	I _{max}	61210cd	5	0.99 2448

4000K		H(m)	D(m)	Emax(lx)	
Ra84		11°			
Fixture Power	37W	1	0.20	63273	
Source Flux	4968lm	2	0.40	15818	
Fixture Flux	4116lm	3	0.59	7030	
Efficacy	111lm/W	4	0.79	3955	
TS1339	I _{max} =12736cd/klm	I _{max}	63273cd	5	0.99 2531

46.65" SPOT

2700K		H(m)	D(m)	Emax(lx)	
Ra84		11°			
Fixture Power	49W	1	0.20	72901	
Source Flux	5724lm	2	0.40	18225	
Fixture Flux	4743lm	3	0.59	8100	
Efficacy	97lm/W	4	0.79	4556	
TS1339	I _{max} =12736cd/klm	I _{max}	72901cd	5	0.99 2916

3000K		H(m)	D(m)	Emax(lx)	
Ra84		11°			
Fixture Power	49W	1	0.20	79167	
Source Flux	6216lm	2	0.40	19792	
Fixture Flux	5151lm	3	0.59	8796	
Efficacy	105lm/W	4	0.79	4948	
TS1339	I _{max} =12736cd/klm	I _{max}	79167cd	5	0.99 3167

3500K		H(m)	D(m)	Emax(lx)	
Ra84		11°			
Fixture Power	49W	1	0.20	81613	
Source Flux	6408lm	2	0.40	20403	
Fixture Flux	5310lm	3	0.59	9068	
Efficacy	108lm/W	4	0.79	5101	
TS1339	I _{max} =12736cd/klm	I _{max}	81613cd	5	0.99 3265

4000K		H(m)	D(m)	Emax(lx)	
Ra84		11°			
Fixture Power	49W	1	0.20	84364	
Source Flux	6624lm	2	0.40	21091	
Fixture Flux	5489lm	3	0.59	9374	
Efficacy	112lm/W	4	0.79	5273	
TS1339	I _{max} =12736cd/klm	I _{max}	84364cd	5	0.99 3375

JEDI COMPACT RECESSED

PHOTOMETRY

24.60" WALL WASHER (WITH LOUVER)

	2700K	H(m)	D1(m)	D2(m)	E _{max} (lx)		
	Ra84		116°	62°			
	Fixture Power	28W	1	3.17	1.49	1802	
	Source Flux	3230lm	2	6.35	2.97	450	
	Fixture Flux	1831lm	3	9.52	4.46	200	
	Efficacy	65lm/W	4	12.70	5.95	113	
TS1094	I _{max} =671cd/klm	I _{max}	2166cd	5	15.87	7.43	72

	3000K	H(m)	D1(m)	D2(m)	E _{max} (lx)		
	Ra84		116°	62°			
	Fixture Power	28W	1	3.17	1.49	1919	
	Source Flux	3440lm	2	6.35	2.97	480	
	Fixture Flux	1950lm	3	9.52	4.46	213	
	Efficacy	70lm/W	4	12.70	5.95	120	
TS1094	I _{max} =671cd/klm	I _{max}	2307cd	5	15.87	7.43	77

	3500K	H(m)	D1(m)	D2(m)	E _{max} (lx)		
	Ra84		116°	62°			
	Fixture Power	28W	1	3.17	1.49	1964	
	Source Flux	3520lm	2	6.35	2.97	491	
	Fixture Flux	1996lm	3	9.52	4.46	218	
	Efficacy	71lm/W	4	12.70	5.95	123	
TS1094	I _{max} =671cd/klm	I _{max}	2360cd	5	15.87	7.43	79

	4000K	H(m)	D1(m)	D2(m)	E _{max} (lx)		
	Ra84		116°	62°			
	Fixture Power	28W	1	3.17	1.49	2008	
	Source Flux	3600lm	2	6.35	2.97	502	
	Fixture Flux	2041lm	3	9.52	4.46	223	
	Efficacy	73lm/W	4	12.70	5.95	126	
TS1094	I _{max} =671cd/klm	I _{max}	2414cd	5	15.87	7.43	80

35.63" WALL WASHER (WITH LOUVER)

	2700K	H(m)	D1(m)	D2(m)	E _{max} (lx)		
	Ra84		116°	62°			
	Fixture Power	40W	1	3.17	1.49	2703	
	Source Flux	4845lm	2	6.35	2.97	676	
	Fixture Flux	2747lm	3	9.52	4.46	300	
	Efficacy	69lm/W	4	12.70	5.95	169	
TS1095	I _{max} =671cd/klm	I _{max}	3249cd	5	15.87	7.43	108

	3000K	H(m)	D1(m)	D2(m)	E _{max} (lx)		
	Ra84		116°	62°			
	Fixture Power	40W	1	3.17	1.49	2879	
	Source Flux	5160lm	2	6.35	2.97	720	
	Fixture Flux	2926lm	3	9.52	4.46	320	
	Efficacy	73lm/W	4	12.70	5.95	180	
TS1095	I _{max} =671cd/klm	I _{max}	3460cd	5	15.87	7.43	115

	3500K	H(m)	D1(m)	D2(m)	E _{max} (lx)		
	Ra84		116°	62°			
	Fixture Power	40W	1	3.17	1.49	2946	
	Source Flux	5280lm	2	6.35	2.97	736	
	Fixture Flux	2994lm	3	9.52	4.46	327	
	Efficacy	75lm/W	4	12.70	5.95	184	
TS1095	I _{max} =671cd/klm	I _{max}	3541cd	5	15.87	7.43	118

	4000K	H(m)	D1(m)	D2(m)	E _{max} (lx)		
	Ra84		116°	62°			
	Fixture Power	40W	1	3.17	1.49	3012	
	Source Flux	5400lm	2	6.35	2.97	753	
	Fixture Flux	3062lm	3	9.52	4.46	335	
	Efficacy	77lm/W	4	12.70	5.95	188	
TS1095	I _{max} =671cd/klm	I _{max}	3621cd	5	15.87	7.43	120

46.65" WALL WASHER (WITH LOUVER)

	2700K	H(m)	D1(m)	D2(m)	E _{max} (lx)		
	Ra84		116°	62°			
	Fixture Power	53W	1	3.17	1.49	3604	
	Source Flux	6460lm	2	6.35	2.97	901	
	Fixture Flux	3663lm	3	9.52	4.46	400	
	Efficacy	69lm/W	4	12.70	5.95	225	
TS1095	I _{max} =671cd/klm	I _{max}	4332cd	5	15.87	7.43	144

	3000K	H(m)	D1(m)	D2(m)	E _{max} (lx)		
	Ra84		116°	62°			
	Fixture Power	53W	1	3.17	1.49	3838	
	Source Flux	6880lm	2	6.35	2.97	960	
	Fixture Flux	3901lm	3	9.52	4.46	426	
	Efficacy	74lm/W	4	12.70	5.95	240	
TS1095	I _{max} =671cd/klm	I _{max}	4613cd	5	15.87	7.43	154

	3500K	H(m)	D1(m)	D2(m)	E _{max} (lx)		
	Ra84		116°	62°			
	Fixture Power	53W	1	3.17	1.49	3927	
	Source Flux	7040lm	2	6.35	2.97	982	
	Fixture Flux	3992lm	3	9.52	4.46	436	
	Efficacy	75lm/W	4	12.70	5.95	245	
TS1095	I _{max} =671cd/klm	I _{max}	4721cd	5	15.87	7.43	157

	4000K	H(m)	D1(m)	D2(m)	E _{max} (lx)		
	Ra84		116°	62°			
	Fixture Power	53W	1	3.17	1.49	4017	
	Source Flux	7200lm	2	6.35	2.97	1004	
	Fixture Flux	4082lm	3	9.52	4.46	446	
	Efficacy	77lm/W	4	12.70	5.95	251	
TS1095	I _{max} =671cd/klm	I _{max}	4828cd	5	15.87	7.43	161

JEDI COMPACT RECESSED

PHOTOMETRY

24.60" WALL GRAZER (WITH LOUVER)

	2700K	H(m)	D1(m)	D2(m)	E _{max} (lx)		
	Ra84		80°	13°			
	Fixture Power	28W	1	1.68	0.23	3573	
	Source Flux	3230lm	2	3.36	0.46	893	
	Fixture Flux	1712lm	3	5.04	0.68	397	
	Efficacy	61lm/W	4	6.72	0.91	223	
TS1090	I _{max} =1106cd/klm	I _{max}	3573cd	5	8.40	1.14	143

	3000K	H(m)	D1(m)	D2(m)	E _{max} (lx)		
	Ra84		80°	13°			
	Fixture Power	28W	1	1.68	0.23	3805	
	Source Flux	3440lm	2	3.36	0.46	951	
	Fixture Flux	1824lm	3	5.04	0.68	423	
	Efficacy	65lm/W	4	6.72	0.91	238	
TS1090	I _{max} =1106cd/klm	I _{max}	3805cd	5	8.40	1.14	152

	3500K	H(m)	D1(m)	D2(m)	E _{max} (lx)		
	Ra84		80°	13°			
	Fixture Power	28W	1	1.68	0.23	3894	
	Source Flux	3520lm	2	3.36	0.46	973	
	Fixture Flux	1866lm	3	5.04	0.68	433	
	Efficacy	67lm/W	4	6.72	0.91	243	
TS1090	I _{max} =1106cd/klm	I _{max}	3894cd	5	8.40	1.14	156

	4000K	H(m)	D1(m)	D2(m)	E _{max} (lx)		
	Ra84		80°	13°			
	Fixture Power	28W	1	1.68	0.23	3982	
	Source Flux	3600lm	2	3.36	0.46	996	
	Fixture Flux	1908lm	3	5.04	0.68	442	
	Efficacy	68lm/W	4	6.72	0.91	249	
TS1090	I _{max} =1106cd/klm	I _{max}	3982cd	5	8.40	1.14	159

35.63" WALL GRAZER (WITH LOUVER)

	2700K	H(m)	D1(m)	D2(m)	E _{max} (lx)		
	Ra84		80°	13°			
	Fixture Power	40W	1	1.68	0.23	5359	
	Source Flux	4845lm	2	3.36	0.46	1340	
	Fixture Flux	2568lm	3	5.04	0.68	595	
	Efficacy	64lm/W	4	6.72	0.91	335	
TS1091	I _{max} =1106cd/klm	I _{max}	5359cd	5	8.40	1.14	214

	3000K	H(m)	D1(m)	D2(m)	E _{max} (lx)		
	Ra84		80°	13°			
	Fixture Power	40W	1	1.68	0.23	5707	
	Source Flux	5160lm	2	3.36	0.46	1427	
	Fixture Flux	2735lm	3	5.04	0.68	634	
	Efficacy	68lm/W	4	6.72	0.91	357	
TS1091	I _{max} =1106cd/klm	I _{max}	5707cd	5	8.40	1.14	228

	3500K	H(m)	D1(m)	D2(m)	E _{max} (lx)		
	Ra84		80°	13°			
	Fixture Power	40W	1	1.68	0.23	5840	
	Source Flux	5280lm	2	3.36	0.46	1460	
	Fixture Flux	2798lm	3	5.04	0.68	649	
	Efficacy	70lm/W	4	6.72	0.91	365	
TS1091	I _{max} =1106cd/klm	I _{max}	5840cd	5	8.40	1.14	234

	4000K	H(m)	D1(m)	D2(m)	E _{max} (lx)		
	Ra84		80°	13°			
	Fixture Power	40W	1	1.68	0.23	5973	
	Source Flux	5400lm	2	3.36	0.46	1493	
	Fixture Flux	2862lm	3	5.04	0.68	664	
	Efficacy	72lm/W	4	6.72	0.91	373	
TS1091	I _{max} =1106cd/klm	I _{max}	5973cd	5	8.40	1.14	239

46.65" WALL GRAZER (WITH LOUVER)

	2700K	H(m)	D1(m)	D2(m)	E _{max} (lx)		
	Ra84		80°	13°			
	Fixture Power	53W	1	1.68	0.23	7145	
	Source Flux	6460lm	2	3.36	0.46	1786	
	Fixture Flux	3424lm	3	5.04	0.68	794	
	Efficacy	65lm/W	4	6.72	0.91	447	
TS1091	I _{max} =1106cd/klm	I _{max}	7145cd	5	8.40	1.14	286

	3000K	H(m)	D1(m)	D2(m)	E _{max} (lx)		
	Ra84		80°	13°			
	Fixture Power	53W	1	1.68	0.23	7609	
	Source Flux	6880lm	2	3.36	0.46	1902	
	Fixture Flux	3646lm	3	5.04	0.68	845	
	Efficacy	69lm/W	4	6.72	0.91	476	
TS1091	I _{max} =1106cd/klm	I _{max}	7609cd	5	8.40	1.14	304

	3500K	H(m)	D1(m)	D2(m)	E _{max} (lx)		
	Ra84		80°	13°			
	Fixture Power	53W	1	1.68	0.23	7786	
	Source Flux	7040lm	2	3.36	0.46	1947	
	Fixture Flux	3731lm	3	5.04	0.68	865	
	Efficacy	70lm/W	4	6.72	0.91	487	
TS1091	I _{max} =1106cd/klm	I _{max}	7786cd	5	8.40	1.14	311

	4000K	H(m)	D1(m)	D2(m)	E _{max} (lx)		
	Ra84		80°	13°			
	Fixture Power	53W	1	1.68	0.23	7963	
	Source Flux	7200lm	2	3.36	0.46	1991	
	Fixture Flux	3816lm	3	5.04	0.68	885	
	Efficacy	72lm/W	4	6.72	0.91	498	
TS1091	I _{max} =1106cd/klm	I _{max}	7963cd	5	8.40	1.14	319

JEDI COMPACT RECESSED

PHOTOMETRY

24.60" FLOOD (WITH LOUVER)

	2700K	H(m)	D1(m)	D2(m)	Emax(lx)		
	Ra84		86°	29°			
	Fixture Power	28W	1	1.86	0.52	1640	
	Source Flux	3230lm	2	3.71	1.05	410	
	Fixture Flux	1412lm	3	5.57	1.57	182	
	Efficacy	50lm/W	4	7.42	2.09	103	
TS1086	I _{max} =508cd/klm	I _{max}	1640cd	5	9.28	2.62	66

	3000K	H(m)	D1(m)	D2(m)	Emax(lx)		
	Ra84		86°	29°			
	Fixture Power	28W	1	1.86	0.52	1747	
	Source Flux	3440lm	2	3.71	1.05	437	
	Fixture Flux	1503lm	3	5.57	1.57	194	
	Efficacy	54lm/W	4	7.42	2.09	109	
TS1086	I _{max} =508cd/klm	I _{max}	1747cd	5	9.28	2.62	70

	3500K	H(m)	D1(m)	D2(m)	Emax(lx)		
	Ra84		86°	29°			
	Fixture Power	28W	1	1.86	0.52	1788	
	Source Flux	3520lm	2	3.71	1.05	447	
	Fixture Flux	1538lm	3	5.57	1.57	199	
	Efficacy	55lm/W	4	7.42	2.09	112	
TS1086	I _{max} =508cd/klm	I _{max}	1788cd	5	9.28	2.62	72

	4000K	H(m)	D1(m)	D2(m)	Emax(lx)		
	Ra84		86°	29°			
	Fixture Power	28W	1	1.86	0.52	1828	
	Source Flux	3600lm	2	3.71	1.05	457	
	Fixture Flux	1573lm	3	5.57	1.57	203	
	Efficacy	56lm/W	4	7.42	2.09	114	
TS1086	I _{max} =508cd/klm	I _{max}	1828cd	5	9.28	2.62	73

35.63" FLOOD (WITH LOUVER)

	2700K	H(m)	D1(m)	D2(m)	Emax(lx)		
	Ra84		86°	29°			
	Fixture Power	40W	1	1.86	0.52	2460	
	Source Flux	4845lm	2	3.71	1.05	615	
	Fixture Flux	2117lm	3	5.57	1.57	273	
	Efficacy	53lm/W	4	7.42	2.09	154	
TS1087	I _{max} =508cd/klm	I _{max}	2460cd	5	9.28	2.62	98

	3000K	H(m)	D1(m)	D2(m)	Emax(lx)		
	Ra84		86°	29°			
	Fixture Power	40W	1	1.86	0.52	2620	
	Source Flux	5160lm	2	3.71	1.05	655	
	Fixture Flux	2255lm	3	5.57	1.57	291	
	Efficacy	56lm/W	4	7.42	2.09	164	
TS1087	I _{max} =508cd/klm	I _{max}	2620cd	5	9.28	2.62	105

	3500K	H(m)	D1(m)	D2(m)	Emax(lx)		
	Ra84		86°	29°			
	Fixture Power	40W	1	1.86	0.52	2681	
	Source Flux	5280lm	2	3.71	1.05	670	
	Fixture Flux	2307lm	3	5.57	1.57	298	
	Efficacy	58lm/W	4	7.42	2.09	168	
TS1087	I _{max} =508cd/klm	I _{max}	2681cd	5	9.28	2.62	107

	4000K	H(m)	D1(m)	D2(m)	Emax(lx)		
	Ra84		86°	29°			
	Fixture Power	40W	1	1.86	0.52	2742	
	Source Flux	5400lm	2	3.71	1.05	686	
	Fixture Flux	2360lm	3	5.57	1.57	305	
	Efficacy	59lm/W	4	7.42	2.09	171	
TS1087	I _{max} =508cd/klm	I _{max}	2742cd	5	9.28	2.62	110

46.65" FLOOD (WITH LOUVER)

	2700K	H(m)	D1(m)	D2(m)	Emax(lx)		
	Ra84		86°	29°			
	Fixture Power	53W	1	1.86	0.52	3281	
	Source Flux	6460lm	2	3.71	1.05	820	
	Fixture Flux	2823lm	3	5.57	1.57	365	
	Efficacy	53lm/W	4	7.42	2.09	205	
TS1087	I _{max} =508cd/klm	I _{max}	3281cd	5	9.28	2.62	131

	3000K	H(m)	D1(m)	D2(m)	Emax(lx)		
	Ra84		86°	29°			
	Fixture Power	53W	1	1.86	0.52	3494	
	Source Flux	6880lm	2	3.71	1.05	873	
	Fixture Flux	3007lm	3	5.57	1.57	388	
	Efficacy	57lm/W	4	7.42	2.09	218	
TS1087	I _{max} =508cd/klm	I _{max}	3494cd	5	9.28	2.62	140

	3500K	H(m)	D1(m)	D2(m)	Emax(lx)		
	Ra84		86°	29°			
	Fixture Power	53W	1	1.86	0.52	3575	
	Source Flux	7040lm	2	3.71	1.05	894	
	Fixture Flux	3076lm	3	5.57	1.57	397	
	Efficacy	58lm/W	4	7.42	2.09	223	
TS1087	I _{max} =508cd/klm	I _{max}	3575cd	5	9.28	2.62	143

	4000K	H(m)	D1(m)	D2(m)	Emax(lx)		
	Ra84		86°	29°			
	Fixture Power	53W	1	1.86	0.52	3656	
	Source Flux	7200lm	2	3.71	1.05	914	
	Fixture Flux	3146lm	3	5.57	1.57	406	
	Efficacy	59lm/W	4	7.42	2.09	229	
TS1087	I _{max} =508cd/klm	I _{max}	3656cd	5	9.28	2.62	146