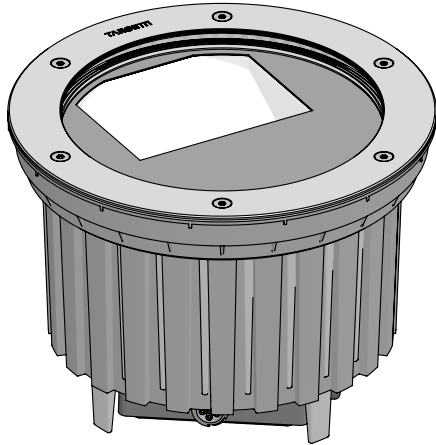




KEPLERO WALL WASHER

KPL41WWL2-

PROFESSIONAL INGROUND LED FIXTURE



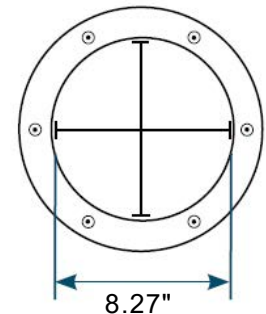
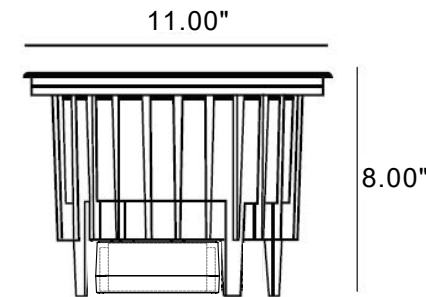
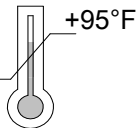
If in doubt about the symbols, please refer to catalog or website

120-277 VAC



IK10

-13°F



KEPLERO WALL WASHER
KPL41WWL2-

WARNING

To ensure maximum efficiency of the product, read the following instructions thoroughly prior to installation.

***Please make sure the fixture is sealed correctly and the trim ring is properly tightened.**



This fixture must be installed by a licensed and qualified electrician. The installer must comply with NEC and local building codes when installing the fixture



Electrical current can cause painful shock, serious injury, or even death. Make sure you turn off the power supply, ground fixture(s), and make sure all electrical connections are correct and secured



This fixture must not be installed during rain, fog, or high humidity



For use in IP67 installations.



Keep the label of the original packaging if any eventual future claims are needed

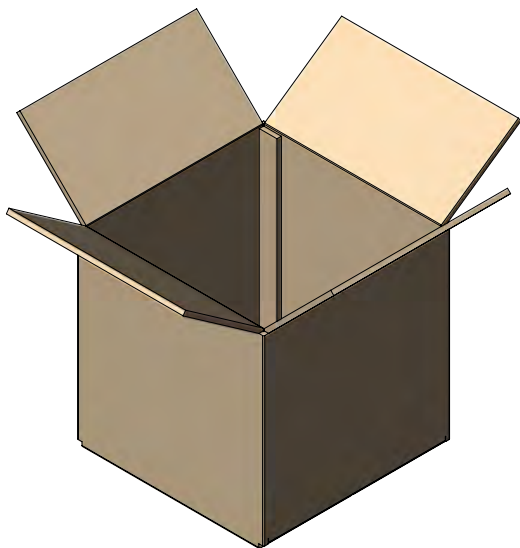
Table of Contents

Packaging Contents
Required Options Sold Separately Choose
Installation Instructions
Finished Installation Example
Maintenance / Support

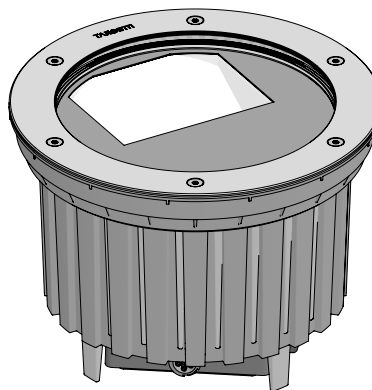
Pg.2
Pg.3-5
Pg.6-16
Pg.17-19
Pg.20

Packaging Contents

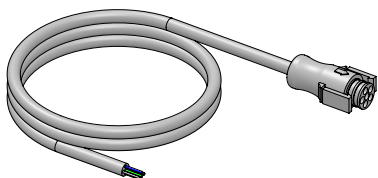
Keplero Wall Washer



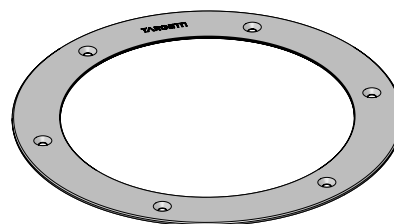
14"x 14"x 10" Box @11 lbs



Led Fixture 1 ea.



Standard 4ft Power Lead 1ea.
Cable with Belden 16-6 600V cable and female DSMT anti-wicking quick disconnect 4ft lead cable.



Stainless Steel Trim Ring 1 ea.
IK10 Glass and Gasket 1ea.



Trim ring screws 6 ea.

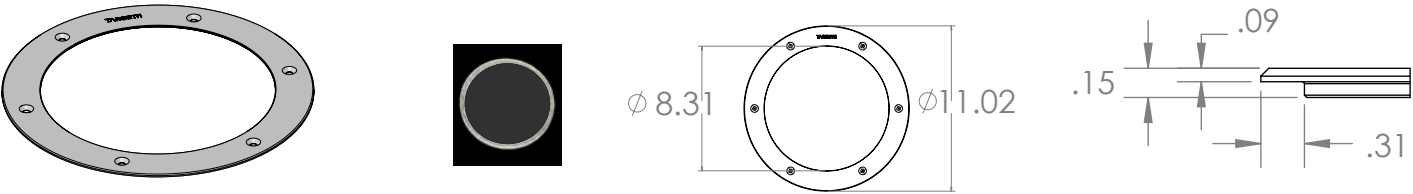


Fastening Screws 3 ea.

Note: SS Trim finish and Glass type to be specified for order (see page 3)

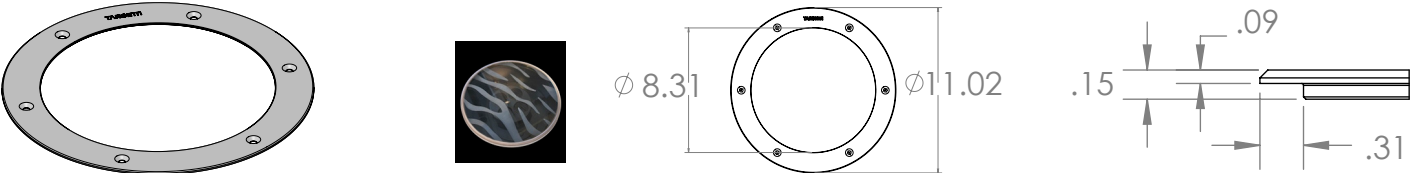
Required Options Sold Separately Choose

ROUND TRIM RING



Round stainless steel (AISI316L) decorative ring . 10mm thick extra clear protective glass. Silicone gasket. Tamper proof (AISI316L) Torx screws.

Finish	● Brushed Natural	● Bronze PVD	● Black PVD
Part No.	1DU2325	1DU2325B	1DU2325K

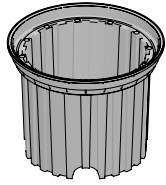


Round stainless steel (AISI316L) decorative ring with anti-slip glass. 10mm thick extra clear protective glass. Silicone gasket. Tamper proof (AISI316L) Torx screws.

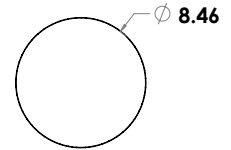
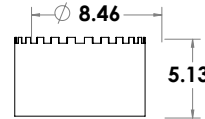
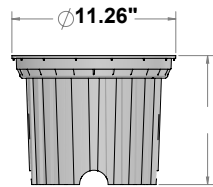
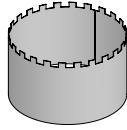
Finish	● Brushed Natural	● Bronze PVD	● Black PVD
Part No.	1DU2325A	1DU2325BA	1DU2325KA

Required Installation Sleeve Options Choose

Installation sleeve

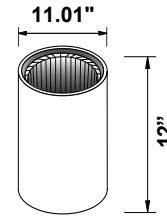


Aluminum J-Box extension sleeve



Installation sleeve for concrete pour applications. Grey Nylon 9" sleeve with 4.77" aluminum extension sleeve. Complete with dedicated cover cap for installations in concrete. Round ring for flush or semi-flush installations.

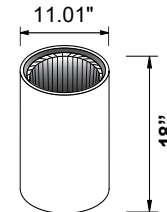
Part No. **1DU2394**



At grade or raised installation sleeve for turf or ground cover applications. 12"H stainless steel, includes factory pre-installed inner PVC installation sleeve. **Not suitable for use with 1DU2394.** (Field cuttable. Used for fixture elevations at grade to 3" above grade). **Required for use with 1DU2530 by NEC.**

Finish ● Deep Black

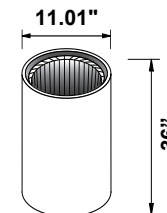
Part No. **1DU434312**



Raised installation sleeve for ground cover (succulents and low level planting) applications. 18"H stainless steel, includes factory pre-installed inner PVC sleeve. **Not suitable with 1DU2394.** (Field cuttable. Used for fixture elevation 7" above grade). **Required for use with 1DU2530 by NEC.**

Finish ● Deep Black

Part No. **1DU434318**

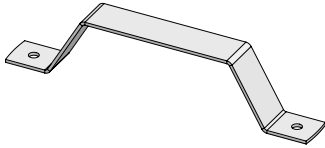


Raised installation sleeve for landscape applications. 36"H stainless steel, includes factory pre-installed inner PVC sleeve. **Not suitable with 1DU2394.** (Field cuttable. Used for fixture elevation 7" above grade). **Required for use with 1DU2530 by NEC.**

Finish ● Deep Black

Part No. **1DU4343**

Installation Accessories (Optional)



Fixture metal maintenance removal handle. Helpful one per 10 fixtures.

Part No. **1E2496**



Anti-vandal torx head. Helpful one per 5 fixtures.

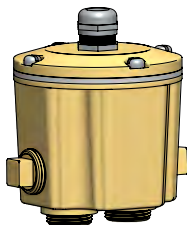
Part No. **1E2945**



Glass suction removal tool. Helpful one per 20 fixtures.

Part No. **1E0388**

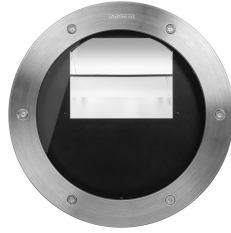
In Grade J - Box Required



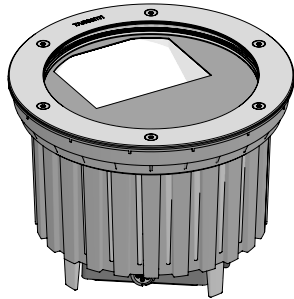
Direct burial brass ingrade j-box. Features stainless steel cover screws and strain relief for power cord, (2) 3/4" NPT bottom holes and (2) 3/4" NPT side holes. Includes (4) 3/4" to 1/2" adapters and (2) 1/2" NPT plugs **(REQUIRED by NEC).**

Part No. **1DU2530**

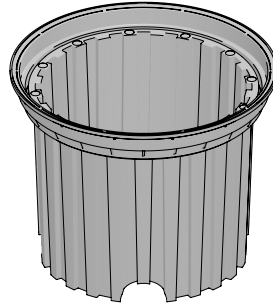
Keplero Wall Washer Installation



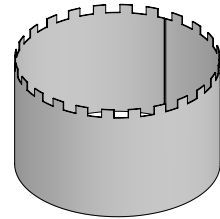
**Keplero Wall Washer
KPL41WWL2-**



Installation Sleeve



Extension Sleeve

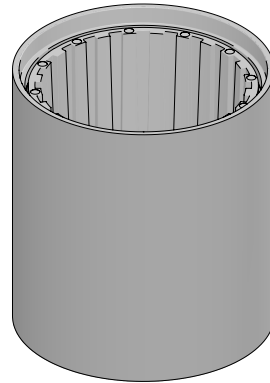


1DU2394

OR

Raised Installation Sleeve

**1DU434312
1DU434318
1DU4343**

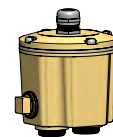
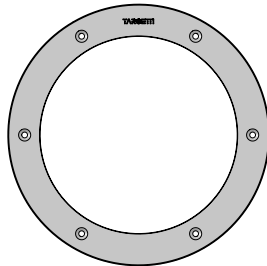


**12" / 18" / 36"
heights available**



Stainless Steel Trim Ring

In Grade J - Box Required



1DU2530

**1DU2325
1DU2325B
1DU2325K**

OR

**1DU2325A
1DU2325BA
1DU2325KA**

All the rings can be installed flush or semi-flush by simply removing the insertion collar from the PVC installation sleeve.

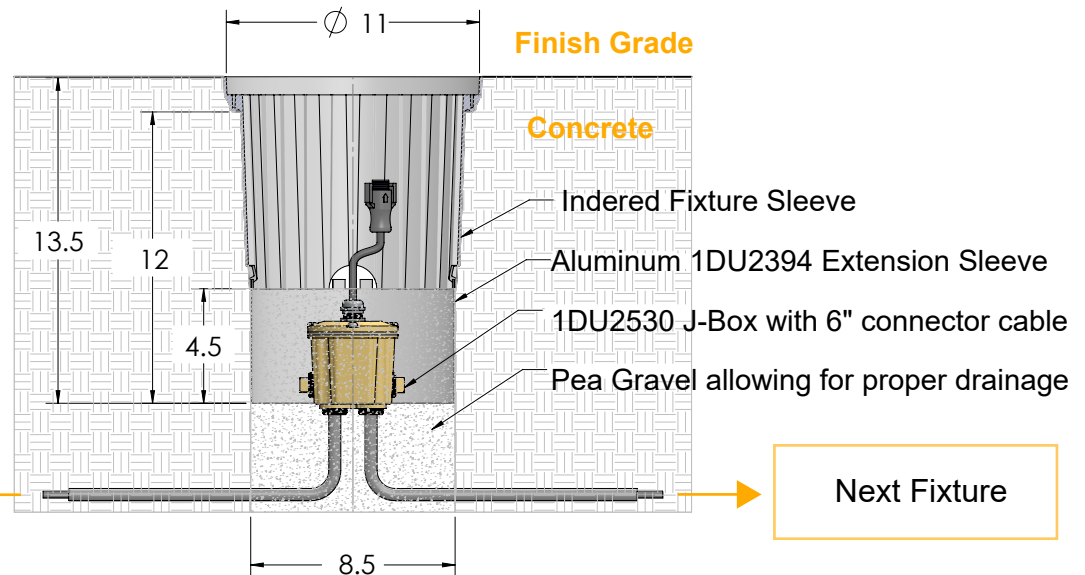
Sleeve Installation Instructions

- Installers will dig out trenches to prep the aluminum extension ring and the PVC sleeve following these steps.
 - Put gravel in the trenches for the J-Box
 - Required by UL for adequate drainage
 - Safety net covers below the J-Box and the conduit pipe to warn diggers what is below
- Position of the J-Box must be at an accessible depth between 8.5-11.5" required for maintenance
- Once J-box and conduits are in position, insert the aluminum extension ring with the installation sleeve in place
 - The gap between the end of the aluminum ring and the middle of the J-Box should have enough room to fix the power cord and the power cord needs to be installed with enough slack to remove the fixture while connected

Flush Mount Sleeve Assembly



*Power Cord to remote driver to be installed with enough slack to remove fixture while connected. Use 4ft Lead cable as required.

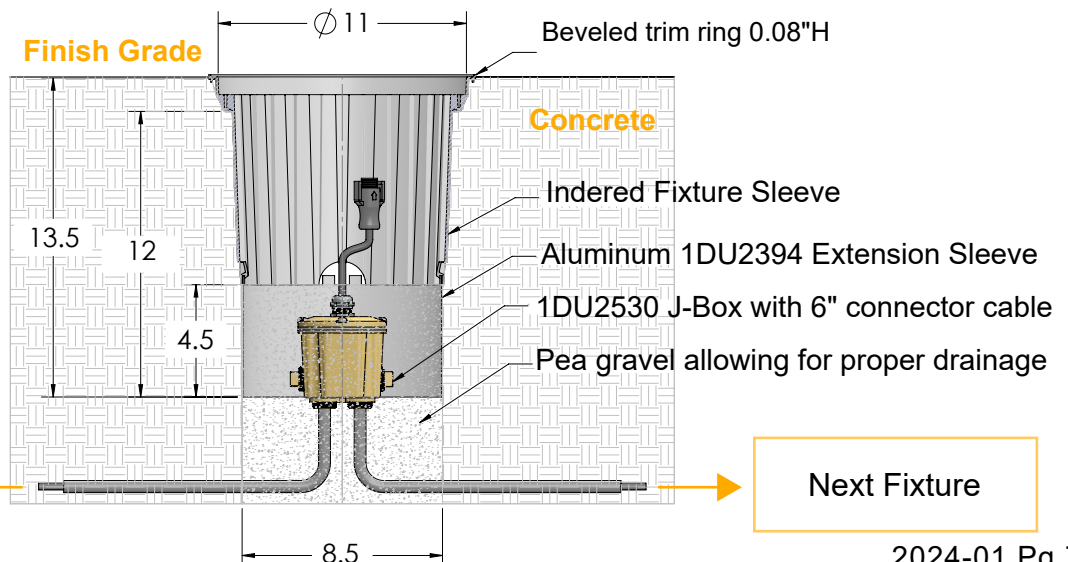


Semi-Flush Mount Sleeve Assembly

- If installation requires semi-flushed finish
 - Break off outer ring of installation sleeve for 0.15" raise
 - Fixture will rest above the sleeve for a covered look

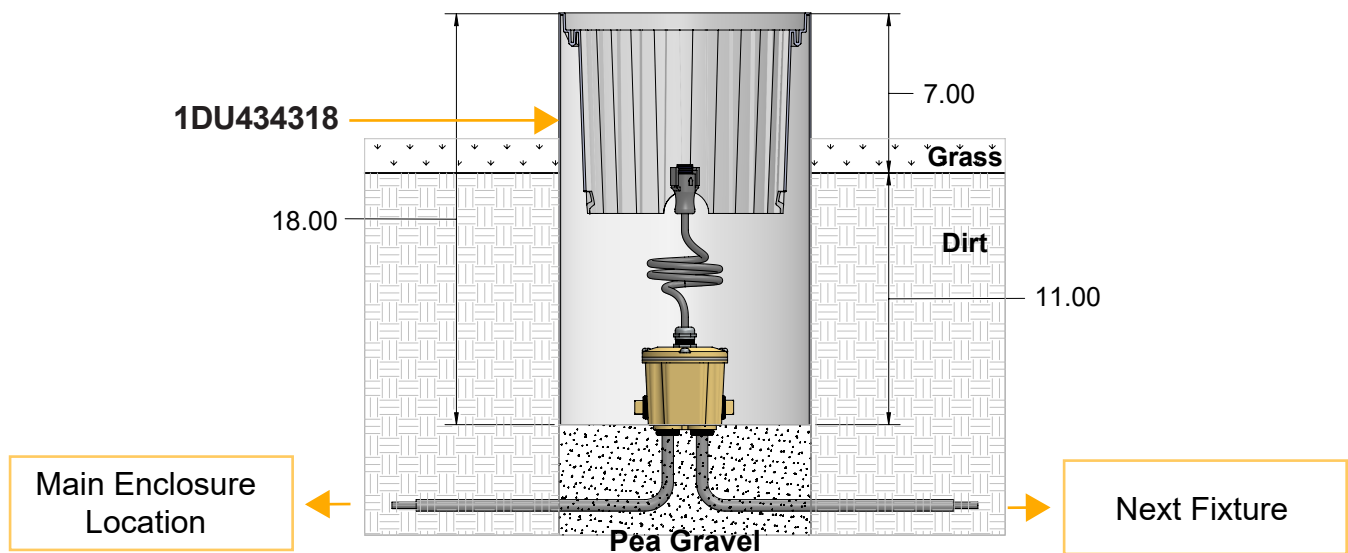
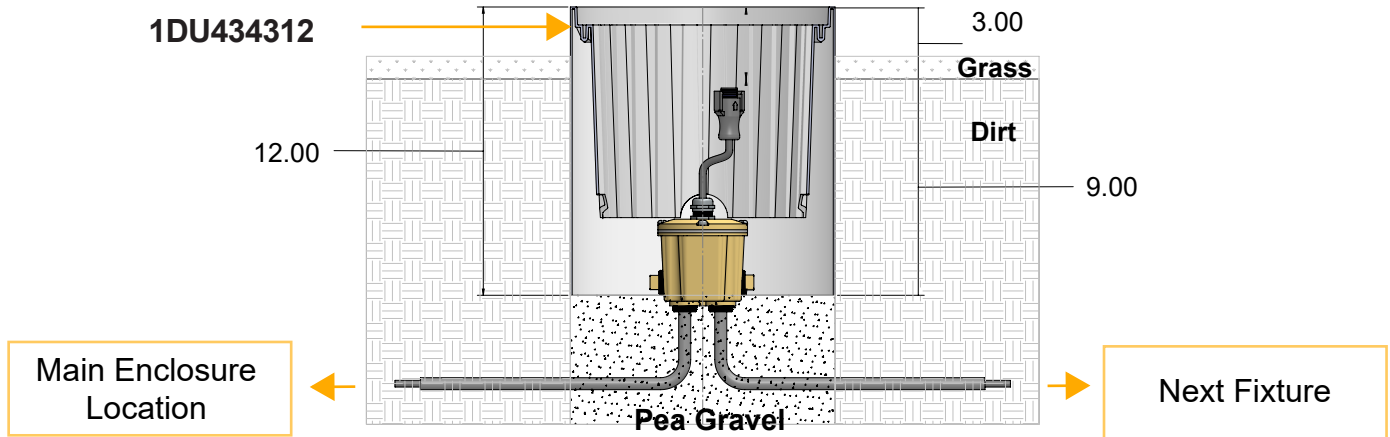


*Power Cord to remote driver to be installed with enough slack to remove fixture while connected. Use 4ft Lead cable as required.



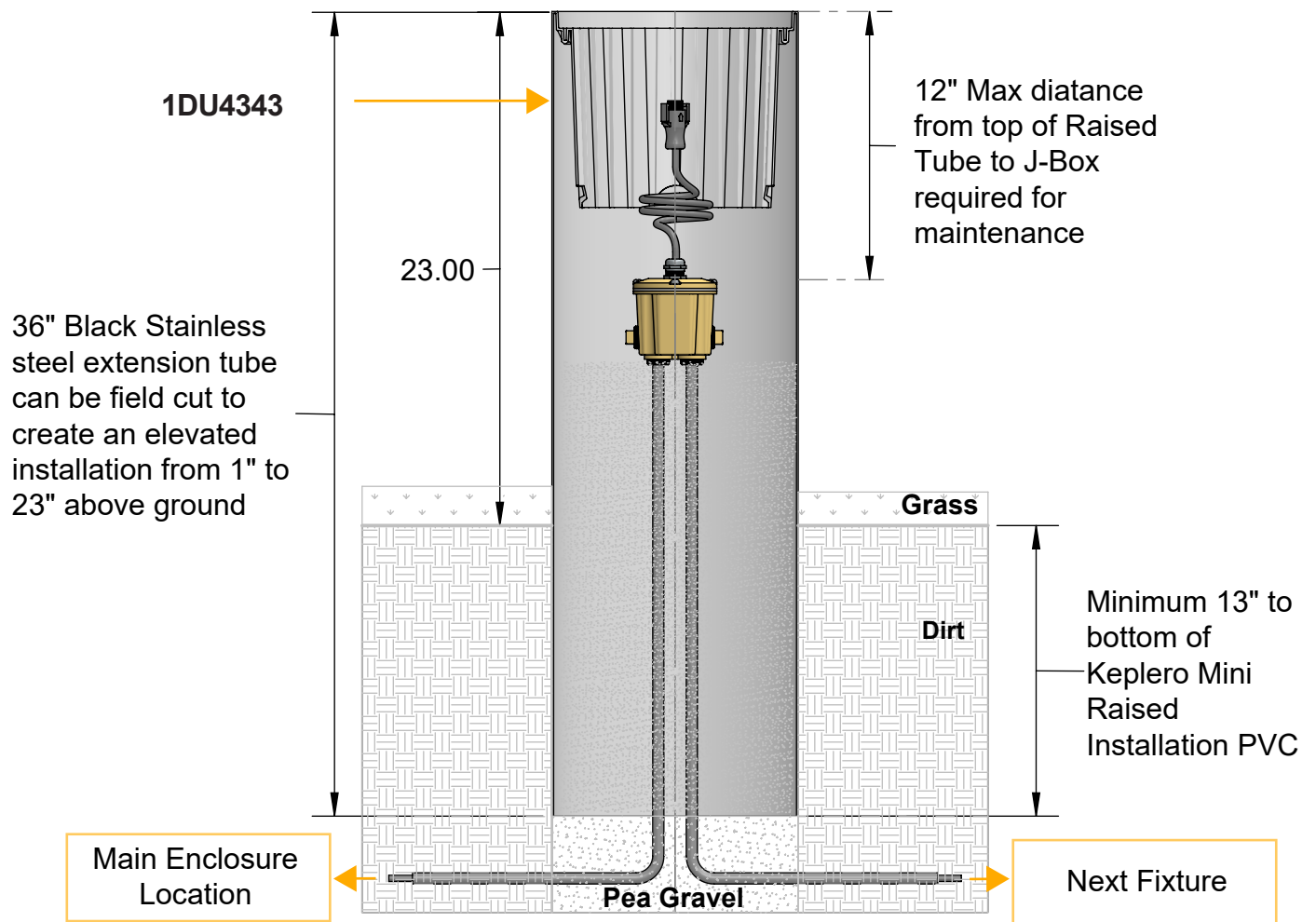
Sleeve Installation Instructions Cont.

- For Power/Dimming Cable
 - Provide 5 conductor 18ga min 600v cable for 120-277v AC Power and 0-10V Dimming.



Sleeve Installation Instructions

- For Raised Installation
 - Installers will dig out trenches to prep the PVC tube
 - Minimum 15" from bottom of raised installation sleeve to ground level Installers will dig out trenches to prep the PVC Insert the PVC pipe with the installation sleeve
 - PVC pipe for raised installation is 36" total This allows the extension PVC tube to be field cut to create an elevated installation with a range of 1" to 21"

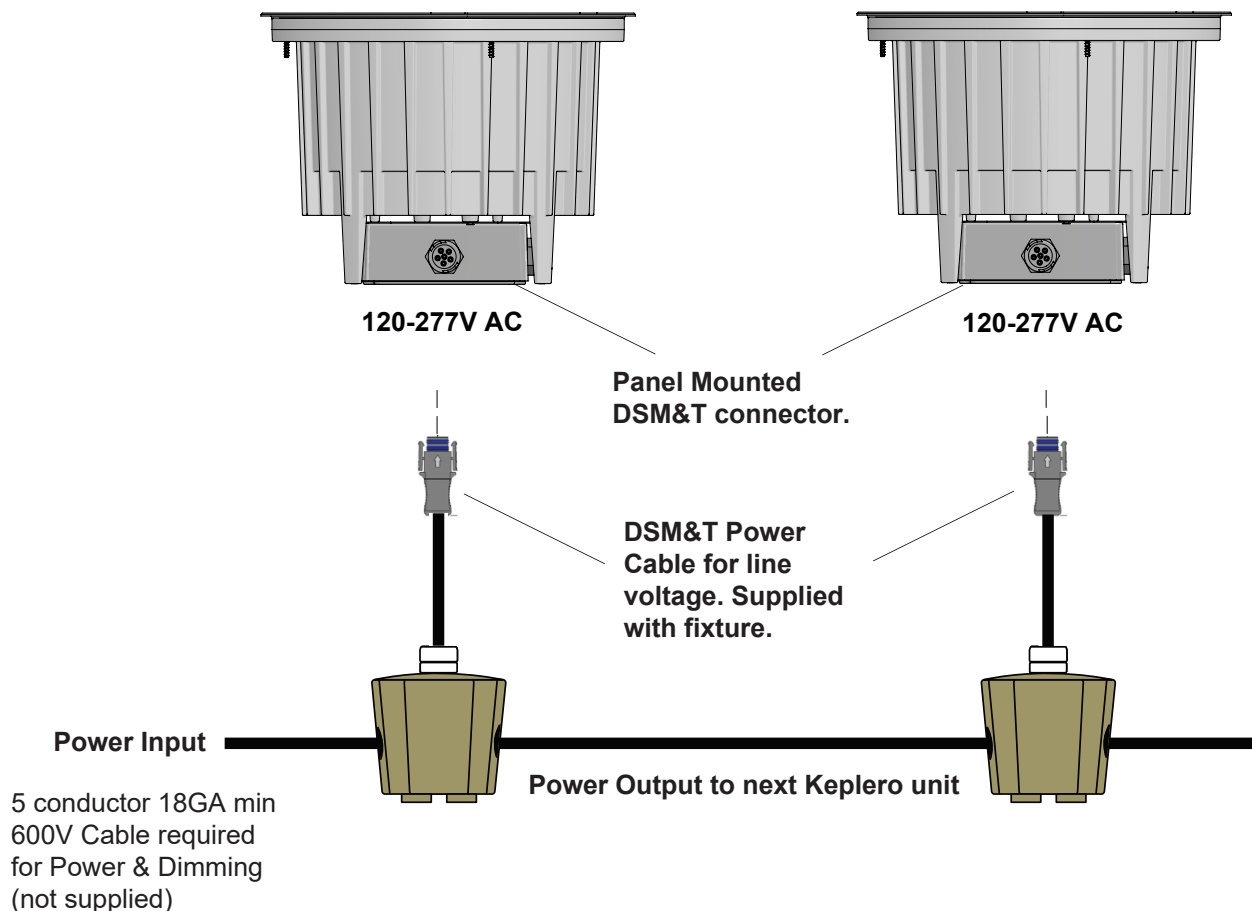


Power and Dimming Wiring Diagram

Please follow the diagram below for proper connections.

Each Keplero is supplied with a 6 conductor 18ga 600v cable for 120v-277v AC Power and 1-10v Dimming. This Power Dimming leadcable to be wired into UL listed waterproof J-Box.

- Cable between fixtures and to main connection box (location) are supplied by connector.



Power Lead Cable

DSMT anti-wicking quick disconnect

Black = Line Voltage Load

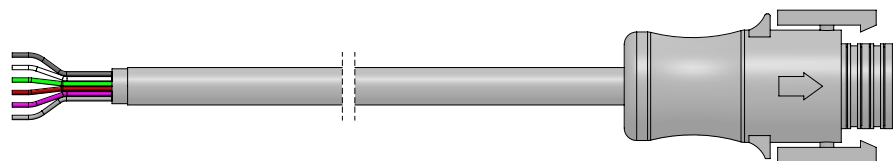
White = Line Voltage Neutral

Green = Ground

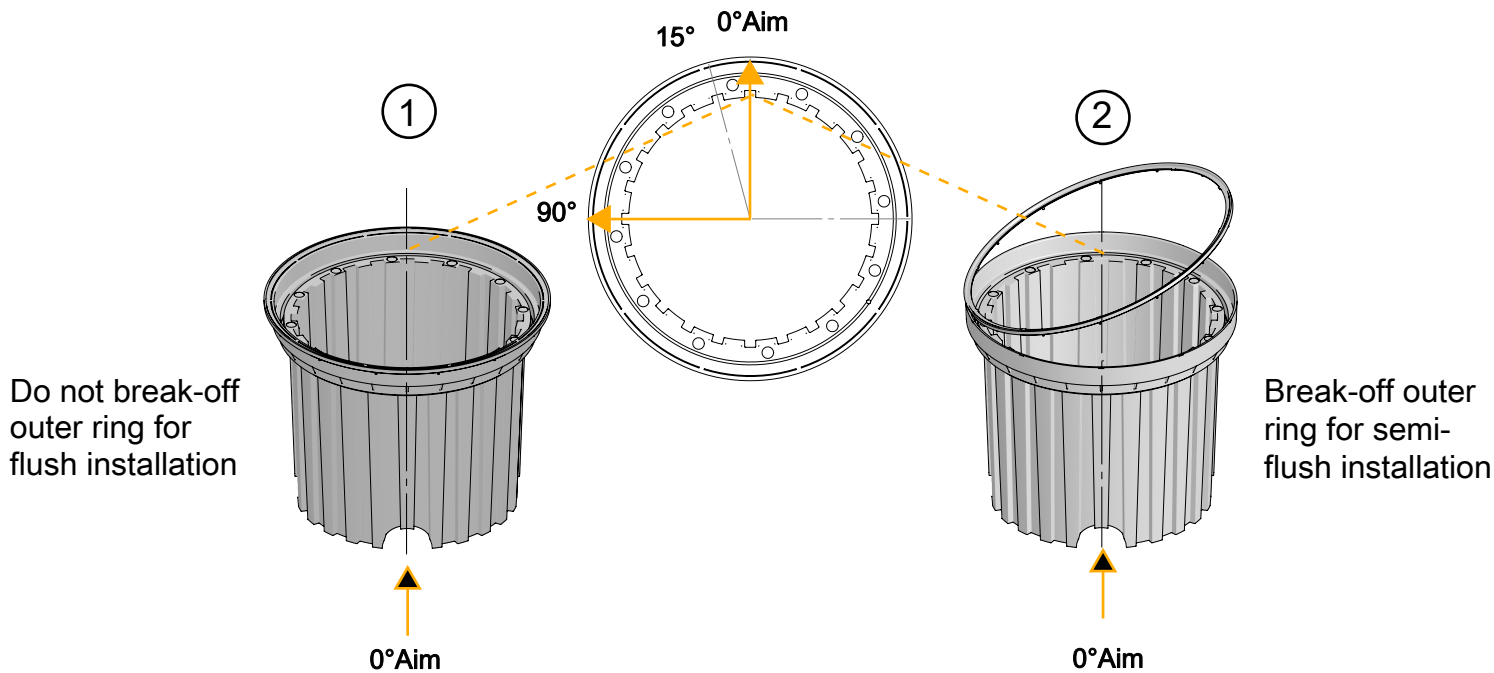
Red = Optional for long distant runs,
(contact factory)

Purple = Positive 0-10V

Grey = Negative 0-10V

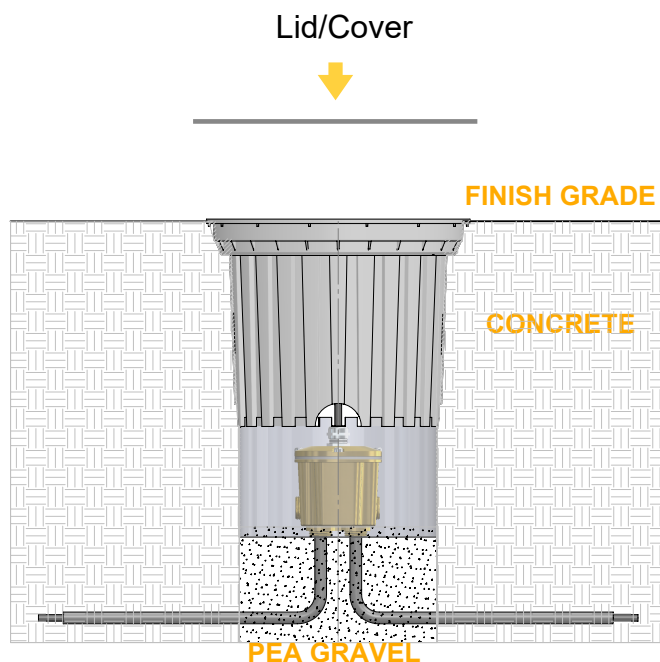


Sleeve Installation Instructions

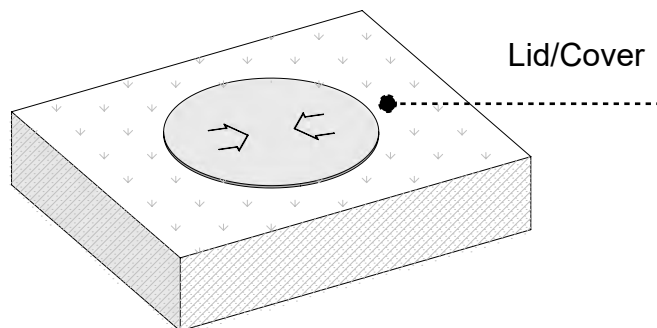


Important Note:
Wall Washer Fixture aiming is depend on sleeve position.
Sleeve must be installed in correct 0° position as show above.

- ③ Insert Installation Sleeve with Aluminum J-Box extension sleeve into position keeping power cord safe



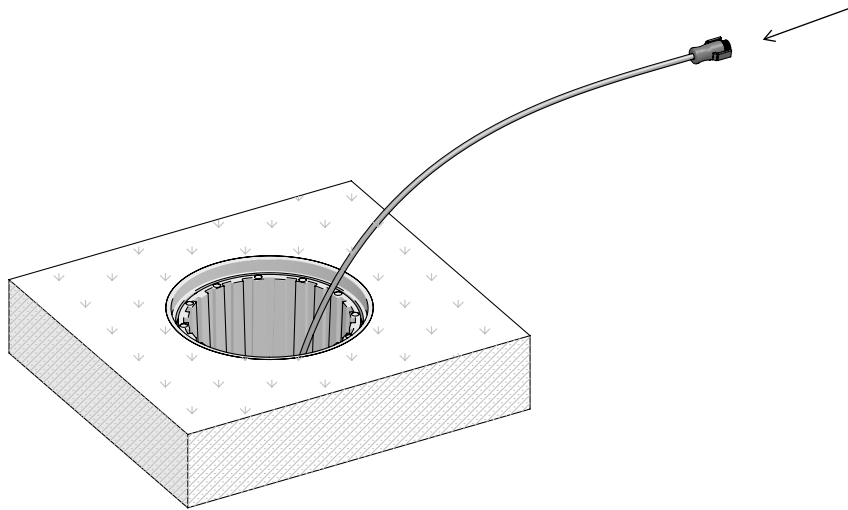
- ④ Keep lid/cover on to prevent debris from entering the sleeve.
Once dirt has been poured and cured, the sleeve cover can be removed, and LED fixture can be connected and installed



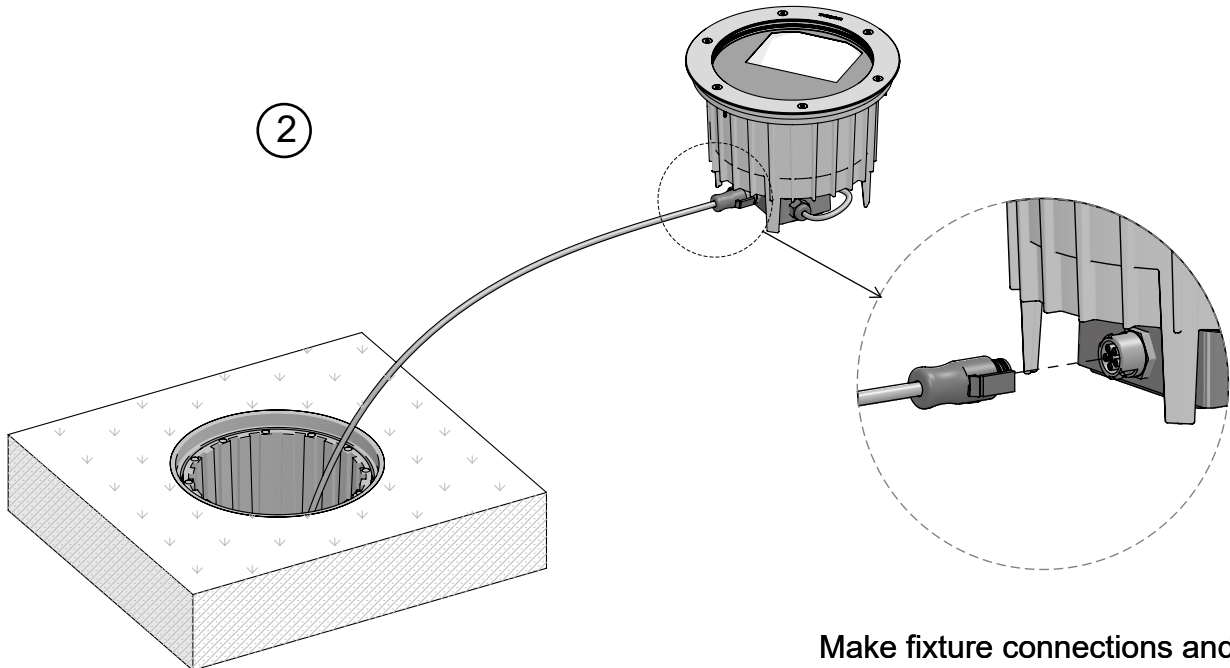
Fixture Wiring Instructions

①

Remove end cap and connect 120-277V IP68 DSMT Lead Cable connector onto fixture's panel mount connector, make sure both locking wings are on lock position before inserting the fixture into the mounting sleeve.



②

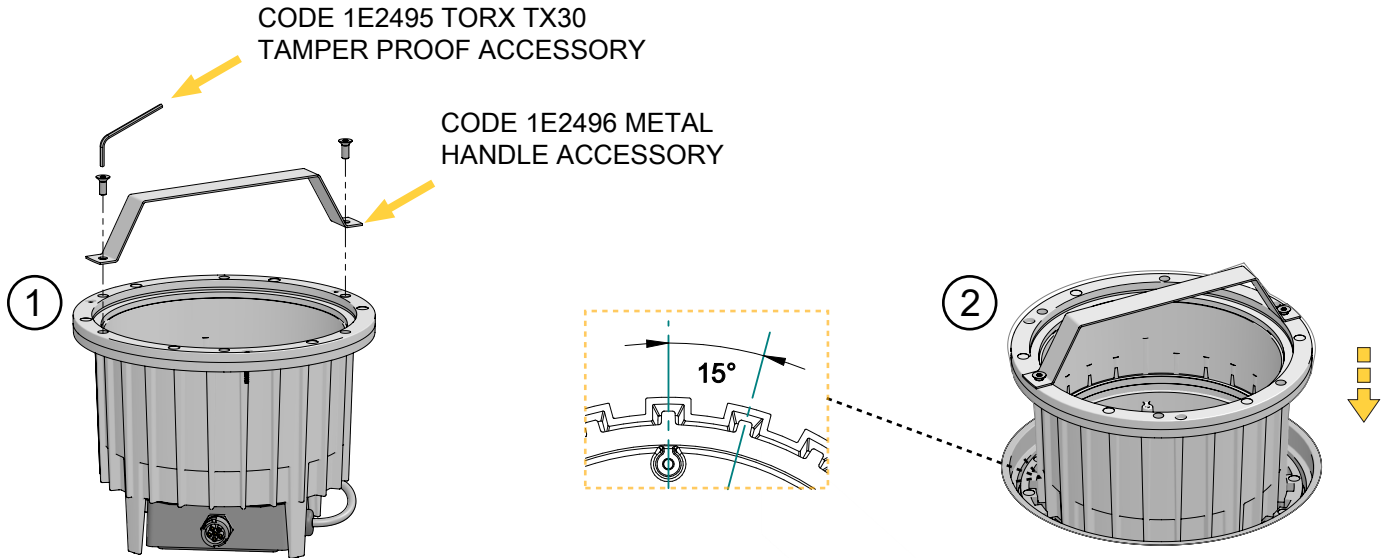


Make fixture connections and lock power cord onto LED fixture

Fixture Installation Instructions

Handle Installation Instructions

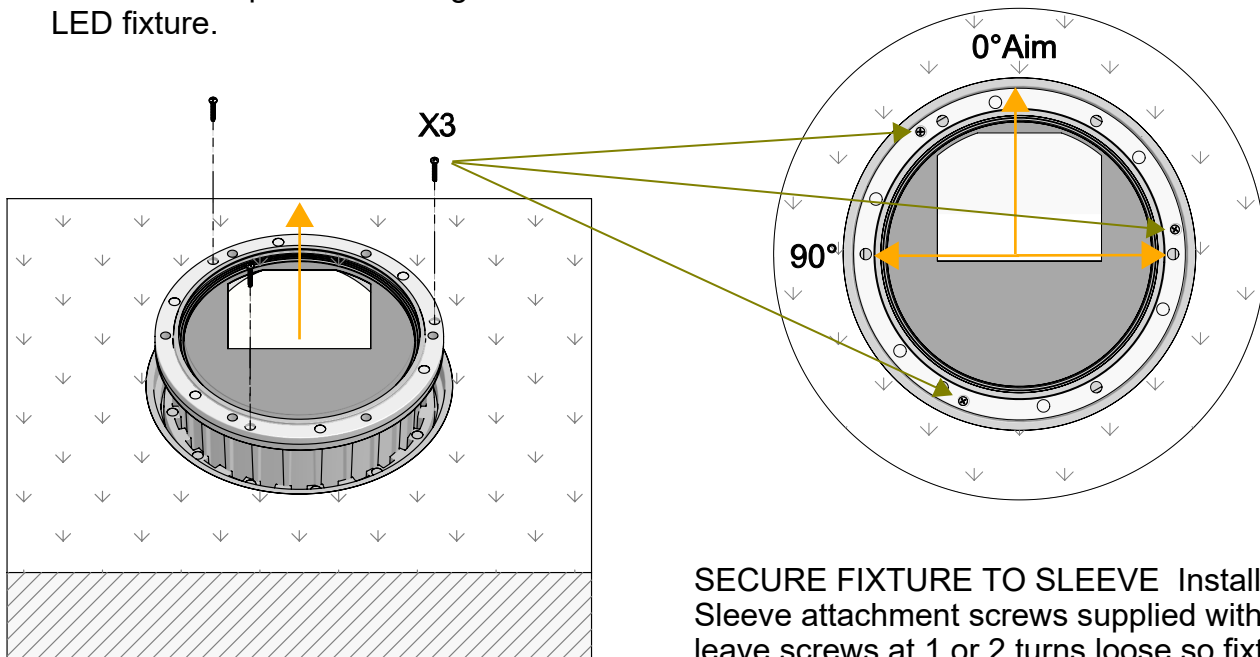
- Inserting fixture into sleeve
 - Fixture will slide into grooves of the installation sleeve with ease
 - To provide a safe and efficient installation of fixture to the sleeve, use metal handle (optional/not included maintenance accessory)



3 Insert LED fixture in at the position and angle desired

- A** Once Fixture has been inserted into the PVC sleeve.
Fasten the fixture onto the sleeve with the 3 screws provided in bag with LED fixture.

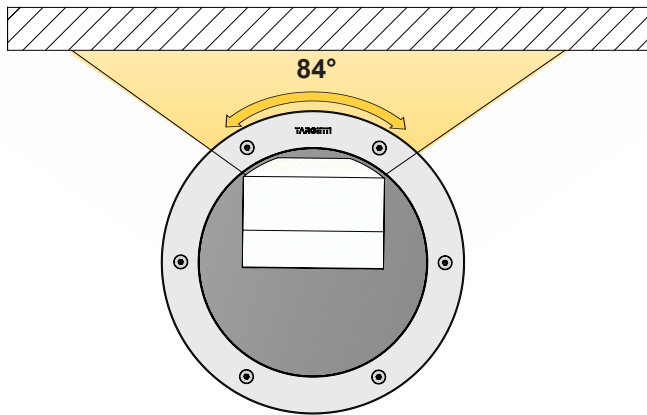
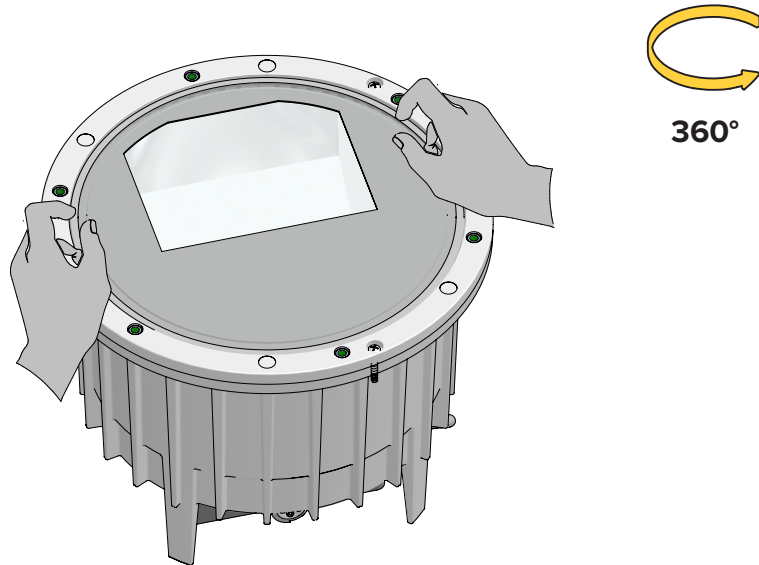
- B** Be-sure 0° Aim of Wall Wash reflector matches 0° Aim of sleeve notch to align perpendicular to wall.



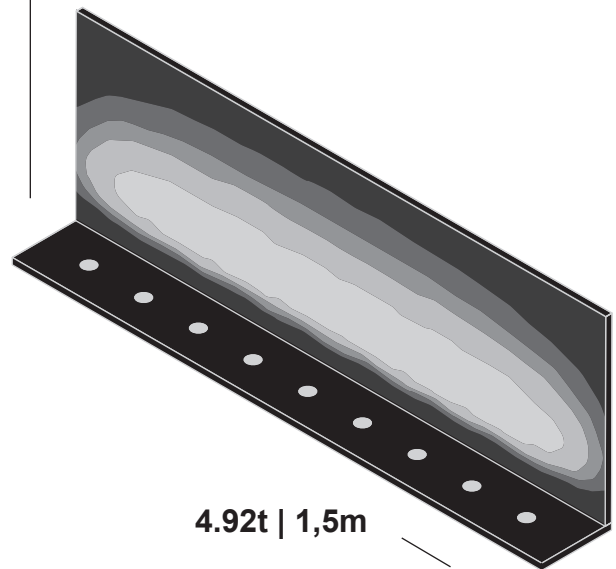
SECURE FIXTURE TO SLEEVE Installation
Sleeve attachment screws supplied with fixture, leave screws at 1 or 2 turns loose so fixture can level up to trim ring.

Light Beam

The **Keplero Wall Washer** versions provide uniform lighting on vertical surfaces. The hybrid optical system, composed of a lens, a holographic filter and specially designed reflector, not only ensure complete uniformity on vertical surfaces but light that grazes very close to the floor.



h. 13.12ft | 4m



4.92t | 1,5m

3.28ft | 1m

OPTICAL PERFORMANCE GUIDE

Illuminance [fc]

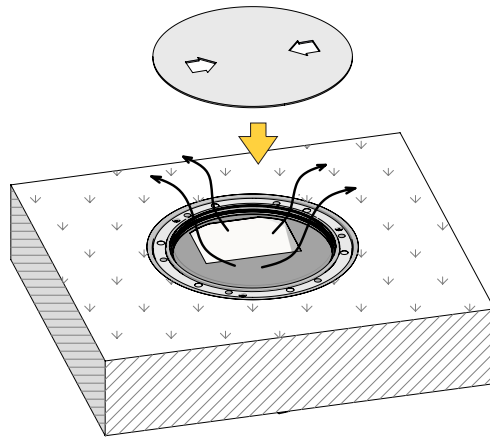


0 5fc 7fc 9fc 14fc 19fc

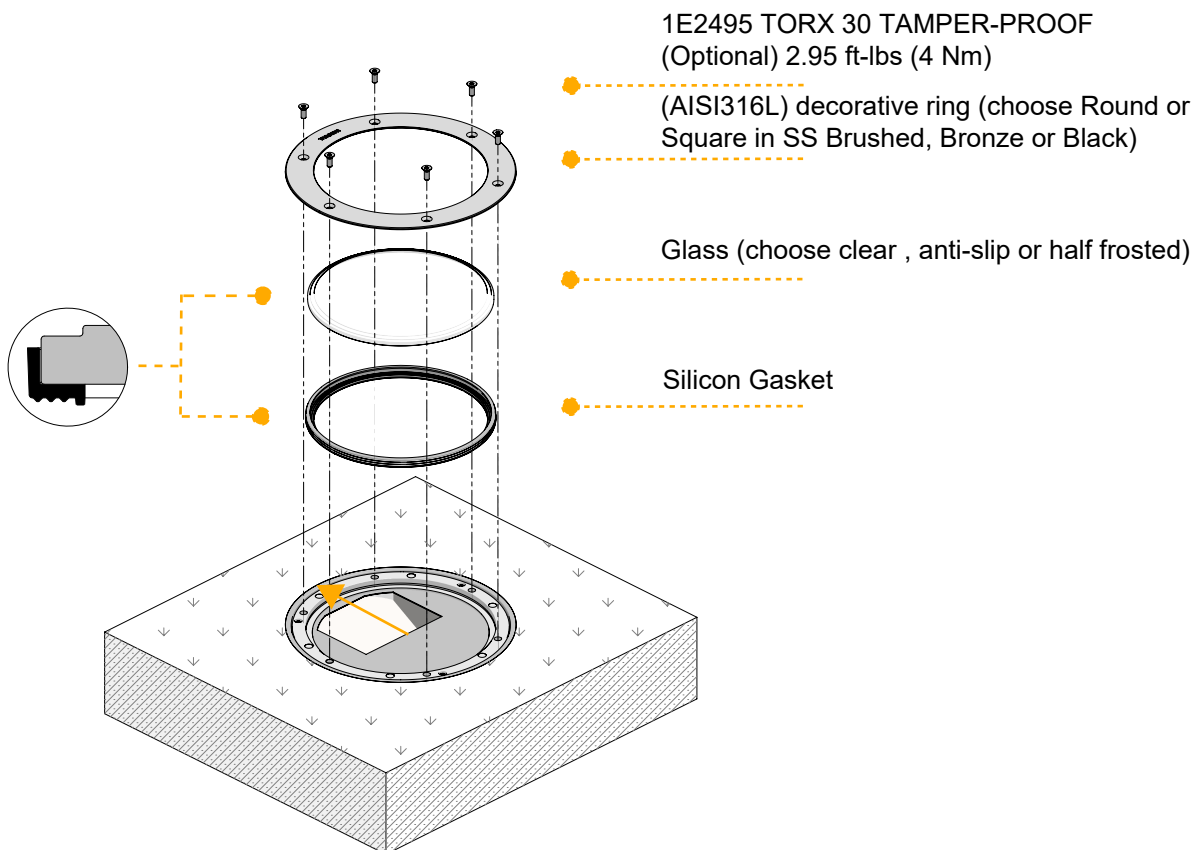
Trim Installation Instructions

Fixture comes with trim ring installed. After trim ring is removed for optics adjustment, follow these next steps to complete a successful trim ring installation:

- Use a tamper-proof torx key (sold separately/optional but recommended) to remove the trim ring, and the glass. Access the optics holder for beam spread angling.
- Once you set position of the optics to the desired lighting angle, **power on fixture and cover with supplied installation sleeve lid and let the fixture operate for 45 minutes before attaching glass and trim ring.**



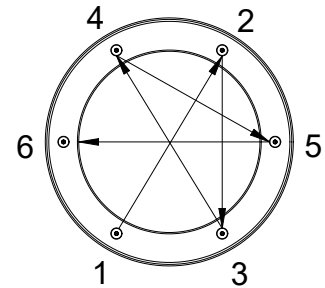
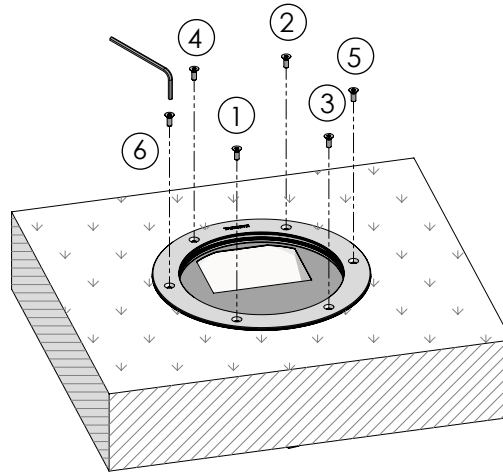
SS Trim and Glass Installation Instructions



Trim Installation Instructions

- When securing the tamper-proof torx screws
 - Apply only 2.95ft-lbs (4Nm) of torque to efficiently secure the fixture
 - Torque screws in X-box formation to provide a tight, even, and secure holding for the trim ring

1E2495 TORX 30 TAMPER-PROOF (Optional) 2.95 ft-lbs (4 Nm)



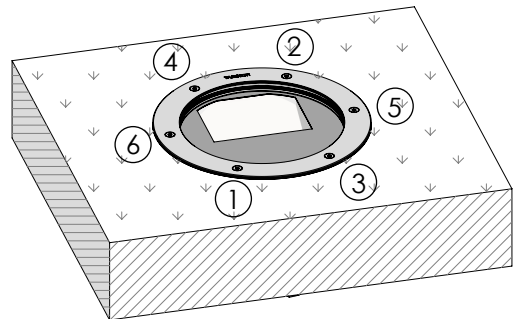
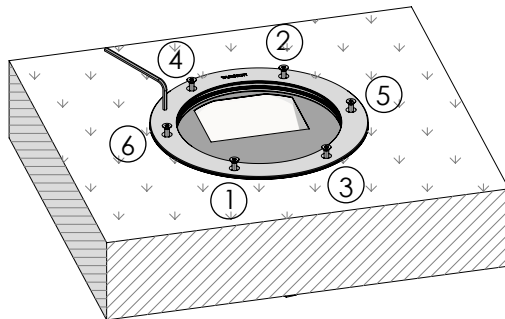
Step1:

Thread screws down in X pattern to hold trim ring flat

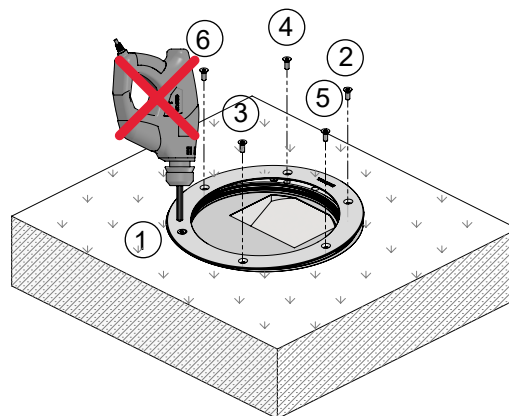


Step2:

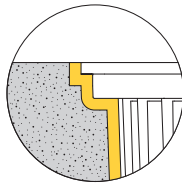
Torque screws down in X pattern to tighten and seal



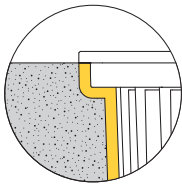
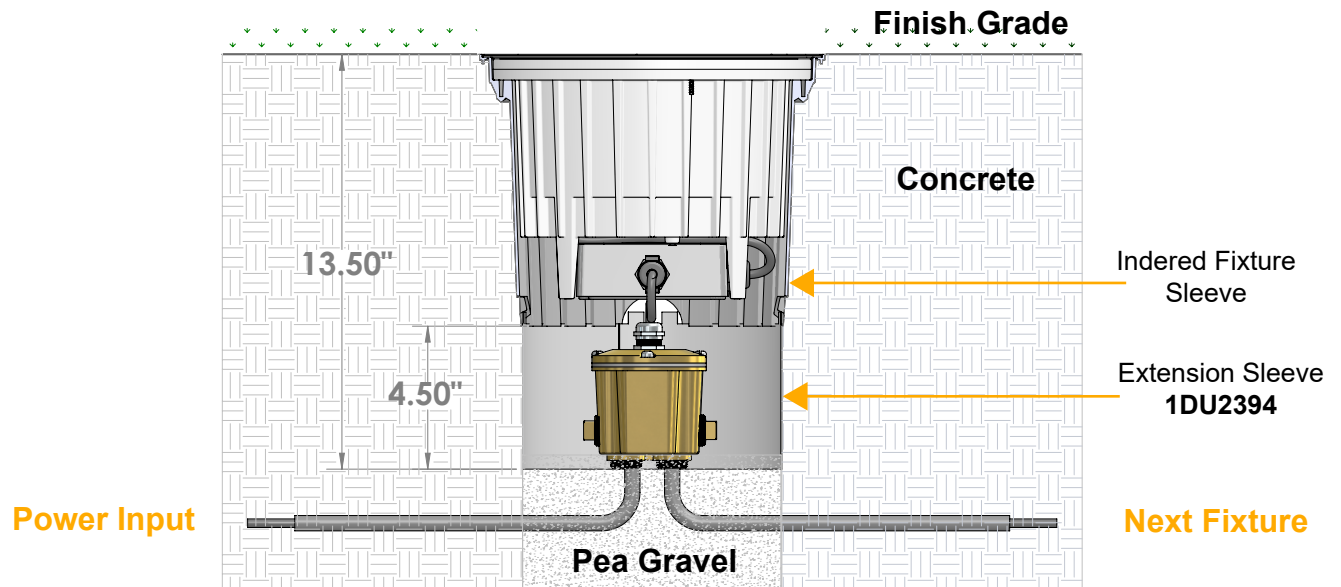
Do not use hand drill to screw each screw to tight one at a time This can chip glass or bunch gasket and prevent a proper seal



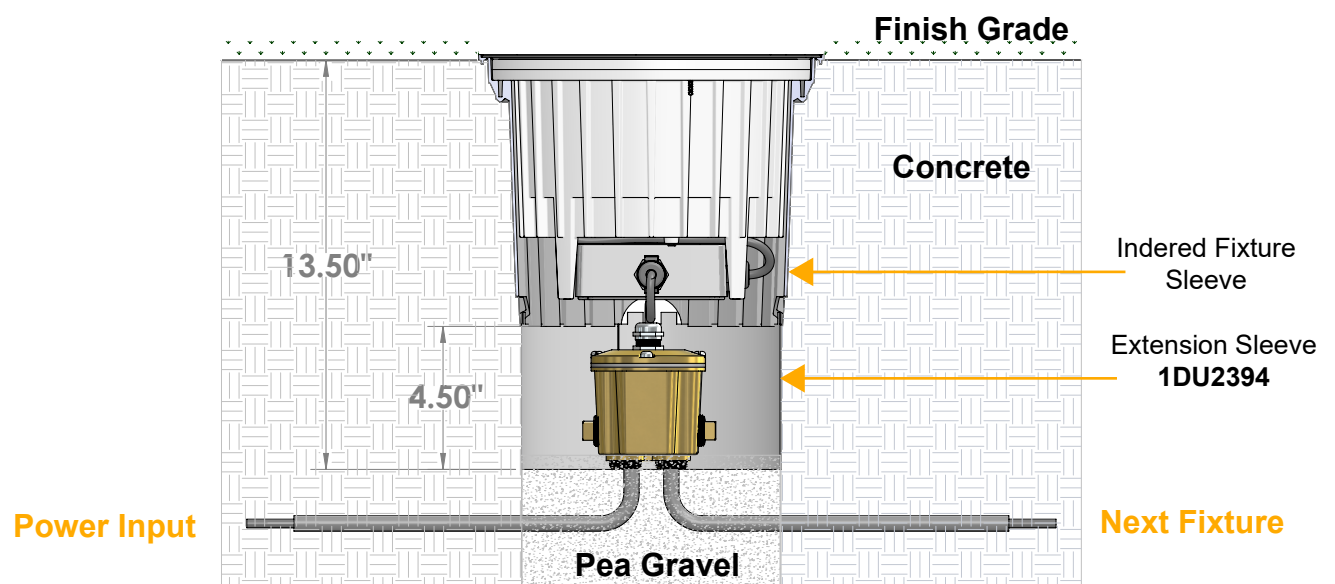
IN GRADE INSTALLATION ASSEMBLY
Recommended for Ground Level Installation
with Extension Sleeve 1DU2394



Flush Mount Sleeve Assembly



Semi-Flush Mount Sleeve Assembly

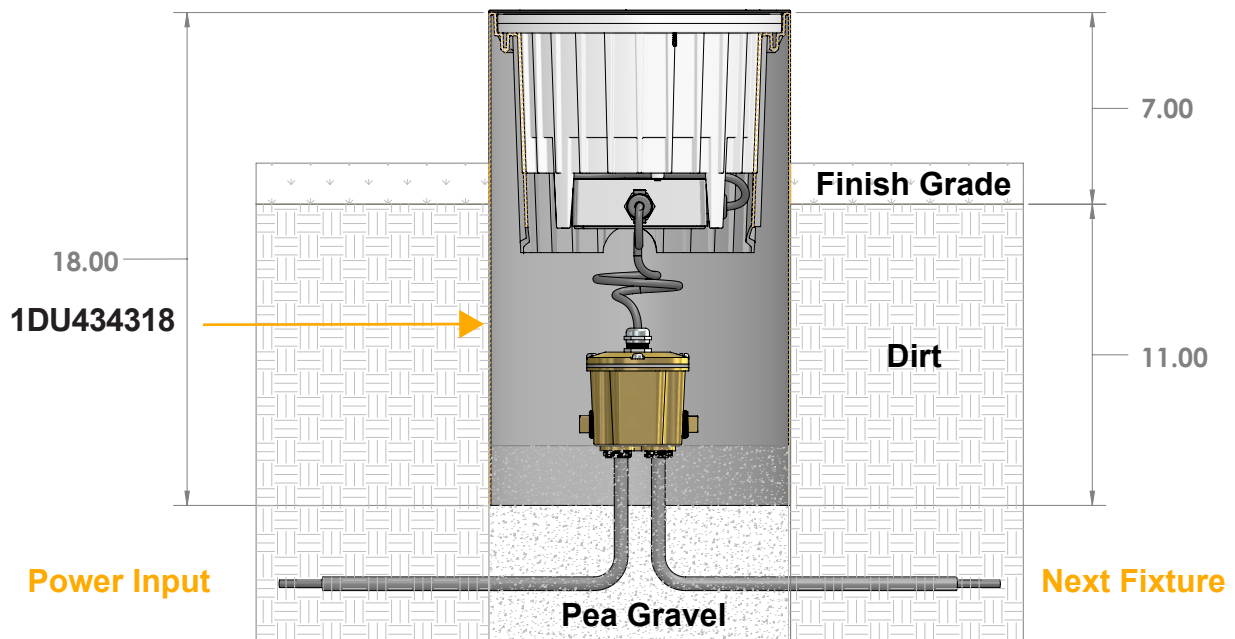
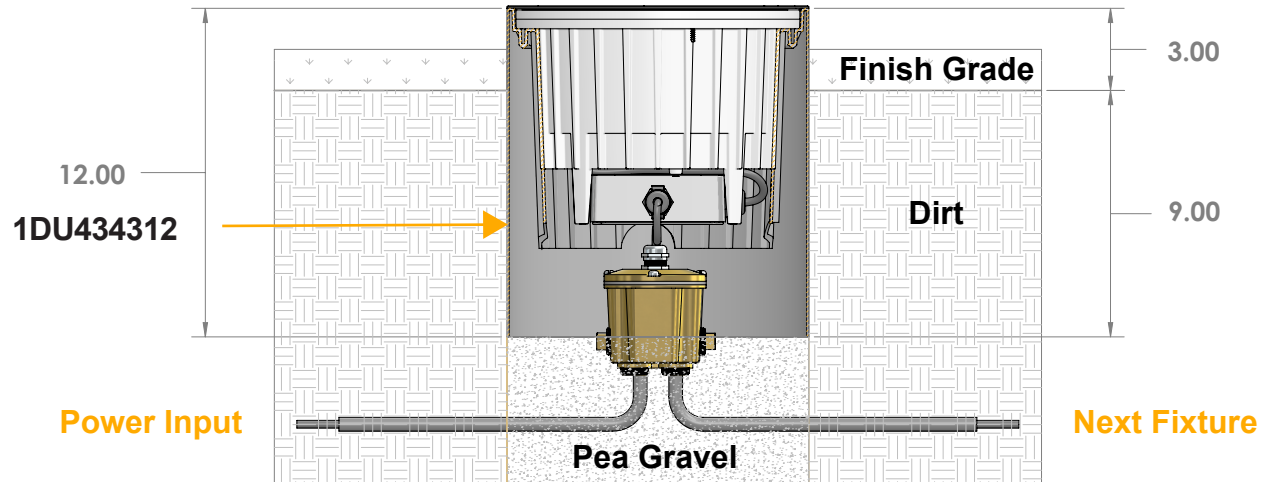


Finished Installation Examples

RAISED TUBE INSTALLATION ASSEMBLY

Recommended for Ground Level Installation

1DU4343 with Round Trim ONLY

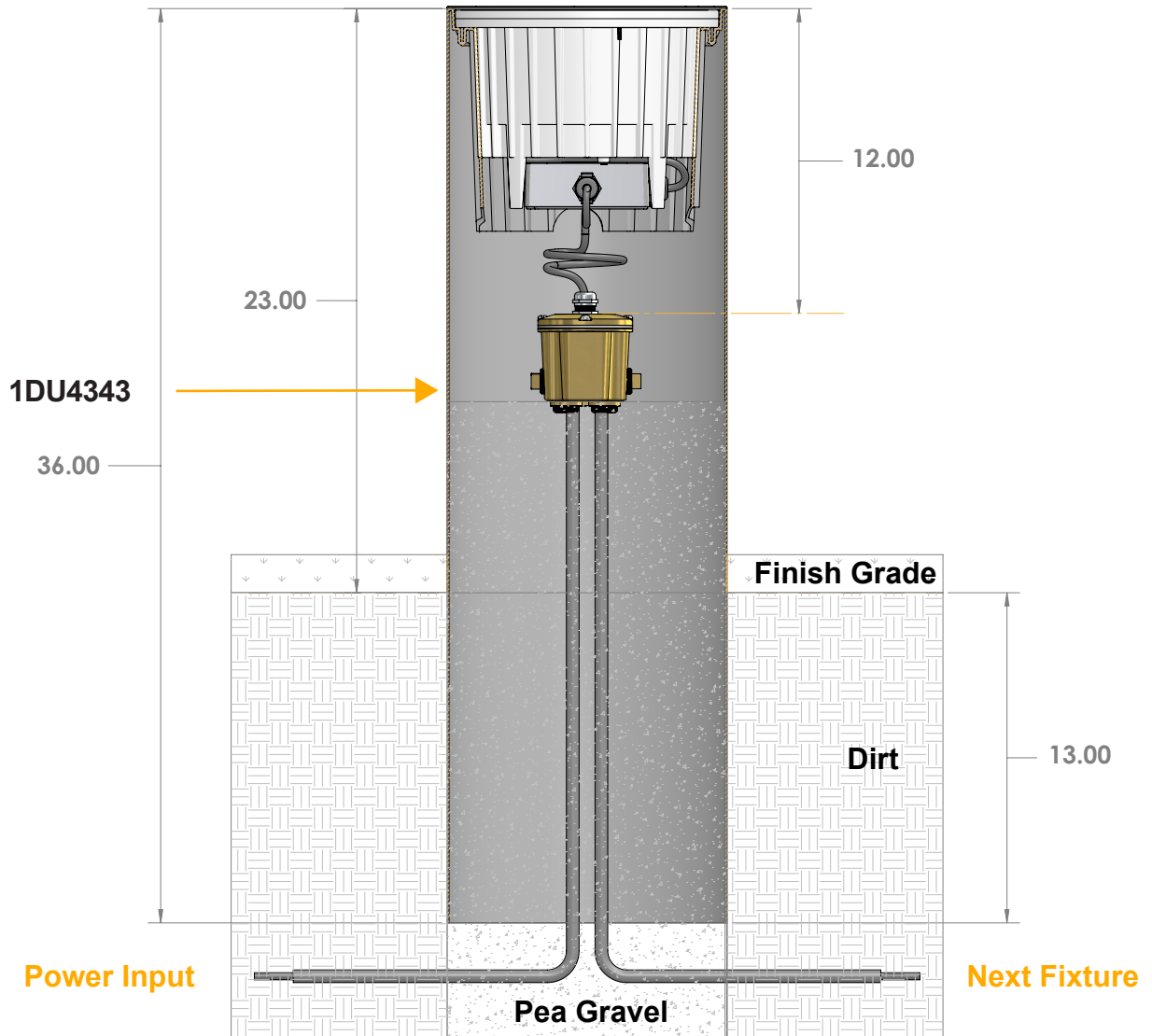


Finished Installation Examples

RAISED TUBE INSTALLATION ASSEMBLY

Recommended for Ground Level Installation

1DU4343 with Round Trim ONLY



Maintenance

This fixture was designed and manufactured for a durable, long lasting use with minimum care. To ensure the maximum lifespan of this product, we encourage our customer to provide a quality visual inspection of the fixture and installation accessories every six months. If there are any visible signs of issues (i.e moisture or dust) during the inspection, please clean any of the dust or moisture with a soft cloth and check to make sure that any of the fixtures are still operating normally. If there are any issues regarding the fixture please contact us as we will assist the situation at hand.

Support

Any questions, problems, or comments you have please feel free to contact our Customer Service department during our business hours Monday-Friday 8am-5pm via: Email: usaorders@targetti.com
Phone: (714) 513-1991

Visit our website: <http://www.targettiusa.com>