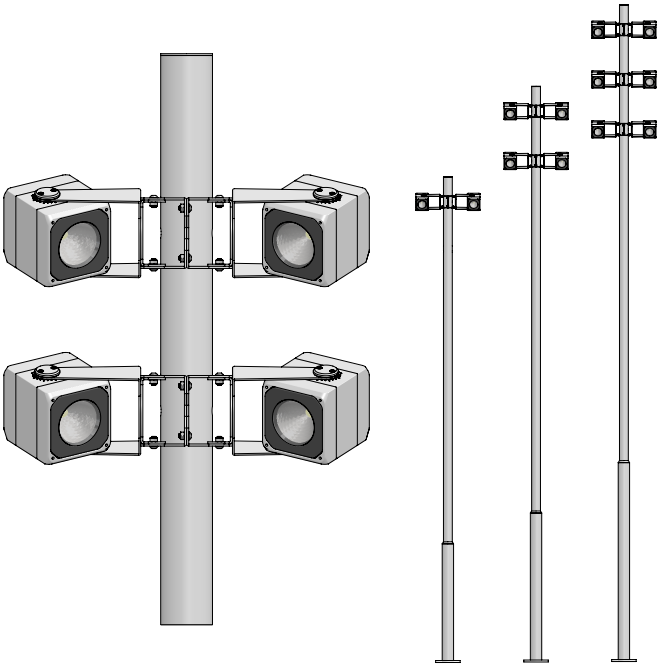




DART MEDIUM EVENT POLE  
DAM41FE-

MULTI-HEADED EVENT POLE WITH  
PROFESSIONAL ADJUSTABLE FLOODLIGHT  
PROJECTORS



If in doubt about the symbols please refer to catalog  
or website

WARNING

To ensure a maximum efficient use of  
the product, read the instructions  
before proceeding installment.



This fixture must be installed by a  
licensed and qualified electrician. The  
installer must comply with NEC and local  
building codes when installing the fixture.



Electrical current can cause painful shock,  
serious injury, or even death. Make sure  
you turn off the power supply, ground  
fixture(s), and make sure all electrical  
connections are correct and secured  
tightly.



For use in IP66 installations.

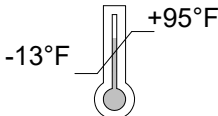


Keep the label of the original packaging if  
any eventual future claims are needed.

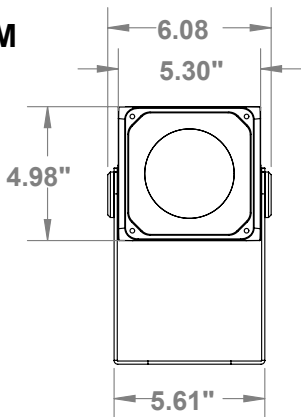


IK 10

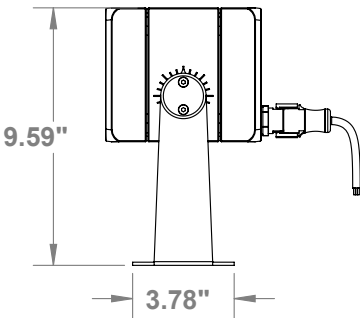
120-277 VAC



DART MEDIUM



BRACKET  
POSITION A



BRACKET  
POSITION B

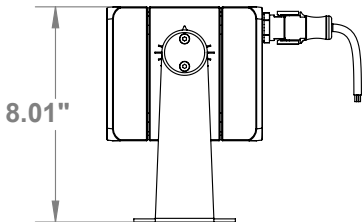


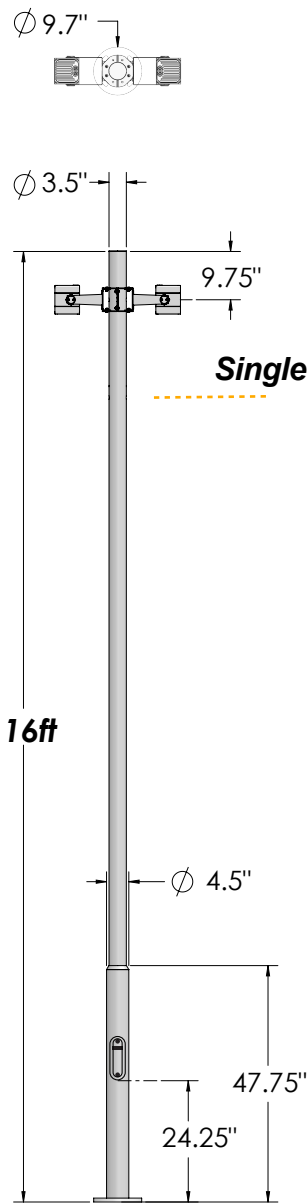
Table of Contents

Packaging Contents  
Pole Accessories / Installation  
Pole Diagram  
Optical Accessories / Installation  
Maintenance / Support

Pg.2/4  
Pg.5/12  
Pg.13/14  
Pg.15/18  
Pg.19

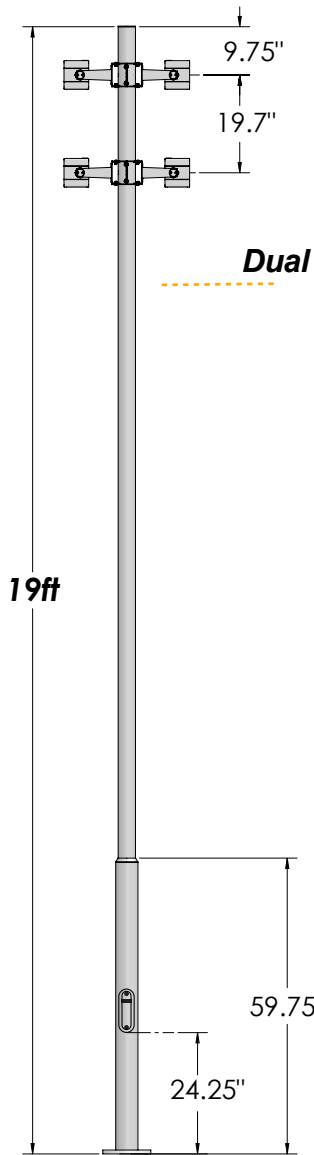
# Packaging Contents / Dimensions

## EVENT POLE (REQUIRED)



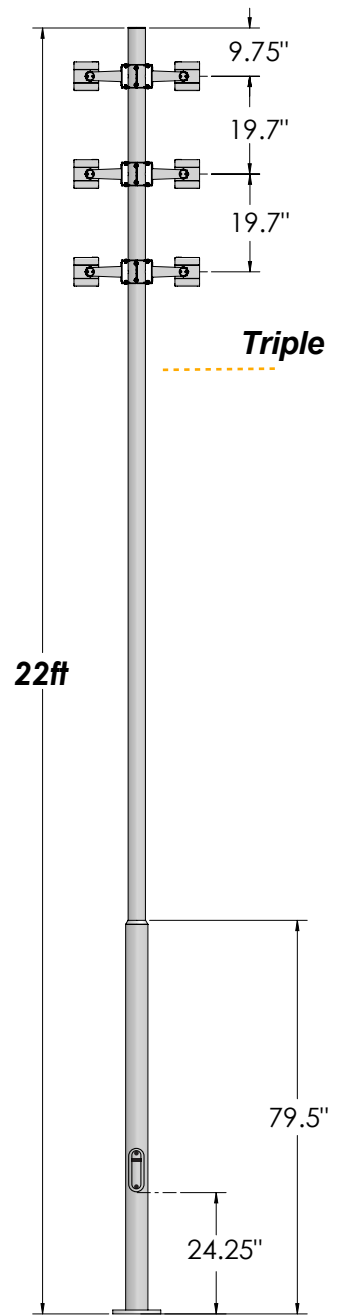
### 1USP01FE16S - SINGLE

**16ft round powder coated steel pole.** Hot-galvanized EN ISO 1461 with integral hatch door for utility power.  
**Maximum of 1 bracket (4 fixtures).**



### 1USP01FE19S - SINGLE 1USP01FE19D - DUAL

**19ft round powder coated steel pole.** Hot-galvanized EN ISO 1461 with integral hatch door for utility power.  
**Maximum of 2 brackets (8 fixtures).**



### 1USP01FE22S - SINGLE 1USP01FE22D - DUAL 1USP01FE22T - TRIPLE

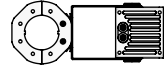
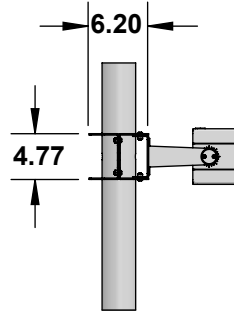
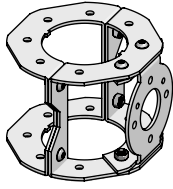
**22ft round powder coated steel pole.** Hot-galvanized EN ISO 1461 with integral hatch door for utility power.  
**Maximum of 3 brackets (12 fixtures).**

*Textured finish*

● Ferrite Dark Grey

## Packaging Contents / Dimensions Cont.

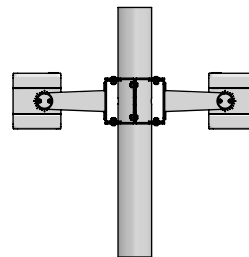
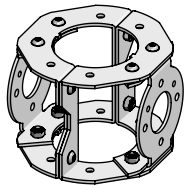
### MOUNTING BRACKET (REQUIRED)



Mounting bracket, 1 fixture

Finish ● Ferrite Dark Grey

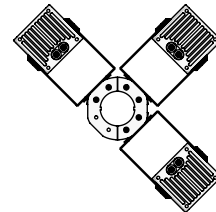
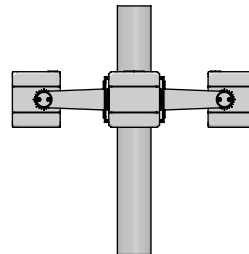
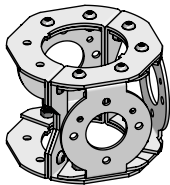
Part No. 1USP01BKTFES



Mounting bracket, 2 fixture

Finish ● Ferrite Dark Grey

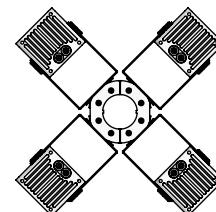
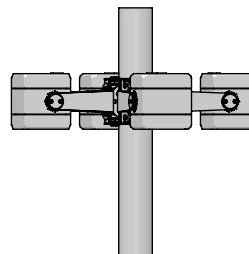
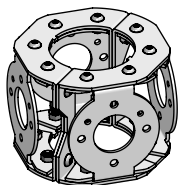
Part No. 1USP01BKTFED



Mounting bracket, 3 fixture

Finish ● Ferrite Dark Grey

Part No. 1USP01BKTFES



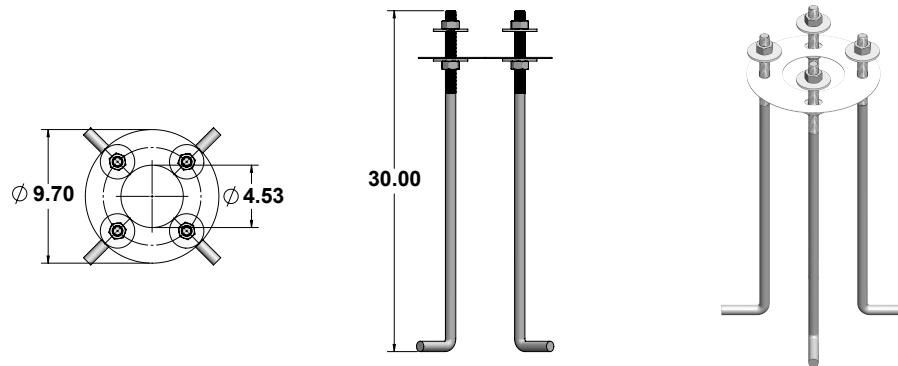
Mounting bracket, 4 fixture

Finish ● Ferrite Dark Grey

Part No. 1USP01BKTFEQ

## Packaging Contents / Dimensions Cont.

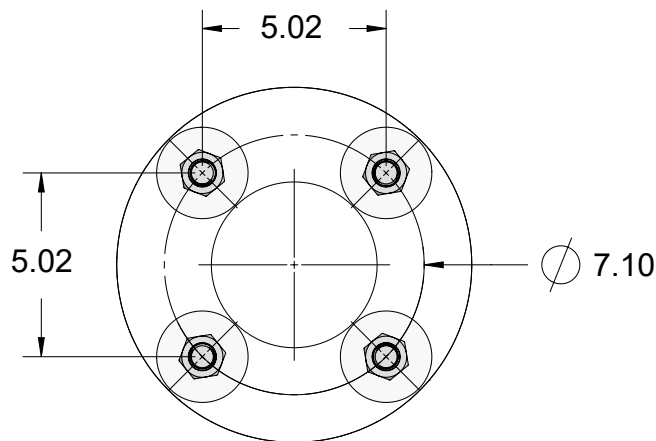
**MOUNTING (REQUIRED)**



**Part No. 1USE001-**

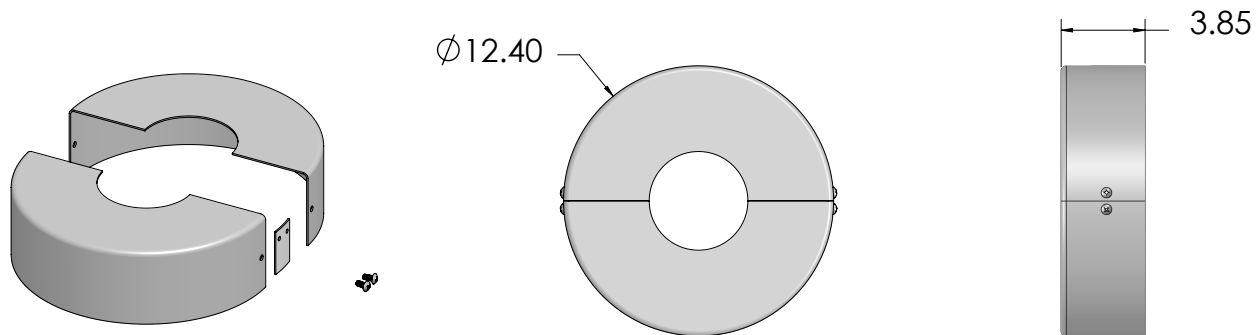
Pole anchor kit. 4ea 3/4"x 30" 'J' anchor bolts, 8ea hex nuts and washers, 1ea template. **(REQUIRED per pole)**

### Bolt Pattern Template





## Pole Accessories (Optional)



---

**Aluminum decorative pole base cover.**

*Part No.*    **1USP01CVR02FE**

---

---

**Iron decorative pole base cover. To be used in environments that may have impact.**

*Part No.*    **1USP02CVR01FE**

---

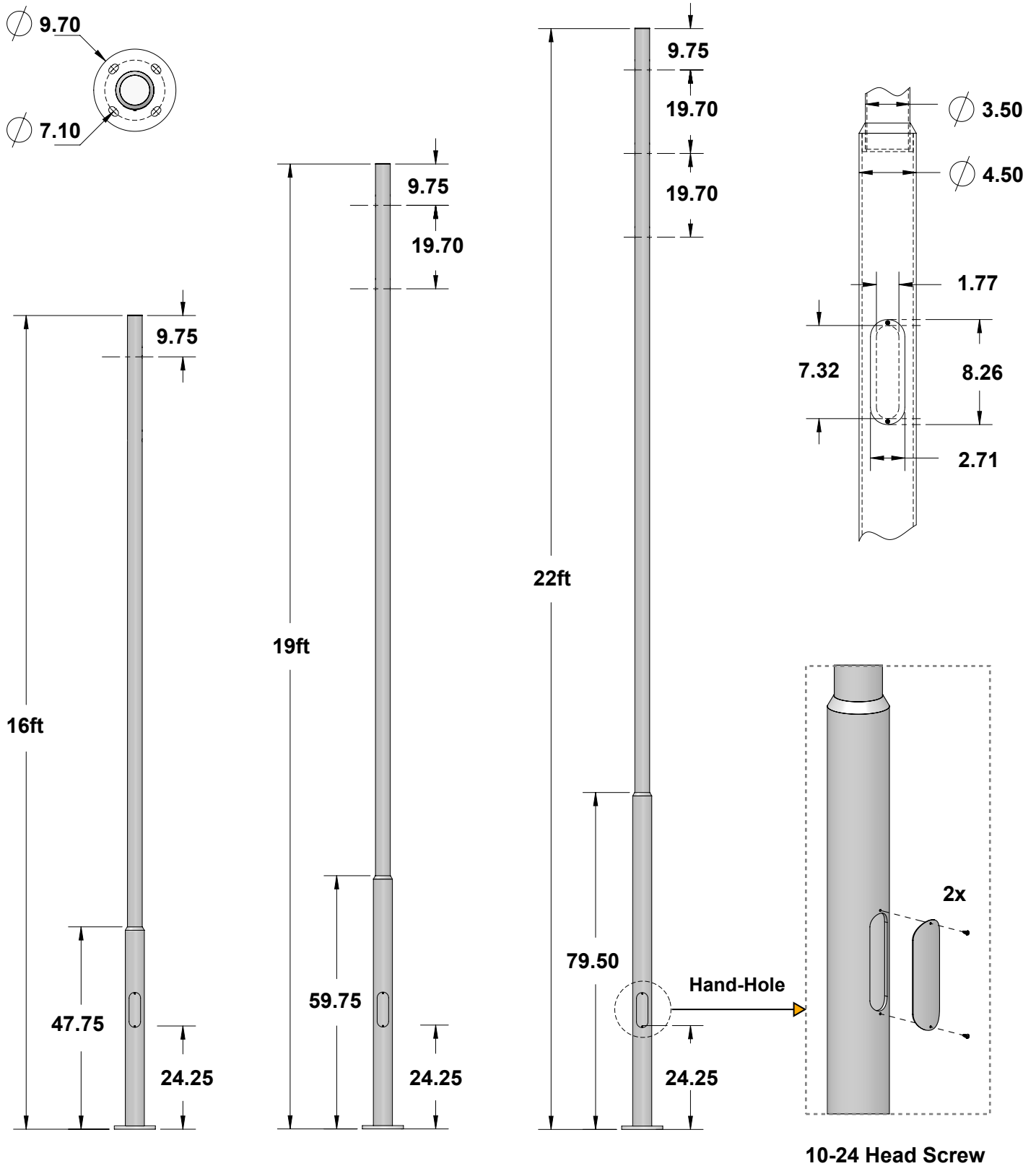
*Finish*    ● Ferrite Dark Grey

---

# Pole Accessories Installation

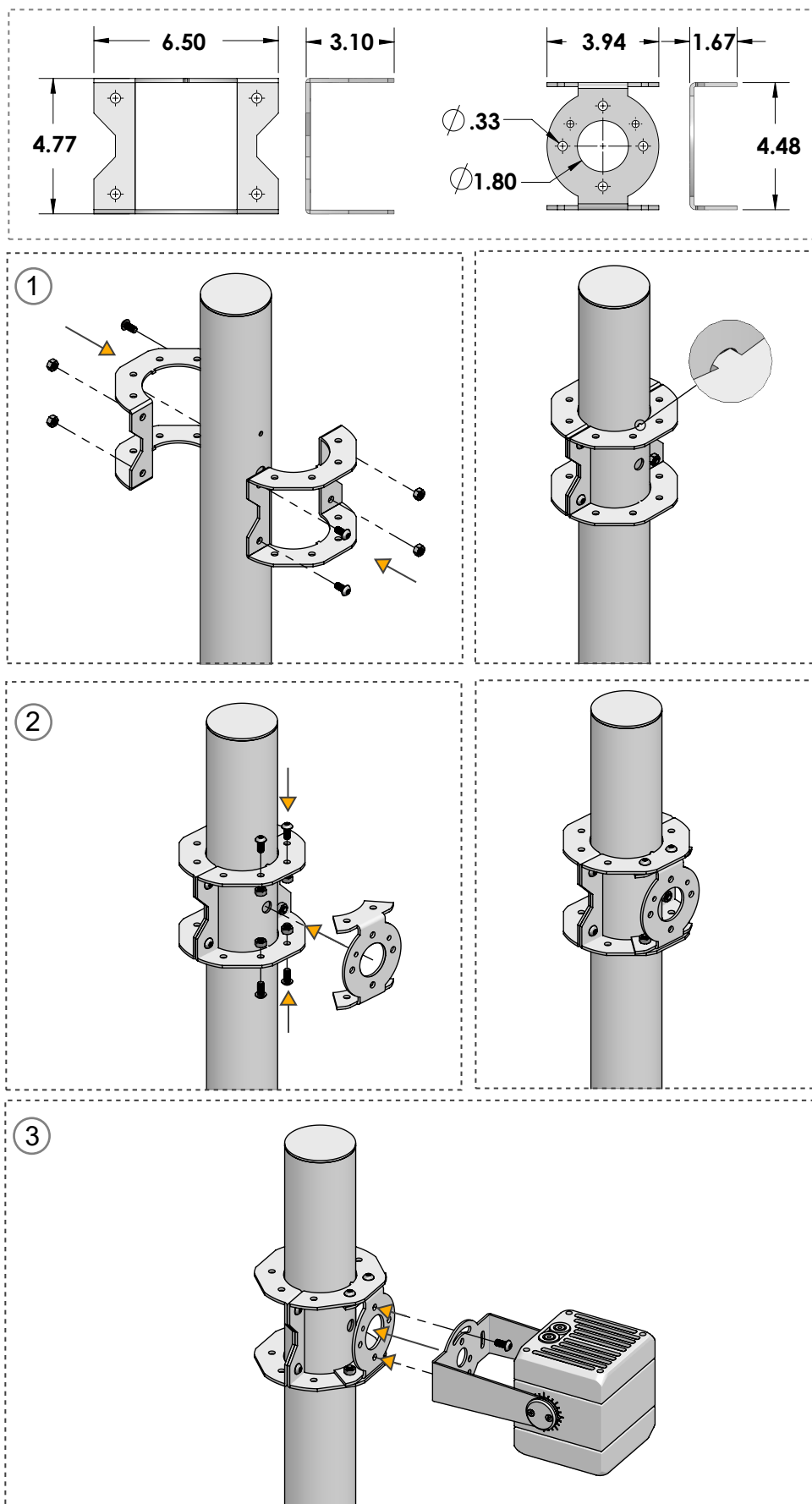
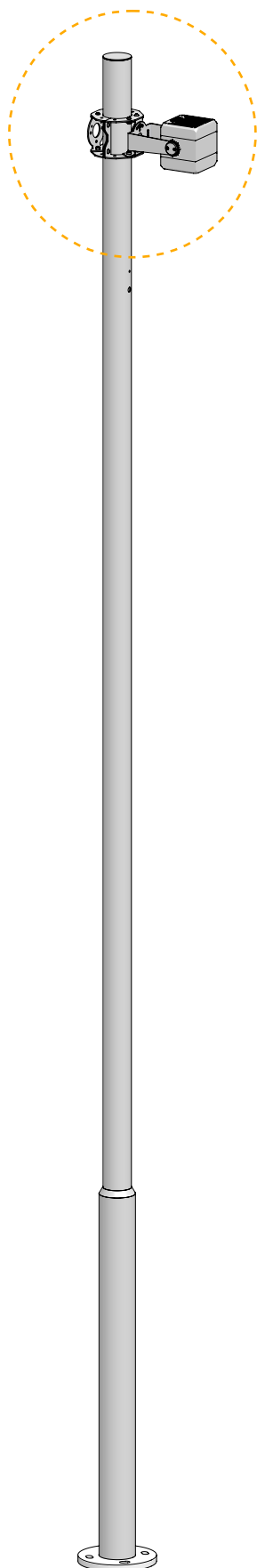
## Select height of pole

Dependant on fixture compatibility and configurations.



# Pole Accessories Installation Cont.

## MOUNTING SINGLE BRACKET



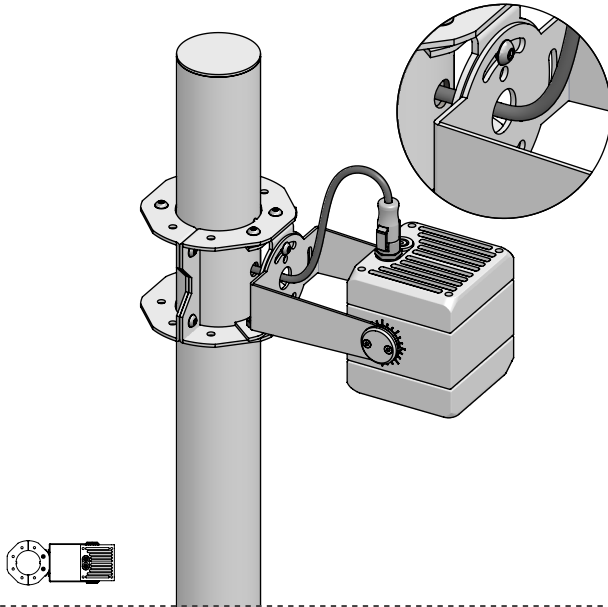
## Pole Accessories Installation Cont.

Select number of fixtures on each bracket, relative to each level desired.

*Dependant on fixture compatibility and configurations.*

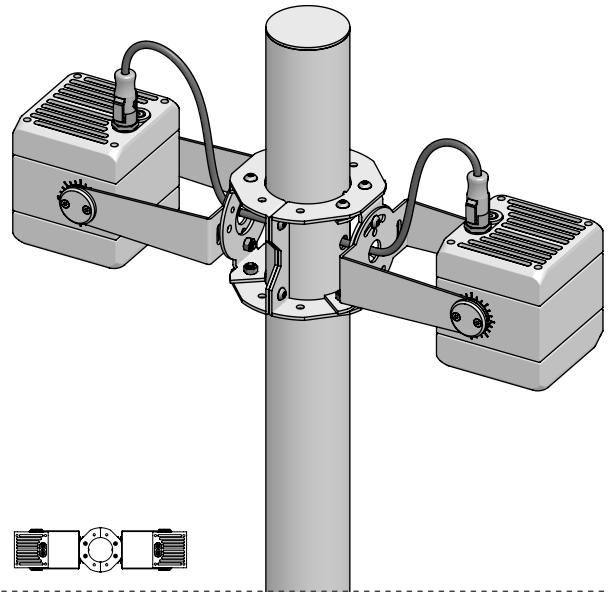
### 1USP01BKTFES

**Mounting Bracket, 1 Fixture**



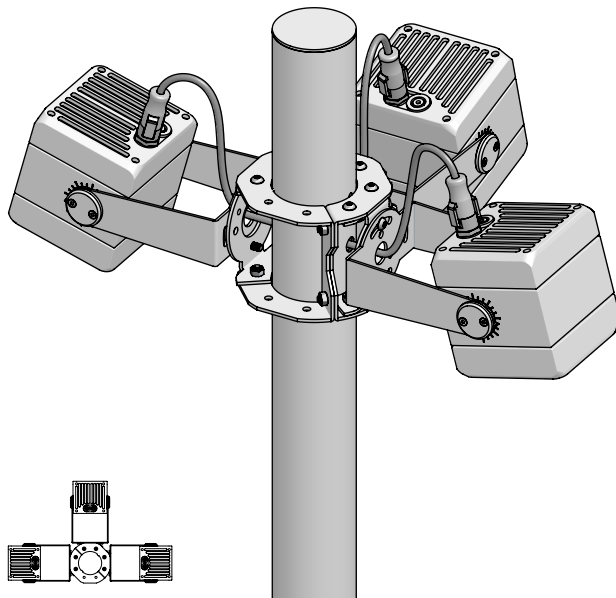
### 1USP01BKTFED

**Mounting Bracket, 2 Fixtures**



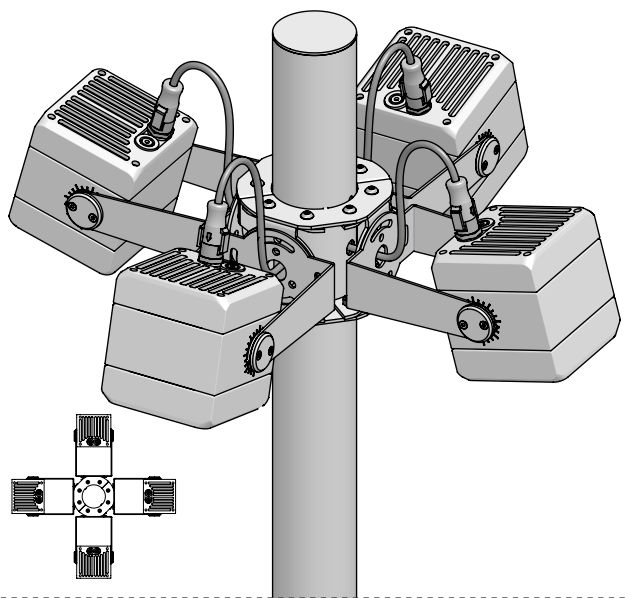
### 1USP01BKTFET

**Mounting Bracket, 3 Fixtures**



### 1USP01BKTFEQ

**Mounting Bracket, 4 Fixtures**



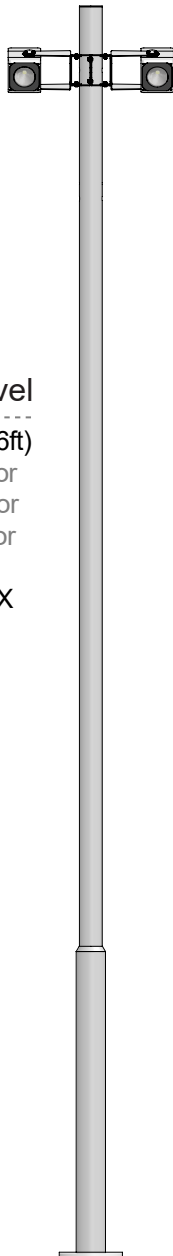
## Pole Accessories Installation Cont.

### Select number of configuration levels

*Dependant on fixture compatibility and configurations.*

#### Single Level

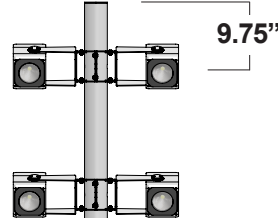
1USP01FE16S (16ft)  
1USP01BKTFES or  
1USP01BKTFED or  
1USP01BKTFET or  
1USP01BKTFEQ  
4 FEATURES MAX



#### Dual Level

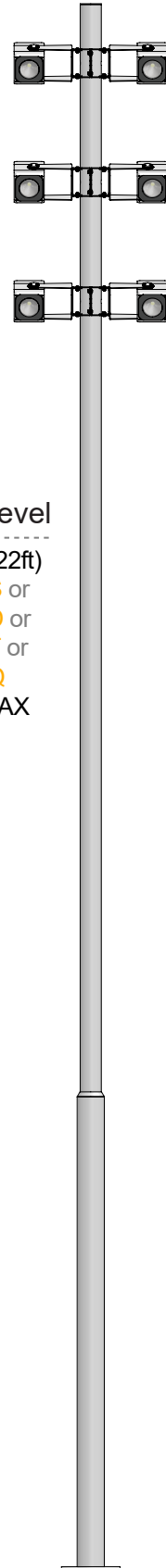
1USP01FE19D (19ft)  
1USP01BKTFES or  
1USP01BKTFED or  
1USP01BKTFET or  
1USP01BKTFEQ  
8 FIXTURES MAX

19.7" between  
center of bracket



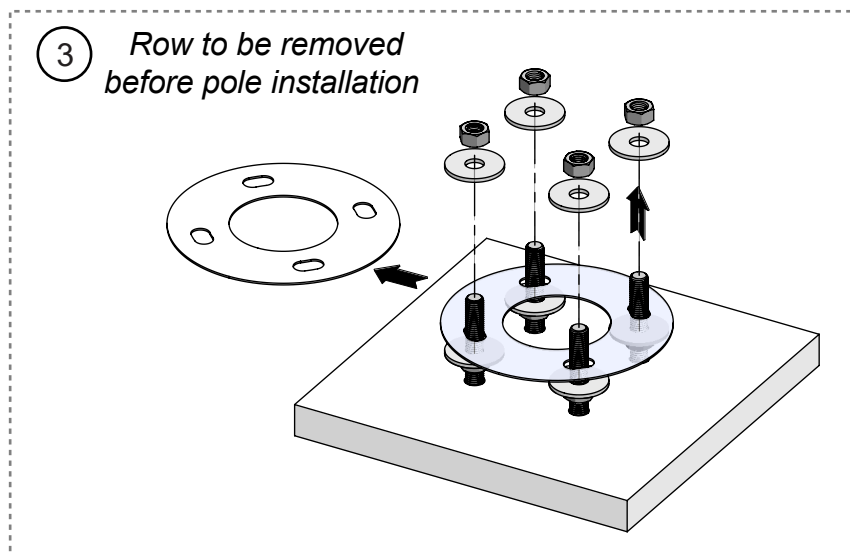
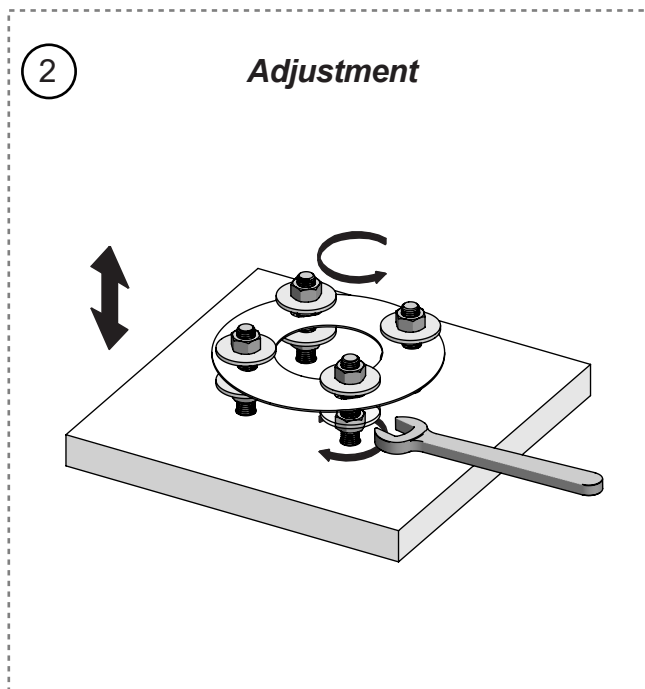
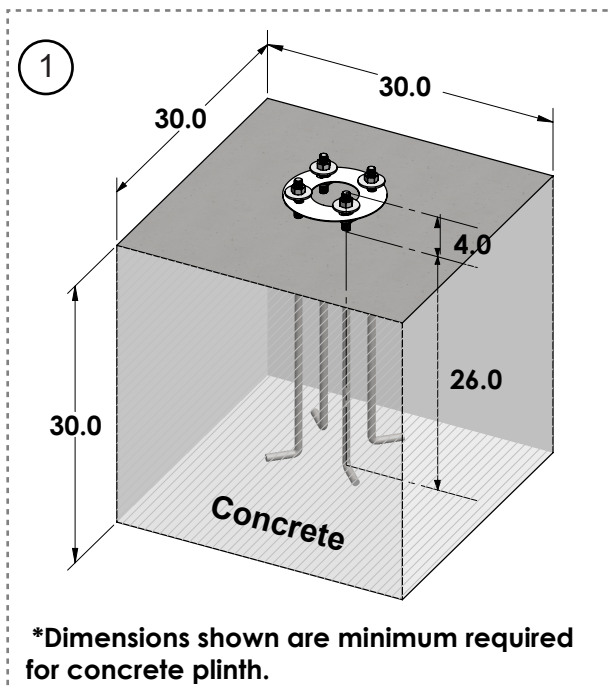
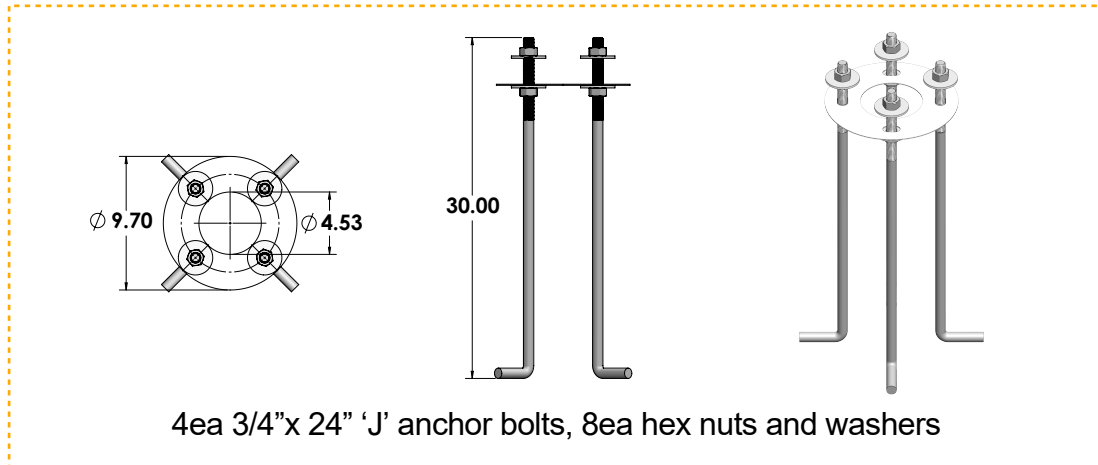
#### Triple Level

1USP01FE22T (22ft)  
1USP01BKTFES or  
1USP01BKTFED or  
1USP01BKTFET or  
1USP01BKTFEQ  
12 FIXTURES MAX



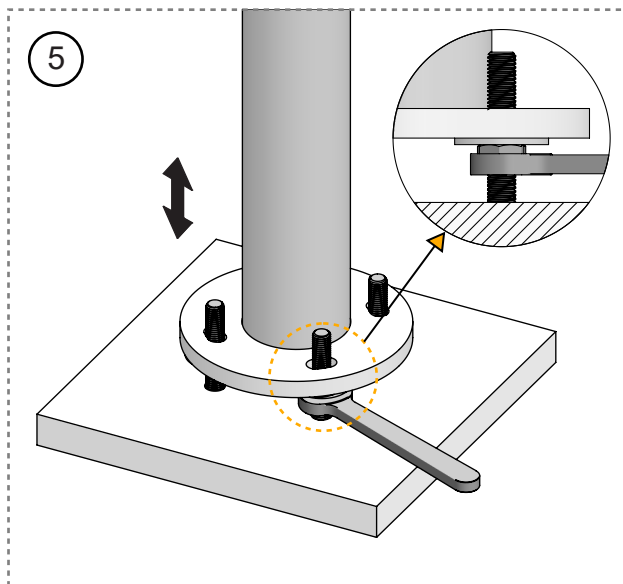
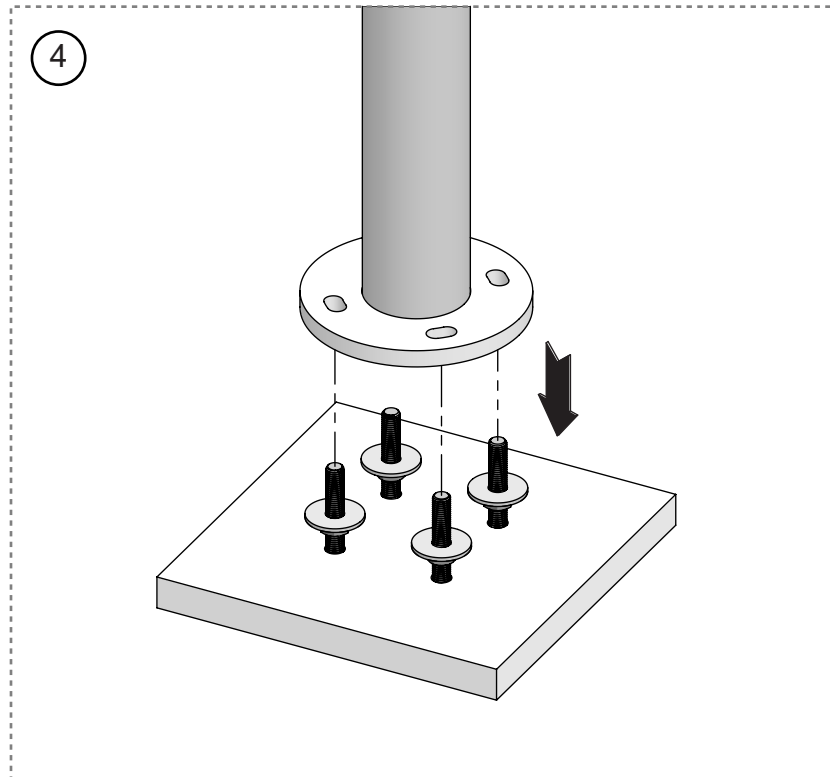
# Pole Accessories Installation Cont.

1USE001-

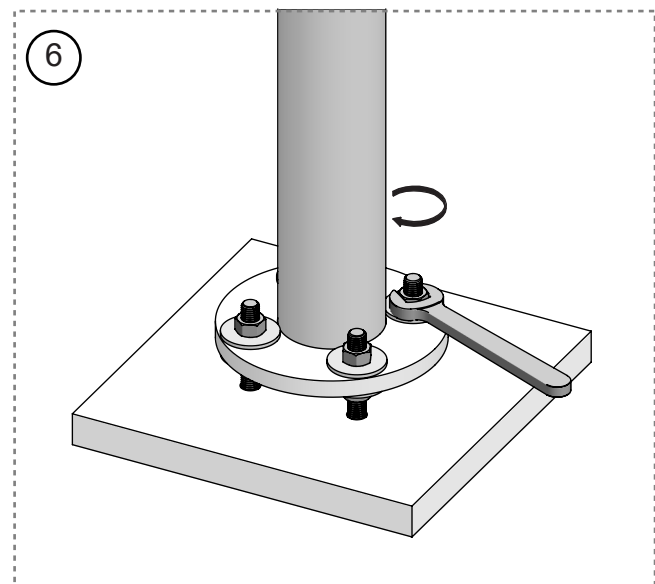


# Pole Accessories Installation Cont.

1USE001-



**Level**

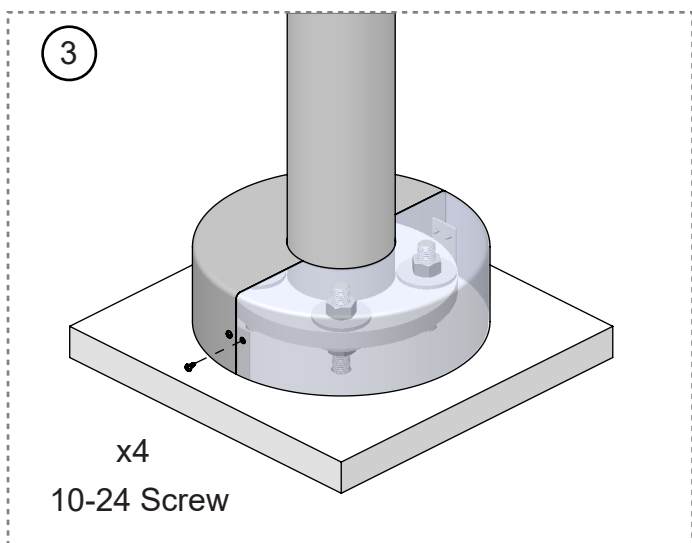
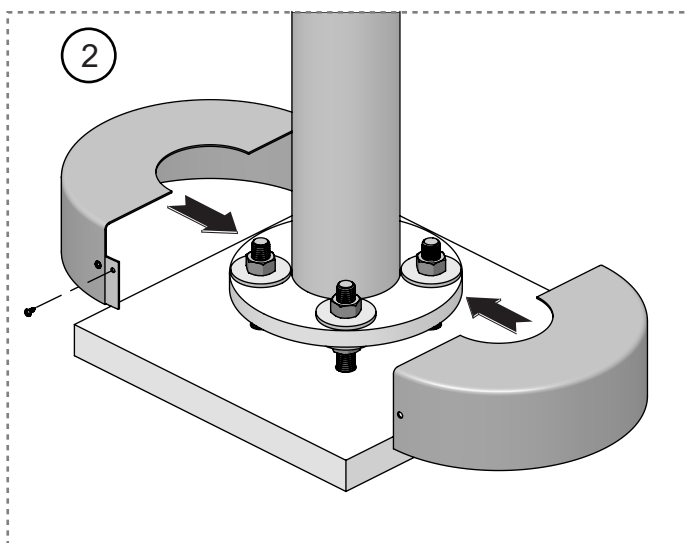
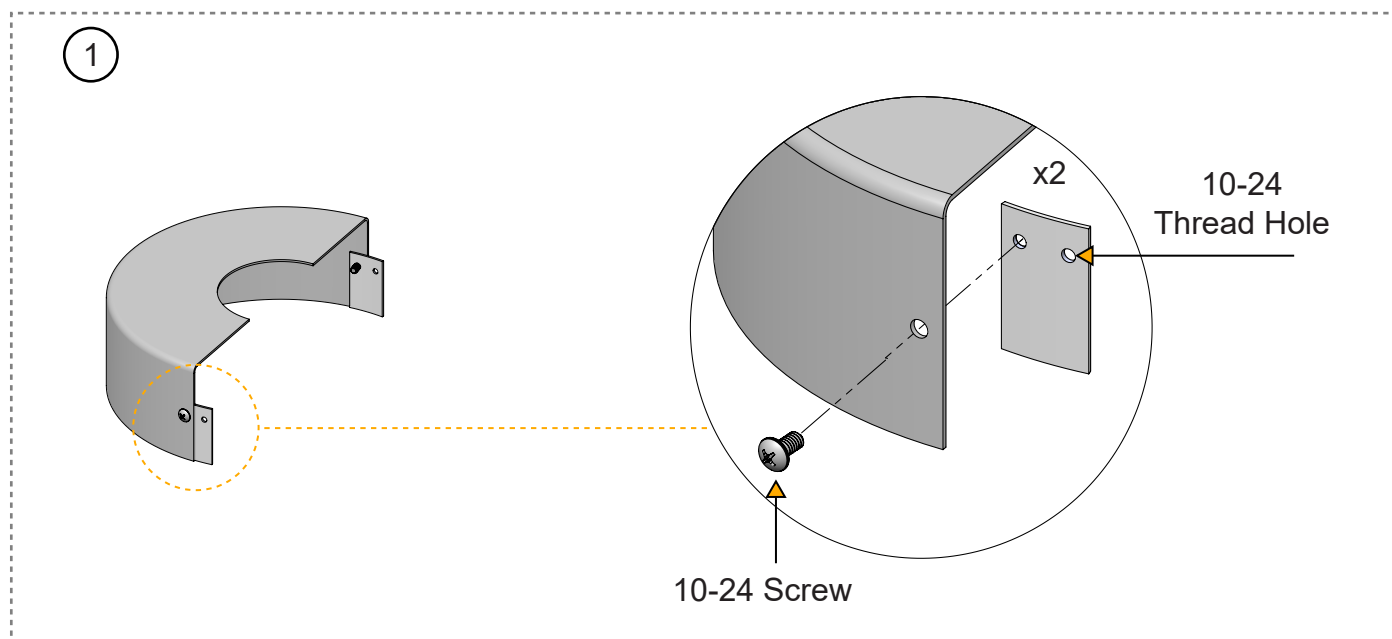
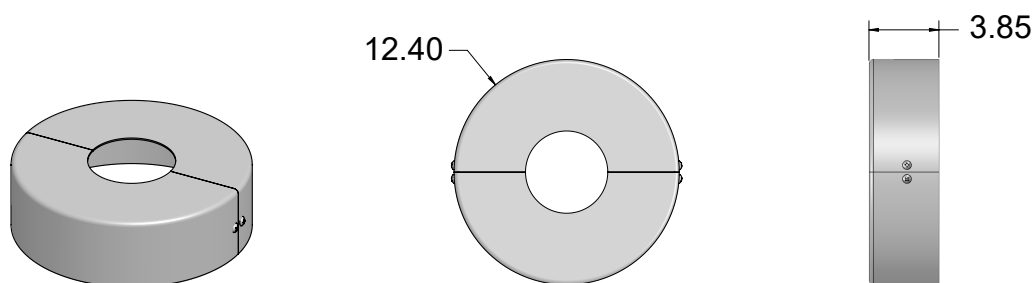


**Lock**

# Cover Accessory Installation

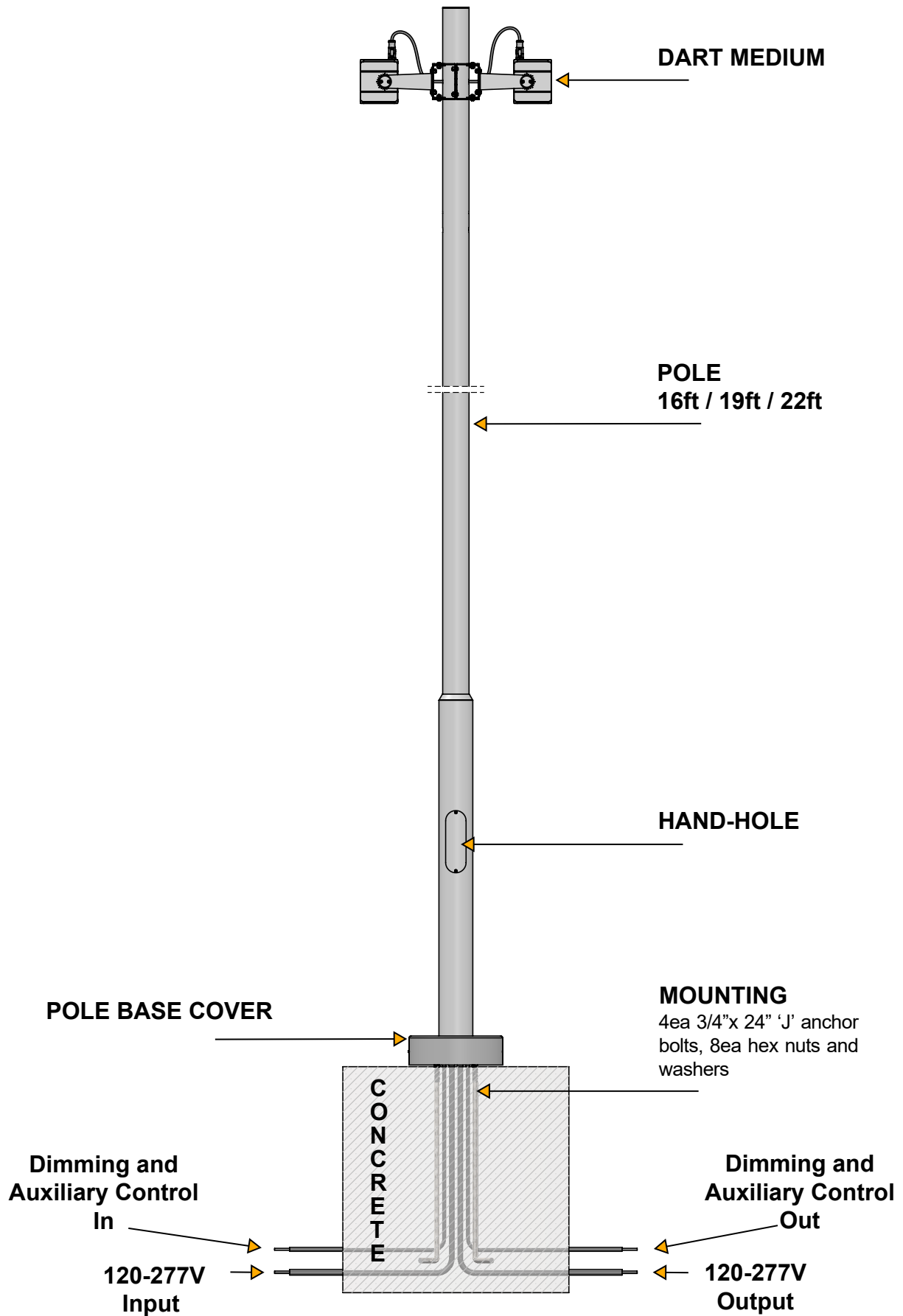
1USP01CVR02FE

1USP02CVR02FE

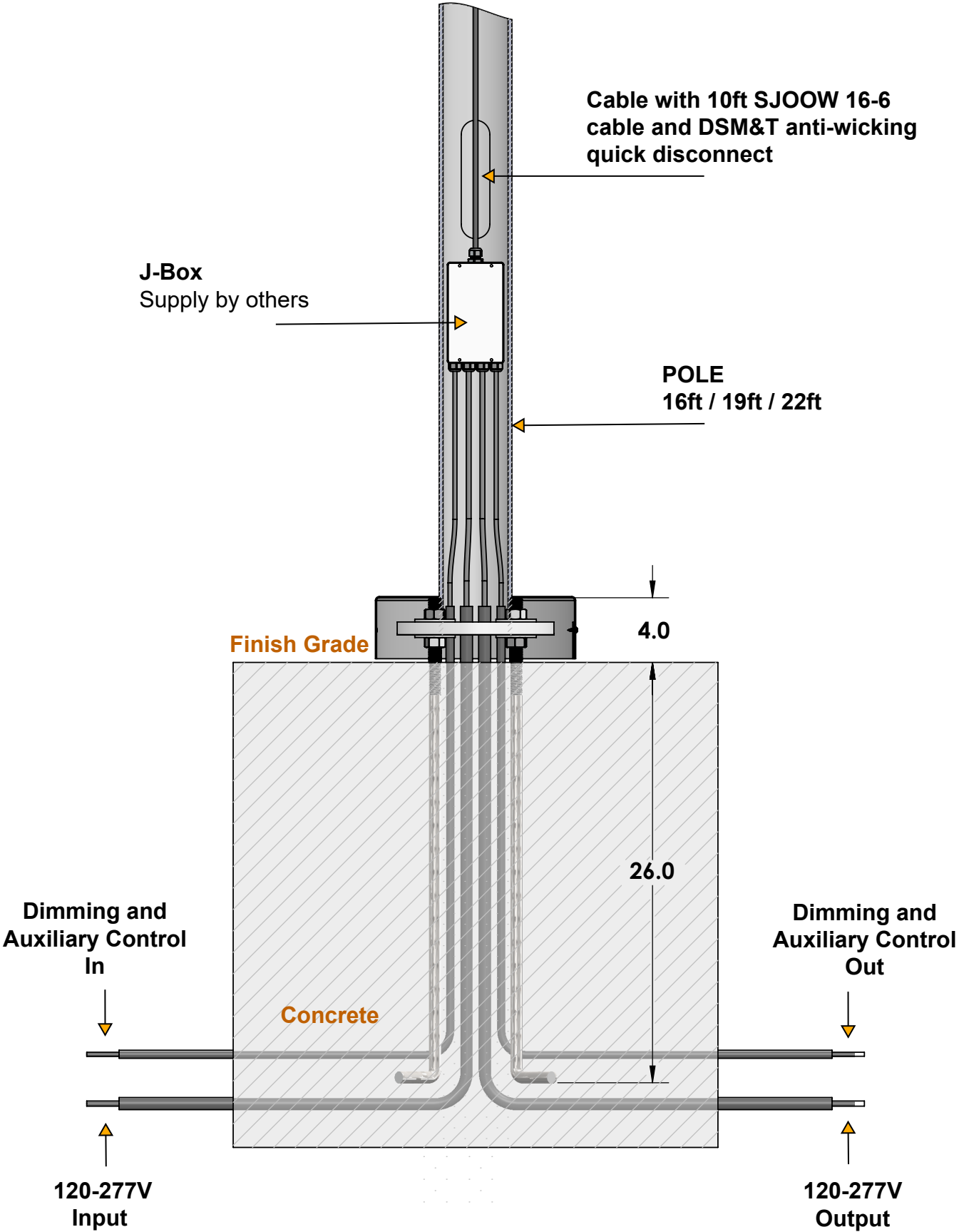




# Pole Diagram

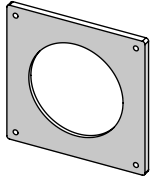


Pole Diagram Detail



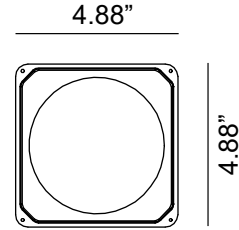
# Optical Accessories (Optional)

MAXIMUM OF TWO ACCESSORIES PER FIXTURE.

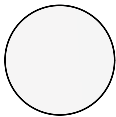


**Holder ring.** CNC machined anodized and powder coated aluminum. Dimension 4.75in x 4.75in. **Required for use of all filters. Not required for use with 1E3024 or 1E3025.**

Part No. **1E3022** (\*)

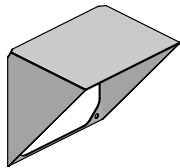
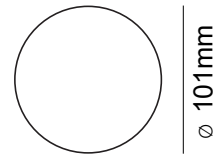


● Ferrite Dark Grey (Default) ● Heritage Brown (HB)\* ● Bronze (BZ)\* ● White (WT)\* ● Black (BT)\* ● Sandstone Grey (SG)\*



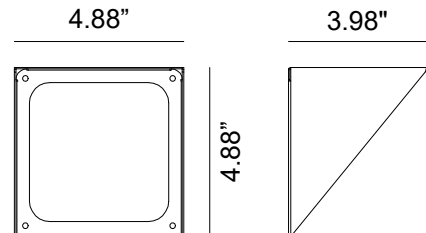
**'Blade of Light' linear spread lens.** PMMA holographic filter. **Not suitable for use with NSP and AYSM optics. To be completed with 1E3022 dedicated holder ring. Does not apply toward maximum accessory count.**

Part No. **1E3023**

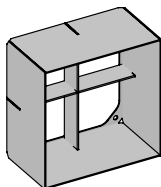


**Asymmetric screen.** Powder coated stainless steel. **Not compatible with 1E3025.**

Part No. **1E3024** (\*)

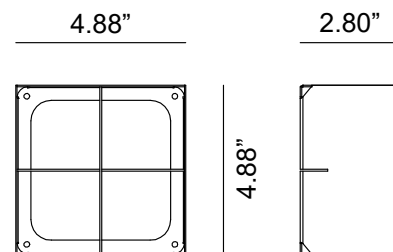


● Ferrite Dark Grey (Default) ● Heritage Brown (HB)\* ● Bronze (BZ)\* ● White (WT)\* ● Black (BT)\* ● Sandstone Grey (SG)\*



**Anti glare louver** with removable baffles in deep black finish for different levels of glare control. **Extrusion powder coat stainless steel. Cutoff 43.4°. Not compatible with 1E3024.**

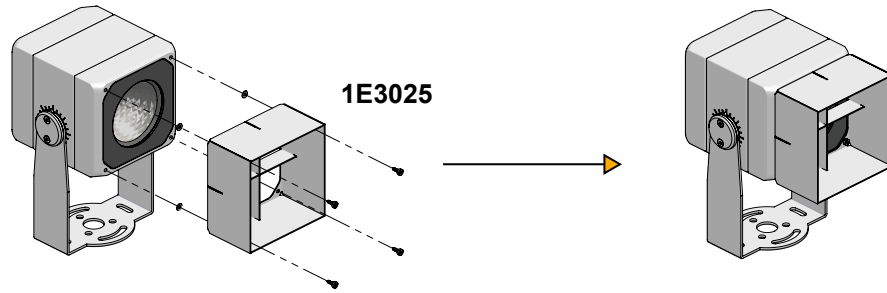
Part No. **1E3025** (\*)



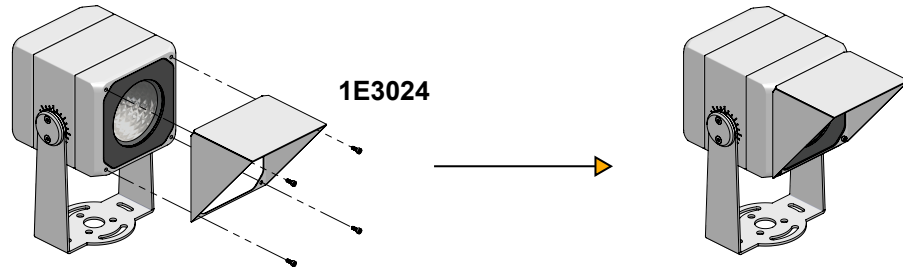
● Ferrite Dark Grey (Default) ● Heritage Brown (HB)\* ● Bronze (BZ)\* ● White (WT)\* ● Black (BT)\* ● Sandstone Grey (SG)\* 2024-04 Pg.15

# Optical Accessories Installation Options

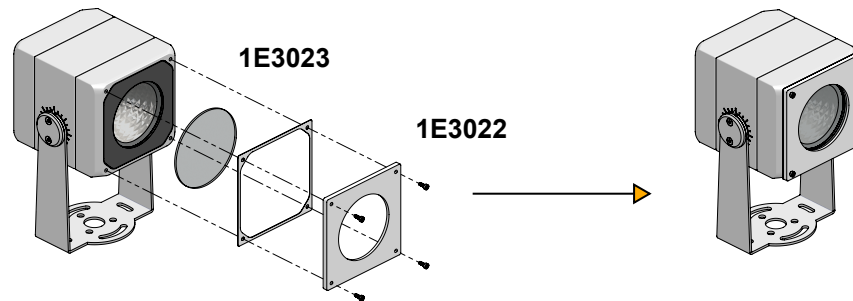
## HONEYCOMB ANTI-GLARE LOUVRE



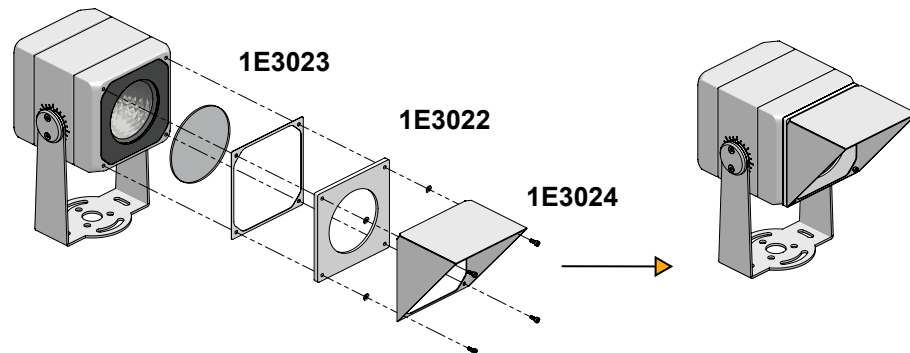
## ASYMMETRIC SCREEN



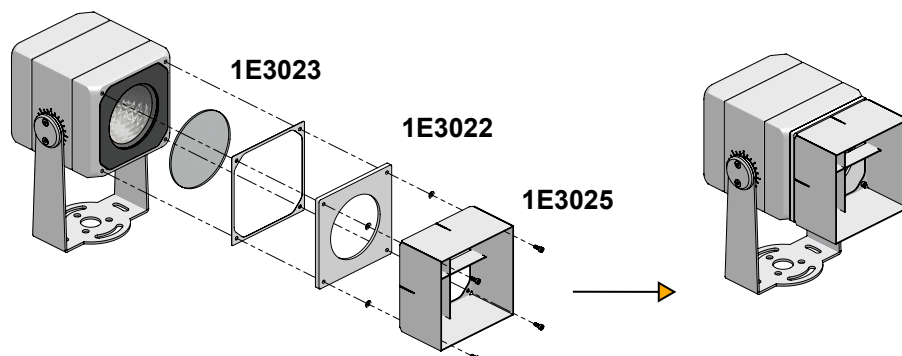
## FILTER HOLDER RING



## FILTER HOLDER RING AND ASYMMETRIC SNOOT.



## FILTER HOLDER RING AND HONEYCOMB ANTI-GLARE LOUVRE



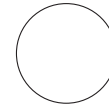
## Optical Accessories (Optional)

MAXIMUM OF TWO ACCESSORIES PER FIXTURE.

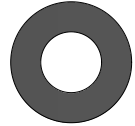


Water jet cut stainless steel **round pinhole LUMISHAPE light shield. Performs best with SP optic.**

Part No. **LS11001**

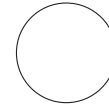


Ø 110mm

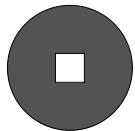


Water jet cut stainless steel **round circular LUMISHAPE light shield. Performs best with SP or FL optic.**

Part No. **LS11002**

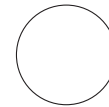


Ø 110mm

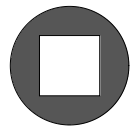


Water jet cut stainless steel **square pinhole LUMISHAPE light shield. Performs best with SP optic.**

Part No. **LS11003**

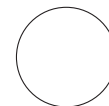


Ø 110mm

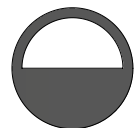


Water jet cut stainless steel **regular square LUMISHAPE light shield. Performs best with SP or FL optic.**

Part No. **LS11004**

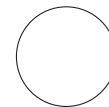


Ø 110mm

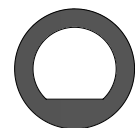


Water jet cut stainless steel **half LUMISHAPE light shield. Stackable up to 4pcs per fixture; 4pcs accounts to 1 accessory toward maximum accessory count. Performs best with FL or MWFL optic.**

Part No. **LS11005**

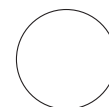


Ø 110mm



Water jet cut stainless steel **quarter LUMISHAPE light shield. Stackable up to 4pcs per fixture; 4pcs accounts to 1 accessory toward maximum accessory count. Performs best with FL or MWFL optic.**

Part No. **LS11006**



Ø 110mm

**Finish** ● **Ferrite Dark Grey (Default)**

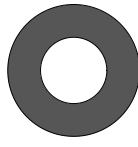
# Lumishape Accessories Options

## With Lumishape

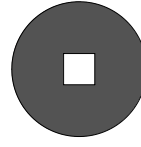
**LS11001**  
Round Pinhole



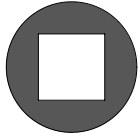
**LS11002**  
Circular Lumishape



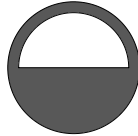
**LS11003**  
Square Pinhole



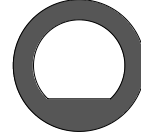
**LS11004**  
Square Lumishape



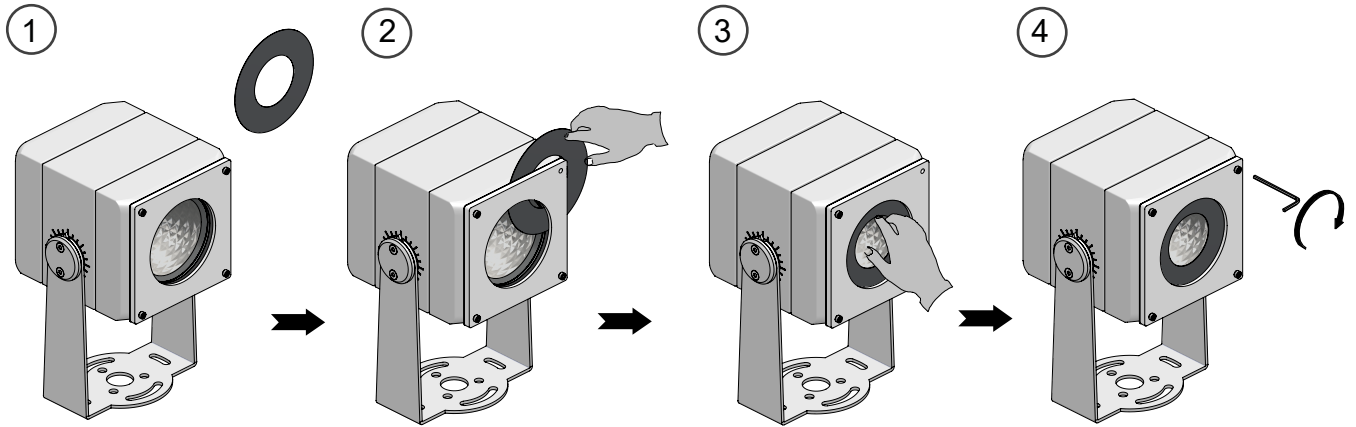
**LS11005**  
Half Lumishape



**LS11006**  
Quarter Lumishape



**LUMISHAPE**

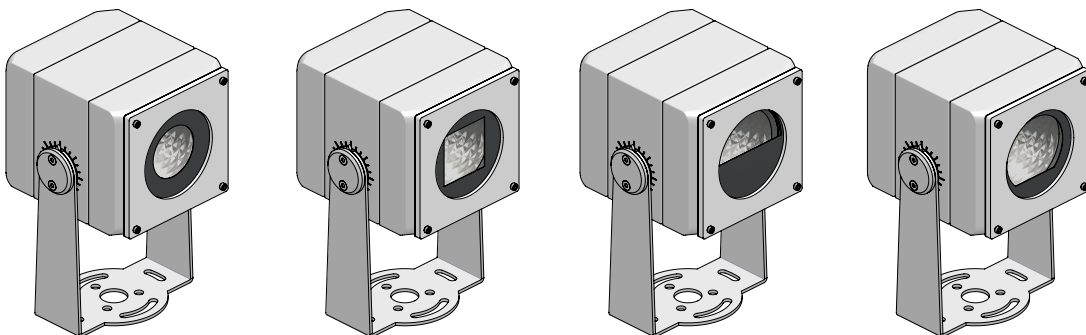


Install Lumishape to between Holder Ring and body of fixture. Sliding under foam gasket.

Adjust Lumishape to center of the Holder Ring and rotate to desired position.

Be sure to tighten the four screws.

## Example Installation



---

## Maintenance

This fixture was designed and manufactured for a durable, long lasting use with minimum care. To ensure the maximum lifespan of this product, we encourage our customers to provide a quality visual inspection of the fixture and installation accessories every six months. If there are any visible signs of issues (i.e moisture or dust) during the inspection, please clean any of the dust or moisture with a soft cloth and check to make sure that all fixtures are still operating normally. If there are any issues regarding the fixture please contact us as we will assist the situation at hand.

---

## Support

Any questions, problems, or comments you have please feel free to contact our Customer Service department during our business hours Monday-Friday 8am-5pm via: Email: [usaorders@targetti.com](mailto:usaorders@targetti.com)

Phone:  
(714) 513-1991

Visit our website: <http://www.targettiusa.com>