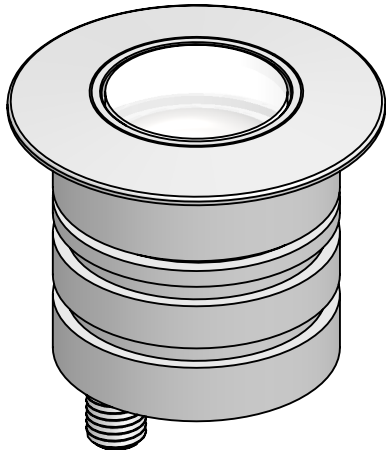




## JUPITER MINI JMR-

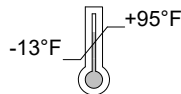
## PROFESSIONAL COMPACT INGROUND LED FIXTURE



IP68<sup>B</sup>  
IP69K

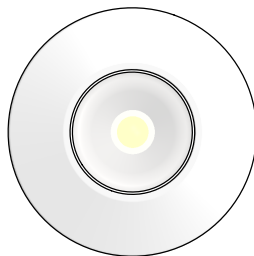


**IK 10**  
24V DC



If in doubt about the symbols please refer to catalog or website

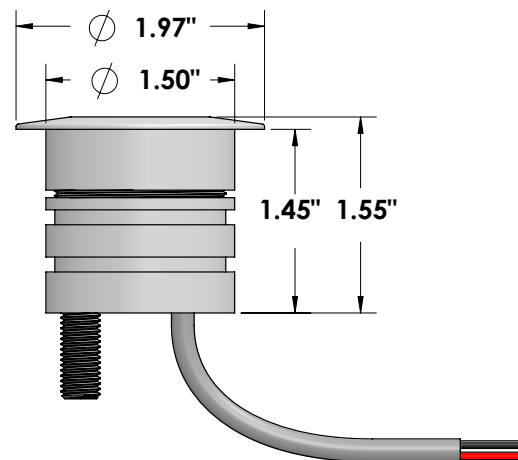
### JUPITER MINI JMR-



**WARNING**

**To ensure a maximum efficient use of the product, read the instructions before proceeding installment.**

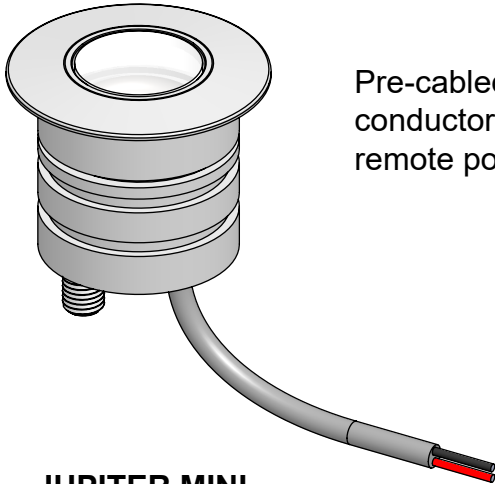
- This fixture must be installed by a licensed and qualified electrician. The installer must comply with NEC and local building codes when installing the fixture.
- Electrical current can cause painful shock, serious injury, or even death. Make sure you turn off the power supply, ground fixture(s), and make sure all electrical connections are correct and secured tightly.
- For use in IP67 installations.
- Keep the label of the original packaging if any eventual future claims are needed.



## Table of Contents

Packaging Contents	Pg.2
Sleeve Installation (Required)	Pg.3
Installation Accessories (Optional)	Pg.4
Fixture Installation Instructions	Pg.5/8
Power Supply (Required)/Fixture Wiring Layout	Pg.9/10
Maintenance / Support	Pg.11

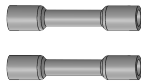
# Packaging Contents



Pre-cabled with 2ft direct burial 18ga 2 conductor cable for connection to remote power supply.

## JUPITER MINI

- Finish
- Brushed Natural
  - Bronze PVD\*
  - Black PVD\*



Heat-shrink Solder Seal  
Waterproof connectors  
2 ea.



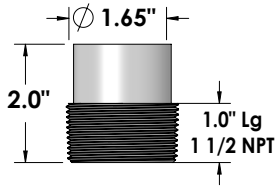
4" Heat-shrink tubing  
1 ea.



4"x 4"x 4" Box @0.33lbs

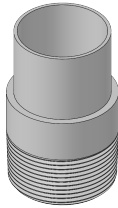
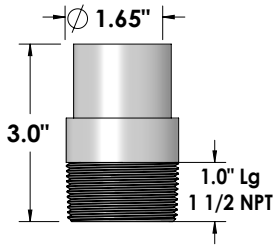
# Sleeve Installation (Required)

## 1US3176S



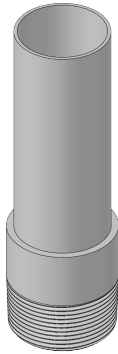
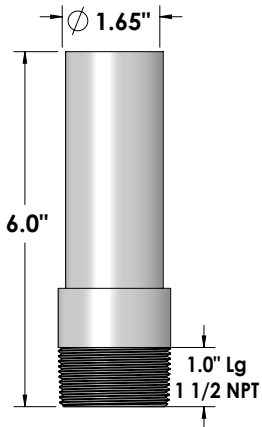
2" installation sleeve. Tube with threaded bottom end for height adjustment up to 3/4" for precision mounting.

## 1US3176M



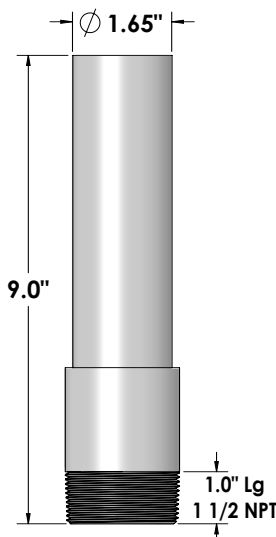
3" installation sleeve. Tube with threaded bottom end for height adjustment up to 3/4" for precision mounting. 2" field cut allowance.

## 1US3176L



6" installation sleeve. Tube with threaded bottom end for height adjustment up to 3/4" for precision mounting. 2" field cut allowance.

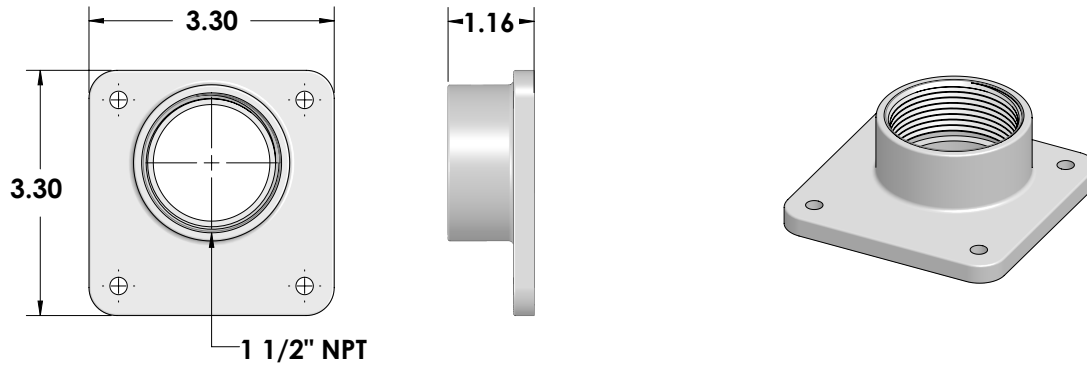
## 1US3176X



9" installation sleeve. Tube with threaded bottom end for height adjustment up to 3/4" for precision mounting. 2" field cut allowance.

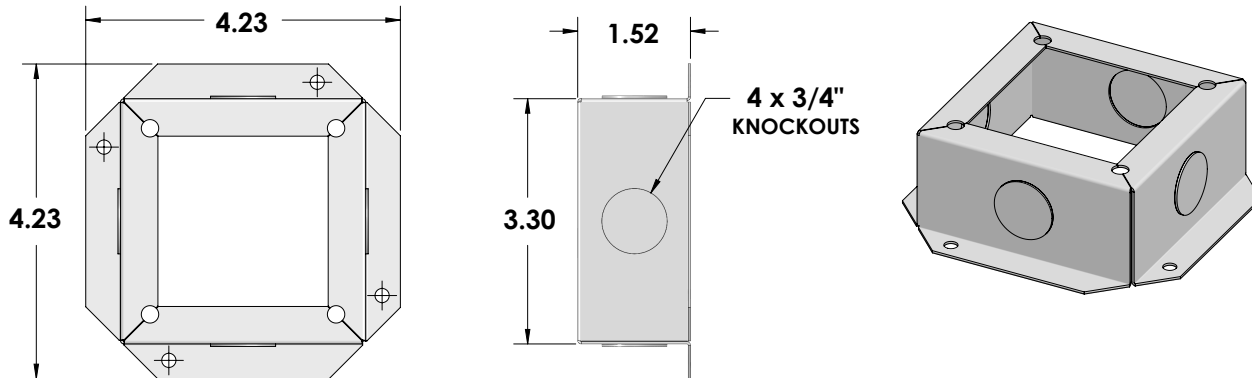
# Installation Accessories (Optional)

## 1US3176HB



HUB with 1.16" height adjustability for field leveling mounted on 3.30" square j-box cover. Optional for use of sleeve only.

## 1US317BX

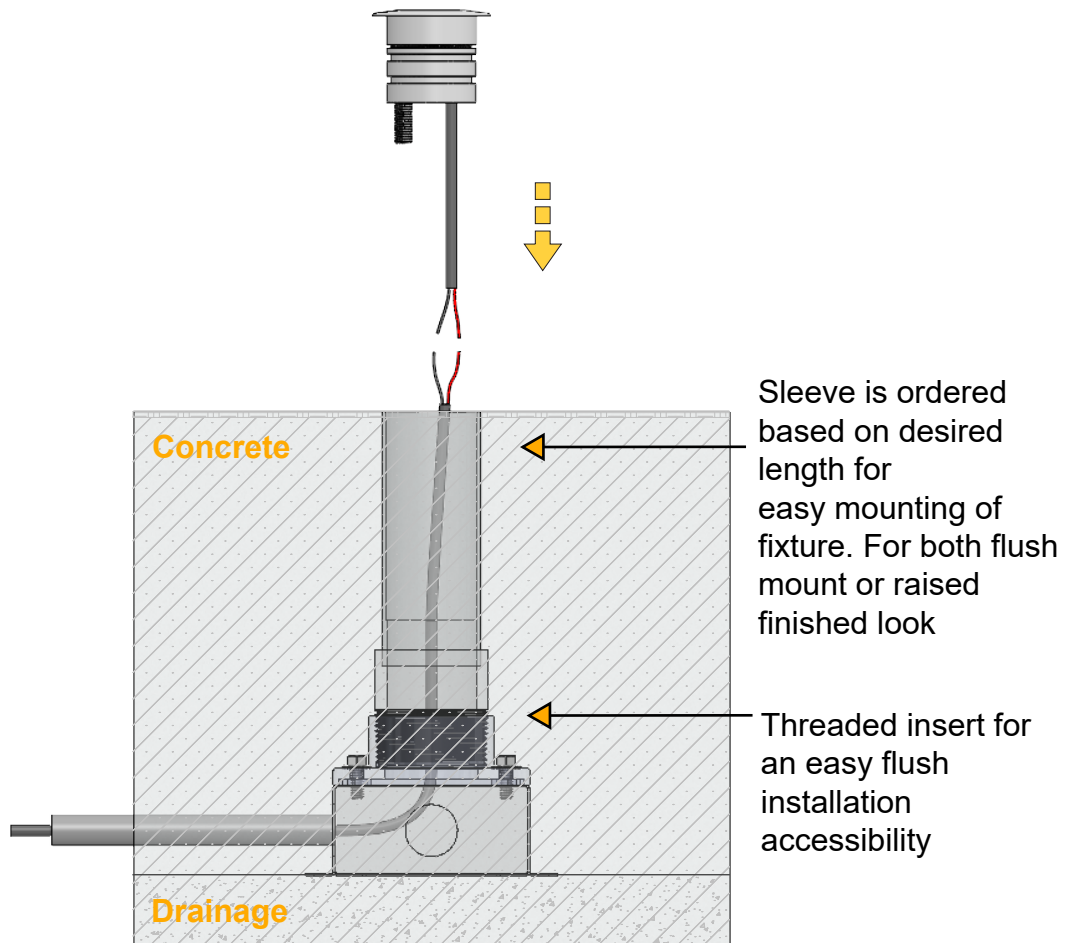


4.23" x 1.5" installation J-box. Stainless Steel with 4ea 3/4" knockouts. Optional for use with HUB only.

# Fixture Installation Instructions

- 1) Installers will dig out trenches or holes big enough and prepare them for installation of the JUPITER Mini sleeve(s)
  - a) Add gravel in the trenches for proper drainage, then place the installation sleeve in designated area
  - b) Installer must make sure that the sleeve is leveled before placing the fixture inside. Be sure the direct burial cable which powers the fixture doesn't affect the leveling of the sleeve.
  - c) Depending on how the installer wants to wire the fixture(s), installer needs to run the 18/2 weatherproof direct burial cable connected from the driver to the sleeve with 2-3 inches of slack for accessibility of wire connection.
- 2) Once cable is through the sleeve, installer will connect the direct burial cable with the fixture using waterproof connectors and components provided.
  - a) Installer will connect the direct burial cable with the fixture's cable using waterproof heat-shrink solder seal connectors provided with the fixture, and then covering the connections with heat-shrink tubing. Double check connections and wire's polarities to ensure correct powering of fixture before adding the heat-shrink tubing. **FIXTURE IS POWERED WITH 24VDC LOW VOLTAGE, DO NOT CONNECT FIXTURE TO LINE VOLTAGE. AN IMPROPER CONNECTION WILL CAUSE THE FIXTURE TO GET DAMAGED AND WILL VOID IT'S WARRANT .**
- 3) Once the fixture is properly connected, insert fixture inside the sleeve.

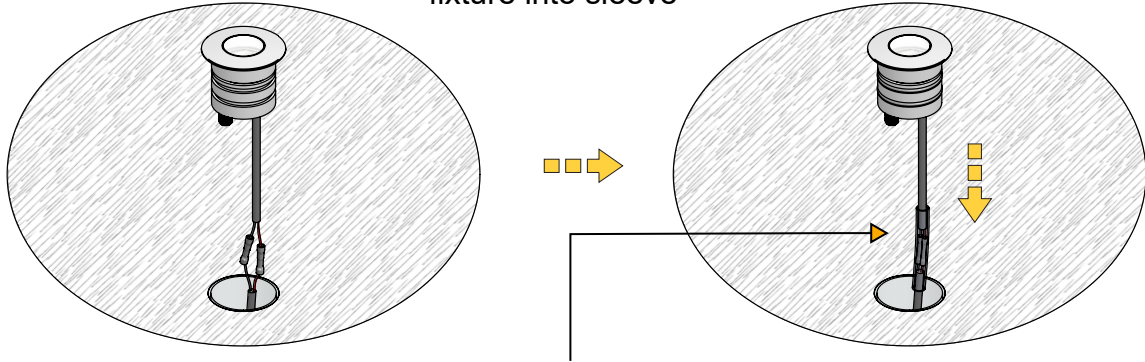
1



# Fixture Installation Instructions

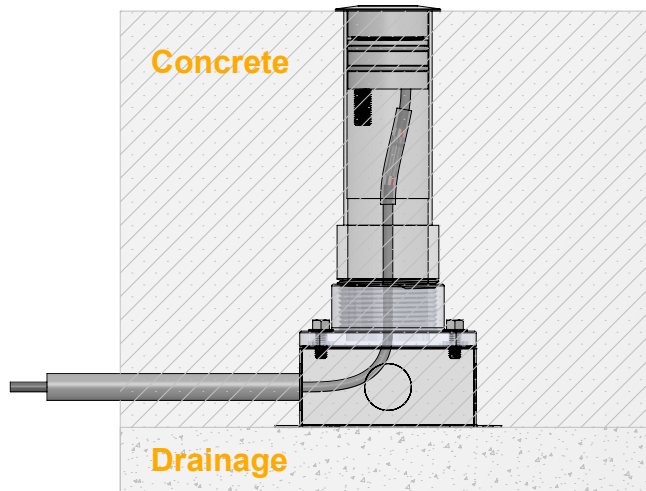
2

Insert lead cable and fixture into sleeve

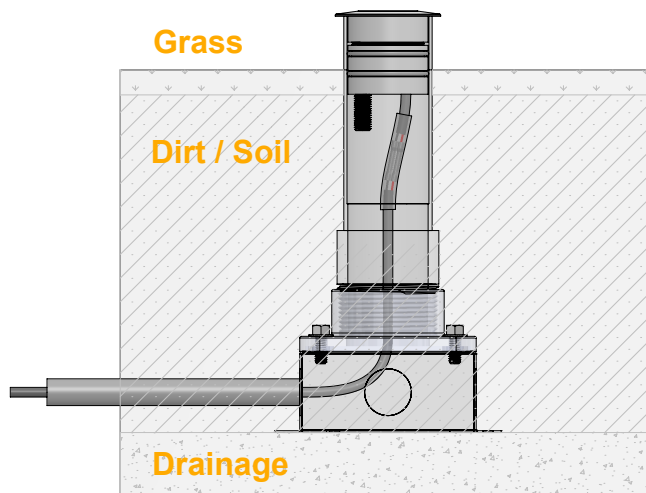


Waterproof Heat-shrink solder seal connectors and Heat-shrink tube (included with fixture)

3A

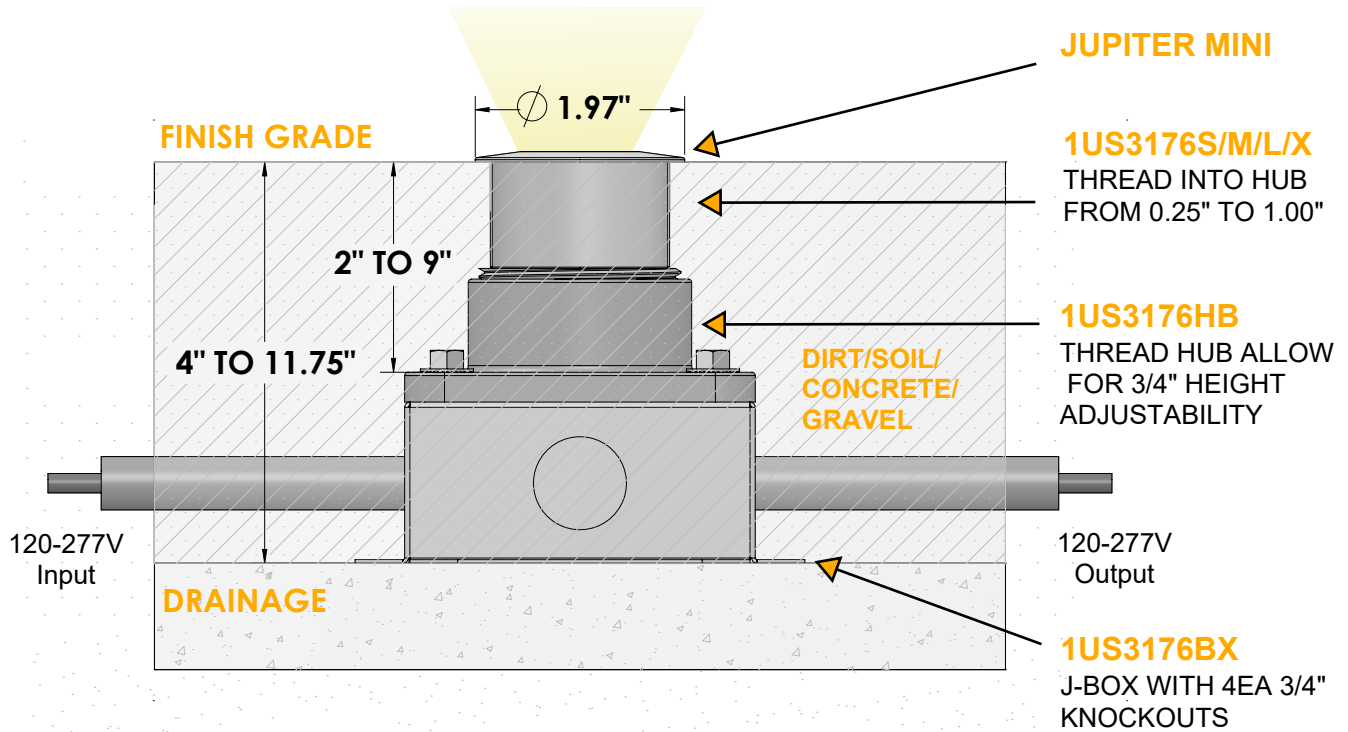


3B



# Installation Diagrams

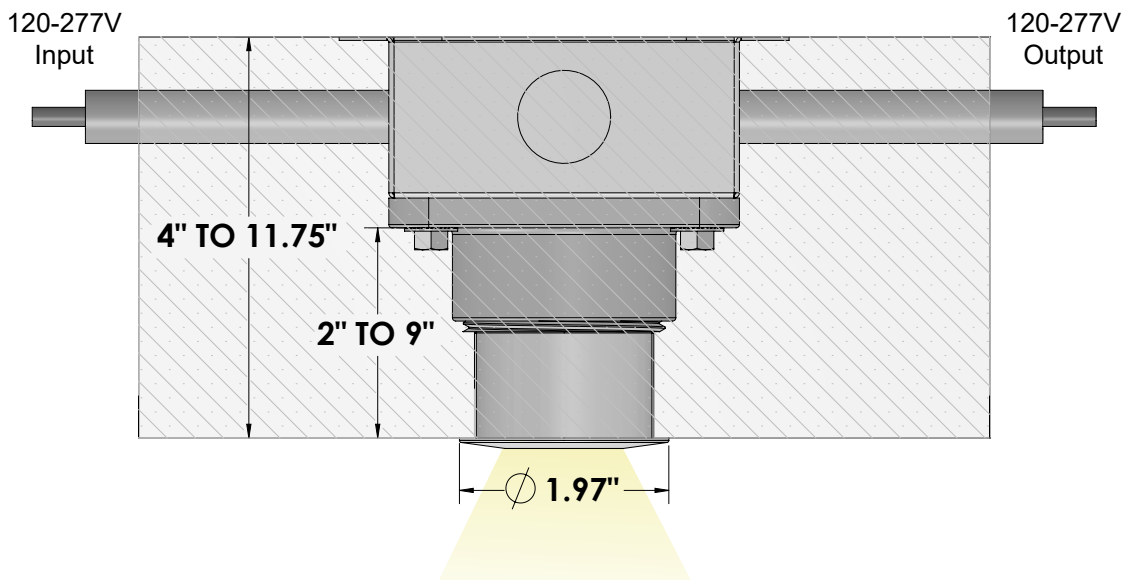
## In-Ground Mounting



### Overall Heights

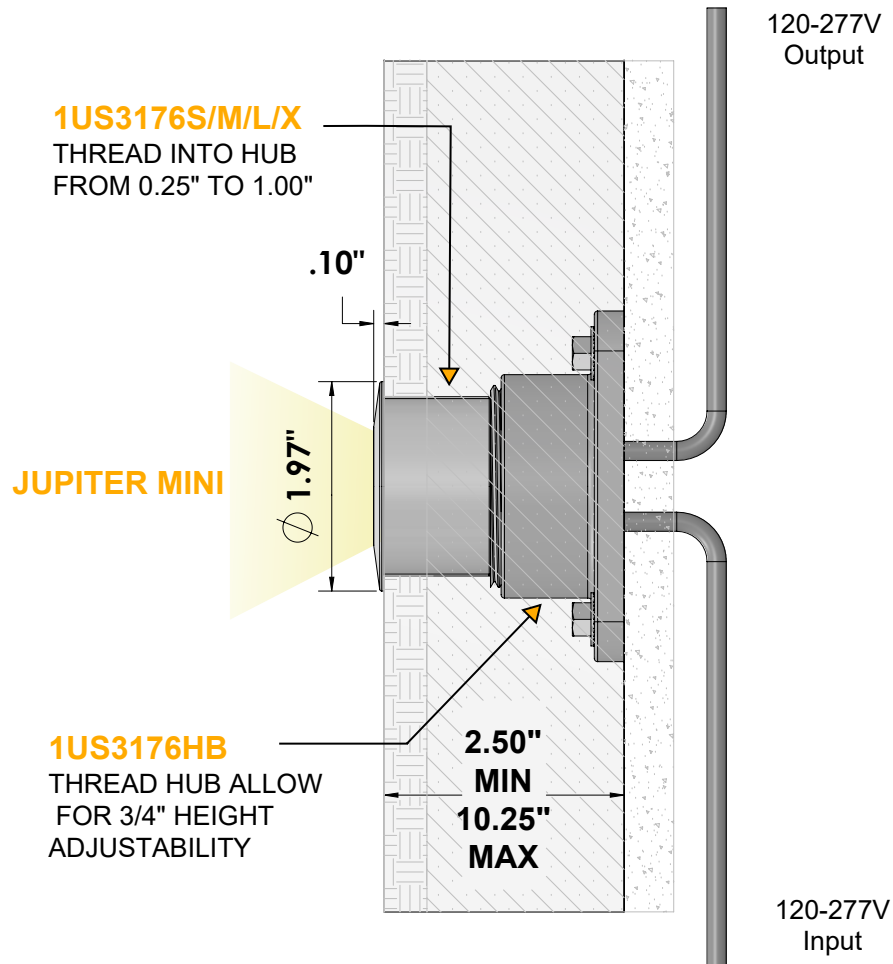
2" Installation Sleeve = 4.00" Min to 4.75" Max    3" Installation Sleeve = 5.00" Min to 5.75" Max  
 6" Installation Sleeve = 8.00" Min to 8.75" Max    9" Installation Sleeve = 11.00" Min to 11.75" Max

## Downlight Mounting

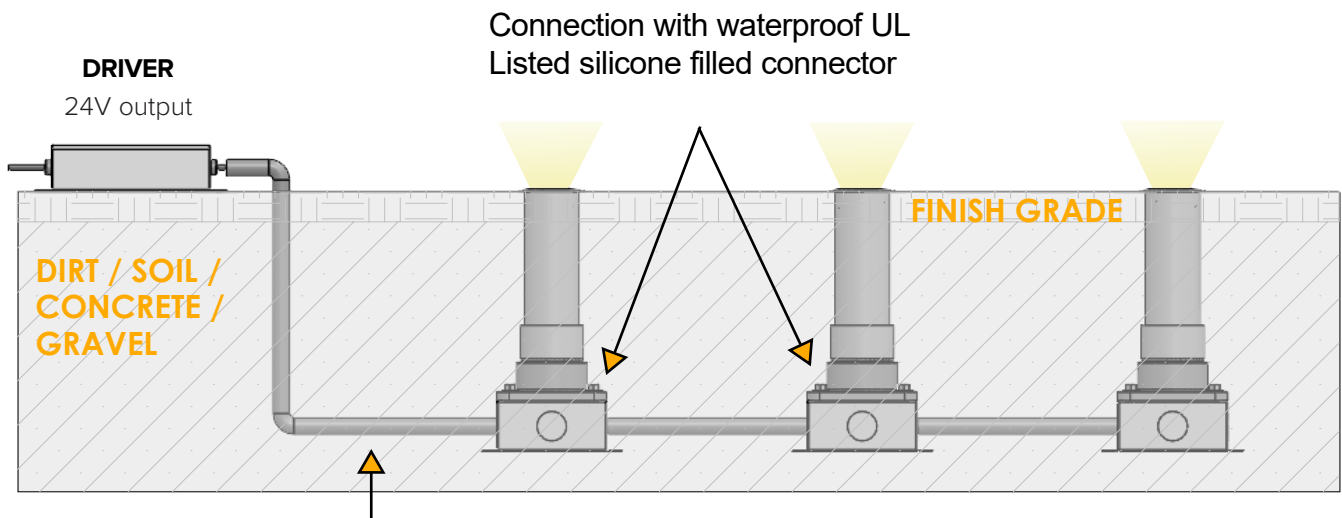


# Installation Diagrams

## Surface Wall Mount



## Example Installation



Up to 80 feet with  
12g 2 Conductor Cable



# Power Supply (Required)

ENCLOSURE								
Part No.	Wattage	Control	Dim Range	Rating	In / Out Voltage	Certification	Dimensions (Enclosure)	Description
<b>DMLE301242UD</b>	30W	MLV / ELV / 0-10V / TRIAC	1%	NEMA3R	120-277V / 24V	UL Class 2	4.47" X 6.79" X 1.38"	EMCOD MLE-UD electronic driver with wiring compartment.
<b>DELV30124DJBX</b>	30W	0-10V	10%	IP65	120-277V / 24V	UL Class 2	12.1" X 2.4" X 1.4"	Magnitude SOLIDrive electronic driver with built in junction box.
<b>DMLE601242UD</b>	60W	MLV / ELV / 0-10V / TRIAC	1%	NEMA3R	120-277V / 24V	UL Class 2	4.47" X 6.79" X 1.38"	EMCOD MLE-UD electronic driver with wiring compartment.
<b>DELV60124DJBX</b>	60W	0-10V	10%	IP65	120-277V / 24V	UL Class 2	12.1" X 2.4" X 1.4"	Magnitude SOLIDrive electronic driver with built in junction box.
<b>DMLE961242UD</b>	96W	MLV / ELV / 0-10V / TRIAC	1%	NEMA3R	120-277V / 24V	UL Class 2	5.16" X 7.73" X 1.54"	EMCOD MLE-UD electronic driver with wiring compartment.
<b>DELV96124DJBX</b>	96W	0-10V	10%	IP65	120-277V / 24V	UL Class 2	12.1" X 2.4" X 1.4"	Magnitude SOLIDrive electronic driver with built in junction box.
<b>DMLE1922242UD</b>	2X96W	MLV / ELV / 0-10V / TRIAC	1%	NEMA3R	120-277V / 24V	UL Class 2	5.04" X 10.94" X 1.81"	EMCOD MLE-UD electronic driver with wiring compartment.
<b>DMLE2882242UD</b>	3X96W	MLV / ELV / 0-10V / TRIAC	1%	NEMA3R	120-277V / 24V	UL Class 2	5.04" X 10.94" X 1.81"	EMCOD MLE-UD electronic driver with wiring compartment.

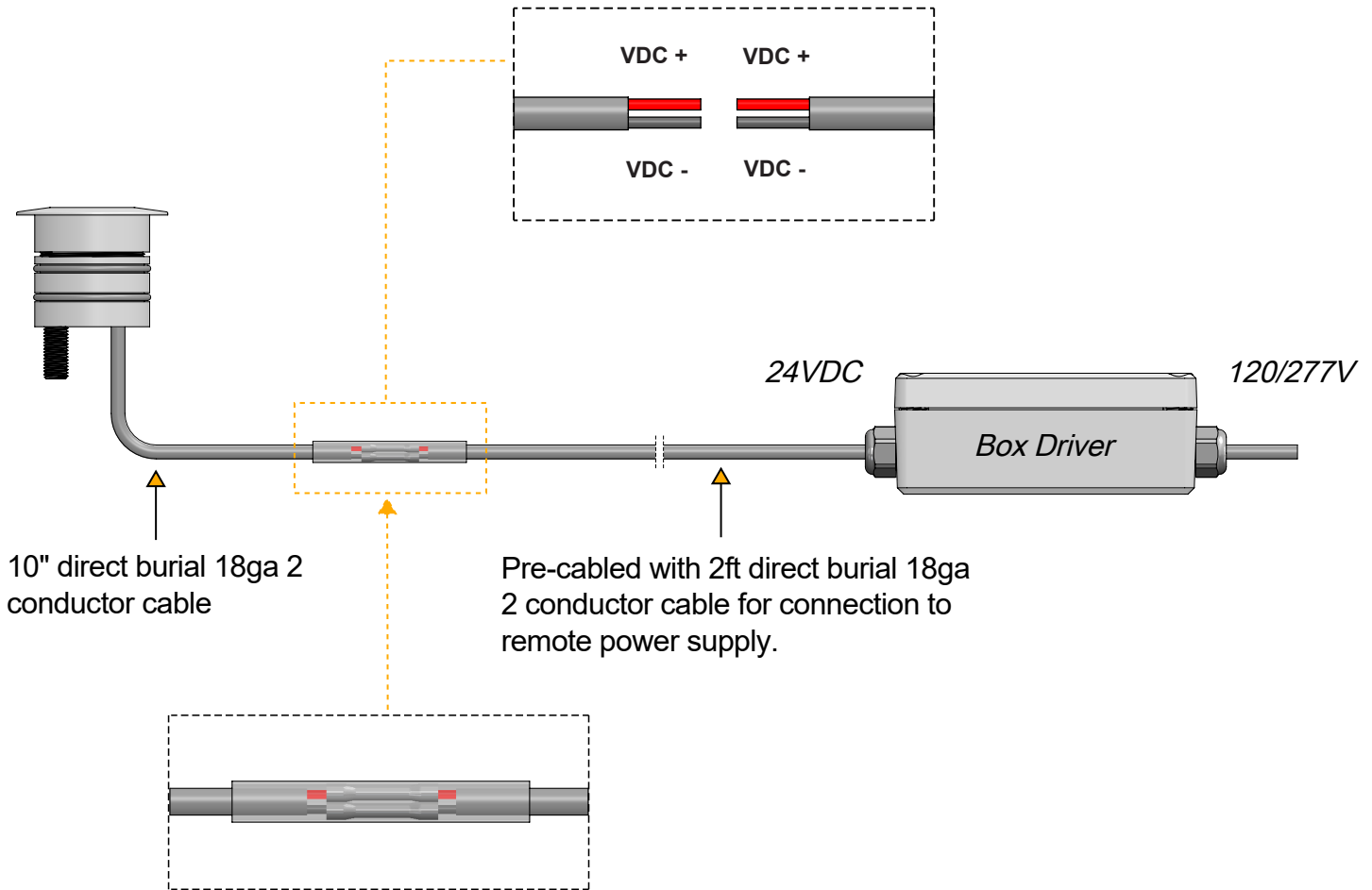
STANDALONE								
Part No.	Wattage	Control	Dim Range	Rating	In / Out Voltage	Certification	Dimensions (Standalone)	Description
<b>DELV30124D</b>	30W	0-10V	10%	IP65	120-277V / 24V	UR Class 2	7.5" X 2.4" X 1.4"	Magnitude SOLIDrive electronic standalone driver. <b>UL listed enclosure provided by others.</b>
<b>DELV60124D</b>	60W	0-10V	10%	IP65	120-277V / 24V	UR Class 2	7.5" X 2.4" X 1.4"	Magnitude SOLIDrive electronic standalone driver. <b>UL listed enclosure provided by others.</b>
<b>DELV96124D</b>	96W	0-10V	10%	IP65	120-277V / 24V	UR Class 2	7.5" X 2.4" X 1.4"	Magnitude SOLIDrive electronic standalone driver. <b>UL listed enclosure provided by others.</b>

## MAX FIXTURES PER DRIVER

Fixture Wattage	Driver Wattage				
	30W	60W	96W	2X96W	3X96W
3W	8	16	25	25+25	25+25+25

# Fixture Wiring Layout

Installer will wire the Jupiter Mini Projector fixture(s) with the daisy chain connection as shown in the diagram below. Be sure that the wiring is done by a qualified electrician that complies with NEC and local building code when installing this product. Provided cable for the fixtures must be UL listed, direct burial, and weatherproof and properly sized based on the amount of fixtures, lengths of wiring, and compliance of NEC regulations. Use proper UL listed waterproof wire connectors depending on conductor size.



10" direct burial 18ga 2 conductor cable

Pre-cabled with 2ft direct burial 18ga 2 conductor cable for connection to remote power supply.

Waterproof Heat-shrink solder seal connectors and Heat-shrink tube (included with fixture)

---

## Maintenance

This fixture was designed and manufactured for a durable, long lasting use with minimum care. To ensure the maximum lifespan of this product, we encourage our customer to provide a quality visual inspection of the fixture and installation accessories every six months.

If there are any visible sign of issues (i.e moisture or dust) during the inspection, please clean any of the dust or moisture with a soft cloth and check to make sure that any of the fixtures are still operating normally. If there are any issues regarding the fixture please contact us as we will assist the situation at hand.

---

## Support

Any questions, problems, or comments you have please feel free to contact our Customer Service department during our business hours Monday-Friday

8am-5pm via: Email: [usaorders@targetti.com](mailto:usaorders@targetti.com)

Phone: (714) 513-1991

Visit our website: <http://www.targettiusa.com>