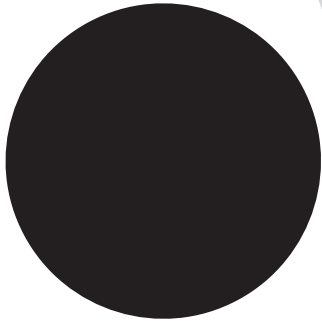
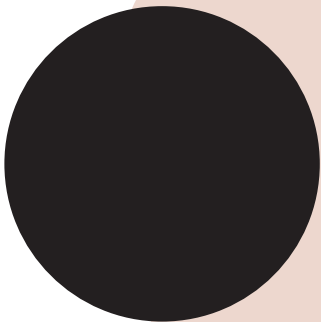
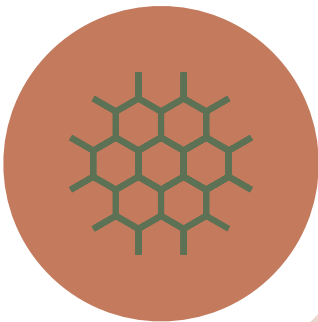


TARGETTI



CATIRPEL

**FUNCTION
FOLLOWS
FORM.**

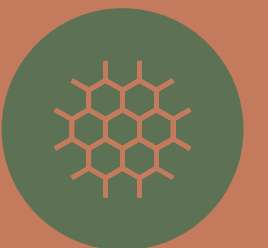




Developed in collaboration with the lighting design firm L'Observatoire International, Catirpel was designed as a modular projector system, ideal for lighting nature and architecture. It moves sinuously in space, orients itself, installs itself in any position, attaches to any surface and disappears into the environment at the same time thanks to its small size and the many finishes available.

“Like a caterpillar on a tree Catirpel weaves into the surroundings, casting an enchanting spell of versatility.”

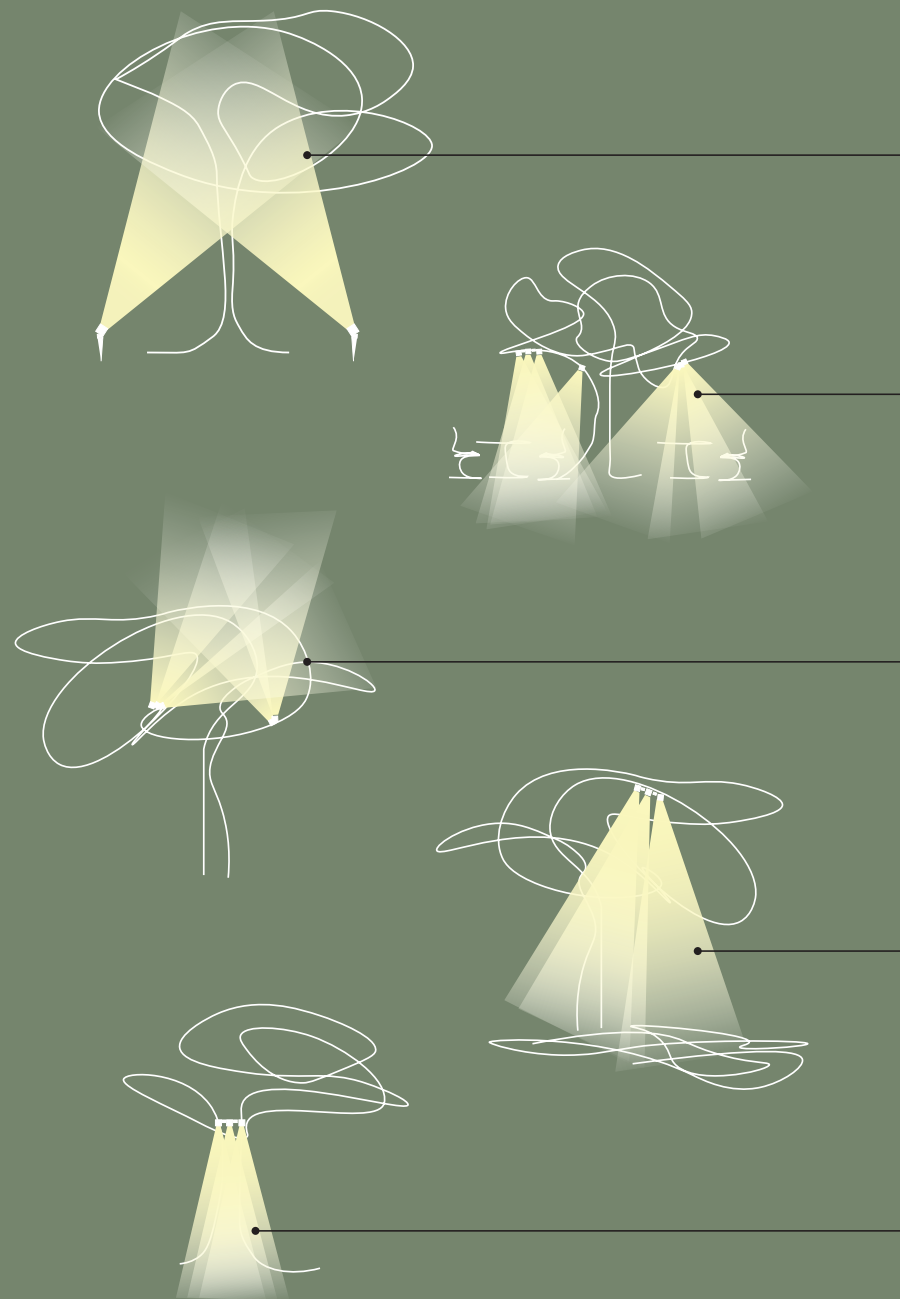
Hervé Descottes
L'Observatoire International



CATIRPEL

FLEXIBLE BY NATURE.

The design of Catirpel takes its inspiration from nature, for its dynamic shape and ability to move sinuously in space. Its great versatility, numerous finishes and innate ability to follow curved surfaces also make it suitable for lighting landscapes in a functional and creative way.



UPLIGHT

Catirpel can be installed on the ground using the practical earth spike to light hedges and trees from below.

DOWN LIGHT

Tree branches become mounting supports to anchor lighting modules to using special belt straps to direct the light beam exactly where it is needed.

INTERNAL GLOW

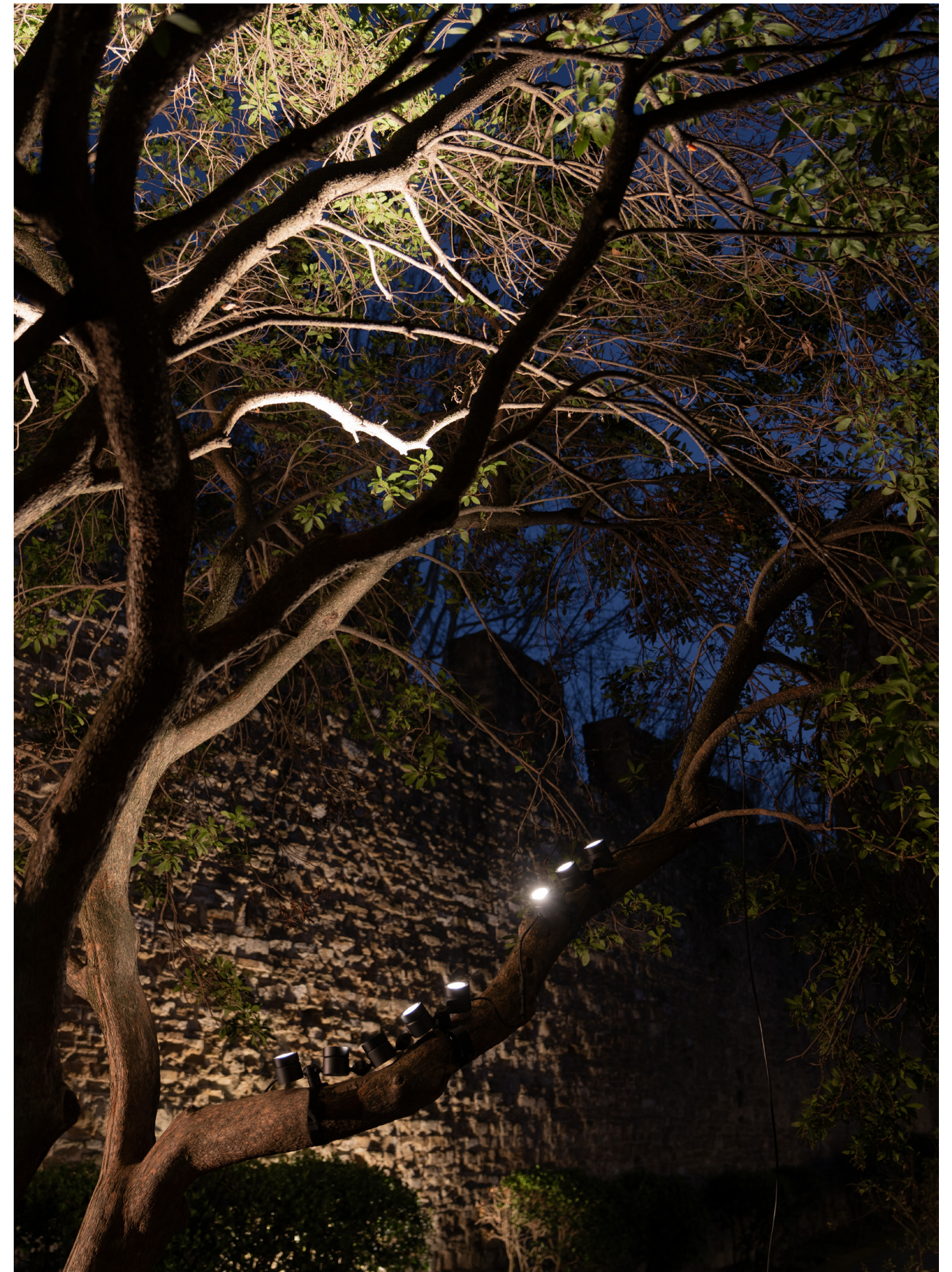
With Catirpel it is also possible to light the upper part of the highest foliage easily reaching areas that are impossible to reach with classic lighting from below.

GRAZING

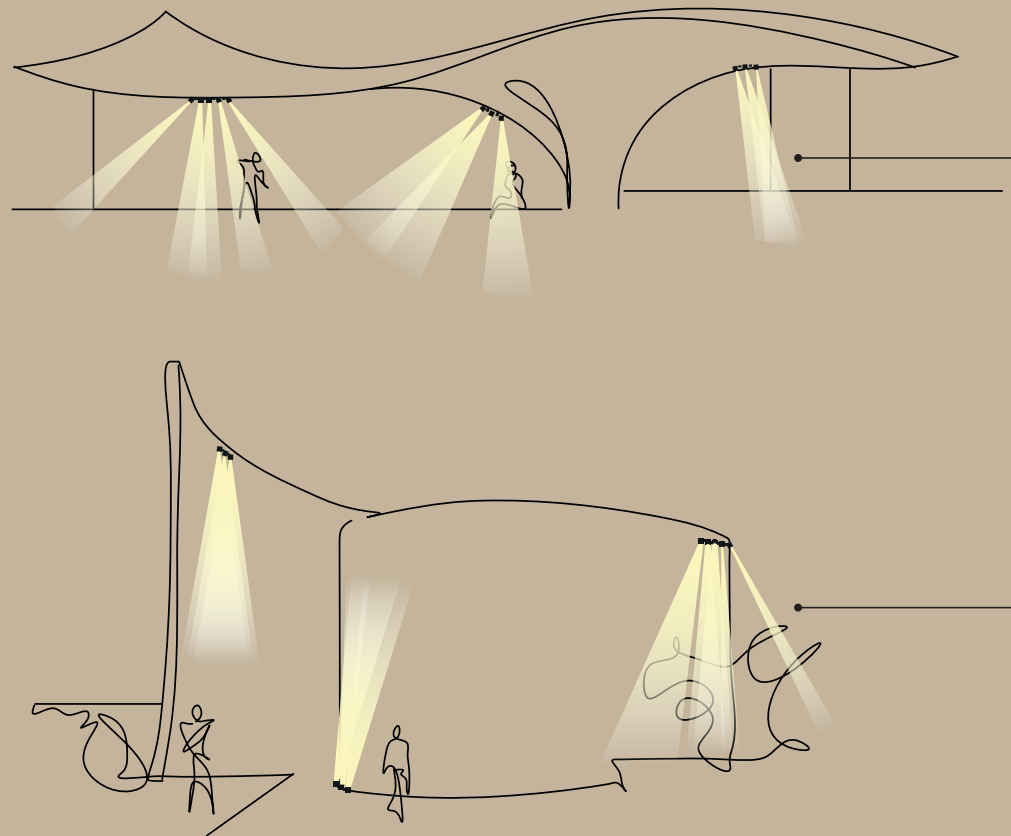
Catirpel with Grazing optics illuminate the entire length of tree, bringing out the natural texture of the landscaping.

MOON LIGHTING

Installed on the highest branches pointing downwards the light modules create light and shade effects on the leaves and branches.



IN CONNECTION WITH ARCHITECTURE.



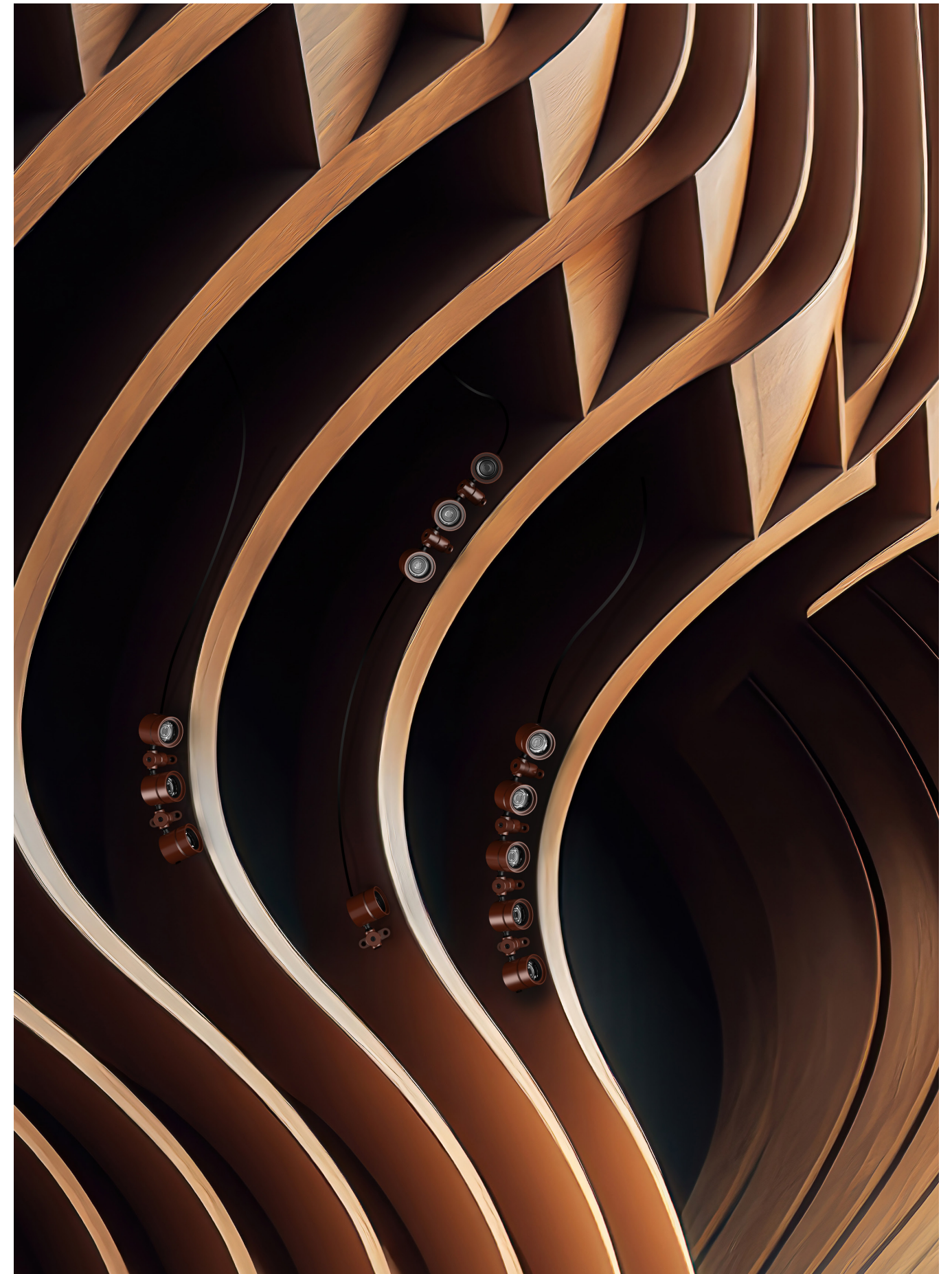
PROJECTION

Catirpel embraces architecture following every type of surface with extreme flexibility. The Grazing optic allows for uniform grazing lighting, ideal for highlighting texture and materials on facades, porticos, vaulted roofs and all vertical surfaces.

GRAZING

It is possible to install projectors on all surfaces and to direct beams exactly where the project requires them for soft and diffused lighting, to highlight architectural details, indicate pedestrian paths or to create accents of light.

Catirpel's innate flexibility combined with the color palette of finishes specifically designed to perfectly integrate into architectural contexts and the wide range of optics make it remarkably versatile for lighting architecture in all its most complex forms: curved surfaces, vaulted ceilings, rib vault ceilings and columns.





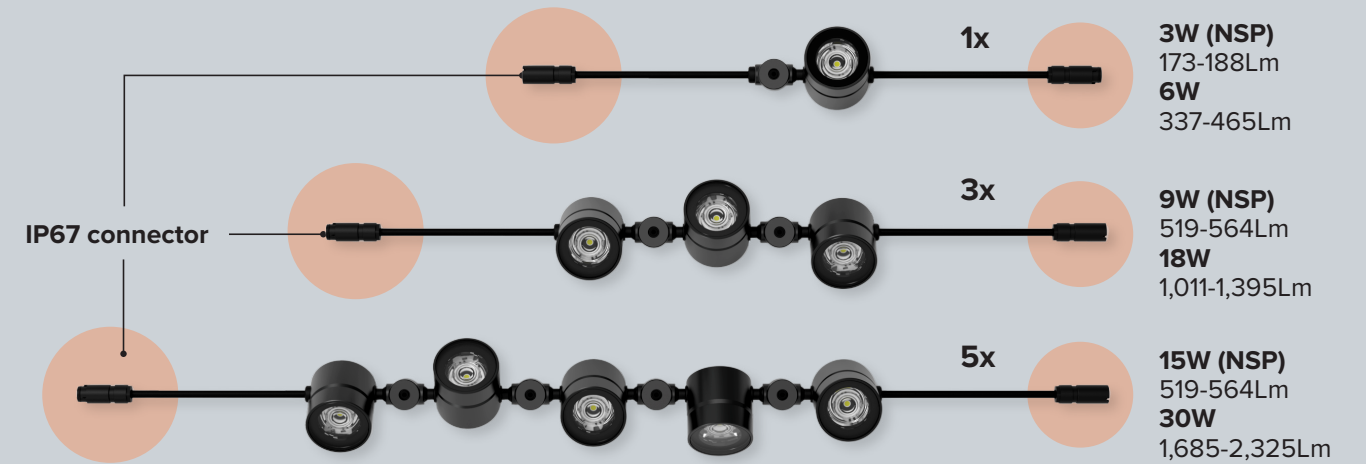
→ IP67 \ IK06

→ 24DC

**ORGANIC
GROWTH**

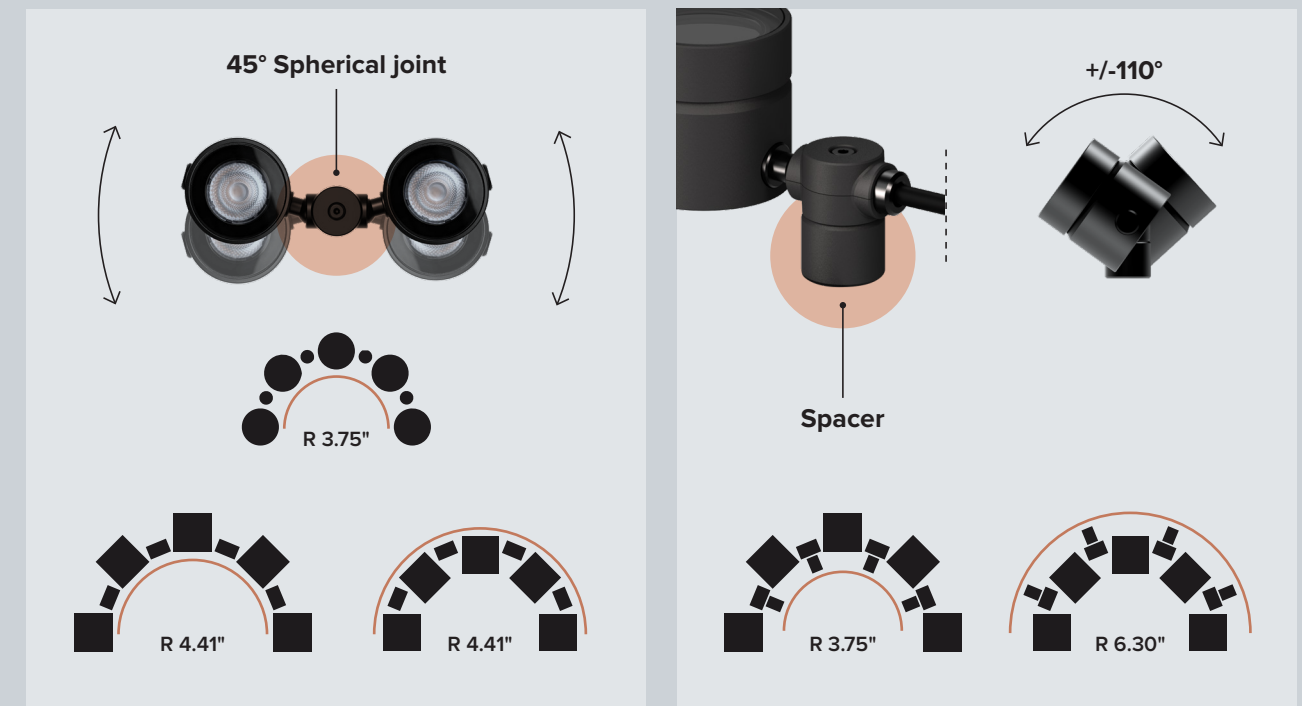
MODULAR SYSTEM

Catirpel is made up of single or multiple light modules connected together with IP67 Plug & Play connectors. Also available in terminal versions without an output cable



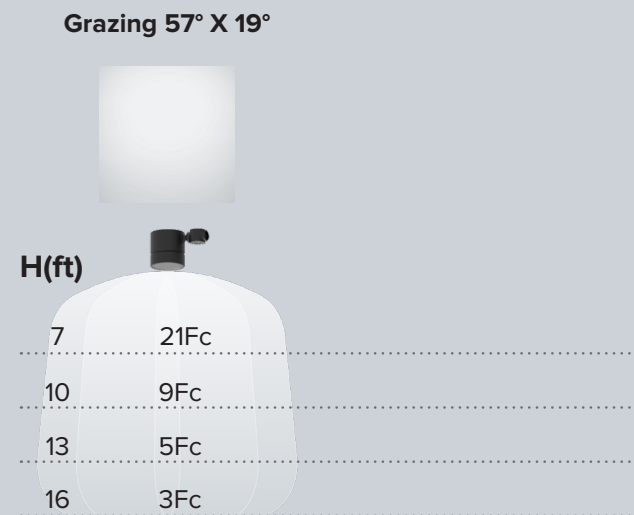
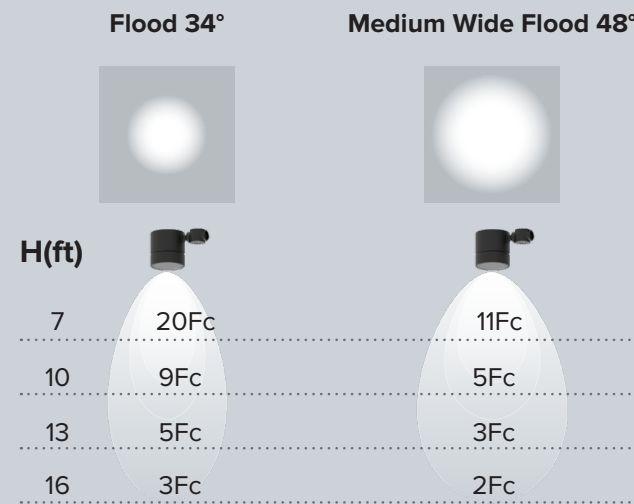
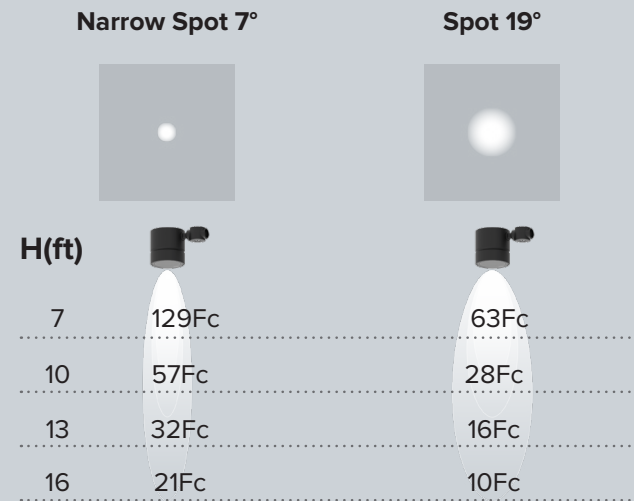
All light units are connected together with spherical joints that make it possible to rotate them horizontally and vertically.

Spacers provided as accessories, positioned under the spherical joints allow for further flexibility of the system and for individual light units to be adjusted accordingly.



SHINE LIGHT ON YOUR IDEAS.

The range of Catirpel optics adds extensive freedom to the system. Accent projected, diffused or grazing lighting are some of the effects the Catirpel optics provide. Fundamental effects for lighting architecture and landscapes to the full.



*Values shown in 3000K.

Catirpel has a range of optical accessories that provide added value to the system, making it possible to shape the light beam according to actual needs.

A
CROSS BAFFLE

The anti-glare grill makes it possible to control the beam maximizing visual comfort.



B
SYMMETRICAL SNOOT

A grill that removes the fall-off component of the 360° beam, focusing the effect only where it is needed.



C
ASYMMETRICAL SNOOT

An asymmetrical grill that removes the fall-off component of the beam, making the light emission slightly asymmetrical.

D
BLADE OF LIGHT

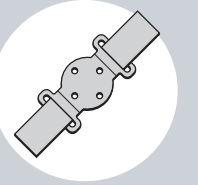
The blade of light linear spread filter. Spot and Narrow Spot optics are recommended for more pronounced effects.

Catirpel is also available in a version with an integrated **Honeycomb** grill for maximum visual comfort.



INSTINCTIVE VERSATILITY.

Catirpel can be installed in many ways thanks to the different types of installation accessories.
On surfaces, suspensions, trees, or on the ground.



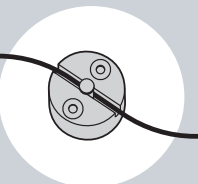
TREE

For installations within trees, special brackets complete with Tree Strap allow the luminaire to be mounted with, technical fabric ties specially made for outdoor installations.



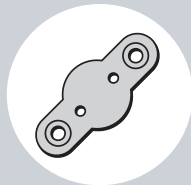
GROUND

To illuminate hedges or landscape borders, Catirpel can be installed on a specialized earth stake. Its small size, flexibility and range of optics make it an ideal tool to light green spaces.



CATENARY

For suspended applications or to light large open spaces, it is possible to install fixtures with a specialized catenary bracket attaching the luminaire modules directly to aircraft cable.



SURFACE

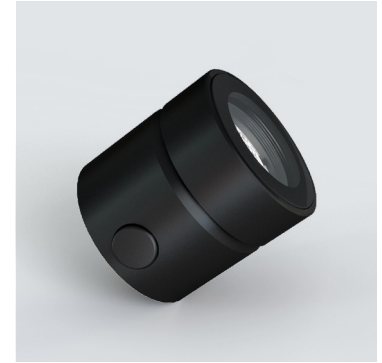
For surface installations, Catirpel can be supplied with specialized surface mounting brackets.





COLORS IN HARMONY WITH NATURE.

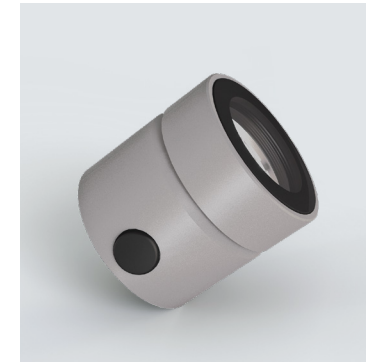
Catirpel is available in ten different finishes, all specially designed to integrate perfectly with nature and architecture.



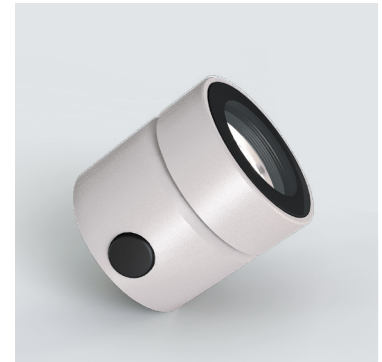
➔ Black Anodized^M



➔ Ferrite Dark Grey^T



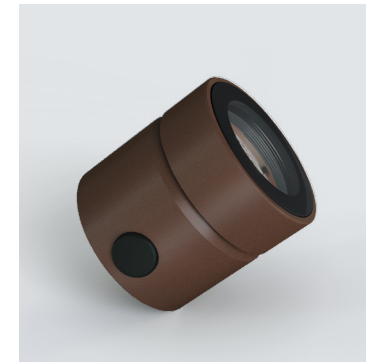
➔ Sandstone Grey^T



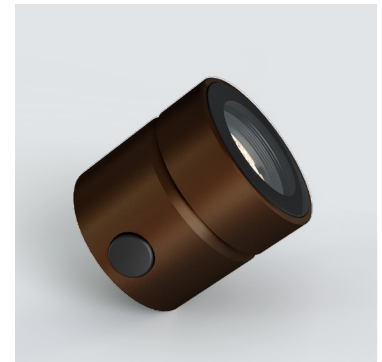
➔ White^T



➔ Dune Grey^T



➔ Heritage Brown^T



➔ Bronze^T



➔ Olive Green^T



➔ Black^T



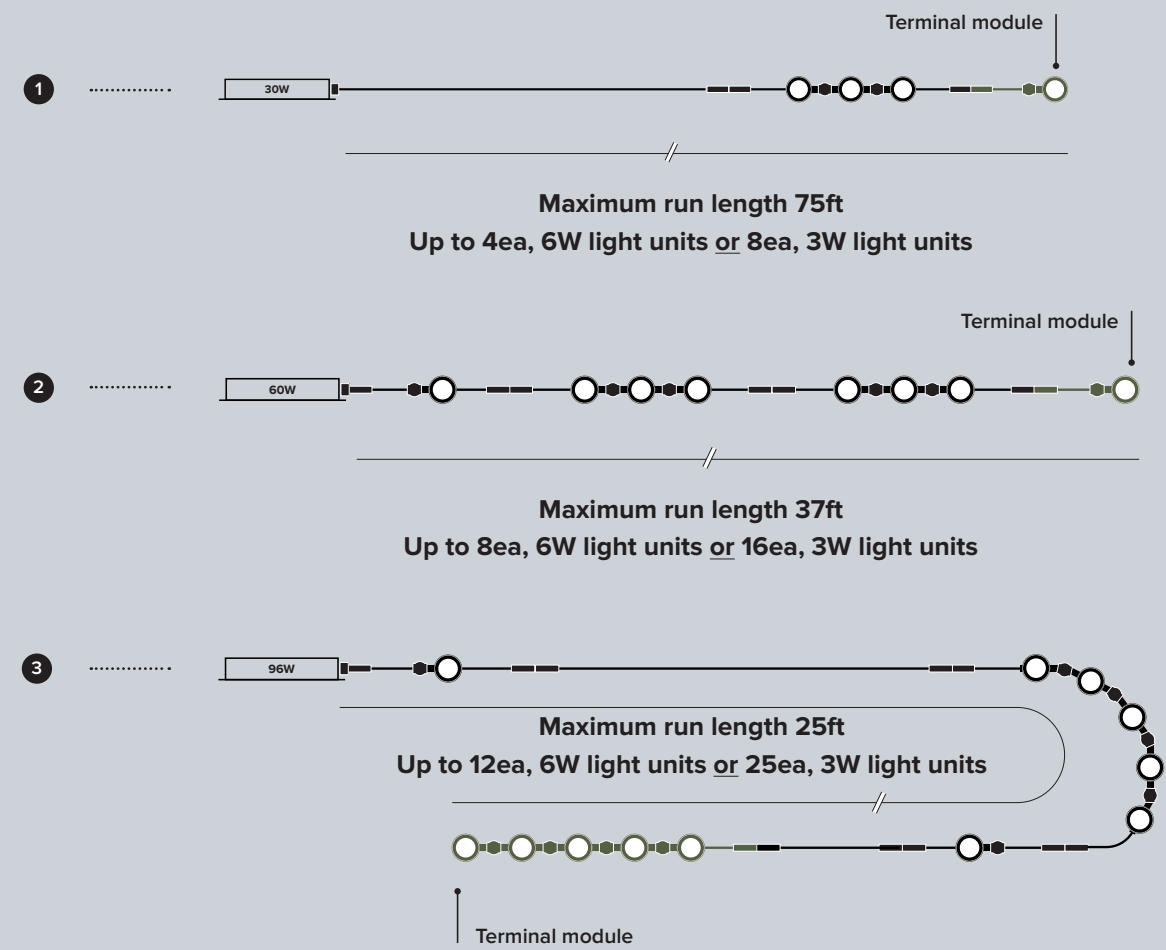
➔ Burnished Copper^M

^T Textured Finish
^M Matte Finish

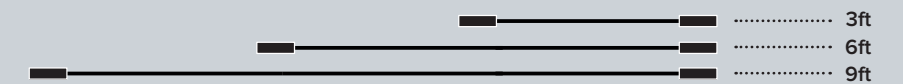


FREE TO EVOLVE.

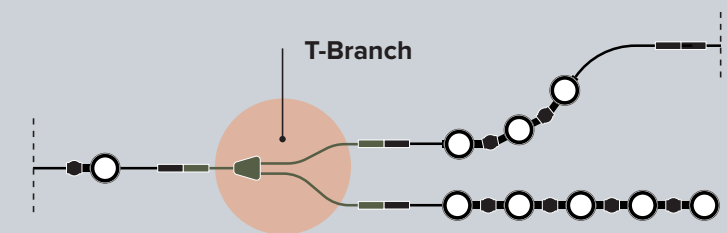
The system is powered by remote driver with different power supplies depending on the number of light units to be lit. It is possible to connect up to 25 light units on each line and the maximum distance between the driver and the last light unit varies according to the number of light units connected up to a maximum of 75ft. A terminal module is recommended for each end run.

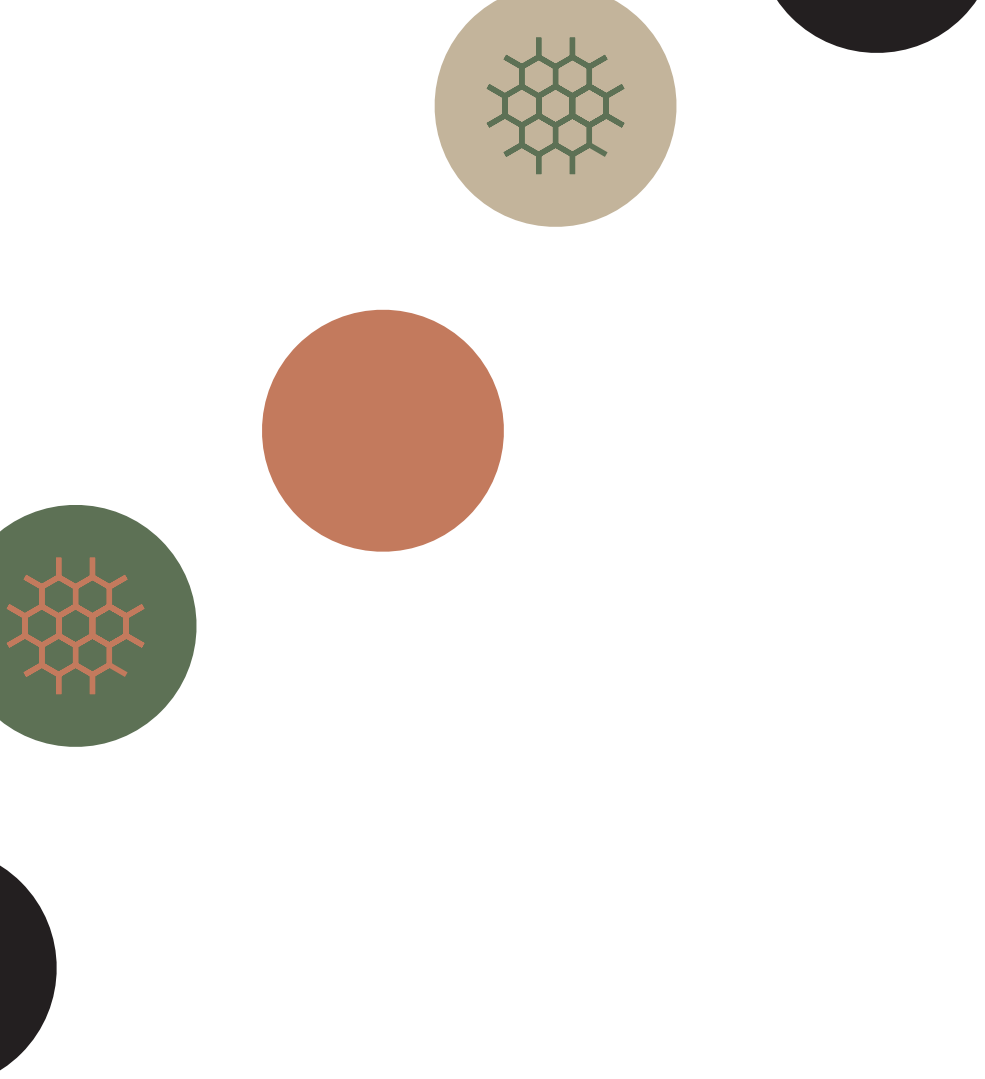


It is possible to increase the distance between the various modules of the system by using the accessory connection cables. All cables have IP67 connectors and are available in 3 different lengths.



There is also a T-branch cable which makes it possible to separate the system into two lines. An ideal solution for installation on different branches of the same tree.





Targetti USA
www.targettiusa.com



Visit our website for detailed information on CATIRPEL.



