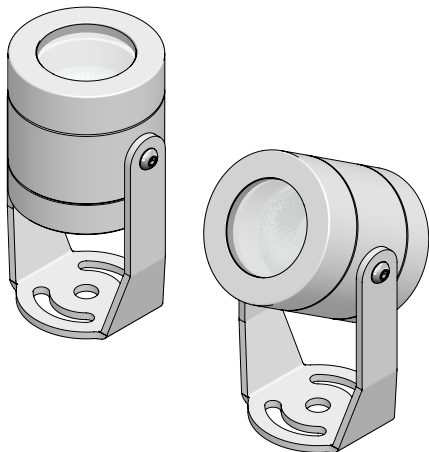


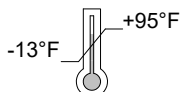


## JUPITER MINI PROJECTOR JPR-

## PROFESSIONAL ADJUSTABLE LED FLOODLIGHT PROJECTOR



**IK 10**  
24V DC



If in doubt about the symbols please  
refer to catalog or website

### WARNING

**To ensure a maximum efficient use of the product, read the instructions before proceeding installment.**



This fixture must be installed by a licensed and qualified electrician. The installer must comply with NEC and local building codes when installing the fixture.



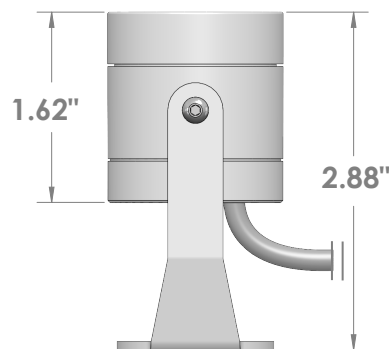
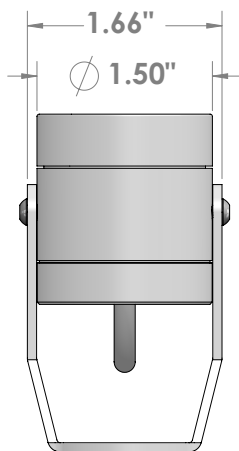
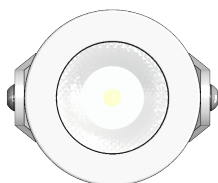
Electrical current can cause painful shock, serious injury, or even death. Make sure you turn off the power supply, ground fixture(s), and make sure all electrical connections are correct and secured tightly.



For use in IP67 installations.



Keep the label of the original packaging if any eventual future claims are needed.

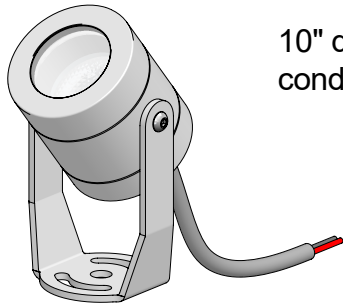


## Table of Contents

Packaging Contents  
Mounting Installation Instructions  
Power Supply  
Fixture Wiring Layout  
Maintenance / Support

Pg.2  
Pg.3-7  
Pg.8  
Pg.9  
Pg.10

# Packaging Contents



10" direct burial 18ga 2  
conductor cable.



4"x 4"x 4" Box @0.5 lbs

## JUPITER MINI PROJECTOR

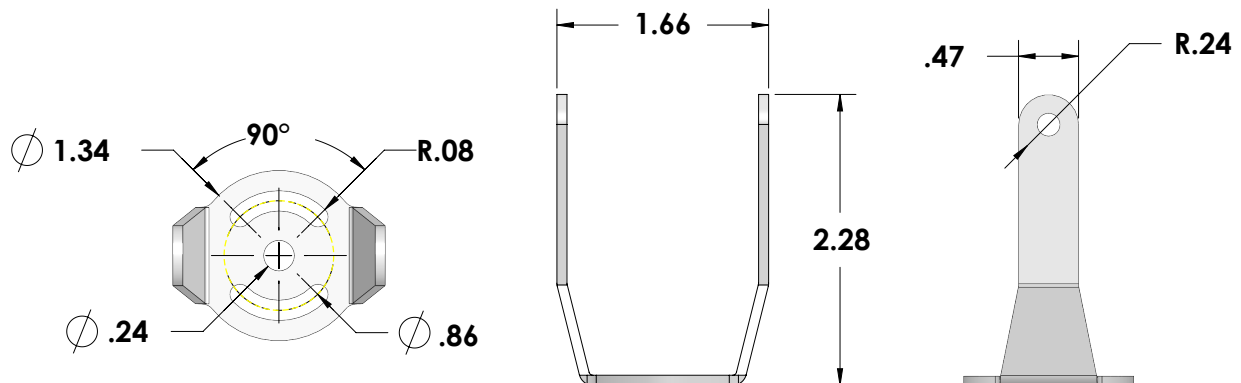
### Finish

Matte smooth finish: ● Black Anodized

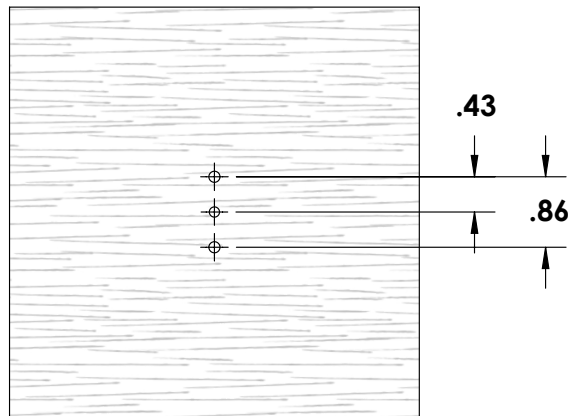
Textured Standard Finish

● Ferrite Dark ● Heritage Brown ● Bronze  
● Grey Black ● White ● Sandstone Grey

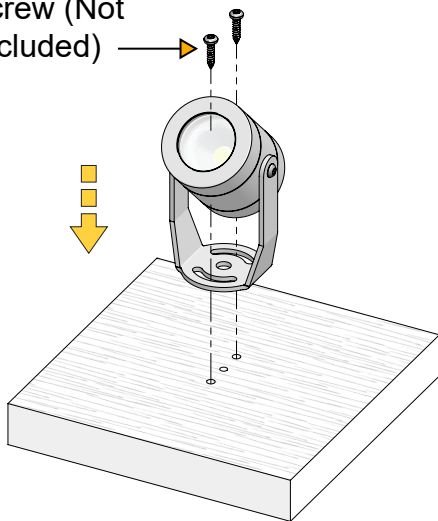
## Mounting Dimensions



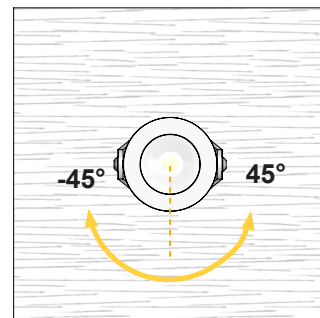
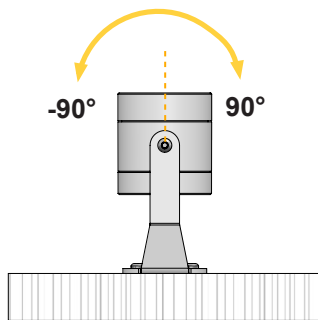
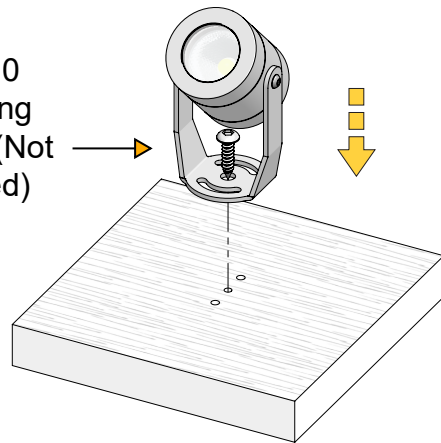
# Mounting Installation Instructions



Use #4  
mounting  
screw (Not  
included)



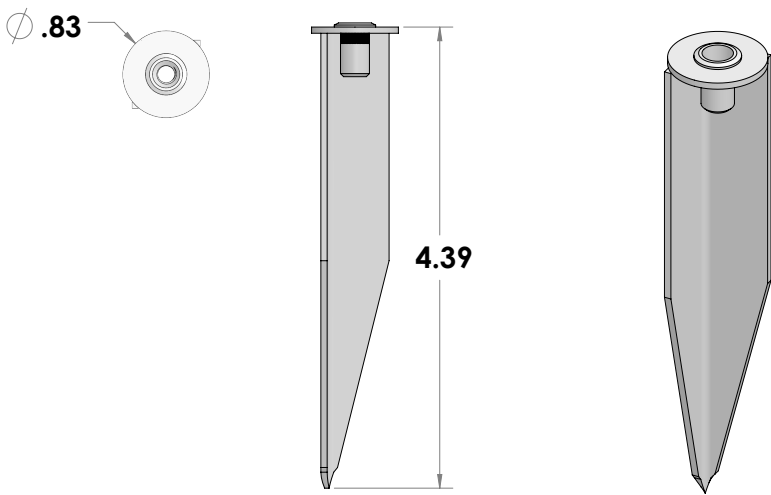
Use #10  
mounting  
screw (Not  
included)



Confirm Specified Mounting (Sold Separately)

1E0995 (\*)

Earth spike. Powder coated stainless steel.

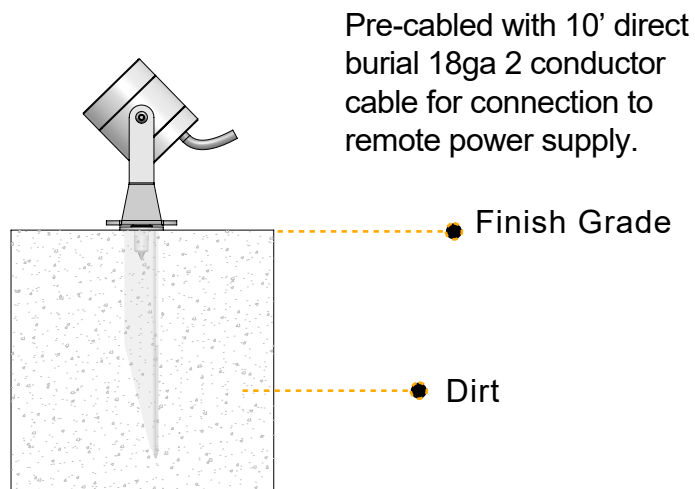
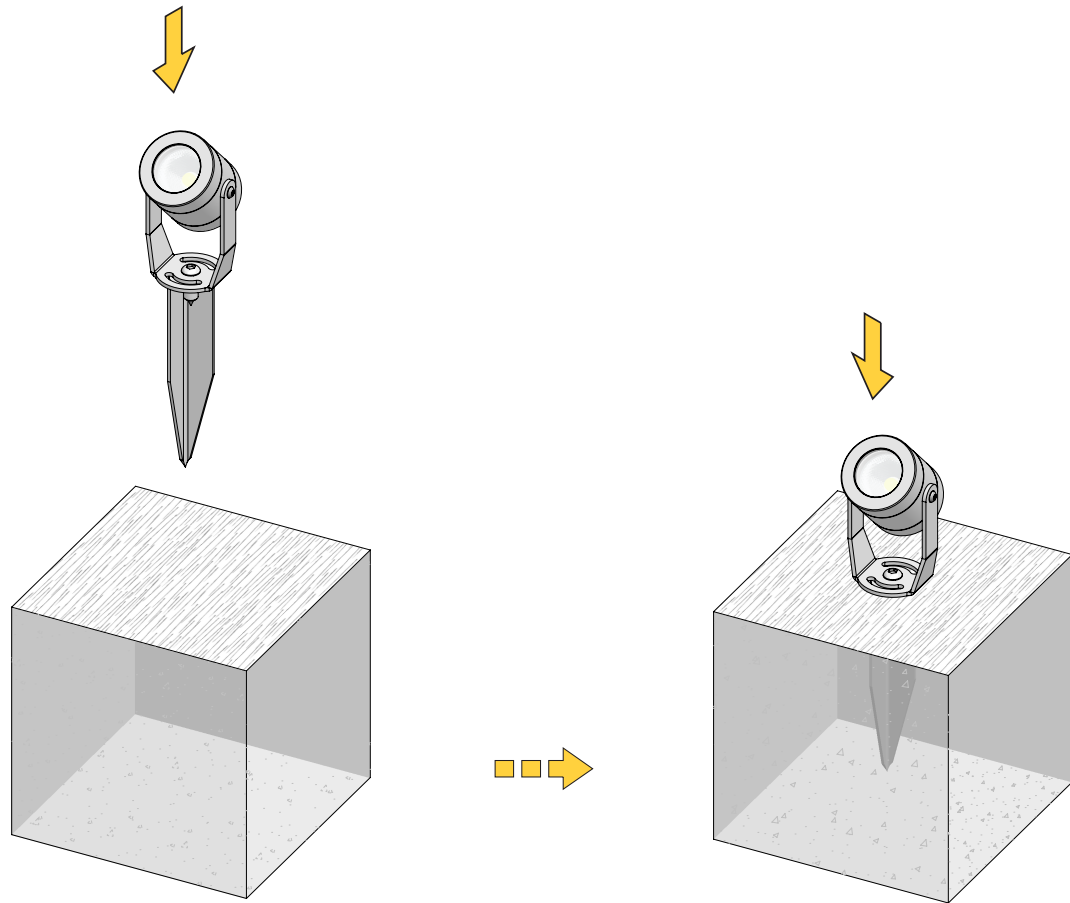


- Finish**      Textured Standard Finish
- |                |                  |                  |
|----------------|------------------|------------------|
| ● Ferrite Dark | ● Heritage Brown | ● Bronze         |
| ● Grey Black   | ● White          | ● Sandstone Grey |

# Installation Instructions(Optional)

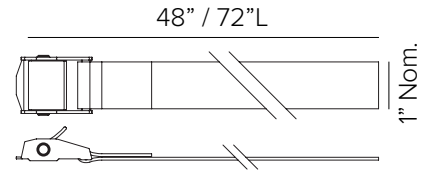
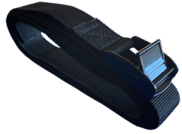
**1E0995 (\*)**

**Earth spike. Powder coated stainless steel.**



## Installation Accessories (Optional)

**MAXIMUM OF ONE ACCESSORY PER FIXTURE**



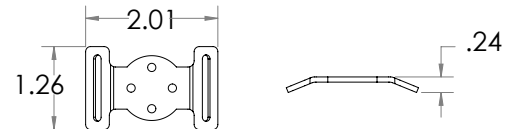
**Tree strap.** Durable marine grade polypropylene webbing flexible strap with stainless steel cam buckle. Maximum of 8ea fixture brackets per single strap.

**(REQUIRED FOR TREE MOUNTING)**

**Finish** ● Black ● Coyote Brown ● Silver Grey ● Graphite Grey

**Length 48\"**

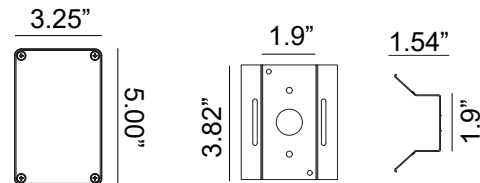
**Length 72\"**



**Tree fixture mount bracket** comprised of powder coated stainless steel for use with tree strap. **(REQUIRED FOR TREE MOUNTING)**

**Finish** ● Black ● Bronze ● Sandstone Grey ● Ferrite Dark Grey

**Part No.** 1USA020BT 1USA020BZ 1USA020SG 1USA020FG

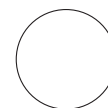


**Connection box.** Painted aluminum UL listed j-box with single input and 4ea max outputs for lateral cable exit. Provided with 1ea 1/2\" cable gland and 4ea 3/8\" cable gland, 3ea plugs provided along with mounting bracket, **tree strap sold separately**. Used to connect single 24V DC low voltage cable from remote driver to connection box. For use with 8ea max fixture, use 2ea connection boxes on 1ea strap.

**(OPTIONAL)**

**Finish** ● Black ● Bronze ● Sandstone Grey ● Ferrite Dark Grey

**Part No.** TTC02SBK TTC02SBZ TTC02SSG TTC02SFG



Expands  
Ø 0.38\"  
to 1\"

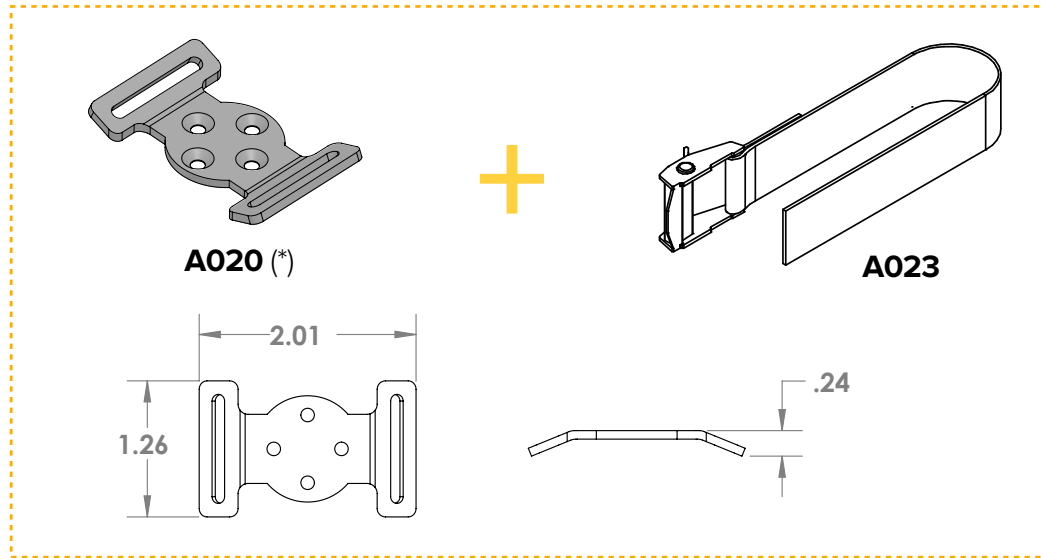
**Mesh wire protection cable sleeve**, available per foot. Comprised of braided polyethylene terephthalate (PET) mono-filament webbing resistant to chemical degradation, UV radiation, and abrasion. **To be used in installations where multiple cables can be combined into a 'single' cable look and/or to conceal the cable to match the finish of the surface.** **(OPTIONAL)**

**Finish** ● Black ● Coyote Brown ● Silver Grey ● Graphite Grey

**Part No.** TTMW01BK TTMW01BR TTMW01SG TTMW01GG

## Installation Instructions (Optional)

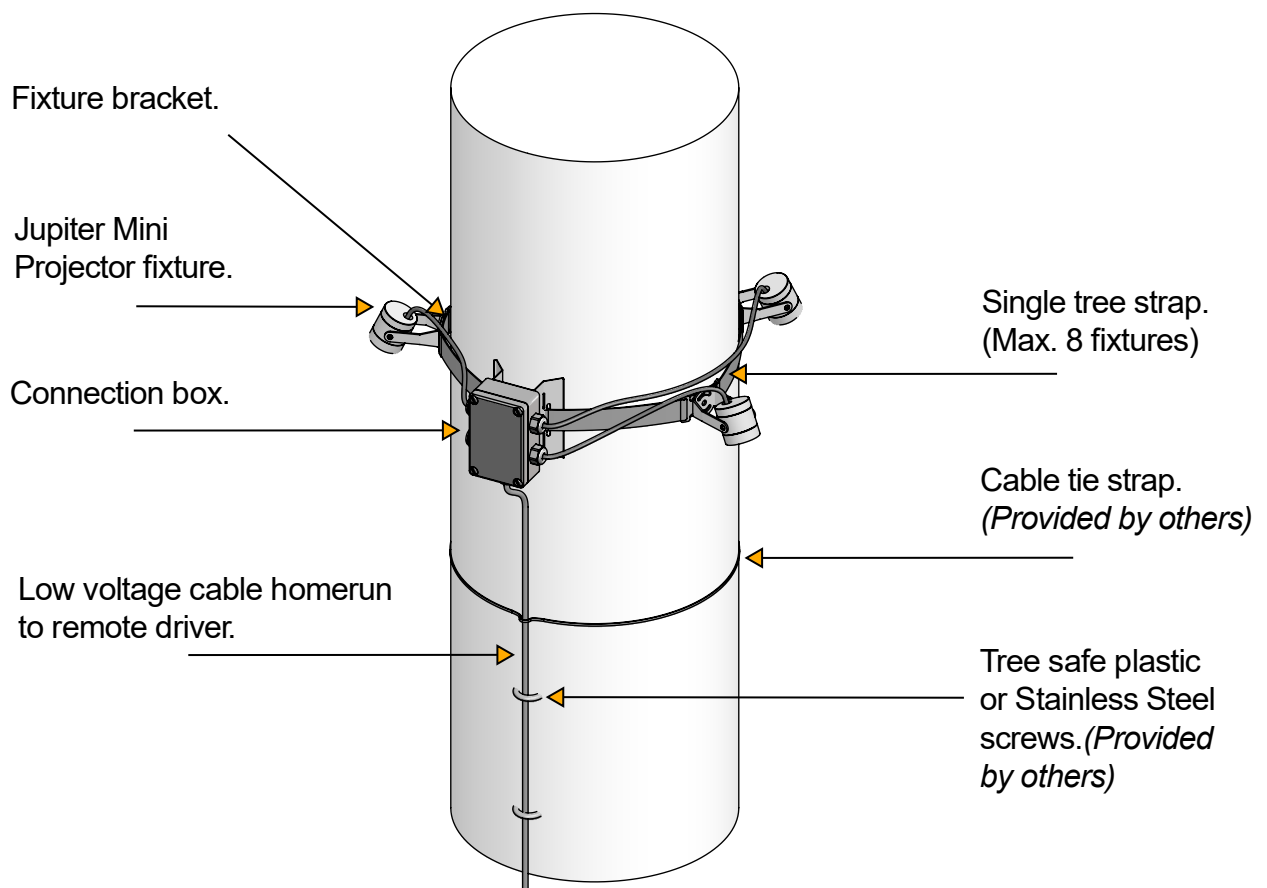
With **CATIRPEL SPACER-A022**. Required for individual fixture aiming. *Compatible with TREE FIXTURE MOUNT BRACKET- A020 (\*) and TREE STRAP - A023*. Default finish is Ferrite Gray. Be sure to add color extension if required.



● Ferrite Dark Grey (FE)\* ● Heritage Brown (HB)\* ● Bronze (BZ)\* ● White (WT)\* ● Black Anodized (BA)\* ● Sandstone Grey (SG)\*

### TREE WIRING CONFIGURATION

*Note: Suggested to adjust the strap every 6 months in order to prevent tree damage.*



## Power Supply (Required)

ENCLOSURE								
Part No.	Wattage	Control	Dim Range	Rating	In / Out Voltage	Certification	Dimensions (Enclosure)	Description
<b>DMLE301242UD</b>	30W	MLV / ELV / 0-10V / TRIAC	1%	NEMA3R	120-277V / 24V	UL Class 2	4.47" X 6.79" X 1.38"	EMCOD MLE-UD electronic driver with wiring compartment.
<b>DELV30124DJBX</b>	30W	0-10V	10%	IP65	120-277V / 24V	UL Class 2	12.1" X 2.4" X 1.4"	Magnitude SOLIDrive electronic driver with built in junction box.
<b>DMLE601242UD</b>	60W	MLV / ELV / 0-10V / TRIAC	1%	NEMA3R	120-277V / 24V	UL Class 2	4.47" X 6.79" X 1.38"	EMCOD MLE-UD electronic driver with wiring compartment.
<b>DELV60124DJBX</b>	60W	0-10V	10%	IP65	120-277V / 24V	UL Class 2	12.1" X 2.4" X 1.4"	Magnitude SOLIDrive electronic driver with built in junction box.
<b>DMLE961242UD</b>	96W	MLV / ELV / 0-10V / TRIAC	1%	NEMA3R	120-277V / 24V	UL Class 2	5.16" X 7.73" X 1.54"	EMCOD MLE-UD electronic driver with wiring compartment.
<b>DELV96124DJBX</b>	96W	0-10V	10%	IP65	120-277V / 24V	UL Class 2	12.1" X 2.4" X 1.4"	Magnitude SOLIDrive electronic driver with built in junction box.
<b>DMLE1922242UD</b>	2X96W	MLV / ELV / 0-10V / TRIAC	1%	NEMA3R	120-277V / 24V	UL Class 2	5.04" X 10.94" X 1.81"	EMCOD MLE-UD electronic driver with wiring compartment.
<b>DMLE2882242UD</b>	3X96W	MLV / ELV / 0-10V / TRIAC	1%	NEMA3R	120-277V / 24V	UL Class 2	5.04" X 10.94" X 1.81"	EMCOD MLE-UD electronic driver with wiring compartment.
STANDALONE								
Part No.	Wattage	Control	Dim Range	Rating	In / Out Voltage	Certification	Dimensions (Standalone)	Description
<b>DELV30124D</b>	30W	0-10V	10%	IP65	120-277V / 24V	UR Class 2	7.5" X 2.4" X 1.4"	Magnitude SOLIDrive electronic standalone driver. <b>UL listed enclosure provided by others.</b>
<b>DELV60124D</b>	60W	0-10V	10%	IP65	120-277V / 24V	UR Class 2	7.5" X 2.4" X 1.4"	Magnitude SOLIDrive electronic standalone driver. <b>UL listed enclosure provided by others.</b>
<b>DELV96124D</b>	96W	0-10V	10%	IP65	120-277V / 24V	UR Class 2	7.5" X 2.4" X 1.4"	Magnitude SOLIDrive electronic standalone driver. <b>UL listed enclosure provided by others.</b>

## MAX FIXTURES PER DRIVER

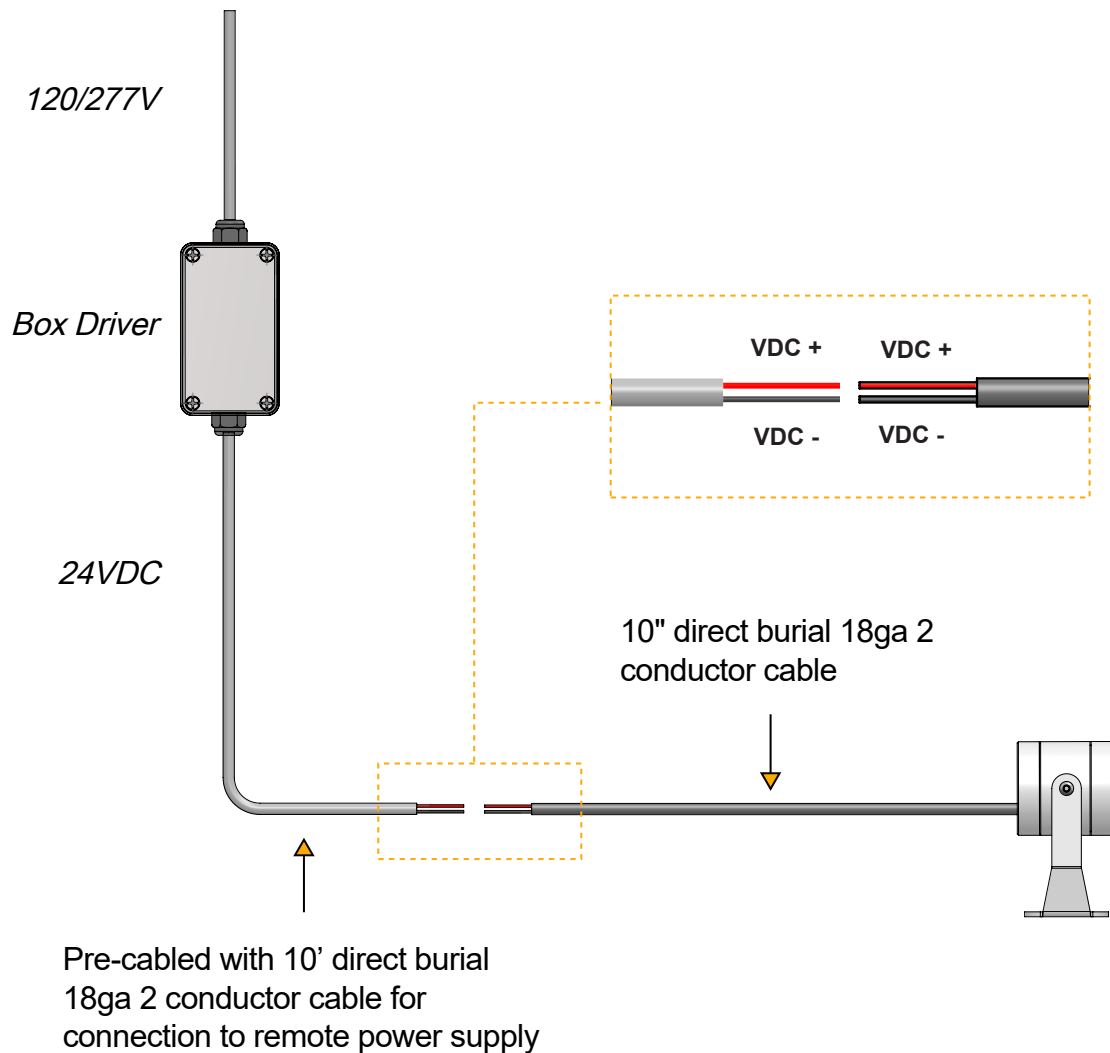
Fixture Wattage	Driver Wattage				
	30W	60W	96W	2X96W	3X96W
3W	8	16	25	24+24	24+24+24



## Fixture Wiring Layout

Installer will wire the Jupiter Mini Projector fixture(s) with the daisy chain connection as shown in the diagram below. Be sure that the wiring is done by a qualified electrician that complies with NEC and local building code when installing this product. Provided cable for the fixtures must be UL listed, direct burial, and weatherproof and properly sized based on the amount of fixtures, lengths of wiring, and compliance of NEC regulations.

Use proper UL listed waterproof wire connectors depending on conductor size.



---

## Maintenance

This fixture was designed and manufactured for a durable, long lasting use with minimum care. To ensure the maximum lifespan of this product, we encourage our customer to provide a quality visual inspection of the fixture and installation accessories every six months.

If there are any visible sign of issues (i.e moisture or dust) during the inspection, please clean any of the dust or moisture with a soft cloth and check to make sure that any of the fixtures are still operating normally. If there are any issues regarding the fixture please contact us as we will assist the situation at hand.

---

## Support

Any questions, problems, or comments you have please feel free to contact our Customer Service department during our business hours Monday-Friday

8am-5pm via: Email: [usaorders@targetti.com](mailto:usaorders@targetti.com)

Phone: (714) 513-1991

Visit our website: <http://www.targettiusa.com>