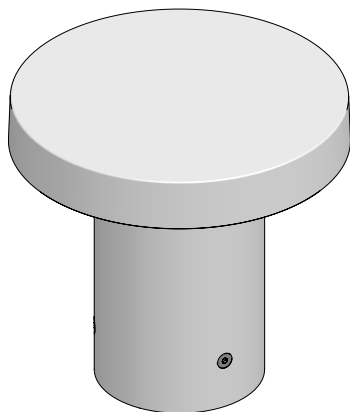




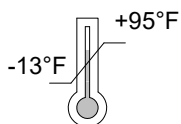
## CHIOBO PATH

CBPRP-

## RADIAL EMISSION LED MINI BOLLARD

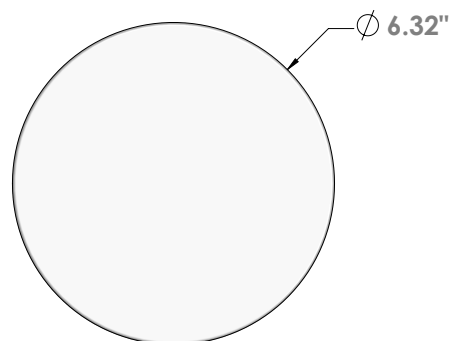
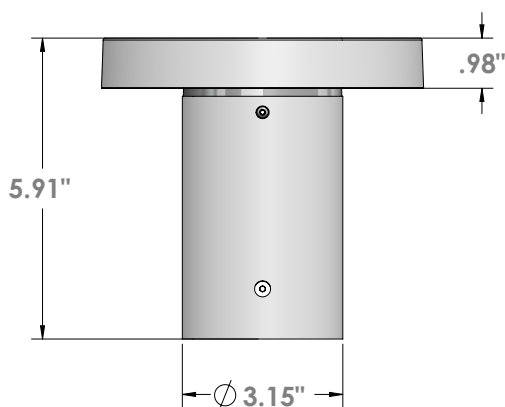


24V DC IK10



If in doubt about the symbols  
please refer to catalog or website

\*FIXTURE HEAD ROTATES 360°



### WARNING

**To ensure a maximum efficient use of the product, read the instructions before proceeding installment.**



This fixture must be installed by a licensed and qualified electrician. The installer must comply with NEC and local building codes when installing the fixture



Electrical current can cause painful shock, serious injury, or even death. Make sure you turn off the power supply, ground fixture(s), and make sure all electrical connections are correct and secured tightly



For use in IP66 installations.



Keep the label of the original packaging if any eventual future claims are needed

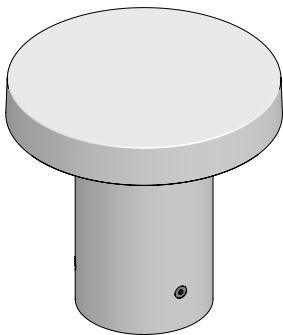
## Table of Contents

Packaging Contents / Dimensions  
Mounting Base Options  
Mounting Base Options Assembly  
Power Supply  
Maintenance / Support

Pg.2  
Pg.3  
Pg.4-7  
Pg.8  
Pg.9

Packaging Contents / Dimensions

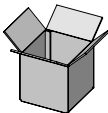
CHIOBO PATH  
CBPRP-



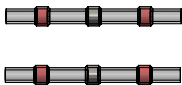
Pre-cabled with 25' Belden direct burial 18ga 2 conductor cable for connection to remote power supply.

FINISH

- Ferrite Dark Grey
- Black
- Bronze
- Sandstone Grey
- Heritage Brown
- White



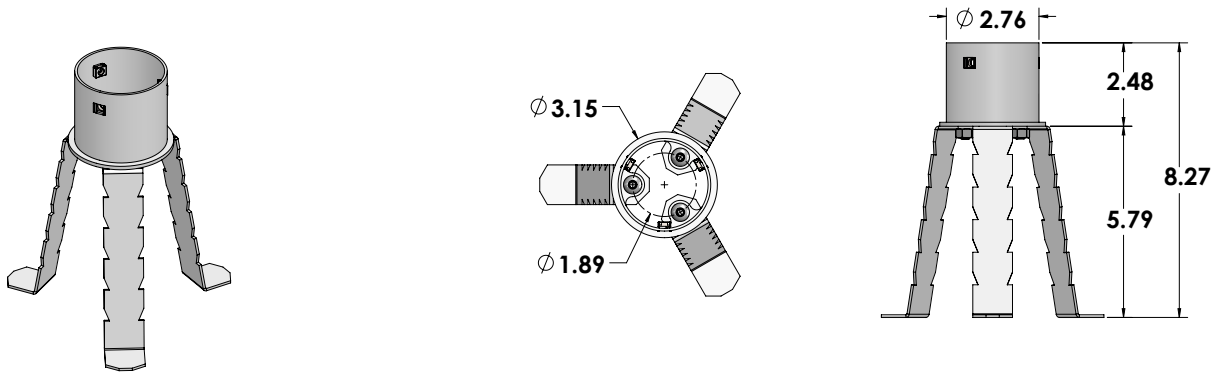
BOX 18" x 11" x 8" @ 3.2lbs



Connector Butt 22-18 AWG, 2ea

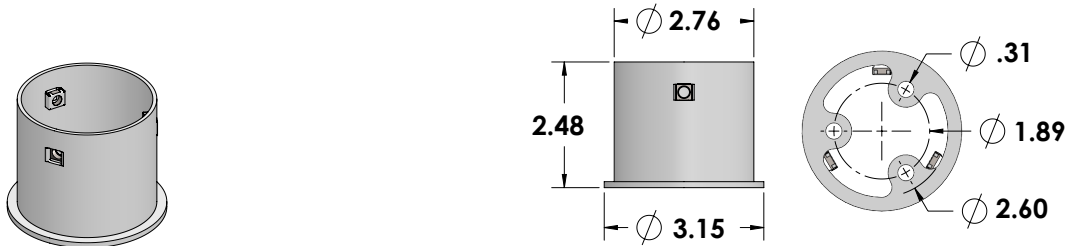
## Mounting Base (Sold Separately)

**1US4033**



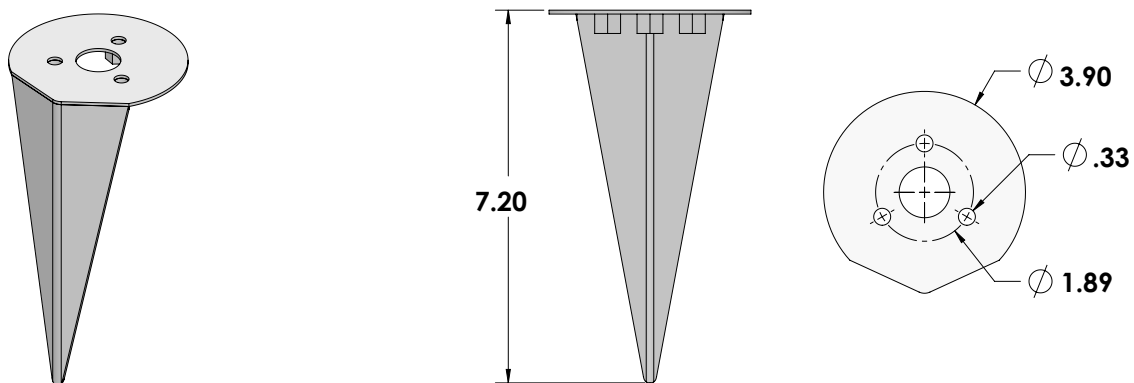
**Trimless mounting base** with ground anchor fixing rods for installation in concrete. AISI 316 stainless steel. Mounting bolts included. **Junction box provided by others.**

**1E4360(\*)**



**Trimless surface mounting base.** Powder coated AISI 316 stainless steel.

**1US3028(\*)**

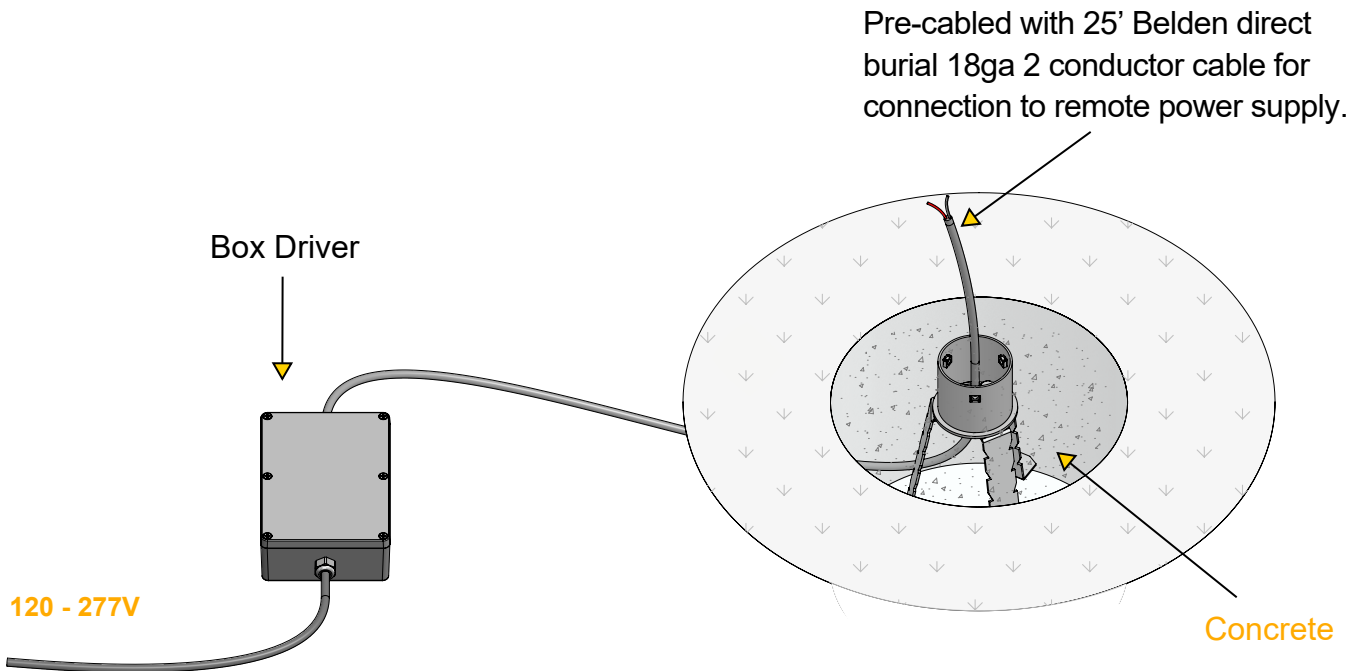
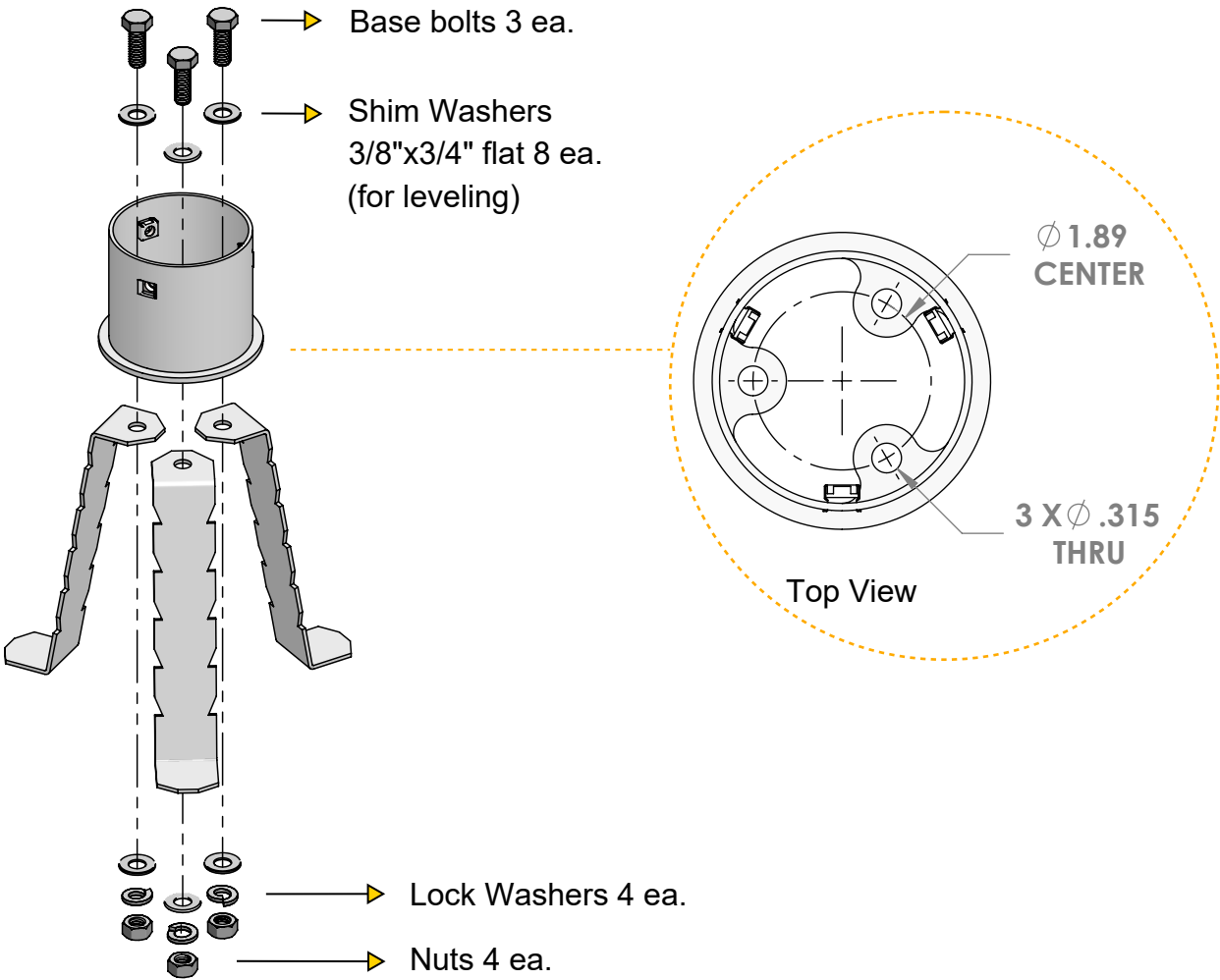


**Earth spike.** Powder coated stainless steel.

● Ferrite Dark Grey (Default) ● Heritage Brown (HB)\* ● Bronze (BZ)\* ● White (WT)\* ● Black (BT)\* ● Sandstone Grey (SG)\*

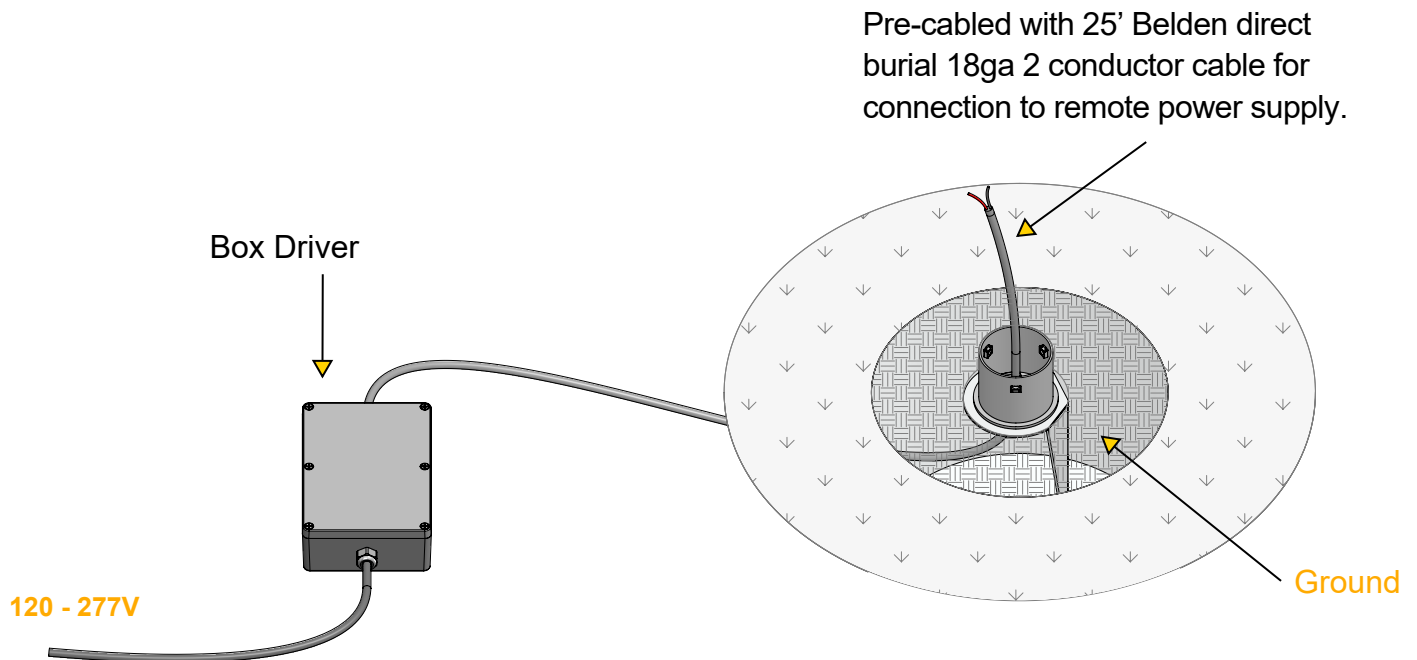
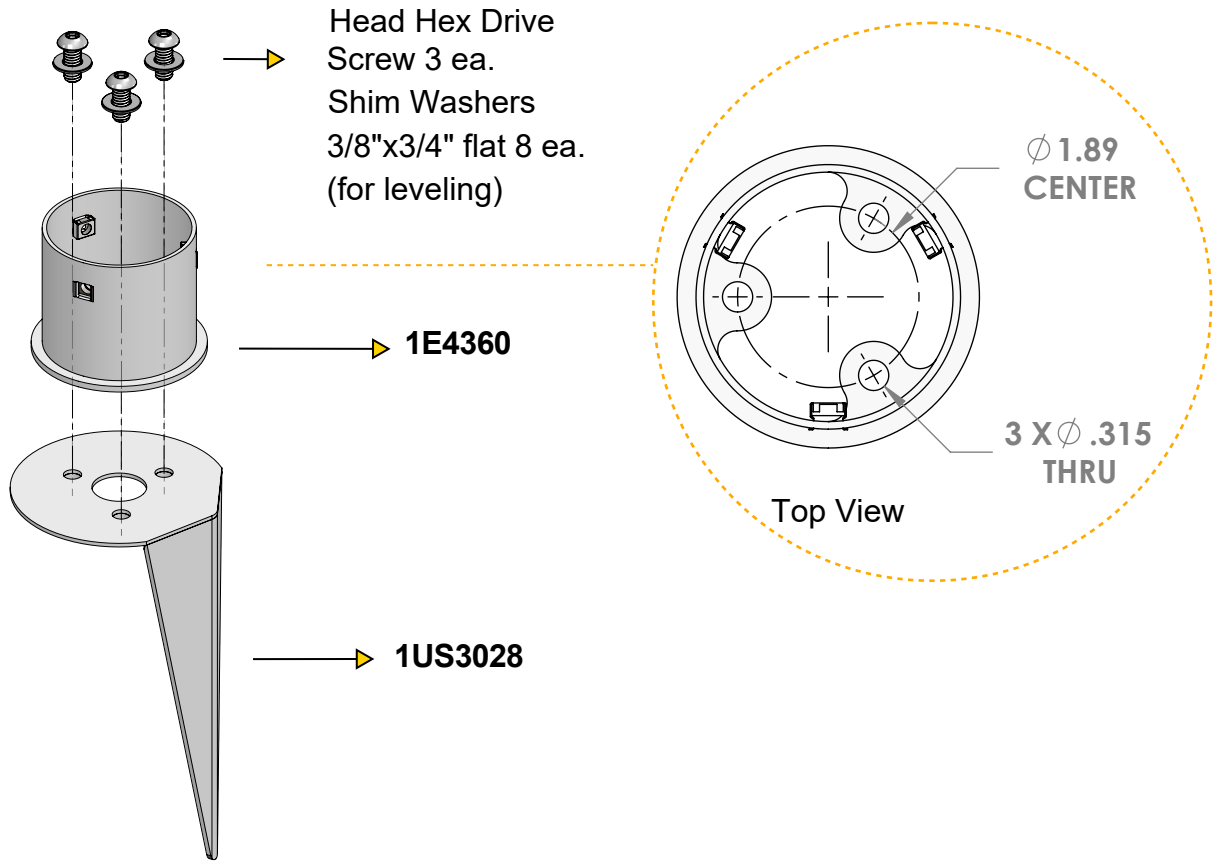
*\*Add suffix to end of number to identify finish (EX. 1US4035HB)*

# 1US4033 Mounting Base Installation



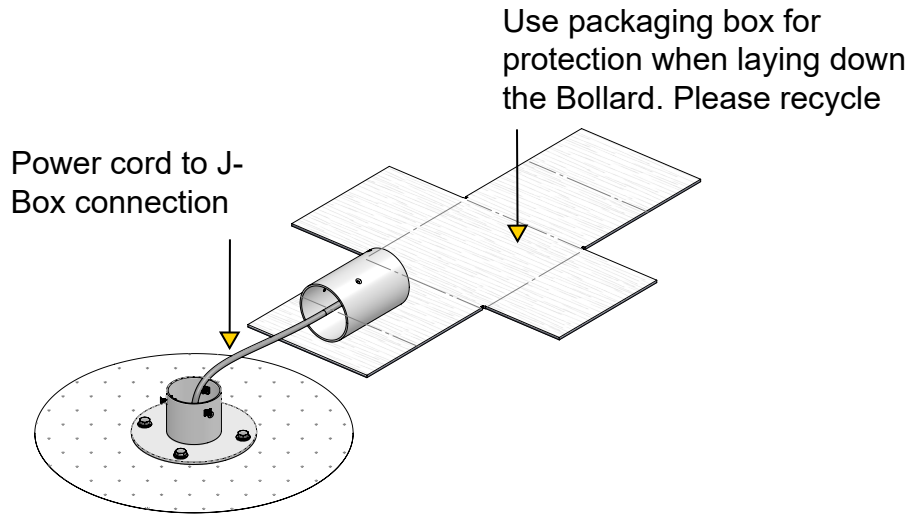
Stainless Steel base with rods on aggregated / compacted base  
for concrete pouring

# 1E4360 Trimless Surface Mounting Base and 1US3028 Earth Spike Installation



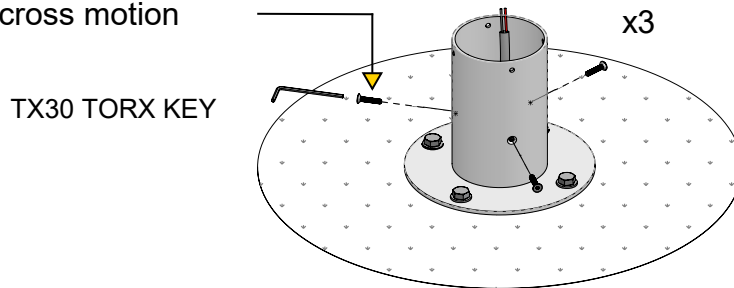
# Bollard / LED Fixture Head Assembly

## Step 1.



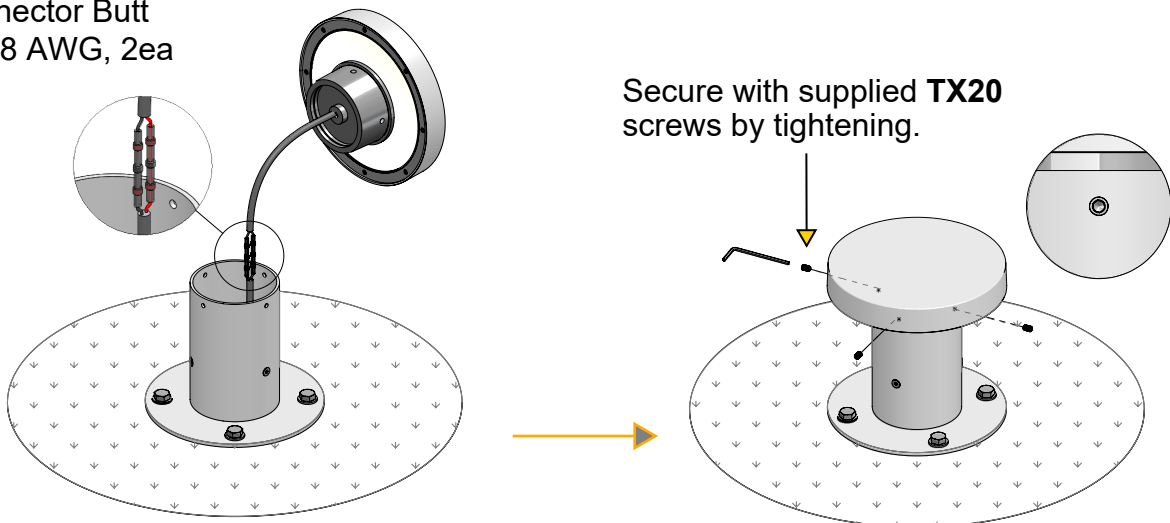
## Step 2.

Once Bollard is in position secure to base with 3 fixing screws and tighten on a crisscross motion



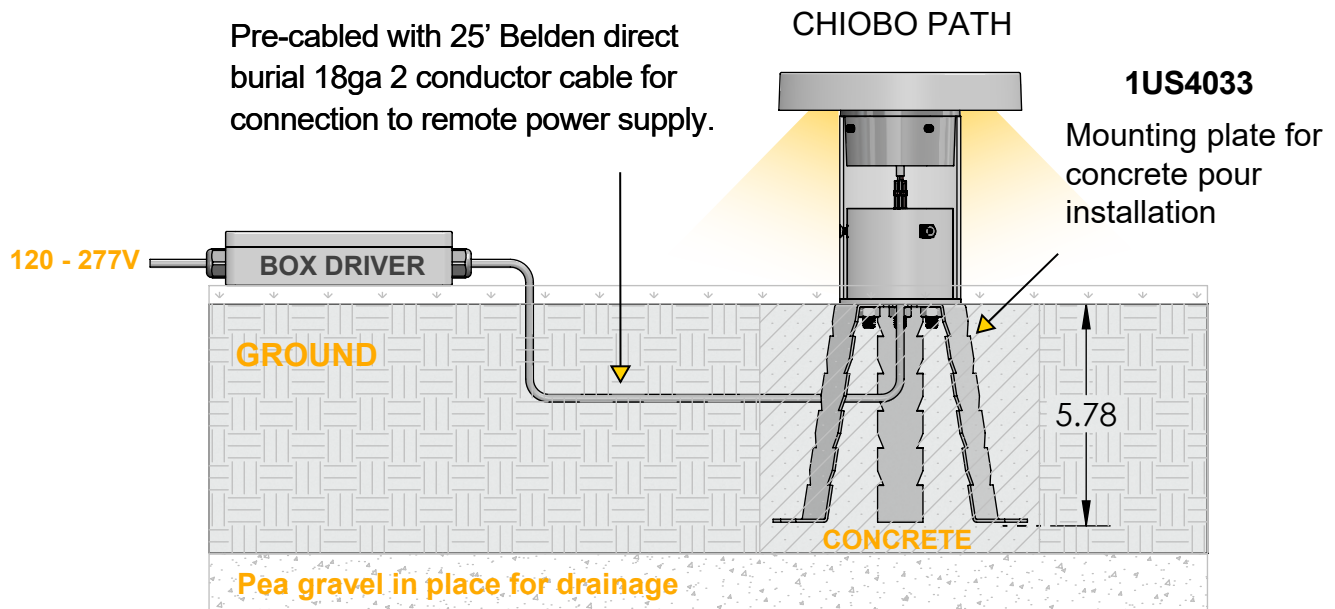
**Step 3.** Connect 25ft pre-cable into fixture's head with connector Butt 22-18 AWG. Once a secure connection has been made, insert fixture head into Bollard and rotate to desired illumination direction.

Connector Butt  
22-18 AWG, 2ea

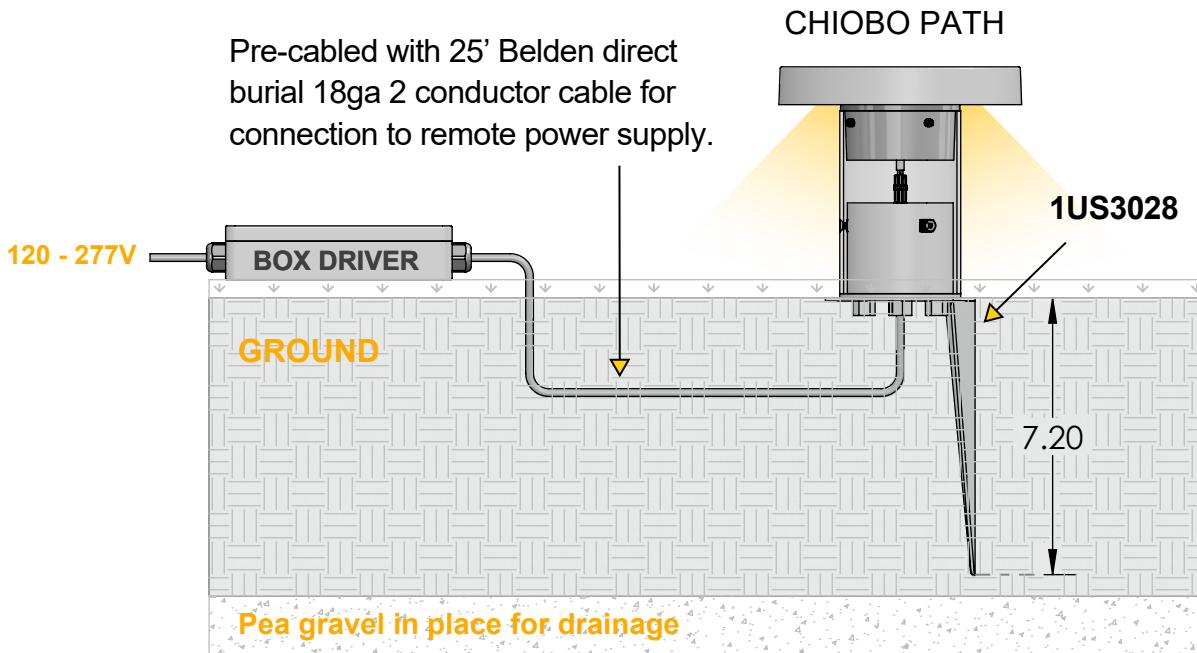


## Diagram

### Concrete Installation



### Surface Installation



# Power Supply (Required)

ENCLOSURE								
Part No.	Wattage	Control	Dim Range	Rating	In / Out Voltage	Certification	Dimensions (Enclosure)	Description
<b>DMLE301242UD</b>	30W	MLV / ELV / 0-10V / TRIAC	MLV <10% / ELV <10% / 0-10V <5%	NEMA3R	120-277V / 24V	UL Class 2	4.47" X 6.79" X 1.38"	EMCOD MLE-UD electronic driver with wiring compartment.
<b>DELV30124D JBX</b>	30W	0-10V	1%	IP65	120-277V / 24V	UL Class 2	12.1" X 2.4" X 1.4"	Magnitude SOLIDrive electronic driver with built in junction box.
<b>DMLE601242UD</b>	60W	MLV / ELV / 0-10V / TRIAC	MLV <10% / ELV <10% / 0-10V <5%	NEMA3R	120-277V / 24V	UL Class 2	4.47" X 6.79" X 1.38"	EMCOD MLE-UD electronic driver with wiring compartment.
<b>DELV60124DJBX</b>	60W	0-10V	1%	IP65	120-277V / 24V	UL Class 2	12.1" X 2.4" X 1.4"	Magnitude SOLIDrive electronic driver with built in junction box.
<b>DMLE961242UD</b>	96W	MLV / ELV / 0-10V / TRIAC	MLV <10% / ELV <10% / 0-10V <5%	NEMA3R	120-277V / 24V	UL Class 2	5.16" X 7.73" X 1.54"	EMCOD MLE-UD electronic driver with wiring compartment.
<b>DELV96124DJBX</b>	96W	0-10V	1%	IP65	120-277V / 24V	UL Class 2	12.1" X 2.4" X 1.4"	Magnitude SOLIDrive electronic driver with built in junction box.
<b>DMLE1922242UD</b>	2X96W	MLV / ELV / 0-10V / TRIAC	MLV <10% / ELV <10% / 0-10V <5%	NEMA3R	120-277V / 24V	UL Class 2	5.04" X 10.94" X 1.81"	EMCOD MLE-UD electronic driver with wiring compartment.
<b>DMLE2882242UD</b>	3X96W	MLV / ELV / 0-10V / TRIAC	MLV <10% / ELV <10% / 0-10V <5%	NEMA3R	120-277V / 24V	UL Class 2	5.04" X 10.94" X 1.81"	Magnitude SOLIDrive electronic driver with built in junction box.
STANDALONE								
Part No.	Wattage	Control	Dim Range	Rating	In / Out Voltage	Certification	Dimensions (Standalone)	Description
<b>DELV30124D</b>	30W	0-10V	1%	IP65	120-277V / 24V	UR Class 2	7.5" X 2.4" X 1.4"	Magnitude SOLIDrive electronic standalone driver. <b>UL listed enclosure provided by others.</b>
<b>DELV60124D</b>	60W	0-10V	1%	IP65	120-277V / 24V	UR Class 2	7.5" X 2.4" X 1.4"	Magnitude SOLIDrive electronic standalone driver. <b>UL listed enclosure provided by others.</b>
<b>DELV96124D</b>	96W	0-10V	1%	IP65	120-277V / 24V	UR Class 2	7.5" X 2.4" X 1.4"	Magnitude SOLIDrive electronic standalone driver. <b>UL listed enclosure provided by others.</b>

## MAX FIXTURES PER DRIVER

Fixture Wattage	Driver Wattage				
	30W	60W	96W	2X96W	3X96W
	10W	2	4	7	7+7
				7+7	7+7+7

**NOTE:** Install according to local and NEC building codes. UL listed j-box supplied by others.



---

## Maintenance

This fixture was designed and manufactured for a durable, long lasting use with minimum care. To ensure the maximum lifespan of this product, we encourage our customers to provide a quality visual inspection of the fixture and accessories every six months.

If there are any visible signs of issues (i.e moisture or dust) during the inspection, please clean any of the dust or moisture with a soft cloth to make sure that all fixtures are still operating normally. If there are any issues regarding the fixture please contact us as we will assist the situation at hand.

---

## Support

Any questions, problems, or comments you have please feel free to contact our Customer Service department during our business hours Monday-Friday 8am-5pm via: Email: [usaorders@targetti.com](mailto:usaorders@targetti.com)  
Phone: (714) 513-1991

Visit our website: <http://www.targettiusa.com>