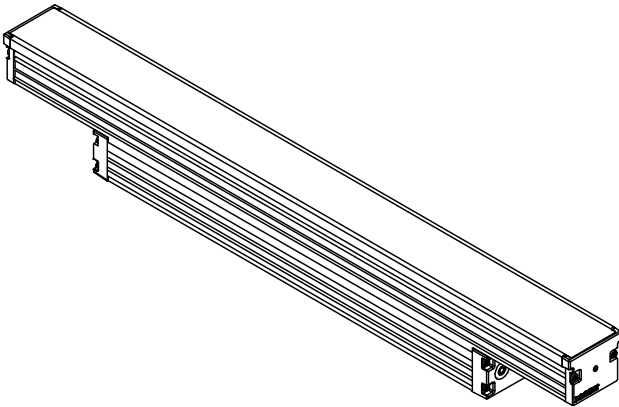




JEDI COMPACT PROJECTOR INTEGRAL

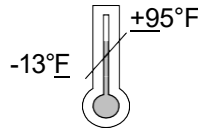
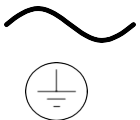
JECO-10-(WW), (WG), (FL), (SP)

JEDI COMPACT INTEGRAL (WALL WASH),
(WALL GRAZER), (FLOOD), (SPOT)



If in doubt about the symbols please
refer to catalog or website

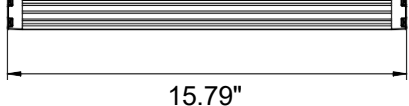
120-277 VAC



22.68"



15.79"



5.73 lbs

44.73"



37.83"



WARNING

**To ensure a maximum efficient use
of the product, read the instructions
before proceeding installment.**



This fixture must be installed by a licensed and
qualified electrician. The installer must comply with
NEC and local building codes when installing the
fixture



Electrical current can cause painful shock, serious
injury, or even death. Make sure you turn off the
power supply, ground fixture(s), and make sure all
electrical connections are correct and secured
tightly

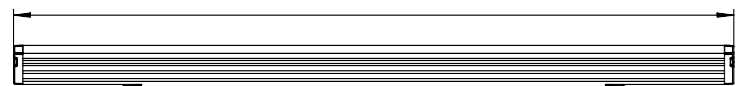


For use in IP67 installations

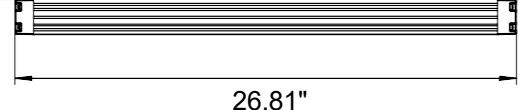


Keep the label of the original packaging if any
eventual future claims are needed

33.70"

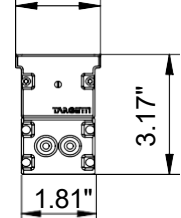


26.81"



7.94 lbs

2.09"



9.92 lbs

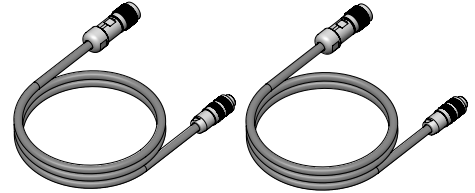
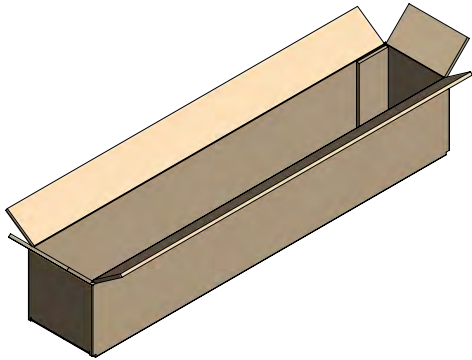
Table of Contents

Packaging Contents / Cabling	Pg.2
JEDI Compact Projector Cabling Types	Pg.3
Required Mounting / Mounting Installation	Pg.4-13
Lead Cable and Jumpers	Pg.14
Power Connection Instructions	Pg.15
Electrical Roughin / Perma-Post Mounting Instructions	Pg.16-17
Maintenance / Support	Pg.18

Packaging Contents

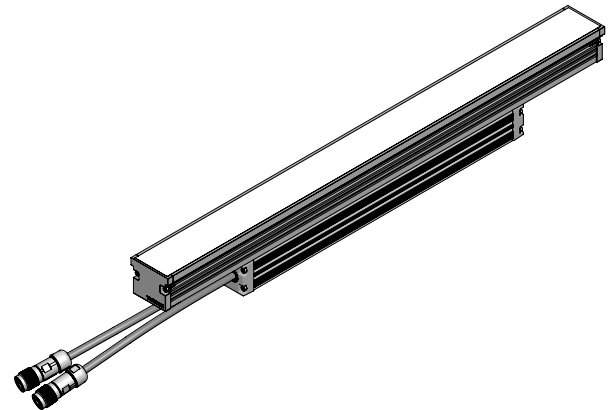
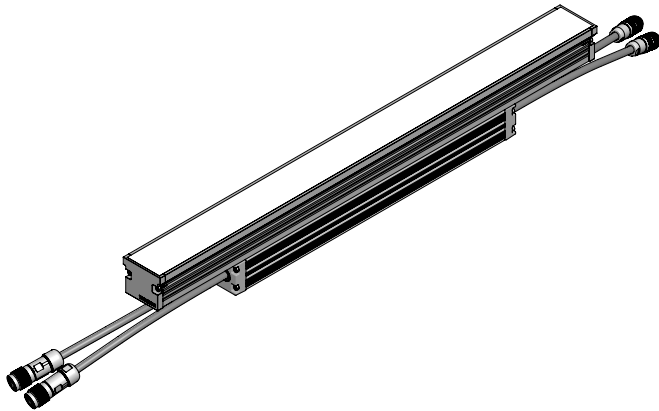
24" Fixture in 26"x6"x5" Box @4.1 lbs
36" Fixture in 38"x6"x5" Box @5.5 lbs
48" Fixture in 50"x6"x5" Box @7.6 lbs

120v Lead and Low Voltage Lead
cables included with each Lead
and Solo fixtures 1 ea.



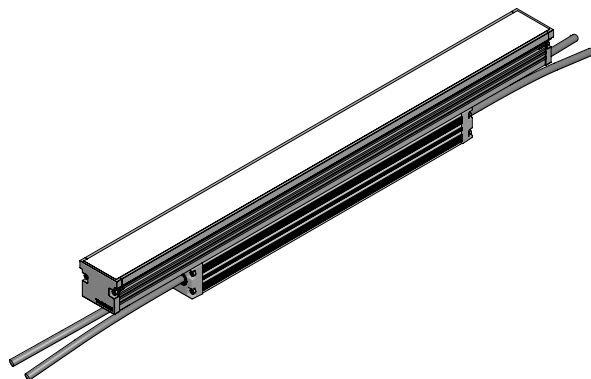
LEAD / CENTER FIXTURE 1 ea.

END / SOLO FIXTURE 1 ea.



PERMA-POST FIXTURE

**PERMA-POST CONECTOR KIT 2 ea.
KITS PER FIXTURE**



IP68 FIELD CONNECTOR

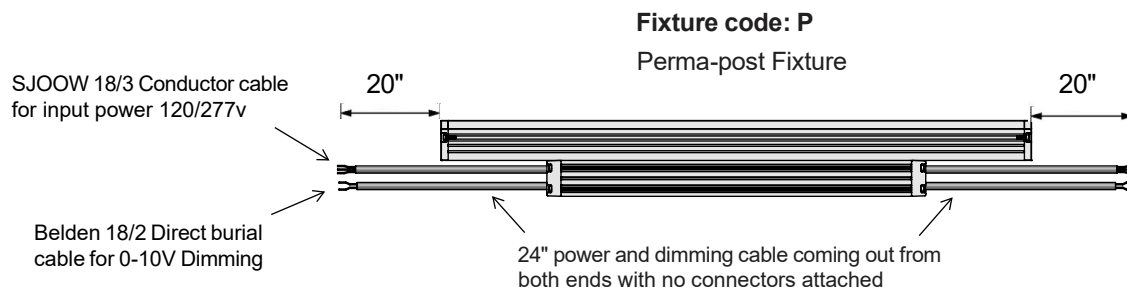
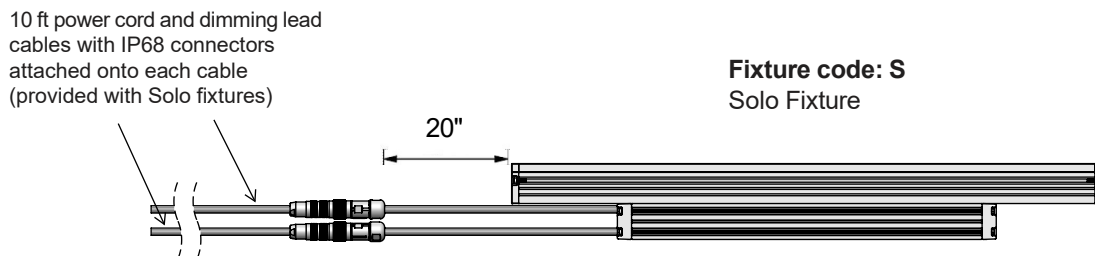
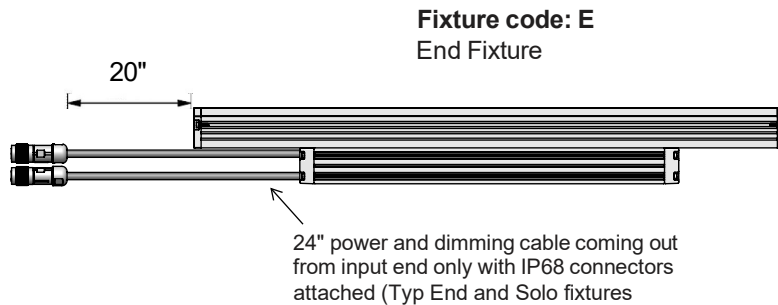
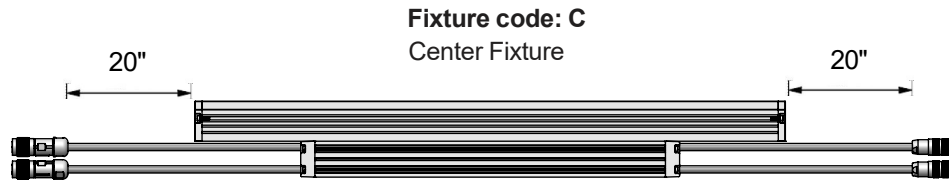
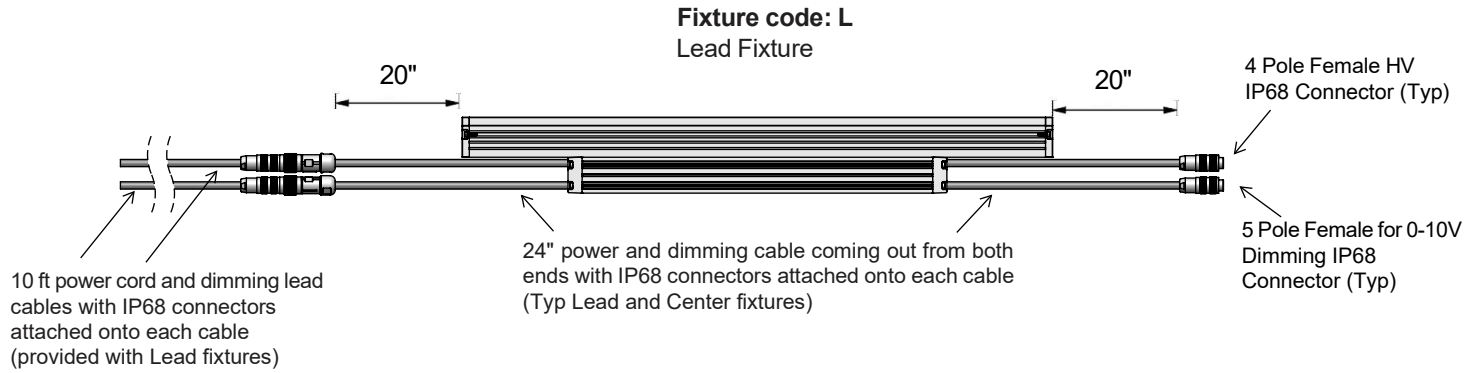


HEAT-SHRINK CRIMP
SPLICE



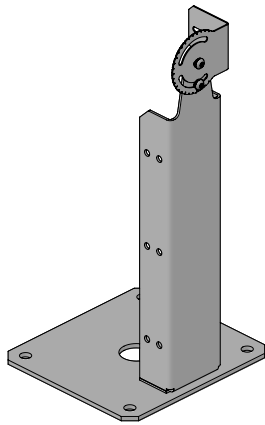
4" HEAT-SHRINK TUBE

JEDI Compact Projector Cabling Types

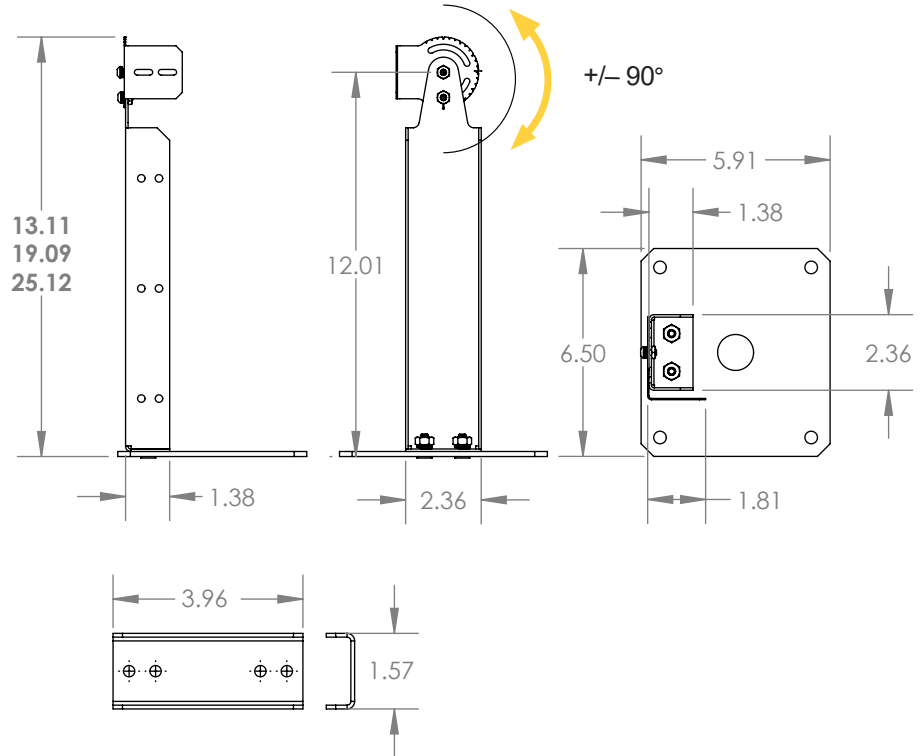


Required Mounting Sold Separately

Mounting Bracket Dimensions

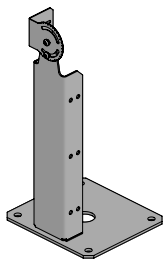


(2EA. ARMS PER KIT)

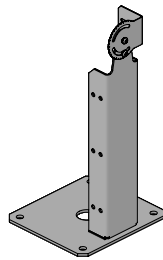


(1EA. JOINING BRACKET PER KIT)

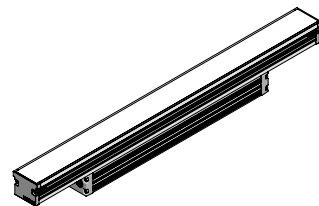
Jedi CMP Mounting Bracket (2ea.) for one fixture installation



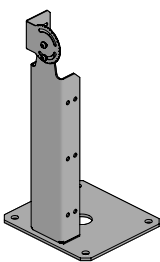
+



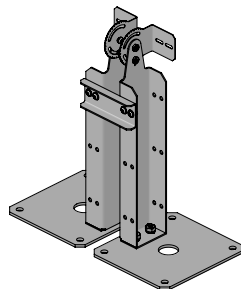
+



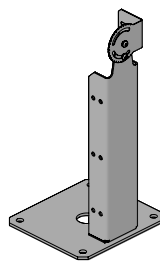
Jedi CMP Mounting Bracket (4ea.) and Connect Bracket (1ea.) for two fixtures installation



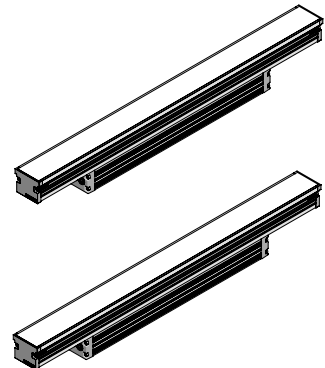
+



+

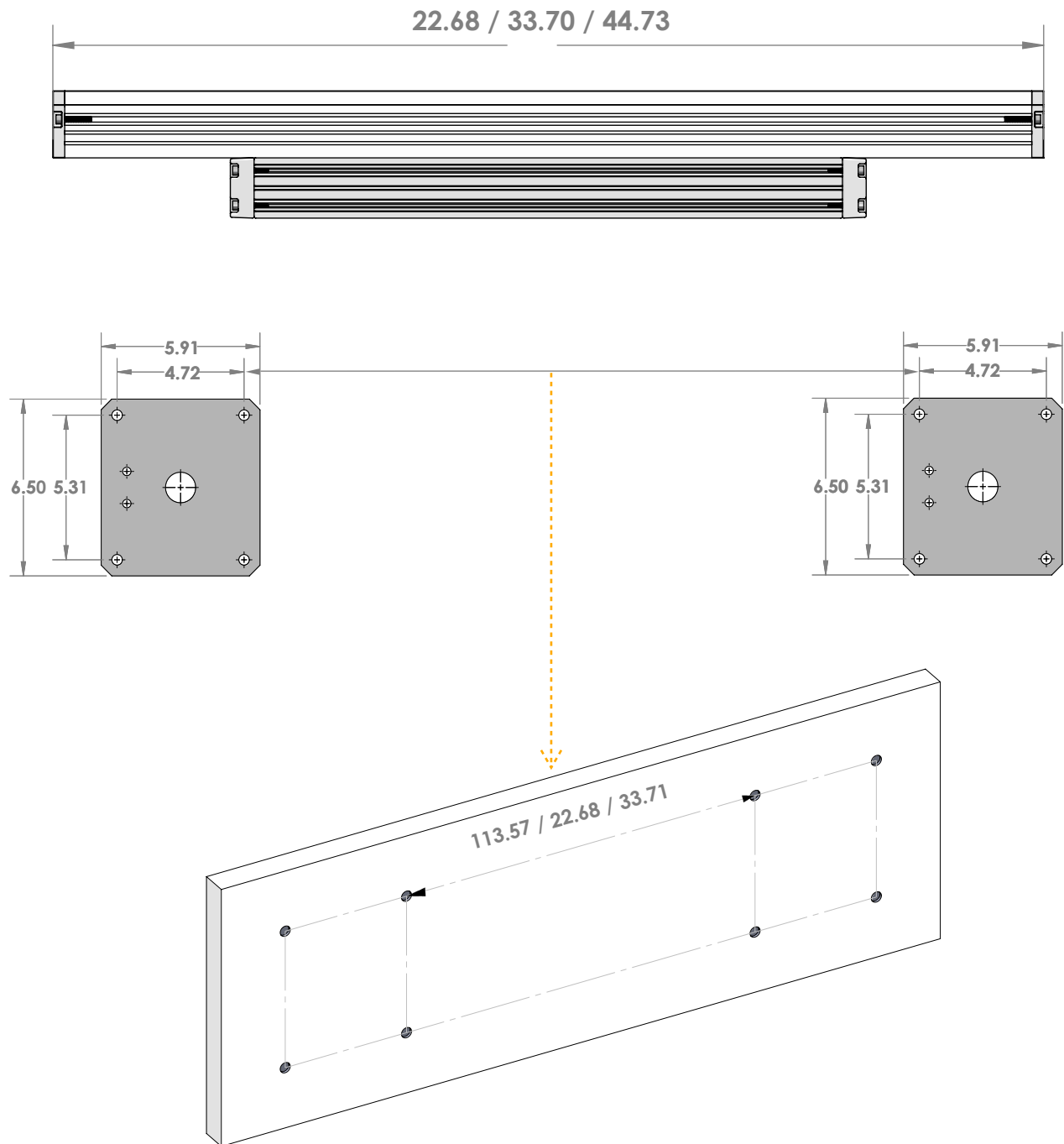


+

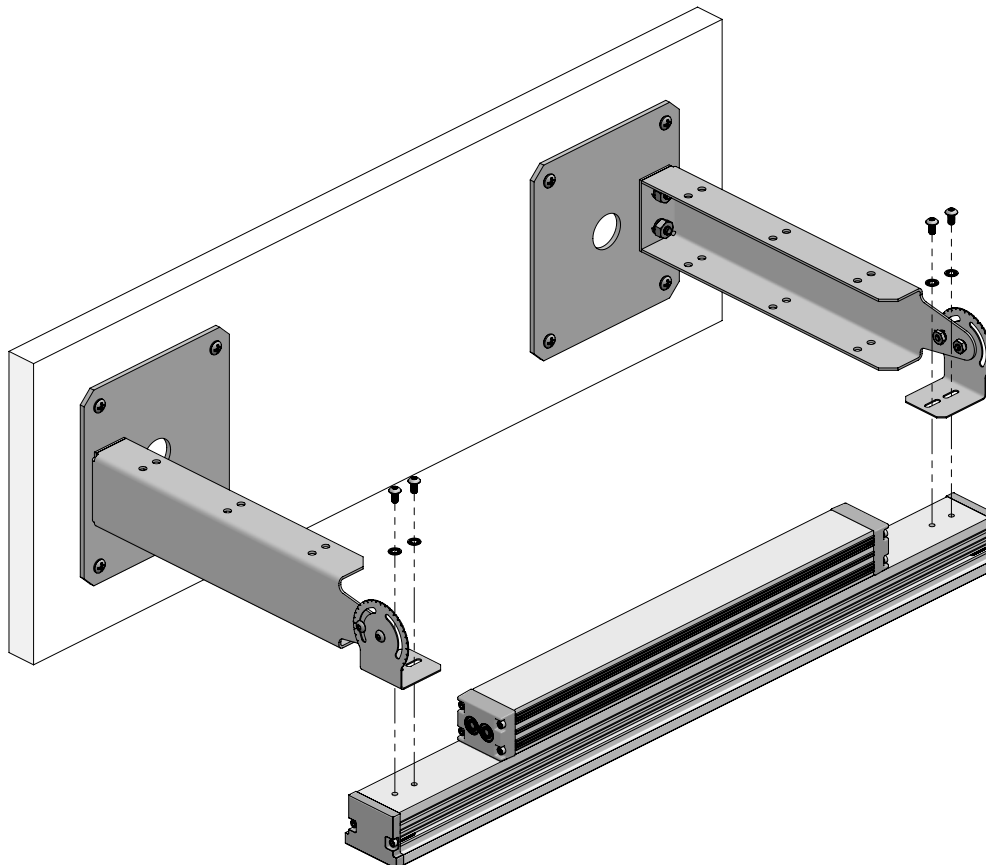
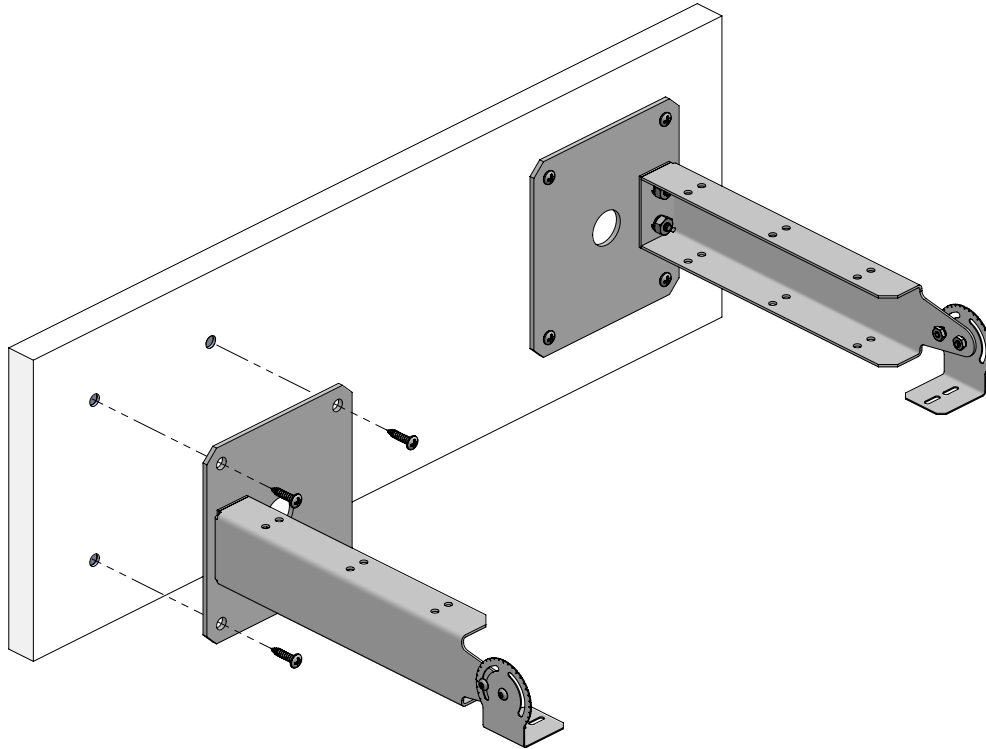


Mounting Installation

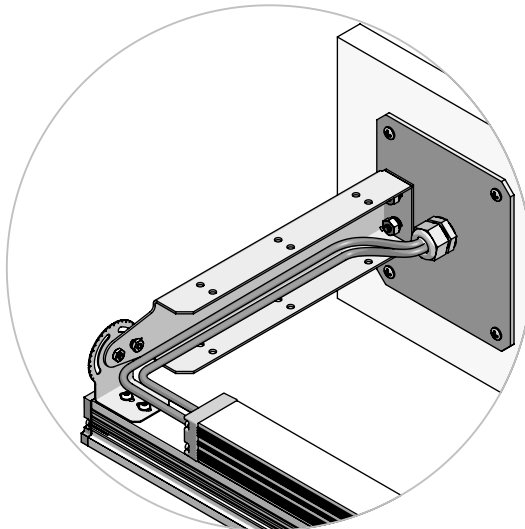
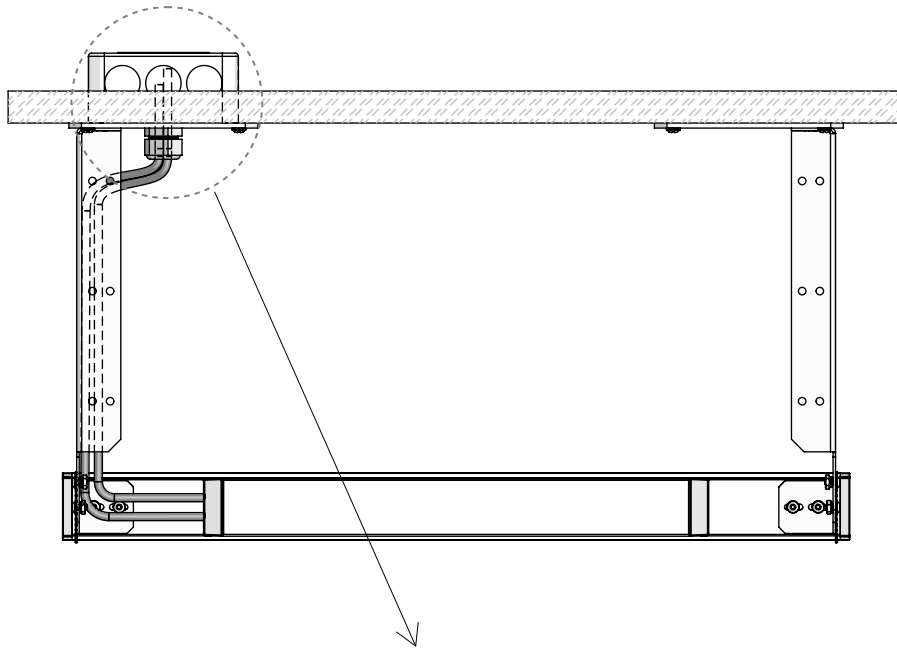
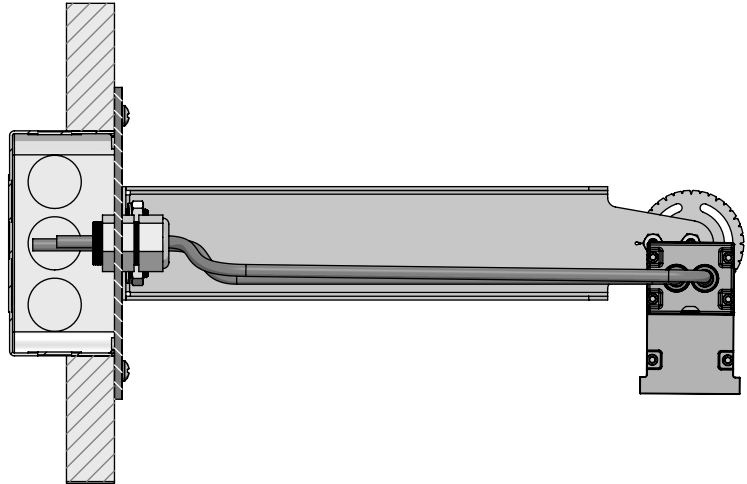
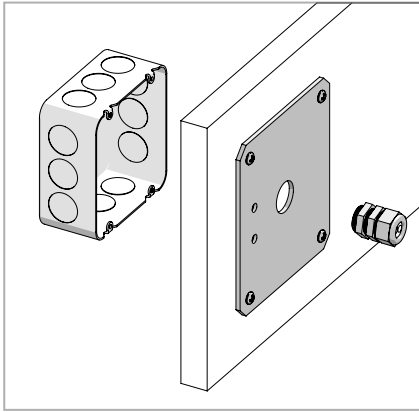
With One Fixture



Mounting Installation Cont.

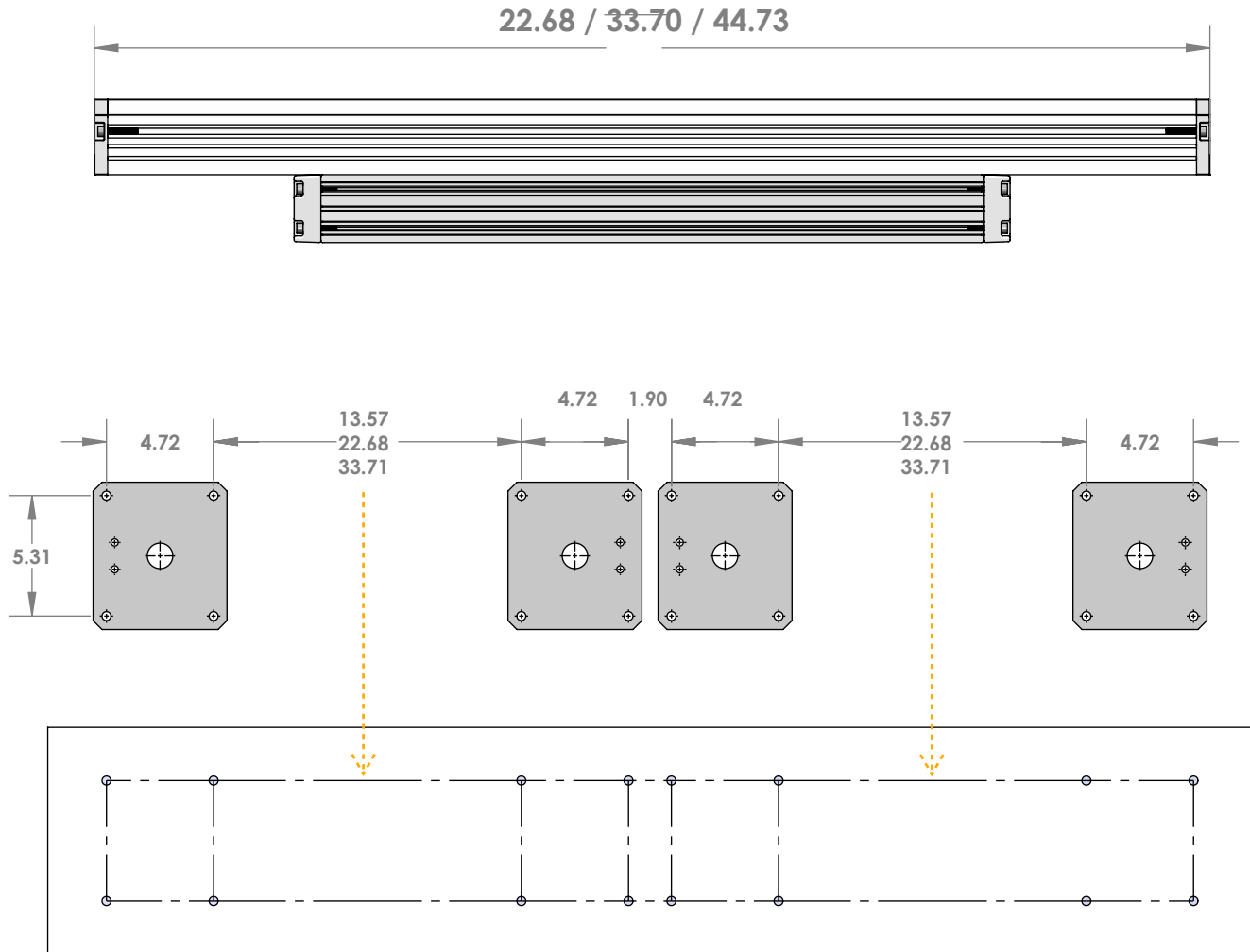


Mounting and J-Box Installation Cont.

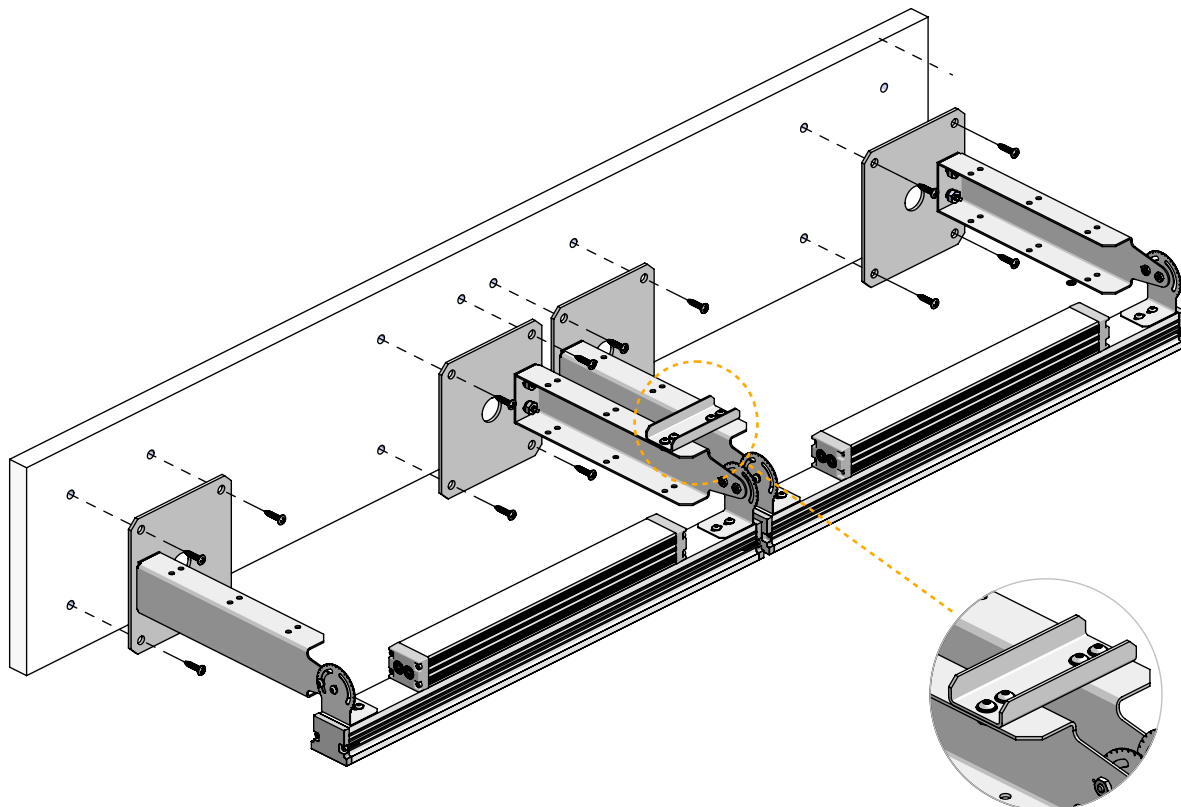
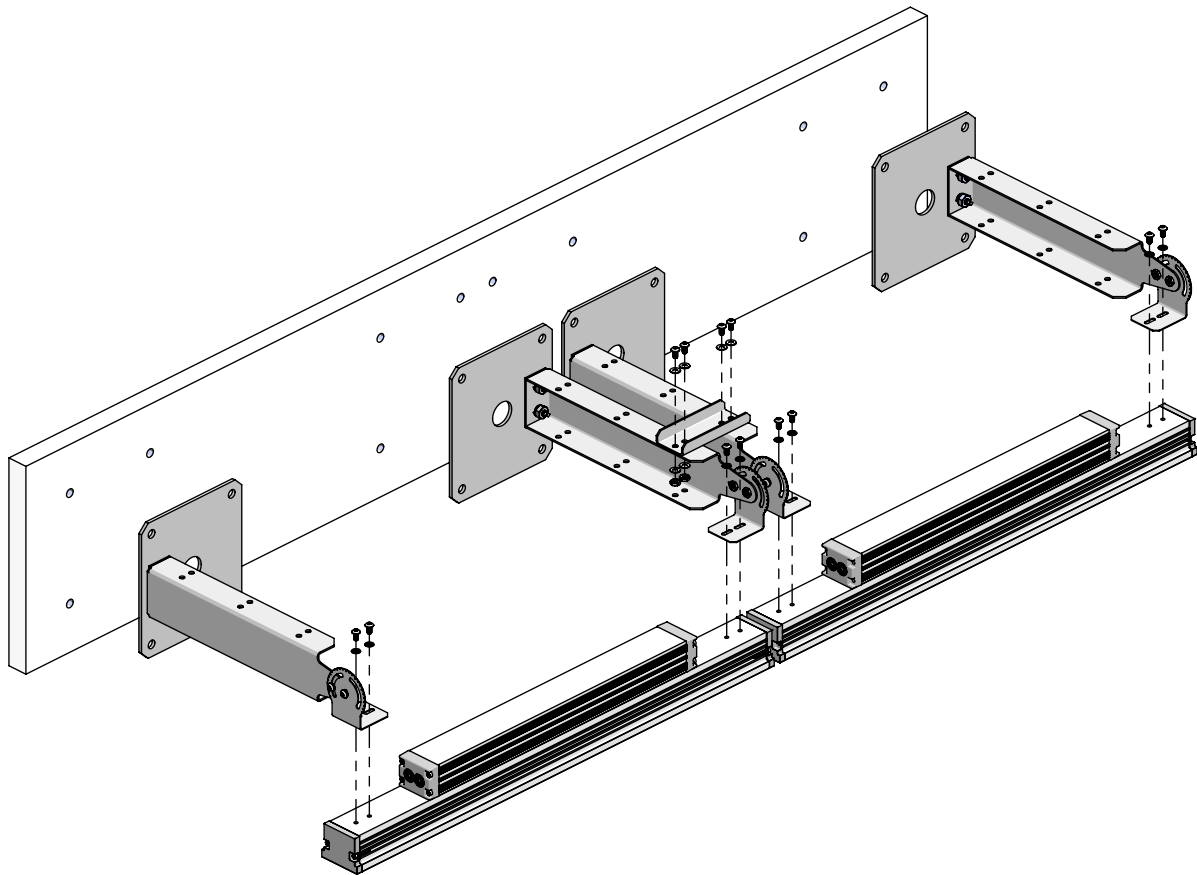


Mounting Installation Cont.

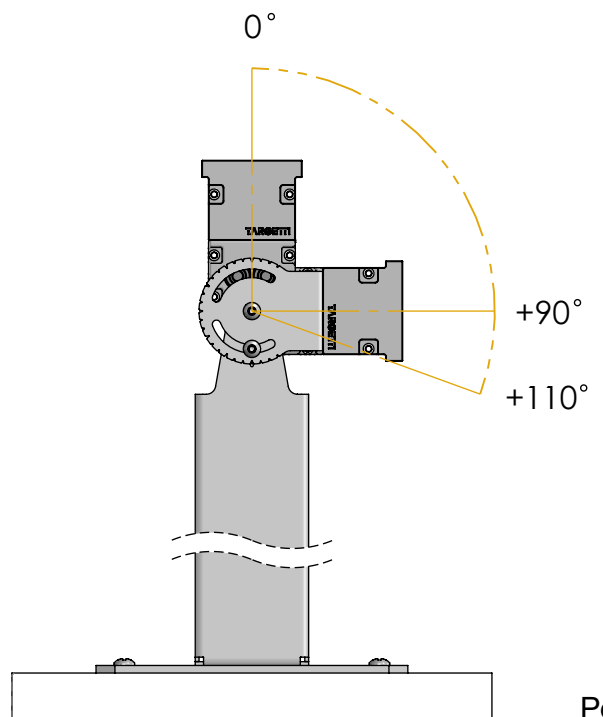
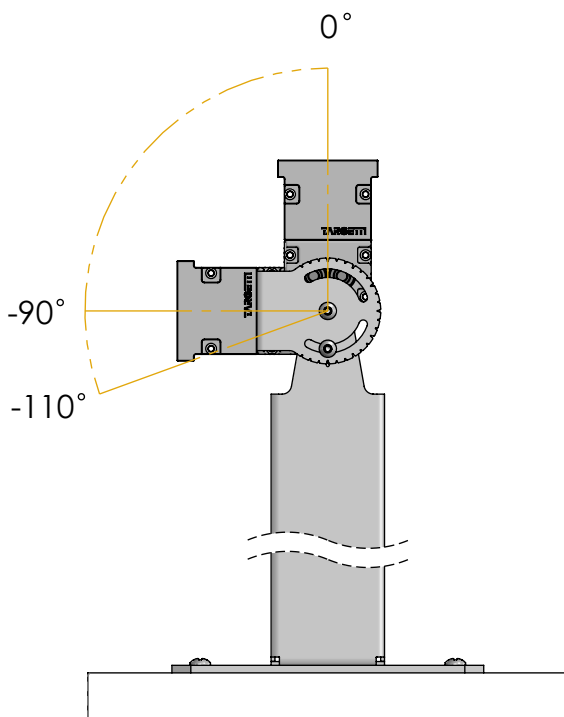
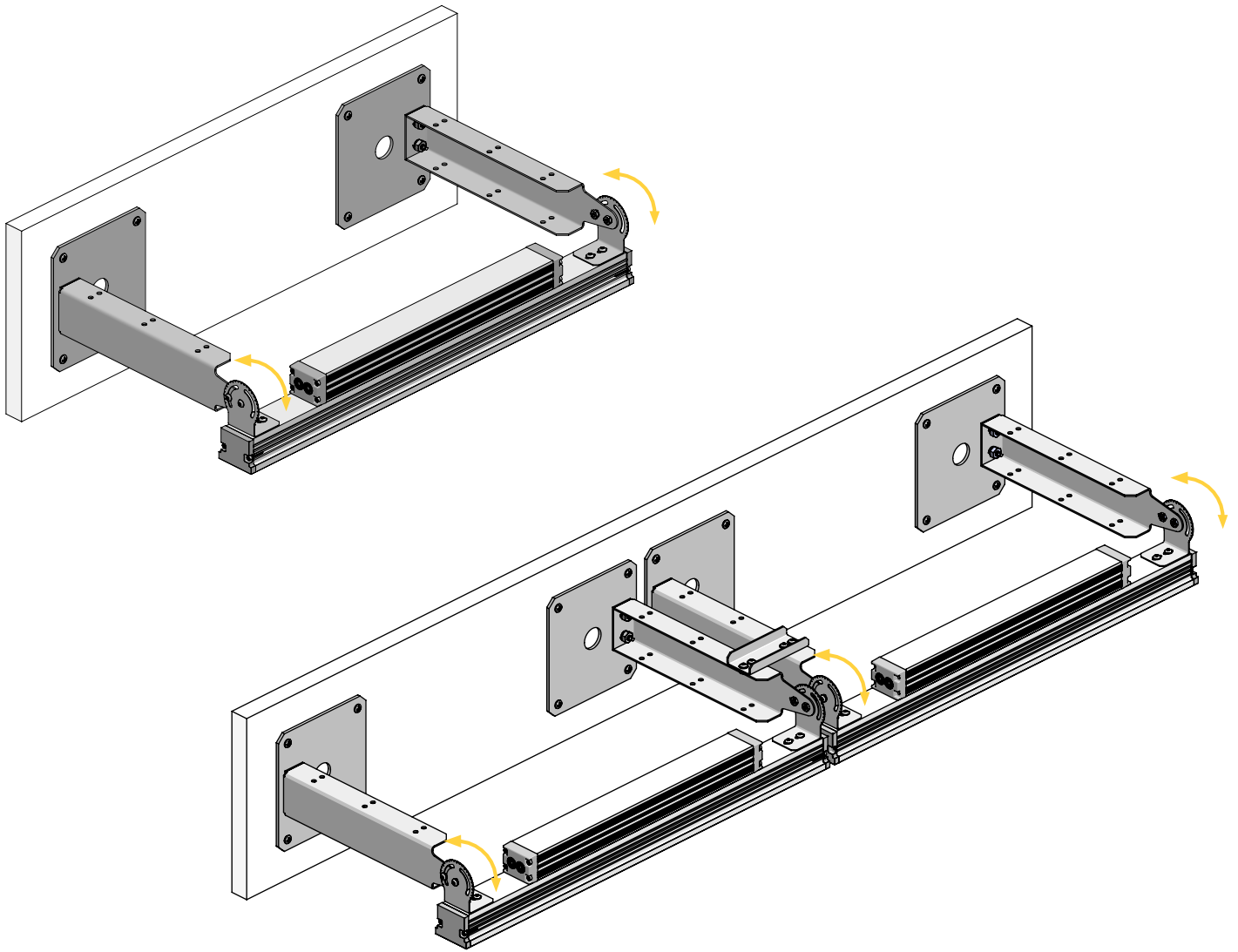
With Two Fixtures



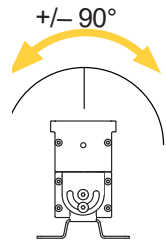
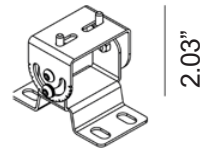
Mounting Installation Cont.



ADJUSTMENT

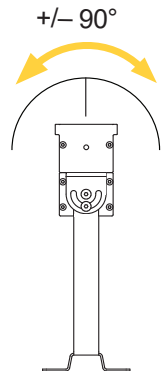
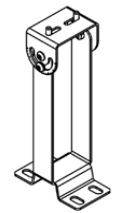


Required Mounting Sold Separately



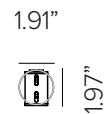
JEDI COMPACT short stainless steel mounting bracket for surface installation (2pcs).

Part No. **1E3304**



JEDI COMPACT long stainless steel mounting bracket for surface installation (2pcs).

Part No. **1E3306**



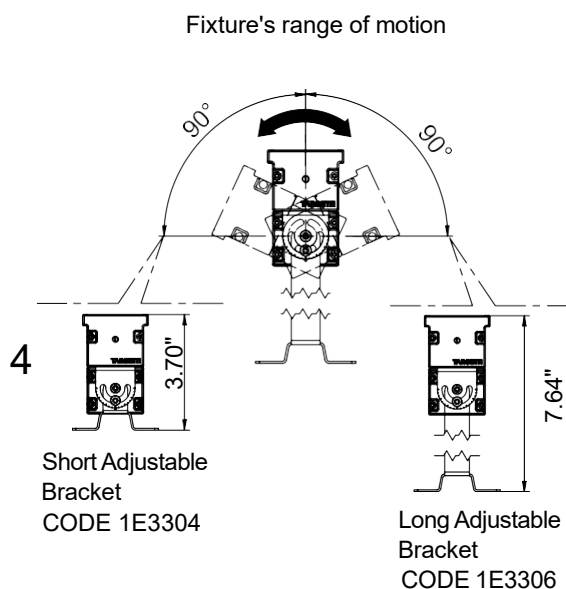
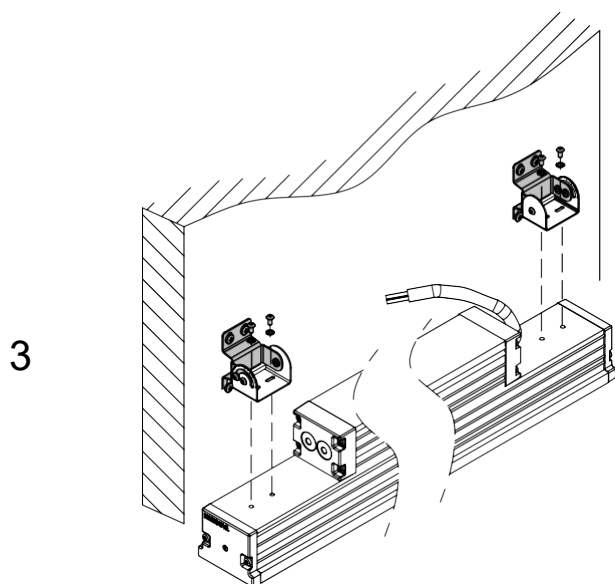
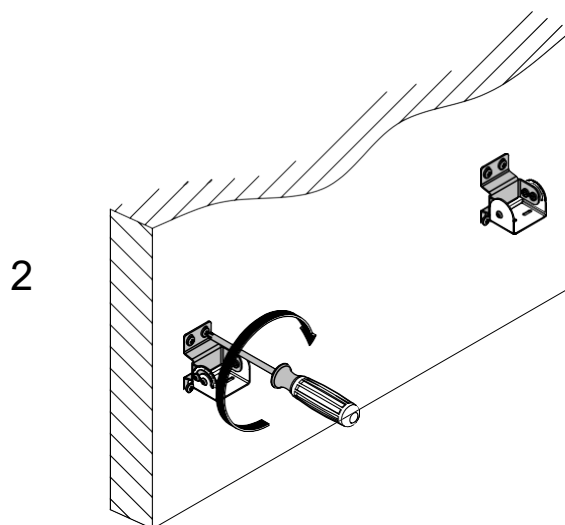
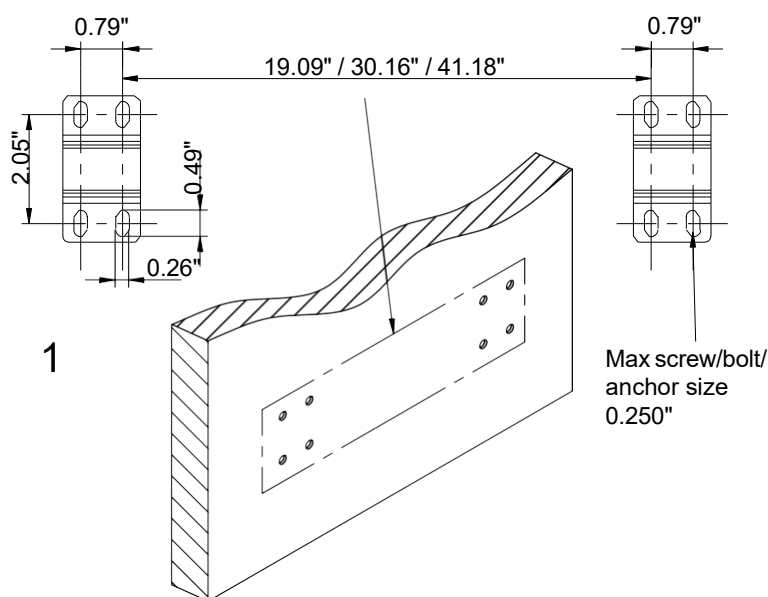
EDI COMPACT aluminum permapost with stainless steel long mounting bracket (2pcs) and (2pcs) stabilizers.

Finish  Deep Black

Part **JECOPP24**

Mounting Bracket Instructions

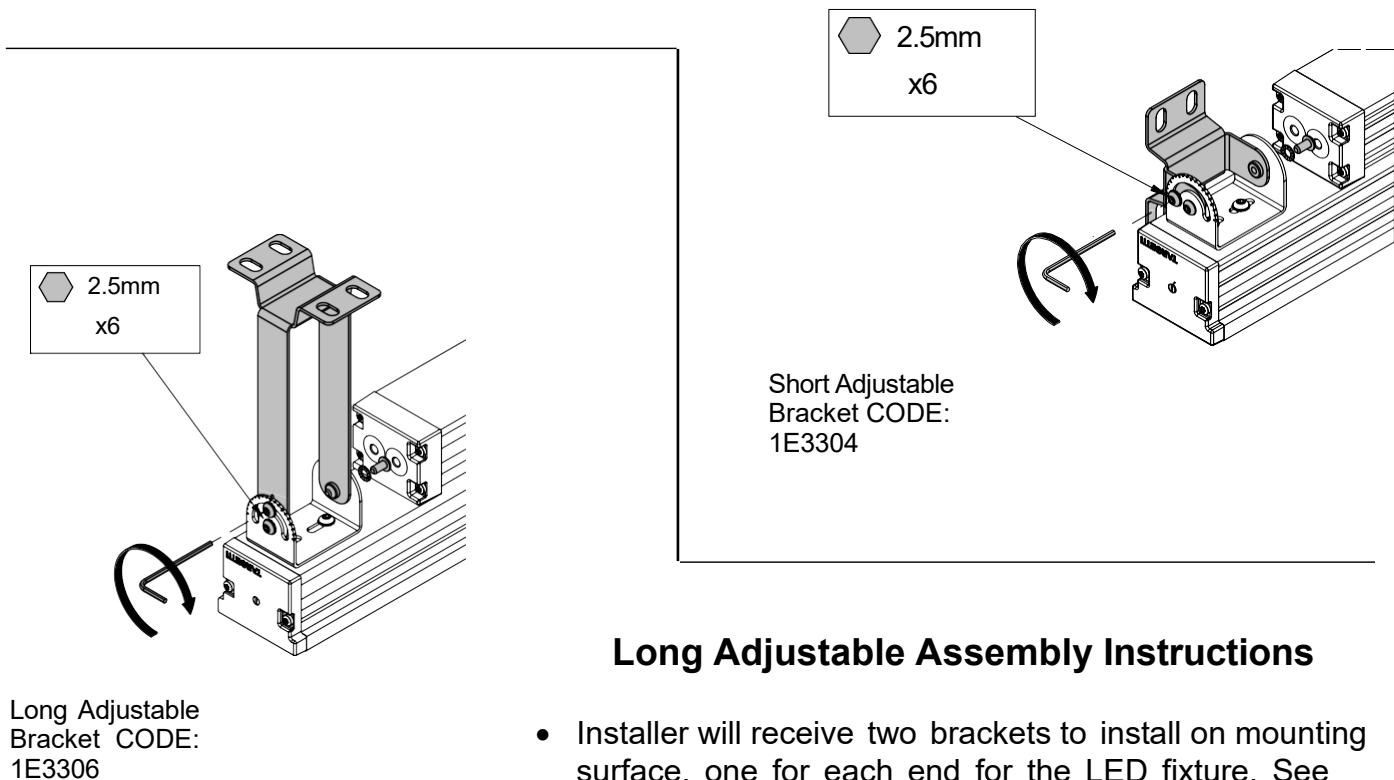
- Warning: For safety purposes, **DO NOT MOUNT FIXTURE BY YOURSELF**. These fixtures should be installed with at least a team of 2 qualified installers
- Fixture comes with 2 different types of mounting brackets either short or long brackets
 - Short Adjustable CODE 1E3304 2.3"
 - Long Adjustable CODE 1E3306 5.96"
- The brackets will have to be level and installed on the mounting surface with a gap between the two brackets based on the size of the fixture. See Image #1. Once the gap between the brackets has been properly measured and the brackets have been leveled, use the appropriate fasteners or anchors to mount brackets onto mounting surface. (use correct screw size or anchor based on surface material).
- Place the LED fixture on the mounting brackets (previously installed) and screw the fixture on to the bracket, then lock the mounting bracket depending on desired aiming of the fixture. This fixture has a vertical range of motion of +/- 90 degrees for a wide range of light distribution.



Mounting Bracket Instructions

Short Adjustable Assembly Instructions

- Installer will receive two brackets to install on mounting surface, one for each end for the LED fixture. See image #1 on page 5 for reference.
- This next step requires 2 installers, 1 to hold the fixture on position, the second installer to screw in the fixture onto the bracket.
- Lastly, adjust the aiming of the light to desired angle using the bracket adjustable screws and tighten to secure.



Long Adjustable Assembly Instructions

- Installer will receive two brackets to install on mounting surface, one for each end for the LED fixture. See image #1 on page 5 for reference.
- This next step requires 2 installers, 1 to hold the fixture on position, the second installer to screw in the fixture onto the bracket.
- Lastly, adjust the aiming of the light to desired angle using the bracket adjustable screws and tighten to secure.

Lead Cable and Jumpers

OPTIONAL Longer Lead Cable Sets

Lead cable sets include:

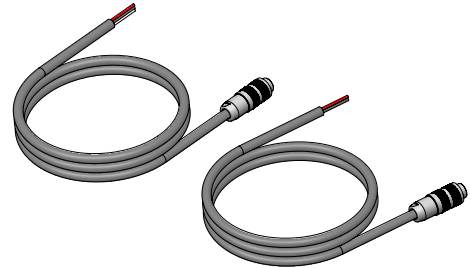
1 ea. SJOOW Power cable with female 4 pole IP68 Quick disconnect at end.

1 ea. 18-2 direct burial dimming cable with female 5 pole IP68 quick disconnect at end

*Optional longer lead cable sets replace! standard 10ft. leads sets provided with Lead and Solo Type fixtures.

JEC10LEAD-25

25ft. 16 Ga. Power with 25ft. 18 Ga. Dimming



OPTIONAL Jumper Cables Sets

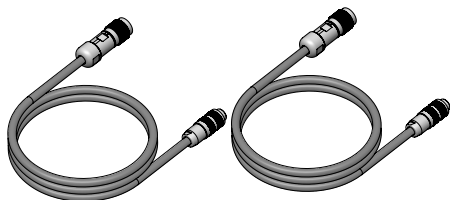
Jumper Cable Sets include:

1 ea. SJOOW Power Cable with male/female 4 pole IP68 Quick disconnect

1 ea. 18-2 direct burial dimming cable with male/female 5 pole IP68 Quick disconnect.

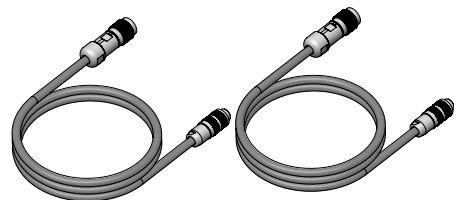
JEC10JUMP-05

5ft. 18 Ga. Power with 5ft. 18 Ga. Dimming



JEC10JUMP-10

10ft. 16 Ga. Power with 10ft. 18 Ga. Dimming



Power Connection Instructions

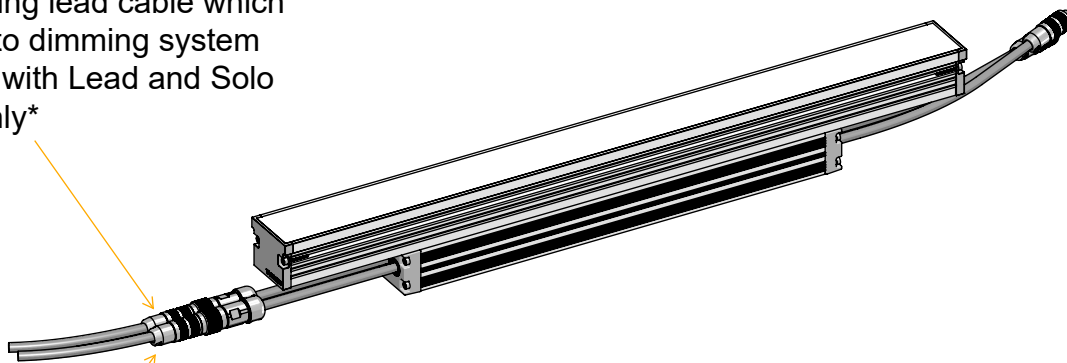
- Lead power cable coming from J-Box connects direct to Lead fixture input connector.
- For multiple fixtures be sure to arrange the fixtures in the correct order before connecting. Jumper cables (ordered separately) are used to interconnect multiple fixtures in a linear connection depending on how the fixtures' layout. Fixtures can be directly connected in a line if fixtures are laid out end to end.
- Jumper cables and fixtures ordered are labeled to provide the specific position of the fixtures and the jumper cable connectors position. **Maximum power consumption of multiple fixtures on one line is 8 Amps.**

10ft dimming lead cable which connects to dimming system

Supplied with Lead and Solo fixtures only

10-foot power lead cable which connects to nearest remote wiring box. (Provided by others)

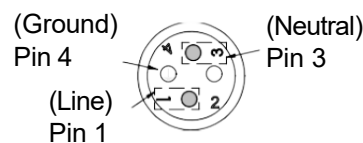
Supplied with Lead and Solo fixtures only



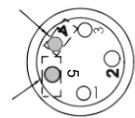
Connector Pin Callouts

4 pin: Power cable

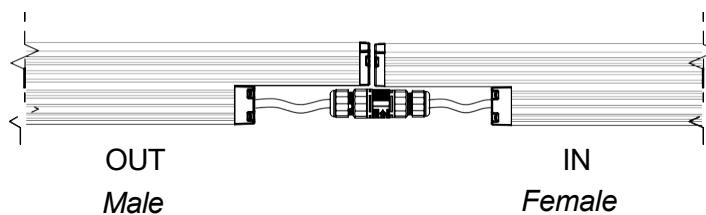
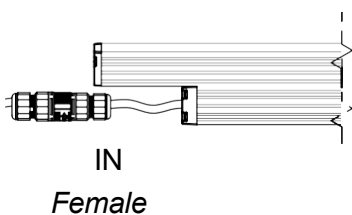
5 pin: 0 - 10V dimming



Dim (+)
Pin 4
Dim (-)
Pin 5



*Connectors can be removed and attached in field for maintenance or shortening of cable if needed.

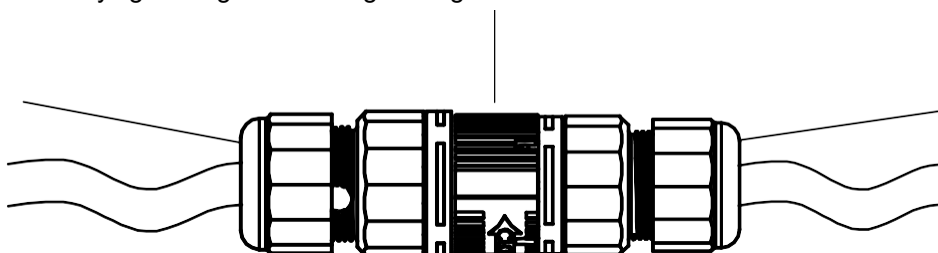


IN
Female

OUT
Male

Secured by tightening the lock ring turning it to "close" direction to ensure a sealed connection.

After tightening the lock ring, be sure to double check and tighten end of connectors



After tightening the lock ring, be sure to double check and tighten end of connectors

Electrical Roughin

- For each individual run we recommend that the electrical J-Box is positioned within 10ft. away from lead fixture for use with standard 10ft. leads. Each Lead and Solo fixtures are supplied with a 10ft. lead for 120-277V Input and a 10ft. lead for 0-10V Dimming.
- Lead lengths can be ordered longer at 25ft. or 50ft. if connection to main power requires.
- If the source is 120V, max of 14 each 4-foot fixtures (50 feet of fixture illumination) on a single home run allowed.
- If the source is 277V, max of 35 each 4-foot fixtures (140 feet of fixture illumination) on a single home run allowed.
- Please see chart below for detailed information on max run lengths per circuit.

Voltage Drop Table

Voltage drop calculations are based on 10% max drop to last fixture in run for load and distances below

Length in Fixtures	Load	Power
Up to 56 ft.	742W	120V
Up to 140 ft.	1855W	277V

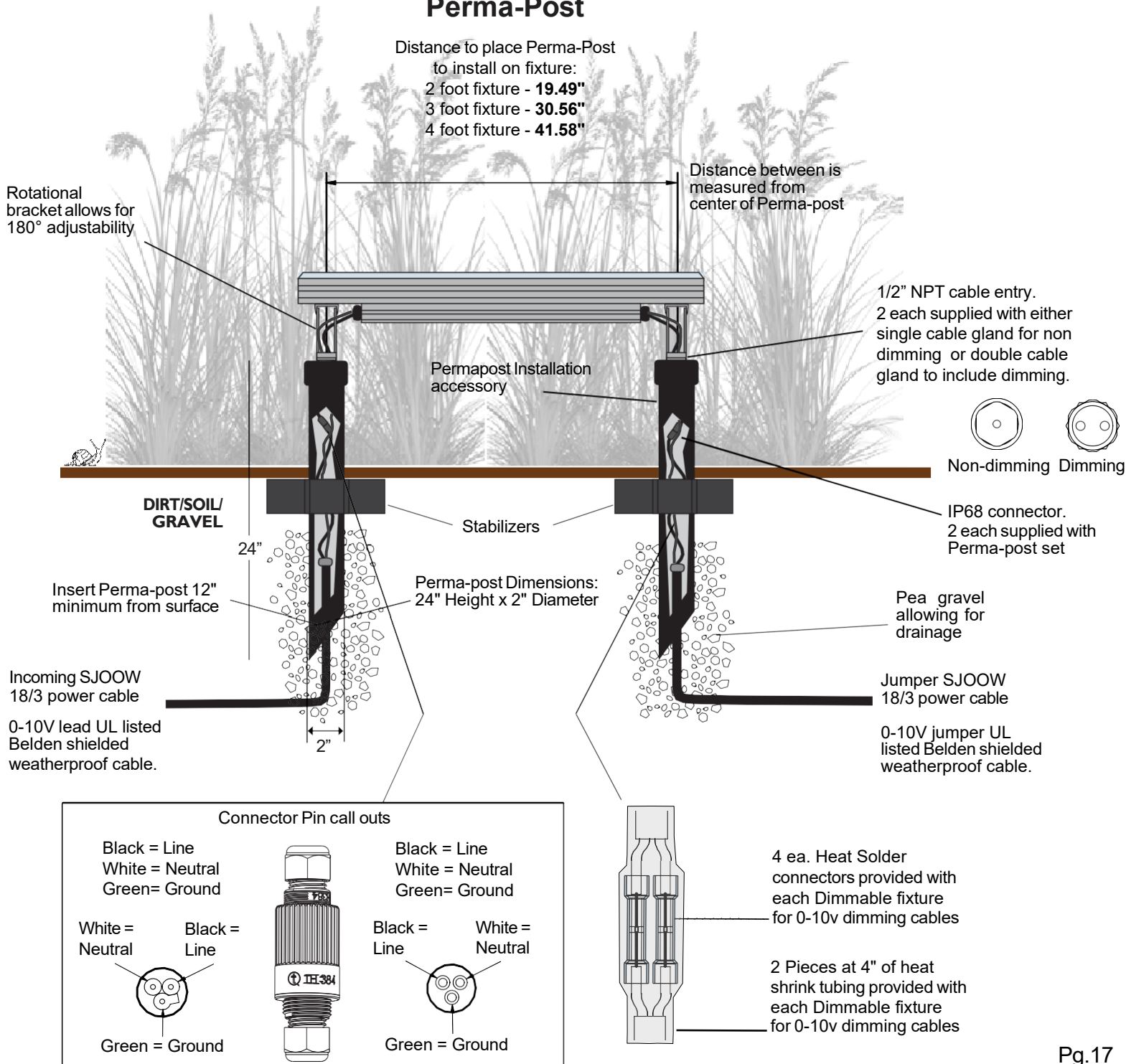
Max lengths include lengths of lead and jumper cables.

Example: 3 each 2ft. fixtures and 3 each 3ft. fixtures = 15ft. of fixture illumination.
Consider the following for every individual run:
28W for every 24" / 40W for every 36" / 53W for every 48".

Perma-Post Mounting Instructions

- Space out the distance of the two Perma-post based on the specific fixture length (see spacing distance lengths on drawing below). Use the NPT cable entry as the measuring point of the Perma-post spacing. Once the correct distance has been spaced out for that particular fixture, install the Perma-post onto the measured location.
 - Once the Perma-post is mounted, attach the fixture on the mounting bracket on the Perma-post. With the appropriate fasteners, secure the bracket onto the mounting surface.
 - Run the cable attached to the fixture through the NPT cable gland and with the IP68 connector tube, make the connections from the power feed to the fixture's power cable.
- CAUTION: DO NOT MAKE CONNECTION WHILE POWER IS LIVE!**

Perma-Post



Maintenance

This fixture was designed and manufactured for a durable, long lasting use with minimum care. To ensure the maximum lifespan of this product, we encourage our customer to provide a quality visual inspection of the fixture and installation accessories every six months. If there are any visible signs of issues (i.e moisture or dust) during the inspection, please clean any of the dust or moisture with a soft cloth and check to make sure that any of the fixtures are still operating normally. If there are any issues regarding the fixture please contact us as we will assist the situation at hand.

Support

Any questions, problems, or comments you have please feel free to contact our Customer Service department during our business hours Monday-Friday 8am-5pm via: Email: usaorders@targetti.com
Phone: (714) 513-1991

Visit our website: <http://www.targettiusa.com>