



## ROUND STRAIGHT ARCHITECTURAL STEPPED POLE

RSSA-

POLE TO BE USED IN COMBINATION  
WITH FLOODLIGHT LUMINAIRES

### WARNING

**To ensure a maximum efficient use of the product, read the instructions before proceeding installment.**



This fixture must be installed by a licensed and qualified electrician. The installer must comply with NEC and local building codes when installing the fixture.



Electrical current can cause painful shock, serious injury, or even death. Make sure you turn off the power supply, ground fixture(s), and make sure all electrical connections are correct and secured tightly.



For use in IP66 installations.



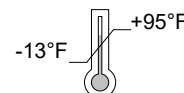
Keep the label of the original packaging if any eventual future claims are needed.

If in doubt about the symbols please refer to catalog or website



**IK 10**

120-277 VAC



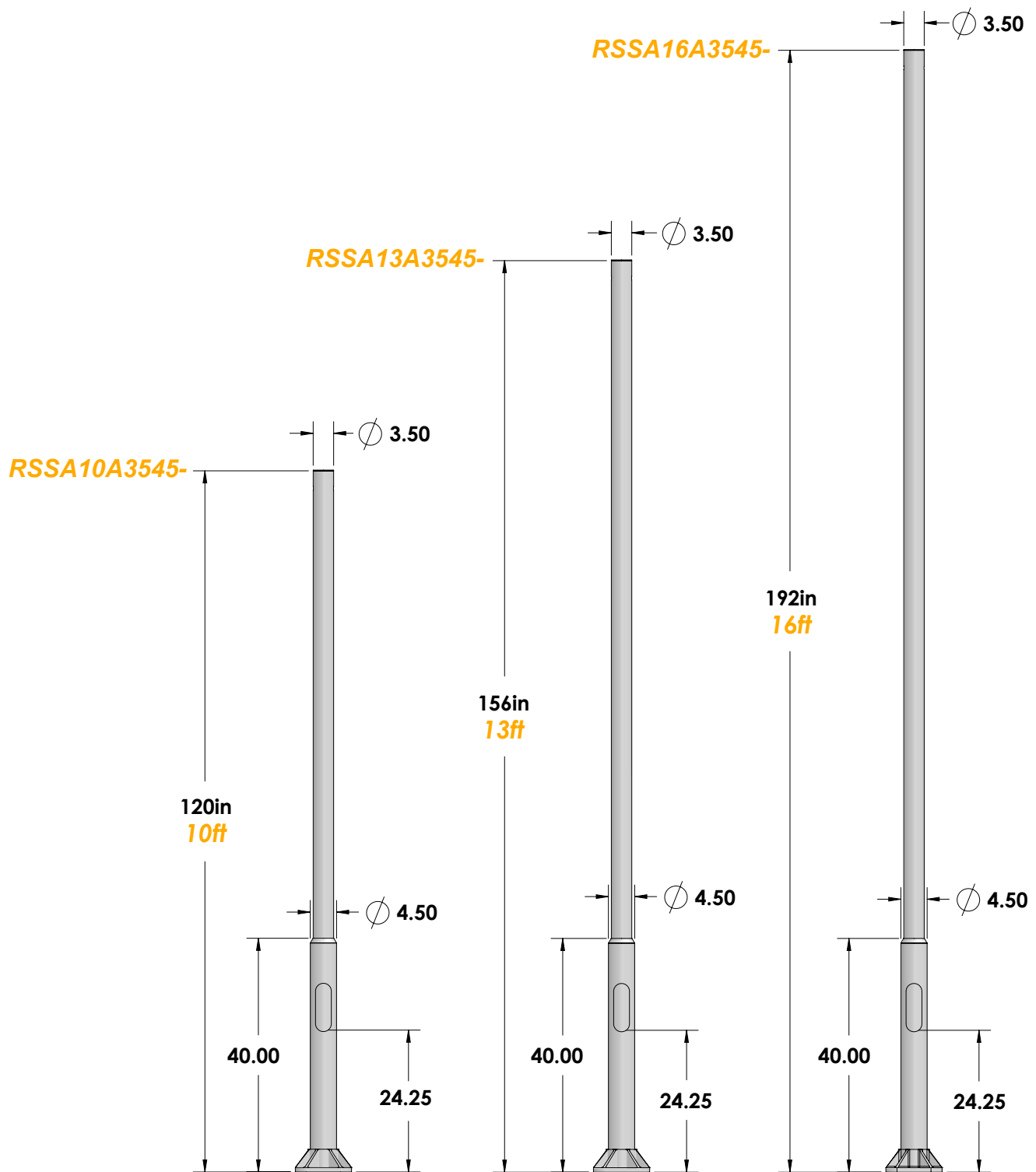
## Table of Contents

Packaging Contents / Dimensions  
Pole Accessories Installation  
Pole Diagram  
Maintenance / Support

Pg.2/6  
Pg.7/16  
Pg.17/18  
Pg.19

# Packaging Contents / Dimensions

## ROUND STRAIGHT ARCHITECTURAL STEPPED POLE *(REQUIRED)*



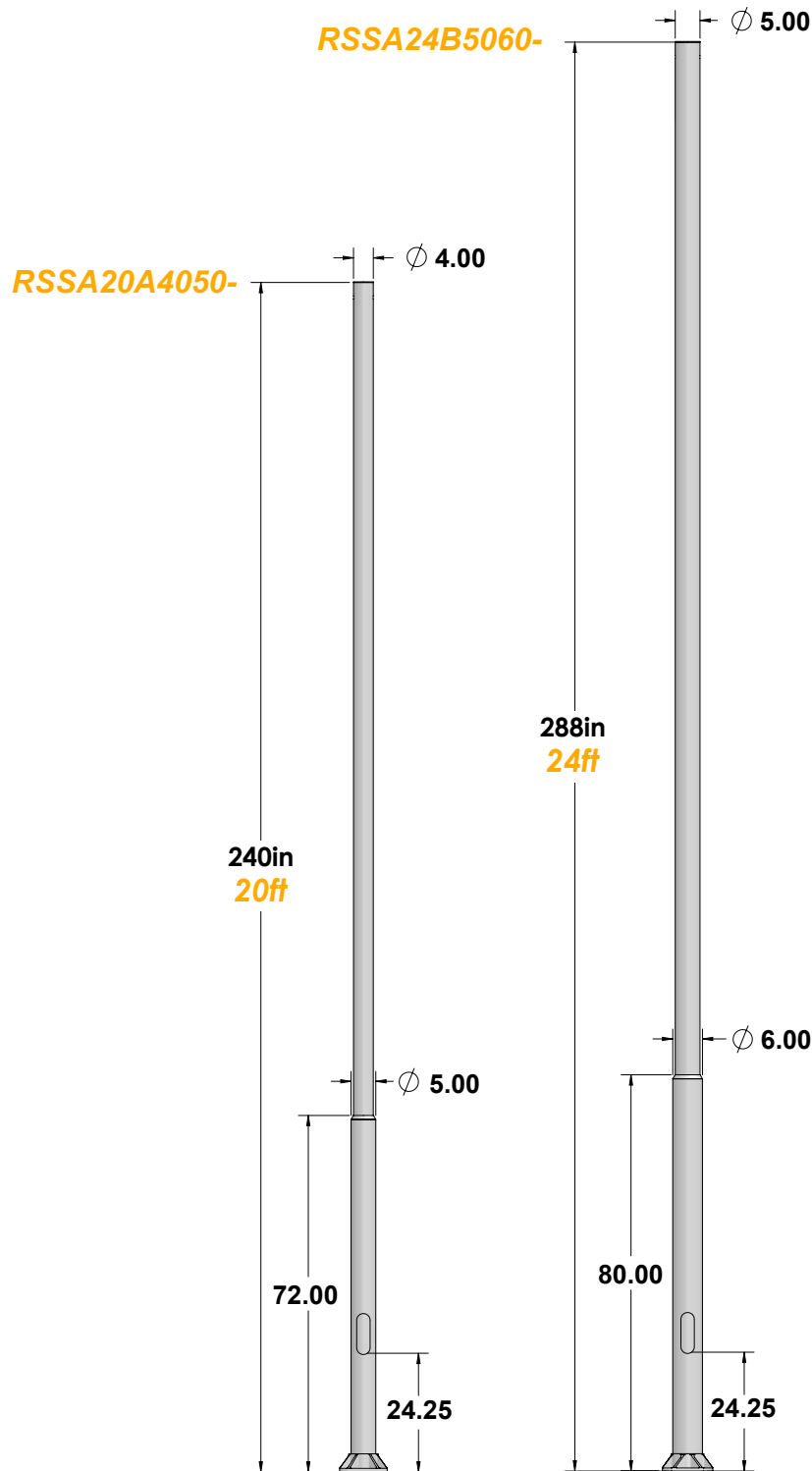
**10ft or 13ft or 16ft round powder coated steel pole.** Hot-galvanized EN ISO 1461 with integral hatch door for utility power. **Maximum of 1 bracket (4 fixtures).**

### Textured finish.....

- Ferrite Dark Grey
- Black
- Heritage Brown
- White
- Bronze
- Sandstone Grey

## Packaging Contents / Dimensions Cont.

### ROUND STRAIGHT ARCHITECTURAL STEPPED POLE **(REQUIRED)**



**20ft or 24ft round powder coated steel pole.** Hot-galvanized EN ISO 1461 with integral hatch door for utility power. **Maximum of 1 bracket (4 fixtures).**

#### Textured finish

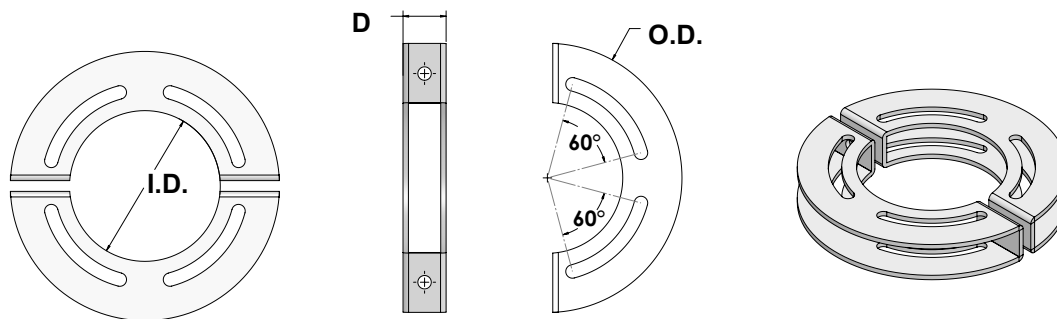
● Ferrite Dark Grey  
● Black

● Heritage Brown  
● White

● Bronze  
● Sandstone Grey

# Packaging Contents / Dimensions Cont.

## FIXTURE MOUNTING BRACKET **(REQUIRED)**



**Event pole mounting ring, 1ea.** Powder coated stainless steel.

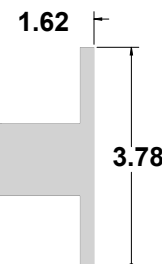
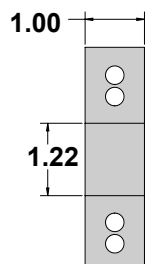
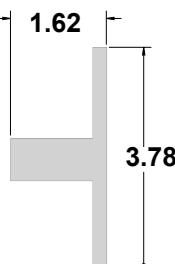
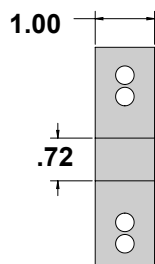
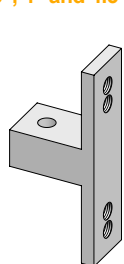
**Required for use with 1USPRBK01 mounting bracket.**

**BULLETO LINE, DART SMALL, DART ROUND SMALL REMOTE, DART ROUND SMALL** ranges compatible with up to 4ea fixtures per 4" & 4.5" poles or 6ea fixtures per 5" & 6" poles **DART MEDIUM, DART ROUND MEDIUM, VADER SOLO, VADER TW** ranges compatible with up to 4ea fixtures for all pole diameters.

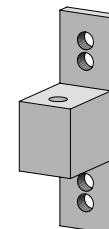
**DART MAXI and DART ROUND MAX** ranges compatible with up to 3ea fixtures per 4" & 4.5" poles or 4ea fixtures per 5" & 6" poles.

Pole Dia. (I.D.)	3.5"	4"	4.5"	5"	6"
Depth (D)	1.00"	1.00"	1.00"	1.625"	1.625"
Outside Dia. (O.D.)	6.25"	6.75"	7.25"	7.75"	8.75"
Part No.	RSA35RB (*)	RSA40RB (*)	RSA45RB (*)	RSA50RB (*)	RSA60RB (*)

**3.5", 4" and 4.5" Dia**



**5" and 6" Dia**

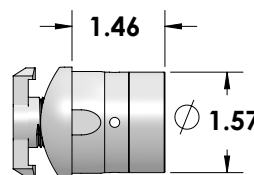
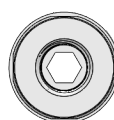
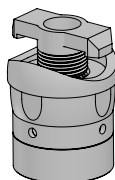


**Event pole fixture mounting bracket ring, 1ea.** Powder coated aluminum.

**Required for use with 1USPR mounting ring, one per fixture.**

Compatible with the following fixture families: **DART SMALL, DART ROUND SMALL REMOTE, DART ROUND SMALL, DART MEDIUM, DART ROUND MEDIUM, DART MAXI, DART ROUND MAXI.**

Pole Dia.	3.5", 4" and 4.5"	5" and 6"
Part No.	1RSABK4045Y (*)	1RSABK5060Y (*)



**Single pole fixture bracket, 1ea.** Powder coated stainless steel. Consult factory for mounting location.

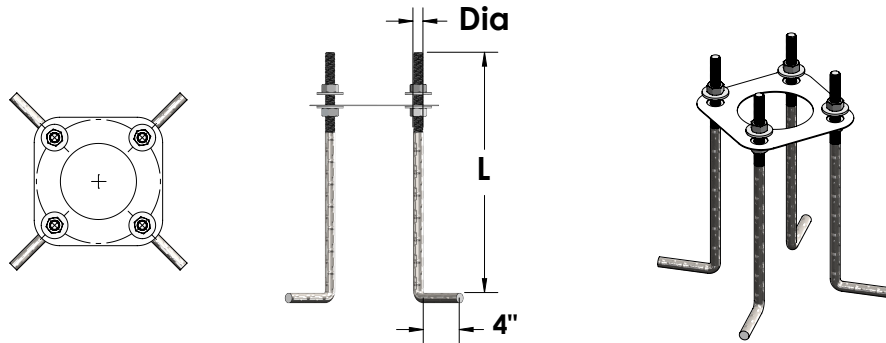
Compatible with **BULLETO LINE, VADER SOLO, and VADER TW** fixtures only.

Pole Dia.	3.5"Dia	4"Dia	5"Dia
Part No.	A054 (*)	1USA05440 (*)	1USA05450 (*)



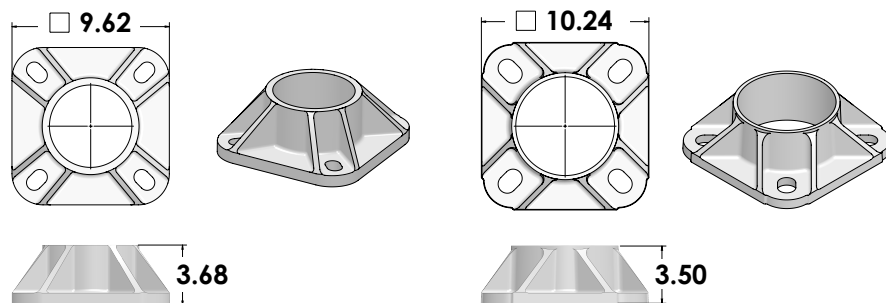
# Packaging Contents / Dimensions Cont.

## INSTALLATION (REQUIRED)



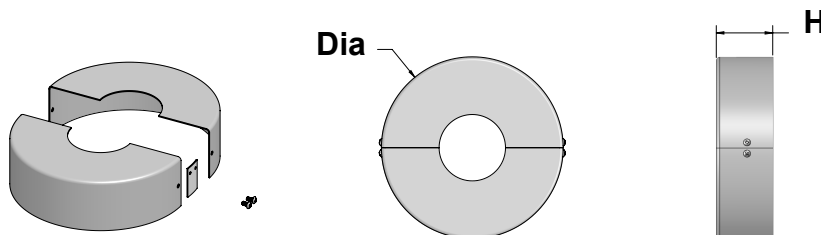
**Pole anchor kit**, 4ea 'J' anchor bolts per ASTM 1554-55, 8ea hex nuts and washers. **(REQUIRED per pole)**

<i>Pole Heights</i>	<b>10ft / 13ft / 16ft</b>	<b>20ft / 24ft</b>
<i>Length (L)</i>	18"	36"
<i>Diameter (Dia)</i>	0.75"	1"
<i>Part No.</i>	<b>AB4341840</b>	<b>AB4123640</b>



**Round Straight Pole template**, 1ea. **(1ea REQUIRED per project)**

<i>Pole Dia. (top)</i>	<b>3.5"Dia</b>	<b>4"Dia</b>	<b>5"Dia</b>
<i>Pole Dia. (bottom)</i>	<b>4.5"Dia</b>	<b>5"Dia</b>	<b>6"Dia</b>
<i>Part No.</i>	<b>RSA45TM</b>	<b>RSA50TM</b>	<b>RSA60TM</b>

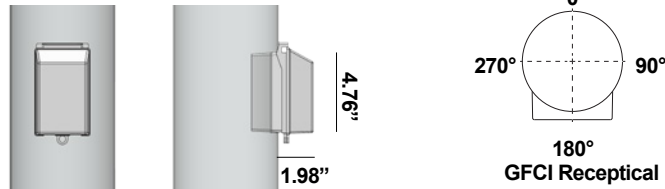


**Decorative cast aluminum pole base cover**. **(OPTIONAL per pole)**

<i>Pole Dia. (top)</i>	<b>3.5"Dia</b>	<b>4"Dia</b>	<b>5"Dia</b>
<i>Pole Dia. (bottom)</i>	<b>4.5"Dia</b>	<b>5"Dia</b>	<b>6"Dia</b>
<i>Cover (Dia)</i>	Ø 12"	Ø 12"	Ø 16"
<i>Height (H)</i>	4"	4"	6"
<i>Part No.</i>	<b>RSA45BC (*)</b>	<b>RSA50BC (*)</b>	<b>RSA60BC (*)</b>

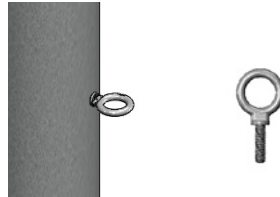
## Packaging Contents / Dimensions Cont.

### POLE ACCESSORIES (OPTIONAL)



**Receptical.** Single gang 15A GFCI duplex receptical mounted in UL listed water proof enclosure with aluminum casted in-use outlet cover, powder coated to match pole finish. Mounted as standard at +18" to bottom of enclosure at 180° on poled, consult factory for other mounting configurations.

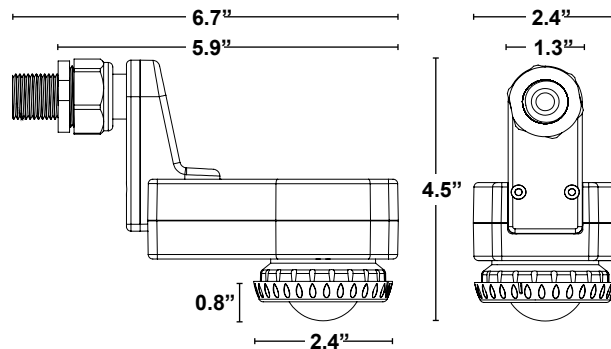
*Part No. R*



**Eye bolt.** 3/8" 304 16-thread size stainless steel with 1-1/4" thread.

To be used in conjunction with festoon luminaries. Compatible for 50lbs of load. Consult factory for mounting location.

*Part No. B*



**Integral outdoor 2-in-1 PIR motion sensor and photo cell.** 360° motion with dusk to dawn setting. Consult factory for mounting location.

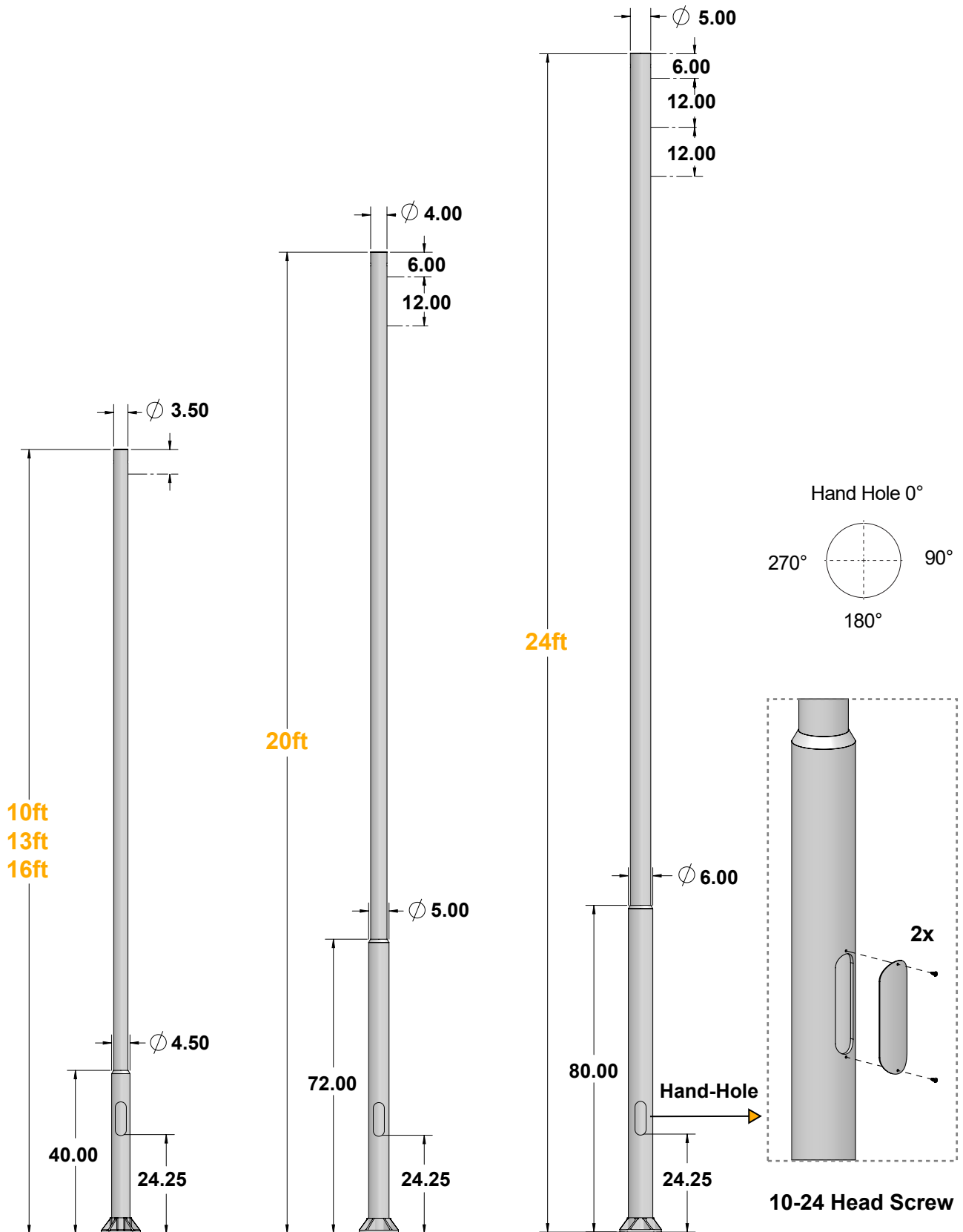
*FINISH* ● White

*Part No. B*

# Pole Accessories Installation

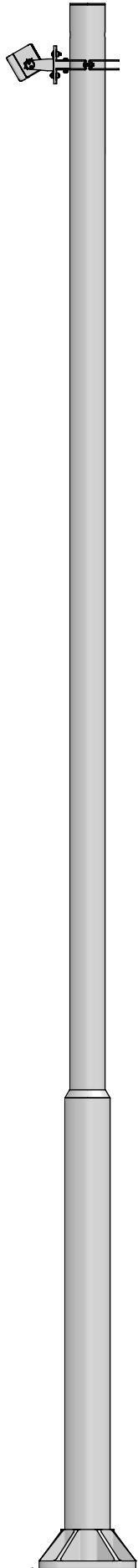
## Select height of pole and number of configuration levers

Dependant on fixture compatibility and configurations.

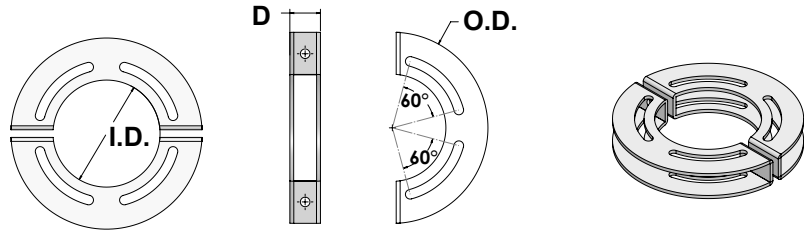


# Pole Accessories Installation

## FIXTURE MOUNTING BRACKET

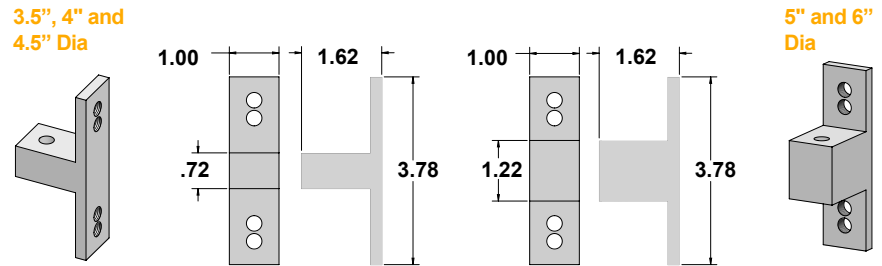


### Event pole mounting ring



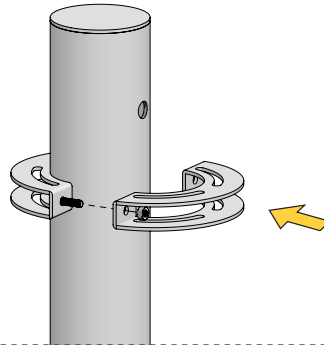
Pole Dia. (I.D.)	3.5"	4.0"	4.5"	5"	6"
Depth (D)	1.00"	1.00"	1.00"	1.625"	1.625"
Outside Dia. (O.D.)	6.25"	6.75"	7.25"	7.75"	8.75"
Part No.	RSA35RB	RSA40RB	RSA45RB	RSA50RB	RSA50RB

### Event pole fixture mounting bracket ring

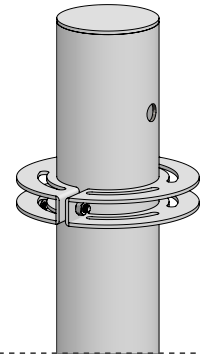


Pole Dia.	3.5", 4" and 4.5"	5" and 6"
Part No.	1RSABK4045Y (*)	1RSABK5060Y (*)

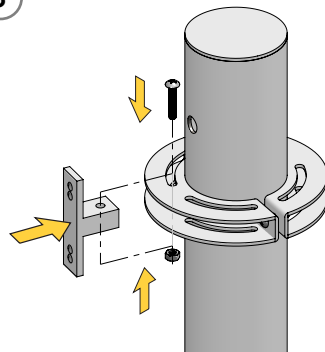
1



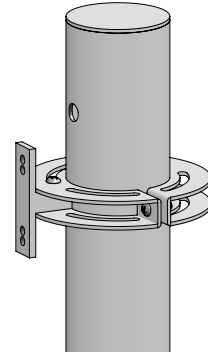
2



3



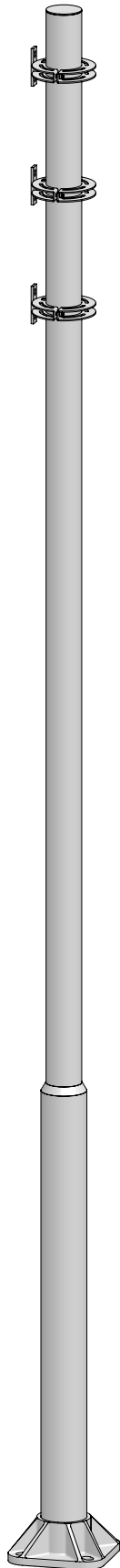
4



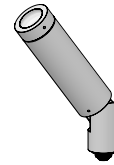
# Pole Accessories Installation

## Select fixture luminaire

*Dependant on fixture compatibility and configurations.*

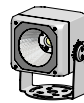


### BULLETTTO Series

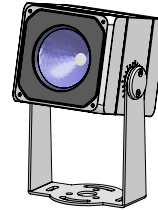


### BULLETTTO Line

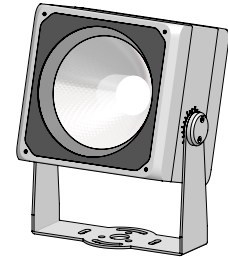
### DART Series



### DART Small



### DART Medium

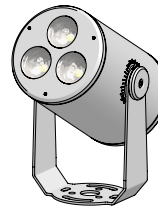


### DART Maxi

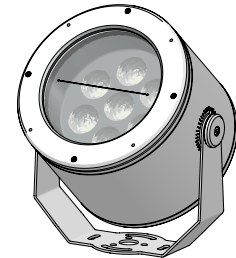
### DART ROUND Series



### DART ROUND Small



### DART ROUND Medium



### DART ROUND Maxi

### VADER Series



### VADER Solo, VADER TW

### Durastrand



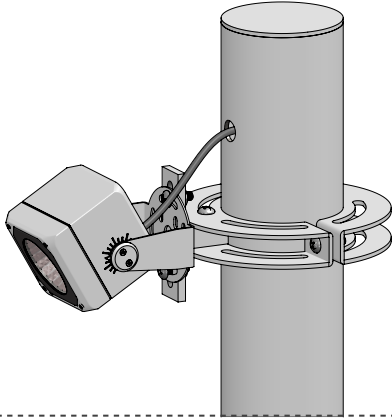
### DURACABLE INTELLISTRAND

## Pole Accessories Installation

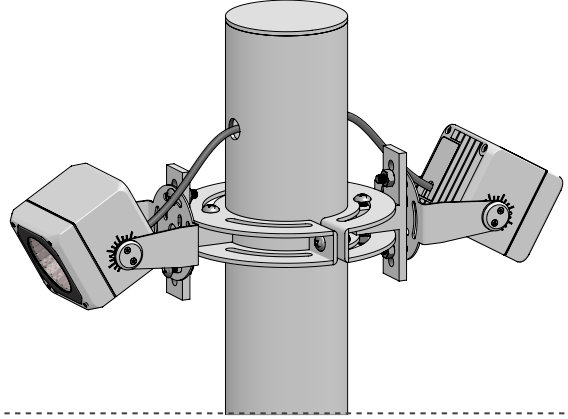
Select number of fixtures on each bracket, relative to each level desired.

*Dependant on fixture compatibility and configurations.*

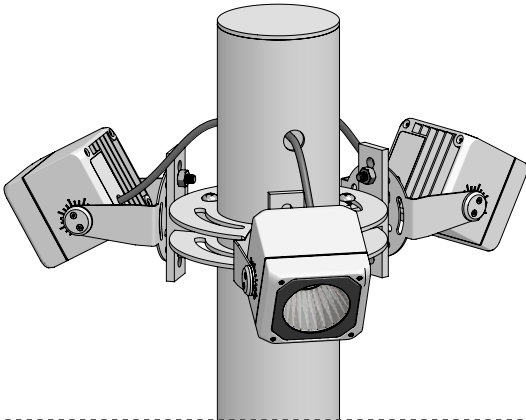
**Mounting Bracket, 1 Fixture**



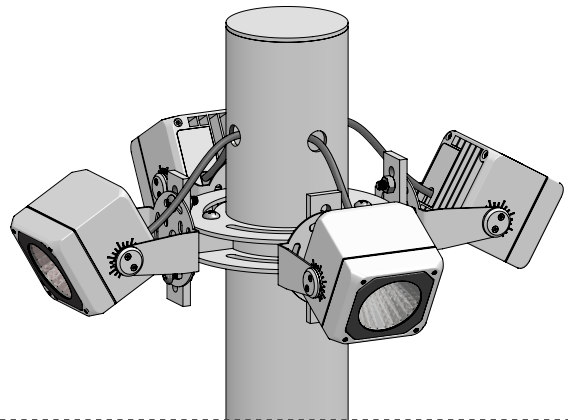
**Mounting Bracket, 2 Fixtures**



**Mounting Bracket, 3 Fixtures**



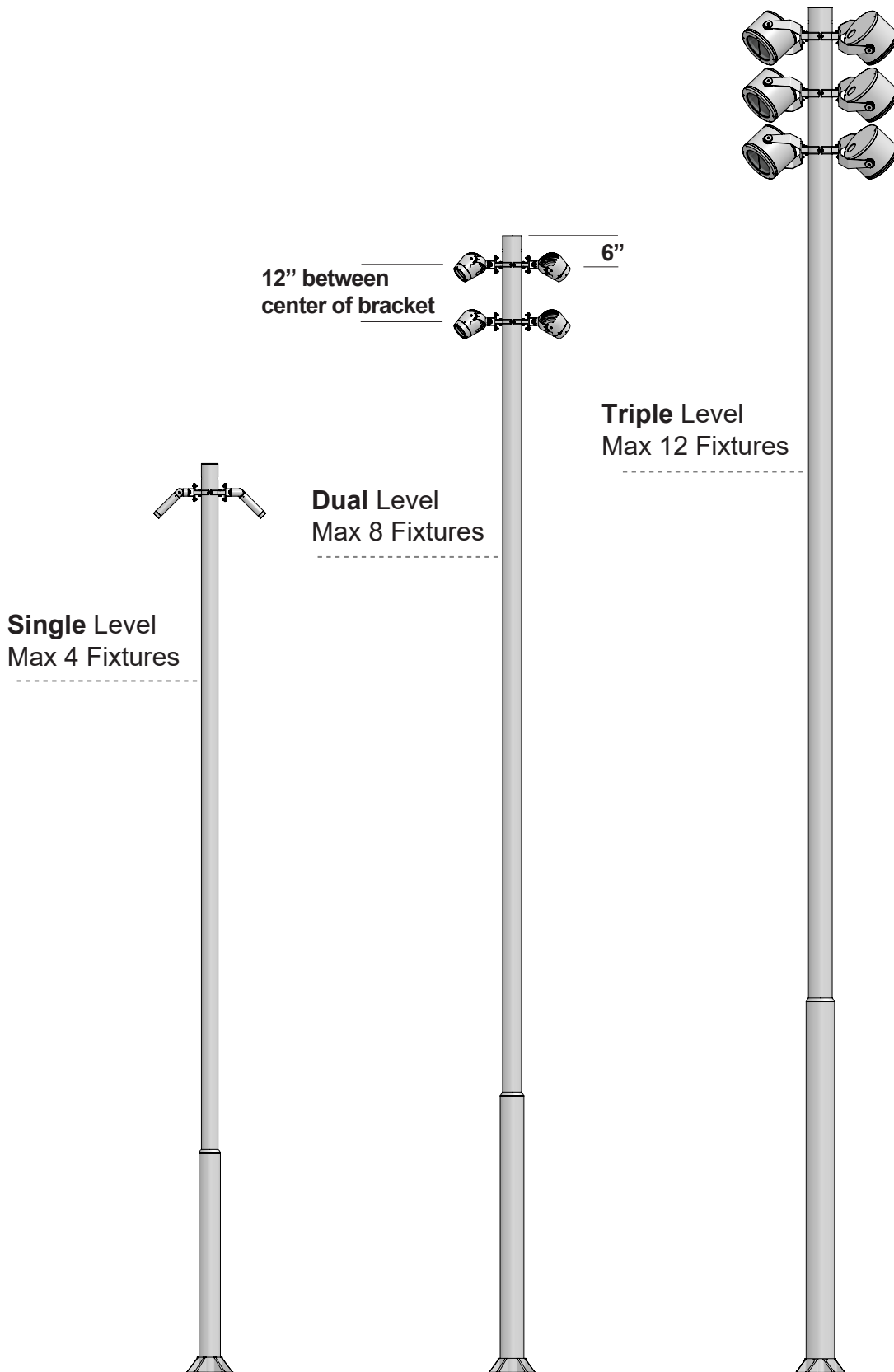
**Mounting Bracket, 4 Fixtures**



# Pole Accessories Installation

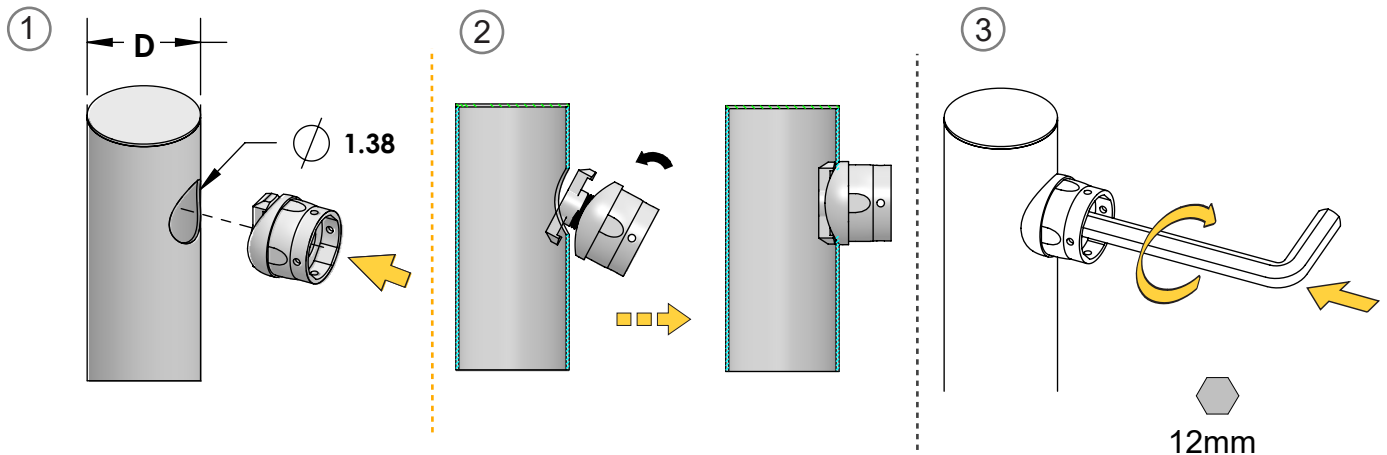
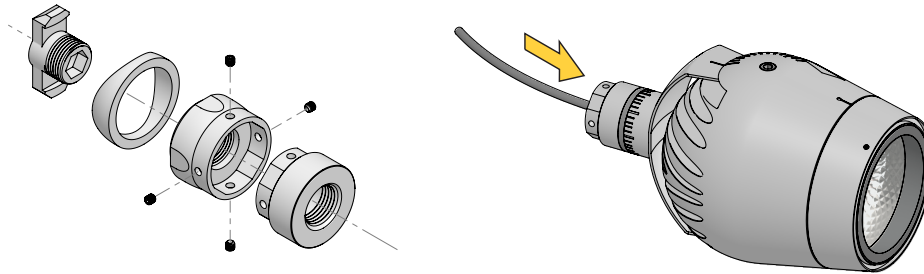
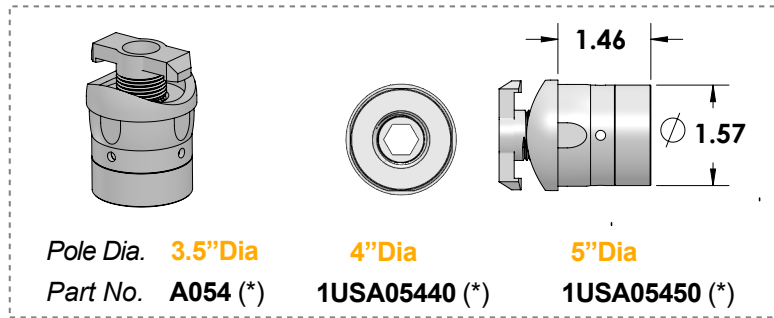
## Select number of configuration levels

*Dependant on fixture compatibility and configurations.*

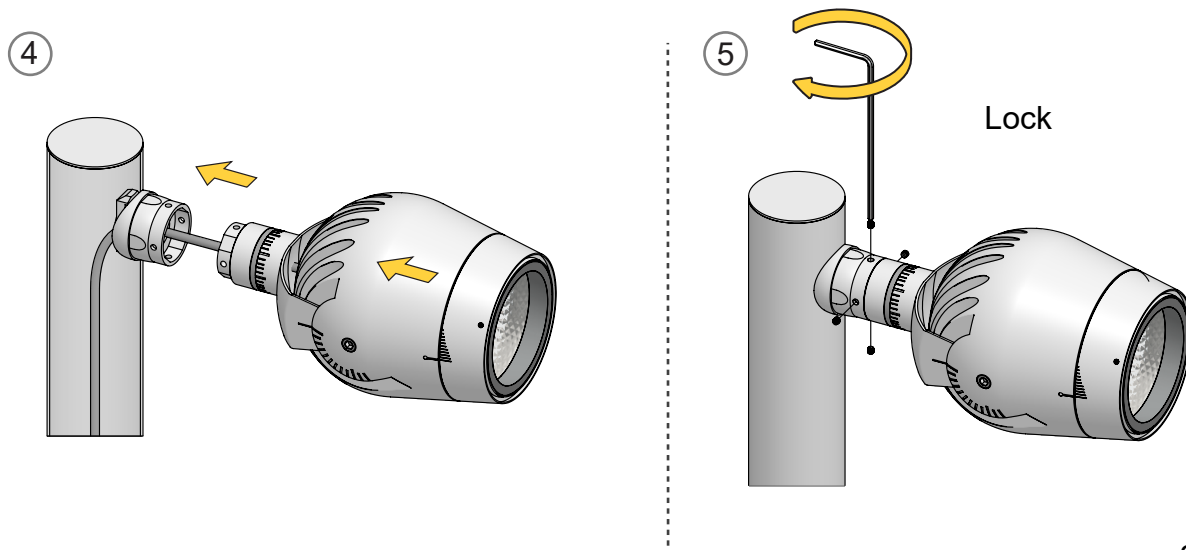


# Pole Accessories Installation

## SINGLE POLE FIXTURE BRACKET

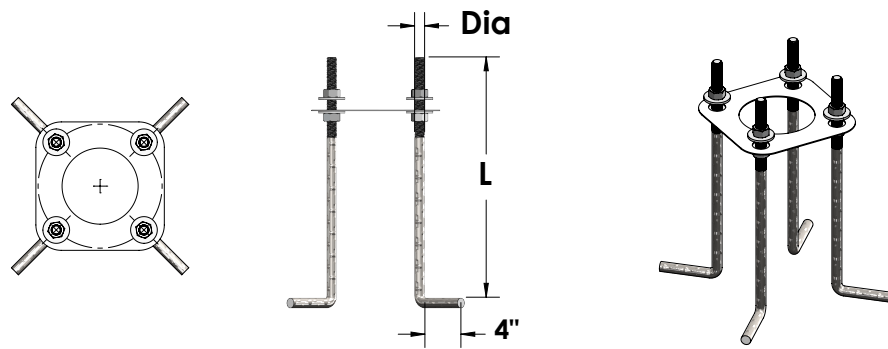


*Protect the drilled hole with proper anti-corrosion agent, to restore rust protection*





# Pole Accessories Installation



**Pole anchor kit**, 4ea 'J' anchor bolts per ASTM 1554-55, 8ea hex nuts and washers.

*Pole Heights*

**10ft / 13ft / 16ft**

**20ft / 24ft**

*Length (L)*

18"

36"

*Diameter (Dia)*

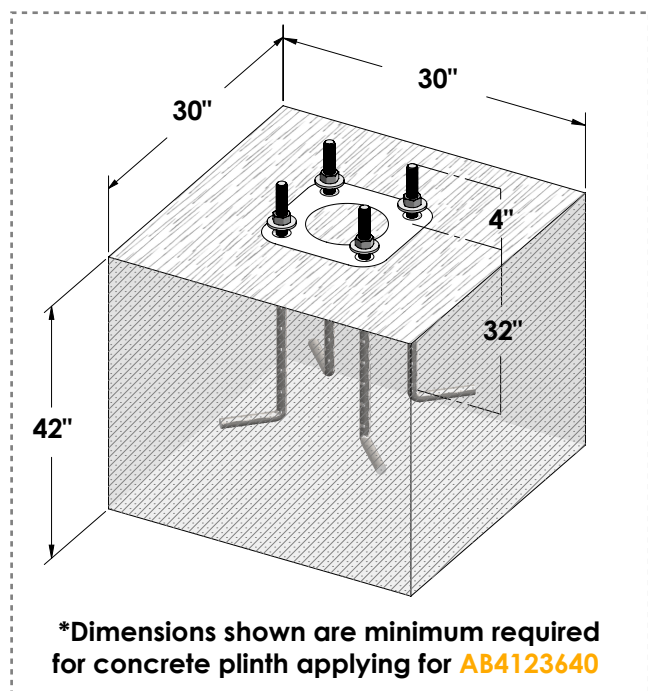
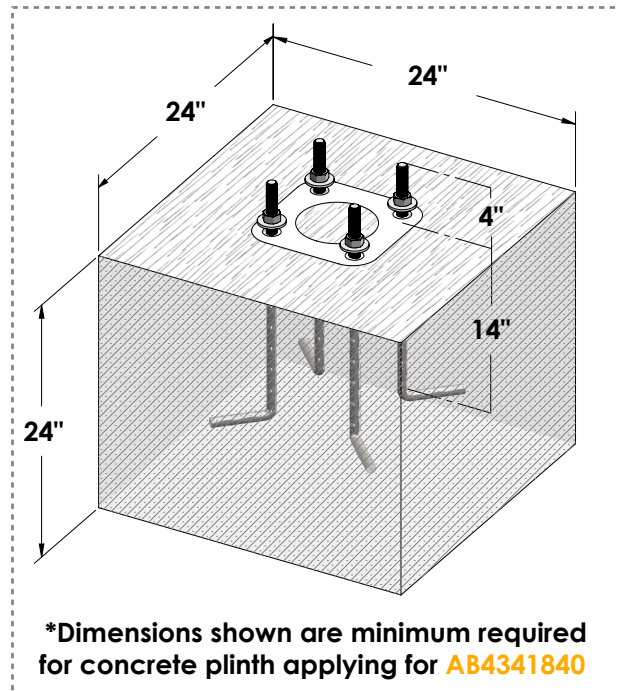
0.75"

1"

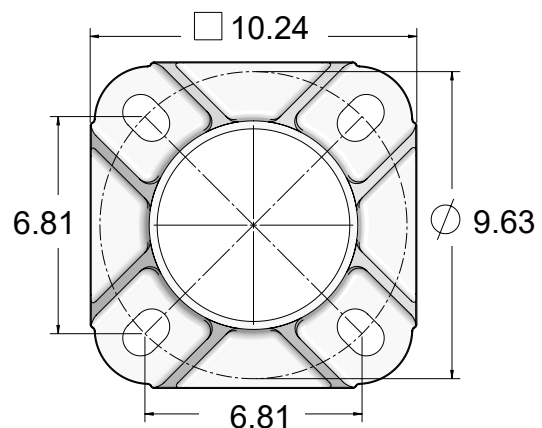
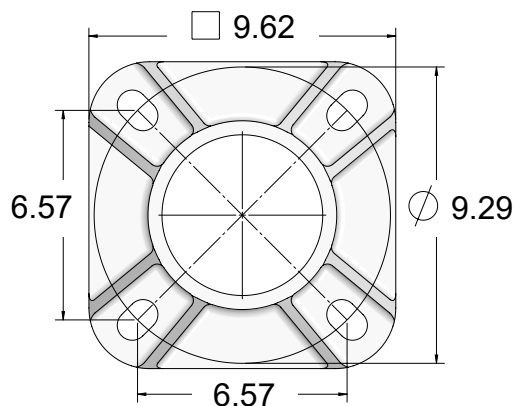
*Part No.*

**AB4341840**

**AB4123640**



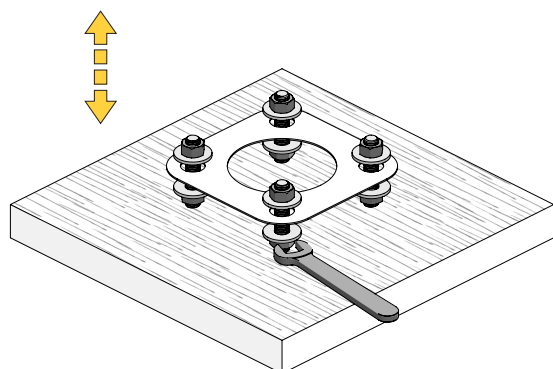
## Bolt Pattern Template



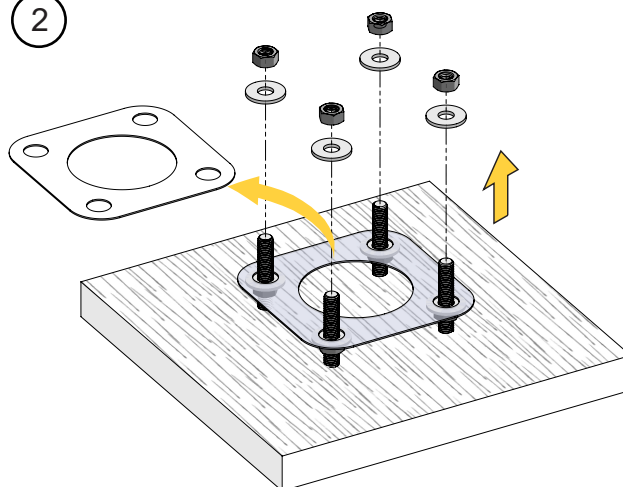
# Pole Accessories Installation

AB4341840

## 1 Adjustment

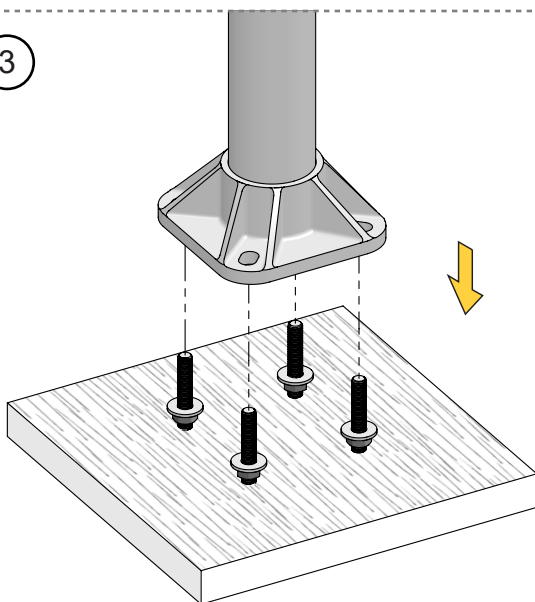


## 2



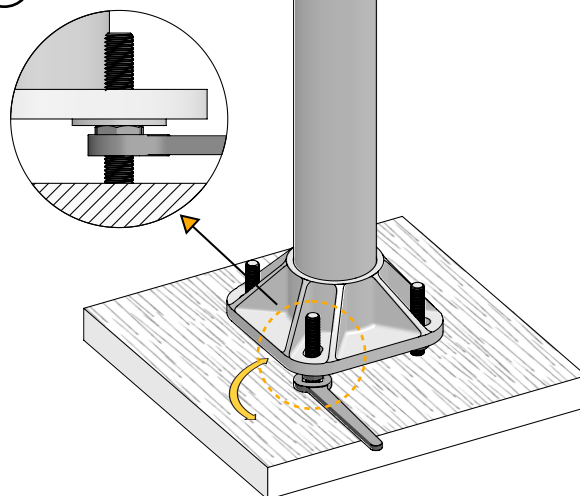
*Row to be removed before pole installation*

## 3

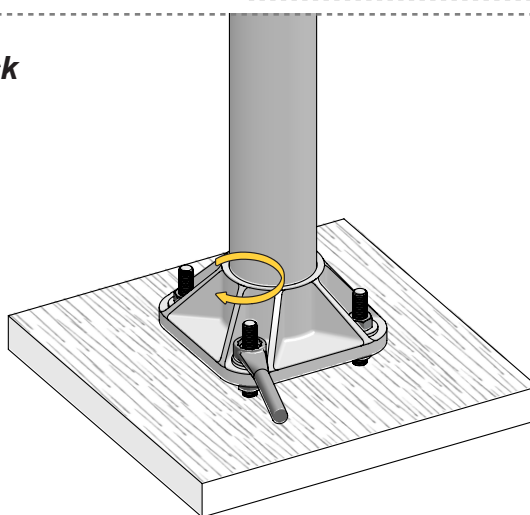


## 4

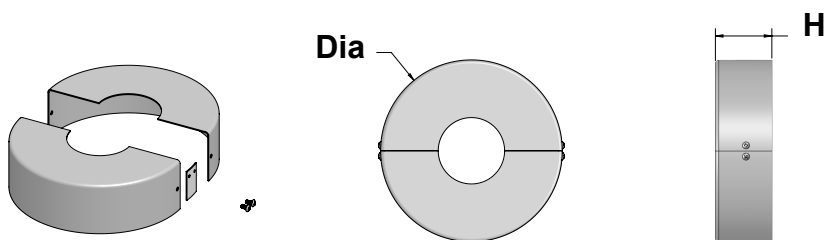
**Level**



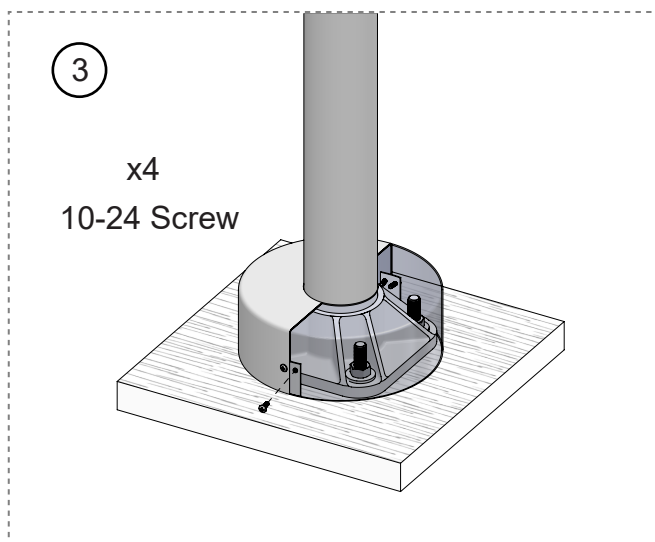
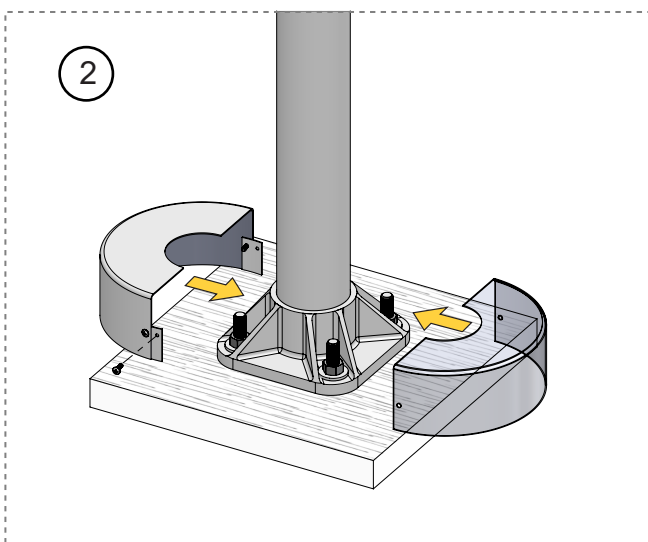
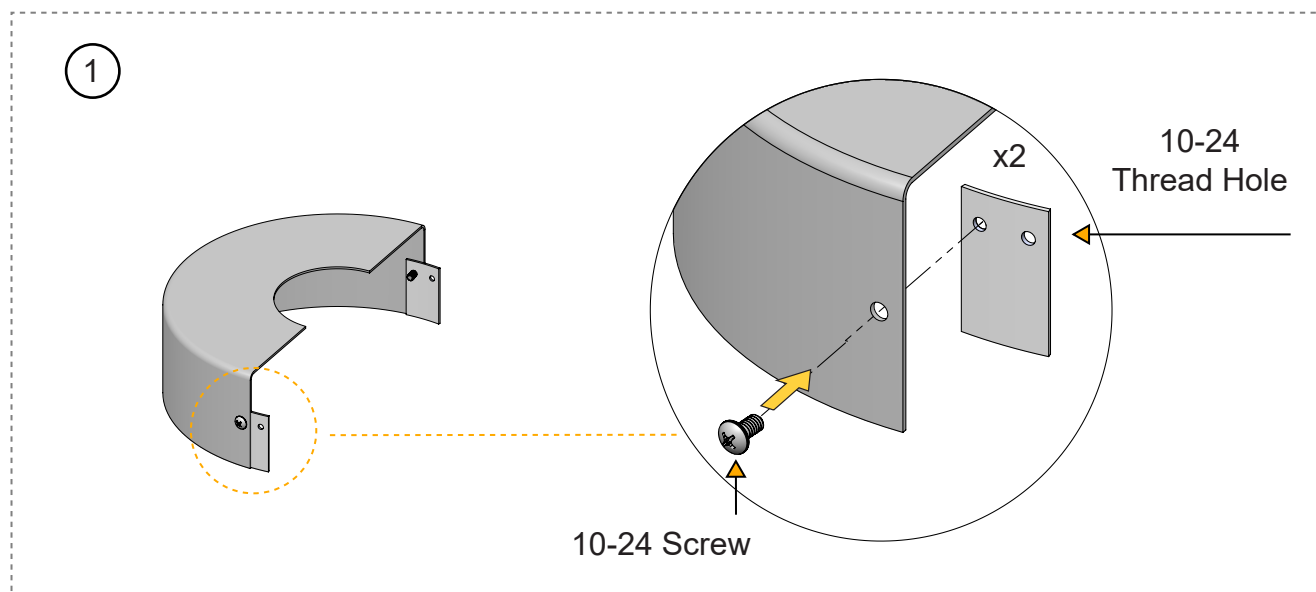
## 5 Lock



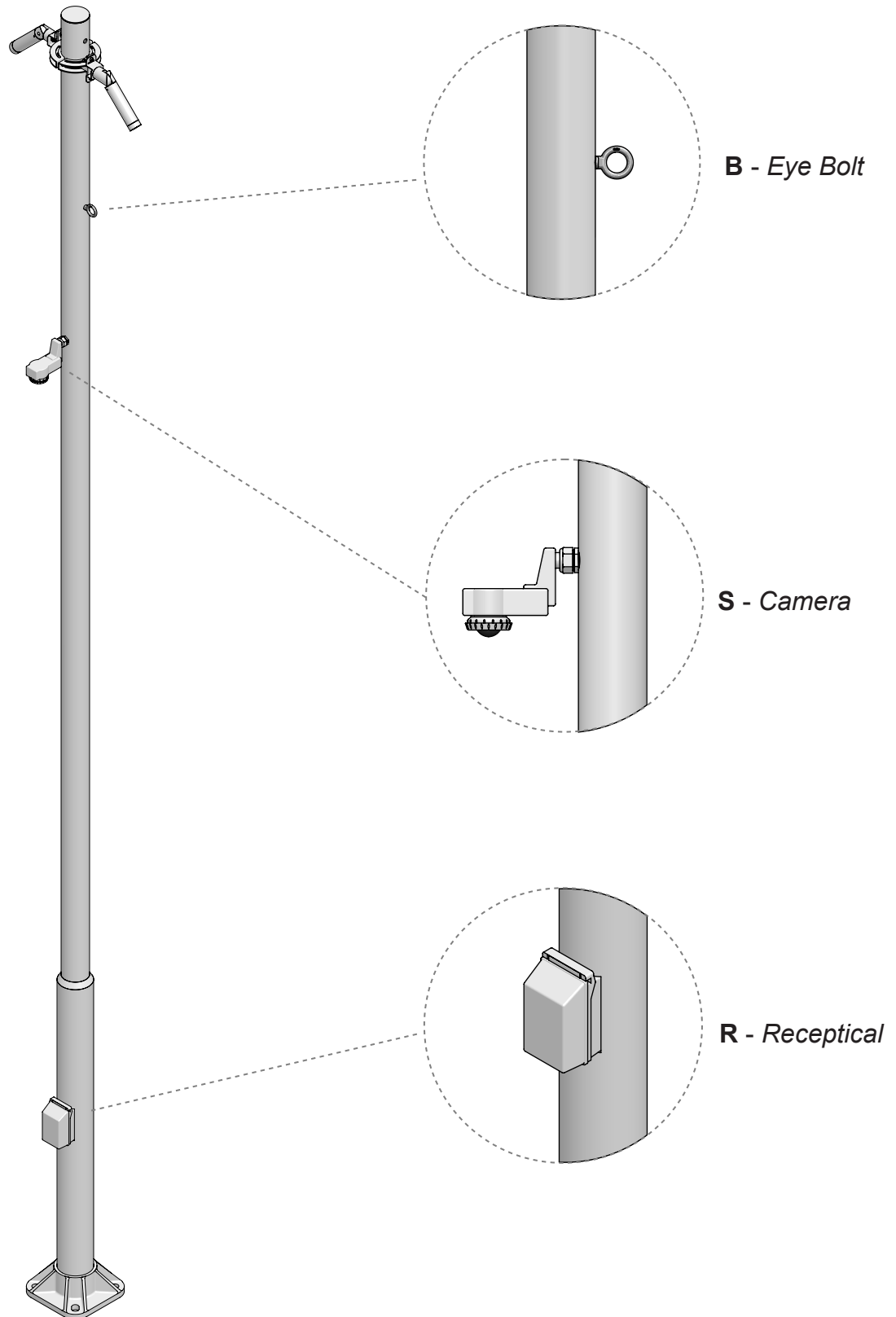
# Cover Accessory Installation



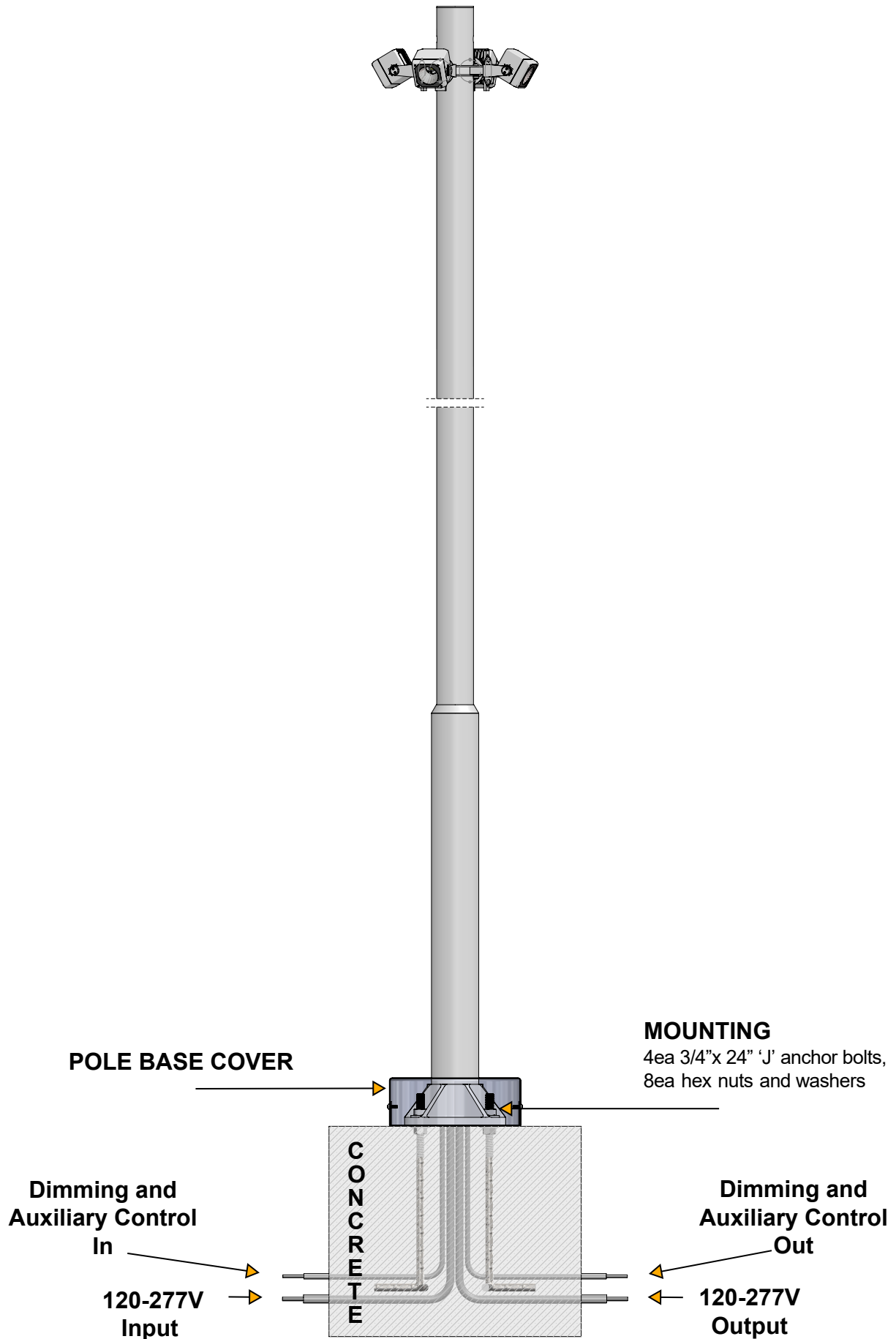
Pole Dia. (top)	3.5"Dia	4"Dia	5"Dia
Pole Dia. (bottom)	4.5"Dia	5"Dia	6"Dia
Cover (Dia)	Ø 12"	Ø 12"	Ø 16"
Height (H)	4"	4"	6"
Part No.	RSA45BC (*)	RSA50BC (*)	RSA60BC (*)



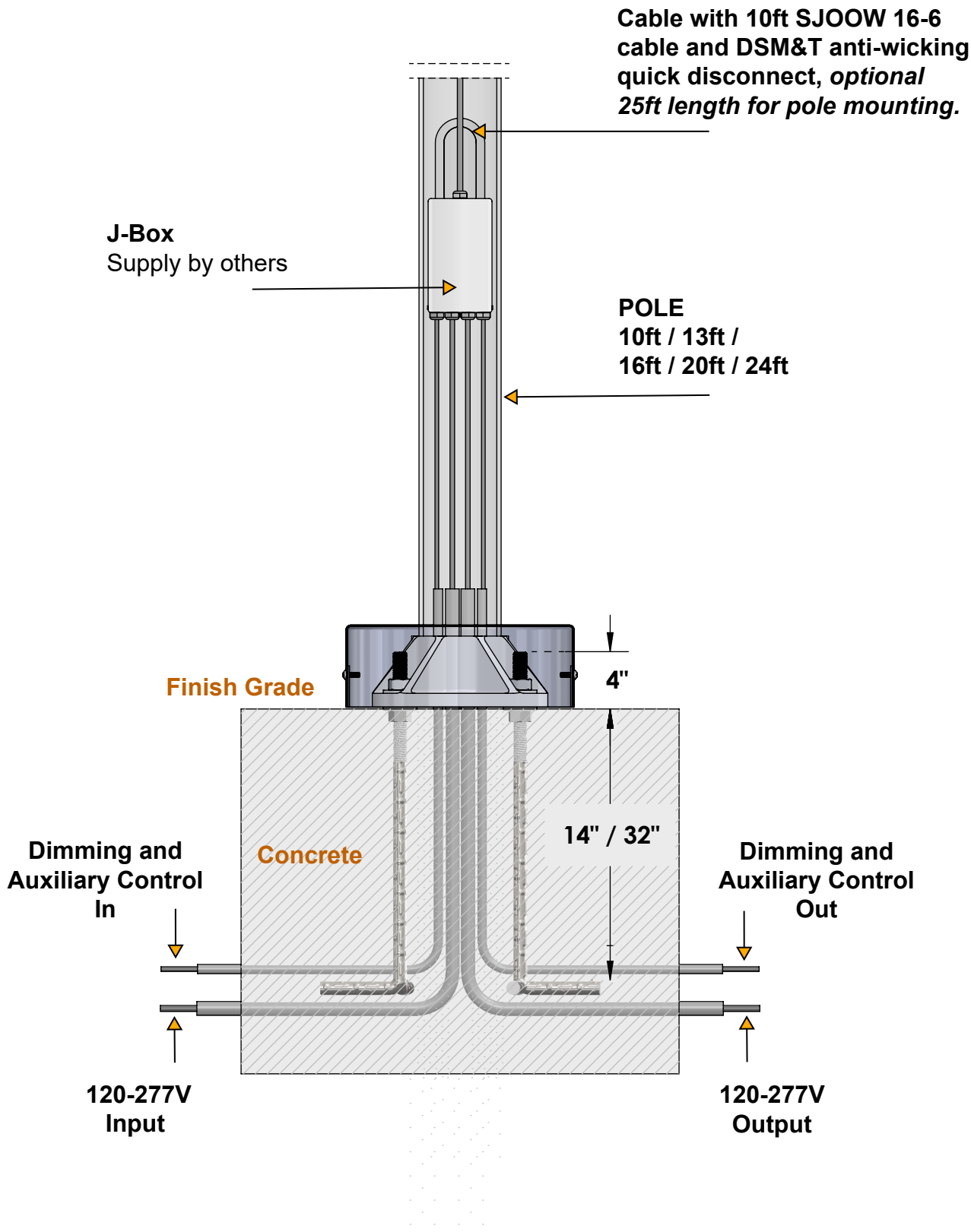
## Pole Accessories Installation Cont. (Optional)



# Pole Diagram



# Pole Diagram Detail



---

## Maintenance

This fixture was designed and manufactured for a durable, long lasting use with minimum care. To ensure the maximum lifespan of this product, we encourage our customers to provide a quality visual inspection of the fixture and installation accessories every six months. If there are any visible signs of issues (i.e moisture or dust) during the inspection, please clean any of the dust or moisture with a soft cloth and check to make sure that all fixtures are still operating normally. If there are any issues regarding the fixture please contact us as we will assist the situation at hand.

---

## Support

Any questions, problems, or comments you have please feel free to contact our Customer Service department during our business hours Monday-Friday 8am-5pm via: Email: [usaorders@targetti.com](mailto:usaorders@targetti.com)

Phone:  
(714) 513-1991

Visit our website: <http://www.targettiusa.com>