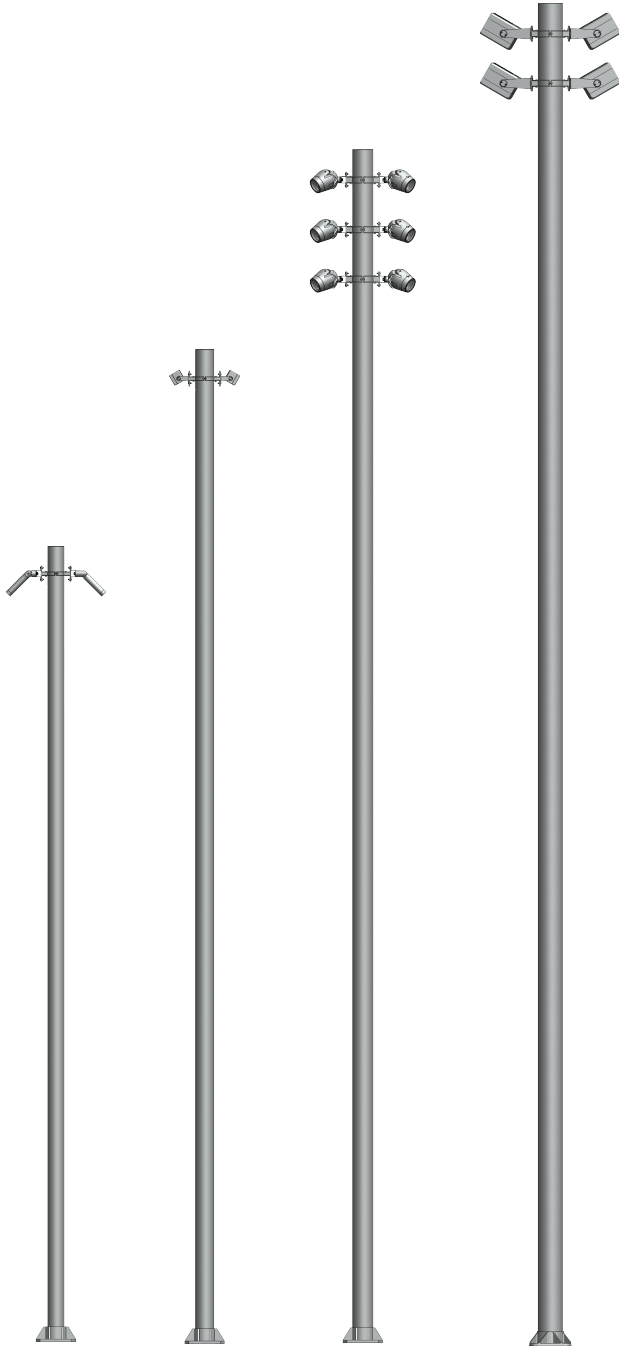




ROUND STRAIGHT POLE

RSA-



POLE TO BE USED IN COMBINATION
WITH FLOODLIGHT LUMINAIRES

WARNING

To ensure a maximum efficient use of the product, read the instructions before proceeding installment.



This fixture must be installed by a licensed and qualified electrician. The installer must comply with NEC and local building codes when installing the fixture.



Electrical current can cause painful shock, serious injury, or even death. Make sure you turn off the power supply, ground fixture(s), and make sure all electrical connections are correct and secured tightly.



For use in IP66 installations.



Keep the label of the original packaging if any eventual future claims are needed.

If in doubt about the symbols please refer to catalog or website



IK 10

120-277 VAC

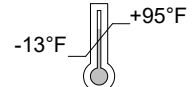


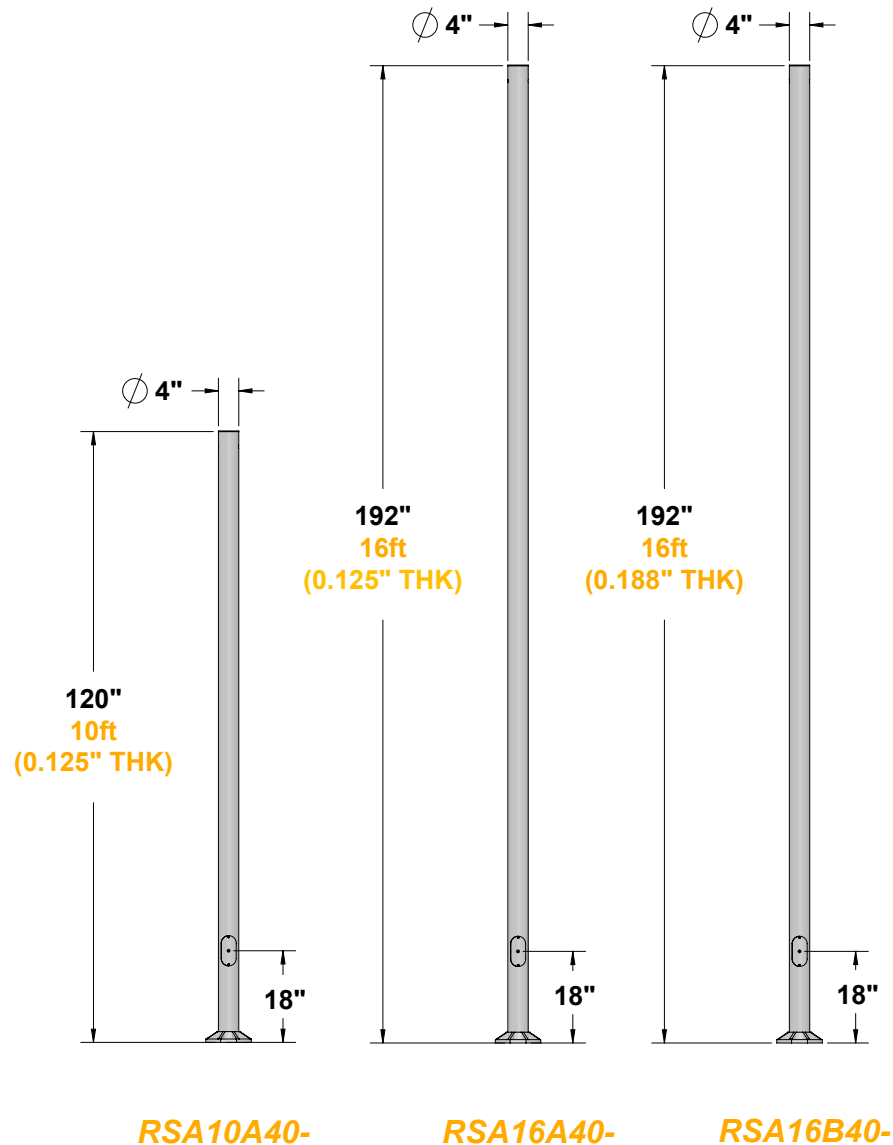
Table of Contents

Packaging Contents / Dimensions
Pole Accessories Installation
Pole Diagram
Maintenance / Support

Pg.2/7
Pg.7/18
Pg.19/20
Pg. 21

Packaging Contents / Dimensions

10ft and 16ft Round Straight Pole (REQUIRED)



10t or 16ft Extruded aluminum pole, power coated. Integral hatch door for utility power.
Maximum of 1 bracket (4 fixtures).

Textured finish.....

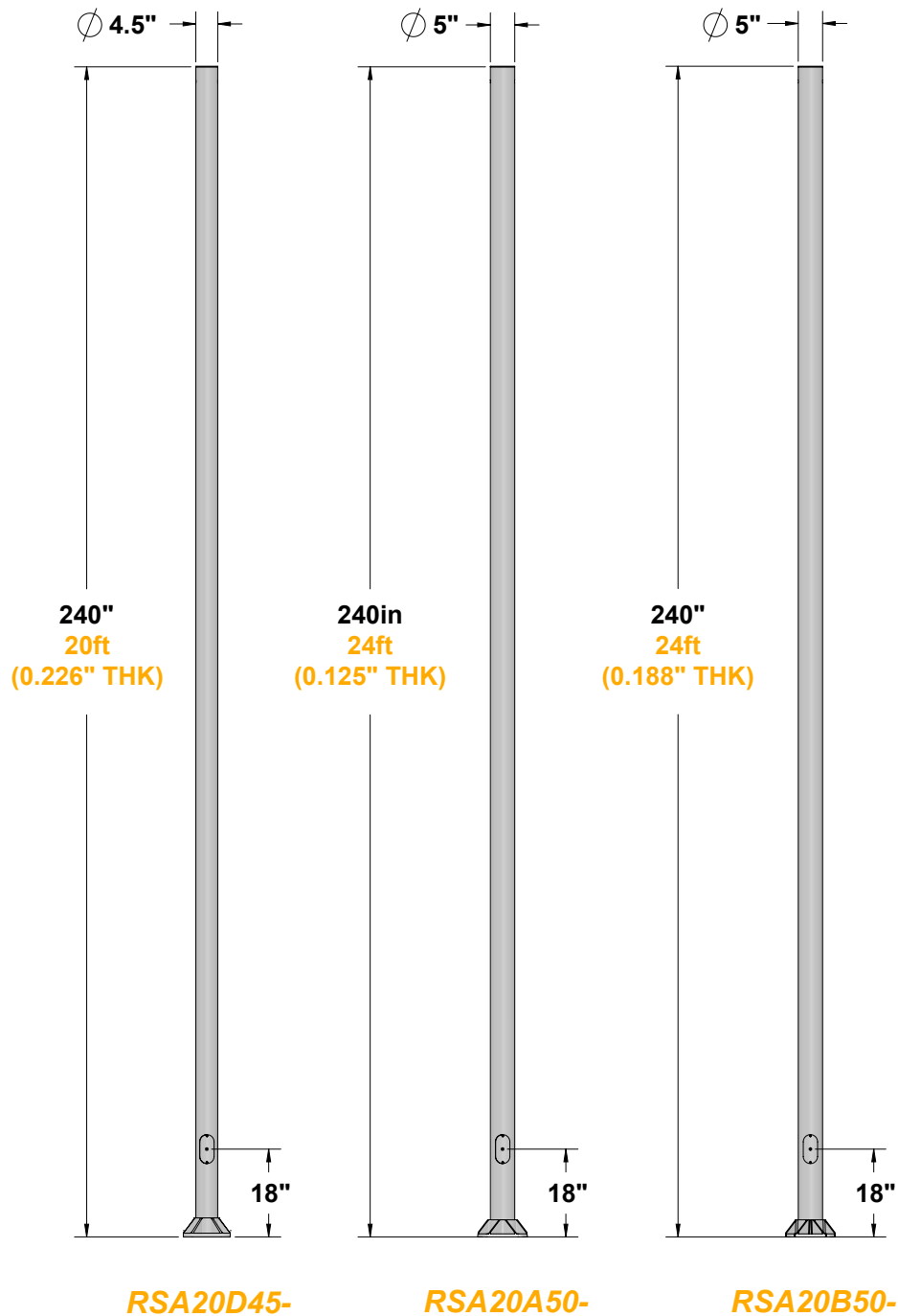
● Ferrite Dark Grey
● Black

● Heritage Brown
● White

● Bronze
● Sandstone Grey

Packaging Contents / Dimensions Cont.

10ft and 16ft Round Straight Pole (REQUIRED)



20ft Extruded aluminum pole, power coated. Integral hatch door for utility power.
Maximum of 1 bracket (4 fixtures).

Textured finish

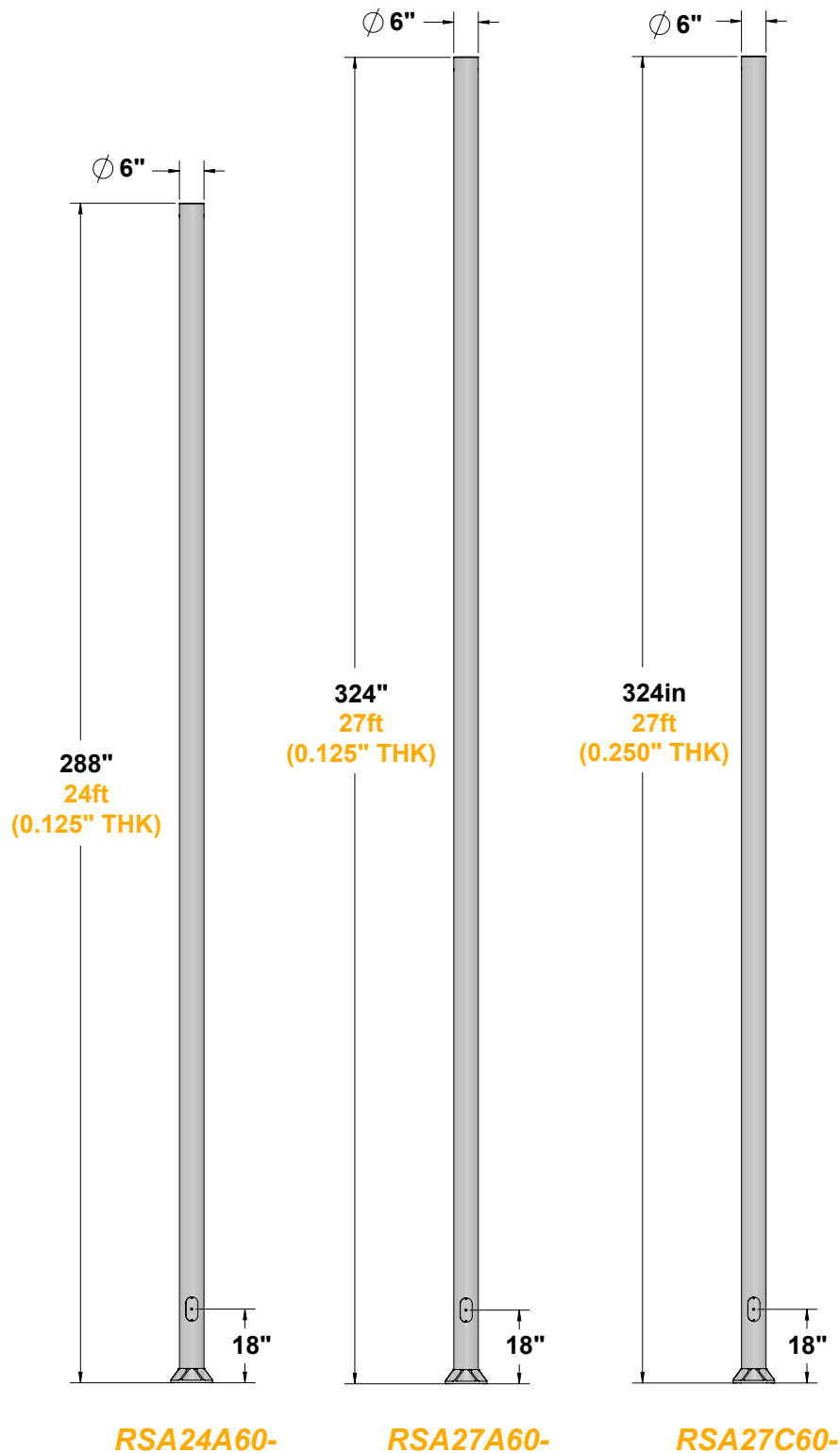
● Ferrite Dark Grey
● Black

● Heritage Brown
● White

● Bronze
● Sandstone Grey

Packaging Contents / Dimensions Cont.

10ft and 16ft Round Straight Pole (REQUIRED)



24t or 27ft Extruded aluminum pole, power coated. Integral hatch door for utility power.
Maximum of 1 bracket (4 fixtures).

Textured finish

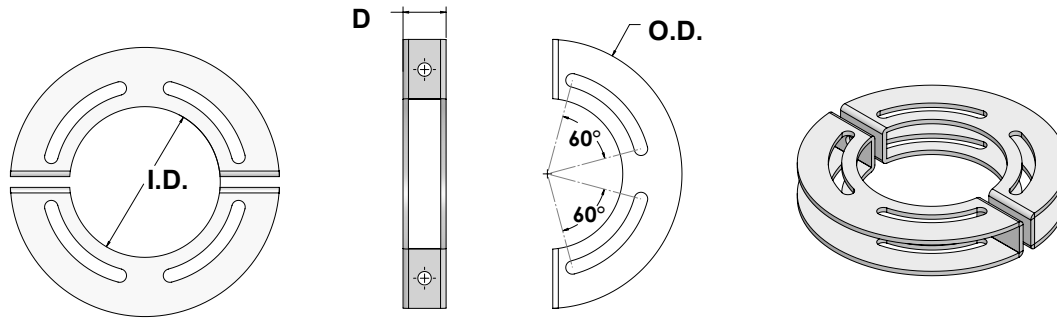
● Ferrite Dark Grey
● Black

● Heritage Brown
● White

● Bronze
● Sandstone Grey

Packaging Contents / Dimensions Cont.

Fixture Mounting Bracket (REQUIRED)



Event pole mounting ring, 1ea. Powder coated stainless steel.

Required for use with 1USPRBK01 mounting bracket.

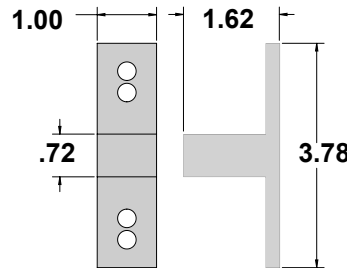
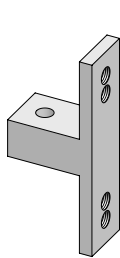
BULLETTTO LINE, DART SMALL, DART ROUND SMALL REMOTE, DART ROUND SMALL ranges compatible with up to 4ea fixtures per 4" & 4.5" poles or 6ea fixtures per 5" & 6" poles.

DART MEDIUM, DART ROUND MEDIUM, VADER SOLO, VADER TW ranges compatible with up to 4ea fixtures for all pole diameters.

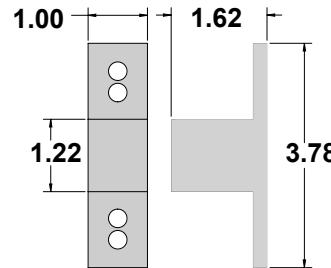
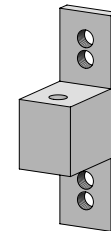
DART MAXI and DART ROUND MAX ranges compatible with up to 3ea fixtures per 4" & 4.5" poles or 4ea fixtures per 5" & 6" poles.

Pole Dia. (I.D.)	4"	4.5"	5"	6"
Depth (D)	1.00"	1.00"	1.625"	1.625"
Outside Dia. (O.D.)	6.75"	7.25"	7.75"	8.75"
Part No.	RSA40RB (*)	RSA45RB (*)	RSA50RB (*)	RSA60RB (*)

4" and 4.5" Dia



5" and 6" Dia

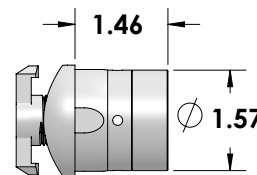
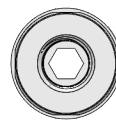
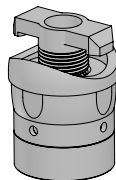


Event pole fixture mounting bracket ring, 1ea. Powder coated aluminum.

Required for use with 1USPR mounting ring, one per fixture.

Compatible with the following fixture families: **DART SMALL, DART ROUND SMALL REMOTE, DART ROUND SMALL, DART MEDIUM, DART ROUND MEDIUM, DART MAXI, DART ROUND MAXI.**

Pole Dia.	4" and 4.5"	5" and 6"
Part No.	1RSABK4045Y (*)	1RSABK5060Y (*)



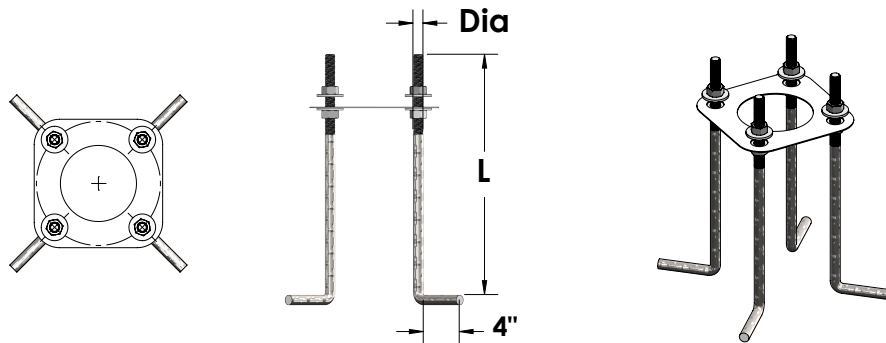
Single pole fixture bracket, 1ea. Powder coated stainless steel. Consult factory for mounting location.

Compatible with **BULLETTTO LINE, VADER SOLO, and VADER TW** fixtures only.

Pole Dia.	4"Dia	4.5"Dia	5"Dia	6"Dia
Part No.	1USA05240 (*)	1USA05245 (*)	1USA05250 (*)	1USA05260 (*)

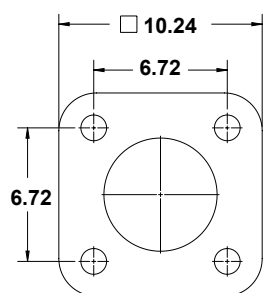
Packaging Contents / Dimensions Cont.

Installation (REQUIRED)

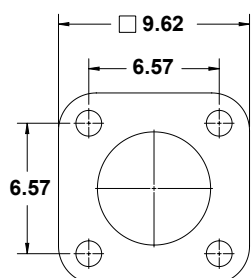
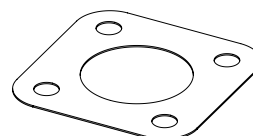


Pole anchor kit, 4ea 'J' anchor bolts per ASTM 1554-55, 8ea hex nuts and washers. (REQUIRED per pole)

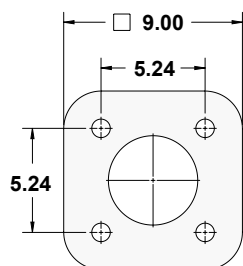
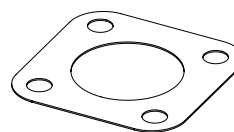
<i>Pole Heights</i>	10ft / 16ft	20ft / 24ft / 27ft
<i>Length (L)</i>	18"	36"
<i>Diameter (Dia)</i>	0.75"	1"
<i>Part No.</i>	AB4341840	AB4343640



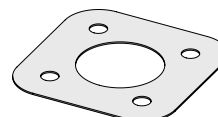
6" Dia Version



4.5 & 5" Dia Version



4" Dia Version

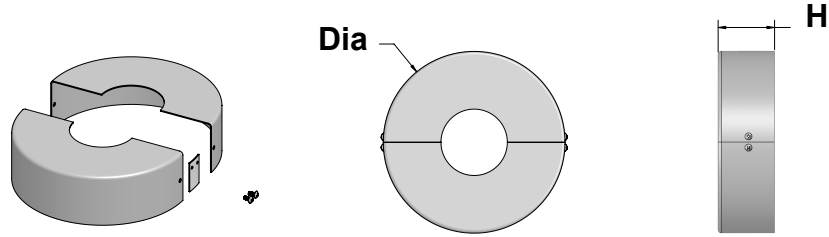


Round Straight Pole template, 1ea. (1ea REQUIRED per project)

<i>Pole Dia.</i>	4.0"Dia	4.5"Dia	5"Dia	6"Dia
<i>Part No.</i>	RSA40TM	RSA45TM	RSA50TM	RSA60TM

Packaging Contents / Dimensions Cont.

Installaion (OPTIONAL)

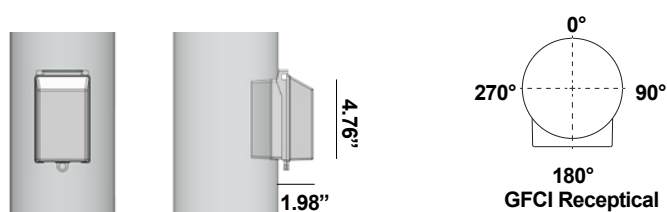


Decorative cast aluminum pole base cover. (OPTIONAL per pole)

Pole Dia.	4.0"Dia	4.5"Dia	5"Dia	6"Dia
Cover (Dia)	Ø 10"	Ø 12"	Ø 12"	Ø 16"
Height (H)	3"	4"	4"	6"
Part No.	RSA40BC (*)	RSA45BC (*)	RSA50BC (*)	RSA60BC (*)

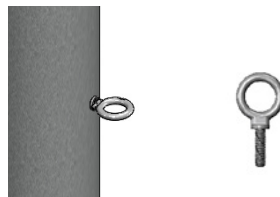
Packaging Contents / Dimensions Cont.

Pole Accessories (OPTIONAL)



Receptical. Single gang 15A GFCI duplex receptical mounted in UL listed water proof enclosure with aluminum casted in-use outlet cover, powder coated to match pole finish. Mounted as standard at +18" to bottom of enclosure at 180° on poled, consult factory for other mounting configurations.

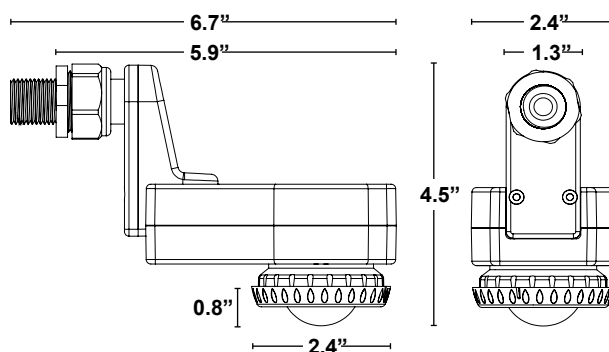
Part No. R



Eye bolt. 3/8" 304 16-thread size stainless steel with 1-1/4" thread.

To be used in conjunction with festoon luminaries. Compatible for 50lbs of load. Consult factory for mounting location.

Part No. B



Integral outdoor 2-in-1 PIR motion sensor and photo cell. 360° motion with dusk to dawn setting. Consult factory for mounting location.

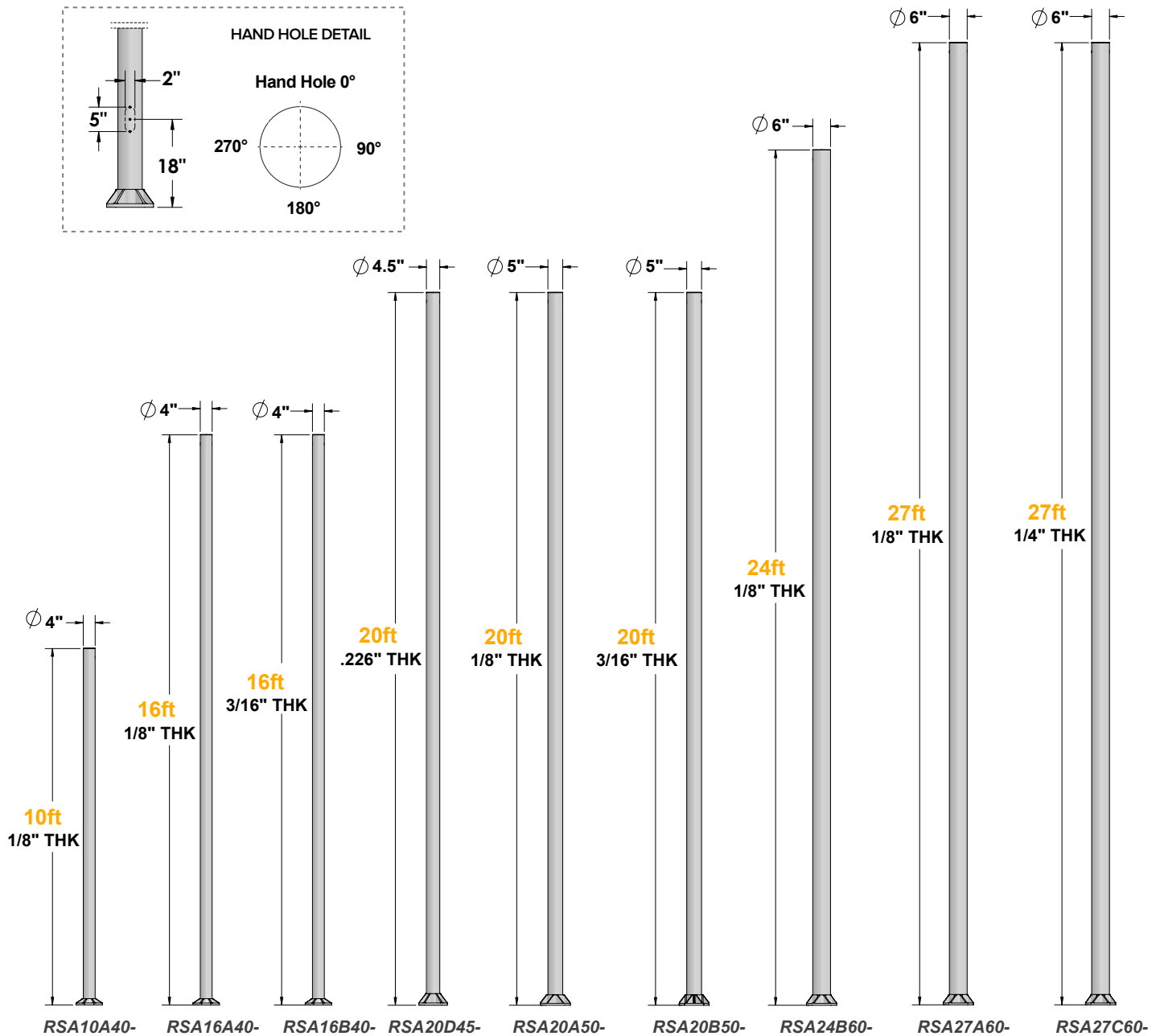
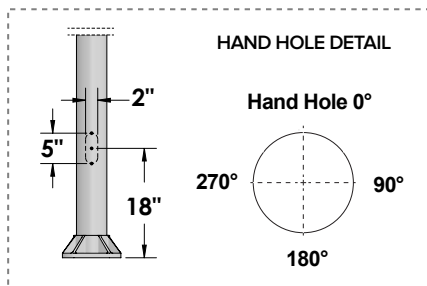
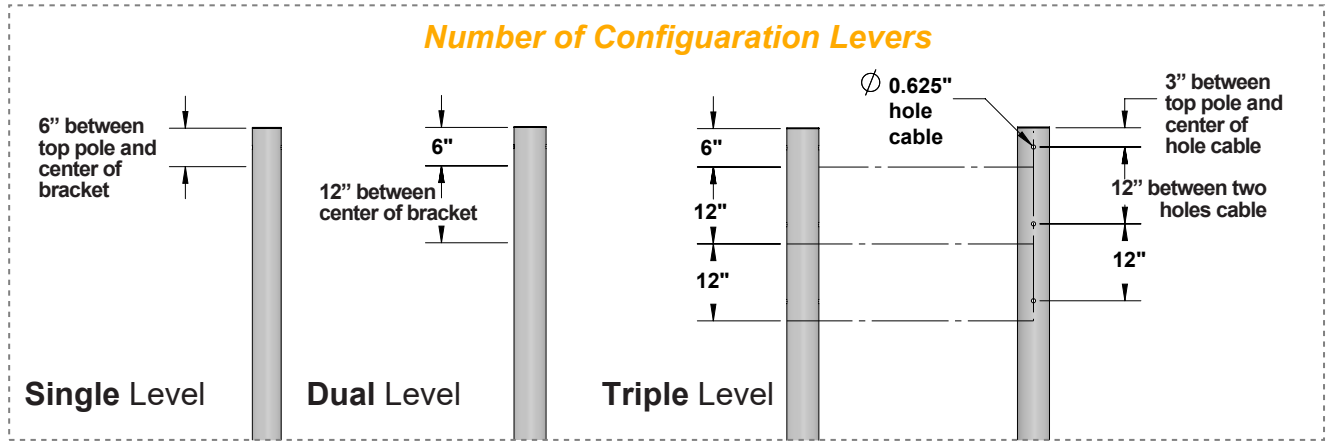
FINISH ● White

Part No. S

Pole Accessories Installation

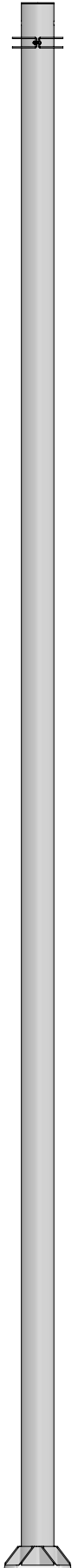
Select height of pole and number of configuration levers

Dependant on fixture compatibility and configurations.

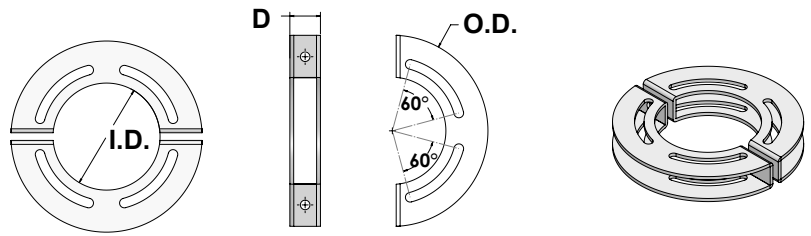


Pole Accessories Installation

With Fixture Mounting Bracket

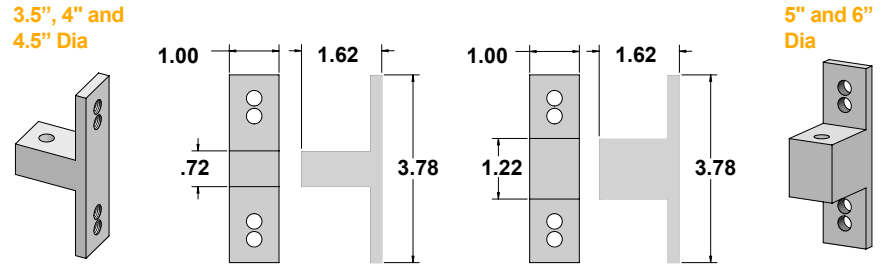


Event pole mounting ring



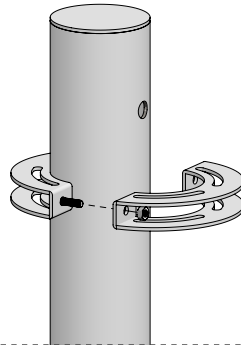
Pole Dia. (I.D.)	4.0"	4.5"	5"	6"
Depth (D)	1.00"	1.00"	1.625"	1.625"
Outside Dia. (O.D.)	6.75"	7.25"	7.75"	8.75"
Part No.	RSA40RB	RSA45RB	RSA50RB	RSA60RB

Event pole fixture mounting bracket ring

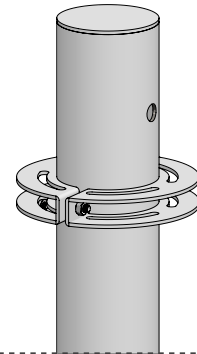


Pole Dia.	4" and 4.5"	5" and 6"
Part No.	1RSABK4045Y (*)	1RSABK5060Y (*)

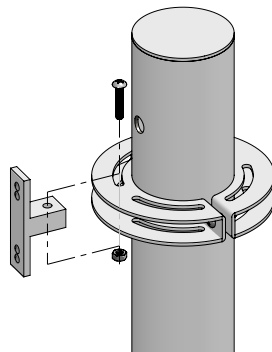
1



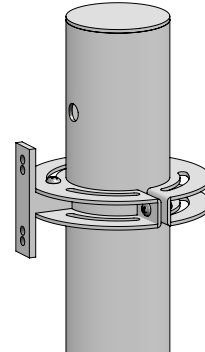
2



3



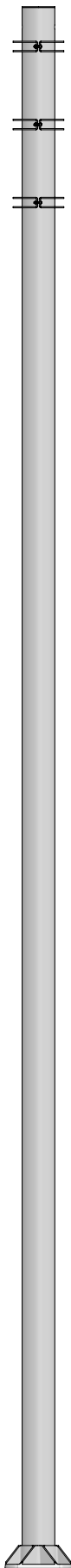
4



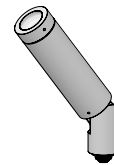
Pole Accessories Installation Cont.

Select Fixture Luminaire

Dependant on fixture compatibility and configurations.

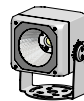


BULLETTO Series

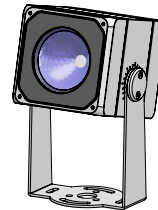


BULLETTO Line

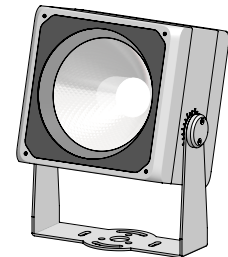
DART Series



DART Small



DART Medium

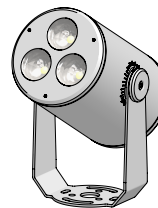


DART Maxi

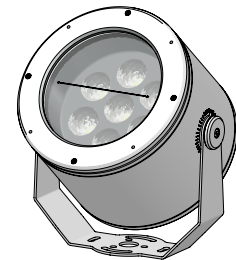
DART ROUND Series



DART ROUND
Small



DART ROUND
Medium



DART ROUND
Maxi

VADER Series



VADER Solo, VADER TW

Durastrand



DURACABLE INTELLISTRAND

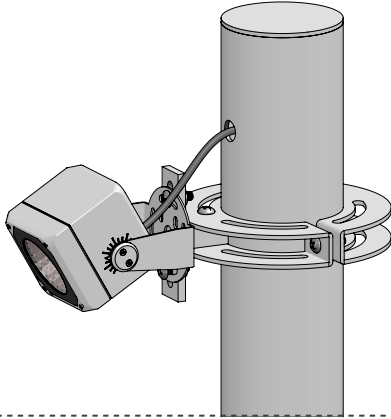
Pole Accessories Installation Cont.

Select number of fixtures on each bracket, relative to each level desired.

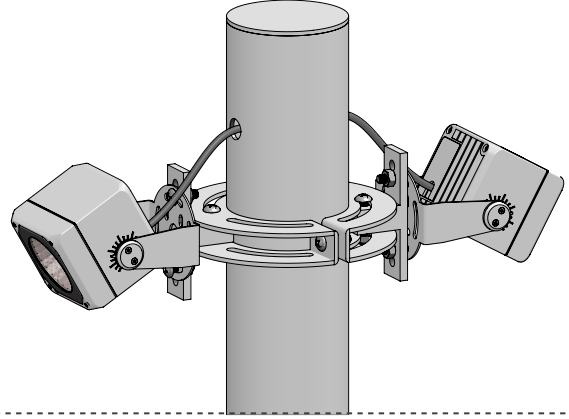
Dependant on fixture compatibility and configurations.

Shown with DART SMALL

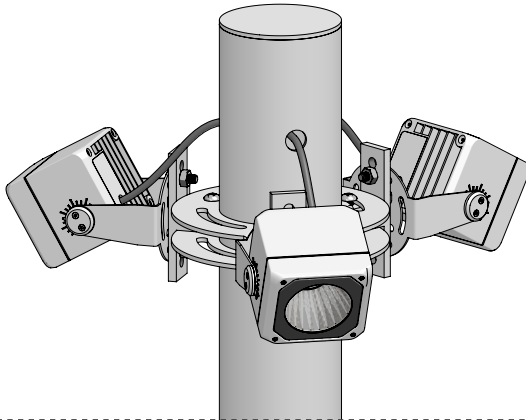
Mounting Bracket, 1 Fixture



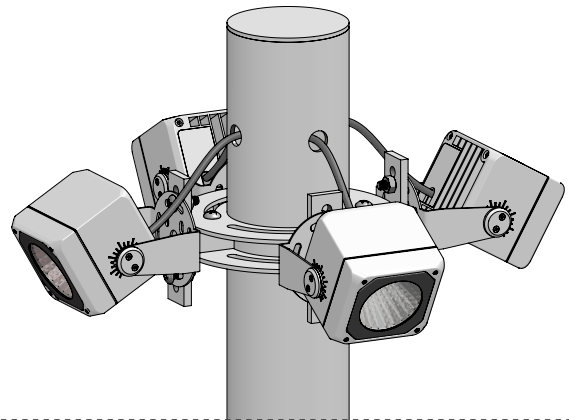
Mounting Bracket, 2 Fixtures



Mounting Bracket, 3 Fixtures



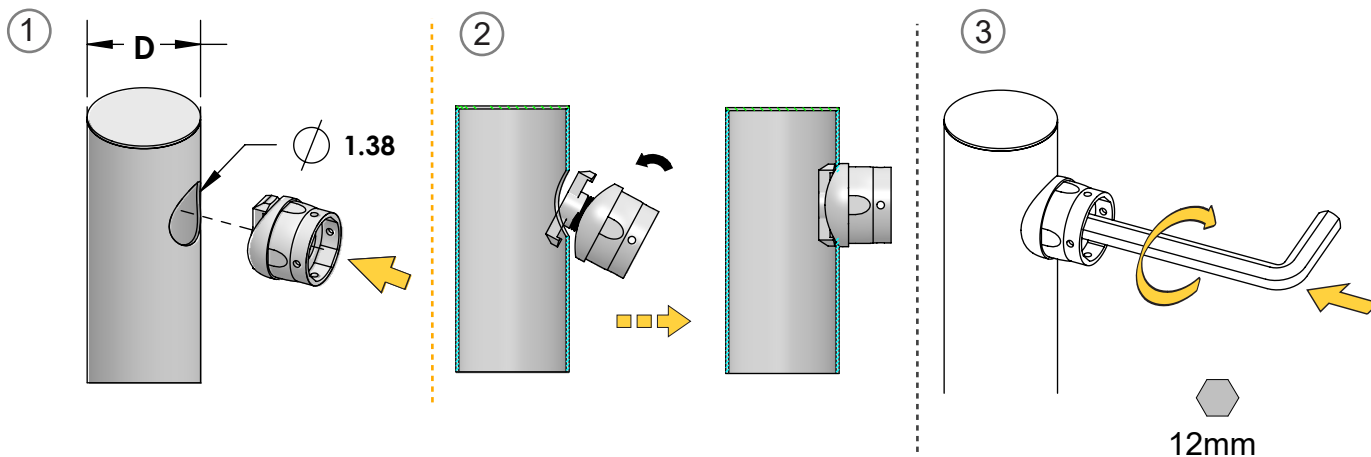
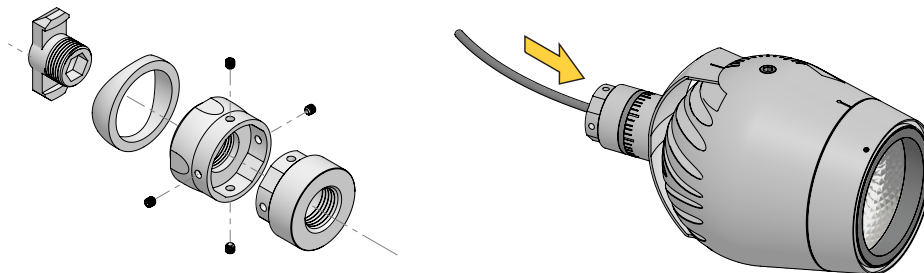
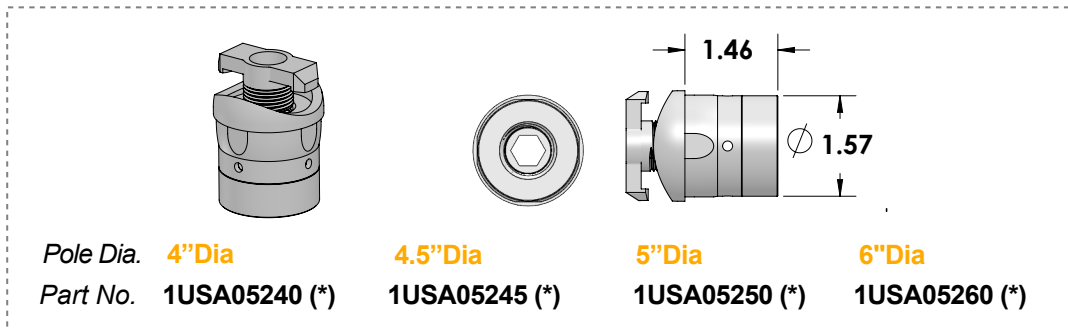
Mounting Bracket, 4 Fixtures



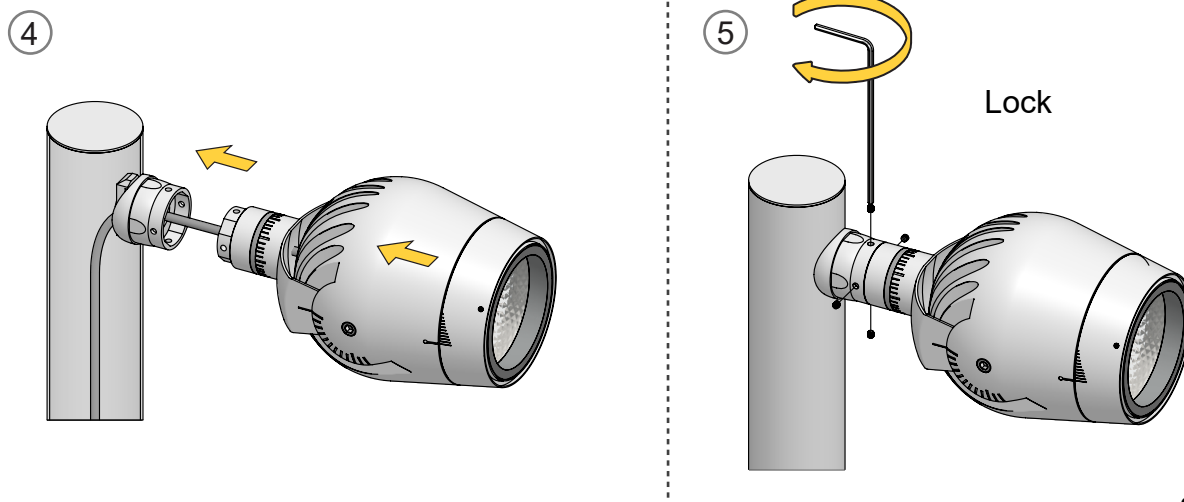
Pole Accessories Installation Cont.

With Single Pole Fixture Bracket (Optional)

Shown with Vader

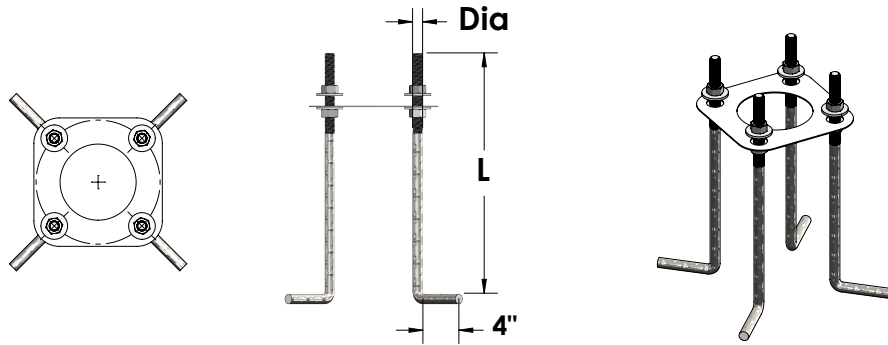


Protect the drilled hole with proper anti-corrosion agent, to restore rust protection



Pole Accessories Installation Cont.

With Pole Anchor Kit



Pole anchor kit, 4ea 'J' anchor bolts per ASTM 1554-55, 8ea hex nuts and washers.

Pole Heights

Length (L)

Diameter (Dia)

Part No.

10ft / 13ft / 16ft

18"

0.75"

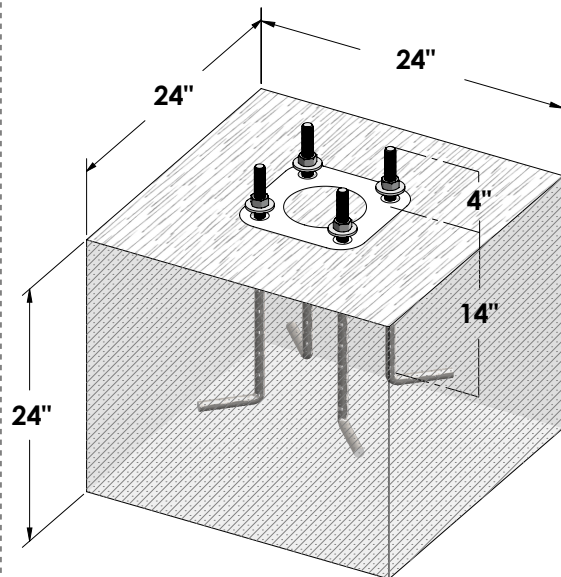
AB4341840

20ft / 24ft

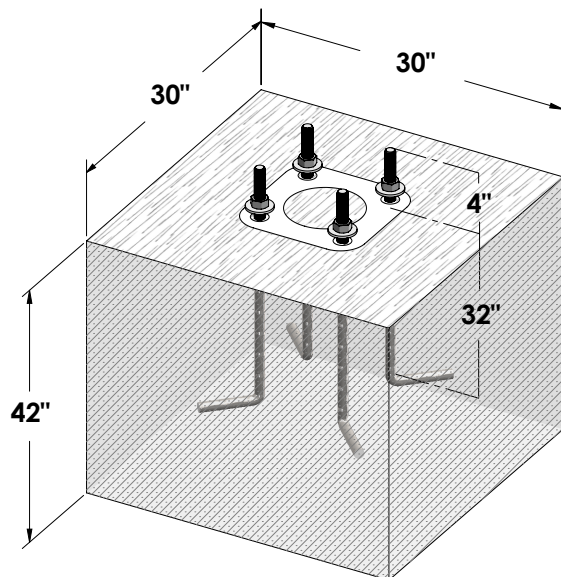
36"

1"

AB4123640

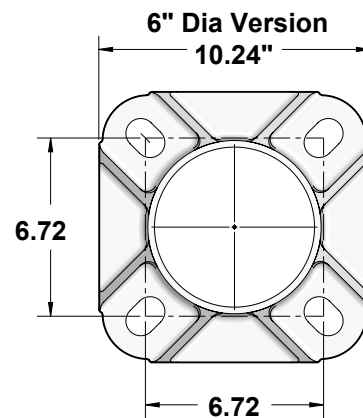
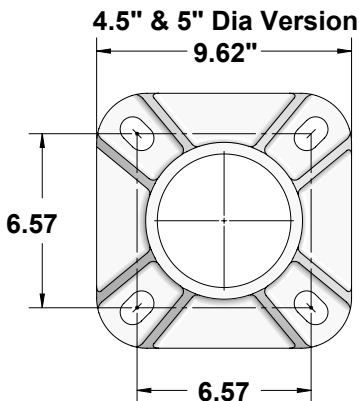
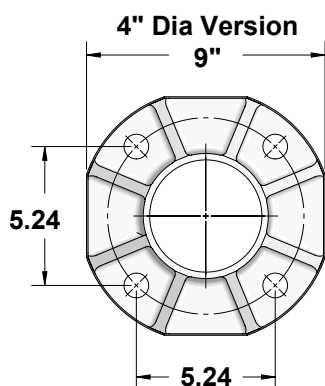


***Dimensions shown are minimum required for concrete plinth applying for AB4341840**



***Dimensions shown are minimum required for concrete plinth applying for AB4123640**

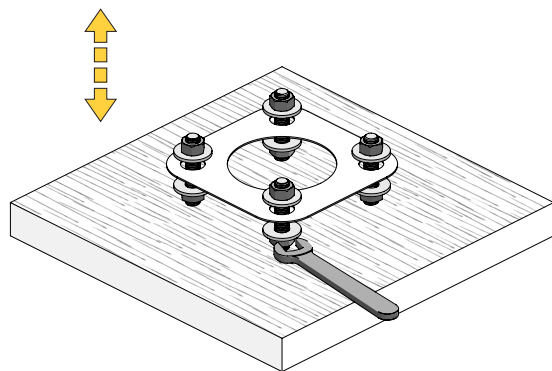
Bolt Pattern Template



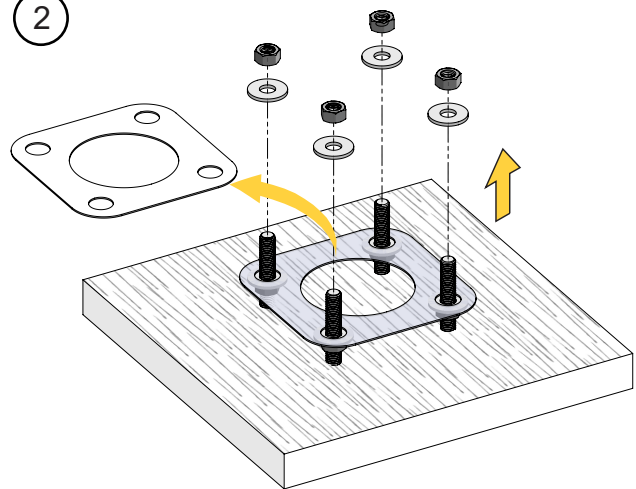
Pole Accessories Installation Cont.

With Pole Anchor Kit

1 Adjustment

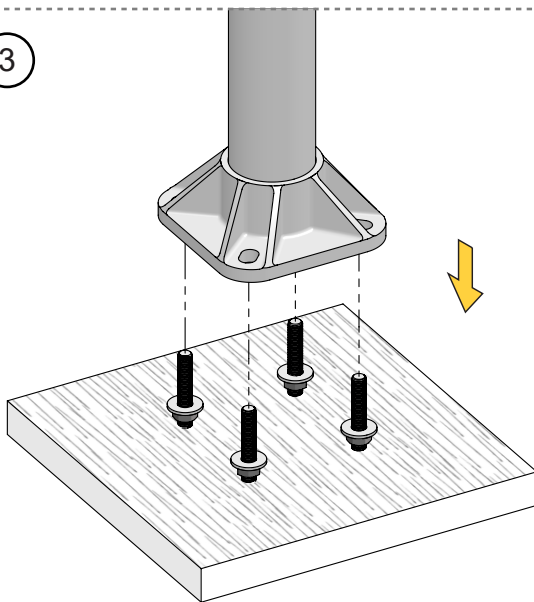


2



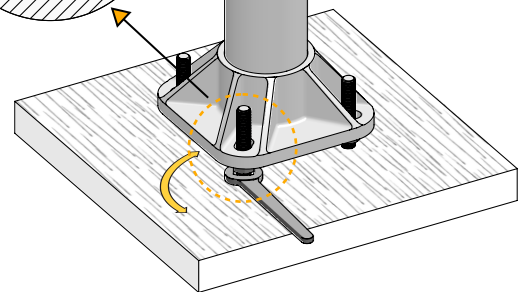
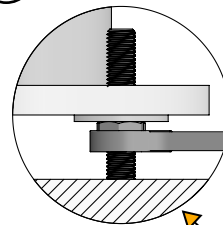
Row to be removed before pole installation

3

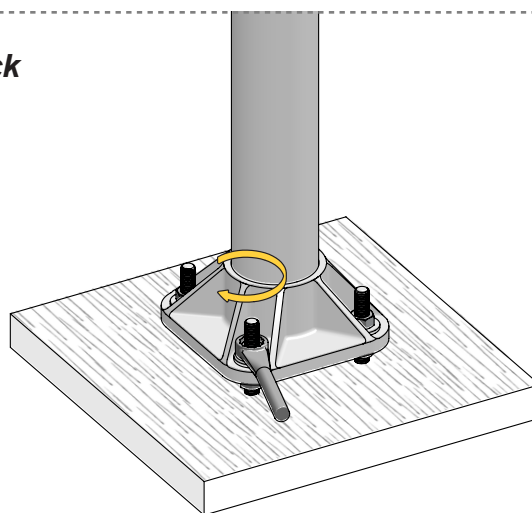


4

Level

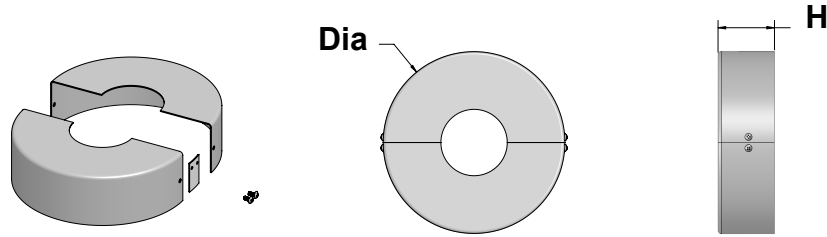


5 Lock

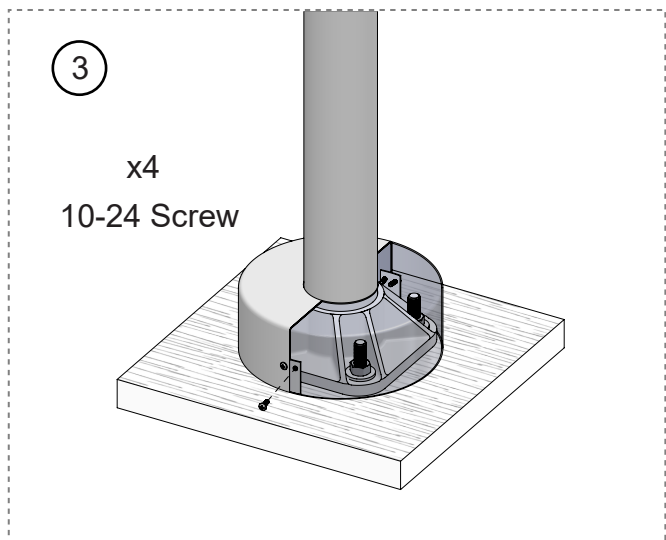
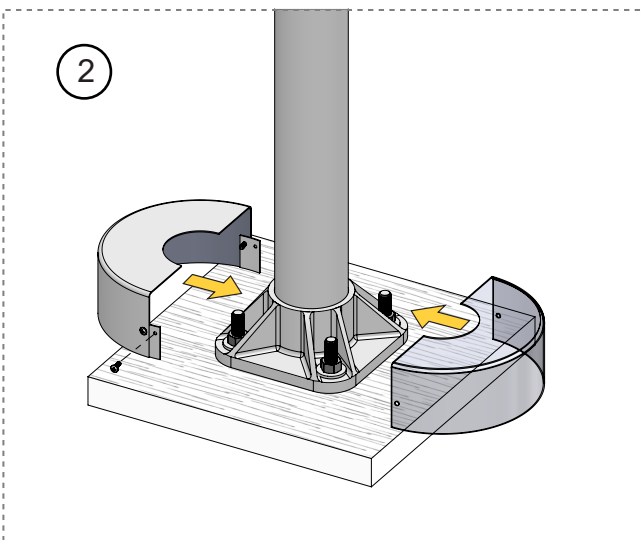
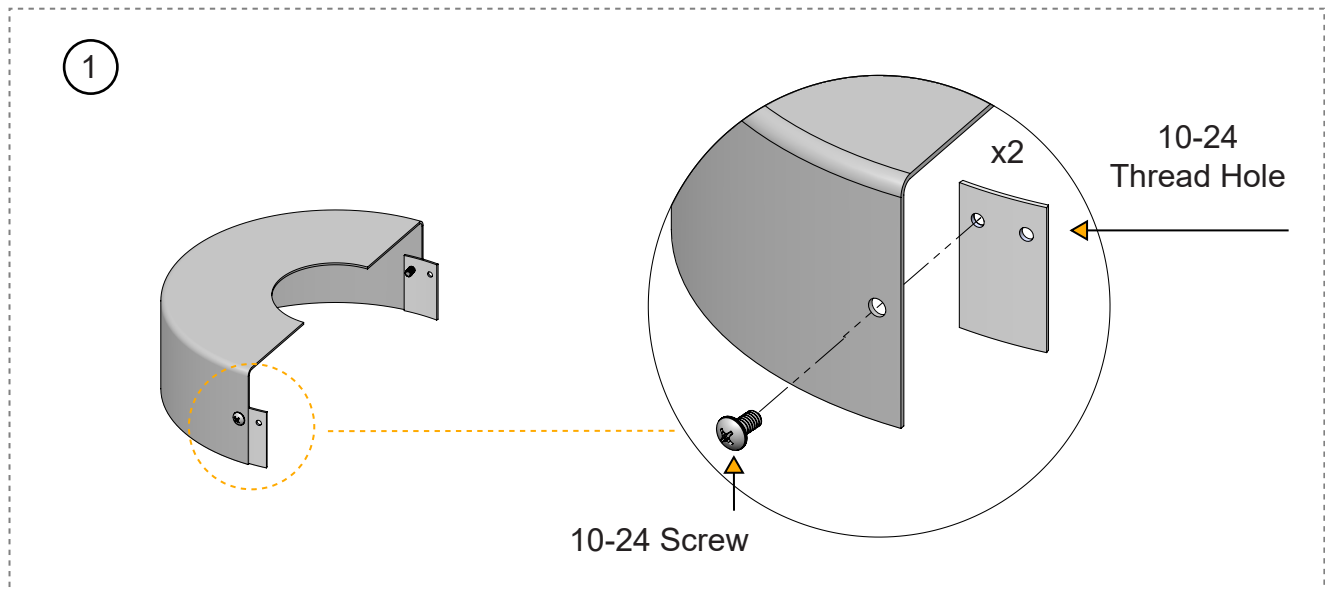


Pole Accessories Installation Cont.

With Decorative Cast Aluminum Pole Base Cover

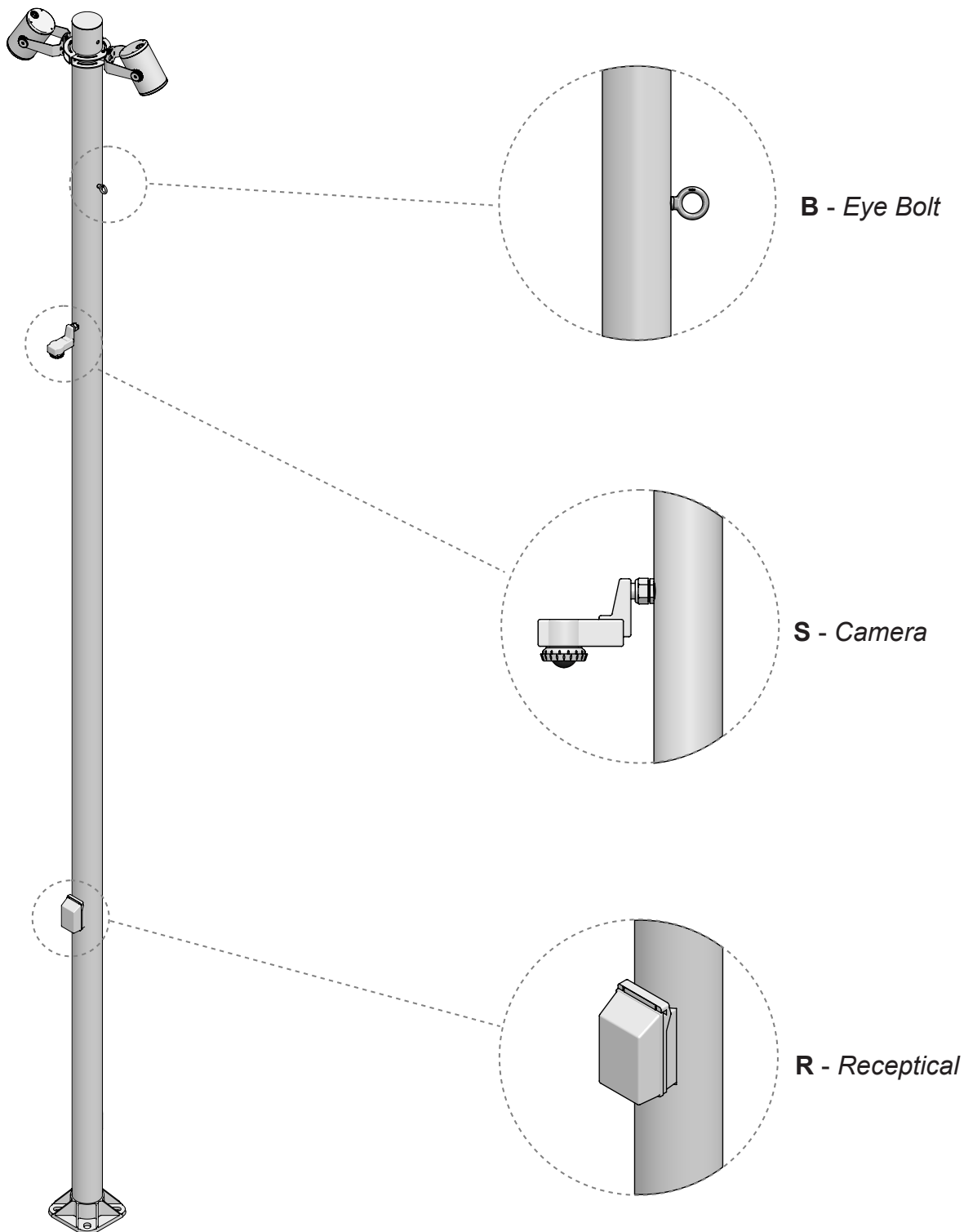


<i>Pole Dia.</i>	4.0"Dia	4.5"Dia	5"Dia	6"Dia
<i>Cover (Dia)</i>	Ø 10"	Ø 12"	Ø 12"	Ø 16"
<i>Height (H)</i>	3"	4"	4"	6"
<i>Part No.</i>	RSA40BC (*)	RSA45BC (*)	RSA50BC (*)	RSA60BC (*)



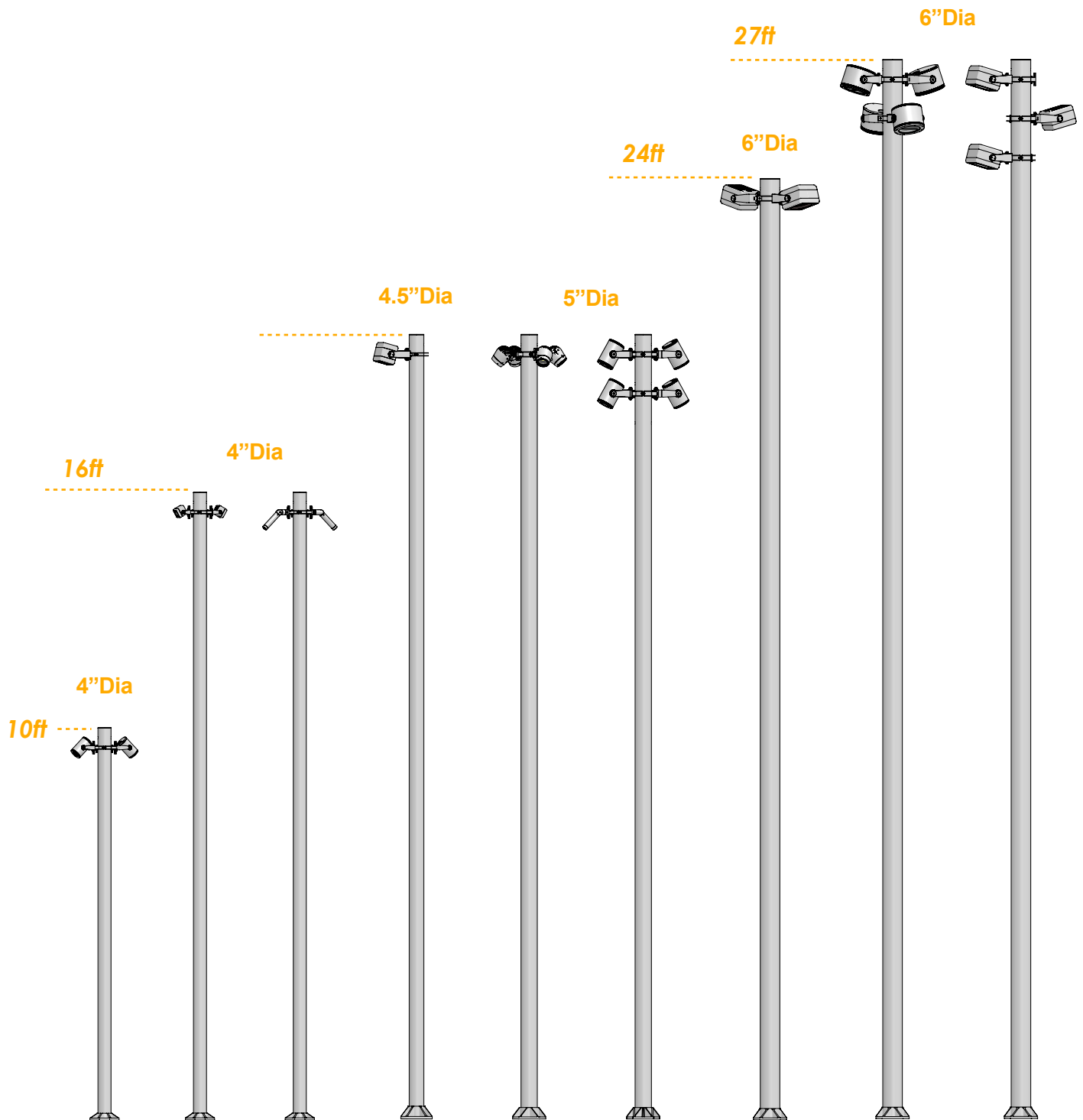
Pole Accessories Installation Cont.

With Eye Bolt, Sensor and Receptical

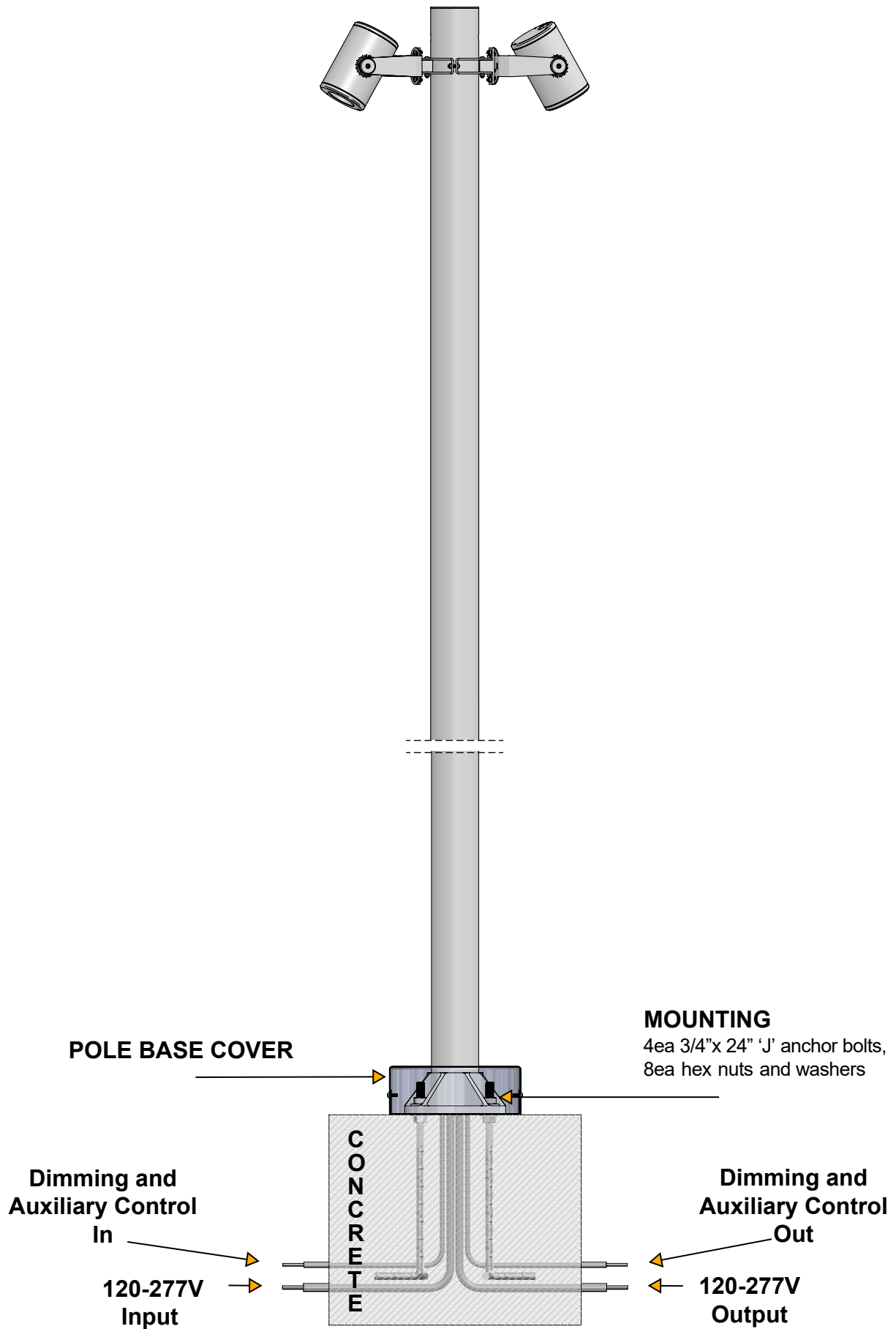


Pole Accessories Installation Cont.

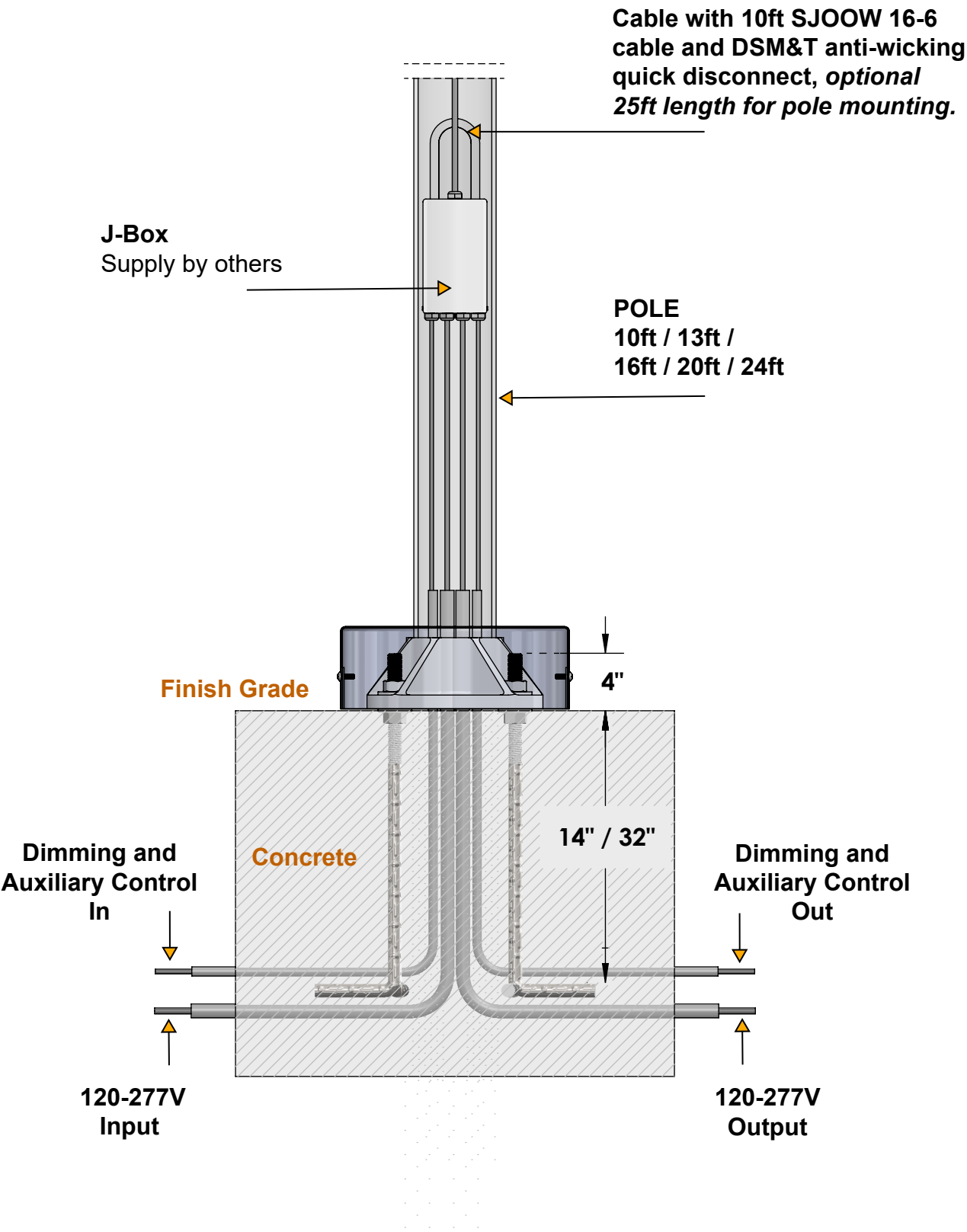
Each of the pole heights offered are compatible with specific fixtures, creating a wide range of possible event pole mounting configurations to meet the project needs.



Pole Diagram



Pole Diagram Detail



Maintenance

This fixture was designed and manufactured for a durable, long lasting use with minimum care. To ensure the maximum lifespan of this product, we encourage our customers to provide a quality visual inspection of the fixture and installation accessories every six months. If there are any visible signs of issues (i.e moisture or dust) during the inspection, please clean any of the dust or moisture with a soft cloth and check to make sure that all fixtures are still operating normally. If there are any issues regarding the fixture please contact us as we will assist the situation at hand.

Support

Any questions, problems, or comments you have please feel free to contact our Customer Service department during our business hours Monday-Friday 8am-5pm via: Email: usaorders@targetti.com

Phone:
(714) 513-1991

Visit our website: <http://www.targettiusa.com>