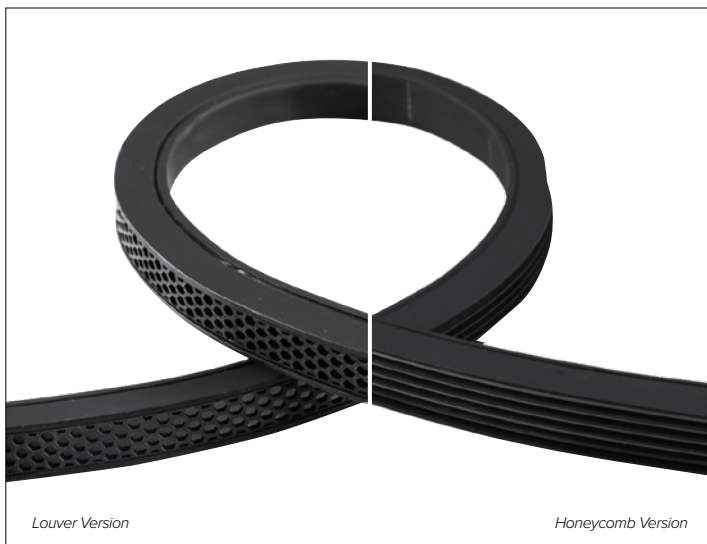


# DURAFLEX NOTTE DISCRETE – LUMA TOP

## Dynamic Flexible Light Strip Designed to Disappear



0.63"

0.63"

0.63"

No cut limitation, cut at any length.  
Caution! Field cutting should only be done before power is connected.

**Bend and Twist**

Minimum Bend Radius  
Radius 4", Diameter 8"

Maximum Twist  
360° every 40"



### CONCEPT

**Black as Night**, the NOTTE flexible 'neon' linear series is designed to disappear into the architecture, featuring a black silicone body and off-state black lens that becomes virtually invisible when unlit seamlessly integrating into dark environments.

### MECHANICAL CHARACTERISTICS

<b>Materials</b>	Extruded black silicone with LED strip and off-state black lens.
<b>Functionality</b>	With flexibility and customizable lengths, the NOTTE Series is ideal for architectural applications requiring an incognito, discreet off-state appearance.
<b>Installation</b>	Manufacturer pre-assembled to specific project lengths with factory attached end prep assemblies. To be completed with clip or channel mountings.
<b>Protection</b>	IP67 (For use in outdoor or indoor applications).

### CERTIFICATIONS

cULus Class 2 Listed  
Tested in accordance with LM-79-08  
Energy efficient for California installations.  
RoHS compliant

### WARRANTY

5 year limited warranty

### ELECTRICAL CHARACTERISTICS

<b>Power Connection</b>	Factory attached end prep, see available options. Remote Class 2 120V-277V AC power supply required, see available options.
<b>Wattage</b>	4.3W/ft
<b>Voltage</b>	24V DC
<b>Trigger Time</b>	< 0.2s
<b>Number of cycles</b>	100,000
<b>Operating Temp.</b>	-25°C / +35°C
<b>Max Continuous Length</b>	16ft Factory manufactured individual run lengths. Field trimmable at any length

### SOURCE

TM30	CCT (Nominal)		CRI
	2700K	3000K	
	2700K	3000K	80
	3000K	3500K	80
	3500K	4000K	80
	4000K		80

Strip & LED Details	Model	Delivered Lumens*			Viewing Angle
		2700K	3000K	3500K	
Louver		73Lm/ft	76Lm/ft	76Lm/ft	111° x 40°
Honeycomb		40Lm/ft	46Lm/ft	46Lm/ft	54°

<b>Efficacy</b>	18Lm/W max. Refer to photometric graphs for specific values.
<b>Lifetime</b>	L70/B50 ≥50,000hrs at max TA +25°C

# DURAFLEX NOTTE DISCRETE – LUMA TOP

## SPECIFICATION INFORMATION

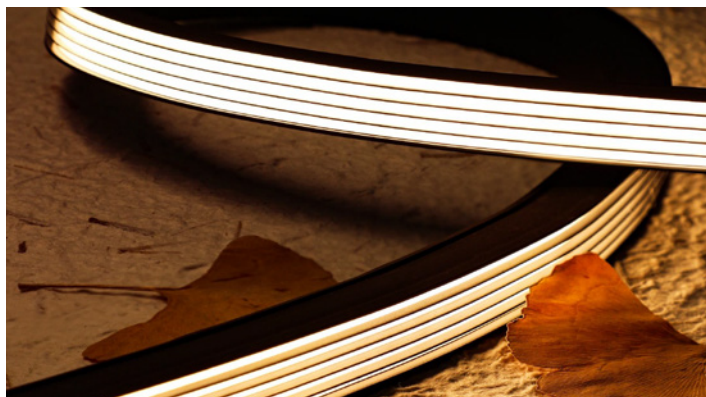
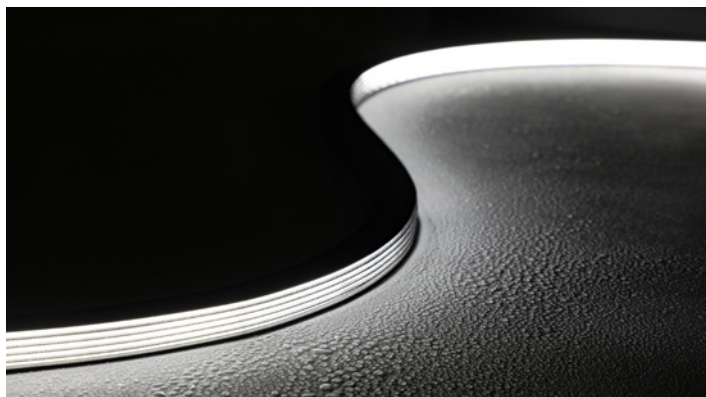
DFB									
1	2	3	4	5	6	7	8	9	10
							<b>REQUIRED</b>		

Ex: DFBLVTB4303024/ KT21UML1/ KT21UMC1/ DMLE301242UD

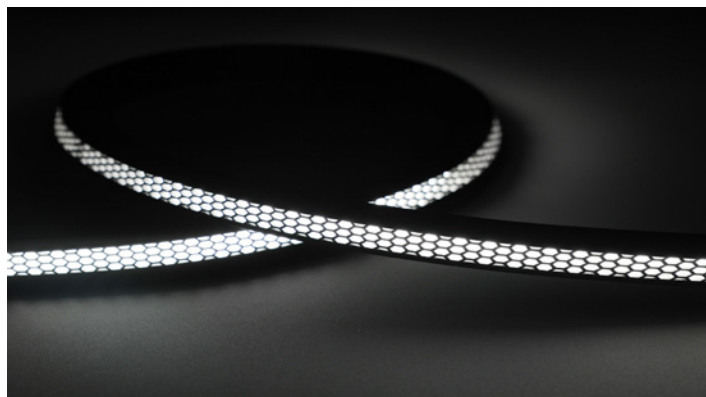
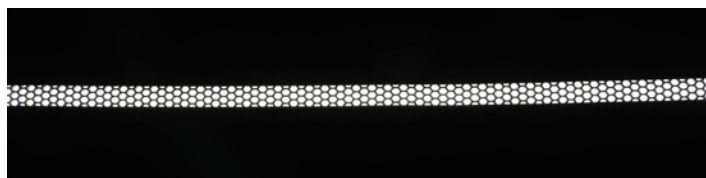
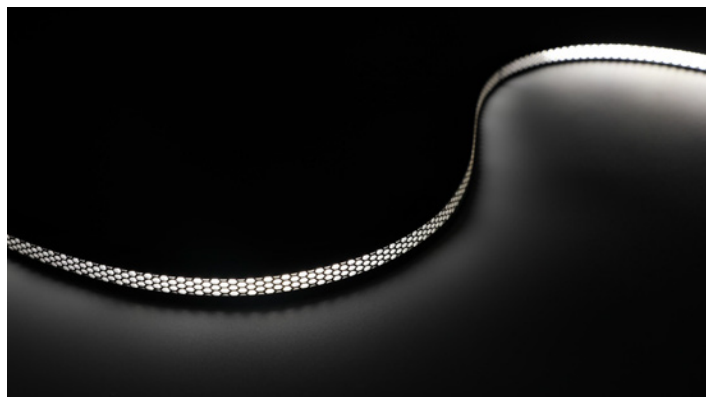
1 - PRODUCT CODE	2 - STYLE	3 - BEND	4 - WATTAGE	5 - RATING	6 - KELVIN	7 - VOLTAGE
DFB – DURAFLEX NOTTE	LV – LOUVER HC – HONEYCOMB	TB – LUMA TOP VERTICAL	43 – 4.3W/ft	O – IP67	27 – 2700K 30 – 3000K 35 – 3500K 40 – 4000K	24 – 24V DC
8 - END PREP CONNECTION	9 - MOUNTING	10 - POWER SUPPLY				
<b>REQUIRED</b> <a href="#">See section for details</a>	<b>REQUIRED</b> <a href="#">See section for details</a>	<b>REQUIRED</b> <a href="#">See section for details</a>				

## STYLES

DISCRETE LOUVER



DISCRETE HONEYCOMB



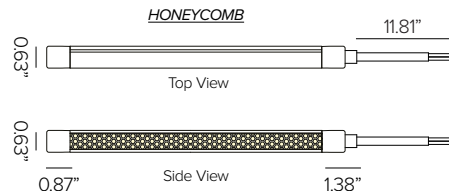
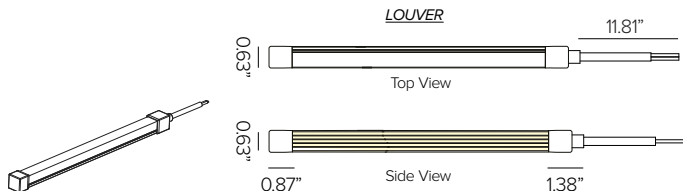
# DURAFLEX NOTTE DISCRETE – LUMA TOP

## 8 - END PREP CONNECTION (REQUIRED)



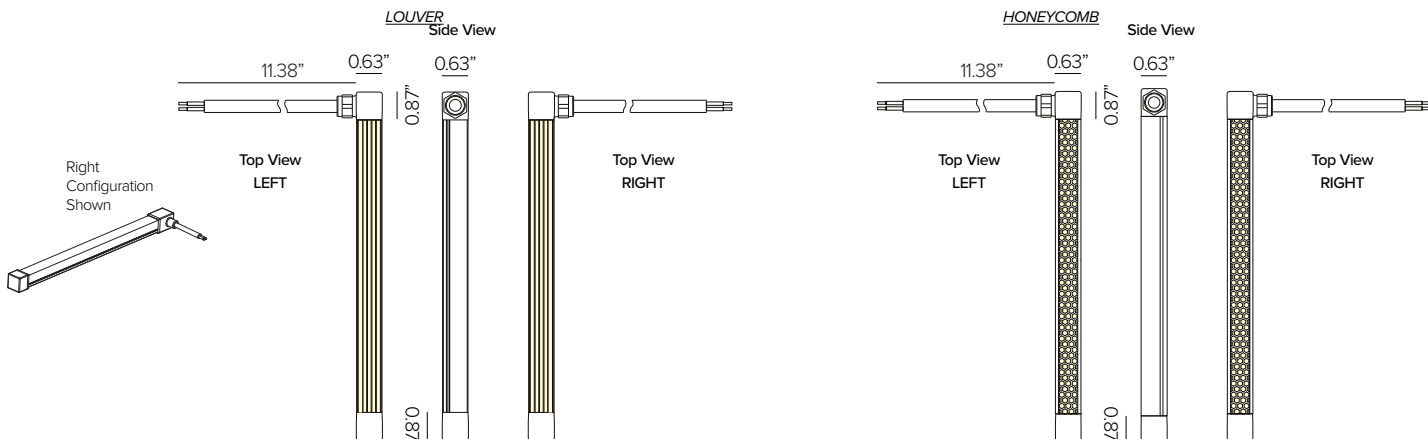
### BLACK TRANSLUCENT SILICONE:

Purchase by length only, factory assembled. Field cuttable. Caution! Field cutting should only be done before power is connected.



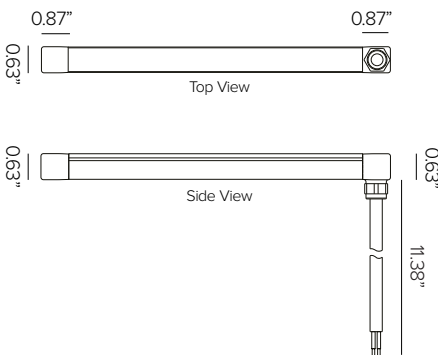
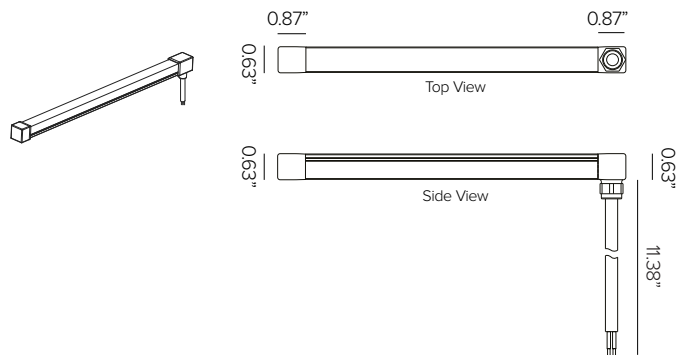
DURAFLEX NOTTE DISCRETE black translucent silicone straight end prep connection, factory pre-assembled. Lead wire/dead end allows for connection to power at lead end and field trim of DURAFLEX product at the other end. Completed with translucent silicone factory attached end cap.

Part No. **KT21UML1**



DURAFLEX NOTTE DISCRETE black translucent silicone side (left/right) end prep connection, factory pre-assembled. Lead wire/dead end allows for connection to power at lead end and field trim of DURAFLEX product at the other end. Completed with translucent silicone factory attached end cap.

Side	Left	Right
Part No.	<b>KT21UML2L</b>	<b>KT21UML2R</b>

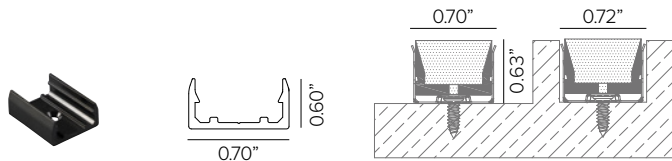


DURAFLEX NOTTE DISCRETE black translucent silicone bottom end prep connection, factory pre-assembled. Lead wire/dead end allows for connection to power at lead end and field trim of DURAFLEX product at the other end. Completed with translucent silicone factory attached end cap.

Part No. **KT21UML3**

# DURAFLEX NOTTE DISCRETE – LUMA TOP

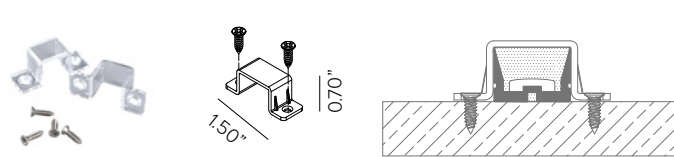
## 9 - MOUNTING (REQUIRED)



DURAFLEX NOTTE RGBW bottom fixing clips, stainless steel. Includes 5 clips and 5 screws.

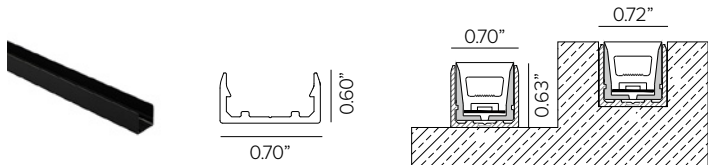
Finish ● Black

Part No. **KT21UMC1**



DURAFLEX NOTTE RGBW transparent clips kit. Includes 5 clips and 10 screws.

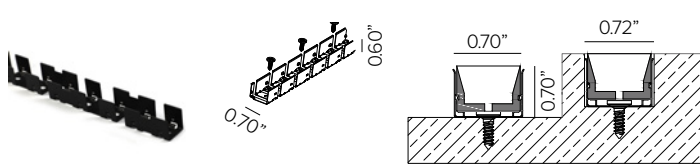
Part No. **KT21UMS1**



DURAFLEX NOTTE RGBW aluminum rigid profile with 2ea screws. Dimension: 39" (1M) Length. **Note, translucent cap style and bottom termination end prep configurations rest outside of the profile.**

Finish ● Black

Part No. **KT21UMP1**



DURAFLEX NOTTE RGBW flexible stamped stainless steel profile secured with screws, 1ea provided per foot. Available in 1ft lengths. **Note, translucent cap style and bottom termination end prep configurations rest outside of the profile.**

Finish ● Black

Part No. **KT21UMFP2**

# DURAFLEX NOTTE DISCRETE – LUMA TOP

## 10 - POWER SUPPLY (REQUIRED)

ENCLOSURE								
Part No.	Wattage	Control	Dim Range	Rating	In / Out Voltage	Certification	Dimensions (Enclosure)	Description
<b>DMLE301242UD</b>	30W	MLV / ELV / 0-10V / TRIAC	0-10V 0% MLV <10% ELV <10%	NEMA3R	120-277V / 24V	UL Class 2	4.47" X 6.79" X 1.38"	EMCOD electronic driver with wiring compartment.
<b>DMLE601242UD</b>	60W	MLV / ELV / 0-10V / TRIAC	0-10V 0% MLV <10% ELV <10%	NEMA3R	120-277V / 24V	UL Class 2	4.47" X 6.79" X 1.38"	EMCOD electronic driver with wiring compartment.
<b>DELI601241CPWM</b>	60W	0-10V	1%	NEMA1	120-277V / 24V	UL Class 2	10" x 10" x 4"	MEANWELL electronic PWM driver.
<b>DELX601241CPWM</b>	60W	0-10V	1%	NEMA3R	120-277V / 24V	UL Class 2	10" x 10" x 4"	MEANWELL electronic PWM driver.
<b>DELI901241CPWM</b>	90W	0-10V	1%	NEMA1	120-277V / 24V	UL Class 2	10" x 10" x 4"	MEANWELL electronic PWM driver.
<b>DELX901241CPWM</b>	90W	0-10V	1%	NEMA3R	120-277V / 24V	UL Class 2	10" x 10" x 4"	MEANWELL electronic PWM driver.
<b>DMLE961242UD</b>	96W	MLV / ELV / 0-10V / TRIAC	0-10V 0% MLV <10% ELV <10%	NEMA3R	120-277V / 24V	UL Class 2	5.16" X 7.73" X 1.54	EMCOD electronic driver with wiring compartment.
<b>DELV96124D</b>	96W	0-10V	0.1%	IP65	120-277V / 24V	UL Class 2	12.1" X 2.4" X 1.4"	Magnitude SOLIDrive electronic driver with built in junction box.
<b>DELI1802242CPWM</b>	2X90W	0-10V	1%	NEMA1	120-277V / 24V	UL Class 2	12" x 12" x 4"	MEANWELL electronic PWM driver.
<b>DELX1802242CPWM</b>	2X90W	0-10V	1%	NEMA3R	120-277V / 24V	UL Class 2	12" x 12" x 4"	MEANWELL electronic PWM driver.
<b>DMLE1922242UD</b>	2X96W	MLV / ELV / 0-10V / TRIAC	0-10V 0% MLV <10% ELV <10%	NEMA3R	120-277V / 24V	UL Class 2	5.04" X 10.94" X 1.81	EMCOD electronic driver with wiring compartment.
<b>DELI2703243CPWM</b>	3X90W	0-10V	1%	NEMA1	120-277V / 24V	UL Class 2	12" x 12" x 4"	MEANWELL electronic PWM driver.
<b>DELX2703243CPWM</b>	3X90W	0-10V	1%	NEMA1	120-277V / 24V	UL Class 2	12" x 12" x 4"	MEANWELL electronic PWM driver.
<b>DMLE2882242UD</b>	3X96W	MLV / ELV / 0-10V / TRIAC	0-10V 0% MLV <10% ELV <10%	NEMA3R	120-277V / 24V	UL Class 2	5.04" X 10.94" X 1.81	EMCOD electronic driver with wiring compartment.

STAND ALONE								
Part No.	Wattage	Control	Dim Range	Rating	In / Out Voltage	Certification	Dimensions (Standalone)	Description
<b>DEL60PWM</b>	60W	0-10V	1%	IP67	120-277V / 24V	UL Class 2	5.9" X 2.09" X 1.38"	MEANWELL electronic PWM driver. <b>UL listed enclosure provided by others.</b>
<b>DEL90PWM</b>	90W	0-10V	1%	IP67	120-277V / 24V	UL Class 2	6.73" X 2.48" X 1.48"	MEANWELL electronic PWM driver. <b>UL listed enclosure provided by others.</b>

MAX INTERCONNECTED FLEX LENGTHS PER DRIVER								
Fixture Wattage	Driver Wattage							
	30W	60W	90W	96W	2X90W	2X96W	3X90W	3X96W
4.3W	5FT	11FT	17FT	18FT	(2) 17FT	(2) 25FT	(3) 24FT	(3) 35FT

# DURAFLEX NOTTE DISCRETE – LUMA TOP

## PHOTOMETRY

IES FILES SHOWN AT 1M (3.28FT) LENGTHS

### LOUVER

	2700K	H(m)	D1(m)	D2(m)	Emax(lx)		
	Ra90		111°	40°			
	Fixture Power	14W	1	2.90	0.73	147	
	Source Flux	240lm	2	5.80	1.46	37	
	Fixture Flux	240lm	3	8.69	2.18	16	
	Efficacy	17lm/W	4	11.59	2.91	9	
355043	I <sub>max</sub> =614cd/klm	I <sub>max</sub>	147cd	5	14.49	3.64	6

	3000K	H(m)	D1(m)	D2(m)	Emax(lx)		
	Ra90		111°	40°			
	Fixture Power	14W	1	2.90	0.73	154	
	Source Flux	250lm	2	5.80	1.46	38	
	Fixture Flux	250lm	3	8.69	2.18	17	
	Efficacy	18lm/W	4	11.59	2.91	10	
355067	I <sub>max</sub> =614cd/klm	I <sub>max</sub>	154cd	5	14.49	3.64	6

	3500K	H(m)	D1(m)	D2(m)	Emax(lx)		
	Ra90		111°	40°			
	Fixture Power	14W	1	2.90	0.73	154	
	Source Flux	250lm	2	5.80	1.46	38	
	Fixture Flux	250lm	3	8.69	2.18	17	
	Efficacy	18lm/W	4	11.59	2.91	10	
355050	I <sub>max</sub> =614cd/klm	I <sub>max</sub>	154cd	5	14.49	3.64	6

### HONEYCOMB

	2700K	H(m)	D(m)	Emax(lx)		
	Ra90		54°			
	Fixture Power	14W	1	1.01	159	
	Source Flux	130lm	2	2.03	40	
	Fixture Flux	130lm	3	3.04	18	
	Efficacy	9lm/W	4	4.05	10	
355524	I <sub>max</sub> =1222cd/klm	I <sub>max</sub>	159cd	5	5.07	6

	3000K	H(m)	D(m)	Emax(lx)		
	Ra90		54°			
	Fixture Power	14W	1	1.01	183	
	Source Flux	150lm	2	2.03	46	
	Fixture Flux	150lm	3	3.04	20	
	Efficacy	11lm/W	4	4.05	11	
355548	I <sub>max</sub> =1222cd/klm	I <sub>max</sub>	183cd	5	5.07	7

	3500K	H(m)	D(m)	Emax(lx)		
	Ra90		54°			
	Fixture Power	14W	1	1.01	183	
	Source Flux	150lm	2	2.03	46	
	Fixture Flux	150lm	3	3.04	20	
	Efficacy	11lm/W	4	4.05	11	
355531	I <sub>max</sub> =1222cd/klm	I <sub>max</sub>	183cd	5	5.07	7